

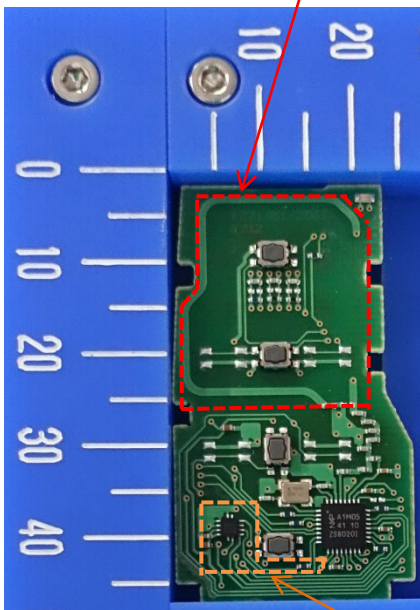
DENSO CORPORATION

Electronic Key

Model: 14FTH

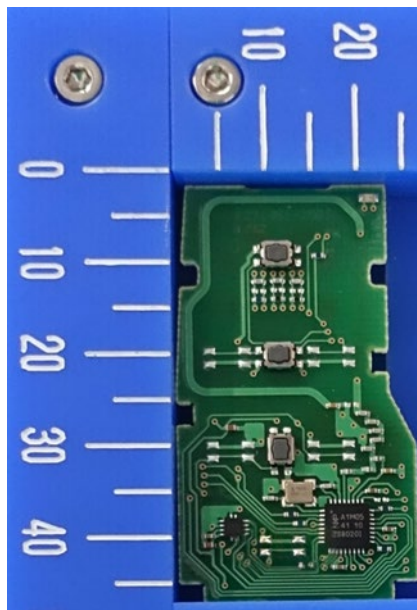
Internal Photos (Type A: IC2, R6, C5 and C6 are mounted.)

Component side **Antenna (Tx)**



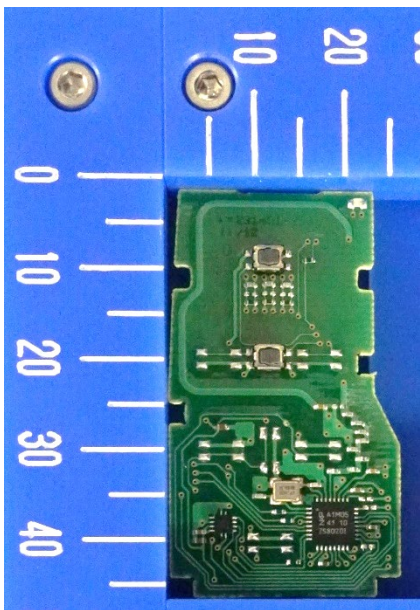
4-Button type

IC2, R6, C5, C6

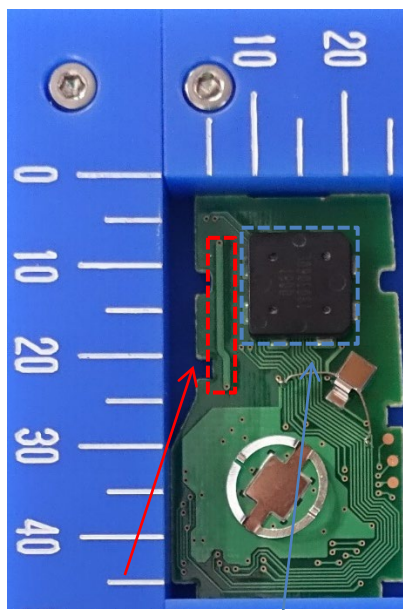


3-Button type

Solder side (Common)



2-Button type



Antenna (Tx)

Antenna (Rx)

Marking location

< On the module cover >



< Inside the outer case >



Note:

The difference in the number and / or location of switches has no influence on RF performance.

Type A and Type B are equivalent in terms of RF performance.

Marking location is inside the outer case or on the module cover.

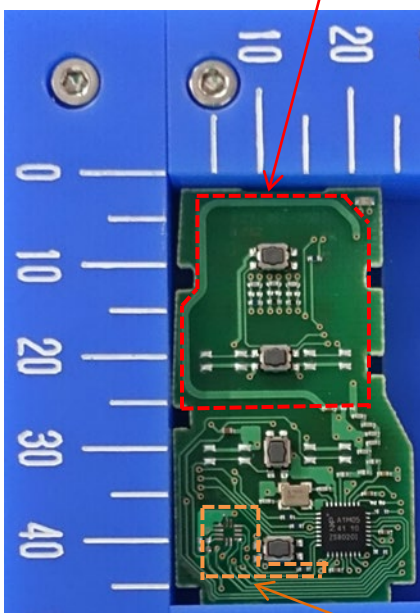
DENSO CORPORATION

Electronic Key

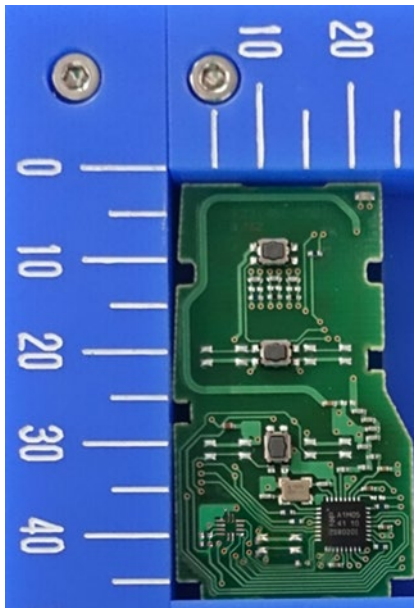
Model: 14FTH

Internal Photos (Type B: IC2, R6, C5 and C6 are not mounted.)

Component side **Antenna (Tx)**

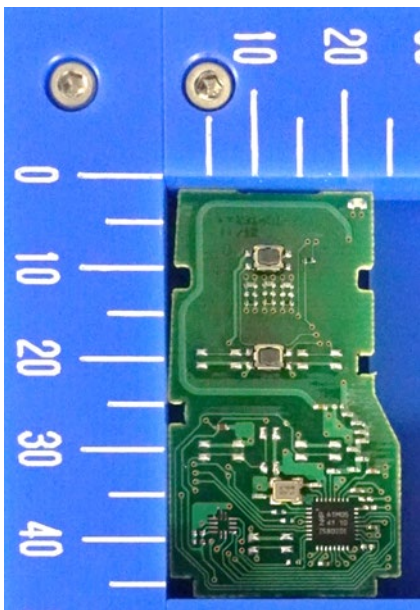


4-Button type **Not mounted**

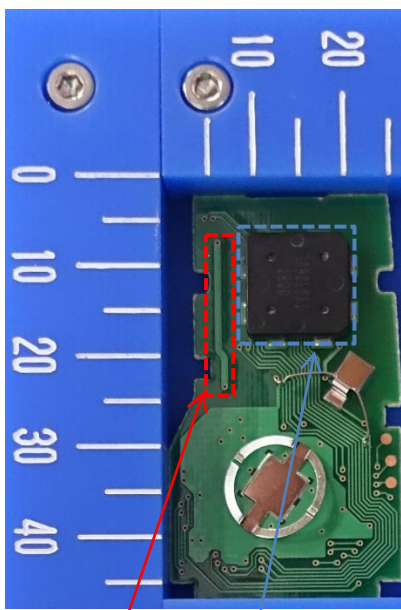


3-Button type

Solder side (Common)



2-Button type



Antenna (Tx)
Antenna (Rx)

Marking location

< On the module cover >



< Inside the outer case >



Note:

The difference in the number and / or location of switches has no influence on RF performance.

Type A and Type B are equivalent in terms of RF performance.

Marking location is inside the outer case or on the module cover.