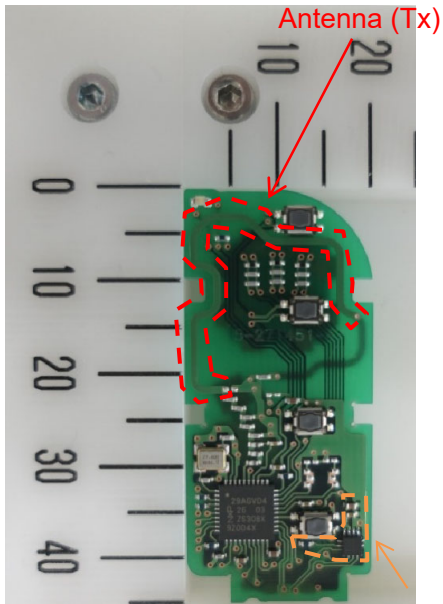


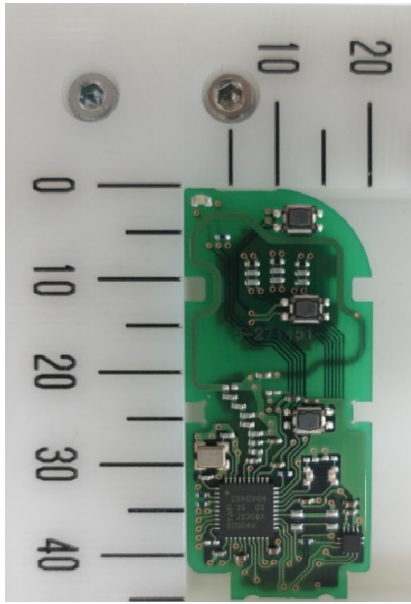
DENSO CORPORATION
Electronic Key
Model: 14FNA

Internal Photos (Type A: IC2, R7, C8 and C9 are mounted.)

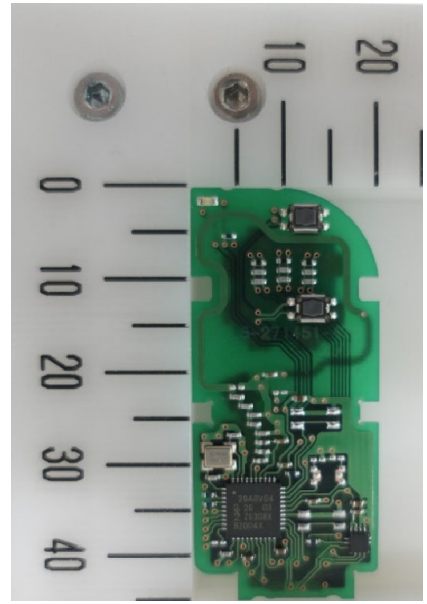
Component side



4-Button type

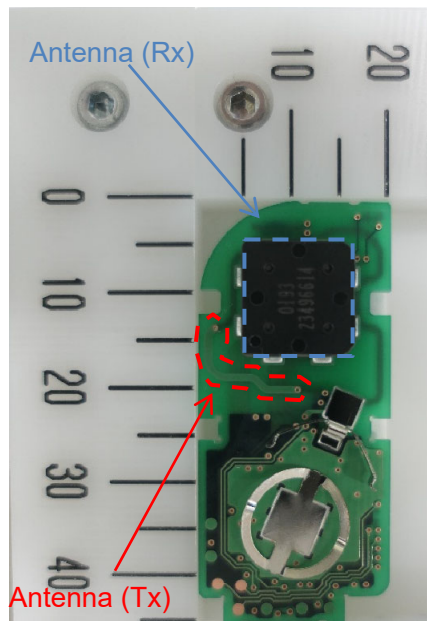


3-Button type



2-Button type

Solder side (Common)



Marking location



Note:

The difference in the number and / or location of switches has no influence on RF performance.

Type A and Type B are equivalent in terms of RF performance.

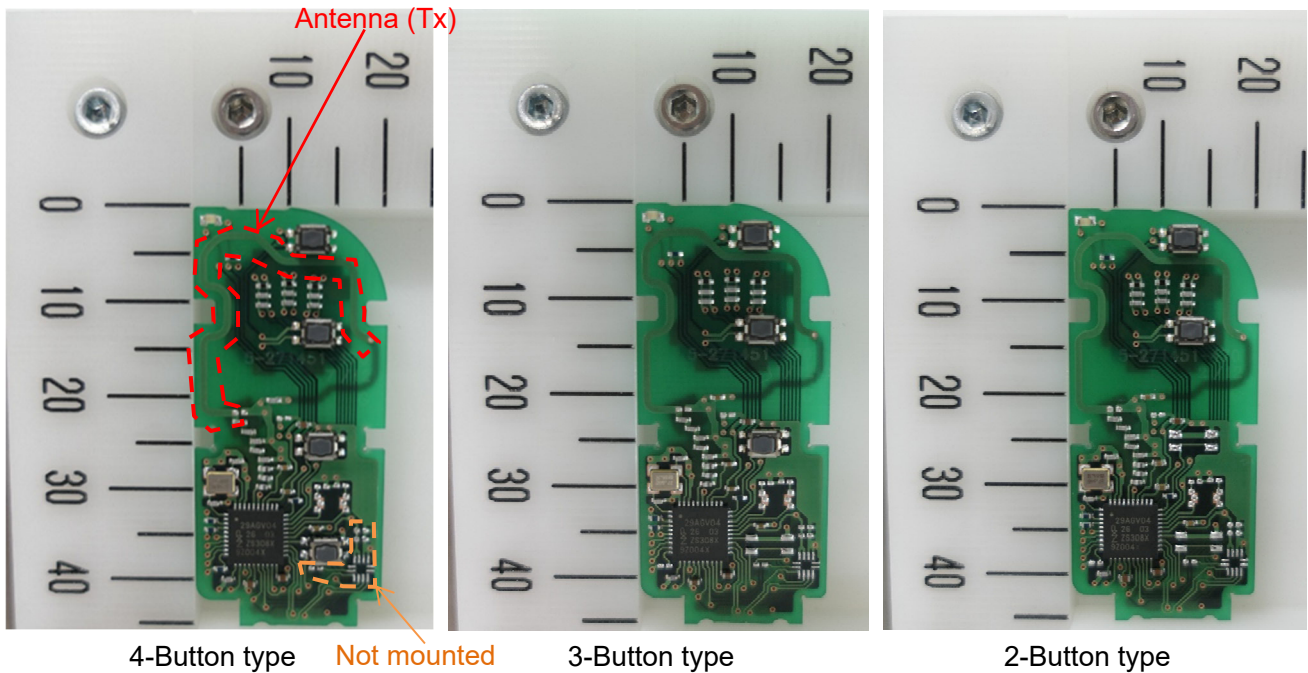
DENSO CORPORATION

Electronic Key

Model: 14FNA

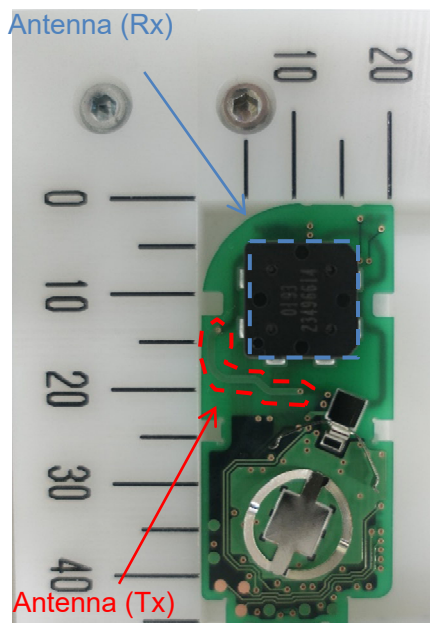
Internal Photos (Type B: IC2, R7, C7 and C8 are not mounted.)

Component side



Solder side (Common)

Marking location



Note:

The difference in the number and / or location of switches has no influence on RF performance.

Type A and Type B are equivalent in terms of RF performance.