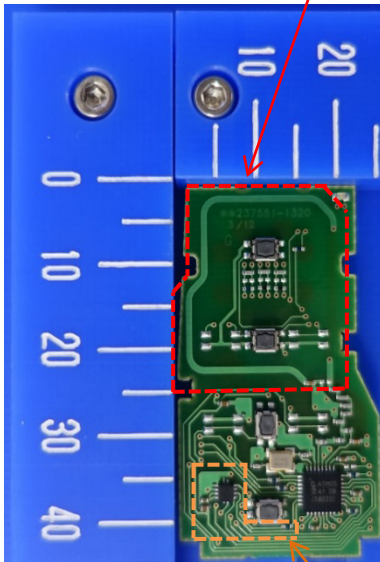


DENSO CORPORATION
Electronic Key
FCC ID: HYQ14FLE
IC Number: 1551A-14FLE

Internal Photos (Type A: IC2, R6, C5 and C6 are mounted.)

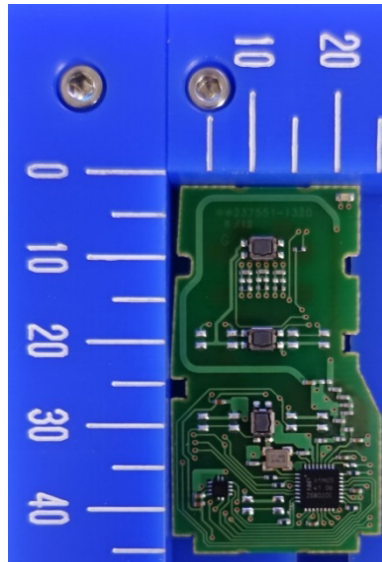
Component side

Antenna (Tx)

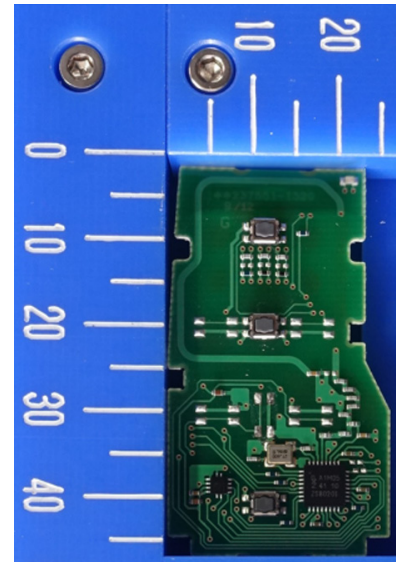


4-Button type

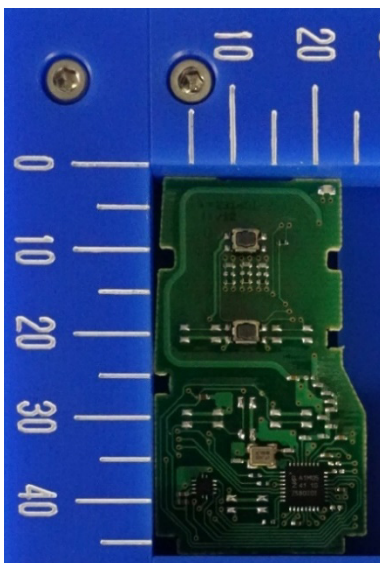
IC2, R6, C5, C6



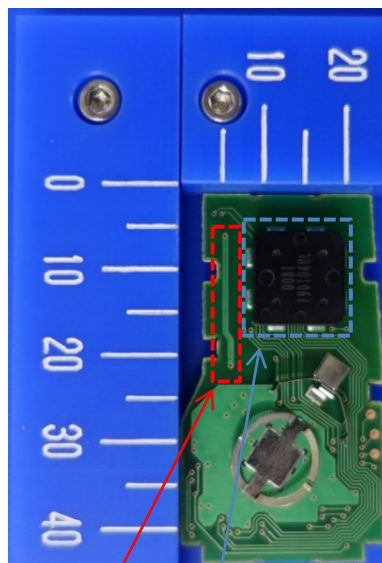
3-Button type



Solder side (Common)



2-Button type



Antenna (Tx)

Antenna (Rx)

Marking location

< Inside the outer case >



< On the module cover >



Note:

The difference in the number and / or location of switches has no influence on RF performance.

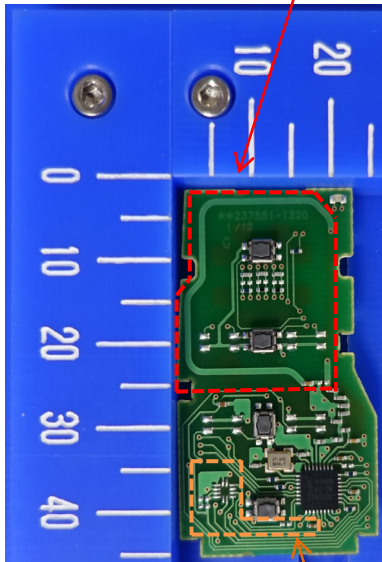
Type A and Type B are equivalent in terms of RF performance.

Marking location is inside the outer case or on the module cover.

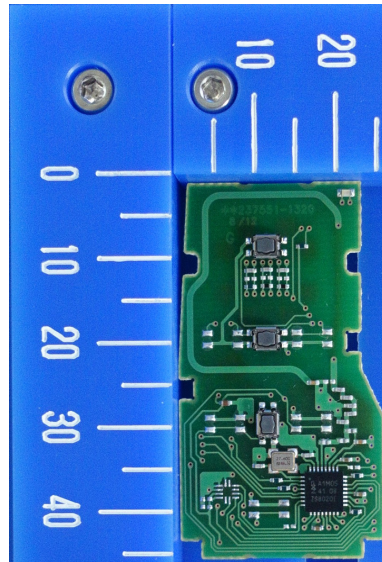
DENSO CORPORATION
Electronic Key
FCC ID: HYQ14FLE
IC Number: 1551A-14FLE

Internal Photos (Type B: IC2, R6, C5 and C6 are not mounted.)

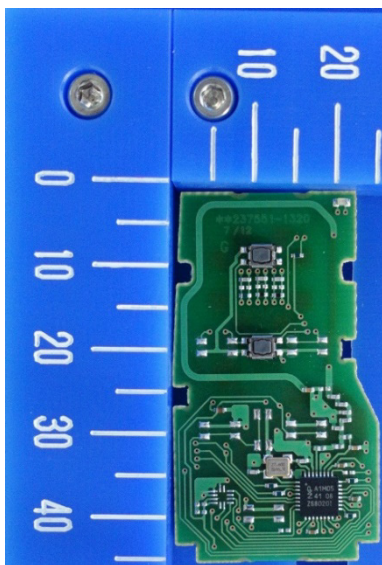
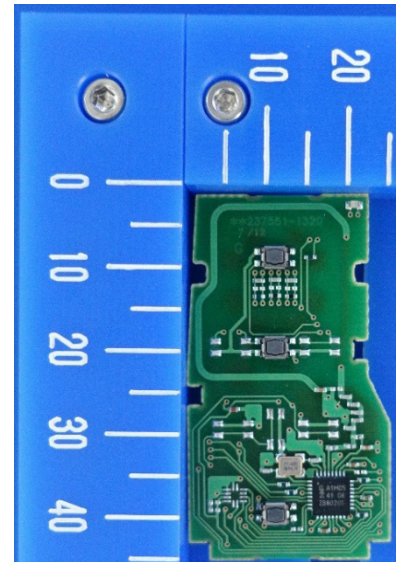
Component side **Antenna (Tx)**



4-Button type **Not mounted**

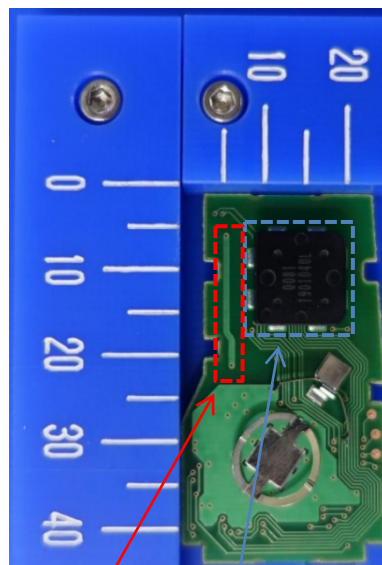


3-Button type



2-Button type

Solder side (Common)



Antenna (Tx) **Antenna (Rx)**

Marking location

< Inside the outer case >



< On the module cover >



Note:

The difference in the number and / or location of switches has no influence on RF performance.

Type A and Type B are equivalent in terms of RF performance.

Marking location is inside the outer case or on the module cover.