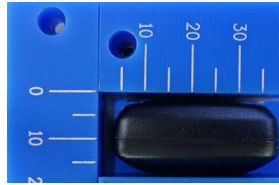


**DENSO CORPORATION**  
**Electronic Key**  
**FCC ID: HYQ14FLE**  
**IC Number: 1551A-14FLE**

External Photos (Pattern A)



Top View



Left View



Front View



Right View



Rear View



Bottom View

Note:

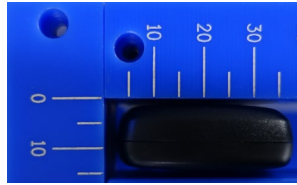
14FLE has two patterns: Pattern A and Pattern B.

The difference in two patterns is the cases, with or without metal, and the difference has no influence on RF performance.

Mechanical key is made by other manufacturer, and it is not a part of EUT.

**DENSO CORPORATION**  
**Electronic Key**  
**FCC ID: HYQ14FLE**  
**IC Number: 1551A-14FLE**

External Photos (Pattern B)



Top View



Left View



Front View



Right View



Rear View



Bottom View

Note:

14FLE has two patterns: Pattern A and Pattern B.

The difference in two patterns is the cases, with or without metal, and the difference has no influence on RF performance.

Mechanical key is made by other manufacturer, and it is not a part of EUT.

**DENSO CORPORATION**  
**Electronic Key**  
**FCC ID: HYQ14FLE**  
**IC Number: 1551A-14FLE**

Explanation of variation (Pattern A)

[4-Button type]



[3-Button type]



[2-Button type]



[Rear View (Common)]



Note:

14FLE has two patterns: Pattern A and Pattern B.

The difference in two patterns is the cases, with or without metal, and the difference has no influence on RF performance.



**DENSO CORPORATION**  
**Electronic Key**  
**FCC ID: HYQ14FLE**  
**IC Number: 1551A-14FLE**

Explanation of variation (Pattern B)

[4-Button type]



[3-Button type]



[2-Button type]

[Rear View (Common)]



Note:

14FLE has two patterns: Pattern A and Pattern B.

The difference in two patterns is the cases, with or without metal, and the difference has no influence on RF performance.