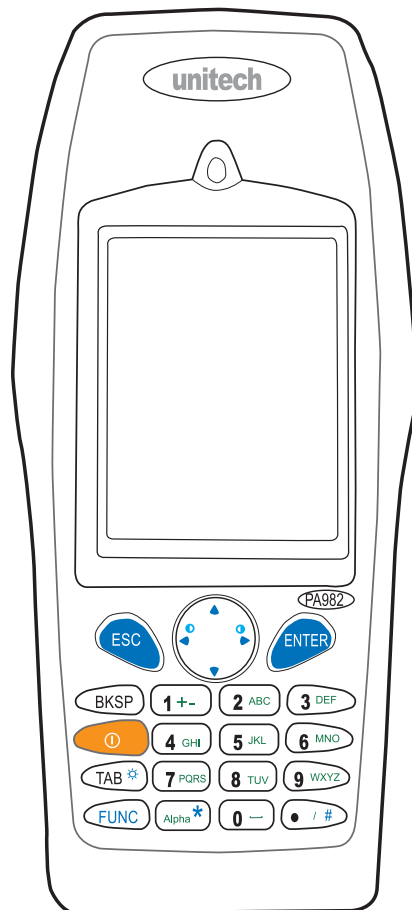


PA982 Ultra Rugged Mobile Computer



User's Manual



About This Manual

This manual explains how to install, operate and maintain the PA982 Ultra Rugged Mobile Computer.

No part of this publication may be reproduced or used in any form, or by any electrical or mechanical means, without permission in writing from the manufacturer. This includes electronic or mechanical means, such as photocopying, recording, or information storage and retrieval systems. The material in this manual is subject to change without notice.

© Copyright 2006 Unitech Electronics Co., Ltd. All rights reserved.

Unitech global website address: <http://www.unitech-adc.com.tw>

Bluetooth is a registered trademark of Bluetooth SIG.



Microsoft, Windows and ActiveSync are either registered trademarks or trademarks of Microsoft Corporation. Other product names mentioned in this manual may be trademarks or registered trademarks of their respective companies and are hereby acknowledged.



Regulatory Compliance Statements

FCC Statement

This is a FCC Part 15 Class B product. In a domestic environment this product may cause radio interference, in which case the user may be required to take adequate measures.

Canadian Compliance Statement

This Class B Digital apparatus meets all requirements of the Canadian Interference-Causing Equipment Regulations.

Cet appareil numérique de la classe B respecte les exigences du Règlement sur le matériel brouilleur du Canada.

The device is certified to the requirements of RSS-139-1 for 2.4 GHz spread spectrum devices.

European Conformity Statement

Declaration of Conformity with Regard to the R&TTE 1999/5/EC and EMC 89/336/ EEC directives.

Laser Information

The Unitech PA982 series is certified in the U.S. to conform to the requirements of DHHS/CDRH 21CFR Subchapter J and to the requirements of IEC 825-1. Class II and Class 2 products are not considered to be hazardous. The PA982 series contains internally a Visible Laser Diode (VLD) whose emissions do not exceed the maximum limits as set forth in the above regulations. The scanner is designed so that there is no human access to harmful laser light during normal operation, user maintenance or during prescribed service operations.

The laser safety warning label required by the DHHS/IEC for the PA982 series's optional laser scanner module is located on the memory compartment cover, on the back of the unit.

CAUTION! Use of controls or adjustments or performance of procedures other than those specified herein may result in hazardous laser light. Use of optical instruments with the scanner will increase eye hazard. Optical instruments include binoculars, microscopes, and magnifying glasses. This does not include eye glasses worn by the user.

Notices

This unit is equipped with a battery pack and backup battery. It is possible that the Unitech PA982 may not power-on due to battery discharge as a result of storage.

In the above situation, plug the PA982 to the USB charging cable which is with DC in port or put the unit into the Unitech PA982 Cradle (with 12V/2A AC-DC adapter), and recharge the unit for 16 hours in order to fully charge its backup battery.

The backup battery will charge from external power or the main battery (if the main battery still has enough power to turn on). In the event the main battery is fully charged, refrain from using the PA982 for 16 hours in order for the main battery to fully charge the backup battery.

Backing-up data by backup battery only without the main battery installed in battery compartment may take as long as 6 hours. Therefore, in order to prevent data protection failure due to backup battery failure, do not leave the PA982 without the rechargeable battery pack installed, or without connection to AC power for an extended period of time.

Battery Charge Notice

It is important to consider the environment temperature whenever you are charging the Lithium-Ion battery pack. The process is most efficient at normal room temperature or slightly cooler. It is essential that you charge batteries within the

stated range of -5°C to 50°C. Charging batteries outside of the specified range could damage the batteries and shorten their charging life cycle.

Storage and Safety Notice

Although charged Lithium-Ion batteries may be left unused for several months, their capacity may be depleted due to build up of internal resistance. If this happens they will require recharging prior to use. Lithium-Ion batteries may be stored at temperatures between -20°C to 60°C, however they may be depleted more rapidly at the high end of this range. It is recommended to store batteries within normal room temperature ranges.

Table of Contents

PA982 Ultra Rugged Mobile Computer	i
------------------------------------	---

Preface

About This Manual	i
-------------------	---

Regulatory Compliance Statements	i
---	---

FCC Statement	i
---------------	---

Canadian Compliance Statement	i
-------------------------------	---

European Conformity Statement	i
-------------------------------	---

Laser Information	ii
--------------------------	----

Notices	ii
----------------	----

Battery Charge Notice	ii
-----------------------	----

Storage and Safety Notice	ii
---------------------------	----

Chapter 1

Getting Started	1
-----------------	---

Introducing the PA982	1
------------------------------	---

Features	2
-----------------	---

Package Contents	3
-------------------------	---

A Tour of the PA982	4
----------------------------	---

Front Left View	4
-----------------	---

Back View	5
-----------	---

Setting up the PA982	6
-----------------------------	---

Installing the Battery	6
------------------------	---

Charging the Battery	8
----------------------	---

<i>Charging the Battery using the RS232 Charging Cable</i>	8
--	---

<i>Charging the Battery with the Docking Station</i>	9
--	---

<i>Checking the Battery Status</i>	10
------------------------------------	----

Connecting the PA982 to a PC	10
------------------------------	----

Turning the PA982 on for the First Time	11
--	----

<i>Powering On</i>	11
--------------------	----

<i>Calibrating the PA982 Screen</i>	11
-------------------------------------	----

<i>Setting the Time and Date</i>	12
----------------------------------	----

<i>Adjusting the Screen Brightness</i>	12
--	----

Chapter 2

Using the Hardware	13
--------------------	----

Using the Alpha Key	13
---------------------	----

Using Hotkeys	14
---------------	----

Using the Stylus	15
-------------------------	----

Using the Laser Scanner	16
Chapter 3	
Getting Connected	17
Establishing Device-PC Connection	17
Installing Microsoft ActiveSync	17
Connecting the Device to Your Computer	17
Using ActiveSync to Exchange Files	19
Chapter 4	
Barcode Scanner Programs	21
Scanner Settings	21
Scan2Key	21
Barcode Symbolologies.....	22
Chapter 5	
Advance settings	23
Adjusting Settings	23
Checking the Main and Backup Battery Status	24
Extending Battery Life	25
Changing the Automatic Power Settings	25
Adjusting Backlight Setting	26
Performing a Hardware Reset	27
Performing a Cold Boot	28
Appendix	
System Specifications	29

Getting Started

Introducing the PA982

Thank you for purchasing the PA982 Ultra Rugged Mobile Computer. Your PA982 was designed for users needing a compact and durable portable computer for data collection and real time transactions.

Ultra-rugged Design

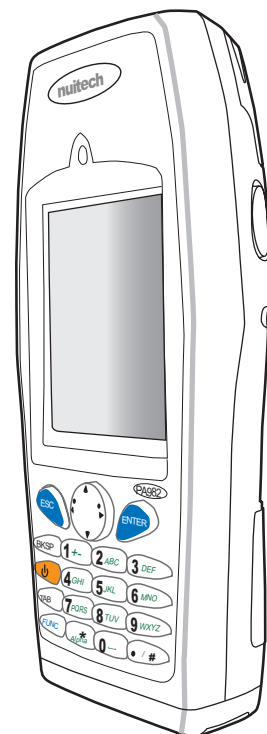
The Unitech PA982 Ultra Rugged Mobile Computer is a compact mobile computing device designed for maximum durability. The PA982 is compliant with IP67 to resist water and dust and is industry tested to meet harsh environmental operation requirements including underwater submersion up to one meter.

Easy to Use

The unit is equipped with large display, touch screen, and a 22-key keypad. The keypad is watertight and has high visibility backlit keys that allow for operation in dim light conditions. The PA982 supports integrated long range scanners for fast and accurate data collection.

Advanced Power Capacity

The double cell 7.4V 2080 mAH battery pack support operation up to 12 hours. An optional gun grip handle includes an additional battery for operation over extended periods.



Features

Powerful system

- Microsoft Windows CE.NET 5.0 Professional Plus operating system
- Intel Xscale PXA255 processor with speed up to 400Mhz
- Intel PXA270 processor with speed of up to 520 MHz

System memory

- 128 MB SDRAM
- 64 MB Flash ROM

Display

- 3.5-inch QVGA LCD touch-sensitive screen
- 320 x 240 resolution

Barcode scanner

- Built-in Bar Code Scan Engine
- Built-in vibrator for scanning indication
- CCD scan engine (optional)
- Long range capacity (optional)
- RFID reader (optional)
- Symbol SE1200 support
- UNITECH HAMSTER barcode decoder

Communication

- USB Host & Client
- IrDA 1.2 (SIR)
- GPRS (via expansion slot)
- VOIP support
- 802.11b (optional)
- Bluetooth version 1.2 (supports Bluetooth Printer, Bluetooth Modem, Bluetooth ActiveSync)

Wireless connectivity

- 802.11b
- Bluetooth wireless technology
- Serial infrared port

Expansion slot

PCMCIA Type II slot

Battery life


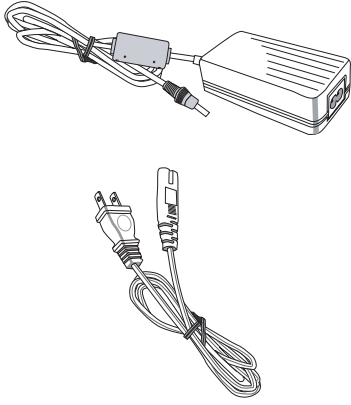
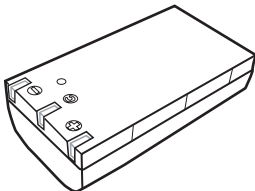
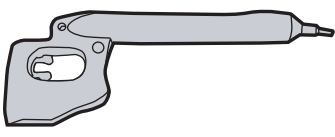
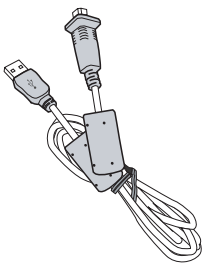
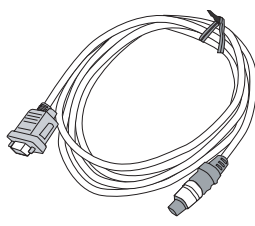
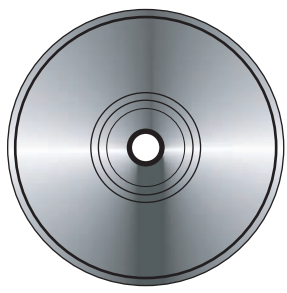
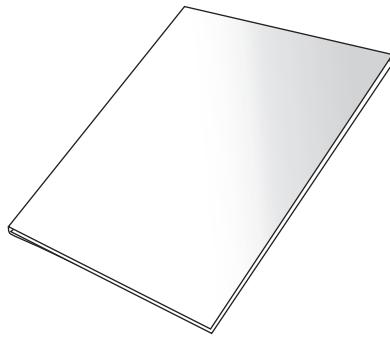
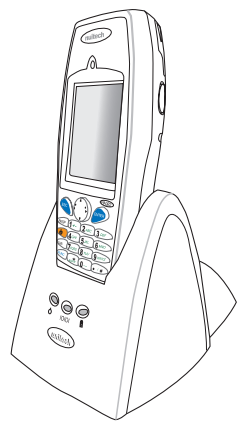
- Normal usage: 12 hours
- **Charging time: 3.5 hours**
- Embedded backup battery cell

User-friendly interface

- Quick launch hot keys for accessing often used system applications, calibration, and other device management tasks
- Keys for barcode scanning

Package Contents

After opening the box, ensure the following accessories for the PA982 are present:

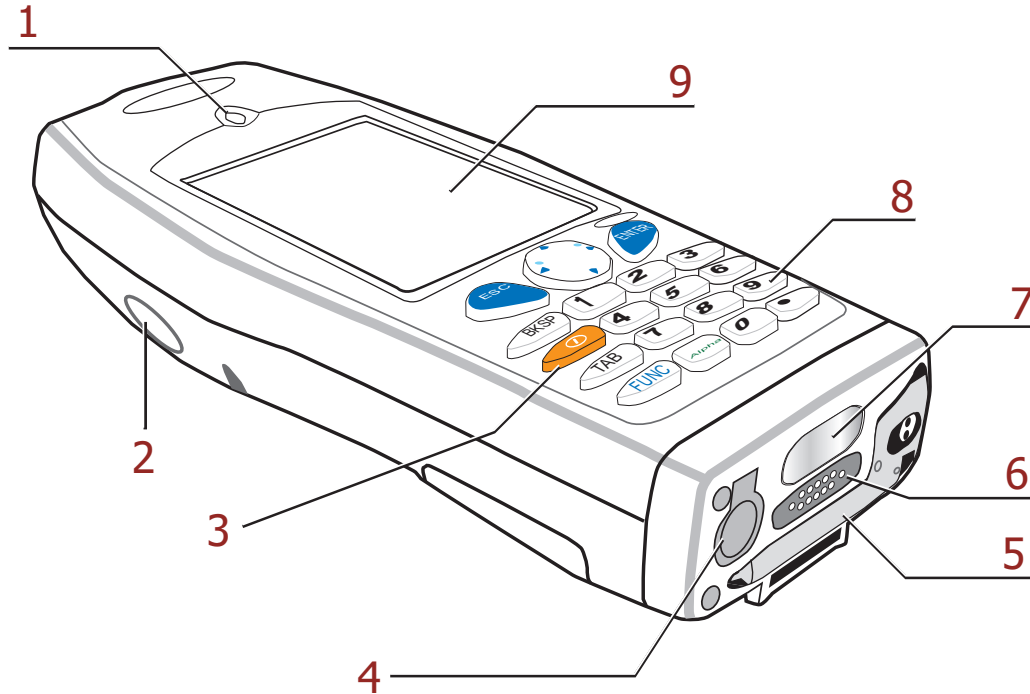
		
<p>PA982 Terminal</p>	<p>Power Adapter and Cable</p>	<p>Battery Pack</p>
		
<p>Stylus</p>	<p>USB Charging Cable (optional)</p>	<p>Synchronization and Power Cable</p>
		
<p>CD-ROM</p>	<p>Quick Reference Guide</p>	<p>Cradle (optional)</p>

If anything is missing or appears damaged in any way, contact your dealer.

A Tour of the PA982

The following sections describe the main components and features of the PA982.

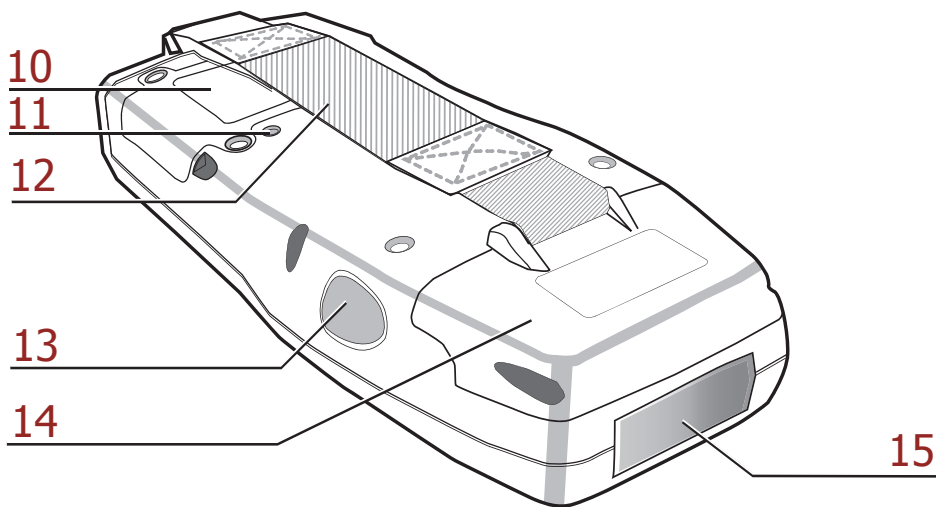
Front Left View



No.	Component	Description
1.	Status indicator	Indicates the battery charging and barcode scanning status. Green - Battery is fully charged, the device is running on battery power, or barcode scanning process is completed without error. Red - Battery is charging, barcode scanner is activated and processing.
2.	Left scanner trigger button	Press to activate the barcode laser scanner.
3.	Power button	If the device is off, press this button to turn it on. Alternatively, when the unit is on, this key must be pressed and held down for about two seconds in order to turn the device off.
4.	Universal connector	Connects your device to a USB charging cable, which in turn connects to the computer's USB port and through the AC adapter to an electrical outlet. This allows you to recharge your device and perform an ActiveSync operation. You can also use it to connect a peripheral hardware, such as an docking station, to your device.

5.	Stylus	Enables you to interact with the operating system. To use the stylus, remove it from its holder and hold it the same way you hold a pen or pencil.
6.	Desktop cradle connector	Enables you to interface with the optional desktop cradle.
7.	Infrared (IR) port	Uses infrared technology to transmit and receive data from other IR-enabled devices.
8.	Keypad	Keypad interface for controlling the PA982. See <i>Using the Hardware</i> on page 14 for more information.
9.	LCD Touch screen	Displays the applications and data stored on your device. It is touch-sensitive and responds to the stylus or finger.

Back View



No.	Component	Description
10.	Battery compartment	Houses the removable and rechargeable 7.4V 2080mAh lithium-ion battery pack
11.	Reset button	Press the end of the stylus into the button to reset your device.
12.	Handstrap	Enables you to securely hold the PA982 while using it.
13.	Right scanner trigger button	Press to activate the barcode laser scanner.
14.	PCMCIA compartment	Open this compartment to access the PCMCIA slot.
15.	Barcode scanner window	Used to scan barcodes.

Setting up the PA982

This section explains how to install and charge the battery, how to check battery status, how to connect the PA982 to a PC, how to turn on the PA982 for the first time how to install an optional Wireless Local Area Network PCMCIA card, and how to calibrate the screen.

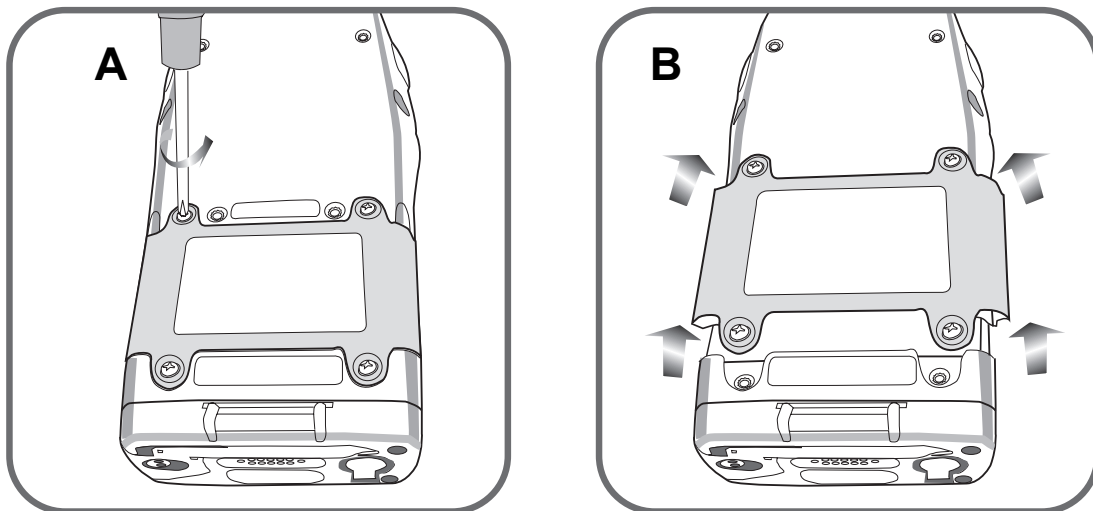
Installing the Battery

WARNING! There is a risk of fire and burns if the battery pack is handled improperly. DO NOT disassemble, crush, puncture, short external contacts, or dispose the battery pack in fire or water. DO NOT attempt to open or service the battery pack. Dispose of used batteries according to local recycling guidelines in your area.

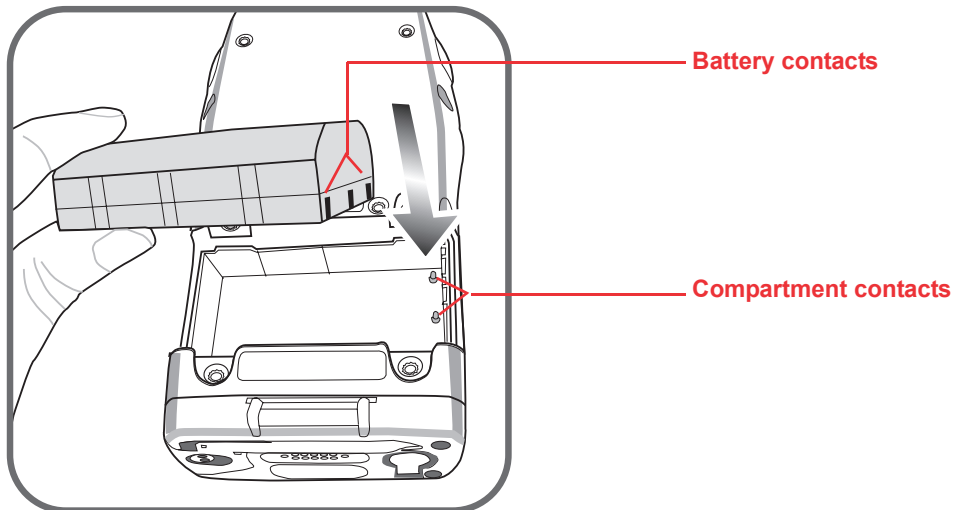
A backup battery cell is embedded into your device to prevent data loss in instances when the removable battery pack is removed or completely discharged. This backup battery cell will only support the system for a maximum of 60 minutes.

NOTE: To enable the internal battery cell to provide backup power supply, charge your device with the main battery pack for at least 12 hours.

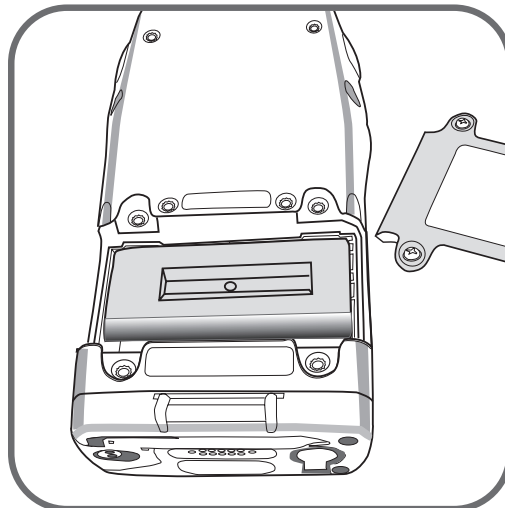
1. Open the battery compartment by removing the four screws that secure the battery compartment cover (A) and removing the cover (B).



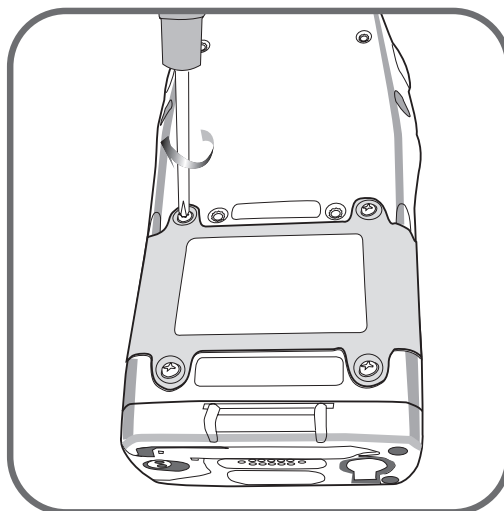
2. Position the battery pack, making sure the battery contacts are aligned with the contacts in the compartment, as shown in the following illustration.



3. Place the battery pack into the battery bay and press the battery securely into the compartment.



4. Replace the battery compartment cover and the four compartment screws.



Charging the Battery

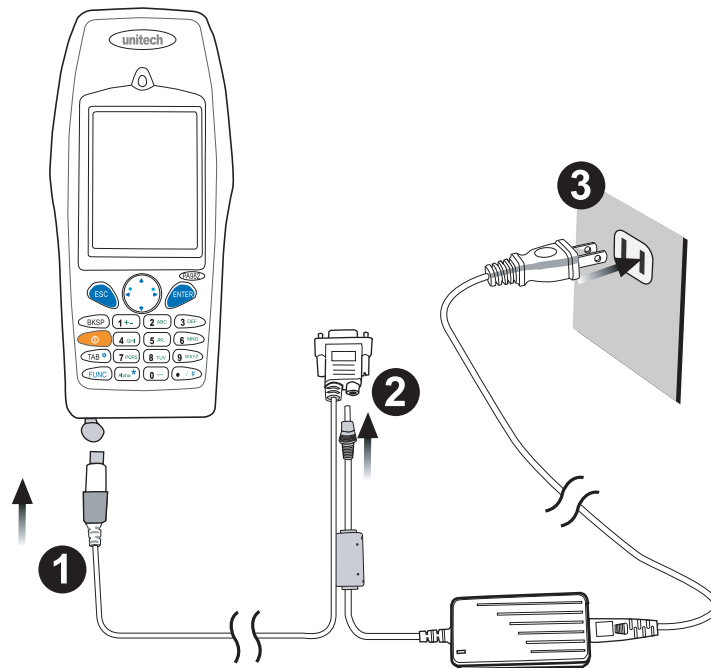
Before using the PA982 for the first time, you need to charge it for about 16 hours. After that, you can charge the PA982 every day to recharge the battery to full capacity. Charge the PA982 using the RS232 charging cable or the docking station.

CAUTION! Operating the PA982 for the first time without the AC adapter, and without fully charging the backup battery may result in loss of data stored in RAM memory.

When the main battery is removed, the backup battery retains RAM data in memory for 2 hours; charge the battery as soon as possible to avoid the data loss in RAM memory.

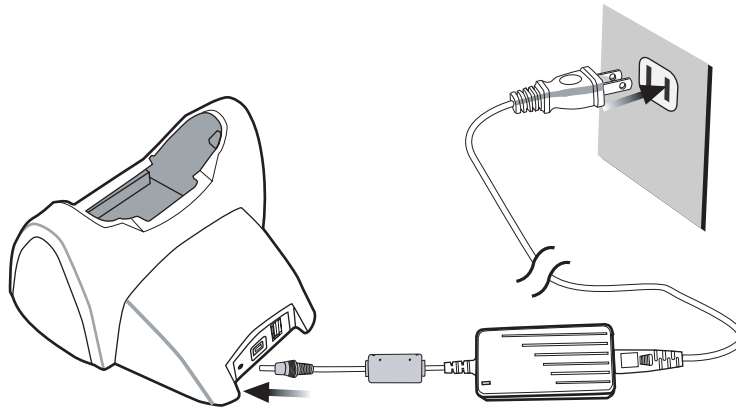
Charging the Battery using the RS232 Charging Cable

1. Connect the RS232 charging cable connector to the PA982 (1).
2. Plug the AC adapter cable into the power jack on the RS232 serial connector (2).
3. Connect the AC adapter into an electrical outlet (3).

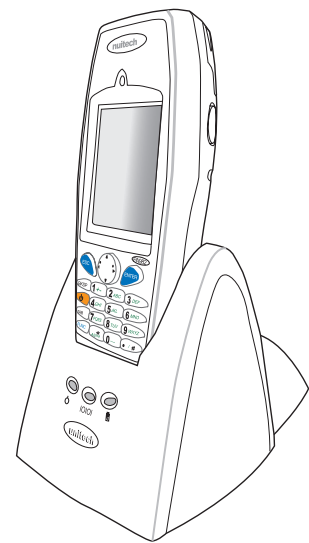


Charging the Battery with the Docking Station

1. Plug the AC adapter cable into the power jack on the docking station, then connect the AC adapter into an electrical outlet.






2. Slide the device into the docking station until it clicks into place.





3. The connection is secure when the bottom edge of the device is aligned with the docking station, and the LED indicator on the device lights up red.

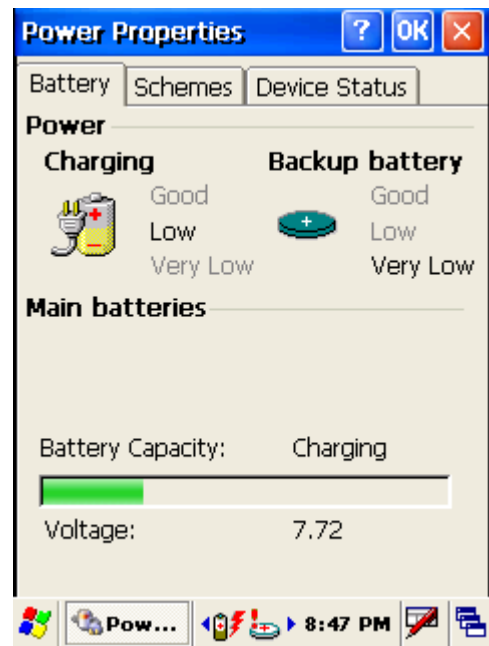
LED Status

	LED		Meaning
PA982	Solid Red		Charging
	Solid Green		Charging complete
Docking Station		Power LED	Power is on
		Charging LED	Charging
		Sync LED	Synchronization is taking place

Checking the Battery Status

If the main battery level becomes low in the course of normal use, a status icon  appears on the device screen system tray indicating low or very low battery status. In both cases, perform an ActiveSync operation to back up your data, then recharge your device as soon as possible. If the battery level reaches low status, the device will enter suspend mode; if the battery level reaches very low status, the device will enter deep sleep mode. In this case, you have about 72 hours to recharge your device after which you risk losing all data on your device's internal memory.

When the backup battery charge is low, an icon  appears in the system tray indicating that you should replace the backup battery as soon as possible.

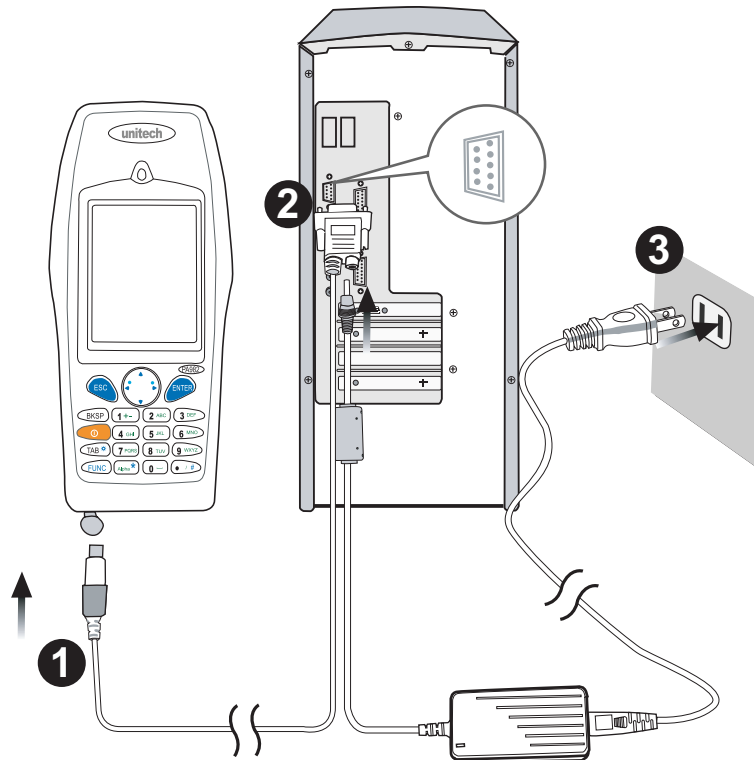


Main battery icon  Backup battery icon 

Connecting the PA982 to a PC

Use the RS232/charging cable to connect the PA982 to a PC to use with ActiveSync.

1. Connect the RS232 connector jack to the PA982 (1).
2. Plug the RS232 serial connector into a serial port on the PC and connect the AC adapter into the RS232 connector (2).
3. Connect the AC adapter into an electrical outlet (3).



Turning the PA982 on for the First Time

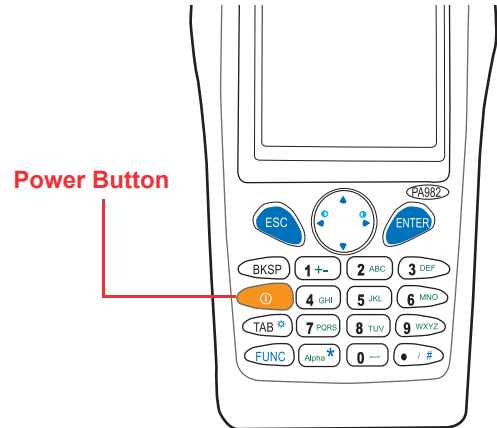
After you have initially charged your device for about 16 hours, the device is ready to be used. You can now start up your device where you'll adjust the screen brightness, calibrate the display, and set up the system time zone, date and time.

Powering On

1. Turn on your device by pressing the power button on the front panel.

NOTE: The PA982 screen ships with a protective plastic film. You may remove this if desired by peeling from one corner. The screen will be more susceptible to scratching without the film, but will be more readable.

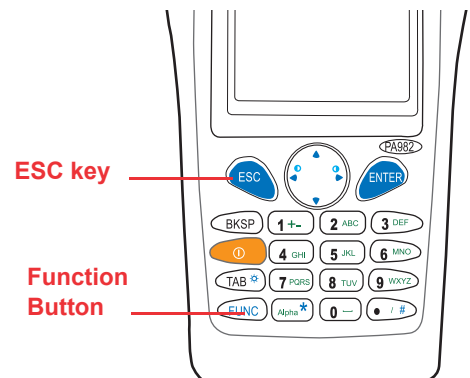
2. The Unitech PA982 welcome screen appears for a moment followed by the calibration screen.



Calibrating the PA982 Screen

The calibrate screen automatically appears when the unit is powered-on for the first time or after the system is reset.

This screen will automatically appear when the unit is powered-on for the first time or after the system is reset. This screen can also be accessed at any time by pressing the hot key [FUNC] and the [ESC] key.



The PA982 prompts you to calibrate the unit by tapping a sequence of screen locations. Tap gently but firmly.

Carefully press and briefly hold stylus on the center of the target. Repeat as the target moves around the screen. Press the Esc key to cancel.

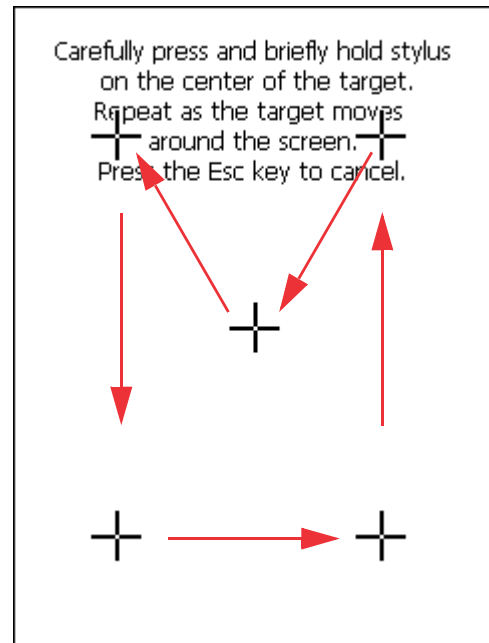
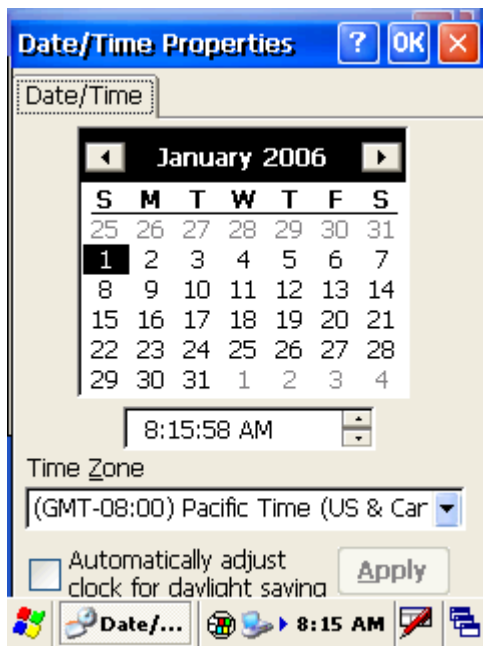


When you have completed the series of taps, press the [ENT] key to confirm calibration or press the [ESC] key to cancel it.

After confirming calibration, the Date/Time Properties screen appears prompting you to set the date and time.

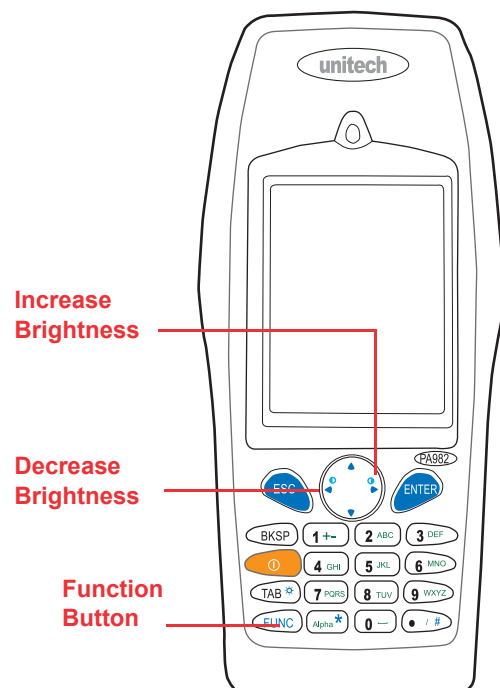
Setting the Time and Date

In the Date/Time Properties window, use the stylus to select the current date and time, time zone, and daylight saving time option.













Adjusting the Screen Brightness

Adjust the screen brightness by pressing the Function button [FUNC] to enable the soft keys and pressing the left (decrease brightness) or right (increase brightness) cursor buttons.



Using the Hardware

The following table describes the main keypad keys.

Key	Main Function
	Press this button to turn the PA982 on. Press and hold this button for two seconds to turn the PA982 off.
	Pressing this button corresponds to tapping the cancel or X button on the screen.
	Press the backspace key to erase characters.
	Press the function key to perform alternative key functions. Refer to <i>Using Hotkeys</i> on page 15.
	Use the tab key to toggle between fields or to tab forward in word processing applications.
	Press the enter key to confirm an action or entry by the user.
	Use the cursor keys to navigate in applications. Press and hold the Function key and then press the right and left arrows to raise and lower the screen brightness.
	Press the alpha key to toggle between numeric and alphabetic entry modes. This key also toggles between upper and lower case alphabetic characters.
	Press these keys to enter numbers or characters depending on whether the Alpha key has been pressed. Press the 0 key to enter a space.
	Press this key to add punctuation.



Using the Alpha Key

When the PA982 boots, the default condition is Numeric Mode on. When you toggle to Alpha Mode, the default condition is CAPS mode off.

Alpha Mode	Press alpha to alpha mode, the default condition is CAPS off.
CAPS	Press Alpha key twice to toggle CAPS
Key in	Press Cursor-UP to enter selected character.

Using Hotkeys

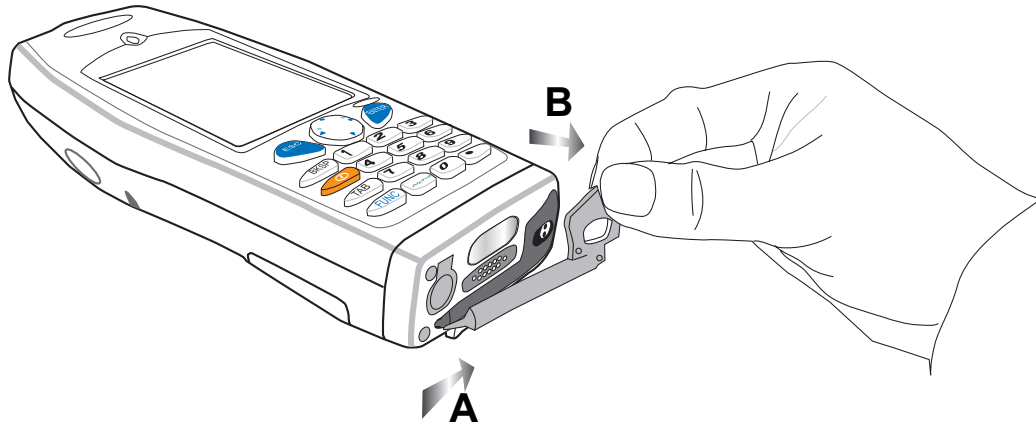
The PA982 provides eight combination hot keys to activate specified screen setting functions or programs. These hotkeys are useful for calibrating the touch screen, toggling the backlight, and adjusting screen contrast when the menu-driven operation is disabled. Below is the list of hotkeys. To use them, press and hold the [FUNC] key in combination with the corresponding second key.

[FUNC] + [ESC]	Check stylus properties and re-calibrate the PA982 touch screen.
[FUNC] + 	Decrease screen brightness
[FUNC] + 	Increase screen brightness
[FUNC] + [TAB*]	Toggle screen and LCD backlight.
[FUNC] + [6]	Open the Task manager
[FUNC] + [7]	Scanner Setting.exe
[FUNC] + [8]	Open the Power Properties dialog
[FUNC] + [9]	Open System Information
[FUNC] + [0]	Space
[FUNC] + [Cursor ▲]	Toggle Display Backlight
[FUNC] + [Cursor ▼]	Toggle Keypad LED Backlight

Using the Stylus

CAUTION! Never use anything other than the PA982 stylus on the screen. Using another object as a stylus could cause permanent damage.

1. Slide the stylus in the direction of the arrow (**A**) and then pull out (**B**) to remove the stylus from its holder.



2. Hold the stylus as you would a pencil.
3. To make a choice from a menu, lightly tap the tip of the stylus on that choice.
4. To write data into a field on a form, use the stylus to print the letters or numbers.

Using the Laser Scanner

The PA982 has an integrated laser scanner which reads all major bar code labels with excellent performance.

NOTE: Reading software must be enabled in order to operate the scanner. This can be a user-loaded application or a pre-loaded utility such as Scanner Setting.

Activate the laser scanner by pressing either one of the trigger keys located on the left and right side of the unit.

The PA982 has a built-in Scanner Setting utility that allows you to test the device's barcode scan function.

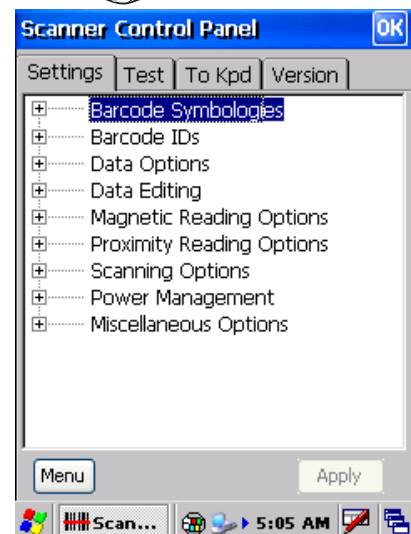


1. To launch Scanner Settings, press [FUNC] + [7].

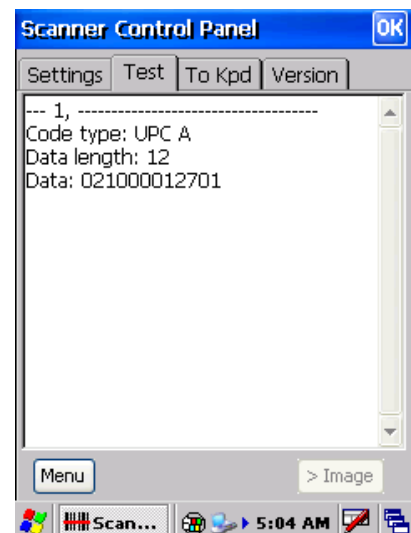
NOTE: Alternatively, tap **Start** → **Settings** → **System** → **Scanner Settings**.

2. The Scanner Control Panel opens.

From here you can configure barcode scanner parameters such as enabling or disabling barcode symbologies, setting data transmission options, configuring magnetic and proximity reading options, and setting power management options.



3. To test the barcode scanner, tap the Test tab and press one of the scanner buttons on a barcode. The screen will display the results of the scan.



Getting Connected

The Unitech PA982 enables users to link to a host computer using an RS-232 or IrDA connection for data communication. This chapter provides an overview of PA982 communication options.

Establishing Device-PC Connection

Installing Microsoft ActiveSync

In order to exchange data between your computer and the PA982, Microsoft ActiveSync must be installed on your computer. Use the RS232 serial/charging cable that comes with your device or the docking station to connect the device to your computer.

NOTE: If you have a previous version of the Microsoft ActiveSync installed in your computer, uninstall it first before installing the latest version of Microsoft ActiveSync.

To install Microsoft ActiveSync on your computer:

1. Close any open programs, including those that run at startup, and disable any virus-scanning software.
2. Download the ActiveSync software from the Microsoft ActiveSync Download page at <http://www.microsoft.com/windowsmobile/downloads/activesync42.msp>.
3. Browse to the location of the downloaded file, and double-click it. The installation wizard begins.
4. Follow the instructions on the screen to install Microsoft ActiveSync.

Connecting the Device to Your Computer

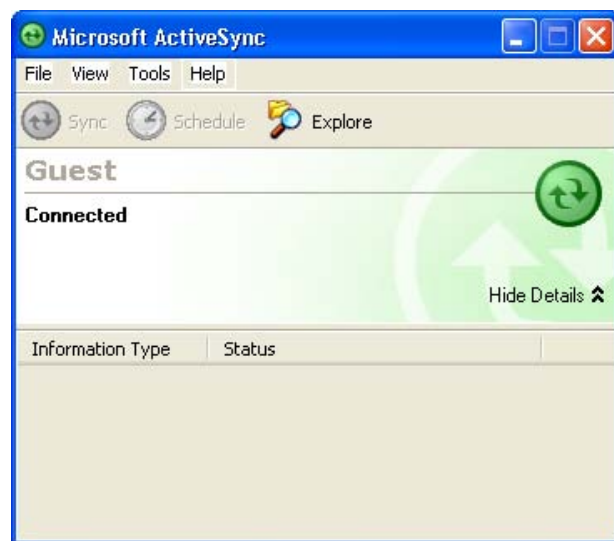
1. After ActiveSync has been installed, connect the PA982 to your PC as described in *Connecting the PA982 to a PC* on page 10.
2. Turn the PA982 on.
3. ActiveSync starts automatically and configure the USB port to work with the PA982. The New Partnership setup wizard automatically starts.



NOTES: If ActiveSync doesn't start automatically, click **Start** → **Programs** → **Microsoft ActiveSync**.

If a message appears indicating that it is unable to detect a connection, click the **Cancel** button and manually configure the communication settings.

4. Follow the onscreen instructions.
5. When the configuration process is complete, the ActiveSync window appears.



6. Synchronization will be initialized and will take place if you've chosen to synchronize periodically or upon connection.

NOTE: Your computer can create a partnership with multiple PA982s. Also, a PA982 can create a partnership with up to two computers.

Using ActiveSync to Exchange Files

You can use ActiveSync to exchange information from your device your computer and vice versa. Changes you make to the information on one location will not affect the information on the other one. If you want to automatically update information on both your device and computer, synchronize the information instead.

You can copy two types of information to your device: files and Pocket Access Windows CE Store information.

The following procedure only applies to copying files. Refer to the ActiveSync Help on your computer for instructions on how to copy Pocket Access Windows CE Store information.

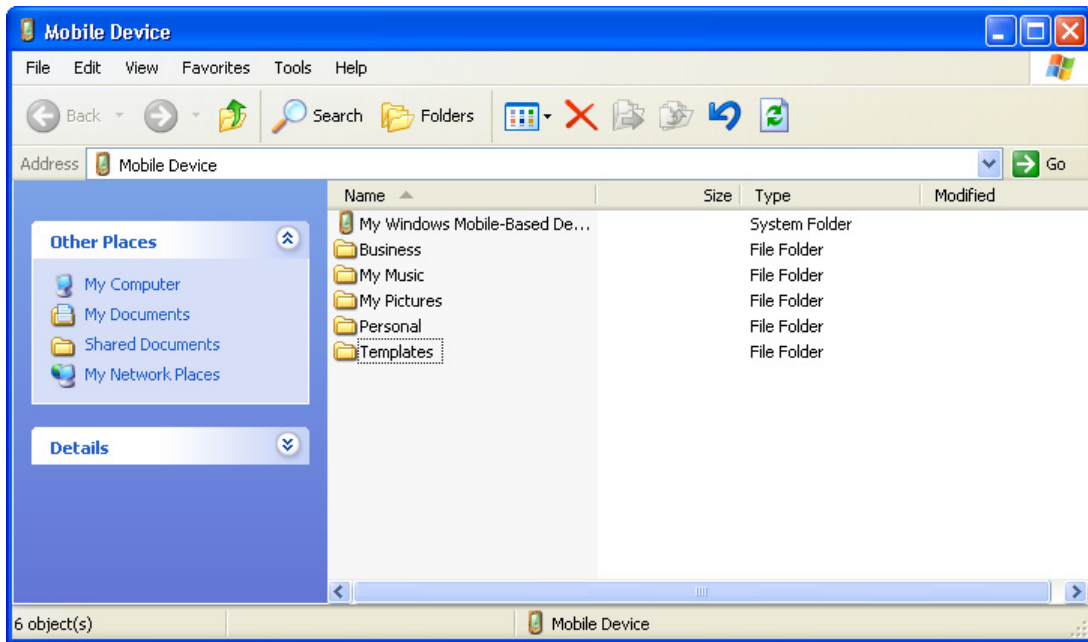
NOTE: Files created on your computer may need to be converted by ActiveSync so that they can be viewed and edited on your device, and vice versa.

To copy files:

1. Connect your device to your computer.
2. In ActiveSync on your computer, click **Explore**.



Windows Explorer opens the Mobile Device window for your device.



3. Locate the file that you want to copy on your device or computer.
4. Do either one of the following:
 - To copy the file to your device, right-click the file and click **Copy**. Place the cursor in the desired folder for your device, right-click, then click **Paste**.
 - To copy the file to your computer, right-click the file and click **Copy**. Place the cursor in the desired folder for your computer, right click, then click **Paste**.

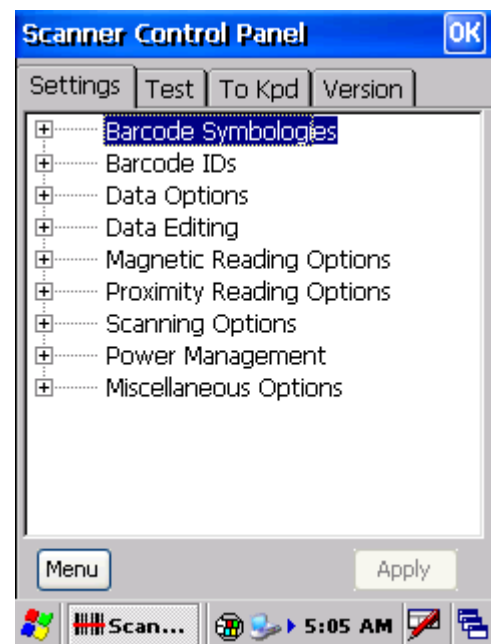
Barcode Scanner Programs

Scanner Settings

When it is necessary for the user to change the default barcode symbology for a different application, the Scanner Control Panel provides the ability to change default symbology, place delimiter characters behind scanned data, and save the settings.

Press [FUNC] + 7 to display the Scanner Control Panel.

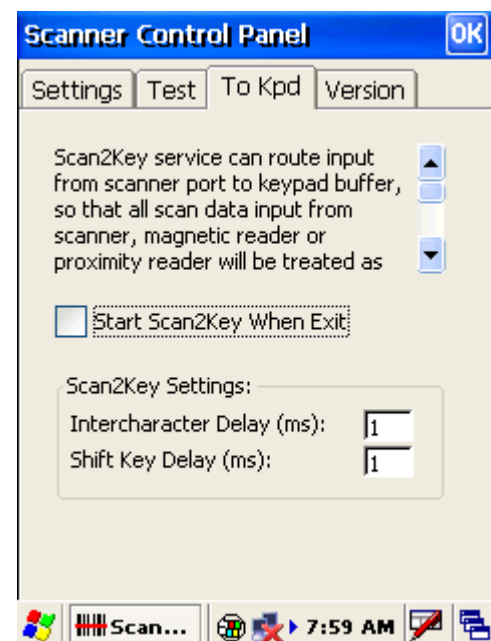
NOTE: Alternatively, tap **Start** → **Settings** → **System** → **Scanner Settings** to display the Scanner Control Panel.



Scan2Key

The Scan2Key application routes input from a scanner port to a keypad buffer, making all input from the scanner emulate input from the keypad. Using Scan2Key, scanned data can be directly input into a scanner port aware application such as MS Mobile Word.

Press [FUNC] + [7] to display the Scanner Control Panel, then tap **To Kpd** to access Scan2Key settings.



Barcode Symbologies

Symbology	Enable / Disable	Send Check Digit	Max/Min Length	Send Leading Digit	Other
Code 39	Yes	Yes	Yes	—	Full ASCII Send Start/Stop Character
I 2 of 5	Yes	Yes	Yes	—	Send Start/Stop Character Fix Length
S25/Toshiba	Yes	Yes	Yes	—	Fix Length
Code 32	Yes	—	—	—	Send Leading Code Send Trailing Code
Telpen	Yes	—	—	—	Character Set
EAN 128	Yes	—	—	—	—
Code 128	Yes	—	Yes	—	—
MSI/Plessey	Yes	Yes	Yes	—	Check Digit Module
Code 93	Yes	—	Yes	—	—
Code 11	Yes	Yes	Yes	—	One/Two Check Digit
CodaBar	Yes	Yes	Yes	—	Send Start/Stop Character CLSI Format On
Label Code	Yes	Yes	—	—	—
UPC-A	Yes	Yes	—	Yes	—
UPC-E	Yes	Yes	—	Yes	Zero Expansion OnEnable NSC
EAN 13	Yes	Yes	—	Yes	Enable Bookland
EAN 8	Yes	Yes	—	Yes	—
Delta Code	Yes	Yes	—	—	Calculate Check Digit
Supplement	—	—	—	—	Supplement 2 Supplement 5 Space Separator Inserted If Present, Transmit / Presence Required

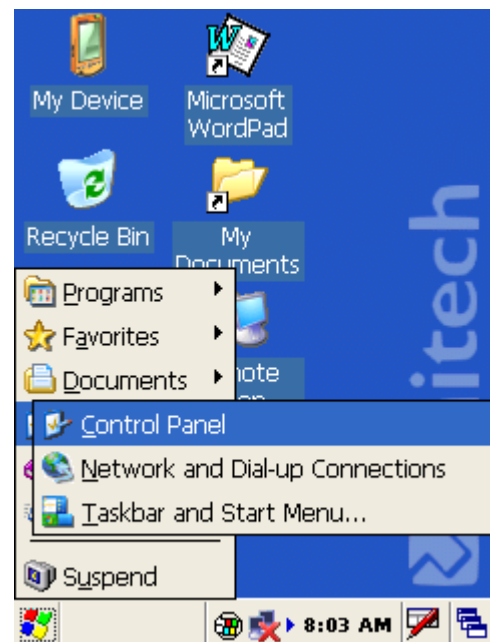
Note: *Value Adjustable Scanner Control Panel V3.0

Advance settings

Adjusting Settings

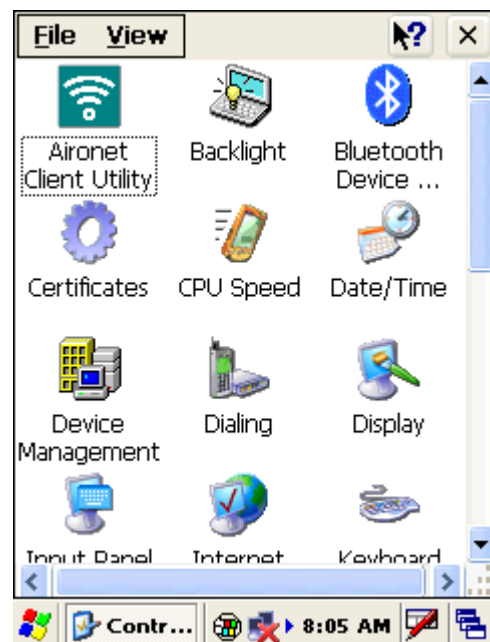
This section describes how to adjust the settings of your device to accommodate your work habits.

To access Settings, tap **Start** → **Settings** → **Control Panel**.



The Control Panel appears.

From here you can adjust such user configurable items as the backlight, auto power off timer, system volume, and processor speed. You can also assign functions to buttons, configure menus, enter owner information, and set up connections.

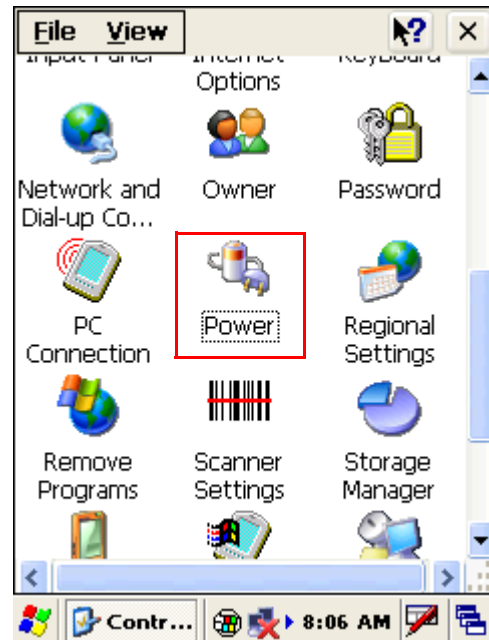


Checking the Main and Backup Battery Status

This section describes how to view the power level for both the main and backup battery. To minimize power consumption, you can define settings for the auto-off function and the processor's operation speed.

To check the main and backup battery status:

1. Tap **Start** → **Settings** → **Control Panel** → **Power**:

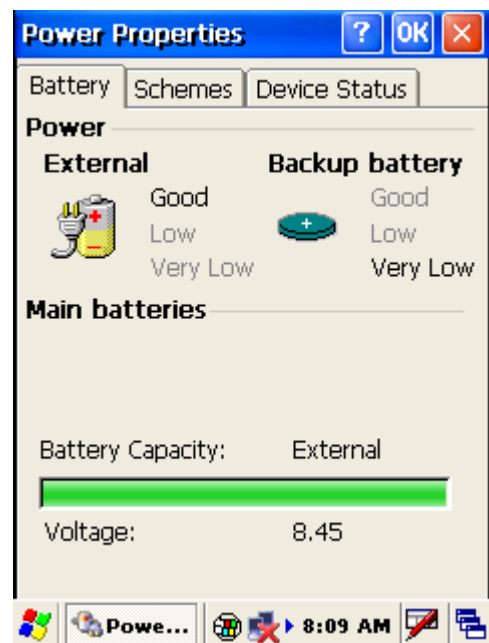


The Power Properties screen appears.

2. The battery menu item displays the status of the main and backup batteries.

On the screen shown here, the main battery is good, but the backup battery charge is very low. You should replace the backup battery as soon as possible in this case.

NOTE: It is necessary to charge the battery when the battery charge reaches below 10%. If the battery does not accept a charge, contact Unitech Technical Support.



Extending Battery Life

You can extend the PA982 battery life by doing either of the following:

- Changing the automatic power settings
- Minimizing the use of backlight

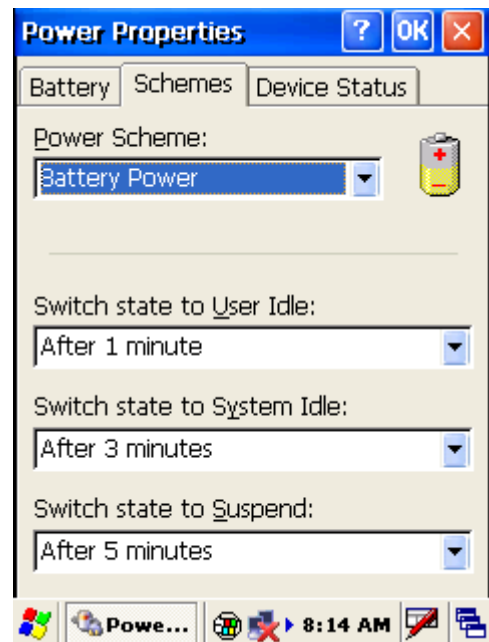
Changing the Automatic Power Settings

The PA982 enters idle mode when there is no task, or all tasks are waiting for input. In the default setting, the PA982 enters User Idle mode when there is no user input after one minute. The remains idle for 3 minutes and when there is no external charging power connected. Pressing the power button returns the PA982 to the same point at the time of automatic shutdown.

To change the automatic power settings:

1. In the Power Properties screen tap the **Schemes** tab.
2. Tap the automatic shut off time arrow to select from a list of time periods for the following modes:
 - **User Idle:** the PA982 switches to User Idle mode when there is no user input after the selected time.
 - **Switch state to System Idle:** the PA982 switches to from User Idle mode to System Idle mode when the system is inactive after the selected time.
 - **Switch state to Suspend:** the PA982 switches from System Idle mode to Suspend mode when the system is inactive after the selected time.

The available time periods are 1, 2, 3, 4, 5, 10, 30 minutes and Never.

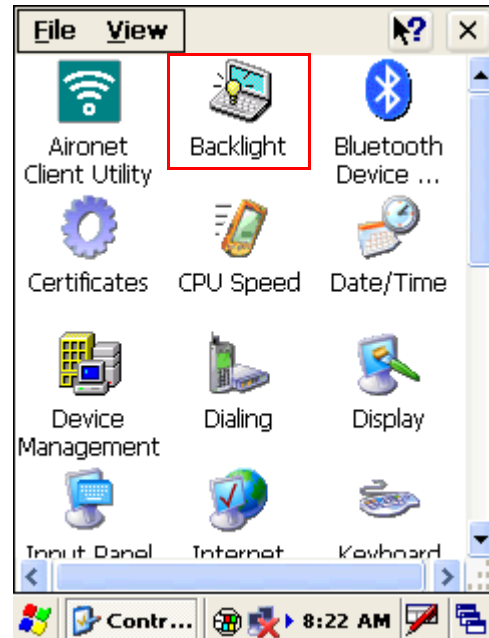


Adjusting Backlight Setting

The power consumption of the LCD backlight is high. To conserve battery power, turn off the backlight function if it is not necessary.

To change backlight settings:

1. Tap **Start** → **Settings** → **Control Panel**.
2. Tap **Backlight**.



The Backlight screen appears.

3. Click the **Battery Power** or **External Power** radio button and do any of the following:

- Tap the **Dim backlight if device is not used for** check box and select the amount of time before the unit reduces the backlight intensity from the drop-down list.
- Tap the **Turn off backlight if device is not used for** check box and select the amount of time before the unit turns off the backlight from the drop-down list.
- Tap the **Turn on the backlight key...** checkbox to activate the backlight when the screen is tapped or a button is pressed.



- Use the slider bars to select the intensity of the backlight when it is fully on or dimmed.

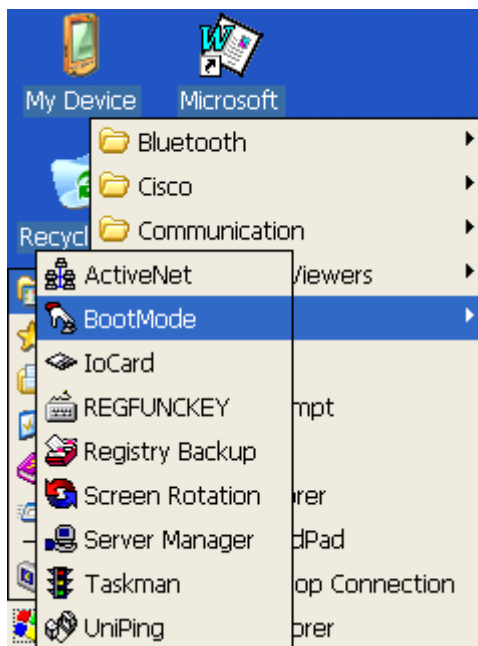
Performing a Hardware Reset

You may have to perform a reset if the device freezes (i.e., device no longer responds to the buttons on the screen). There are three ways to

Performing a Warm Boot

A warm boot allows your device to get a fresh start, similar to rebooting a computer. This will restart your device and adjust memory allocation. All records and entries are retained after a warm boot. Unsaved data in open programs may in some cases be lost.

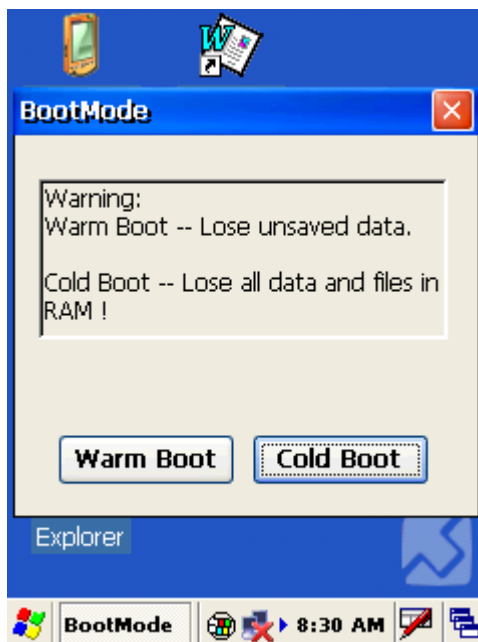
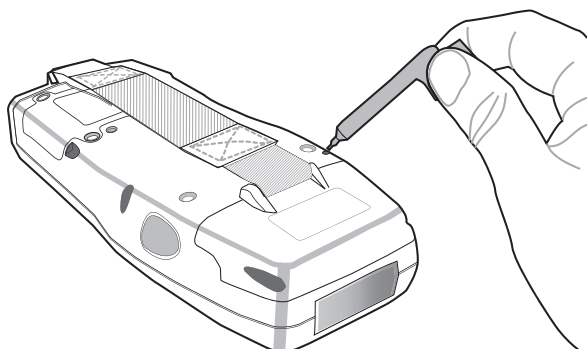
1. Tap **Start** → **Programs** → **Utilities** → **Boot Mode**:



The BootMode screen opens.

2. Tap Warm Boot. The system is reset and you will lose all unsaved data.

Alternatively, to perform a warm boot, lightly press the tip of the stylus to the reset button located on the rear of the PA982.

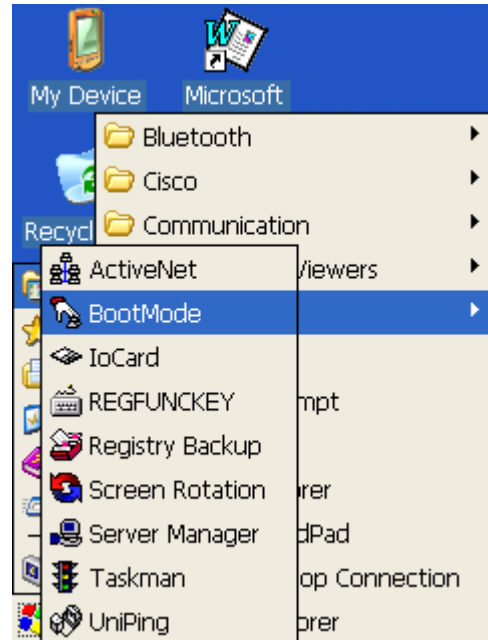


Performing a Cold Boot

A cold boot cuts off power to your device, erasing all records and entries, deleting all programs you have added, and restoring the device to default factory settings.

Never perform a cold boot unless a soft reset does not correct your problem. When you perform your next ActiveSync operation, you can restore any data that you previously synchronized to your computer or you can restore data that you backed up to a storage card.

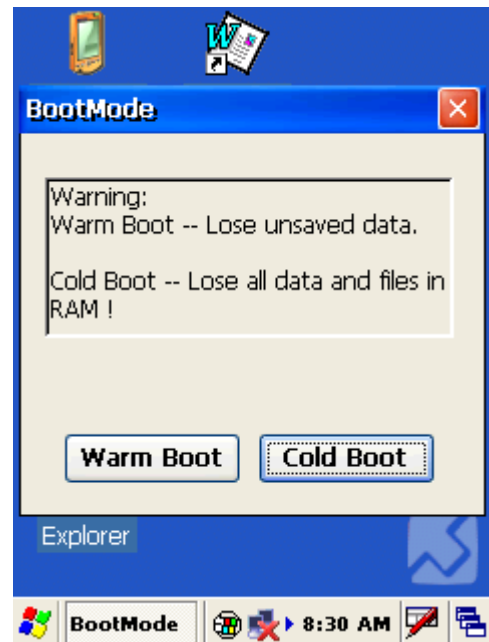
1. Tap **Start** → **Programs** → **Utilities** → **Boot Mode**:



The BootMode screen opens.

2. Tap **Cold Boot**. The system is reset and you will lose all data including all files in the RAM memory.

NOTE: When you perform a hard reset, the date and time settings are not be retained. Formats, preferences, and other settings are restored to their default factory settings.



System Specifications

Processing/Memory	CPU	Intel Xscale PXA255 400Mhz
	Memory	SDRAM:128MB Flash ROM:64MB
OS	Microsoft Windows CE.NET 5.0 Professional Plus	
Keypad	18-Key, including numeric key, alpha key and function key	
Display	240x320 QVGA, Color Transflective TFT with Touch Screen & backlight	
Scanner	Integrated liner barcode scanner Long Range (optional) RFID Reader (optional)	
Indicator	Dual color (red/green) LED	
Communication	USB Host & Client IrDA 1.2(SIR) GPRS (via expansion slot) 802.11b (optional) Bluetooth	
Audio	Speaker	
Expansion Slot	PCMCIA Type II slot	
Power Source	Main	Lithium-Ion @ 7.4V 2080mAh Main battery pack
	Backup	One rechargeable Li-ion backup battery
Enclosure	Weight	700g
	Dimension	Approximately L221.3 X H177.5 X W99.5mm
Environmental	Operating temperature	-30°C~ 50°C
	Storage temperature	-30°C~ 70°C
	Relative Humidity	5% ~ 95%(non-condensing)
	Drop test to Concrete	4 feet
	Environmental Sealing	IP67
Certification	CE, FCC, BSMI, VCCI, RoHS compliant	
Accessories	Desktop Cradle with power jack USB Connector Terminal to PC RS-232 cable (charging and communication) AC/DC power adapter Gun grip handle with internal Li-ion battery	
Software	Microsoft Visual Studio 2005 Microsoft Windows Mobile 5.0 SDK Unitech PA982 SDK VOIP (via 3rd party)	