

HT680 Rugged Handheld Terminal

- HT680 -



User's Manual

400737G Version 1.0

About This Manual

This manual explains how to install, operate and maintain the HT680 Rugged Enterprise Terminal.

No part of this publication may be reproduced or used in any form, or by any electrical or mechanical means, without permission in writing from the manufacturer. This includes electronic or mechanical means, such as photocopying, recording, or information storage and retrieval systems. The material in this manual is subject to change without notice.

© Copyright 2009 Unitech Electronics Co., Ltd. All rights reserved.

Unitech global website address: <http://www.unitech-adc.com>

Bluetooth is a registered trademark of Bluetooth SIG.



Microsoft, Windows and ActiveSync are either registered trademarks or trademarks of Microsoft Corporation. Other product names mentioned in this manual may be trademarks or Registered trademarks of their respective companies and are hereby acknowledged.



Unitech is a member of Oracle Embedded Software Licensing Program.

Regulatory Compliance Statements

FCC Warning Statement

This equipment has been tested and found to comply with the limits for a Class B digital device, pursuant to part 15 of the FCC rules. These limits are designed to provide reasonable protection against harmful interference in a residential installation. This equipment generates, uses and can radiate radio frequency energy and, if not installed and used in accordance with the instructions, may cause harmful interference to radio communications. However, there is no guarantee that interference will not occur in a particular installation. If this equipment does cause harmful interference to radio or television reception, which can be determined by turning the equipment off and on, the user is encouraged to try to correct the interference by one or more of the following measures:

- Reorient or relocate the receiving antenna.
 - Increase the separation between the equipment and receiver.
 - Connect the equipment into an outlet on a circuit different from that to which the receiver is connected.
 - Consult the dealer or an experienced radio/TV technician for help.
1. This Transmitter must not be co-located or operating in conjunction with any other antenna or transmitter.
 2. This equipment complies with FCC RF radiation exposure limits set forth for an uncontrolled environment. To maintain compliance with FCC RF exposure compliance requirements, avoid direct contact to the transmitting antenna during transmitting.
 3. Any changes or modifications (including the antennas) made to this device that are not expressly approved by the manufacturer may void the user's authority to operate the equipment.

FCC Label Statement

This device complies with part 15 of the FCC rules. Operation is subject to the following two conditions:

1. This device may not cause harmful interference, and
2. This device must accept any interference received, including interference that may cause undesired operation.

Canadian Compliance Statement

This Class B Digital apparatus meets all requirements of the Canadian Interference-Causing Equipment Regulations.

Cet appareil numérique de la classe B respecte les exigences du Règlement sur le matériel brouilleur du Canada.

European Conformity Statement

Declaration of Conformity with Regard to the R&TTE 1999/5/EC and EMC 89/336/ EEC directives.

RoHS Statement



This device conforms to RoHS (Reduction Of Hazardous Sub-stances) European Union regulations that set maximum concentration limits on hazardous materials used in electrical and electronic equipment.

TaiwanNCC Warning Statement

交通部電信總局低功率電波輻射性電機管理辦法 (930322)

根據交通部低功率管理辦法規定：

第十二條 經型式認證合格之低功率射頻電機，非經許可，公司、商號或使用者均不得擅自變更頻率、加大功率或變更原設計之特性及功能。

第十四條 低功率射頻電機之使用不得影響飛航安全及干擾合法通信；經發現有干擾現象時，應立即停用，並改善至無干擾時方得繼續使用。前項合法通信，指依電信法規定作業之無線電通信。

低功率射頻電機須忍受合法通信或工業、科學及醫療用電波輻射性電機設備之干擾。

SAR標準值2.0W/Kg；送測產品實測值為：0.268W/Kg

減少電磁波，請妥適使用

RF Radiation Exposure Statement:

For body worn operation, this phone has been tested and meets FCC RF exposure guidelines when used with an accessory that contains no metal and that positions the handset a minimum of 1.5 cm from the body. Use of other accessories may not ensure compliance with FCC RF exposure guidelines.

Laser Information

The Unitech HT680 series is certified in the U.S. to conform to the requirements of DHHS/CDRH 21CFR Subchapter J and to the requirements of IEC 825-1. Class II and Class 2 products are not considered to be hazardous. The HT680 series contains internally a Visible Laser Diode (VLD) whose emissions do not exceed the maximum limits as set forth in the above regulations. The scanner is designed so that there is no human access to harmful laser light during normal operation, user maintenance or during prescribed service operations.

The laser safety warning label required by the DHHS/IEC for the HT680 series' optional laser scanner module is located on the memory compartment cover, on the back of the unit.

CAUTION! Use of controls or adjustments or performance of procedures other than those specified herein may result in hazardous laser light. Use of optical instruments with the scanner will increase eye hazard. Optical instruments include binoculars, microscopes, and magnifying glasses. This does not include eyeglasses worn by the user.

Battery Notices

The HT680 is equipped with a Lithium-Ion battery pack and backup battery. Both batteries will discharge after an extended period of not being used.

When both batteries are discharged, recharge the unit for 16 hours in order to fully charge the main battery and backup battery. Recharge the HT680 through the following:

1. Plug the USB charging cable to the HT680 and plug the 5V/3A AC-DC adapter to the power jack of the USB charging cable.
2. Place the HT680 into the docking station and plug the 5V/3A AC-DC adapter to the power jack of the docking station.

If the main battery is removed, the backup battery ensures the data on SDRAM is safe for up to 6 hours. To prevent data loss, do not leave the HT680 uncharged with the main battery removed for an extended period. See *First Time to Charge the Main Battery & Backup Battery* on page 9 for more details.

Note: Rechargeable batteries are advised to replace every year or when 500 charge/discharge cycles achieved to guarantee optimal performance. It is normal that the battery balloons or expands beyond one year or the maximum of 500 cycles. Although it does not cause harm, it cannot be used again and must be disposed of according to the location's safe battery disposal procedures.

If the performance decrease is greater than 20% in a Lithium-Ion battery, the battery is at the end of its life cycle. Do not continue to use, and ensure the battery is disposed of properly.

The length of time that a battery power lasts depends on the battery type and how the device is used. Conserve the battery life through the following:

- Avoid frequent full discharges because this places additional strain on the battery. Several partial discharges with frequent recharges are better than a deep one. Recharging a partially charged lithium-Ion battery does not cause harm because there is no memory.
- Keep the lithium-Ion battery cool. Avoid a hot car. For prolonged storage, keep the battery at a 40% charge level.
- Do not leave the lithium-Ion battery discharged and unused for an extended period because the battery will wear out and the longevity of the battery will be at least shorter than half of the one with frequent recharges.

Battery charge notice

It is important to consider the environment temperature whenever the Lithium-Ion battery pack is charged. Charging is most efficient at normal room temperature or in a slightly cooler environment. It is essential that batteries are charged within the stated range of 10°C to 45°C. Charging batteries outside of the specified range could damage the batteries and shorten their charging life cycle.

CAUTION! Do not charge batteries at a temperature lower than 0°C, which will increase the internal resistance to cause heat and make the batteries unstable and unsafe. Please use a battery temperature detecting device for a charger to ensure a safe charging temperature range. Further, to protect and avoid battery from

inflating, the battery is detected for thermal protection and will not be charged when the temperature of battery is over 50 degrees.

Storage and safety notice

Although charged Lithium-Ion batteries may be left unused for several months, their capacity may be depleted due to build up of internal resistance. If this happens they will require recharging prior to use. Lithium-Ion batteries may be stored at temperatures between -20°C to 60°C, however they may deplete more rapidly at the higher temperature ranges. It is recommended to store batteries within normal room temperature ranges.

Warranty

The following items covered under Unitech Limited Warranty are free from defects during normal use:

- HT680 – 1-year limited warranty.
- Lithium-Ion battery – 6-month limited warranty.

Warranty becomes void if equipment is modified, improperly installed or used, damaged by accident or neglect, or if any parts are improperly installed or replaced by the user.

Use only the adapter supplied. Using the wrong adapter may damage the unit and will void the warranty.

Table of Contents

Preface	i
About This Manual	i
Regulatory Compliance Statements	ii
FCC Warning Statement	ii
FCC Label Statement	ii
Canadian Compliance Statement	iii
European Conformity Statement	iii
RoHS Statement	iii
TaiwanNCC Warning Statement	iii
Laser Information	iv
Battery Notices	iv
Battery charge notice	v
Storage and safety notice	vi
Warranty	vi
Table of Contents	vii
 Chapter 1	
Getting Started	1
Introducing the HT680	1
Support	1
Notice	2
Warranty	2
Regulatory	2
HT680 Model Specification	3
HT680 Accessories	4
Communication and Charging Cradle	4
Communication and Charging Cable Kits	4
Universal Adaptor	4
Holster	4
Hand Strap & Stylus	4
Li-ion Battery Pack	4
HT680 Product Introduction & Accessory Kit	5
HT680 Front View	6

HT680 Rear View	7
First Steps with HT680.....	8
Install the Battery Pack.....	8
Switch On Backup Battery	8
Supply Power to the HT680.....	9
First Time to Charge the Main Battery & Backup Battery.....	9
Protective Screen Film.....	9
First Time Use of the HT680.....	9
Setting the Time Zone First.....	11
Setting Date/Time	11

Chapter 2

Using the Keypad and Scanner	13
Keypad.....	13
HT680 HotKey	14
Software Keyboard (Windows CE Keyboard)	14
Opening the Windows CE Keyboard	14
Other Character Support from WinCE Keyboard.....	15
Bar Code Scanner	15

Chapter 3

Power system	17
Charging the Lithium-Ion Battery Pack	17
Charging the Main and Backup Battery for the First Time	17
Environment Consideration for Charging.....	18
Power Status Indication	18
“Backup Battery Low” Icon.....	18
Charging the Lithium-Ion Battery Pack	19
Storage and Safety Precautions	19
Backlight Setting	20
Warm Boot / Cold Boot	20
Warm Boot.....	20
Warm Boot via Software	21
Warm Boot via Hardware.....	21
Cold Boot.....	21
Cold Boot via Software	22

Chapter 4	
Data Communication	23
Introduction	23
Connecting.....	23
Serial or USB Cable.....	23
Docking Station.....	24
RF Communication	24
Using ActiveSync	24
Installation.....	25
Using the Mobile Devices Window.....	28
Changing Communications Settings	28
Wireless Communication	29
Bluetooth Setup	29
Bluetooth ActiveSync	30
Chapter 5	
Useful Utilities	33
Introduction	33
Scanner Setting	33
Scan2Key	33
Registry Backup/Restore	34
UniPing	34

Getting Started

Introducing the HT680

The HT680 is a rugged, compact and ergonomic handheld terminal powered by the WinCE. NET OS to enhance your work more efficient and profitable. It incorporates an integral barcode scanning 1D laser/ 2D imager device, color LCD with touch screen, keypad, BT and wireless communication interface capability. It provides the user with a standard Windows-based environment for customization and operation.



The following HT680 Product Reference Guide provides simple step-by-step procedures to give you hands-on experience with your HT680. For programming your HT680, please refer to our SKD and programming manual.

Support

Unitech has a professional support team to quickly answer your questions or any technical related issues. Should an equipment problem occur, please contact the Unitech regional service representatives nearest to you, listed below. Please go to their listed websites for complete contact information.

UTC (China) <http://www.ute.com.cn>

APAC (Taipei, Taiwan) <http://www.unitech-adc.com>

UTJ (Japan) <http://www.unitech-japan.co.jp>

UTA (USA, Canada, Latin America) <http://www.ute.com>

UTI (Europe) <http://www.unitech-europe.nl>

Notice

1. This unit is equipped with a battery pack and backup battery. It is possible that the Unitech HT680 may not be powered ON due to battery discharge as a result of storage. In the above situation and the first-time use, plug the HT680 to the charging cable or charging cradle (with 5V/2A AC-DC adapter), and charge the unused unit for over 16 hours in order to fully charge its backup battery as well.
2. Under normal condition, the back-up battery will be charged from external power or the main battery (if the main battery still has enough power to turn on). If it is charged for the first time, the back-up battery will be fully charged while main battery is charged fully.

Warranty

Unitech's Limited Warranty provides for different warranty periods for different parts and accessories:

- Terminal is covered by one-year limit warranty.
- Docking Station is covered by one-year limit warranty.
- Cable is covered by one-year limit warranty.
- Battery is covered by three-month warranty.

Regulatory

Compliance with VCCI, CE, FCC, BSMI, UL, CCC

HT680 Model Specification

Rugged/Environment	Drop	1.5M
	IP Rating	IP 54
	Operation Temp.	-10°C to 50°C
	Storage Temp.	-20°C to 70°C (W/O Battery)
	Humidity	5%~95% non-condensing
	ESD	Contact ± 8KV, Air ± 12KV
Keypads	Full Alphanumeric	12 keys
Physical	Weight (g)	280g ± 10g (W/O Battery)
	Dimension (LxWxH mm)	169 x 55 x 30
Power supply & Management	Main Battery Type	3.7V / 2200mAH Li-ion, 8.14WH
	Battery Recharging Time	Under 4 hrs.
	Battery Life	BT → Up to 12 hours WLAN → around 8 hours GPRS → 6hours
	Backup Battery Type	70mAH Li-polymer
Display	2.7" Color TFT LCD with v Touch Panel	
	Display pixels	240x320 pixel
Docking Station	USB/Ethernet, Four-Bay Multi. Charger	
Barcode Scanner Reader	1D Laser & 2D Imager	
System Architecture	CPU Processor	PXA270 - 520MHz
	Operating System	WinCE 5.0 Pro.
	Flash ROM	512MB
	SDRAM	128MB
Speaker	v	
Communication Interface	USB Client / USB Host	
Expansion Memory Slot	miniSD Slot	v

Radio Options	802.11b/g / GPRS / GPRS	v
	EDGE	
	Bluetooth	v

Remark: V= Contain ; X= Not Contain

HT680 Accessories

Each of the following items is sold separately to enhance your HT680 terminal's capabilities.

Communication and Charging Cradle

USB Cradle is for data transmission and charging purpose. Modem Cradle is for data transmission via phone line and charging purpose.

Communication and Charging Cable Kits

An included USB cable or an optional serial cable connects the HT680 terminal directly to a peripheral device for communication and a power source for charging.

Universal Adaptor

This power supplier adaptor plugs the terminal directly into a switch to power the terminal and charge the battery pack. This accessory converts the 120~240 Volts for different countries use.

Holster

The holster holds the terminal for mobile use.



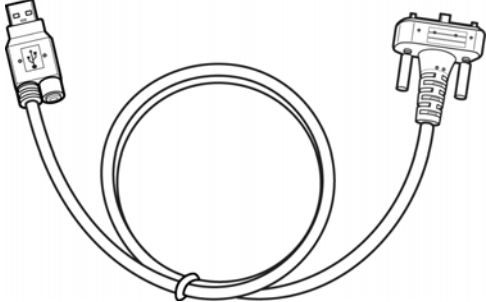
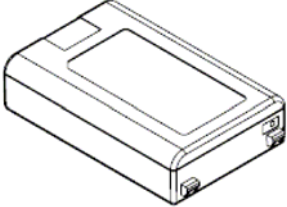
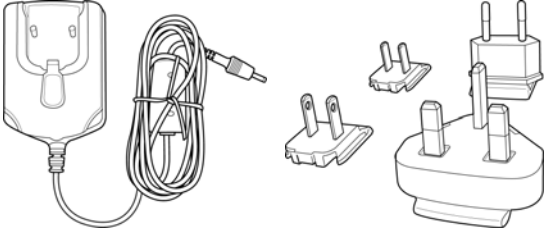

Hand Strap & Stylus

The hand strap is convenient for carrying your HT680 and also includes a stylus attachment.

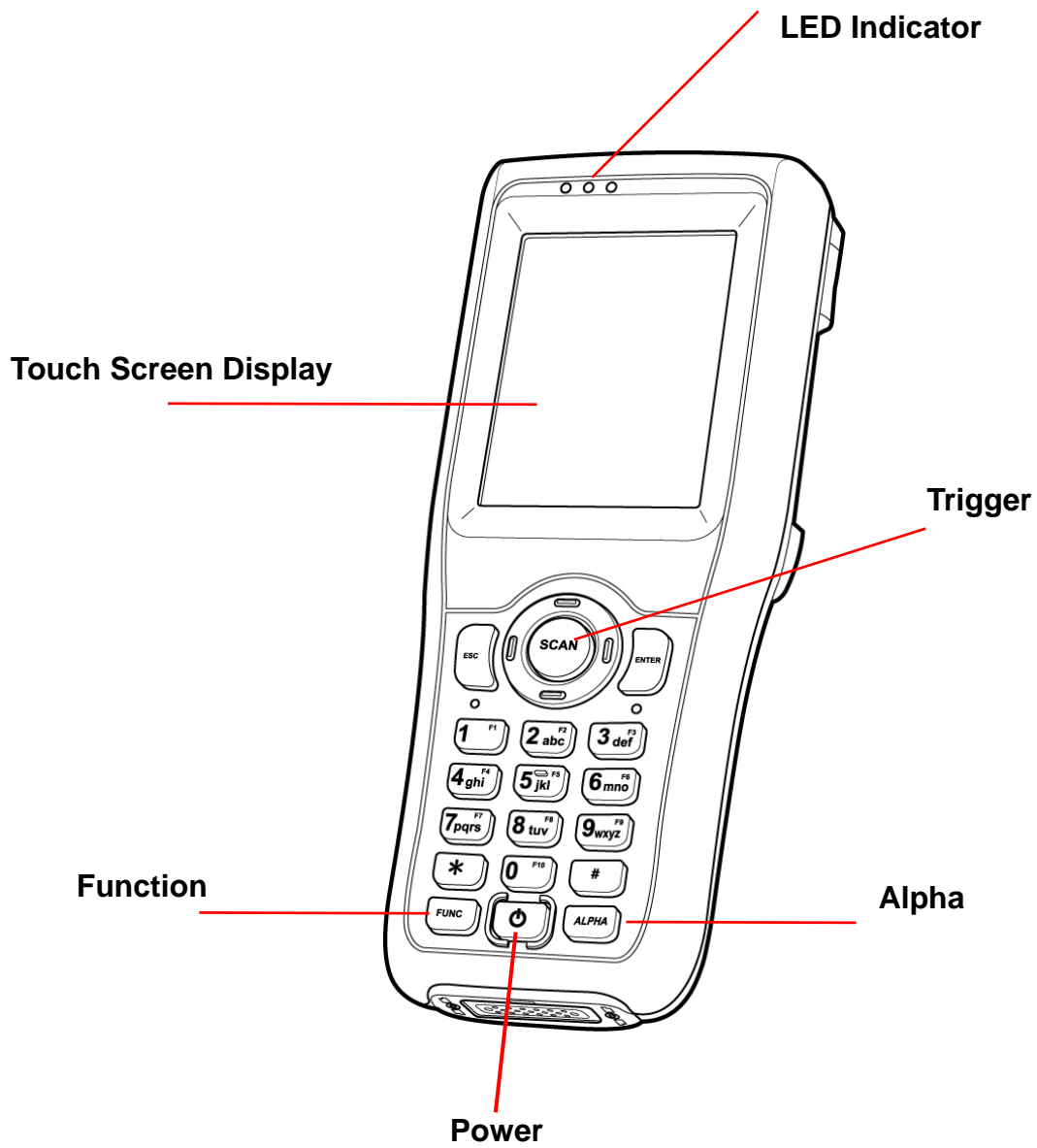
Li-ion Battery Pack

The 3.7v, 1950mAh Li-ion rechargeable battery pack provides the main power supply for HT680 terminal.

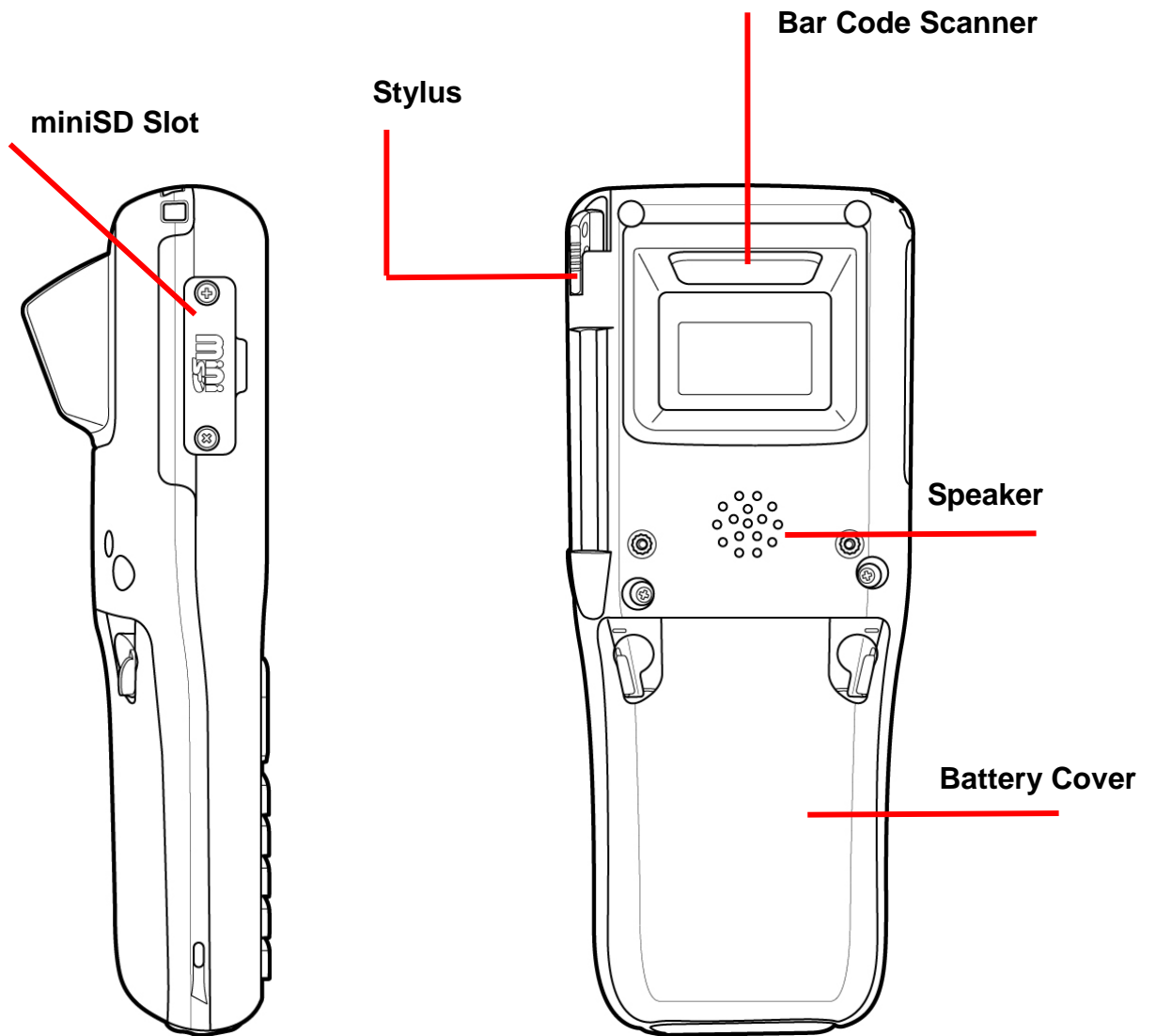
HT680 Product Introduction & Accessory Kit

	
<p>HT680 Terminal</p>	<p>Manual CD</p>
	
<p>Communication Cable</p>	<p>Battery</p>
	
<p>Adaptor</p>	<p>Communication Cradle</p>

HT680 Front View



HT680 Rear View



First Steps with HT680

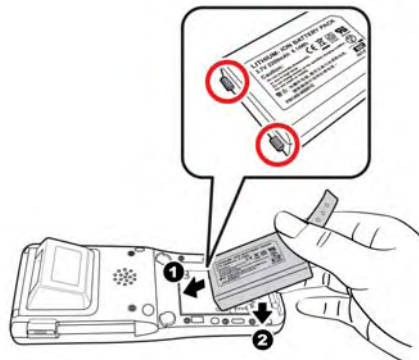
Before first using the HT680, please ensure the battery is fully charged. There are three ways to charge your HT680:

- Docking Station
- USB/Charging cable
- Rechargeable Lithium-Ion battery pack

NOTE: Data loss may occur if the HT680's backup battery is not adequately charged. Before charging the main battery, make sure the backup battery switch is ON.

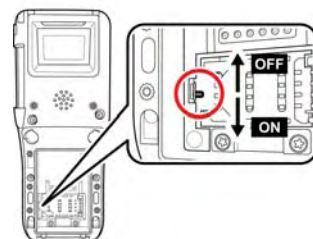
Install the Battery Pack

1. Remove the battery door.
2. Move the backup battery switch to the ON position (see the description below).
3. Insert the battery pack so that the contacts on the battery pack line up with the contacts in the battery compartment. Fully seat the battery.



Switch On Backup Battery

Locate the backup battery switch inside the battery compartment on the left-hand side. Please ensure that it is in the "ON" position before charging the main battery.



Supply Power to the HT680

Connect the USB/Charging Cable to the HT680 and connect the AC adapter to the cable's power jack and an electrical outlet.

Or place the HT680 into the Docking Station (first connect the power supply to the Docking Station).

First Time to Charge the Main Battery & Backup

Battery

We would like to propose to charge the battery at least up to 16 hours for the first time to use. While it normally only takes about 4 hours to charge the battery after it's been drained, when charging the battery for the first time please allow at least 16 hours. While charging the main battery the backup battery should also be charged. Please make sure the backup battery has been switched "ON" (this cannot be emphasized enough).

CAUTION: There is a high risk of data loss from RAM if the backup battery is not fully charged. This can happen if the main battery has been drained and the unit is not connected to the AC adaptor. For this reason, it is crucial that the backup battery is switched on before charging the main battery for the first time.

Protective Screen Film

To protect screen, the HT680 has been provided with a protective plastic film. You may remove it (if required). The screen will be more susceptible to scratching without the film, but will be more readable.

First Time Use of the HT680

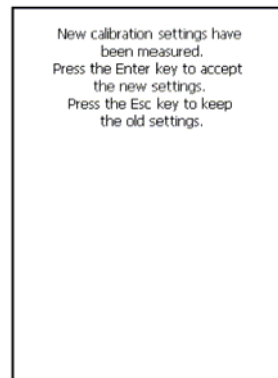
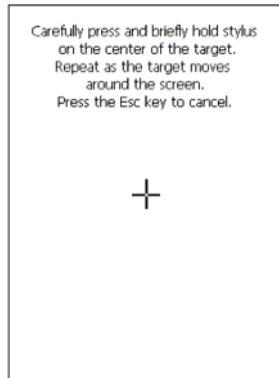
Pressing the Power ON/OFF Key

The Unitech HT680 welcome screen appears. The Windows CE screen will appear shortly thereafter.

Align the Screen

When prompted, use the stylus to tap the targets as they appear in order to align the touch screen.

When you complete the procedure, press any key or press anywhere on the touch screen to start up the WinCE system.



Adjusting Screen Brightness

To adjust the original default setting of the screen brightness, the backlight setting will be required. Please refer to page 20 for the new setting procedure.

Setting Time Zone/ Date

Before using the HT680 please take a few minutes to set the time and date so that data can be properly time-stamped.

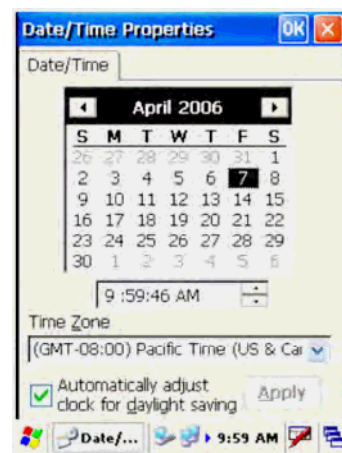


Setting the Time Zone First

Follow the steps below to set up your time zone.

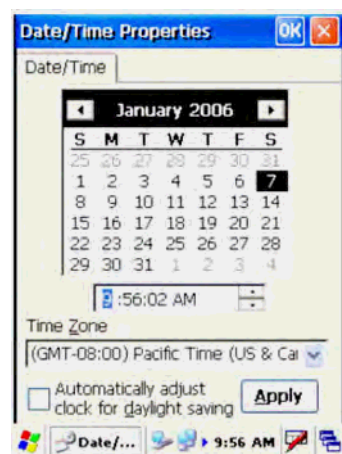
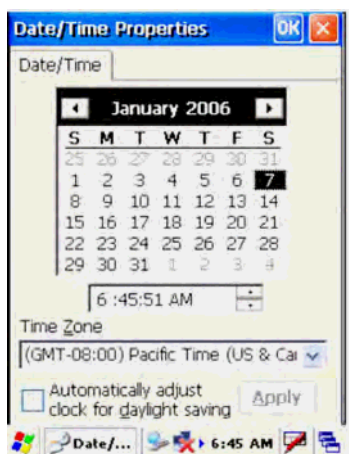
1. Tap the location arrow to see a list of cities.
2. Choose your location (or nearest listed one).
3. Select the Daylight Savings Time check box, if necessary.
4. Tap the Apply button.

If you would like the terminal automatically adjust clock for daylight saving, please tick on it.



Setting Date/Time

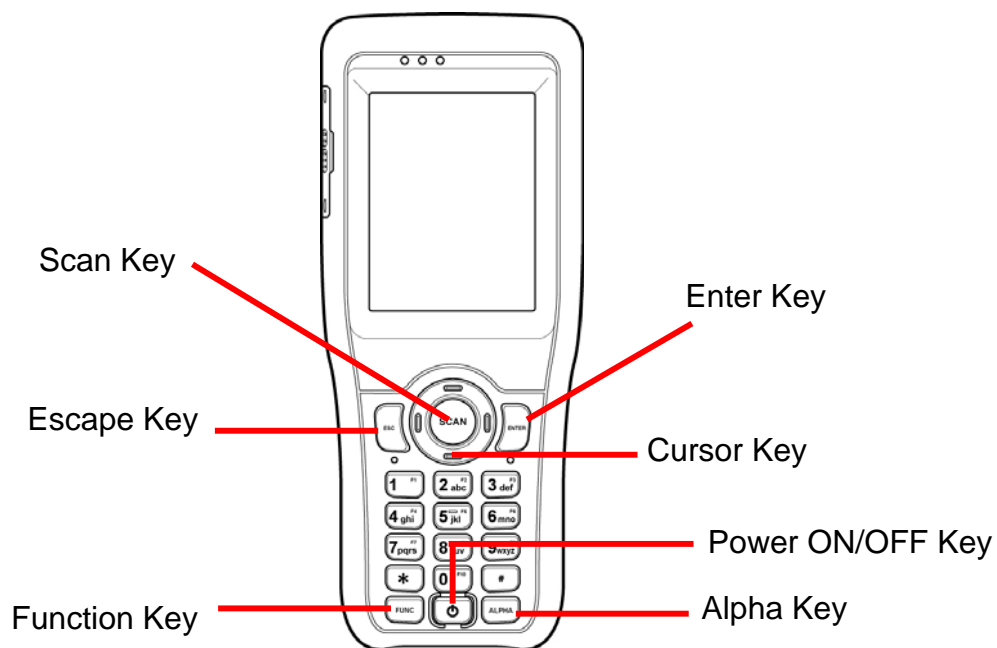
Tap the Left or Right arrows to scroll the year and month you desire. Or, directly tap location of year or month to change the year or month setting. To set up time, tap on the Hr/Min/Sec AM/PM to input the Hr/Min/Sec



Using the Keypad and Scanner

Keypad

Data can be entered into the HT680 via its keypads, which includes: 0~9, alpha, function, escape, enter, scanner trigger, cursor, and on/off keys.



[ENT] The Enter key confirms data entry.

[FUNC] The Function Key is used in conjunction with specific number keys to operate as Hotkeys (see next page).

[ESC] The escape key returns the user to a previous page.

[Cursor] The cursor key moves the cursor around the screen.

[Alpha] The Alpha key toggles Alpha mode on and off and Caps mode on and off. One press of the Alpha key causes the HT680's keys to input alpha characters, indicated by a blue LED light. A second press causes the input of upper-case characters, indicated now by a green LED. A third press returns the HT680 to numerical input.

HT680 HotKey

The HT680 provides hotkeys for frequently used functions. Press the Function key and the appropriate numeric key for the following functions listed below:

Func 6 = Task Manager

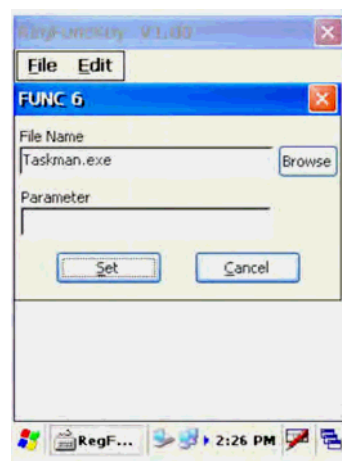
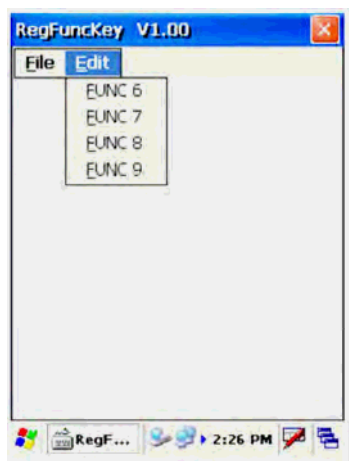
Func 7 = Scanner Setting

Func 8 = Power Properties

Func 9 = System Info

Hotkeys can be modified to suit the user's preferences. To modify hotkeys, please follow the path below:

Path: My computer/Windows/RegFuncKey.exe

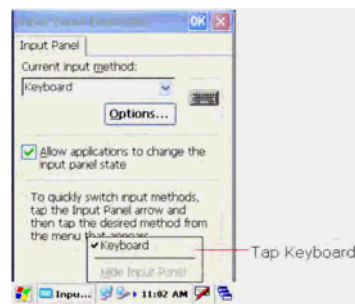


Software Keyboard (Windows CE Keyboard)

Besides its hardware keypad, the HT680 provides a touchscreen keyboard as an alternative method of character input. This software keyboard replicates the layout of a standard PC keyboard.

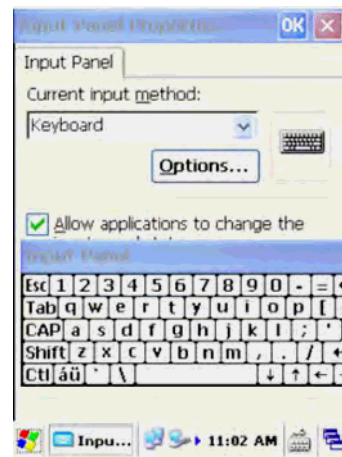
Opening the Windows CE Keyboard

The Windows CE keyboard can be opened by tapping the "keyboard" icon on the task bar. (Refer to picture).



Other Character Support from WinCE Keyboard

In addition to standard keyboard input, the HT680 supports special European character and symbol input. To enter these characters, tap the [áü] key on the touch screen keyboard to display the available characters.



Bar Code Scanner

The HT680 has an integrated 1D laser and 2D imager bar code scanner (depending on model number) capable of reading all major bar code labels.

Power system

Charging the Lithium-Ion Battery Pack

The HT680's batteries can be charged via the USB or serial communication cable, or via the optional docking station - both using the included AC adaptor. Please charge the battery for at least 4 hours per session to ensure a full charge. Please note that the first time charge should be for at least 16 hours (see the description below).

Charging the Main and Backup Battery for the

First Time

Note: When first charging the HT680, please allow at least 16 hours to fully charge both the main and backup batteries. When the HT680 arrives from the factory the backup battery switch is in the OFF position in order to protect the backup battery. Before first charging the HT680, make sure the backup battery switch is moved to the ON position. The backup battery switch can be found inside the main battery compartment. Data loss can occur if the backup battery is not adequately charged - therefore it is imperative to ensure that the backup battery switch is in the ON position before charging for the first time.

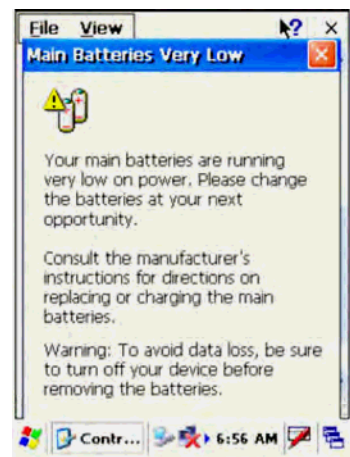
Note: A properly charged backup battery can store data for up to 72 hours without power from the main battery. This is not recommended. Please make sure an adequately charged main battery or AC power is presented and try not to rely on the backup battery for other than unusual or emergency situations. To prevent data loss due to backup battery failure (always a slim possibility), please minimize the amount of time that the backup battery has to operate without the main battery pack installed or while disconnected from AC power.

Environment Consideration for Charging

It is important to consider the environment temperature whenever you are charging the Lithium-Ion battery pack. The process is most efficient at normal room temperature or slightly cooler. It is essential that you charge batteries within the stated range of -5°C to 50°C. Charging batteries outside of the specified range could damage the batteries and shorten their charging life cycle.

Power Status Indication

When the "Main Batteries Very Low" icon appears, charging the main battery pack as soon as possible is highly recommended in order to avoid system shutdown at an awkward moment.



“Backup Battery Low” Icon

When the "Backup Battery Low" icon appears it indicates that the backup battery is low and needs to be charged.

Charging the Lithium-Ion Battery Pack

Automatic shutdown of the HT680

The HT680 will enter idle mode when there is no task, or all tasks are waiting for input. In default setting, the HT680 will automatically turn itself off if it remains idle for 3 minutes and when there is no external charging power applied. Pressing the power button will return the HT680 to the same point at the time of automatic shutdown.

Note

Suggestion 1: Turn off wireless mode if you are not using it. This will conserve battery power.

Suggestion 2: Disable the I/O card if Internet access is not required.



Storage and Safety Precautions

Batteries should be stored in an open environment and placed where there is no risk of accidental shorting or other damage. Although charged Li-Ion batteries may be left unused for several months, their capacity may be reduced due to back up and internal resistance. If this happens they will require recharging prior to use. Li-Ion batteries may be stored at temperatures between -4°F and 158°F (-20°C to 70°C).

Backlight Setting

The backlight for color display is user-defined. There are two tabs – one for Battery Power and the other for External Power.

Field	Description
Dim Backlight if	Select how many minutes you want to elapse before the backlight dims.
Turn Off Backlight if	Select how many minutes you want to elapse before the backlight automatically turns off.
Turn on Backlight	Select this option if you want the backlight to turn on when the button is pressed or the touch screen is tapped.



Warm Boot / Cold Boot

Warm Boot

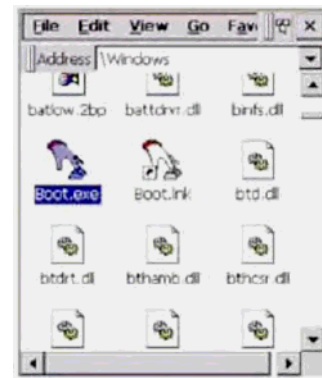
Warm Boot is a reset to re-boot the HT680 without losing saved data. Perform a warm boot when:

- The terminal fails to respond.
- After installing some software applications
- After making changes to certain system settings, such as network cards

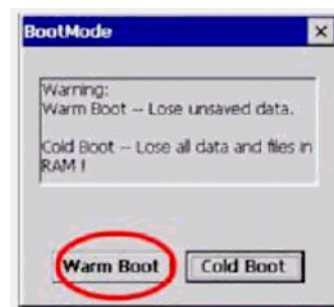
WARNING - Performing a Warm Boot will result in the loss of all unsaved data!

Warm Boot via Software

To perform a Warm Boot via software, locate the file Windows/Boot.exe.

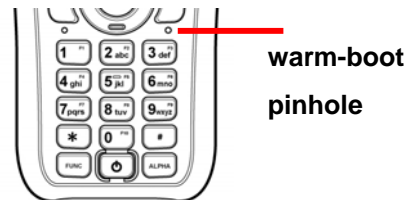


Tap "Warm Boot". The system will be warm started.



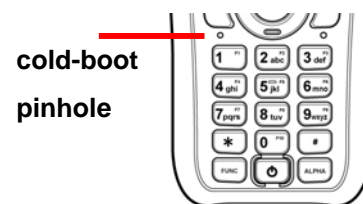
Warm Boot via Hardware

Use a blunt pin (like an unfolded paper clip) to stab the warm-boot pinhole located on the front of the HT680, above the keypad.



Cold Boot

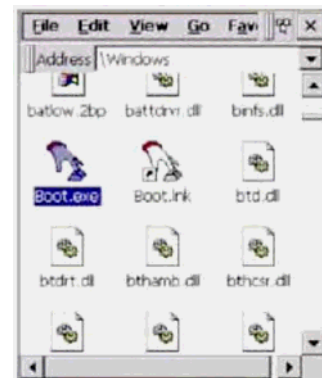
A Cold Boot is used to reset the operating system, restore the terminal back to factory default, and reset the terminal after a bootloader, keyboard, or kernel upgrade. You are also allowed to stab the cold-boot pinhole to cold boot the HT680.



WARNING - Performing a Cold Boot will return the HT680 to its original factory settings!

Cold Boot via Software

To perform a Cold Boot via software, locate the file Windows/Boot.exe.



Tap “Cold Boot”. The system will be re-started and reset back to factory default. You will need to recalibrate the screen and reset the date and time.



Cold Boot via Hardware

1. Remove the Main Battery.
2. Switch OFF the Backup Battery.
3. Switch the Backup Battery back ON.
4. Insert the Main Battery.
5. The terminal will be cold started and reset back to factory default.
6. Recalibrate the screen and reset the date and time.

Data Communication

Introduction

The Unitech HT 660 allows users to link to a host computer via RS-232 / USB, Bluetooth, or Wireless connection for data communication.

This chapter provides an overview of the communication of the HT680. The following subchapters cover these topics:

- “Series or USB or Modem” communication via cable or docking station
- “RF Communication” for details about wireless communication between the HT680 and host computers
- ” Microsoft ActiveSync” for details about serial communication via USB port

Connecting

Serial or USB Cable

Plug the USB end of the HT680 communication cable into your PC's USB port, and the other end into the HT680's communication port. To simultaneously charge the HT680, plug the AC power adaptor into the power receptacle on the USB plug.



Docking Station

USB Cradle

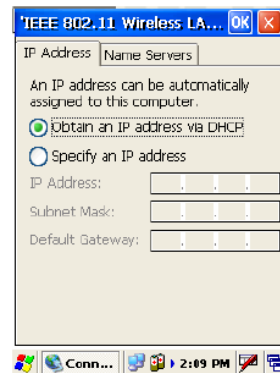
For data transmission, plug one end of your HT680's USB communication cable into your PC's USB Port and the other end into the HT680 Docking Station's USB port. To simultaneously charge the HT680, plug the AC power adaptor into the power receptacle on the Docking Station.



RF Communication

Windows CE can support TCP/IP protocol and the user can link to the Internet via the settings under “ Network and Dial-up Connections”.

In the Network and Dial-up Connections, go to PRISM1 to set up the IP to connect to internet.



Using ActiveSync

Using Microsoft ActiveSync, you can synchronize and transfer information between your desktop computer and terminal. The most current version of ActiveSync can be downloaded from www.microsoft.com.

Additional Capabilities

With ActiveSync, you can also:

- Back up and restore your device data.
- Copy (rather than synchronize) files between your device and desktop computer.
- Control when synchronization occurs by selecting a synchronization mode. For example, you can synchronize continually while connected to your desktop computer or only when you choose the synchronize command.
- Select which information types are synchronized and control how much data is synchronized. For example, you can choose how many weeks of past appointments you want synchronized.

Before beginning installation, carefully read the following:

- Because you will be restarting your computer during installation, save your work and quit all programs before you begin.
- To set up your communication settings, the HT680 serial cable is required to connect the HT680 to your host computer.
- If you run the Windows NT® operating system with a service pack, you will be informed during setup that you may need to reinstall the service pack. Try connecting first, and if unsuccessful, reinstall the latest service pack.

Requirements

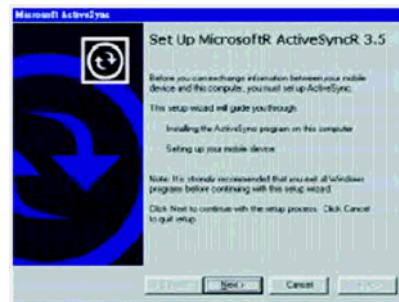
To synchronize, ActiveSync version 3.7 or higher must be installed on both your desktop computer and the HT680 terminal. The HT680 terminal is installed with ActiveSync and shipped. Therefore, you must install ActiveSync 3.7 on your desktop computer.

To install ActiveSync on your desktop computer, please link to Microsoft website to get free download driver.

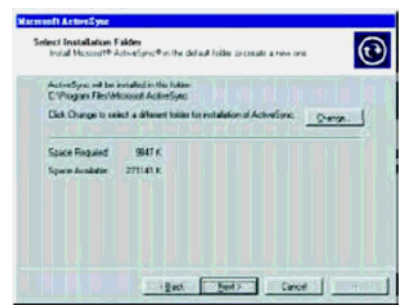
Installation

Follow the installation procedure below to install Microsoft ActiveSync, connect your HT680 to your desktop computer, and establish a partnership for synchronization, if required.

Download the executable program “msasync.exe” from the Microsoft web site at: <http://www.microsoft.com/mobile/pocketpc/downloads/activesync35.asp>. Execute this program.

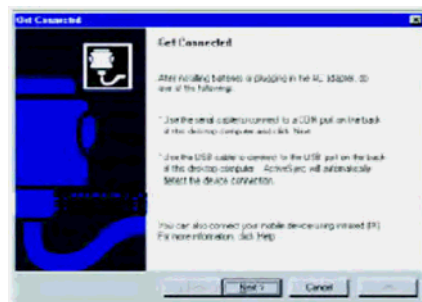


Select the folder into which Microsoft ActiveSync will be installed. If you choose not to download into the displayed default folder, click the Change button.



After you’ve selected the folder, click Next to set up Microsoft ActiveSync. After you’ve installed Microsoft ActiveSync and restarted your computer, you’ll see the screen:

- Using the USB, plug the PA966 into a communication port on your desktop computer.
- Turn the HT680 on. Click the Next button.

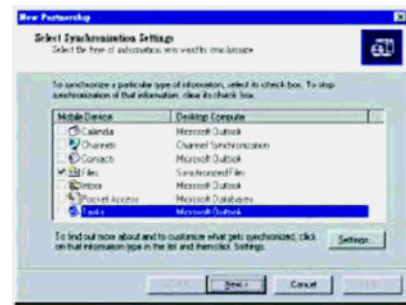


Microsoft ActiveSync should recognize your HT680 and configure your communication port. If a message appears indicating that it is unable to detect a connection, click the Cancel button and manually configure the communication settings.

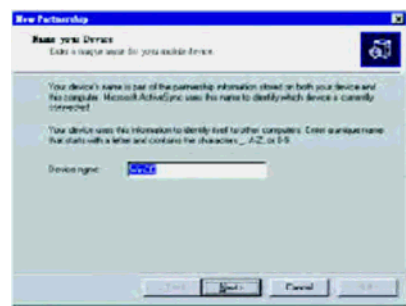
When the HT680 is initially connected to a PC, the following screen appears prompting you to set up a “Partnership”. Setting up a Partnership is required if your HT680 is to be synchronized with other computers and/or terminals. Otherwise select No.



Now select synchronization settings. Currently the HT680 can support “Synchronized Files”.

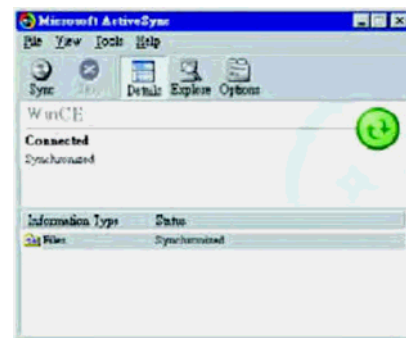


Different HT680 cannot share the same Device Name if more than one terminal is to be connected to the same PC via a “Partnership”. The default Device Name assigned to the HT680 is “WinCE”. It is important to specify a different name for each terminal if more than one terminal is to be connected to the same PC. When ActiveSync displays the following screen, assign each terminal its own unique name.



Click the Next button and follow the instructions to set up a partnership between the HT680 and your desktop computer. This partnership allows you to synchronize information between the two computers.

When the configuration process is complete, you’ll see the screen.

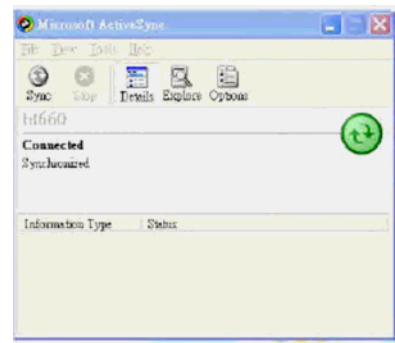


Synchronization will be initialized and will take place if you’ve chosen to synchronize periodically or upon connection.

Note: Your desktop computer can create a partnership with multiple HT680. Also, The HT680 can create a partnership with up to two desktop computers.

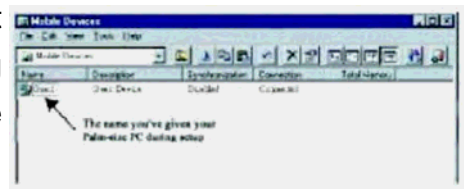
Using the Mobile Devices Window

Start Microsoft ActiveSync by clicking the Microsoft ActiveSync shortcut on your desktop and then clicking the “Explore” icon.



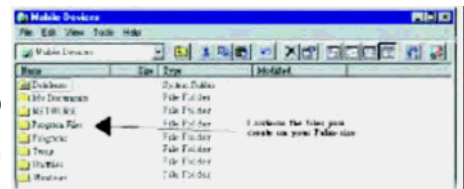
In the displayed window, you can:

Select your HT680 to use Microsoft ActiveSync features such as changing synchronization options, as described in the “Synchronization” section.



Open the Explorer window by double clicking your device icon in the Mobile Devices window.

Use this window, which is the root window to the HT680, to copy and move files between the HT680 and your desktop computer, as described in the “Synchronization” section.



Changing Communications Settings

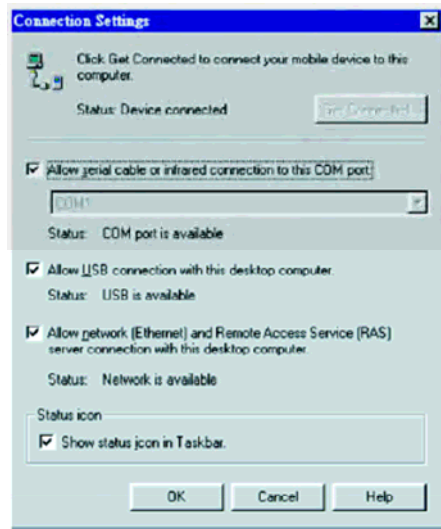
If Microsoft ActiveSync fails to detect the HT680 during installation, set up communications manually instead. Make sure the following conditions are met:

- Verify that the correct communications port is selected for your desktop computer and that it is free.
- Microsoft ActiveSync uses the specified communication ports to connect to the HT680. Make sure these resources are available for Microsoft ActiveSync to connect to the HT680. Other programs cannot use them while the HT680 and your desktop computer are connected.

- Set your baud rate on the HT680 - the desktop computer will match it.

To check communications settings, open the Mobile Devices folder, and click File / Connection Settings. The connection on the HT680 is set to USB connection by default. To adjust the connection, tap Start, Settings, Control Panel, select the Communication icon, and then tap the Change Connection... button.

For more information see Microsoft ActiveSync Help.

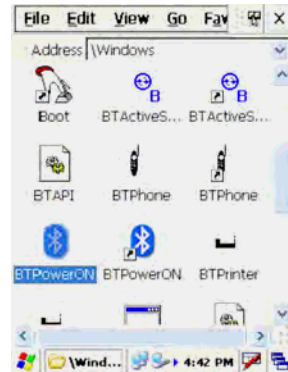


Wireless Communication

Your HT680 is equipped with built-in Bluetooth for wireless communication.

Bluetooth Setup

Select the BTPowerON program from Wireless Connection on your HT680's Startup Bar/ Program/ Bluetooth

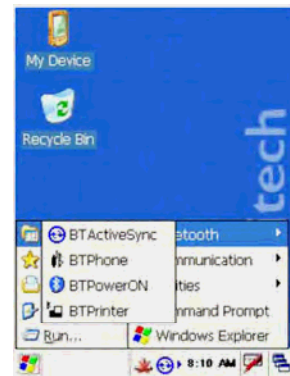


Select Bluetooth Module Power On and tap OK.

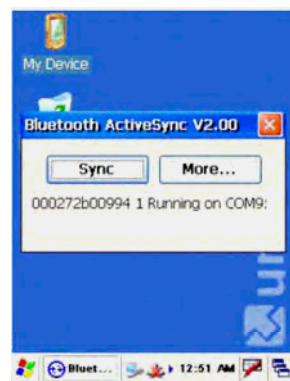


Bluetooth ActiveSync

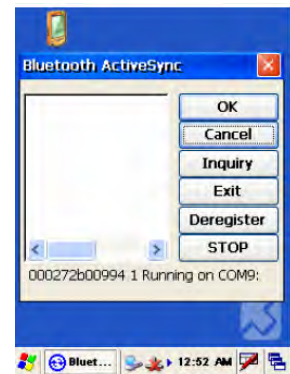
Select BTActiveSync from Communication on the Startup bar.



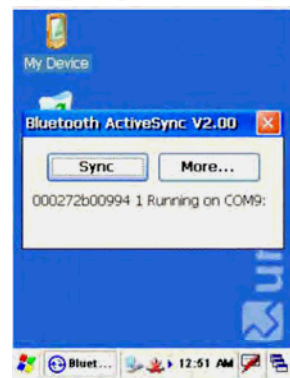
On your PC, tap the Bluetooth icon on the task bar. The screen to the right will appear. Select More...



Choose Inquiry. The inquiry process might take a few seconds. Then select the device to synchronize and tap OK.

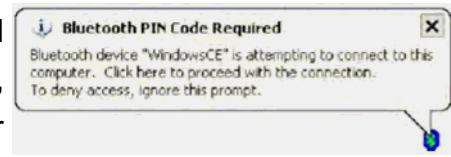


Tap the Bluetooth icon on the task bar again. Click Sync.



The message "Connecting to Bluetooth" will appear on your HT680.

A Bluetooth security screen will appear prompting you to enter a PIN code. This PIN code can be any series of letters and numbers, and must be the same code you enter on your HT680 when prompted.



When prompted by your HT680, enter the same PIN code that you'd entered on your PC. Once this is successfully entered, your synchronization is complete.

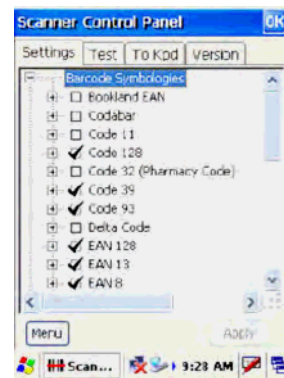
Useful Utilities

Introduction

Unitech has been developing some of useful utilities for user's application. The followings are Unitech Utilities introduction.

Scanner Setting

When it is necessary for the user to change the default barcode symbology for a different application, Scanner Control Panel provides the setting function to change default symbology, place delimiter characters behind scanned data, and save the settings. Run this program from \Start\Setting\Control Panel\Scanner Setting.exe and Scanner Control Panel will be displayed.



Scan2Key

The Scan2Key application can route input from the scanner port to the keyboard buffer, with the result that all scanned data will be treated as if they were input from the keypad. With this router, scanned data can be directly input into generic applications like MS Pocket Word. Scan2Key can be found at: \Start\Setting\Control Panel\Scanner Setting\ To kpd.

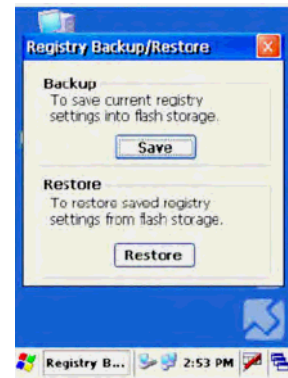


Registry Backup/Restore

The Registry Backup program stores the HT680's registry settings for the user to access. If a cold boot should be required, or the user otherwise wants to return the registry to a previous state, the user can retrieve an earlier setting from Registry Backup.

Registry Restore allows the user to restore the HT680s registry to a previously saved version.

\Start\Program\Utilities\Registry Backup



UniPing

This Unitech program enables the user to ping their IP to determine the status of the connection.

