

7900 MC 75 Terminal



7900 Front and Back Views



7900 Left and Right Side Views





7900 Top and Bottom Views



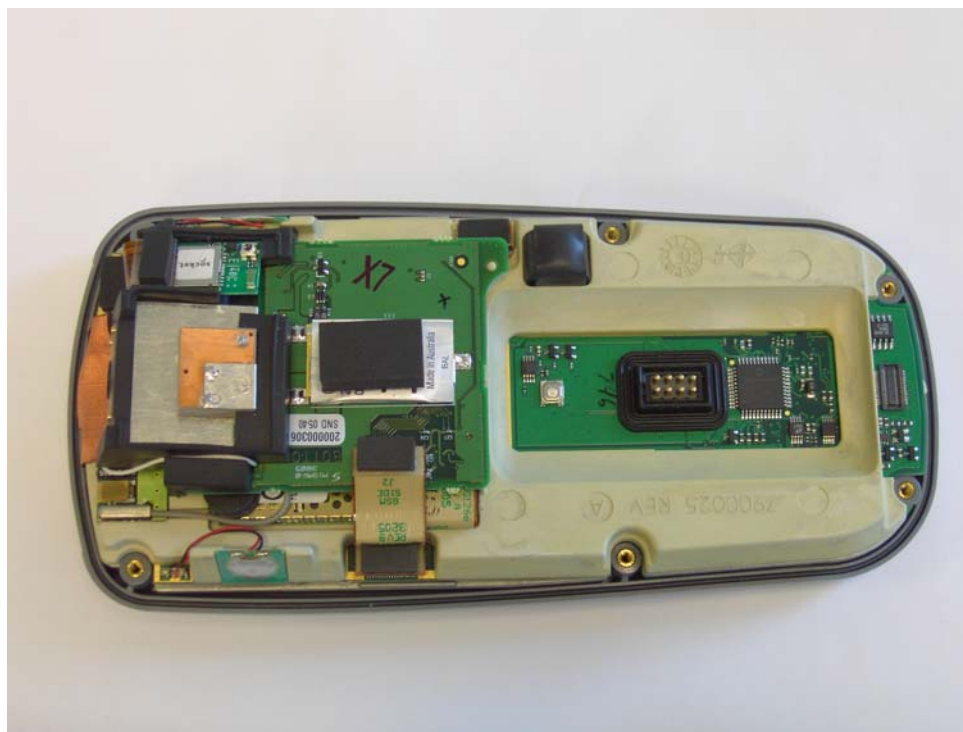


7900 Top and Bottom Open

7900 “LUPE” Unit Configuration
MC75 GSM, 802.11 and Bluetooth Radios Included

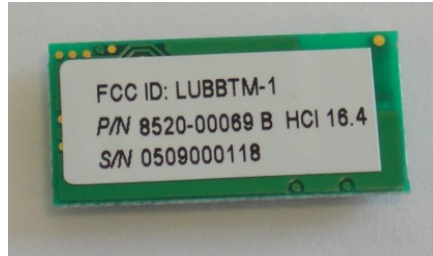
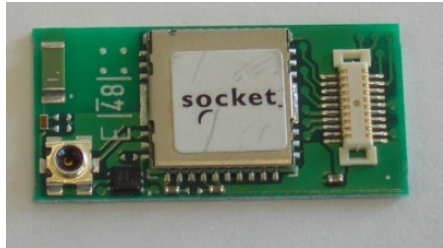


7900 “LUPE” Label Placement



**7900 “LUPE” Radio
Placement Internal**

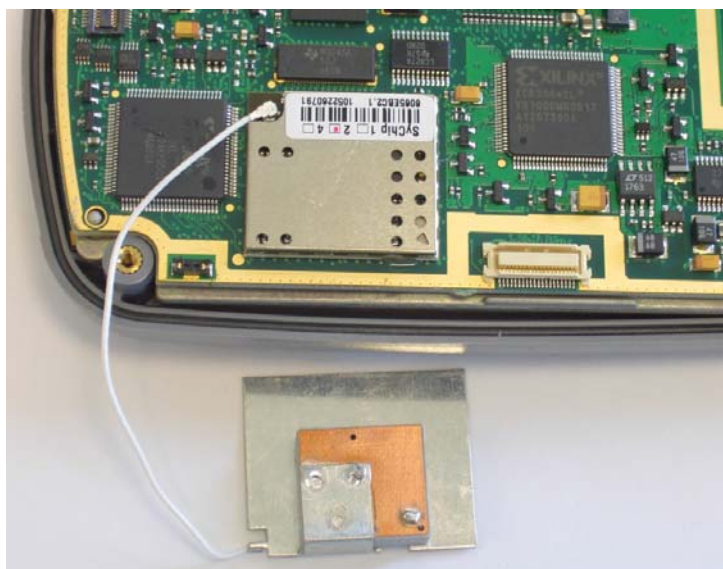
**Front and Back Views of Bluetooth and MC75 GSM
View of 802.11 as Soldered onto Main Board with Antenna Attached**



Bluetooth Radio Front and Back

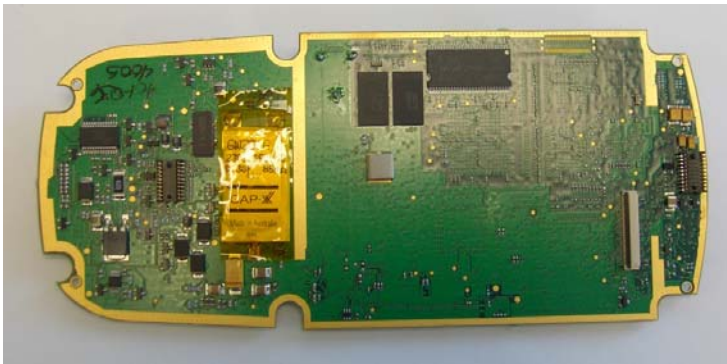


MC75 GSM Radio Front and Back

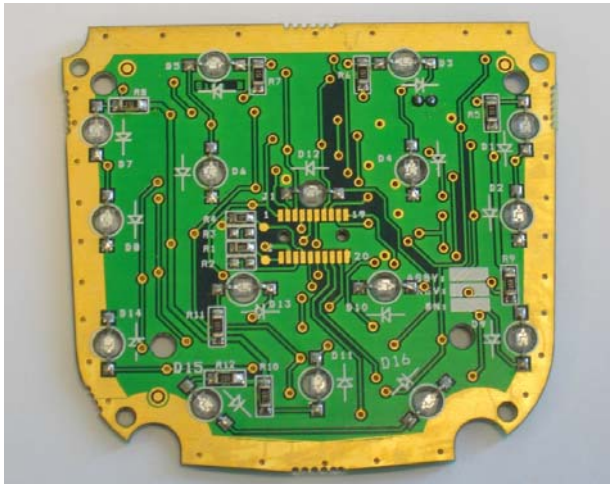
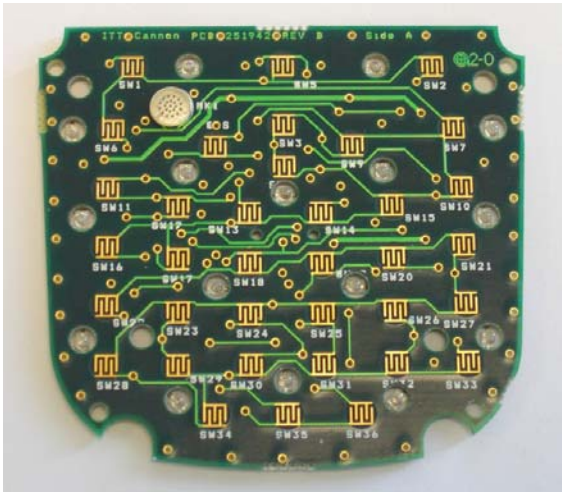


**802.11 Radio as soldered on Main
Board w/ Antenna attached**

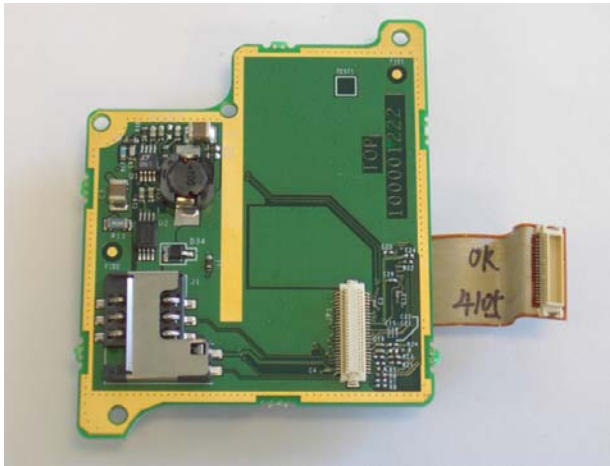
7900 Internal Board Views



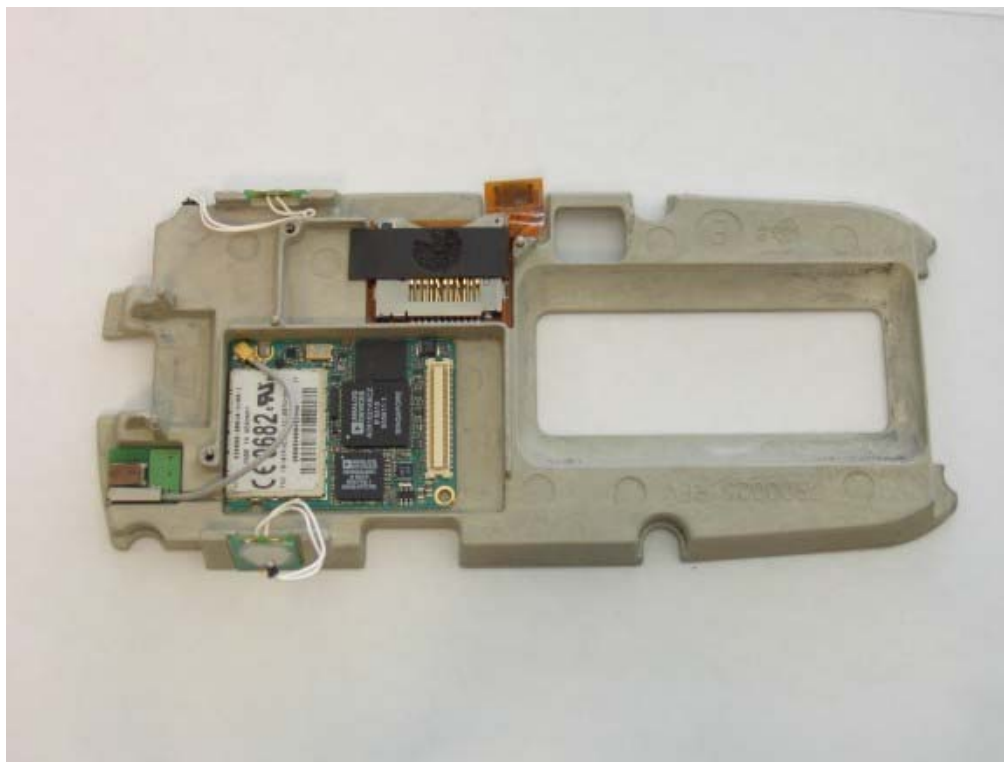
Main Board Front and Back Views



Key Board Front and Back Views



GSM Power Board Front and Back Views



7900 view on and placement of GSM module after removal of GSM Power Board, including antenna