

## Bluetooth Configuration

By default, the MC75A is configured to using the Microsoft Bluetooth stack. Refer to the *MC75A Mobile Computer Integrator Guide*, Appendix B, for information on switching to the StoneStreet One Bluetooth stack.

*Table 6-1* list the services supported by the Microsoft Bluetooth stack and the StoneStreet One Bluetooth stack.

**Table 6-1** *Bluetooth Services*

Microsoft Bluetooth Stack	StoneStreet One Bluetooth Stack
OBEX Object Push Services	OBEX Object Push Services
Hands-Free Audio Gateway Services	Hands-Free Audio Gateway Services
Serial Port Services	Serial Port Services
Personal Area Networking Services	Personal Area Networking Services
PBAP Services	IrMC Services
Dial-Up Networking Services	Dial-Up Networking Services
HID Client Services	HID Client Services
A2DP/AVRCP Services	A2DP/AVRCP Services
	File Transfer Services
	Headset Audio Gateway Services

*Table 6-2* list the COM ports available for the Microsoft Bluetooth stack and the StoneStreet One Bluetooth stack.

**Table 6-2** *COM Ports*

Microsoft Bluetooth Stack	StoneStreet One Bluetooth Stack
COM5	COM5
COM9	COM9
	COM11
	COM21
	COM22
	COM23

## Bluetooth Power States

### Cold Boot

#### *With StoneStreet One Bluetooth Stack*

Performing a cold boot on the MC75A turns off Bluetooth after initialization (which takes a few moments). It is normal to see the **Bluetooth** icon appear and disappear (when using the Classic Home screen), as well as a wait cursor, when initialization proceeds in all modes.

**With Microsoft Bluetooth Stack**

Performing a cold boot retain the state of the Bluetooth radio prior to the cold boot.

**Warm Boot****With StoneStreet One Bluetooth Stack**

Performing a warm boot on the MC75A turns off Bluetooth.

**With Microsoft Bluetooth Stack**

Performing a warm boot retain the state of the Bluetooth radio prior to the warm boot.

**Suspend**

When there is an active Bluetooth connection, the Bluetooth radio goes into low power mode maintaining the active connection. When there is no active connection, the Bluetooth radio turns off.

**With StoneStreet One Bluetooth Stack**

- ✓ **NOTE** If there is an active Bluetooth connection between the MC75A and another Bluetooth device, the MC75A will not timeout. However, if the user presses the Power button on the MC75A, the MC75A will suspend (except when on a call) and upon receiving data from a remote Bluetooth device, the MC75A will wake from suspend mode. For example, headset redial or Bluetooth scanner sending data to the MC75A.

**With Microsoft Bluetooth Stack**

- ✓ **NOTE** If there is an active Bluetooth connection between the MC75A and another Bluetooth device and there is no data activity, the MC75A will timeout. However, if the user presses the Power button on the MC75A, the MC75A will suspend (except when on a call) and upon receiving data from a remote Bluetooth device, the MC75A will wake from suspend mode. For example, headset redial or Bluetooth scanner sending data to the MC75A.

**Resume**

When the MC75A resumes, Bluetooth turns on if it was on prior to suspend.

---

## Using Microsoft Bluetooth Stack

The following sections provide information on using the Microsoft Bluetooth stack.

**Turning the Bluetooth Radio Mode On and Off**

Turn off the Bluetooth radio to save power or if entering an area with radio restrictions (e.g., an airplane). When the radio is off, other Bluetooth devices cannot see or connect to the MC75A. Turn on the Bluetooth radio to exchange information with other Bluetooth devices (within range). Communicate only with Bluetooth radios in close proximity.

- ✓ **NOTE** To achieve the best battery life turn off radios not in use.

**Enabling Bluetooth**

To enable Bluetooth:

1. Tap **Wireless Manager** and then tap the **Bluetooth** bar or  
Tap **Start > Setting > Connections > Bluetooth** icon > **Mode** tab.



**Figure 6-1** Bluetooth Mode Tab

2. Check the **Turn On Bluetooth** checkbox.
3. Tap **OK**.

### Disabling Bluetooth

To disable Bluetooth:

1. Tap **Wireless Manager** and then tap the **Bluetooth** bar or  
Tap **Start > Setting > Connections > Bluetooth** icon > **Mode** tab.
2. Un-check the **Turn On Bluetooth** checkbox.
3. Tap **OK**.

### Discovering Bluetooth Device(s)

The MC75A can receive information from discovered devices without bonding. However, once bonded, the MC75A and a bonded device exchange information automatically when you turn the Bluetooth radio on. See [Bonding with Discovered Device\(s\) on page 6-32](#) for more information.

To find Bluetooth devices in the area:

1. Ensure that Bluetooth is enabled on both devices.
2. Ensure that the Bluetooth device to discover is in discoverable and connectable modes.
3. Ensure that the two devices are within 30 feet (10 meters) of one another.
4. Tap **Start > Settings > Connections** tab > **Bluetooth** icon > **Devices** tab.



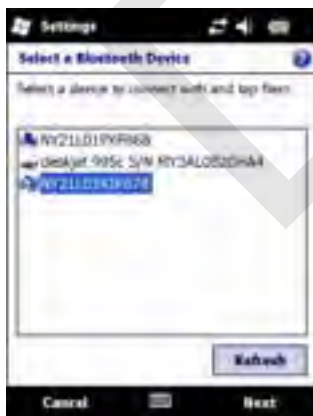
**Figure 6-2** Bluetooth - Devices Tab

5. Tap **Add new device**. The MC75A begins searching for discoverable Bluetooth devices in the area.



**Figure 6-3** Searching for Bluetooth Devices

6. Select a device from the list.



**Figure 6-4** Select a Bluetooth Device

7. Tap **Next**. The **Enter Passcode** window appears.

✓ **NOTE** If Smart-pairing is configured and the device is requesting one of the pre-defined PINs, the **Enter Passcode** window does not appear.



**Figure 6-5** *Enter Passcode*

8. Enter the Passcode on the other device. The device is added to the Bluetooth list.



**Figure 6-6** *Bluetooth Connection Confirmation*

You are prompted to enter a passcode. If the device has a specific passcode, enter it in the Passcode field and tap **Next**. If the device does not have a specific passcode, enter a passcode in the Passcode field and tap **Next**. The Bluetooth radio tries to connect with the device.

9. If you created a passcode, you will be prompted by the other device to enter the same passcode. Enter the created passcode to establish a paired connection. (If you entered a passcode from the device, you shouldn't have to do anything on the other device.)
10. When the connection is complete, a list of matching and supported services on the device appears.
11. Select the services you want to use and tap Finish. The services on the new devices have to be selected or else the pairing won't include those services, even though the devices are paired. If services are not selected, you will be continually reprompted for the passcode from the device.
12. The device appears in the list on the main window.

After the passcodes have been accepted on both sides, you have a trusted ("paired") connection.

## Available Services

- ✓ **NOTE** Some devices might not require a PIN. This depends upon the device's authentication.

See the following sections for information on available services.

### Object Push Services via Beam

- ✓ **NOTE** You can only send files to a remote device using the Beam function.

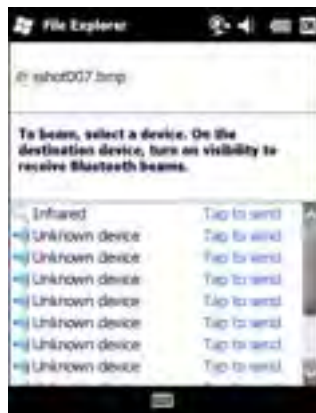
Use the OBEX Push Service to send files and contacts to another Bluetooth device. To transfer files between the MC75A and another Bluetooth enabled device:

1. Ensure that Bluetooth is enabled and discoverable on both devices.
2. Ensure that the two devices are within 30 feet (10 meters) of one another.
3. Tap **Start > Programs > File Explorer**.
4. Navigate to the file to transfer.
5. Tap and hold on the filename until the pop-up menu appears.



**Figure 6-7** File Explorer Window

6. Select **Beam File**. The MC75A searches for Bluetooth devices in the area.
7. Tap **Tap to send** next to the Bluetooth device to send the file to. The MC75A communicates with the device and send the file. When completed, **Tap to send** changes to **Done**.



**Figure 6-8** Beam File Window

To transfer a contact between the MC75A and another Bluetooth enabled device:

1. Ensure that Bluetooth is enabled and discoverable on both devices.
2. Ensure that the two devices are within 30 feet (10 meters) of one another.
3. Tap **Start > Contacts**
4. Navigate to the contact to transfer.
5. Tap and hold on the contact until the pop-up menu appears.



**Figure 6-9** Contact Window

6. Select **Send Contact > Beam**. The MC75A searches for Bluetooth devices in the area.
7. Tap **Tap to send** next to the Bluetooth device to send the file to. The MC75A communicates with the device and send the contact. When completed, **Tap to send** changes to **Done**.

## Internet Sharing

Internet Sharing allows the user to connect a computer or laptop to the MC75A and use the MC75A as a modem to connect to an office network or ISP.

To use MC75A as a modem using Bluetooth:

1. Ensure that the device is not connected to the computer or laptop.
2. On the MC75A, ensure that the Phone is on and a data connection is configured.

3. Tap > **Programs** > **Internet Sharing**.
4. In the **PC Connection** list, select **Bluetooth PAN**.
5. In the **Network Connection** list, select the connection type.  
Select the network connection that the device should use to connect to the Internet.
6. Tap **Connect**.
7. On the computer or laptop, setup a Bluetooth PAN with your device.
  - a. Select **Start** > **Control Panel** > **Network Connections**.
  - b. Under **Personal Area Network**, select **Bluetooth Network Connection**.
  - c. Right-click on **Bluetooth Network Connection** and select **View Bluetooth** network devices.
  - d. In the **Bluetooth Personal Area Network Devices** window select your device.
  - e. Click **Connect**. The computer connects to the device via Bluetooth.

✓ **NOTE** If your computer is Bluetooth-enabled and you select Bluetooth as the PC connection, you must initiate and complete the Bluetooth PAN partnership before Internet Sharing will work. For more information, refer to Windows Help and Support.

8. To verify, on the PC or laptop, launch **Internet Explorer** and open a web site.
9. To end dial-up networking, on the MC75A tap **Disconnect**.

### Hands-free Services

To connect to a Bluetooth headset:

✓ **NOTE** Newer Bluetooth headsets are device dependant and remember the last device they connected to. If problems occur while connecting to the headset, place the headset in discovery mode. Refer to the headset user manual for more information.

Only WAN audio is routed to the headset. System audio is still emitted through the MC75A speaker.

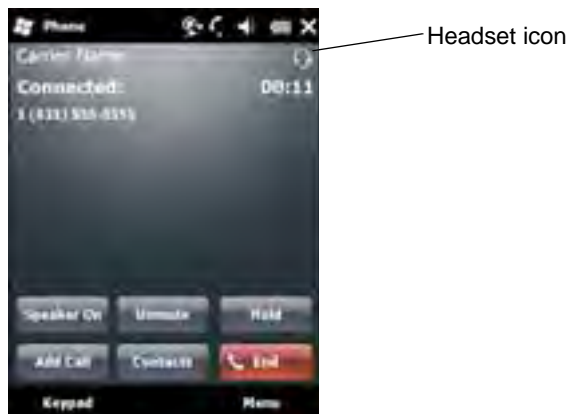
You can accept calls and re-dial using the Hands-free profile.

1. Ensure that Bluetooth is enabled and discoverable on both devices.
2. Ensure that the two devices are within 30 feet (10 meters) of one another.
3. Tap **Start** > **Settings** > **Connections** > **Bluetooth** icon.
4. Tap **New device**. The MC75A searches for Bluetooth devices in the area.
5. Select the headset name and tap **Next**. The Passcode window appears.
6. Enter the headset's passcode.
7. Tap **Next**. The MC75A connects to the headset. Refer to the headset user manual for instructions on communicating with a Bluetooth device.

✓ **NOTE** During an active connection, the MC75A cannot go into suspend mode when the Power Button is pressed. A message appears notifying the user.

Once the WAN call is disconnected (with Hands-free profile) the Power button is enabled.





**Figure 6-10** WWAN Bluetooth Audio Notification Dialog Box

## Serial Port Services

Use the wireless Bluetooth serial port connection as you would a physical serial cable connection. Configure the application that will use the connection to the correct serial port.

To establish a serial port connection:

1. Ensure that Bluetooth is enabled and discoverable on both devices.
2. Ensure that the two devices are within 30 feet (10 meters) of one another.
3. Tap **Start > Settings > Connections** tab > **Bluetooth** icon > **Devices** tab.
4. Tap **Add new device**. The MC75A begins searching for discoverable Bluetooth devices in the area.
5. Select a device from the list.
6. Tap **Next**. The **Enter Passcode** window appears.

✓ **NOTE** If Smart-pairing is configured and the device is requesting one of the pre-defined PINs, the **Enter Passcode** window does not appear.

7. Enter the Passcode and tap **Next**. The device is added to the Bluetooth list.
8. In the device list, tap the serial device. The **Partnership Settings** window displays.
9. Select the **Serial Port** checkbox.
10. Tap **Save**.
11. Tap **COM Ports** tab.
12. Tap **New Outgoing Port**. The add device window appears.
13. Select the serial device in the list and then tap **Next**.
14. Select a COM port from the drop-down list.
15. Tap **Finish**.

✓ **NOTE** No connection is made at this point. An application must open the selected COM port to trigger Microsoft Bluetooth stack to open the connection.

## ActiveSync Using Serial Port Services

Use the wireless Bluetooth serial port connection for ActiveSync just as you would a physical serial cable connection. You must configure the application that will use the connection to the correct serial port.

To set up a Bluetooth ActiveSync connection:

Before setting up a Bluetooth ActiveSync connection, configure the Bluetooth function of your device.

- ✓ **NOTE** For additional security, disable network bridging on the computer (specifically, bridging to a Remote NDIS adapter) before connecting to the computer to pass through to the Internet or a network. For more information on network bridging, see **Windows Help** on your computer.

The instructions below are for computers that support the Windows XP SP2 or later version operating system.

1. Ensure that Bluetooth is enabled and discoverable on both devices.
2. Ensure that the two devices are within 30 feet (10 meters) of one another.
3. On the computer, click **Start > Settings > Control Panel**.
4. Double-click **Bluetooth Devices**.
5. On the **Options** tab, select the **Turn discovery on** and **Allow Bluetooth devices to connect to this computer** checkboxes.



**Figure 6-11** Computer Bluetooth Devices Window

6. On the **COM Ports** tab, click **Add**.
7. Select the **Incoming (device initiates the connection)** option, then click **OK**.  
Note the number of the COM port that was added.
8. Click **OK**.
9. Click **Start > All Programs > Microsoft ActiveSync**.
10. Click **File > Connection Settings**.



**Figure 6-12** ActiveSync Connection Settings

11. On the **Allow connections to one of the following** drop-down list, select the COM port with the number you noted earlier.
12. On the MC75A, tap **Start > Programs > ActiveSync**.
13. Tap **Menu > Connect via Bluetooth**.

Synchronization is automatically initiated. The **ActiveSync** icon appears on the lower right corner of the **Today** screen.

If an Authentication is required, the **Enter Passcode** screen appears, type an alphanumeric passkey (PIN code), then tap **Next**; enter the same passkey on the other device.

The passkey is recommended for enhanced security. Your passkey must be between 1 to 16 alphanumeric characters.

If you do not want to use a passkey, tap **Next**.

14. To disconnect the ActiveSync connection, tap the **ActiveSync** icon on the Today screen.
15. Tap **Disconnect**.

### Phone Book Access Profile Services

Phone Book Access profile (PBAP) is used to synchronize contacts between a remote device and the MC75A. To establish an PBAP synchronization:

1. Ensure that Bluetooth is enabled and discoverable on both devices.
2. Ensure that the two devices are within 30 feet (10 meters) of one another.
3. Tap **Start > Settings > Connection tab > Bluetooth icon > Devices tab**.
4. Tap **Add New Device**. The MC75A searches for a Bluetooth device, such as a Car Kit.
5. Select a device from the list.
6. Tap **Next**. The **Enter Passcode** window appears.

✓ **NOTE** If Smart-pairing is configured and the device is requesting one of the pre-defined PINs, the **Enter Passcode** window does not appear.

7. Enter the Passcode and the tap **Next**. The device is added to the Bluetooth list.

8. A dialog box appears requesting if you want to transfer contacts to the car kit.
9. Select **Yes** or **No**.
10. If **Yes** is selected, contacts from the MC75A are transferred to the car kit.

### Dial-Up Networking Services

Dial-up networking allows the user to connect a PC or laptop to the MC75A and use the MC75A as a modem to connect to an office network or ISP.

Before setting up dial-up networking, obtain dial-up information and other necessary settings (username, password and domain name, if required) for the office network or ISP. To create a new Bluetooth connection:

1. Ensure the MC75A is discoverable and connectable.
2. On the PC or laptop, set up Bluetooth according to the manufacturer's instructions.
3. On the PC or laptop Bluetooth software, search for the MC75A and select the Dial-up Networking service.
4. Using dial-up software on the PC or laptop, connect to the MC75A.
5. The MC75A phone function dials the ISP number and connects to the ISP.
6. To verify, on the PC or laptop, launch Internet Explorer and open a web site.

### Connect to a HID Device

The MC75A can connect to an Human Interface Device (HID) device such as a Bluetooth keyboard or mouse:

1. Ensure that Bluetooth is enabled on both devices.
2. Ensure that the Bluetooth device to discover is in discoverable and connectable modes.
3. Ensure that the two devices are within 30 feet (10 meters) of one another.
4. Tap **Start** > **Settings** > **Connections** tab > **Bluetooth** icon > **Devices** tab.
5. Tap **Add new device**. The MC75A begins searching for discoverable Bluetooth devices in the area.
6. Select a HID device from the list.
7. Tap **Next**. The **Enter Passcode** window appears. Refer to the device's User Manuals for more information.

✓ **NOTE** If Smart-pairing is configured and the device is requesting one of the pre-defined PINs, the **Enter Passcode** window does not appear.

8. Tap **Connect**. The MC75A connects to the HID device.

### A2DP/AVRCP Services

A2DP/AVRCP is used to connect to a high-quality stereo headset:

1. Ensure that Bluetooth is enabled on both devices.
2. Ensure that the Bluetooth device to discover is in discoverable and connectable modes.
3. Ensure that the two devices are within 30 feet (10 meters) of one another.
4. Tap **Start** > **Settings** > **Connections** tab > **Bluetooth** icon > **Devices** tab.

5. Tap **Add new device**. The MC75A begins searching for discoverable Bluetooth devices in the area.
6. Select a stereo headset from the list.
7. Tap **Next**. The **Enter Passcode** window appears. Refer to the device's User Manuals for more information.

✓ **NOTE** If Smart-pairing is configured and the device is requesting one of the pre-defined PINs, the **Enter Passcode** window does not appear.

8. Tap **Connect**. The MC75A connects to the stereo headset.

For stereo headsets that can use hands-free services, connect to the hands-free service after connecting to the A2DP service:

1. Tap **Start > Settings > Connections** tab > **Bluetooth** icon > **Devices** tab.
2. Tap **Add new device**. The MC75A begins searching for discoverable Bluetooth devices in the area.
3. Select a stereo headset from the list.
4. Tap **Next**. The **Enter Passcode** window appears. Refer to the device's User Manuals for more information.

✓ **NOTE** If Smart-pairing is configured and the device is requesting one of the pre-defined PINs, the **Enter Passcode** window does not appear.

5. Tap **Connect**. The MC75A connects to the stereo headset.

## Using StoneStreet One Bluetooth Stack

The following sections provide information on using the StoneStreet One Bluetooth stack.

### Turning the Bluetooth Radio Mode On and Off

Turn off the Bluetooth radio to save power or if entering an area with radio restrictions (e.g., an airplane). When the radio is off, other Bluetooth devices cannot see or connect to the MC75A. Turn on the Bluetooth radio to exchange information with other Bluetooth devices (within range). Communicate only with Bluetooth radios in close proximity.

✓ **NOTE** To achieve the best battery life turn off radios not in use.

#### Disabling Bluetooth

To disable Bluetooth, tap the Connection icon on the Status bar and select **Wireless Manager** in the Connectivity dialog box. Tap the blue **Bluetooth** bar to turn off the Bluetooth radio.

#### Enabling Bluetooth

To enable Bluetooth, tap the Connection icon on the Status bar and select **Wireless Manager** in the Connectivity dialog box. Tap the blue **Bluetooth** bar to turn on the Bluetooth radio.

### Modes

The BTE Explorer application has two modes for managing Bluetooth connections: Wizard Mode and Explorer Mode. The Wizard Mode is for novice Bluetooth users and the Explorer Mode is for experienced Bluetooth users. To switch between modes, select **View > Wizard Mode** or **View > Explorer Mode**.

#### Wizard Mode

Wizard Mode provides a simple process for discovering and connecting to Bluetooth devices.

✓ **NOTE** Switching between Wizard Mode and Explorer Mode closes all active connections.

Wizard Mode shows the devices and services in a simple Favorites view created by following the step-by-step wizard.

#### Explorer Mode

The **Explorer Mode** window is easy to navigate and provides greater control to users familiar with Bluetooth. The menu bar provides quick access to the options and tools used to connect to devices. To access Explorer Mode, tap **View > Explorer Mode**.



**Figure 6-13** Explorer Mode Window

You can also use the “tap and hold” technique to view available options. Scroll bars and view options are similar to those on the Windows desktop. The tree structure lists the following sub-items:

- Local Device - This device
- Remote Device - Other Bluetooth devices
  - Trusted Devices - Bonded (paired) Bluetooth devices
  - Untrusted Devices - Discovered devices that are not bonded
- Favorites - Selected services that are set as *Favorite* for quick access.

✓ **NOTE** Switching between Wizard Mode and Explorer Mode closes all active connections.

## Discovering Bluetooth Device(s)

The MC75A can receive information from discovered devices without bonding. However, once bonded, the MC75A and a bonded device exchange information automatically when you turn the Bluetooth radio on. See [Bonding with Discovered Device\(s\) on page 6-32](#) for more information.

To find Bluetooth devices in the area:

1. Ensure that Bluetooth is enabled on both devices.
2. Ensure that the Bluetooth device to discover is in discoverable and connectable modes.
3. Ensure that the require profile is enabled on the MC75A. See [Profiles Tab on page 6-45](#) for more information.
4. Ensure that the two devices are within 30 feet (10 meters) of one another.
5. Tap **Start > BTExplorer**. The **BTExplorer** window appears.

✓ **NOTE** If favorite connections have already been created, the **Favorites** screen displays. If no favorite connections have been created, the **New Connection Wizard** screen displays.

6. Tap **Menu > New Connection**. The **New Connection Wizard** appears.



Figure 6-14 BTE Explorer Window

7. Select **Explore Services on Remote Device** or another from the drop-down list and tap **Next**.

✓ **NOTE** If a device discovery action has not been previously performed, a device discovery is automatically initiated. If a device discovery has previously been performed, the device discovery process is skipped, and the previously found list of devices displays. To start a new device discovery, tap and hold in the window and select **Discover Devices** from the pop-up menu.

8. **BTE Explorer** searches for Bluetooth devices in the area.



Figure 6-15 Discover Devices Dialog Box

The discovered devices display in the **Select Remote Device** window.





Figure 6-16 Select Remote Device Window

9. Select a device from the list and tap **Next**. The MC75A searches for services on the selected Bluetooth device.



Figure 6-17 Device Services

- ✓ **NOTE** If the MC75A discovers a service but the service is not supported, the service icon is grayed-out.

10. Select a service from the list and press **Next**. The **Connection Favorite Options** window appears.



Figure 6-18 Connection Favorite Options Window

11. In the **Favorite Name** text box, enter a name for this service that will appear in the **Favorite** window.

12. Tap **Next**. The **Connection Summary** window appears.
13. Tap **Connect** to add the service to the **Favorite** window and connect to the service.



Figure 6-19 Favorites Window

## Available Services

- ✓ **NOTE** Some devices might not require a PIN. This depends upon the device's authentication.

See the following sections for information on available services.

### File Transfer Services

- ✓ **NOTE** Shared folders are a security risk.

To transfer files between the MC75A and another Bluetooth enabled device:

1. Ensure that OBEX File Transfer profile is enabled on the MC75A. See [Profiles Tab on page 6-45](#) for more information.
- ✓ **NOTE** If favorite connections have already been created, the **Favorites** screen displays. If no favorite connections have been created, the **New Connection Wizard** screen displays.
2. Use the **Connection Wizard** to search for a Bluetooth device.
3. Select the device and tap **Next**. The **Select Remote Service** window appears.
4. Tap **Next**. The **Connection Favorite Options** window appears.
5. Tap **Next**. The **Connection Summary** window appears.
6. Tap **Connect**. The remote device's accessible folders appear.

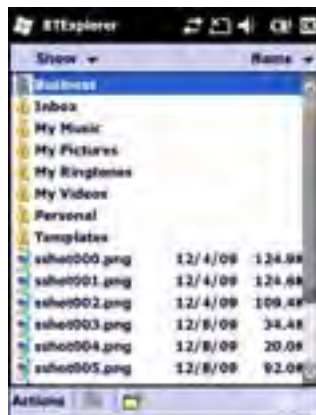


Figure 6-20 File Transfer Window

7. Double-tap the file to copy. The **Save Remote File** window appears.



Figure 6-21 Save Remote File Window

8. Tap and hold on the file. A pop-up menu appears.
9. Select the action to perform:
  - **New** - create a new file or folder on the remote device
  - **Delete** - delete the selected file on the remote device.
  - **Get File** - copy the file from the remote device to the MC75A.
  - **Put File** - copy a file from the MC75A to the remote device.

### **Creating a New File or Folder**

To create a new folder or file on the remote device:

1. Tap and hold on the screen and select **New > Folder** or **New > File**. The **Create New Folder** or **Create New File** window appears.
2. Enter the name for the new folder or file.
3. Tap **OK** to create the new folder or file on the remote device.

### ***Deleting a File***

To delete a file from the remote device:

1. Tap and hold on the file to delete and select **Delete**.
2. In the **Delete Remote Device File** dialog box tap **Yes**.

### ***Getting a File***

To copy a file from a remote device:

1. Double-tap or tap and hold on the file and select **Get**. The **Save Remote File** window appears.
2. Navigate to the directory to save the file.
3. Tap **Save**. The file is transferred from the remote device to the MC75A.

### ***Copying a File***

To copy a file to a remote device:

1. Tap **Action > Put**. The **Send Local File** window appears.
2. Navigate to the directory to save the file and select a file.
3. Tap **Open**. The file copies from the MC75A to the remote device.

## **Connecting to the Internet Using an Access Point**

This section explains how to access a Bluetooth-enabled LAN access point (AP) for a network connection. Use Internet Explorer to connect to a server.

1. Ensure the MC75A is discoverable and connectable. See [Device Info Tab on page 6-34](#).
2. Ensure that the **Personal Area Networking** profile is enabled on the MC75A. See [Profiles Tab on page 6-45](#) for more information.
3. Use the **Connection Wizard** to search for a Bluetooth AP.

✓ **NOTE** If favorite connections have already been created, the **Favorites** screen displays. If no favorite connections have been created, the **New Connection Wizard** screen displays.

4. Select the **Personal Area Network** or **Network Access** service and select **Connect** from the pop-up menu. The MC75A connects with the access point.
5. Tap **Start > Internet Explorer**. The **Internet Explorer** window appears.
6. In the address field, enter an internet address and tap the **Enter** button. The web page loads.

✓ **NOTE** Network Access profile is not supported.

## **Dial-Up Networking Services**

Dial-up networking allows the user to connect a PC or laptop to the MC75A and use the MC75A as a modem to connect to an office network or ISP.

Before setting up dial-up networking, obtain dial-up information and other necessary settings (username, password and domain name, if required) for the office network or ISP. To create a new Bluetooth connection:

1. Ensure the MC75A is discoverable and connectable. See [Device Info Tab on page 6-34](#).
2. Ensure that the **Dial-Up Networking** profile is enabled on the MC75A. See [Profiles Tab on page 6-45](#) for more information.
3. Tap **Menu > Settings > Services** tab.
4. Tap **Add** button.
5. Select **Dial-up networking Service**.
6. Tap **OK**. The **Edit Local Services** window appears.



**Figure 6-22** *Edit Local Service Window*

7. In the **Local COM Port** drop-down list, select **DUN1** for GSM configurations or **WMP9** for CDMA configurations.
8. Tap **OK** twice.
9. On the PC or laptop, set up Bluetooth according to the manufacturer's instructions.
10. On the PC or laptop Bluetooth software, search for the MC75A and select the Dial-up Networking service.
11. Using dial-up software on the PC or laptop, connect to the MC75A.
12. The MC75A phone function dials the ISP number and connects to the ISP.
13. To verify, on the PC or laptop, launch Internet Explorer and open a web site.

### Object Exchange Push Services

Object Exchange (OBEX) is a set of protocols that allows sharing objects such as Contacts or pictures using Bluetooth.

To exchange contact information with another Bluetooth enabled device:

1. Ensure the MC75A is discoverable and connectable. See [Device Info Tab on page 6-34](#).
2. Ensure that the **OBEX Object Push** profile is enabled on the MC75A. See [Profiles Tab on page 6-45](#) for more information.

✓ **NOTE** If favorite connections have already been created, the **Favorites** screen displays. If no favorite connections have been created, the **New Connection Wizard** screen displays.

3. Use the **Connection Wizard** to search for a Bluetooth device.

4. Select the device and tap **Next**.
5. Select the **OBEX Object Push** service and select **Connect**. The **OBEX Object Push** window appears.
6. In the **Action** drop-down list, select one of the following options: **Send Contact Information**, **Swap Contact Information**, **Fetch Contact Information**, or **Send a Picture**.

### ***Sending a Contact***


To send a contact to another device:

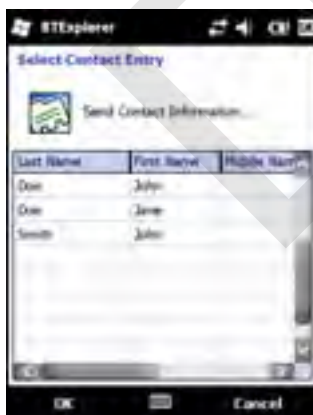
- ✓ **NOTE** Prior to sending and receiving contacts, a default contact must be set up before attempting to send a contact.

1. Tap and hold on **OBEX Object Push** and select **Connect**. The **OBEX Object Push** window appears.



**Figure 6-23** *OBEX Object Push Window*

2. In the **Action:** drop-down list, select **Send Contact Information**.
3. Tap . The **Select Contact Entry** window appears.



**Figure 6-24** *Select Contact Entry Window*

4. Select a contact to send to the other device.
5. Tap **OK**.
6. Tap **OK** to send the contact to the other device and display a confirmation dialog box on the other device to accept the contact. A **Send Contact** dialog appears.

7. Tap **Ok**.

### **Swapping Contacts**


To swap contacts with another device:

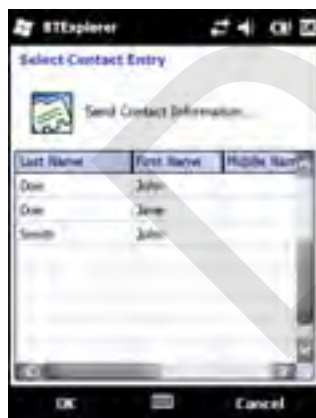
- ✓ **NOTE** Prior to swapping contacts, a default contact must be set up before attempting to send a contact. Ensure that the MC75A is connectable.

1. Tap and hold on **OBEX Object Push** and select **Connect**. The **OBEX Object Push** window appears.



**Figure 6-25** OBEX Object Push Window

2. In the **Action:** drop-down list, select **Swap Contact Information**.
3. Tap . The **Select Contact Entry** window appears.



**Figure 6-26** Select Contact Entry Window

4. Select a contact to send to the other device.
5. Tap **OK**.
6. Tap **OK** to swap contacts with the other device and display a confirmation dialog box on the other device to accept the contact.
7. Tap **Ok**.

### Fetching a Contact

To fetch a contact from another device:

- ✓ **NOTE** Prior to sending and receiving contacts, a default contact must be set up before attempting to send a contact. Ensure that the MC75A is connectable.

1. Tap and hold on **OBEX Object Push** and select **Connect**. The **OBEX Object Push** window appears.



Figure 6-27 OBEX Object Push Window

2. In the **Action:** drop-down list, select **Fetch Contact information**.
3. Tap **OK**. The contact on the other device is copied.


### Sending a Picture

To send a picture to another device:

1. Tap and hold on **OBEX Object Push** and select **Connect**. The **OBEX Object Push** window appears.



Figure 6-28 OBEX Object Push Window

2. In the **Action:** drop-down list, select **Send A Picture**.
3. Tap . The **Send Local Picture** window appears.





**Figure 6-29** Send Local Picture Window

4. Navigate to the picture to send to the other device.
5. Tap **Open**.
6. Tap **OK** to send the picture to the other device and display a confirmation dialog box on the other device to accept the picture. A **Send Picture** dialog appears.
7. Tap **Ok**.

## Headset Services

To connect to a Bluetooth headset:

1. Ensure the MC75A is connectable (required when automatic re-connect is initiated). See [Device Info Tab on page 6-34](#).
2. Ensure that the **Headset** Audio Gateway service is enabled on the MC75A (required when automatic re-connect is initiated). See [Services Tab on page 6-34](#) for more information.
3. Use the **Connection Wizard** to search for a Bluetooth headset.
4. Select the device and tap **Next**.
5. Select the **Headset** service name and select **Connect**. A beep is heard in the headset. Refer to the headset user manual for instructions on communicating with a Bluetooth device.

✓ **NOTE** When using a Bluetooth headset with Headset Services, you cannot accept or end a call from the headset. You must accept or end a call on the MC75A.

6. Press the call button on the headset to accept the connection. System audio is heard on the Bluetooth headset..
7. When a call is received on the MC75A, tap the **Accept** button on the MC75A to answer the call. If the call button is pressed, the Bluetooth connection is disconnected.

✓ **NOTE** Newer Bluetooth headsets are device dependant and remember the last device they connected to. If problems occur while connecting to the headset, place the headset in discovery mode. Refer to the headset user manual for more information.

## Hands-free Services

To connect to a Bluetooth headset:

- ✓ **NOTE** Newer Bluetooth headsets are device dependant and remember the last device they connected to. If problems occur while connecting to the headset, place the headset in discovery mode. Refer to the headset user manual for more information.

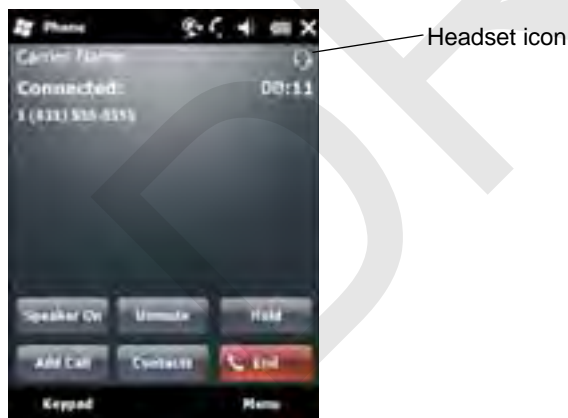
Only WAN audio is routed to the headset. System audio is still emitted through the MC75A speaker.

You can accept calls and re-dial using the Hands-free profile.

Hands-free profile does not support 3-way calling.

1. Ensure the MC75A is connectable (required when automatic re-connect is initiated). See [Device Info Tab on page 6-34](#).
2. Ensure that the **Hands Free** profile is enabled on the MC75A. See [Profiles Tab on page 6-45](#) for more information.
3. Use the **Connection Wizard** to search for a Bluetooth hands-free headset.
4. Select the hand-free device and tap **Next**.
5. Select the **Hands-free** service name and select **Connect**. The MC75A connects to the headset. Refer to the headset user manual for instructions on communicating with a Bluetooth device.
6. During an active connection, the MC75A cannot go into suspend mode when the Power Button is pressed. A message appears notifying the user.

Once the WAN call is disconnected (with Hands-free profile) the Power button is enabled.



**Figure 6-30** WWAN Bluetooth Audio Notification Dialog Box

## Serial Port Services

Use the wireless Bluetooth serial port connection as you would a physical serial cable connection. Configure the application that will use the connection to the correct serial port.

To establish a serial port connection:

1. Use the **Connection Wizard** to search for a Bluetooth serial device.
2. Select the device and tap **Next**. The **Connection Favorite Options** window appears.

3. In the **Local COM Port:** drop-down list select a COM port.
4. Tap **Finish**.

### ActiveSync Using Serial Port Services

- ✓ **NOTE** By default, COM ports COM5, COM9, COM11, COM21, COM22 and COM23 are Bluetooth virtual ports. If an application opens one of these ports, the Bluetooth driver activates and guides you through a Bluetooth connection.

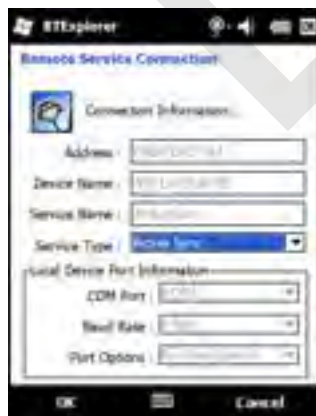
Use the wireless Bluetooth serial port connection for ActiveSync just as you would a physical serial cable connection. You must configure the application that will use the connection to the correct serial port.



**Figure 6-31** ActiveSync Connection Settings Window on PC

To establish an ActiveSync connection:

1. Ensure that the **Sync** profile is enabled on the MC75A. See [Profiles Tab on page 6-45](#) for more information.
2. Use the **Connection Wizard** to search for a Bluetooth device, such as a PC. In the drop-down list select **ActiveSync via Bluetooth**.
3. Select the device and tap **Next**. The **Connection Favorite Options** window appears.
4. Tap **Connect**. The **Remote Service Connection** window appears.



**Figure 6-32** Remote Service Connection Window

5. In the **Service Type** drop-down list, select **Active Sync**.

6. Tap **OK**. The MC75A connects the PC and an ActiveSync session begins.
7. Tap **Finish**. The Connection Favorite Options window appears.
8. To end the session, tap the ActiveSync icon in the **Favorite** window and select **Disconnect** from the pop-up window.

### Personal Area Network Services

- ✓ **NOTE** This profile supports Ad-hoc and PAN User. Network Access Profile is not supported.

Connect two or more Bluetooth devices to share files, collaborate, or play multi-player games. To establish a Personal Area Network connection:

1. Ensure that the **Personal Area Networking** profile is enabled on the MC75A. See [Profiles Tab on page 6-45](#) for more information.
2. Use the **Connection Wizard** to search for a Bluetooth device.
3. Select the device and tap **Next**. The **Connection Favorite Options** window appears.
4. Tap **Next**. The **Connection Summary** window appears.
5. Tap **Connect**. The MC75A connects to the Bluetooth device.

### IrMC Synchronization Services

IrMC Synchronization is used to synchronize PIM contacts between a remote device and the MC75A. To establish an IrMC synchronization:

1. Ensure the MC75A is connectable (required when automatic re-connect is initiated). See [Device Info Tab on page 6-34](#).
2. Ensure that the **Sync** profile is enabled on the MC75A. See [Profiles Tab on page 6-45](#) for more information.
3. Tap **Menu > Settings > Services** tab.
4. Tap **Add** button.
5. Select **IrMC Synchronization**.
6. Tap **OK**. The **Edit Local Services** window appears.
7. Tap **OK** twice.
8. Use the **Connection Wizard** to search for a Bluetooth device, such as a Car Kit.
9. Select the device and tap **Next**. The **Connection Favorite Options** window appears.
10. Tap and hold **IrMA Synchronization** and select **Connect** in the pop-up menu.

- ✓ **NOTE** To automatically transfer contact with a Car Kit, ensure that the IrMC Synchronization service is enabled on the MC75A.

### A2DP/AVRCP Services

A2DP/AVRCP is used to connect to a high-quality stereo headset:

1. Ensure the MC75A is connectable (required when automatic re-connect is initiated). See [Device Info Tab on page 6-34](#).
2. Ensure that the remote Bluetooth device is in discoverable mode. See the devices user manual for instructions.
3. Ensure that the **A2DP/AVRCP** profile is enabled on the MC75A. See [Profiles Tab on page 6-45](#) for more information.
4. Tap **Menu > Settings > Services** tab.
5. Tap **Add** button.
6. Select **Advanced Audio Distribution Services**.
7. Tap **OK**. The **Edit Local Services** window appears.
8. Tap **OK** twice.
9. Tap **Menu > New Connection**.
10. Select **Connect to High-Quality Audio** from the drop-down list.
11. Tap **Next**.
12. Select the device and tap **Next**.
13. Enter the PIN Code for the remote device and then tap **OK**. The **Connection Favorite Options** window appears.
14. Tap **Next**.
15. Tap **Connect**. The MC75A connects to the high-quality audio headset.

For stereo headsets that can use hands-free services, connect to the hands-free service after connecting to the A2DP service:

1. Tap **Menu > New Connection**.
2. Select **Connect to Headset** from the drop-down list.
3. Tap **Next**.
4. Select the stereo headset and tap **Next**.
5. Select the **Hands-Free unit** service and then tap **Next**.
6. Tap **Next**.
7. Tap **Connect**.

### Connect to a HID Device

The MC75A can connect to an Human Interface Device (HID) device such as a Bluetooth keyboard:

1. Ensure the MC75A is connectable (required when automatic re-connect is initiated). See [Device Info Tab on page 6-34](#).
2. Ensure that the remote Bluetooth device is in discoverable mode. See the device user manual for instructions.
3. Ensure that the **HID Client** profile is enabled on the MC75A. See [Profiles Tab on page 6-45](#) for more information.

4. Tap **Menu > New Connection**.
5. Select **Explore Services on Remote Device** from the drop-down list.
6. Tap **Next**.
7. Select the device and tap **Next**.
8. Select the service and tap **Next**.
9. The **Connection Favorite Options** window appears.
10. Tap **Next**.
11. Tap **Connect**. The MC75A connects to the HID device.

### Bonding with Discovered Device(s)

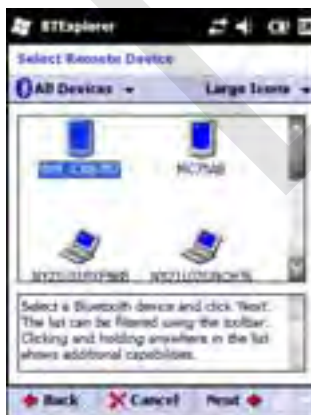
A bond is a relationship created between the MC75A and another Bluetooth device in order to exchange information in a secure manner. Creating a bond involves entering the same PIN on the two devices. After creating a bond and turning on the Bluetooth radios, the devices recognize the bond and can exchange information without re-entering a PIN.

To bond with a discovered Bluetooth device:

- ✓ **NOTE** If favorite connections have already been created, the **Favorites** screen displays. If no favorite connections have been created, the **New Connection Wizard** screen displays.

1. Tap **Start > BTE Explorer**. The **BTE Explorer** window appears.
2. Tap **Menu > New Connection**. The **New Connection Wizard** window appears.
3. In the drop-down list, select **Pair with Remote Device**.
4. Tap **Next**. The **Select Remote Device** window appears.

- ✓ **NOTE** Devices discovered previously are listed to save time. To start a new device discovery, tap and hold on the list area and select **Discover Devices** from the pop-up menu.



**Figure 6-33** Select Remote Device Window

5. Select a device from the list and tap **Next**. The **PIN Code Request** window appears.



**Figure 6-34** Connection Favorite Options Window

6. In the **PIN Code** field, enter the PIN code.
7. Tap **OK**. The **Pairing Status** window displays.
8. Tap **Finish**. The devices are successfully paired. The device name moves to the **Trusted Devices** window.

### ***Deleting a Bonded Device***

To delete a device no longer needed:

1. Tap **Start > BTExplorer**. The **BTExplorer** window appears.
2. Tap **Menu > Trusted Devices**. The **Trusted Devices** window appears.
3. Tap and hold on the device select **Delete Link Key** in the pop-up menu.
4. A confirmation dialog appears. Tap **Yes**.

### ***Accepting a Bond***

When a remote device wants to bond with the MC75A, enter a PIN when requested to grant permission.

1. Ensure that the MC75A is set to discoverable and connectable. See [Bluetooth Settings on page 6-34](#). When prompted to bond with the remote device the **PIN Code Request** window appears.



**Figure 6-35** PIN Code Request Window

2. In the **PIN Code:** text box, enter the same PIN entered on the device requesting the bond. The PIN must be between 1 and 16 characters.
3. In the **Device Name:** text box, edit the name of the device requesting the bond, if desired.
4. Tap **OK** to create the bond. The MC75A can now exchange information with the other device.

## Bluetooth Settings

Use the **BTE Explorer Settings** window to configure the operation of the **BTE Explorer** application. Tap **Menu > Settings**. The **BTE Explorer Settings** window appears.

### Device Info Tab

Use the **Device Info** tab to configure the MC75A's Bluetooth connection modes.



**Figure 6-36** BTE Explorer Settings - Device Info Tab

**Table 6-3** Device Info Tab Data

Item	Description
Device Name	Displays the name of the MC75A.
Discoverable Mode	Select whether or not the MC75A is discoverable by other Bluetooth devices.
Connectable Mode	Select whether or not the MC75A is connectable by other Bluetooth devices.

### Services Tab

- ✓ **NOTE** Ensure that the MC75A is discoverable and connectable when remote devices use MC75A services.

Use the **Services** tab to add or delete Bluetooth services.

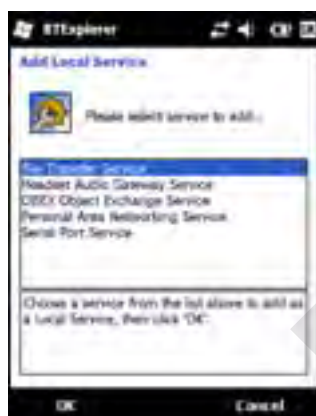




**Figure 6-37** BTE Explorer Settings - Services Tab

To add a service:

1. Tap **Add**. The **Add Local Service** window displays.



**Figure 6-38** Add Local Service Window

2. In the list, select a service to add.
3. Tap **OK**. The **Edit Local Service** window displays for the selected service.
4. Select the appropriate information and then tap **OK**. See the following sections for information on the available services.

### **Dial-Up Networking Service**

Dial-up Networking allows other Bluetooth devices to access a dial-up modem.



**Figure 6-39** BTE Explorer Settings - Dial-up Networking Information

**Table 6-4** Dial-up Networking Information Data

Item	Description
Service Name	Displays the name of the service.
Service Security	Select the type of security from the drop-down list. Options are <b>None</b> , <b>Authenticate</b> , or <b>Authenticate/Encrypt</b> .
Local COM Port	Select the COM port.
Local Baud Rate	Select the communication baud rate.
Local Port Options	Select the port option.

### **File Transfer Service**

File transfer allows other Bluetooth devices to browse files.



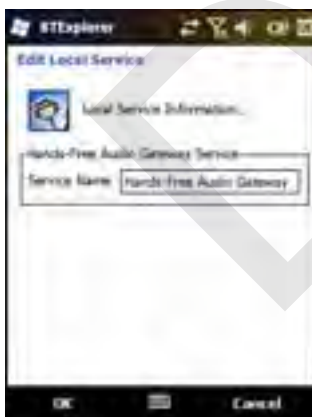
**Figure 6-40** BTE Explorer Settings - File Transfer Information

**Table 6-5** File Transfer Information Data

Item	Description
Service Name	Displays the name of the service.
Service Security	Select the type of security from the drop-down list. Options are <b>None</b> , <b>Authenticate</b> , or <b>Authenticate/Encrypt</b> .
Root Directory	Select the directory that other Bluetooth devices can access.
File Permissions	Select the file permissions for the selected directory. Check the appropriate box to grant read access, write access, and delete access.

### **Hands-Free Audio Gateway Service**

Hands-Free Service Audio Gateway allows connection to hands-free devices.



**Figure 6-41** BTE Explorer Settings - Hands-Free Audio Gateway

**Table 6-6** Hands-Free Audio Gateway Data

item	Description
Service Name	Lists the name of the audio service.

### Headset Audio Gateway Service

Headset Service Audio Gateway allows connection to headset devices.



Figure 6-42 BTE Explorer Settings - Headset Audio Gateway

Table 6-7 Headset Audio Gateway Data

Item	Description
Service Name	Lists the name of the audio service.

### IrMC Synchronization Service

The IrMC Synchronization service used to synchronize PIM contacts between a remote device and the MC75A.



Figure 6-43 BTE Explorer Settings - IrMC Synchronization

**Table 6-8** *IrMC Synchronization Data*

Item	Description
Service Name	Displays the name of the service.
Service Security	Select the type of security from the drop-down list. Options are <b>None</b> , <b>Authenticate</b> , or <b>Authenticate/Encrypt</b> .
Phonebook	Select the <b>Phonebook</b> checkbox to allow synchronization with the MC75A's contacts.
	Select <b>Read</b> , <b>Write</b> , <b>Create</b> and/or <b>Delete</b> to allow phonebook permissions.

### **OBEX Object Push Service**

OBEX Object Push allows other Bluetooth devices to push contacts, business cards, pictures, appointments, and tasks to the MC75A.

**Figure 6-44** *BTE Explorer Settings - OBEX Exchange Information***Table 6-9** *OBEX Exchange Information Data*

Item	Description
Service Name	Displays the name of the service.
Service Security	Select the type of security from the drop-down list. Options are <b>None</b> , <b>Authenticate</b> , or <b>Authenticate/Encrypt</b> .
Do not allow clients to push objects	Disables clients from pushing objects to the MC75A.
Inbox Directory	Select a directory where another Bluetooth device can store files.

### **Personal Area Networking Service**

Personal Area Networking hosts a Personal Area Network which allows communication with other Bluetooth devices.



**Figure 6-45** BTE Explorer Settings - Personal Area Networking

**Table 6-10** Personal Area Networking Data

Item	Description
Service Name	Displays the name of the service.
Service Security	Select the type of security from the drop-down list. Options are <b>None</b> , <b>Authenticate</b> , or <b>Authenticate/Encrypt</b> .
Support Group Ad-Hoc Networking	Select to enable Ad-Hoc networking.

### **Serial Port Service**

Serial port allows other Bluetooth devices to access COM ports.



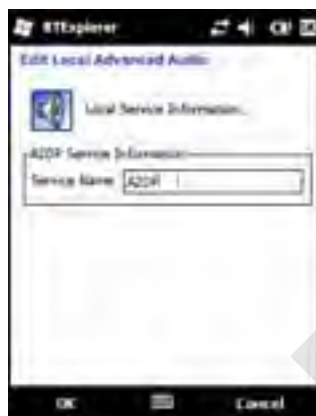
**Figure 6-46** BTE Explorer Settings - Serial Port Services

**Table 6-11** Serial Port Services Data

Item	Description
Service Name	Displays the name of the service.
Service Security	Select the type of security from the drop-down list. Options are <b>None</b> , <b>Authenticate</b> , or <b>Authenticate/Encrypt</b> .
Local COM Port	Select the COM port.
Local Baud Rate	Select the communication baud rate.
Local Port Options	Select the port option.

**Advanced Audio Distribution Service**

Advanced Audio Distribution hosts connects from Bluetooth devices supporting high-quality stereo audio.

**Figure 6-47** BTE Explorer Settings - Advanced Audio Distribution**Table 6-12** Advanced Audio Distribution Data

Item	Description
Service Name	Lists the name of the audio service.

### Audio Video Remote Control Service

Audio Video Remote Control hosts connections from Bluetooth devices supporting audio remote-control functionality.



Figure 6-48 BTE Explorer Settings - Audio Video Remote Control

Table 6-13 Audio Video Remote Control Data

Item	Description
Service Name	Lists the name of the audio service.

### Security Tab

Security settings allows you to set global security policies for Bluetooth. Note that these settings are only active on local Services that are set to Authenticate or Authenticate/Encryption. You can set authentication on local Services under the Services tab.

To adjust the security settings for an individual service, select the **Services** tab first, then select the individual service, then **Properties**.



Figure 6-49 BTE Explorer Settings - Security Tab

- ✓ **NOTE** To use PIN Code, select **Authenticate** or **Authenticate/Encrypt** from the Service Security drop-down list on each local service.



**Table 6-14** Security Tab Data

Item	Description
Use PIN Code (Incoming Connection)	Select for automatic use of the PIN code entered in the <b>PIN Code</b> text box. It is recommended not to use this automatic PIN code feature. See <a href="#">Security on page 6-2</a> for more information.
PIN Code	Enter the PIN code.
Encrypt Link On All Outgoing Connections	Select to enable or disable encryption on all outgoing connections to other Bluetooth devices.

### Discovery Tab

Use the **Discovery** tab to set and modify discovered devices.

**Figure 6-50** BTE Explorer Settings - Discovery Tab**Table 6-15** Discovery Tab Data

Item	Description
Inquiry Length	Sets the amount of time the MC75A takes to discover Bluetooth devices in the area.
Name Discovery Mode	Select either <b>Automatic</b> or <b>Manual</b> to automatically attempt to discover a Bluetooth device's name after finding the device.
Discovered Devices - Delete Devices	Deletes all discovered devices and link keys from memory.
Discovered Devices - Delete Linked Keys	Removes all pairing from remote Bluetooth devices, and makes them all un-trusted.

### Virtual COM Port Tab

Virtual COM Port defines which COM ports BTE Explorer attempts to use for virtual COM ports. Check the appropriate checkbox to use the port as a virtual COM port. When finished, choose **Apply** to enforce changes, or **Revert** to restore the original settings.



**Figure 6-51** BTE Explorer Settings - Virtual COM Port Tab

**Table 6-16** Virtual COM Port Tab Data

Item	Description
COM5:Bluetooth	Enable or disable COM Port 5.
COM9:Bluetooth	Enable or disable COM Port 9.
COM11:Bluetooth	Enable or disable COM Port 11.
COM21:Bluetooth	Enable or disable COM Port 21.
COM22:Bluetooth	Enable or disable COM Port 22.
COM23:Bluetooth	Enable or disable COM Port 23.

### HID Tab

Use the **HID** tab to select The Human Interface Device Profile programming interface defines the protocols and procedures to be used to implement HID capabilities.

Provides support for devices such as mice, joysticks, keyboards.



Figure 6-52 BTE Explorer Settings - HID Tab

Table 6-17 HID Tab Data

Item	Description
Enable Key Repeat	Enables key repeat functionality.
Delay	To increase key repeat delay, drag the <b>Delay</b> slider to the right. To decrease key repeat delay, drag the <b>Delay</b> slider to the left.
Rate	To increase key repeat speed, drag the <b>Rate</b> slider to the left. To decrease key repeat speed, drag the <b>Rate</b> slider to the right.

## Profiles Tab

Use the **Profile** tab to load or remove Bluetooth services profiles. If a profile is not used, it can be removed to save memory.



Figure 6-53 BTE Explorer Settings - Profile Tab

1. Tap a check box next to the profile to load (activate).  
The Serial Port profile is always active and cannot be removed.
2. Tap **Select All** to select all profiles or tap **Deselect All** to deselect all profiles.
3. Tap **Apply** to activate the profiles and then **Close** to exit the application.

## System Parameters Tab



Figure 6-54 BTE Explorer Settings - System Parameters Tab

Table 6-18 System Parameters Tab Data

item	Description
Page Timeout	Sets the amount of time the MC75A searches for a device before moving on to the next device.
Link Supervision Timeout	Sets the amount of time that the MC75A will wait for a device to come back into range after it has gone out of range. If the device does not come back into range by the set time, the MC75A drops the connection.

## Miscellaneous Tab

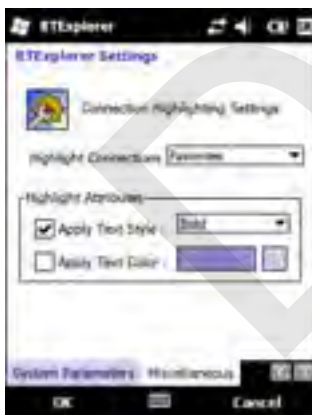


Figure 6-55 BTE Explorer Settings - Miscellaneous Tab

**Table 6-19** *Miscellaneous tab Data*

Item	Description
Highlight Connections	Select the connection type to highlight when connected. In the Wizard Mode, the only options are <i>Favorites</i> or <i>None</i> . In the Explorer Mode the options are <b>None</b> , <b>Tree View Only</b> , <b>List View Only</b> , or <b>Tree and List View</b> .
Apply Text Style	Select the text style to apply to the connection text.
Apply Text Color	Select the text color to apply to the connection text.

DRAFT

# Chapter 7 Accessories

## Introduction

MC75A accessories, listed below, provide a variety of product support capabilities.

**Table 7-1** MC75A Accessories

Accessory	Part Number	Description
<b>Cradles</b>		
Single Slot USB/Serial Cradle	CRD7X00-1000RR	Charges the MC75A main battery and a spare battery. Synchronizes the MC75A with a host computer through a USB connection.
Four Slot Ethernet Cradle	CRD7000-4000ER	Charges the MC75A main battery and connects the MC75A with an Ethernet network.
Four Slot Charge Only Cradle	CRD7X00-4000CR	Charges up to four MC75A devices.
VCD7000 Vehicle Cradle	VCD7X00-P000R	Installs in a vehicle and charges the MC75A main battery and a spare battery. Provides serial data communication between an MC75A and an external device.
<b>Chargers</b>		
Four Slot Battery Charger	SAC7X00-4000CR	Charges up to four MC75A spare batteries. Includes an MC75A shim.
Serial Charging Cable	25-102776-01R	Provides power to the MC75A and serial communication with a host computer.
USB Charging Cable	25-102775-01R	Provides power to the MC75A and USB communication with a host computer.
Charge Only Cable	25-95214-02R	Provides power to the MC75A.
Auto Charge Cable	25-70979-01R	Charges the MC75A using a vehicle's cigarette lighter.
<b>Cables</b>		

**Table 7-1** MC75A Accessories (Continued)

Accessory	Part Number	Description
DEX Cable	25-76793-01R	Connects the MC75A to a vending machine.
Modem Inverter Cables	25-70924-03R	Modem inverter cable.
O'Neil Printer Cable	25-91519-01R	Printer cable for O'Neil printers.
Zebra Printer Cable	25-91518-01R	Printer cable Zebra Road Warrior printers.
Zebra Printer Cable	25-91515-01R	Printer cable for Zebra QL printers.
<b>Miscellaneous</b>		
Magnetic Stripe Reader (MSR)	MSR7000-100R	Snaps on to the MC75A and adds magstripe read capabilities.
Debit Card Reader	DCR7X00-100R	Allows easy data capture with the swipe of a magnetic stripe card and personal identification number (PIN) entry using a numeric keypad.
Snap-on Mobile Payment Module with Chip and PIN	DCR7X00-200R	Allows easy data capture with magnetic stripe cards, EMV compliant Chip and PIN cards and personal identification number (PIN) entry using a numeric keypad.
Modem Dongle	MDM9000-100R	Provides modem connectivity.
Spare 3600 mAh lithium-ion battery	BTRY-MC7XEAB00	Replacement 3600 mAh battery.
Spare 4800 mAh lithium-ion battery	BTRY-MC7XEAB0H	Optional 4800 mAh battery.
Battery Kit for 3600 mAh battery	BTRY-KT-1R5X-MC7XR	Replacement 3600 mAh battery and battery door.
Battery Kit for 4800 mAh battery	BTRY-KT-2R5X-MC7XR	Replacement 4800 mAh battery and battery door.
Headset	50-11300-050R	Use in noisy environments.
Belt Mounted Rigid Holster	SG-MC70011110-01R	Clips onto belt to hold the MC75A when not in use.
Fabric Holster	SG-MC7521215-01R	Soft holder for added protection.
Stylus	Stylus-00002-03R	Replacement stylus (3-pack).
Wall Mounting Kit	8710-050006-01R	Use for wall mounting the four slot cradles.
Screen Protector	KT-67525-01R	Package of 3 screen protectors.
Software	-	<i>Enterprise Mobility Developer Kits (EMDKs)</i> , available at: <a href="http://support.symbol.com">http://support.symbol.com</a> .

## Single Slot USB/Serial Cradle

This section describes how to use a Single Slot USB/Serial cradle with the MC75A. For USB communication setup procedures refer to the *MC75A Integrator Guide*.



The Single Slot USB/Serial Cradle:

- Provides 5.4 VDC power for operating the MC75A.
- Synchronizes information between the MC75A and a host computer. Refer to the *MC75A Integrator Guide* for information on setting up a partnership between the MC75A and a host computer.
- Charges the MC75A's battery.
- Charges a spare battery.

## Charging the MC75A Battery

Connect the cradle to power. Insert the MC75A into the slot to begin charging.

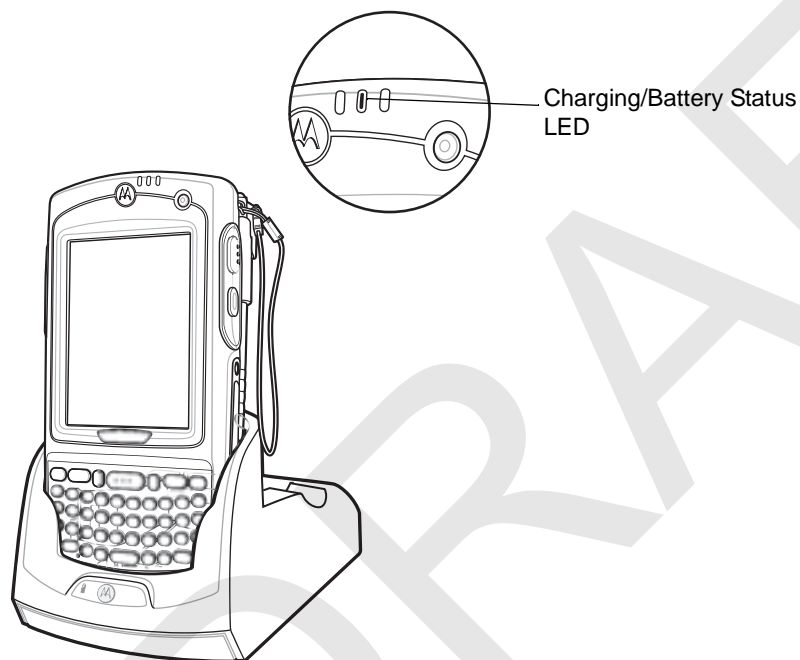


Figure 7-1 MC75A Battery Charging

## Charging the Spare Battery

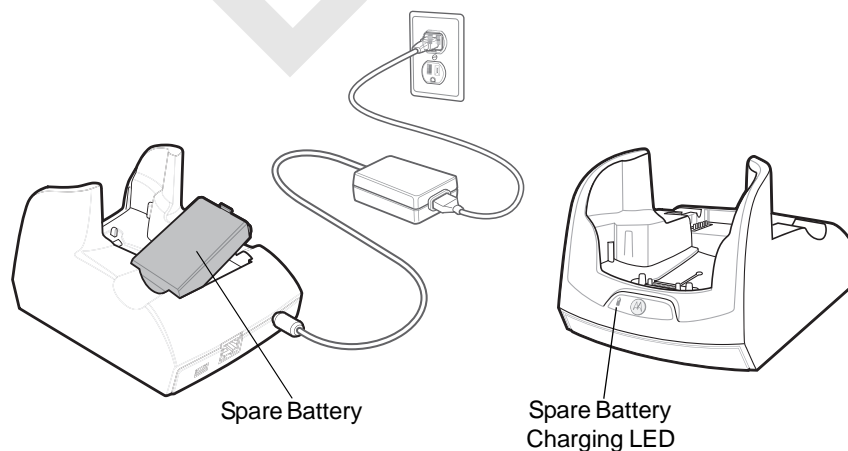


Figure 7-2 Spare Battery Charging

## Battery Charging Indicators

The Single Slot USB/Serial Cradle charges the MC75A's main battery and a spare battery simultaneously.

The MC75A's charge LED indicates the status of the battery charging in the MC75A. See [Table 1-2 on page 1-7](#) for charging status indications.

The spare battery charging LED on the cradle indicates the status of the spare battery charging in the cradle. See [Table 7-2](#) for charging status indications.

The 3600 mAh battery fully charges in less than five hours and the 4800 mAh battery fully charges in less than seven hours.

### Charging Temperature

Charge batteries in temperatures from 0°C to 40°C (32°F to 104°F). Charging is intelligently controlled by the MC75A.

To accomplish this, for small periods of time, the MC75A or accessory alternately enables and disables battery charging to keep the battery at acceptable temperatures. The MC75A or accessory indicates when charging is disabled due to abnormal temperatures via its LED. See [Table 1-2 on page 1-7](#) and [Table 7-2](#).

**Table 7-2** Spare Battery LED Charging Indicators

Spare Battery LED (on cradle)	Indication
Off	Battery is not charging; battery is not inserted correctly in the cradle; cradle is not powered
Slow Blinking Amber	Spare battery is charging.
Solid Amber	Charging complete.
Fast Blinking Amber	Charging error.