

PURETEK INDUSTRIAL CO., LTD

FCC I D : H52PT-6008

Multi-port Video Capture Card

Installation Guide

FCC Part 15

Operation is subject to the following two conditions:

1. This device may not cause harmful interference.
2. This device must accept any interference received including interference that may cause undesired operation.

This equipment has been tested and found to comply with the limits for a Class B digital device, pursuant to Part 15 of the FCC Rules. These limits are designed to provide reasonable protection against harmful interference when the equipment is operated in a residential installation. This equipment generates, uses, and can radiate frequency energy and if not installed and used in accordance with the instructions, may cause harmful interference to radio communications. However, there is no guarantee that the interference to radio or television reception, which can be determined by turning the equipment off and on, the user is encouraged to try to correct the interference by one or more of the following measures:

- Reorient or relocate the receiving antenna.
- Increase the separation between the equipment and receiver.
- Connect the equipment into an outlet on a circuit different from that to which the receiver is connected.
- Consult the dealer or an experienced radio/TV technician for help.

Shielded interface cables must be used in order to comply with emission limits.

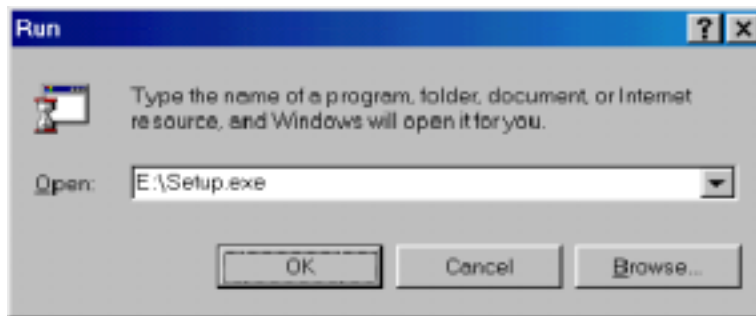
Changes or modifications not expressly approved by the party responsible for compliance could void the user's authority to operate the equipment.

- ▲ = Any changes or modifications not expressly approved by the grantee of this device could void the user authority to operate the equipment.

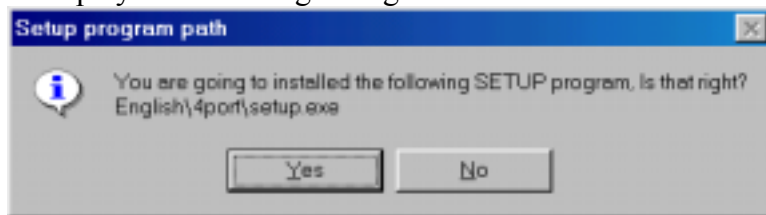
MultiCam Surveillance System Installation Guide

The MultiCam Surveillance System Installation is quite easy, what you need to do is:

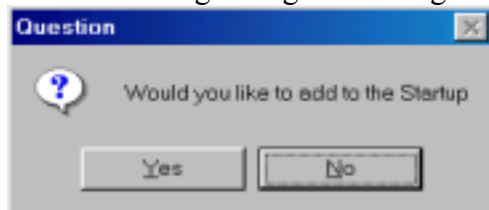
1. Insert the MultiCam Surveillance System CD into the CD-ROM driver.
2. Chose "Start" / "Run" in the Windows98 and enter the driver path containing the MultiCam Surveillance System "Setup.exe" program.



3. The Setup program will detect your Dungle and your Windows's language then display the following dialog:



4. If the dialog displays the right path and language that you want to install, please press YES. Otherwise, you may install the language you want, please reference the previous chapter for detailed information.
5. We recommend you to install "Multi-Cam Surveillance System" in the local PC, which connect to the video camera. "MultiCam Remote View" should be installed in another PC. If you need the remote view function, the local and remote PC should either have the modem or network installed. To install the "Remote View " in another PC, please reference the previous chapter for detailed information.
6. You may add the "MultiCam Surveillance System" to the Windows start up folder in the following dialog box during installation:



7. Follow the instruction to finish.
8. Start manual->Programs->MultiCam->MultiCam Surveillance System to run the GeoVision MultiCam Surveillance System

MultiCam Surveillance System Operation Guide

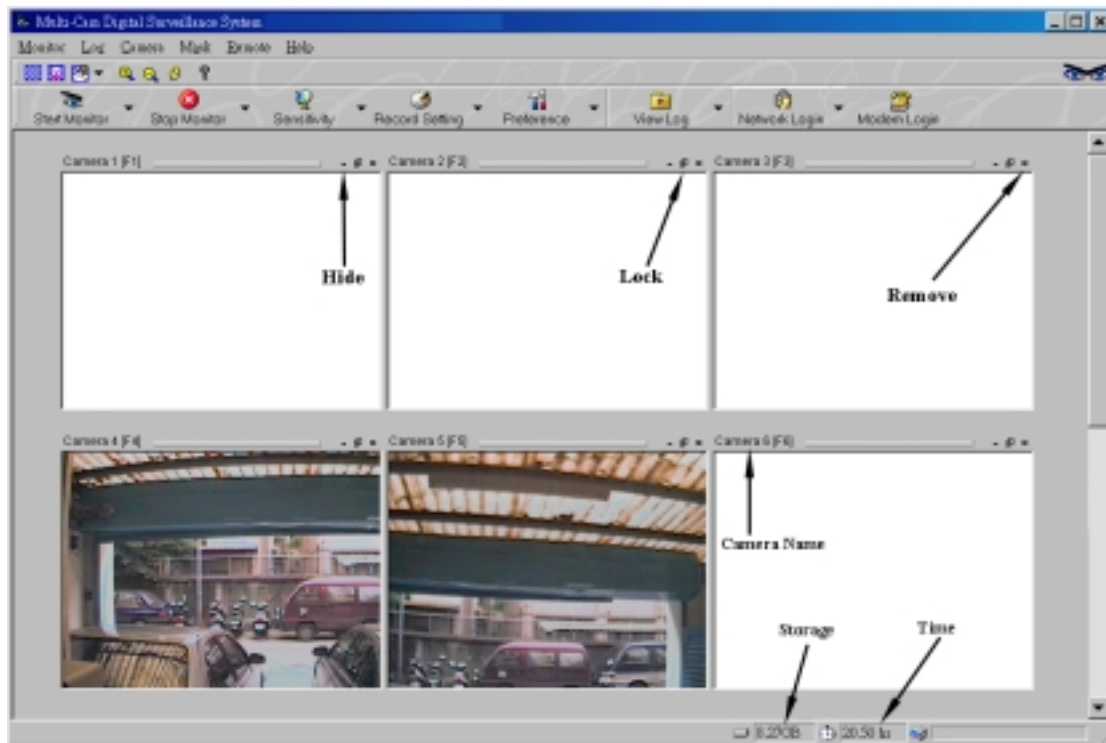
It is a PC-based surveillance system allows you to display/record simultaneously on your PC. This solution is as portable as a PC, yet more powerful and configurable than most permanently installed system. The system uses motion detection technology, only the moving objects will be recorded, save the time and cost of continuous recording as traditional surveillance system does.

System Requirements:

- Intel Pentium 200 or above, PentiumII 350 is recommended.
- Microsoft Windows 98.
- Video input: Different kinds of capture cards.
- Audio output: sound card (optional)
- Hard disk space: Plenty of disk storage for recording. At least 1GB per camera.

- System RAM: 64MB, 128MB is recommend.
- Display card: 16-bit high color or 24-bit true color.
- Monitor: 17 inch.
- Display Resolution: 1024 by 768 for 6Port/800*600 for 4Port
- Video Frame Size : Up to 320 *240 (Per camera)
- Network card. (optional)
- Modem and Telephone line.(optional)

Main Panel



Add/Remove Camera

There are individual windows display in the MultiCam Surveillance System, you can press the "x" icon to remove or use manual bar Camera function->Readd Camera. We recommend removing the camera window if there is no actually connected to the video camera.

Hide Camera



You can use the "-" icon to hide the camera, it is still functional but will not display the field of vision.

Storage/Time left display

Display the currently available free disk space for recording video clips. The time estimation is based on the image quality, frame rate.

Lock Camera (Zoom in/Zoom out)



  You can select any one of the camera to Zoom in or Zoom out, just press the icon between "-" and "x" or press the function key F1 to F6, F1 represent to camera 1. You can press the tool bar icon to zoom in or zoom out, or use the numeric keypad "-", "+". You can press the ESC key to back to the default display status.

Scan Camera

When the lock function is active, you may enable the scan function by press the "*" key in the numeric keypad or press the icon, you can also press the manual bar Camera function->Scan lock. Scan will automatically switch each existing camera every 3 seconds.

Start Monitor

You can start all the cameras or any one to start to observe and record. You can press from manual bar, tool bar icon or mouse right button to start any one of the installed cameras. If you have predefine your schedule, you can use Schedule Start to apply your schedule. Only Schedule Start will reference the schedule.

Stop Monitor

You can stop all the cameras or any one to stop observe and record. You can press from manual bar, tool bar icon or mouse right button to start any one of the installed cameras.