

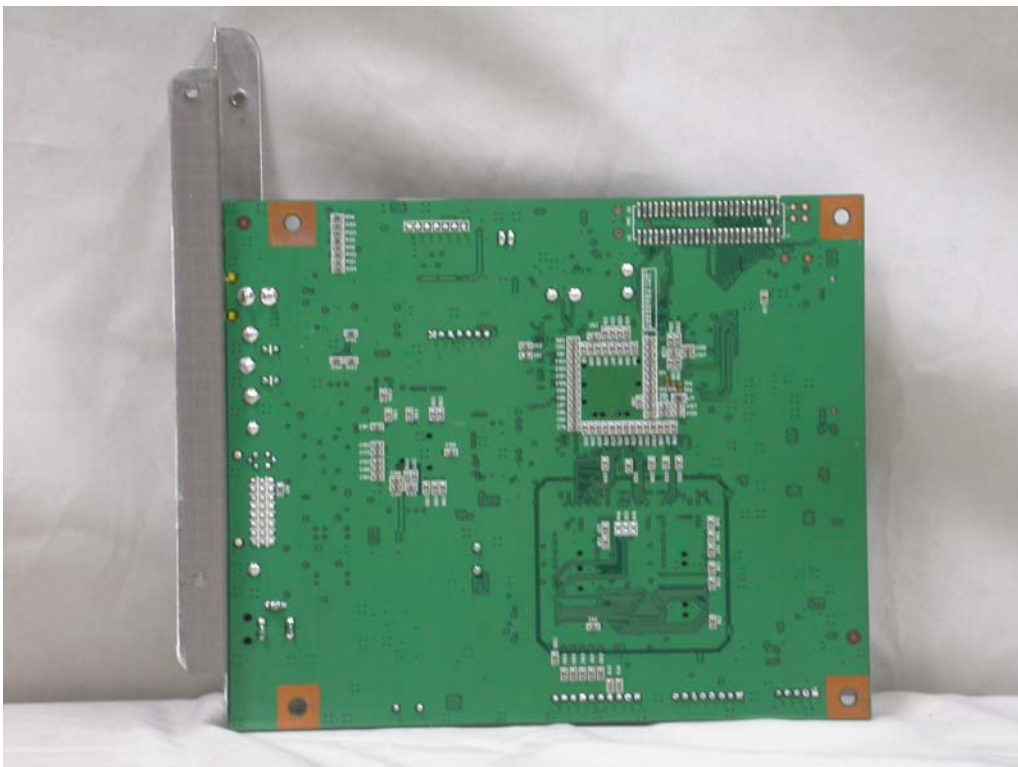
# Internal Photos

## 1. Main Board

### 1.1. Front



### 1.2. Rear



## 2. LCD

### 2.1. Front\_NEC



### 2.2. Rear\_NEC



### 2.3. Front\_SHARP



### 2.4. Rear\_SHARP

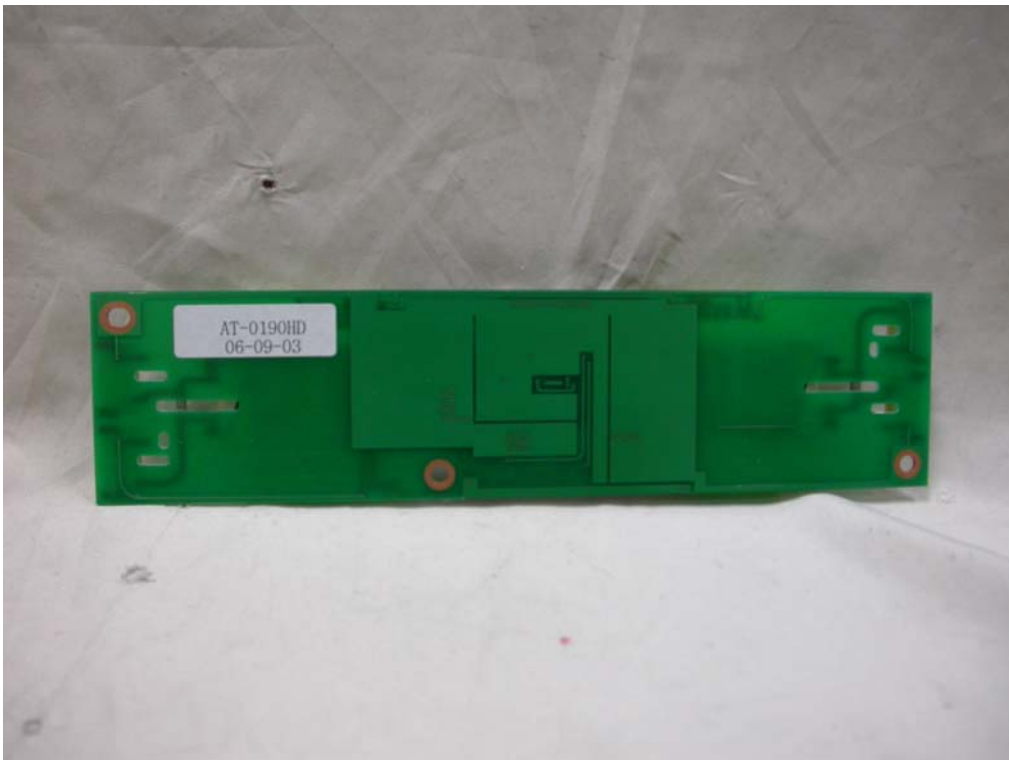


### 3. Inverter

#### 3.1. Front



#### 3.2. Rear





## 4. Control Board

### 4.1. Front

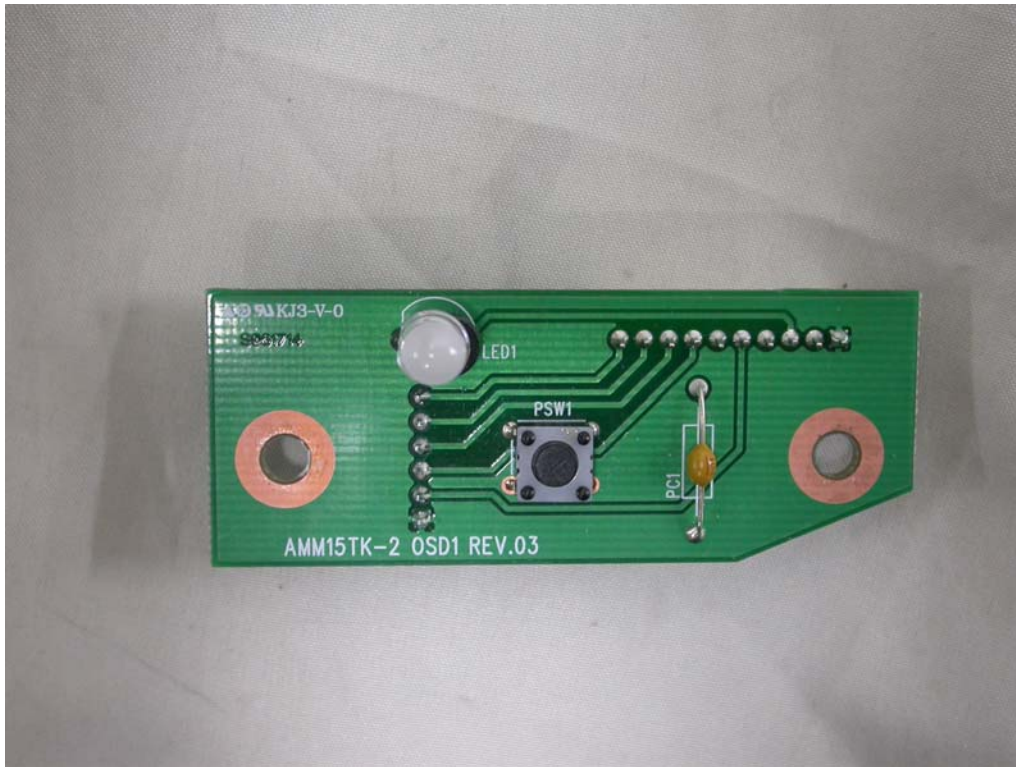


### 4.2. Rear

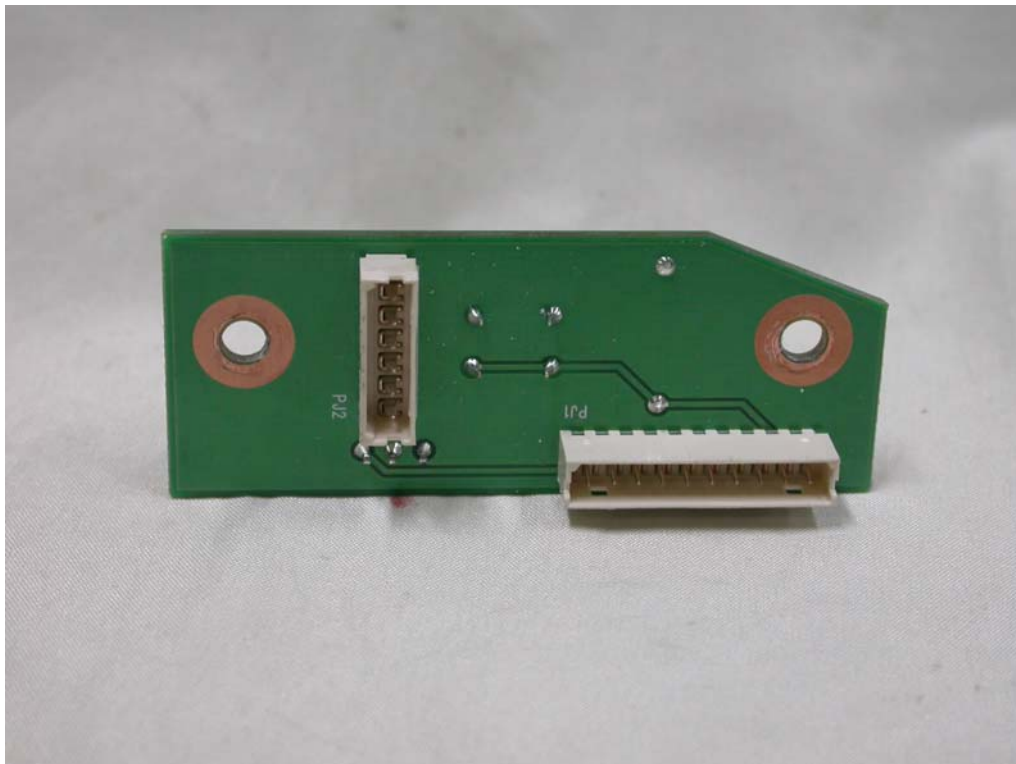


## 5. LED Board

### 5.1. Front



### 5.2. Rear



## 6. AC/DC Adapter

### 6.1. Front

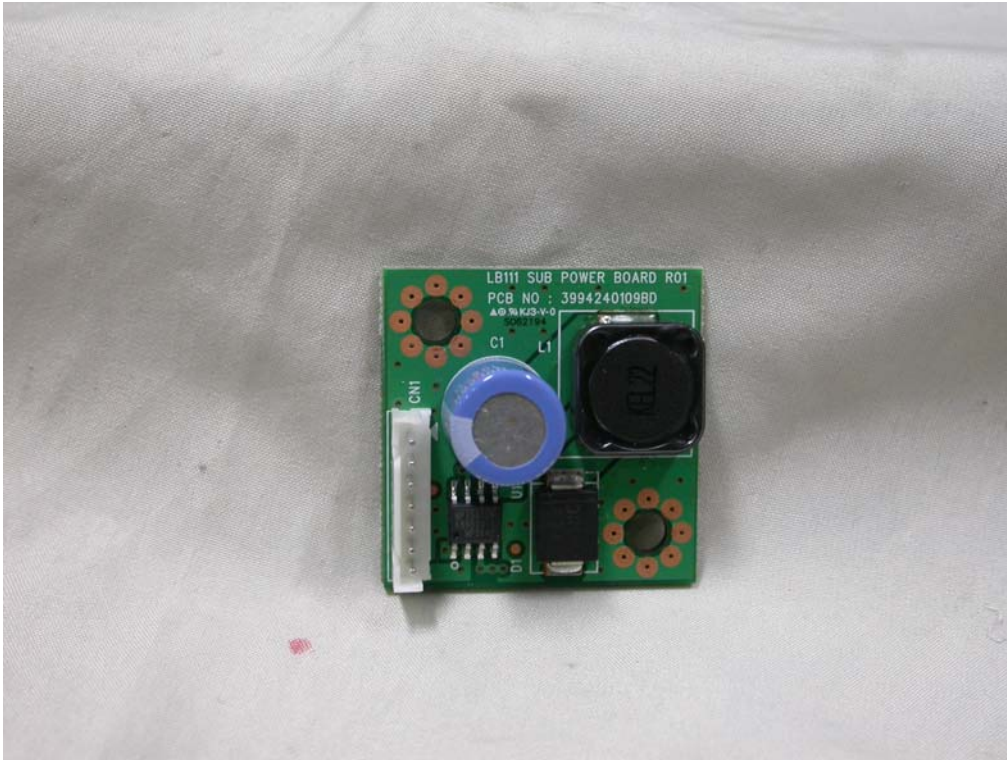


### 6.2. Rear



## 7. Sub Power Board

### 7.1. Rear



### 7.2. Rear

