

# NetCam 4

Installation Instructions



Eng

Philips  
Communication,  
Security & Imaging



**PHILIPS**

**IMPORTANT SAFEGUARDS**

1. **Read Instructions:** All the safety and operating instructions should be read before the unit is operated.
2. **Retain Instructions:** The safety and operating instructions should be retained for future reference.
3. **Heed Warnings:** All warnings on the unit and in the operating instructions should be adhered to.
4. **Follow Instructions:** All operating and use instructions should be followed.
5. **Cleaning:** Unplug the unit from the outlet before cleaning. Do not use liquid cleaners or aerosol cleaners. Use a damp cloth for cleaning.
6. **Power Sources:** This unit should be operated only from the type of power source indicated on the marking label. If you are not sure of the type of power supply you plan to use, consult your appliance dealer.
7. **Power-Cord Protection:** Power-supply cords should be routed so that they are not likely to be walked on or pinched by items placed upon or against them, paying particular attention to cords and plugs, convenience receptacles, and the point where they exit from the appliance.
8. **Power Line:** An outdoor system should not be located in the vicinity of overhead power lines or other electric light or power circuits, or where it can fall into such power lines or circuits.
9. **Overloading:** Do not overload outlets and extension cords as this can result in a risk of fire or electric shock.
10. **Object and Liquid Entry:** Never push objects of any kind into this unit through openings as they may touch dangerous voltage points or short-out parts that could result in a fire or electrical shock. Never spill liquid of any kind on the unit.
11. **Servicing:** Do not attempt to service this unit yourself as opening or removing covers may expose you to dangerous voltage or other hazards. Refer all servicing to qualified service personnel.

12. **Damage Requiring Service:** Unplug the unit from the outlet and refer servicing to qualified service personnel under the following conditions.
  - If liquid has been spilled, or objects have fallen into the unit.
  - If the unit has been exposed to rain or water.
  - If the unit does not operate normally by following the operating instructions, as an improper adjustment of other controls may result in damage and will often require extensive work by a qualified technician to restore the unit to its normal operation.
  - If the unit has been dropped or the cabinet has been damaged.
  - When the unit exhibits a distinct change in performance - this indicates a need for service.
13. **Replacement Parts:** When replacement parts are required, be sure the service technician has used replacement parts specified by the manufacturer or have the same characteristics as the original part. Unauthorized substitutions may result in fire, electric shock or other hazards.
14. **Safety Check:** Upon completion of any service or repairs to this unit, ask the service technician to perform safety checks to determine that the unit is in proper operating condition.

**FCC INFORMATION**

**Caution:** Any changes or modifications to construction of this device which are not expressly approved by the party responsible for compliance could void the user's authority to operate the equipment.

**Note:** This equipment has been tested and found to comply with the limits for a Class B digital device, pursuant to part 15 of the FCC Rules. These limits are designed to provide reasonable protection against harmful interference in a residential installation. This equipment generates, uses and can radiate radio frequency energy and, if not installed and used in accordance with the instructions, may cause harmful interference to radio communications. However, there is no guarantee that interference to radio or television reception, which can be determined by turning the equipment off and on, the user is encouraged to try to correct the interference by one or more of the following measures:

- Reorient or relocate the receiving antenna.
- Increase the separation between the equipment and receiver.
- Connect the equipment into an outlet on a circuit different from that to which the receiver is connected.
- Consult the dealer or an experienced radio/TV technician for help.

**SAFETY PRECAUTIONS**

This label may appear on the bottom of the unit due to space limitations.

|   |  |   |
|---|--|---|
|    | <b>CAUTION</b><br>RISK OF ELECTRIC SHOCK. DO NOT OPEN! |  |
| <b>CAUTION: TO REDUCE THE RISK OF ELECTRICAL SHOCK, DO NOT OPEN COVERS. NO USER SERVICEABLE PARTS INSIDE. REFER SERVICING TO QUALIFIED SERVICE PERSONNEL.</b> |  |   |



The lightning flash with an arrowhead symbol, within an equilateral triangle, is intended to alert the user to the presence of un-insulated "dangerous voltage" within the product's enclosure that may be of sufficient magnitude to constitute a risk of electric shock to persons.



The exclamation point within an equilateral triangle is intended to alert the user to presence of important operating and maintenance (servicing) instructions in the literature accompanying the appliance.

**ATTENTION: INSTALLATION SHOULD BE PERFORMED BY QUALIFIED SERVICE PERSONNEL ONLY IN ACCORDANCE WITH THE NATIONAL ELECTRICAL CODE OR APPLICABLE LOCAL CODES.**



Attention: Installation should be performed by qualified service personnel only in accordance with the National Electrical Code or applicable local codes.

**TABLE OF CONTENTS**

IMPORTANT SAFEGUARDS .....2  
 FCC INFORMATION .....3  
 SAFETY PRECAUTIONS .....4  
 1 Introduction .....7  
 1.1 Description .....7  
 1.2 Unpacking .....8  
 1.3 NetCam4 Rear View and Descriptions .....8  
 2 Installation .....11  
 2.1 Setup .....11  
 2.1.1 Connecting .....11  
 2.1.2 Location .....11  
 2.2 Installing NetCam4 Setup Program .....12  
 2.3 Assigning IP Address and Starting Configuration .....12  
 2.4 Configuring NetCam4 .....13  
 2.4.1 Fast Configuration .....13  
 2.5 Assigning IP Address with ARP command .....14  
 3 Accessing NetCam4 Homepage & Monitoring Real-time Image .....16  
 3.1 Starting Web browser .....16  
 3.2 Installing NetCam4 Plug-in .....16  
 3.3 Login page and various viewers in NetCam4 homepage .....17  
 3.3.1 Real-time monitoring through default viewer .....17  
 3.3.2 Changing with other image viewer .....18  
 3.3.3 Accessing administrator's page .....19  
 3.3.4 More Services .....19  
 3.3.5 Download .....19  
 3.3.6 Help .....19  
 3.3.6 Placing a company logo and hyper-linking .....20  
 3.3.7 Real-time monitoring through normal viewer .....20  
 3.3.8 Real-time monitoring through simple viewer .....23  
 3.3.9 Real-time monitoring through server-push viewer .....24  
 3.3.10 Real-time monitoring through java applet viewer .....25  
 3.3.11 Real-time monitoring through snapshot viewer .....26  
 4 Configuring Administrator's Options .....27  
 4.1 Login .....27  
 4.2 Configuring Administrator's Condition at Homepage .....28  
 4.2.1 System Configuration .....28  
 4.2.2 User Configuration .....29  
 4.2.3 Network Configuration .....29  
 4.2.4 Dynamic IP Registration Service for ISDN, XDSL Users .....30

**I INTRODUCTION**

NetCam4 is an Internet-based high resolution digital network camera. It connects directly to an Ethernet network and provides live motion color pictures over the Internet, using image compression format.

**1.1 Description**

NetCam4 is a microprocessor-based device that contains a digital color camera, web server functionality, optimized hardware for image compression, and physical Ethernet connection. You simply provide power and connect LAN cable to the NetCam4.

Images are generated in Wavelet format. Wavelet progressively generates pictures from low rates of resolution, so reducing the waiting time for users. The only software required is Netscape Navigator 4.x or above and Microsoft Internet Explorer 4.x or above.

Supporting TCP/IP networking, SMTP e-mail, HTTP and other Internet-related protocols; the NetCam4 can be used in mixed operating system environments, such as, Windows, UNIX, Macintosh and OS/2. It integrates easily into other WWW/Intranet applications.

Using a standard Web browser, you can configure and manage NetCam4 directly from its own Web pages. And, when a new firmware release becomes available, you can simply upgrade all of your NetCam4 camera products remotely over the network.

**NetCam4**

**Section I**

**1.2 Unpacking**

Unpack carefully. This is electronic equipment and should be handled with care to prevent damage to the unit. Check for the following items:

- NetCam4 - Web Camera Server
- AC Adapter & Power cable DC 12V, 1A
- Lens 8mm, f 1.3, C mount, already assembled
- 1 m crossover cable (Red)
- 2 m direct cable (White)
- Plug & cable clamp for DB-15
- Software
- Manual

Note: The shipping carton is the safest container in which to transport the unit. Save it and all packing materials for future use.

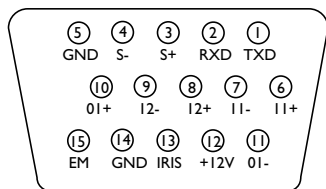
**1.3 NetCam4 Rear View and Descriptions**



**NetCam4**

**Section I**

| Pin | Connection | Function                       |
|-----|------------|--------------------------------|
| 1   | TXD        | RS-232 transmit.               |
| 2   | RXD        | RS-232 receive.                |
| 3   | S+         | NetCam4 RS-485. (half-duplex). |
| 4   | S-         | NetCam4 RS-485. (half-duplex). |
| 5   | GND        | Ground                         |
| 6   | Input 1 +  | Isolated input port            |
| 7   | Input 1 -  | Isolated input port            |
| 8   | Input 2 +  | Isolated input port            |
| 9   | Input 2 -  | Isolated input port            |
| 10  | Output 1 + | SSR output port                |
| 11  | Output 1 - | SSR output port                |
| 12  | 12V +      | Power Supply                   |
| 13  | IRIS       | Not used                       |
| 14  | GND        | Ground                         |
| 15  | EM         | Not used                       |



DB-15 port (RS-232 and RS-485)



**NetCam4**

**Section I**

| Switch     | Function   |
|------------|--|
| OUT/IN     | Configures NetCam4 to accept input (IN) or output (OUT) signal to the BNC connector. |
| 1, 2, 3, 4 | 75 Ω (ON) or High impedance (OFF) (Loop through).                                    |



DIP Switches

## **2 INSTALLATION**

### **2.1 Setup**

- Connect Ethernet and Power to NetCam4 on local network for configuration.
- Install the setup program for NetCam4.
- Assign an IP address to NetCam4 and configure administrator's condition.
- Configure user's condition.
- Locate NetCam4, and re-connect power and Ethernet.
- Adjust the Focus.

#### **2.1.1 Connecting**

- Connect Ethernet line to the Ethernet port in the rear.
- Connect the power supply to a power supply port in the rear.
- Confirm that the green LED of the Ethernet port blinks

#### **2.1.2 Location**

- Place NetCam4 appropriately for your purpose

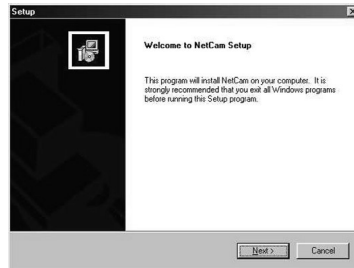
Warning: Do not expose the camera lens to direct sunlight. When you operate NetCam4 in the glaring light, we recommend using an auto iris lens.

**NetCam4**

**Section 2**

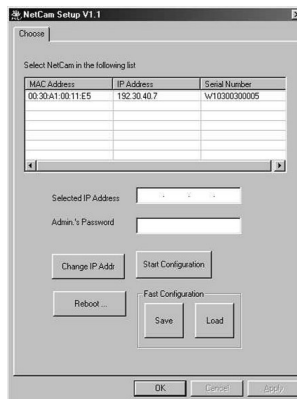
**2.2 Installing NetCam4 Setup Program**

1. Insert the supplied CD into your CD-ROM drive and copy 'NetCam4.exe' to your PC. Locate and double click. Follow the screen instructions.



**2.3 Assigning IP Address and Starting Configuration**

- You can only setup a NetCam4 that is connected on a local network or direct via the Red-cross cable.
- When the setup program is executed, the panel shows every NetCam4 connected at the local network.
- Choose the NetCam4 that you want to assign an IP address or you want to configure. When the NetCam4 is selected, an IP address is displayed.
- Enter a password in the 'Admin's Password' box. (Default password is 'admin').
- To change the IP address, click the 'Change IP Addr' button.



**NetCam4**

**Section 2**

- Enter the new IP address and confirm it with the 'OK' button.
- If NetCam4 has a problem, you can reboot by clicking "Reboot".



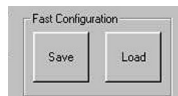
**2.4 Configuring NetCam4**

- After assigning a new IP address to the NetCam4, you may configure the administrator's options. Click 'Start Configuration' button, and you will be connected to the Administrator pages in the NetCam (see Chapter 4).



**2.4.1 Fast Configuration**

- If you want another NetCam4 with the same setup, you can use 'Fast Configuration'.
- Using the 'Load' button, you can use the saved configuration of another NetCam4. However, some information such as; 'Serial Number', 'Date & Time' and 'IP configurations' need to be setup independantly. You should configure 'Date & Time' and 'IP Configuration' again with setup program. 'Serial Number' cannot be changed.



**To save:**

After setup, close NetCam4 homepage.

- Click 'Save' button.
- Save the information (select a suitable directory and file name).

**To Load:**

- Select the directory and file name of the saved NetCam 4.
- Click the 'open' button and click 'ok' to confirm.

### 2.5 Assigning IP Address with ARP command

If you fail to assign an IP address with the setup program, carry out the process with ARP command.

NetCam4 IP address = IP address to be assigned to the NetCam4.

NetCam4 Ethernet address = MAC printed on the bottom of the NetCam4.

My PC IP address = IP address of the Network Interface Card in your PC>

Note: The NetCam4 and PC IP addresses must be within the same IP address class.

1. Using ARP in Windows 98 and NT
  - Start a DOS window and type the following commands.

```
arp -s <NetCam4 IP address> <NetCam4 _____ address>
ping -t <NetCam4 IP address>
```

- Example

```
arp -s 200.243.232.178 00-40-8c-10-00-86
ping -t 200.243.232.178
```

2. Using ARP in Windows 95
  - Start a DOS window and type the following commands.

```
arp -s <NetCam4 IP add.> <NetCam4 Ethernet add.> <my PC IP add.>
ping <NetCam4 IP address>
```

- Example

```
arp -s 200.243.232.178 00-40-8c-10-00-86 200.243.232.130
ping 200.243.232.178
```

**NetCam4**

**Section 2**

3. Verifying installation

After completion, the following message (or similar) will be displayed after the ping command:

```
Request timed out
:
Request timed out
Reply from 200.243.232.178: bytes=32 time=2ms TTL=255
Reply from 200.243.232.178: bytes=32 time=2ms TTL=255

Ping statistics for 200.243.232.178:
    Packets: Sent = 4, Received = 4, Lost = 0 (0% loss),
Approximate round trip times in milliseconds:
    Minimum = 1ms, Maximum = 2ms, Average = 1ms
```

- If you cannot receive the reply by the 'ping' command, try again by pressing 'F3' and 'Enter' keys again. Normally 'Request timed out' messages appear 7 times before you receive proper reply.
- If you succeed in utilizing the above commands, you will receive a continuous connection. Stop the process by pressing <Ctrl>+<C> keys.
- If the statistic shows '100% loss', you should check that the network line and connection status are stable; the IP address which is assigned to NetCam4; and whether a PC has the same local IP address as the NetCam4. (Same local IP address of C grade network means that the first 3 numbers are same but the fourth is different. For example 203.243.232.111 and 203.243.232.112 are the same local network IP addresses).

### 3 ACCESSING NETCAM4 HOMEPAGE & MONITORING REAL-TIME IMAGE

You can access the NetCam4's own web pages through any standard Web browser.

#### 3.1 Starting Web browser

```
http://<NetCam4 IP address>/
```

- Start your web browser and enter your NetCam4 IP address.

```
http://200.243.232.178/
```

Example

NetCam4 simultaneously supports up to 100 users. Any additional user will receive the message '*Server is full*'.

#### 3.2 Installing NetCam4 Plug-in\*

Netscape User: To see the image transferred from NetCam4, initially install the NetCam4 Plug-in. When you connect the NetCam4 for the first time or you have an old Plug-in version, you have to download it. In the Plug-in Download screen click '*Download Plug In*' Then you click '*Grant*' and '*Install*' buttons respectively when prompted. The Plug-in Download screen is accessible from the various viewers and log-in screens.

MS Explorer User: For a MS Explorer User, Active-X Control is prepared. It will be installed as soon as you connect to NetCam4. For Active-X installation on your PC, just click '*Yes*' to the question. If you cannot see the images, you should check if Active-X Control file is installed correctly, located in the *C:\Windows\Download Program Files*. If the NetCam4 Control file is not installed, carry out the installation procedure again. If the file is already installed but image is not seen, remove the file and re-install it.

- \* The plug-in and active-X are licenced by WebGate Inc. and approved by Verisign.

Note: Program installation takes less than 1 minute. Do not click any button until the 'Active-X Control' installation is completed.

**3.3 Login page and various viewers in NetCam4 homepage**

Login Page: Enter your name and password to log in (max 9 characters). Default user's ID and password are 'guest'. The administrator can change them at Admin page.

Name :   
 Password :

There are 6 viewing options. An administrator may set 3 different viewers as main viewers. Users may monitor real-time images via these main viewers.

The 6 viewers are (default viewer, normal viewer, simple viewer may be set as main viewers):

- Default viewer
- Normal viewer
- Simple viewer
- Server-Push viewer
- Java Applet viewer
- Snapshot viewer

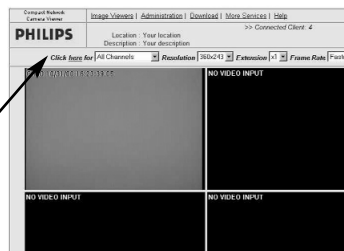
**3.3.1 Real-time monitoring through default viewer**

The default view is shown. The user may select 5 other viewing options.

Real-time monitoring  
 To setup the channel, resolution, expansion, and frame rate select the respective window box.

Channel selection: Select a single channel or all 4 channels.

Resolution: Select the resolution (720x486, 720x243, 360x243, 180x121, 90x60). The higher the resolution, the slower the transmission rate.





**Extension:** Select the image size of 1X to 4X. Extension (2X to 4X) does not increase the image's resolution, but rather enlarges its size. Therefore, the quality of extended image is not as clear as original image.

**Frame rate:** Select the image transmission speed. (Transmission speed depends much on network line's capacity and PC performance). NetCam4 transmits maximum 30 frames per second, and total frames transmitted by all 4 channels cannot surpass the maximum rate of 30 fps.

**3.3.2 Changing with other image viewer**

The default viewer can be changed to any other view option (normal viewer, simple viewer, server-push viewer, java applet viewer, and snapshot viewer).

|               |
|---------------|
| Simple Viewer |
| Normal Viewer |
| Others        |

**Normal viewer and simple viewer,** a menu is displayed where you can utilize various buttons for such as pan/tilt/zoom control, gray-image transmission mode, progressive transmission mode, etc.

**Other viewers,** The server-push viewer, java applet viewer, and snapshot viewer menu options are displayed. Server-push viewer allows you to view images when the NetCam4 is connected on the network with a firewall. Java applet viewer is for a computer that dose not utilize MS Windows OS such as Macintosh computer, etc. Snapshot viewer allows you to capture a frozen image.

| Service Items      | Key Features  |
|--------------------|---|
| Snapshot           | <ul style="list-style-type: none"> <li>Client-pull technology using CGI, HTML</li> <li>Image file extension - *.eye</li> <li>Automatically refresh the page</li> <li>Easy customizing</li> <li>You can make your home page which have new image whenever user connects</li> <li>Supported browsers - Netscape 4.5 or above, IE-explorer 4.0 or above</li> </ul>   |
| Server-Push        | <ul style="list-style-type: none"> <li>Server-push technology using MjLisp CGI</li> <li>MIME Type - application/webbyte</li> <li>Image Resolution Control - 720/436, 720/243, 360/243, ...</li> <li>Frame Rate Control - Fastest, 10 fps, 5fps, ...</li> <li>Video input selection - internal cam/external cam</li> <li>Gray mode - 24bits color or gray-color</li> <li>SingleShot mode - snapshot supported</li> <li>Security - unsecured/secure mode supported</li> <li>Supported browsers - Netscape 4.5 or above, IE-explorer 4.0 or above</li> </ul> |
| Java Applet Viewer | <ul style="list-style-type: none"> <li>Client/Server technology</li> <li>Image Resolution Control - 720/436, 720/243, 360/243, 180/120, 90/60</li> <li>For Macintosh, UNIX system users</li> <li>Depends on Java VM in system or web browser</li> <li>Supported browsers - Netscape 4.5 or above, IE-explorer 4.0 or above</li> </ul>   |

**NetCam4**

**Section 3**

**3.3.3 Accessing administrator's page**

Click '*Administration*' menu, to access the login page for the administrator options.

| **Administration** |

**3.3.4 More Services**

Click the respective button to access the additional services. Information is provided in the respective chapters

| **More Services** |

|   |   |
|---|---|
| Simple Image Viewer / Normal Image Viewer | <ul style="list-style-type: none"> <li>▶ Client/Server technology</li> <li>▶ Image Resolution Control - 720x486, 720x243, 360x243, 180x120, 90x60</li> <li>▶ Frame Rate Control - Fastest, ...</li> <li>▶ Pan/Tilt/Zoom Control</li> <li>▶ Gray mode - 24bits color or gray-color</li> <li>▶ Progressive mode - progressively updated for partial images</li> <li>▶ SingleShot mode - snapshot supported</li> <li>▶ Quality (DQ) supported</li> <li>▶ Security - secure mode supported</li> <li>▶ Simple Image Viewer - for fast downloading the page</li> <li>▶ Supported browsers - Netscape 4.5 or above, IE-Explorer 4.0 or above</li> </ul>  |
| Administration                            | <ul style="list-style-type: none"> <li>▶ Web-Based Administration of NetCam configuration</li> <li>▶ User Configuration - add users, ...</li> <li>▶ System Configuration - date/time setting, ...</li> <li>▶ Video Configuration - calibrating video parameters, ...</li> <li>▶ Network Configuration - IP/Mask/DNS address setting</li> <li>▶ Security Configuration - IP-filtering and Image Encryption for high security</li> <li>▶ Pan/Tilt/Zoom Configuration</li> <li>▶ Alarm Configuration - select pre-alarm/post-alarm parameters, ...</li> <li>▶ Serial Port Configuration - set serial control parameters for Pan/Tilt/Zoom.</li> <li>▶ Customizing - For changing http's port, ...</li> <li>▶ Application Configuration                         <ul style="list-style-type: none"> <li>▶ E-Mail                                 <ul style="list-style-type: none"> <li>▶ Auto-Emailing, events triggered</li> <li>▶ Captured images are attached to an mail</li> <li>▶ Periodic transfer supported for monitoring</li> <li>▶ Supported events: Sensor-Input-Detection (SID), Motion Detection (MD)</li> </ul> </li> <li>▶ FTP                                 <ul style="list-style-type: none"> <li>▶ Auto-FTP, event triggered</li> <li>▶ Captured images are transferred to the specified FTP server</li> <li>▶ Periodic transfer supported for uploading to another web server.</li> <li>▶ Supported events: Sensor-Input-Detection (SID), Motion Detection (MD)</li> </ul> </li> </ul> </li> </ul> |

**3.3.5 Download**

NetCam4 compresses images using Wavelet algorithm. You need to install 'Netscape Plugin'. Click the '*Download*' menu, and follow the instructions.

| **Download** |

**3.3.6 Help**

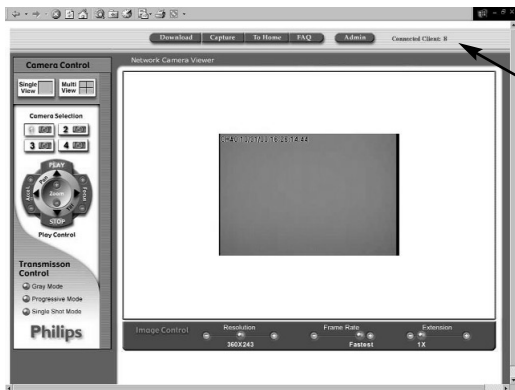
You may look up explanations on NetCam4's functions and features by selecting the '*Help*' menu. Click 'FAQ' (frequently asked questions) to solve problems confronted during installation or running NetCam4.

| **Help** |

### 3.3.6 Placing a company logo and hyper-linking

You can place your company's logo onto the viewed image. (Refer to Chapter VII for detailed information)

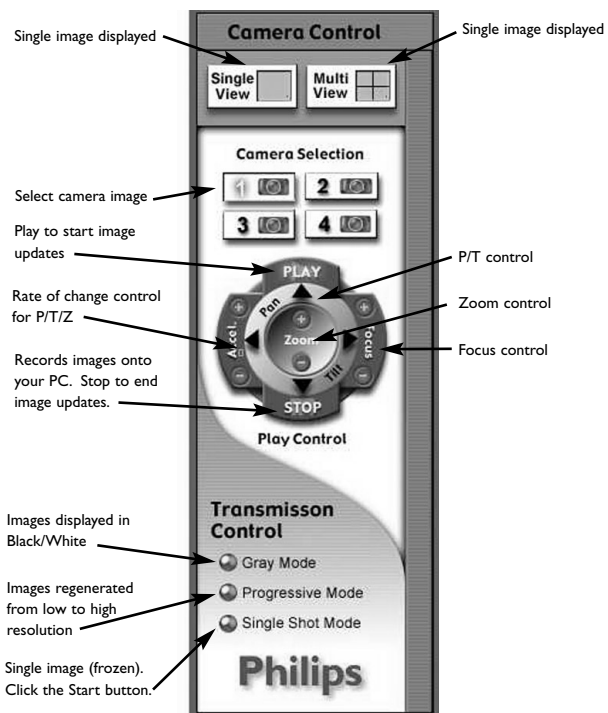
### 3.3.7 Real-time monitoring through normal viewer



Number of connected users

When more than 100 users, the 101st user cannot view images until another user logs out.

After Login, real-time images are displayed.



**NetCam4**

**Section 3**



Resolution: You can choose 5 resolution levels.

Frame Rate: You can choose the transmission speed.

Extension: You can see images in different sizes 1X to 4X..



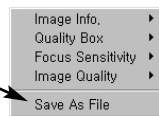
Download: Save the image file to the specified location.

Capture: Save a frozen image to file. You can also capture a still image by placing your mouse on the picture, click the right button of your mouse. Click the button 'Save As File'

To Home: Return to the Default viewer.

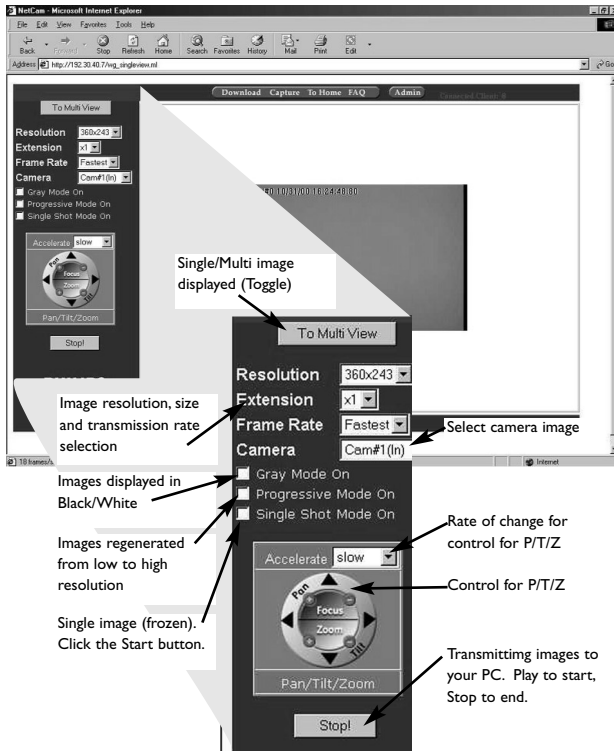
FAQ: Access the frequently asked questions information.

Admin: Access the administration options.



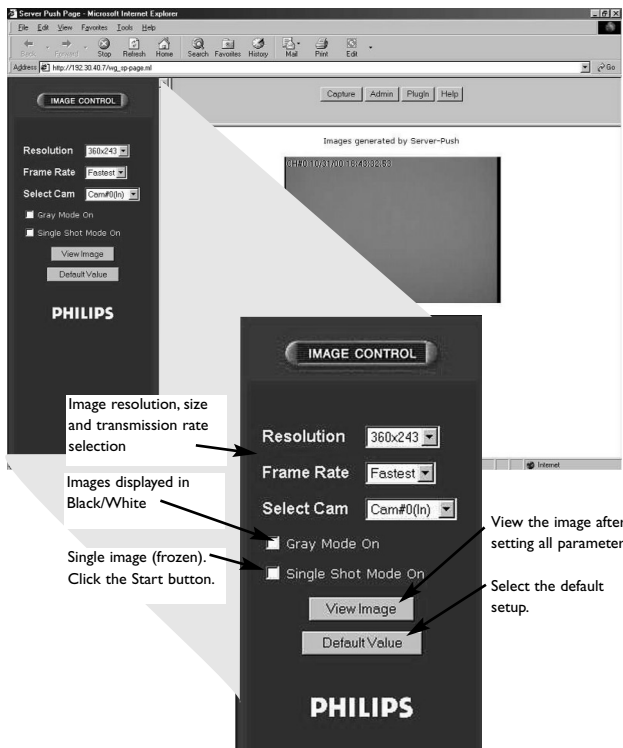
**3.3.8 Real-time monitoring through simple viewer**

The simple viewer has the same functional menus as normal viewer. It is designed for very simple images (normally no movement) so that its size is decreased dramatically to overcome low speed transmission. (There is no difference between normal viewer and simple viewer in transmitting real-time images).



### 3.3.9 Real-time monitoring through server-push viewer

If there is a firewall on the network where NetCam4 is connected, you can access the NetCam4 through the server-push viewer to monitor real-time images.



**NetCam4**

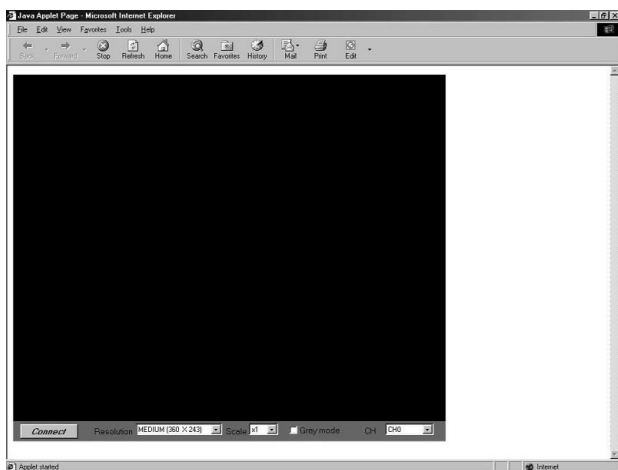
**Section 3**

**3.3.10 Real-time monitoring through java applet viewer**

The Java applet viewer is for the users who access NetCam4 through a computer that does not utilize MS Windows OS such as a Macintosh computer, etc. Java applet viewer is run with java virtual machine that is installed on User's computer.

- Enter ID
- Enter Password

Name :   
Password :



**Connect** Resolution **MEDIUM (360 X 243)** Scale **x1**  **Gray mode** CH **CH0**

View the images after defining all parameters    Select the resolution    Select the image size    Select Black/White image mode    Select channel to be viewed

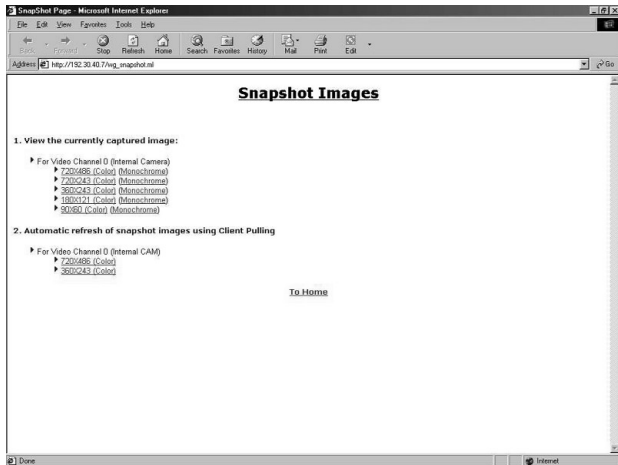


**3.3.1.1 Real-time monitoring through snapshot viewer**

Snapshot viewer allows you to view a frozen image before monitoring real-time motion pictures through the other viewers.

Only the video from the internal CCD (Ch0) or from the first external camera (Ch1, providing an external camera is connected) can be viewed.

There are two methods of snapshots. One is to view a single frozen image, the other is to view a changing image every 2 seconds (only available for video from internal CCD (Ch0)).



## 4 CONFIGURING ADMINISTRATOR'S OPTIONS

### 4.1 Login

The Administrator option allows system configuration. Access to the Administrator option is available in many ways.

|   |  |
|---|--|
| Admin. ID :   | <input type="text" value="admin"/>     |
| Password :  | <input type="password" value="admin"/> |
| <input type="button" value="Login"/> <input type="button" value="Reset"/> |  |

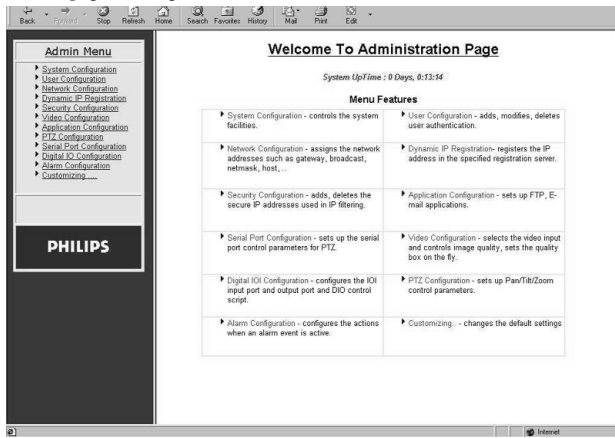
#### Accessing through setup program

Click on MAC address of NetCam4. Key in the administrator's password and then click 'Start Configuration' button. When you click 'Start Configuration' button, the setup program automatically connects you to Admin page of NetCam4 Homepage. (For more detailed information, refer to Chapter V 'Assigning IP address and Configuring Administrator's Condition').

#### Accessing through Web browser

On the Web browser, key in IP address of NetCam4 that is being configured. At the login page, key in administrator's ID and password to access the Admin page.

The administrator may also access NetCam4 real-time image viewer, then access to Admin page clicking 'Admin' button.



Both default administrator's ID and password are set as 'admin', and administrator may change them (max 9 characters) at the Admin page.

**4.2 Configuring Administrator's Condition at Homepage**

**4.2.1 System Configuration**

Set date & time, name, location, and description of your NetCam4. The model and serial number appear automatically.

| Parameter Name  | Parameter Value  |
|---|--|
| NetCam Name   | NetCam Name  |
| Chassis Version   | E104   |
| Serial Number   | W10300300005   |
| S/W Version   | 2.2.5.1.1.0  |
| Installation Location   | Your location  |
| Additional Description  | Your description   |
| Video Channel Selection for CAM#1   | <input checked="" type="radio"/> INTERNAL(CH#0) <input type="radio"/> EXTERNAL(CH#1) |
| NetCam Current Date&Time  | [2000-10-31 16:51:22] (yyyy-mm-dd hh:mm:ss)  |
| System(PC) Current Date&Time  | [2000-10-31 16:51:18] <input type="button" value="Time Synchronization"/>            |
| Manual Date&Time Setting  | [2000-10-31 16:51:12] <input type="button" value="Time Synchronization"/>            |
| Administrator's Email Address   | yours@your.org   |
| Initializing Flash Information  | <input type="button" value="Factory Setting"/>                                       |
| Rebooting NetCam  | <input type="button" value="Rebooting"/>   |
| <input type="button" value="Confirm"/> <input type="button" value="Reset"/> <input type="button" value="Help"/> |  |

**Video Channel Selection for CAM#1:** You may decide to use one external CCD camera connecting to the port of 'Ch1' in the rear of NetCam4 or use self-contained CCD module of NetCam4. Note that this menu is only for the first port in the rear of NetCam4 with name 'CH1'.

**Date & Time:** There are three date & time menus.

- 'NetCam4 Current Date & Time', the date and time set in NetCam4 appears.
- 'System(PC) Current Date & Time', the same date and time set on the administrator's PC appears. You may copy the system (PC)'s date and time into NetCam4 by clicking 'Time Synchronization' button.
- 'Manual Date & Time Setting', you may set date and time. To synchronize manually, set date and time with 'NetCam4 Current Date & Time' by clicking 'Time Synchronization' button.

**NetCam4**

**Section 4**

*Administrator's E-mail Address:* Set the administrator's e-mail address.

*Initialize Flash Info:* The administrator initializes almost all the information saved on flash memory. However 'Date & Time', 'Model', and 'Serial Number' in 'System' menu, 'IP configuration' in 'Network' menu, and all items in 'Video' menu are not initialized.

*Rebooting:* If NetCam4 has any problem, you can reboot without switching off the power supply. This button works as on/off switch.



**4.2.2 User Configuration**

| User ID       | User Account | Password                 | Re-Typed Password        | Access Rights |
|---------------|--------------|--------------------------|--------------------------|---------------|
| Administrator | admin        | <input type="password"/> | <input type="password"/> | All           |
| User 1        | guest        | <input type="password"/> | <input type="password"/> | None          |
| User 2        | guest        | <input type="password"/> | <input type="password"/> | None          |
| User 3        | guest        | <input type="password"/> | <input type="password"/> | None          |
| User 4        | guest        | <input type="password"/> | <input type="password"/> | None          |
| User 5        | guest        | <input type="password"/> | <input type="password"/> | None          |

Allows you to configure IDs and passwords of an administrator and 5 users. If you want to open your NetCam4 to everyone, you may not change IDs and passwords of users. However you should change administrator's ID and password with unique names (max. 9 characters).

It is possible to give and forfeit authorities for users to control pan/tilt/zoom and to control video with such conditions as quality options, QBOX settings, etc. Administrator has full authorities to give a certain user a right to control or not.

**4.2.3 Network Configuration**

You can set the IP address, Network Mask, Broadcast address, Gateway address, and DNS addresses. By clicking 'Get From Netmask' button after assigning the IP address and Network Mask address, the broadcast address is to set automatically.

**NetCam4**

**Section 4**

| Parameter Name  | Parameter Value   |
|---|---|
| DHCP Client Protocol  | <input type="radio"/> Disable <input checked="" type="radio"/> Enable |
| IP Address  | 192.30.40.7   |
| Netmask   | 255.255.255.0   |
| Broadcast Address   | 192.30.40.255 <input type="button" value="Get From Netmask"/>         |
| Gateway IP Address  | 192.30.40.254   |
| Ethernet(MAC) Address   | 00.30.A1.00.11.E5   |
| DNS1 Server IP Address  | 203.255.112.34  |
| DNS2 Server IP Address  | 203.255.117.34  |
| DNS3 Server IP Address  | 192.112.36.4  |
| <input type="button" value="Confirm"/> <input type="button" value="Reset"/> <input type="button" value="Help"/> |   |

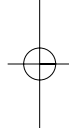
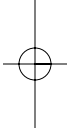
When the addresses are not assigned properly, you cannot access NetCam4 remotely. Even on the local network, you are not able to access if you do not assign an IP address to NetCam4 properly.

If you activate the 'DHCP Client Protocol' menu, all the addresses are set automatically by the NetCam4 detecting them from the DHCP server of your ISP. The detected addresses are not seen on the screen.

**4.2.4 Dynamic IP Registration Service for ISDN, XDSL Users**

| Parameter Name  | Parameter Value   |
|---|---|
| Auto IP Registration Function   | <input type="radio"/> Disable <input checked="" type="radio"/> Enable |
| Registration Server Address   | www.yoursite.com  |
| Registration Interval   | 3600 secs   |
| Access Token  |   |
| Current Registration Status   | Not Registered  |
| <input type="button" value="Confirm"/> <input type="button" value="Reset"/> <input type="button" value="Help"/> |   |

If you install the NetCam4 on the network with a dynamic IP address (floating IP address), you should register the NetCam4 to 'dynamic IP registration server' to give simple connectivity using the NetCam4 name set in the System Configuration menu. If not, no one can access your NetCam4 through the Web browser. This is because no one knows the IP address access of the NetCam4. Contact your re-seller for information.



3922 988 99011 00-47

© 2000 Philips Electronics N.V.  
Data subject to change without notice

