

EUT:AGP VGA CARD

FCC ID:FQIRIVATNT

JOYTECH COMPUTER CO., LTD.

USER'S MANUAL

EXHIBIT D

Congratulations and welcome your purchase of this advanced graphic accelerator or sound card. This enclosed setup CD contains all the information about the board. May you enjoy it doing it by yourself. Following is the important installation procedure in Chapter 1 and 2.

Chapter 1 Hardware Installation - Safely placing the card in your computer

Chapter 2 Software Installation - Easily installing the enhanced driver

Chapter 3 Video Mode Tables

Chapter 1 Hardware Installation - Safely placing the card in your computer

1. Please power off your computer and monitor, then disconnect the monitor from the back of your computer.
2. Be aware to discharge your body's static electricity by touching the metal surface of computer chassis. Then remove the computer cover.
3. If there is an existing card in your system, replace it gently but save the screw. Or, you may need to remove the cover from the rear of expansion slot that you select.
4. Align your card with an empty corresponding expansion slot (PCI or AGP), then carefully grasp the card by top edge and put it firmly into the slot. Secure the screw to fasten the card in place and replace the computer cover.
5. Plug the monitor cable into your card, then turn on the computer and monitor.
6. Now you have finished the hardware installation and are ready to install the driver.

Chapter 2 Software installation - Easily installing the enhanced driver

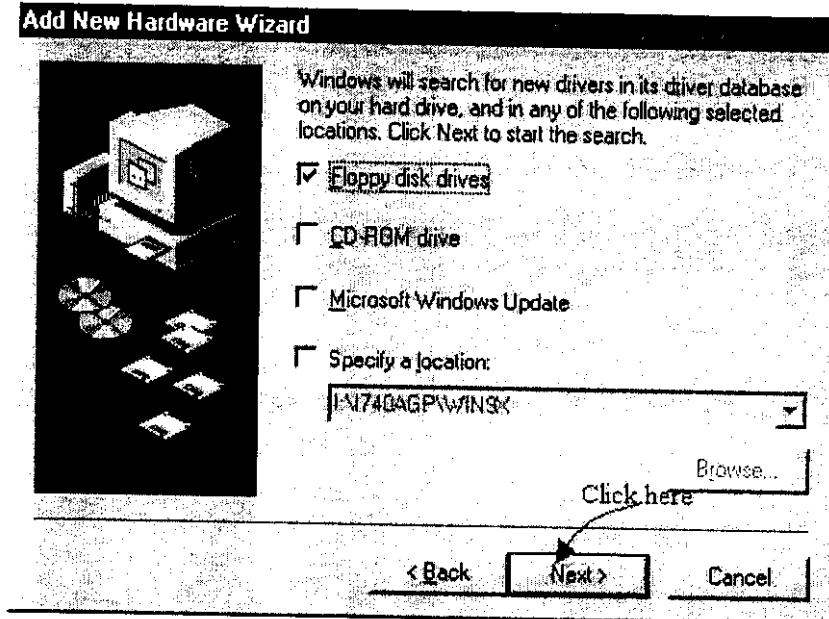
The Setup CD title bring you to take advantage of your card's performance. But, there are some issues you should note in advance.

1. If it is the first time you install the card by the Plug and Play feature of Windows 95/98. Windows will find a new hardware and ask for the driver. There are four (4) different kind conditions from Windows 98, Windows 96 OSR 2, Windows 95 and Windows NT. The basic rule is to click " Next ", " Next"...until " Finish ".

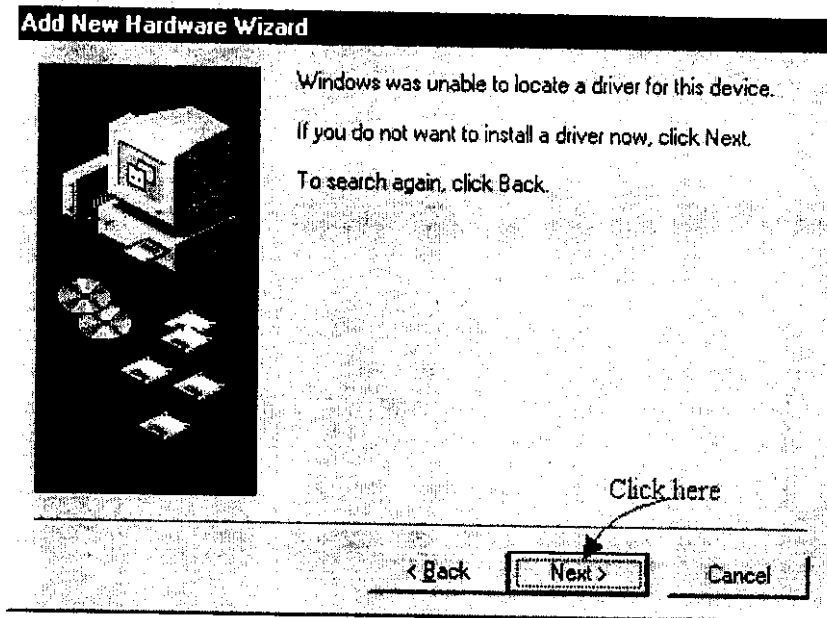
For Windows 98:

(The general rule is to click Next", Next" ... until Finish")

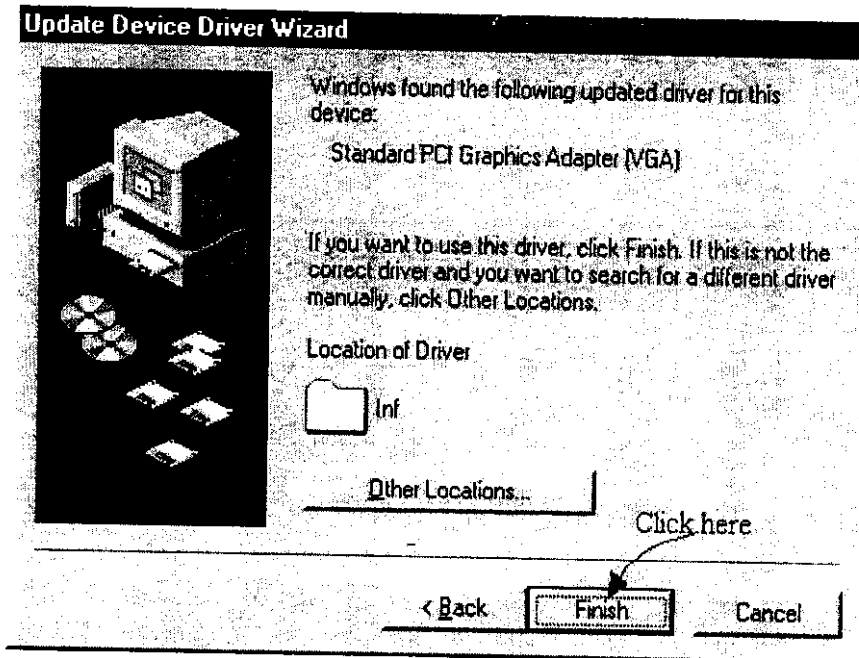
After launch Windows 98, you will see a dialog similar to the one (Add new hardware Wizard) in the window.



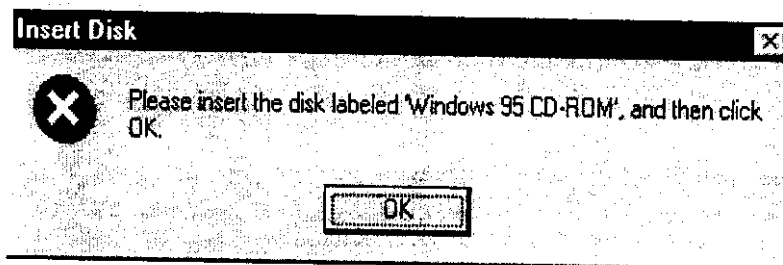
The default is " Next ", press " Next ", after that, you will see a dialog as follows.



The default is " Next ", press " Next ", after that, you will see a dialog as follows.



Simply press " Finish ", and after that you will see following window:

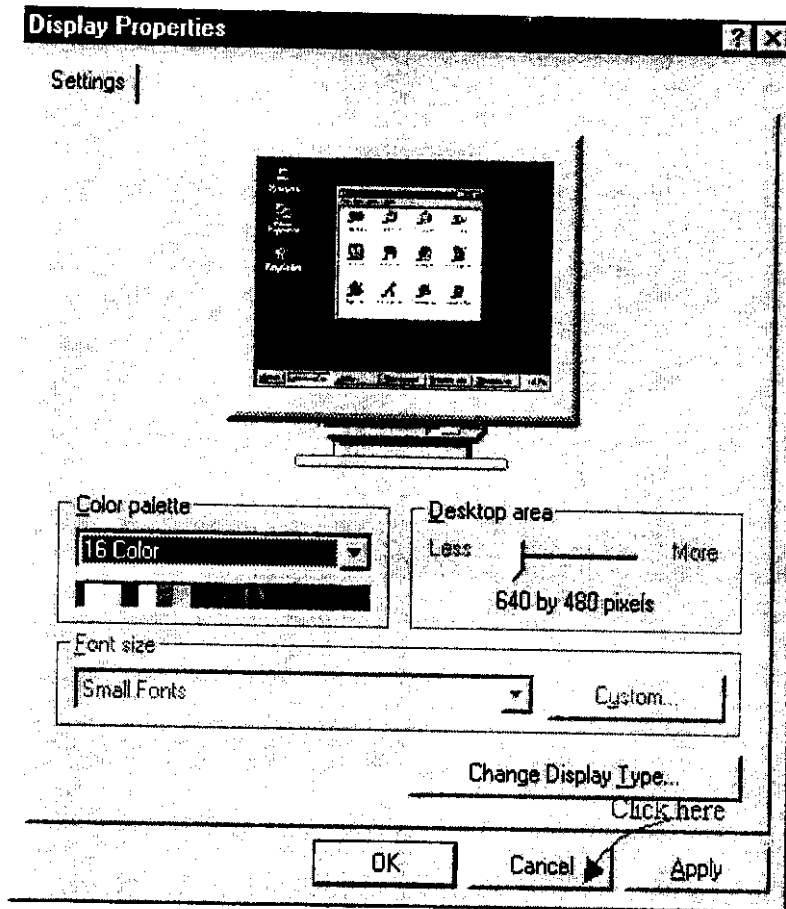


Please insert your Windows 95 CD-title into CD-ROM driver, then follow on-screen instructions to go on.

While Windows prompt you to restart Windows, Click " Yes " to restart Windows. After Windows restarting, go to step 2.

For Windows 95 (Original Version)

After launch Windows 95, you will see a dialog similar to the one (New Hardware Found) in the windows.



Click " Cancel ", then go to step 2.

While Windows prompt you restart Windows; please click " Yes " to restart your system. After Windows restarting go to step 2.

For Windows NT:

Please select VGA mode from boot menu, if it is your first time to start Windows NT.

2. Insert the Setup CD into your CD-ROM driver.
IF Windows 95/98 runs the CD-ROM automatically, proceed to step 3.
3. It will auto-launch the setup program on Windows 95/98 or Windows NT then click a proper driver.
4. If you are on the other platform on the setup program does not auto-run, please double click the **MSSETUP.EXE** on the root of the setup CD. After a setup display in the specific setup window, you can conveniently install the driver and related software by the on-screen instructions to complete the installation.

The following windows is an example Setup Window for 3Dfx Banshee, other chipset has similar picture. Click the button to install a corresponding drivers or software. While Windows prompt you to restart Windows, please click YES to restart your system.

Resolution Rate	Refresh Rate	Refresh Rate	Refresh Rate	Refresh
640X480	60-85	60-85	60-85	-
800X600	56-85	56-85	56-85	-
1024X768	60-85	60-85	60-85	-
1280X1024	60-85	60-85	60-85	-
1600X1200	60-75	-	-	-

3DLabs Permedia2/8MB

Resolution Rate	Color Depth 8-bit Refresh Rate	16-bit Refresh Rate	24-bit Refresh Rate	32-bit Refresh
640X480	60-100	60-100	60-100	-
800X600	60-100	60-100	60-100	-
1024X768	60-75	60-75	60-75	-
1152X870	60-75	60-75	60-75	-
1280X1024	60-75	60-75	60-75	-
1600X1200	60-75	60-75	60-75	-

Cirrus Logic 5465 AGP/ 4MB

Resolution Rate	Color Depth 8-bit Refresh Rate	16-bit Refresh Rate	24-bit Refresh Rate	32-bit Refresh
640X480	60-85	60-85	60-85	-
800X600	56-85	56-85	56-85	-
1024X768	60-85	60-85	60-85	-
1152X864	70-85	70-85	70-85	-
1280X1024	60-85	60-85	60-75	-
1600X1200	60-96i	60-96i	-	-

3Dfx VoodooII PCI/12MB

Mode	Double Buffer (No Z)	Double Buffer (With Z)	Triple Buffer (No Z)	Triple Buffer (With Z)
Resolution	Refresh Rate	Refresh Rate	Refresh Rate	Refresh Rate
640X400	72-120	72-120	72-120	72-120
640X480	72-120	72-120	72-120	72-120
800X600	72-120	72-120	72-120	72-120

Remark: Refresh rate might be varied slightly according to user's monitor size.

Chapter 4 Special Introduction of 3Dfx PCI Voodoo 2 card

1. Voodoo 2 PCI VGA Board