

# *Calibration software operation manual*

*V.1.01 Aug 15 2002*

---

# INDEX

---

1. Introduction	2
(1) System configuration	2
(2) Calibration software installation	2
2. Calibration software	3
(1) Program execution	3
(2) CONNECT	3
(3) SCALE	4
(4) OFFSET	4
(5) Draw	4
(6) Test 4	5
(7) Test 48	5
(8) Manual adjustment	6
(9) SIG ADJ (Signal adjustment)	6
(10) HELP	6
3. Uninstallation	7
(1) Program execution	7

---

# 1. Introduction

---

## (1) System configuration

Please confirm the following hardware, software.

- 1) Personal computer (PC)
- 2) Touch Screen
- 3) Installation CD

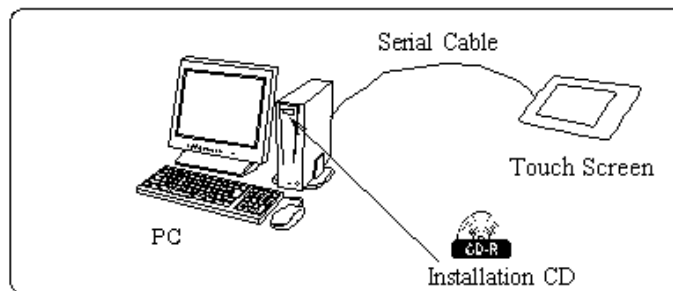


Figure 1: System configuration

## (2) Calibration software installation

Execute "*setup.exe*" of "*Installation CD*".

When a CD drive is "*Autorun mode*", "*setup.exe*" will be executed automatically.

Follow the instructions of "*setup.exe*".

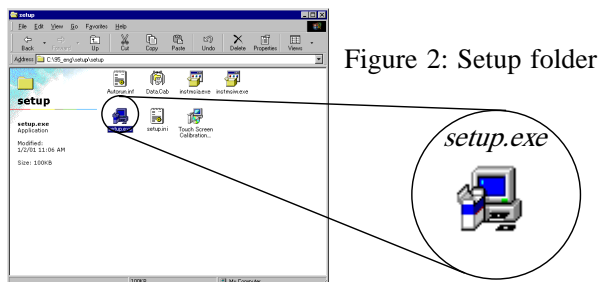


Figure 2: Setup folder

If figure 3 is displayed, click "*Next>*" button.

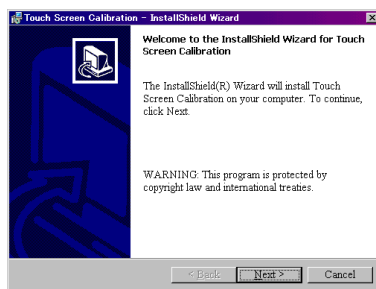


Figure 3: Setup.exe

If figure 4 is displayed, click "*Finish*" button.

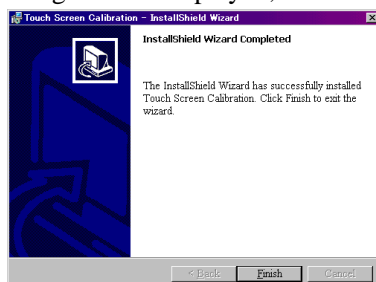


Figure 4: Setup finish.

---

## 2. Calibration software

---

### (1) Program execution

Select *Start -> Programs -> Calibration -> Calibration*  
or  
Select "*Calibration*" shortcut.

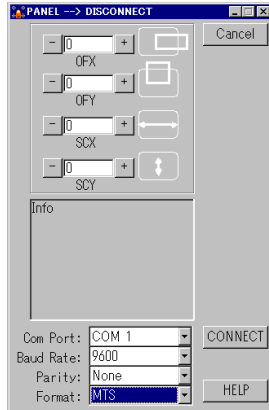


Figure 5: Calibration software

### (2) CONNECT

When figure 5 is displayed, confirm "*Serial setting*", and click "*CONNECT*" button.

When connection is successful, figure 6 and figure 7 are displayed.

When other software are using the COM port, it does not connect.

In this case, change the COM port. If it has only one COM port, change the baud rate of current installed driver, so COM port become free, then can connect.

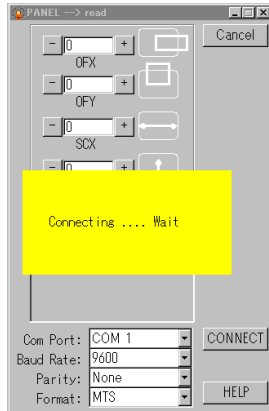


Figure 6: Trial of connection

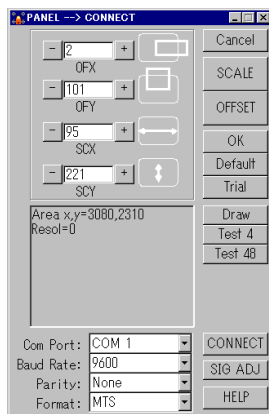


Figure 7: Connection success

Default "*Serial setting*" value are "*9600bps*", "*parity none*", "*COM1 port*", and "*MTS*" format.  
Baud rate is fixed at 9600 and Parity none.

### (3) SCALE

When *"SCALE"* button is clicked, scale window is shown with *"+" cursor*.

When figure 8 is displayed, touch center of *"+" cursor*.

Keep touching *"+" cursor* till *"progress meter"* becomes full.



Figure 8: SCALE window

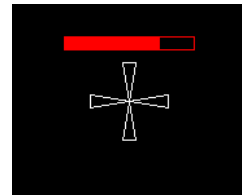


Figure 9: progress meter

### (4) OFFSET

When *"OFFSET"* button is clicked, offset window is shown with *"+" cursor*.

When figure 10 is displayed, touch center of *"+" cursor*.

Keep touching *"+" cursor* till *"progress meter"* becomes full.



Figure 10: OFFSET window

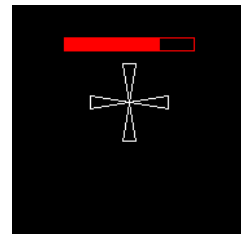


Figure 11: progress meter

### (5) Draw

When *"Draw"* button is clicked, draw window is shown.

When figure 12 is displayed, touch tablet, and you can trace graphics.

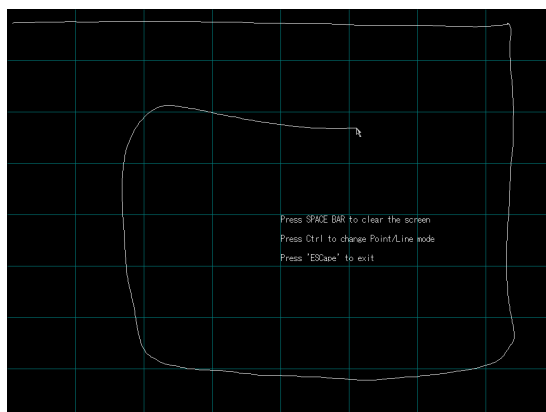


Figure 12: DRAW window

## (6) Test 4

When "*Test4*" button is clicked, "*Test 4*" window is shown.

When figure 13 is displayed, touch center of "+ cursor".

Keep touching "+ cursor" till "*progress meter*" becomes full.

Figure 15 is displayed when you input four points.



Figure 13: Test4 window (1)

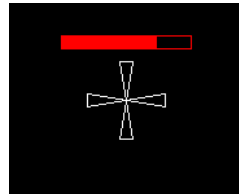


Figure 14: progress meter

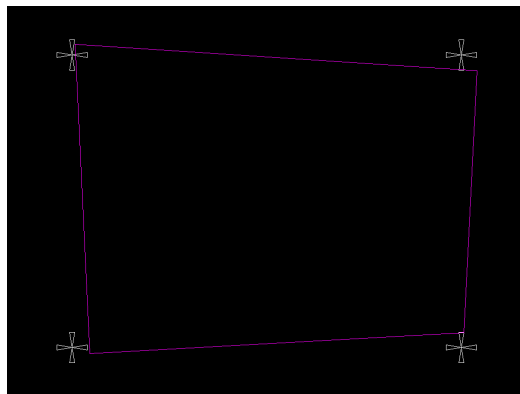


Figure 15: Test4 window (2)

## (7) Test 48

When "*Test48*" button is clicked, "*Test 48*" window is shown.

When figure 16 is displayed, touch center of "+ cursor".

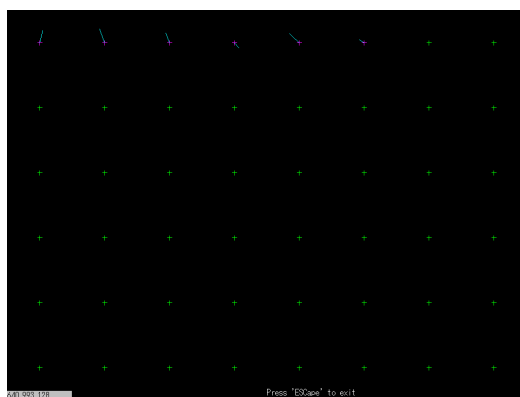


Figure 16: Test48 window

## (8) Manual adjustment

Setting values of SCALE and OFFSET are changed when you push "+" and "-" button.  
You can adjust four kinds of setting values.

- 1) Scale of X coordinate
- 2) Scale of Y coordinate
- 3) Offset of X coordinate
- 4) Offset of Y coordinate

Click "Trial" button to memorize last setting after having adjusted setting values by "+" and "-" button.

Push "Default" button if you don't expect modification.

It is completed when you push "OK" button.

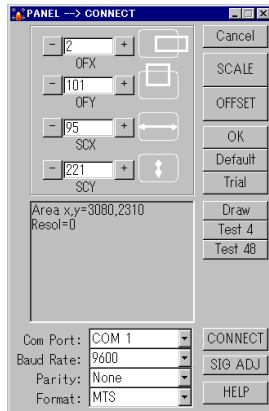


Figure 17: Manual adjustment

## (9) SIG ADJ (Signal adjustment)

When "SIG ADJ" button is clicked, "SIG ADJ" window is shown. (Figure 18)

It have been adjusted Ex-factory and unnecessary for general users to activate it.

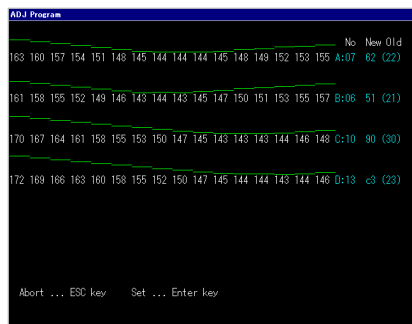


Figure 18: SIG ADJ window

## (10) HELP

When "HELP" button is clicked, "HELP" window is shown. (Figure 19)

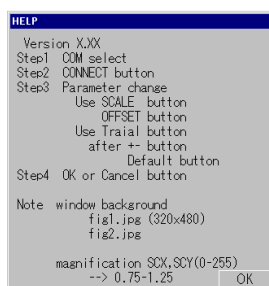


Figure 19: HELP window

---

## 3. Uninstallation

---

### (1) Program execution

Select: *Start -> Settings -> Control Panel -> Add/Remove Programs*



Figure20: Uninstallation program

Add/Remove Programs Properties appears. (Figure 21)

Select "*Touch screen Calibration*" and click (or tap) "*Add/Remove...*" button.

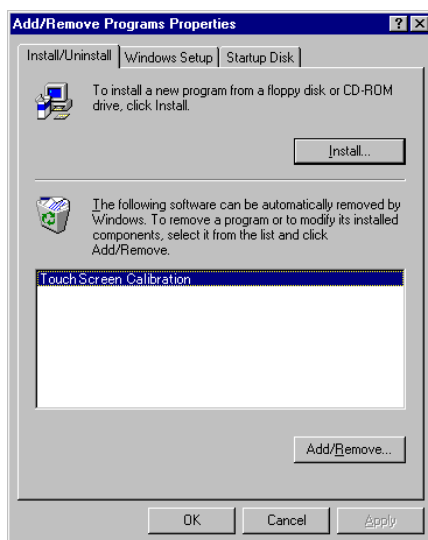


Figure 21: Add/Remove Programs Properties

If figure 22 is displayed , click "*Yes*" button.

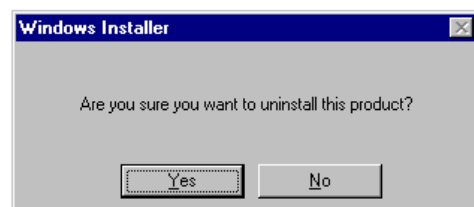


Figure 22: Windows Installer