

Appendix C - User's Manual

FCC NOTICE

THIS DEVICE COMPLIES WITH PART 15 OF THE FCC RULES.
OPERATION IS SUBJECT TO THE FOLLOWING TWO CONDITIONS:
(1) THIS DEVICE MAY NOT CAUSE HARMFUL INTERFERENCE, AND
(2) THIS DEVICE MUST ACCEPT ANY INTERFERENCE RECEIVED,
INCLUDING INTERFERENCE THAT MAY CAUSE UNDERSIRED
OPERATION.

This equipment has been tested and found to comply with the limits for a Class B digital device, pursuant to part 15 of the FCC Rules. These limits are designed to provide reasonable protection against harmful interference in a residential installation. This equipment generates, uses and can radiate radio frequency energy and, if not installed and used in accordance with the instructions, may cause harmful interference to radio communication. However, there is no guarantee that interference will not occur in a particular installation. If this equipment does cause harmful interference to radio or television reception, which can be determined by turning the equipment off and on, the user is encouraged to try to correct the interference by one or more of the following measures :

- Reorient or relocate the receiving antenna.
- Increase the separation between the equipment and receiver.
- Connect the equipment into an outlet on a circuit different from that to which the receiver is connected.
- Consult the dealer or an experienced radio/TV technician for help.

NOTE : The manufacturer is not responsible for any radio or TV interference caused by unauthorized modifications to this equipment. Such modifications could void the user's authority to operate the equipment.

Model	_____
-------	-------

Windows'98

Digitizer driver operation manual

INDEX

0. Introduction	2
(1) Configuration	2
(2) Driver installation	2
1. Swap-button Application	3
(1) Program execution	3
(2) Program operation	3
2. Control-panel Application	4
(1) Program execution	4
(2) Calibration:	4
(3) Double tap	5
(4) Parameters	5
(5) COM	6
3. Driver Uninstallation	7
(1) Program execution	7

0. Introduction

(1) Configuration

Please confirm the following hardware, software.

- Personal computer (*Windows'98*)
- Digitizer
- Installation CD

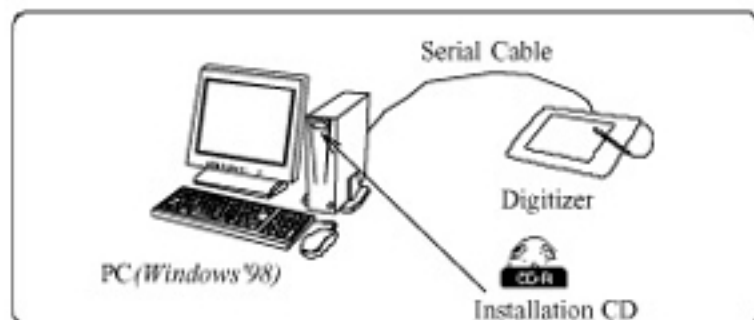


Figure 1: System configuration

(2) Driver installation

Execute "*setup.exe*" of "*Installation CD*".

Follow the instructions of "*setup.exe*".



Figure 2: Setup folder

If figure 3 is displayed on the personal computer, push "Next>" button.



Figure 3: Setup.exe

If figure 4 is displayed on the personal computer, push "Next>" button.
Restart the *Windows'98*.



Figure 4: Setup folder.

1. Swap-button Application

Select: *Start -> Programs -> TouchPanel -> Swapbutton*

Swapbutton application is to switch left and right button of mouse.



Figure 5: Swap-button application

(1) Program execution

Figure 6 is displayed, and get possible to execute swap-button application.



Figure 6: Swap-button application



Figure 7: Left button

(2) Program operation

When swap-button is pointed, selected button is colored. • Figure 7, Figure 8 •



Figure 8: Right button

2. Control-panel Application

(1) Program execution

Select: *Start -> Programs -> TouchPanel -> ControlPanel*

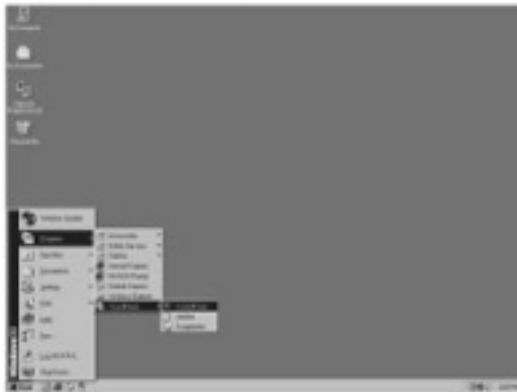


Figure9: Control-panel application

(2) Calibration

When "Calibration" TAB is selected, calibration setting starts.
Figure 10 is shown.



Figure 10: Calibration

When "Start" button is pushed, calibration window is shown with X cursor.



Figure11: Calibration window

Tap center of X cursor.

When pen is pointed other than center, move pen toward center.

After moving pen toward center and detached, next X cursor appear.

X cursor is shown in the order of

CENTER -> LEFT UPPER -> LEFT BELOW -> RIGHT UPPER -> RIGHT BELOW

Do tapping on all X cursor.

If calibration window disappear, calibration is finished.
 "Load default" button is tapped, value at installation is set.
 When "OK" button is tapped, it is kept.
 When "Cancel" button is tapped, setting value is cancelled.

(3) Double tap

When "Double tap" TAB is selected, double tap setting starts.
 "Double tap speed" and "Tolerance" bar, "Load default" button is shown.



Figure 12: Double tap

At "Double tap speed": double tap time is adjusted.
 At "Tolerance": double tap tolerance is adjusted.
 When checkered flag window (Test area) is double tapped, it changed.
 "Load default" button is tapped, value at installation is set.
 When "OK" button is tapped, it is kept.
 When "Cancel" button is tapped, setting value is cancelled.

(4) Parameters



Figure 13: Parameters

When "Parameters" TAB is selected, parameter setting starts.
 "Load default" button is tapped, value at installation is set.
 When "OK" button is tapped, it is kept.
 When "Cancel" button is tapped, setting value is cancelled.

(5) COM



Figure 14: COM port

When "COM:" TAB is selected, COM port setting starts.
"Load default" button is tapped, value at installation is set.
When "OK" button is tapped, it is kept.

3. Driver Uninstallation

(1) Program execution

Select: *Start -> Settings -> ControlPanel->Add/Remove Programs*



Figure15: Uninstallationprogram

Add/Remove Programs Properties appears. • Figure 16•

Select 'Touch Panel Driver(V.x.x)' and click • or tap• Add/Remove... button.



Figure16: Add/Remove Programs Properties

If figure 17 was displayed on the personal computer, push "Yes" button.
Restart the Windows'98.

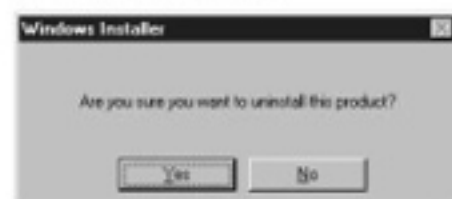


Figure17: Windows Installer