
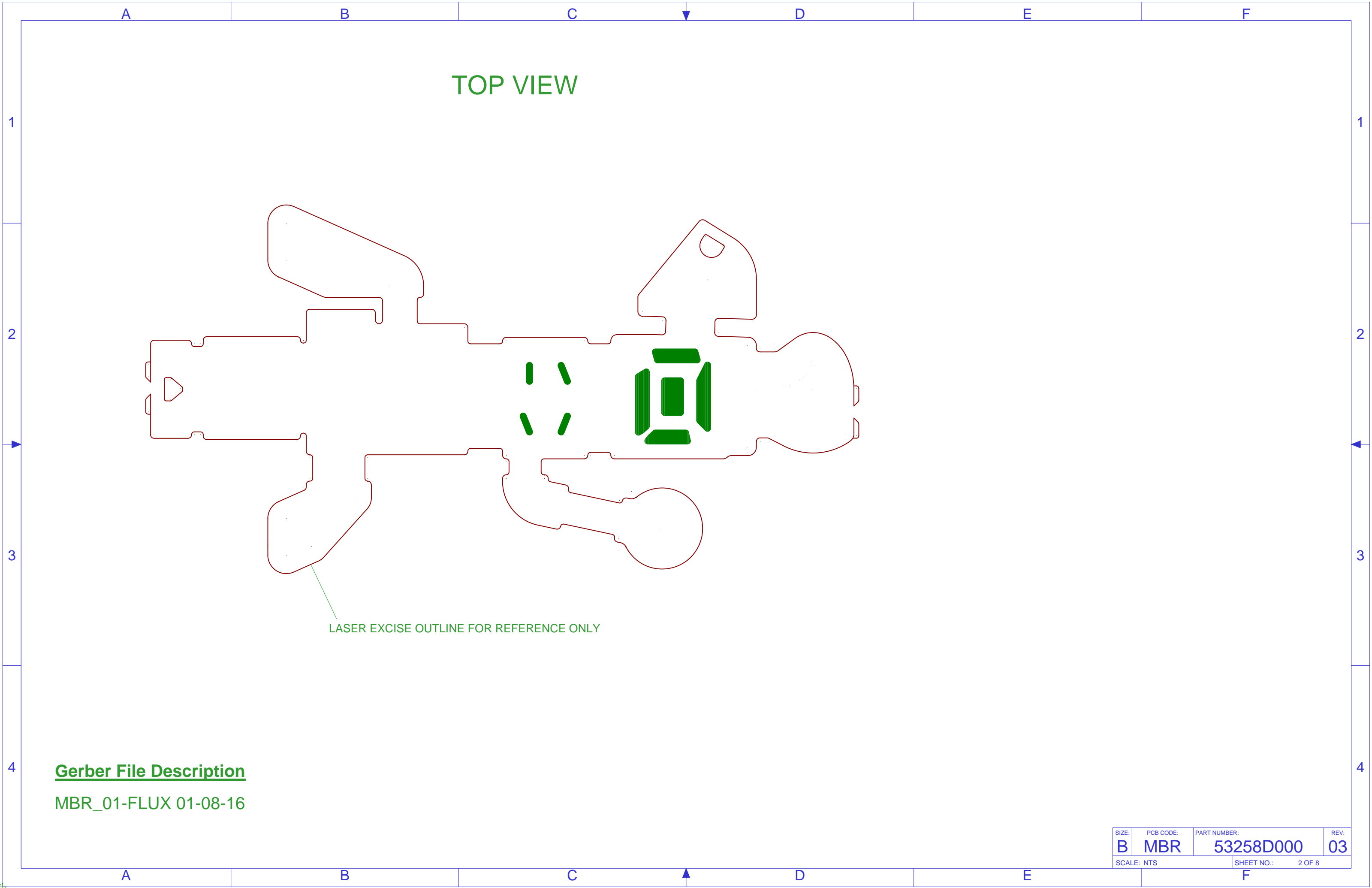


REVISIONS				
REV	ECO	CHANGE DESCRIPTION	DOC	RLSD DATE
02	MN48913	Removed C331, L415 now DNP, new bd outline	TB	5-17-16
03	MN50406	Added F309 to MIC arm, rotated C314	DP	11-18-16

Sheet 01	Assembly Top
Sheet 02	Flux Top
Sheet 03	Stencil Top
Sheet 04	Assembly Bottom
Sheet 05	Stencil Bottom
Sheet 06	Flux Bottom

1. SEE 53258-940 FOR SCHEMATIC.
2. INDIVIDUAL LAYERS AND GERBER FILES ARE DETAILED ON SUBSEQUENT PAGES. ACTUAL GERBER FILES ARE HELD IN DOCUMENTATION SERVICES. GERBER FILES ARE IN A ZIPPED FILE WITH THE SAME PART NUMBER AND REV AS THE DOCUMENT EXCEPT WITH THE "ZIP" EXTENSION.
3. UNDERFILL AND RESIDUE SHALL BE KEPT OFF THE TOP SURFACE OF ALL USER PADS AND TPs. NO UNDERFILL IS ALLOWED IN BEND AREAS BUT MAY BE WIPED OFF. OTHER AREAS WITH NO INDICATOR HAVE NO RESTRICTIONS. SEE DOCS-19-2108 FOR UNDERFILL INSPECTION CRITERIA. NOT ALL CONDITIONS APPLY TO THIS DRAWING.
 - a REINFORCE COMPONENTS WITH UNDERFILL.
 - b PARTIAL UNDERFILL IS ALLOWED BUT NOT REQUIRED.
 - c UNDERFILL IS ALLOWED ON TOP.
 - d WIPE EXCESS UNDERFILL FROM TOP.
 - e COVER EXPOSED PADS WITH UNDERFILL.
 - f DO NOT COVER EXPOSED PADS WITH UNDERFILL.
 - g UNDERFILL IS NOT ALLOWED.
4. DNP DETAILS:
 - a. 01 SIDE COMPONENTS: J302
 - b. 02 SIDE COMPONENTS: J301, L415, L419
 - c. 01 SIDE FOOTPRINTS COVERED BY MASK: None
 - d. 02 SIDE FOOTPRINTS COVERED BY MASK: None
5. LASER DATE CODE IN THIS AREA WITH THE FOLLOWING:
 - a. LL=LOCATION ON PANEL
 - b. PPPP = PANEL NUMBER
 - c. YY = LAST 2 DIGITS OF YEAR
 - d. WW = WEEK

MATERIAL:	TOLERANCE UNLESS OTHERWISE SPECIFIED INCHES [MM]			<div><div>6600 Washington Ave. South Eden Prairie, MN. 55344 tel. (952) 941-6401 www.Starkey.com</div></div>			
	X.X +/- 0.020 [0.51]						
	X.XX +/- 0.010 [0.25]						
	X.XXX +/- 0.005 [0.13]						
	X.XXXX +/- 0.0010 [0.025]						
	ANGLES 1°			TITLE:			
FINISH:	BY	SIGNATURE	DATE	MBR HA ASSY DWG			
	DRFT	Joe Matheson	11-14-16				
	CHKD	Glenn Burnside	11-14-16				
	ENGR	Dustin Degen	11-18-16				
	QLTY	Rick Zellmann	11-15-16				
			SCALE: NTS		SHEET NO.: 1 OF 8		



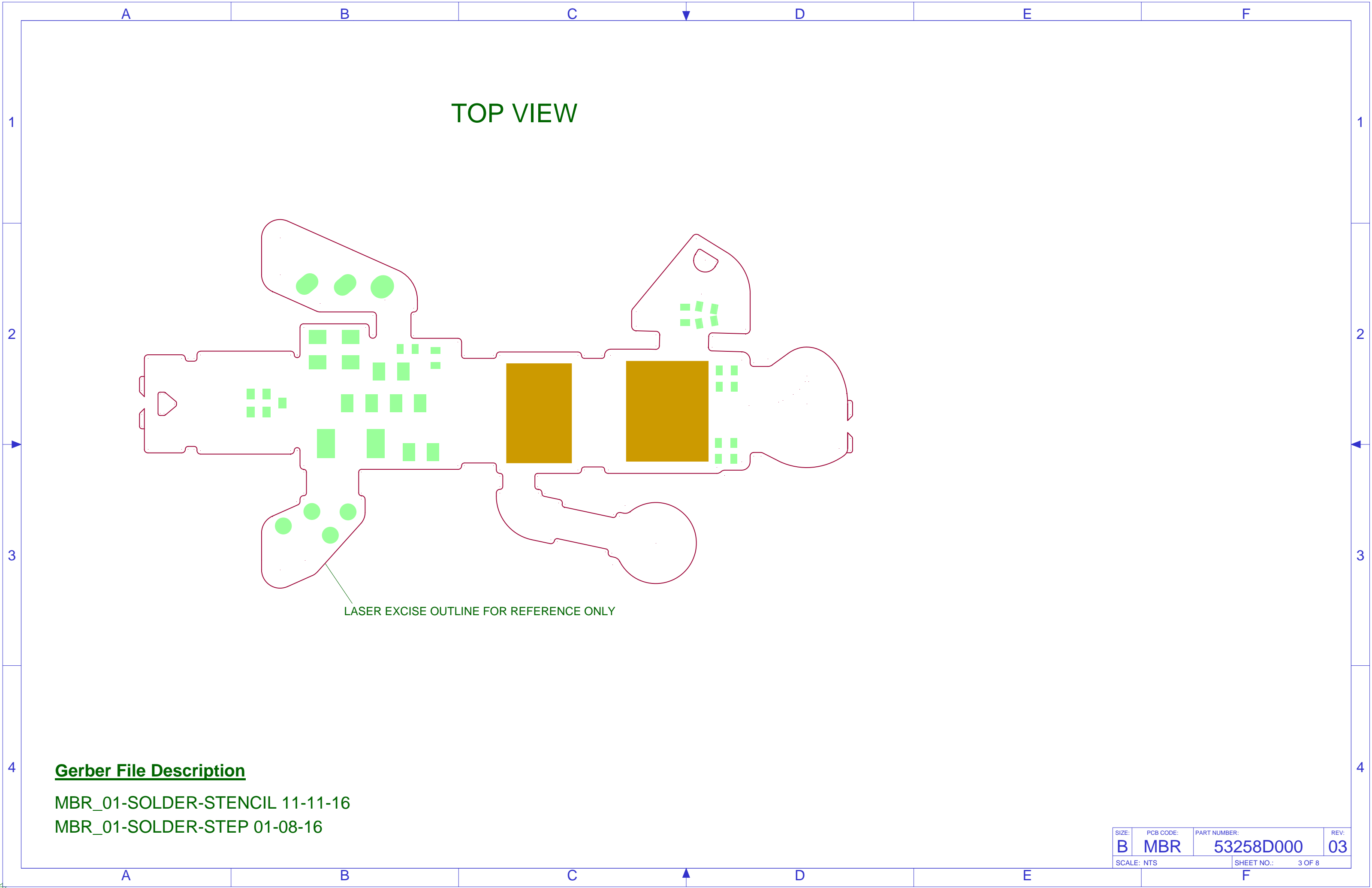
TOP VIEW

LASER EXCISE OUTLINE FOR REFERENCE ONLY

Gerber File Description

MBR_01-FLUX 01-08-16

SIZE:	PCB CODE:	PART NUMBER:	REV:
B	MBR	53258D000	03
SCALE: NTS			SHEET NO.: 2 OF 8



Gerber File Description

MBR_01-SOLDER-STENCIL 11-11-16

MBR_01-SOLDER-STEP 01-08-16

SIZE:	PCB CODE:	PART NUMBER:	REV:
B	MBR	53258D000	03
SCALE: NTS			SHEET NO.: 3 OF 8

1



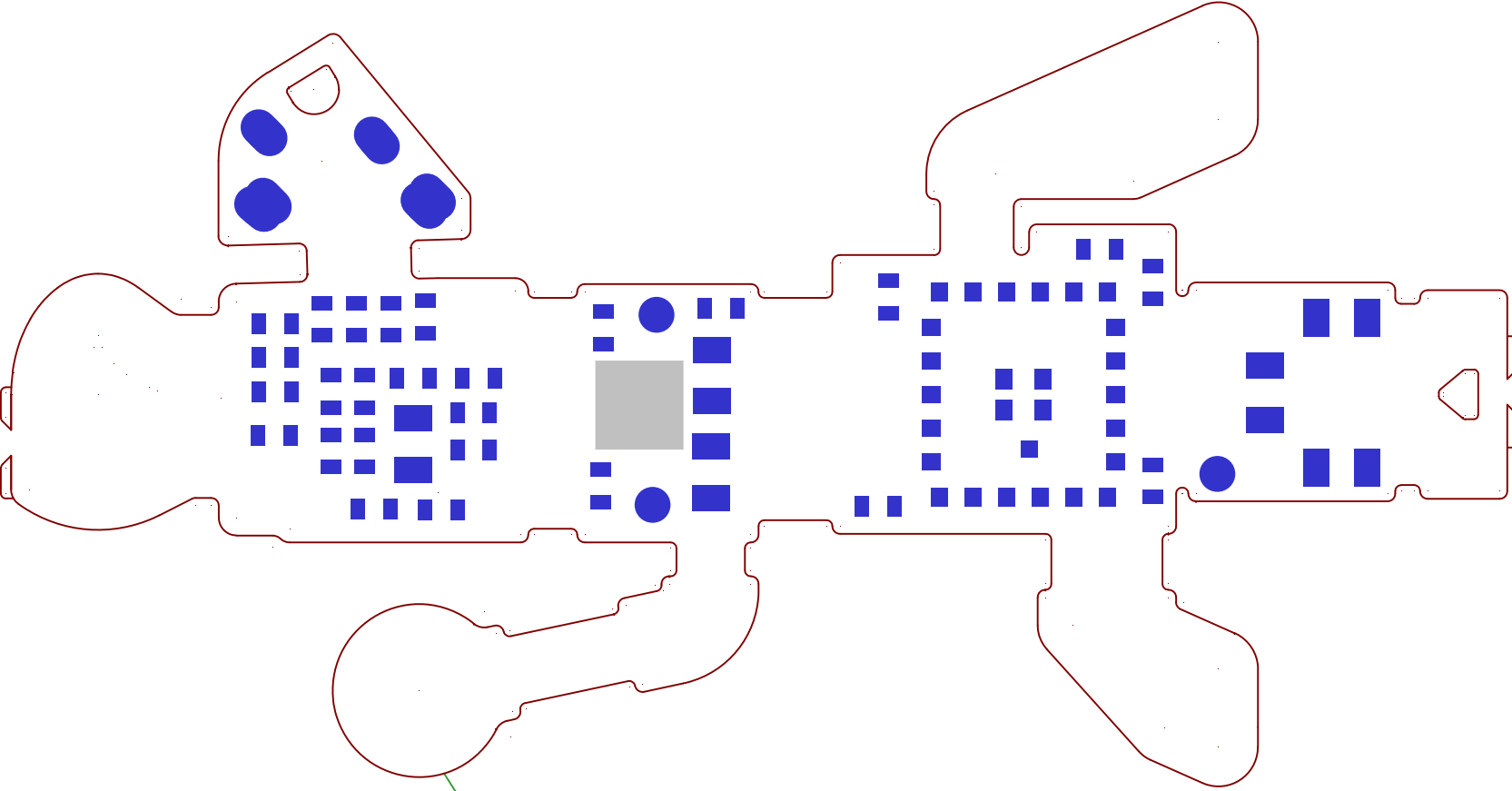
1

2

3

4

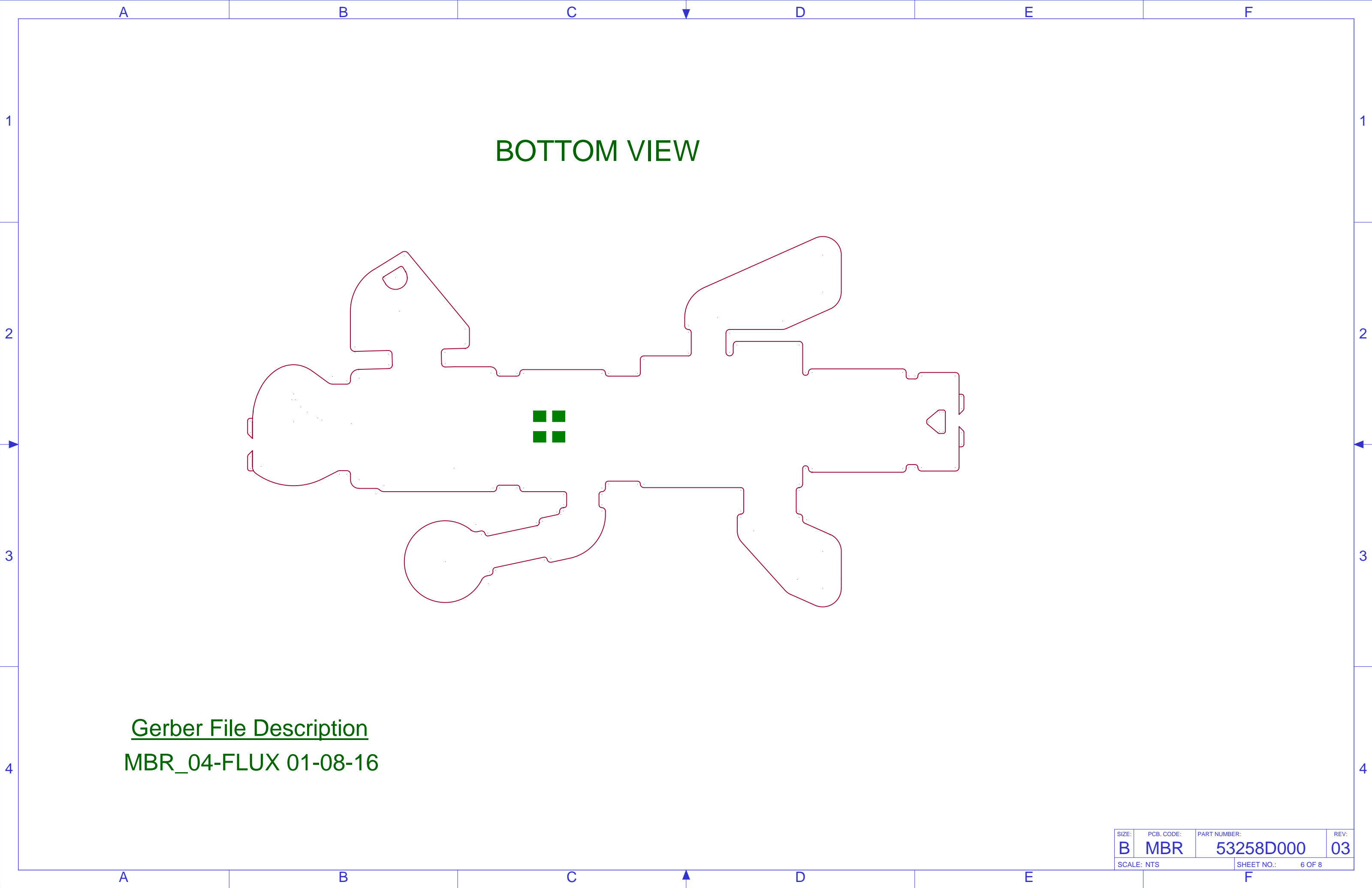
BOTTOM VIEW



Gerber File Description

MBR_04-SOLDER-STENCIL 09-23-16
MBR_04-SOLDER-STEP 01-08-16

SIZE:	PCB CODE:	PART NUMBER:	REV:
B	MBR	53258D000	03
SCALE: NTS			SHEET NO.: 5 OF 8




BOTTOM VIEW

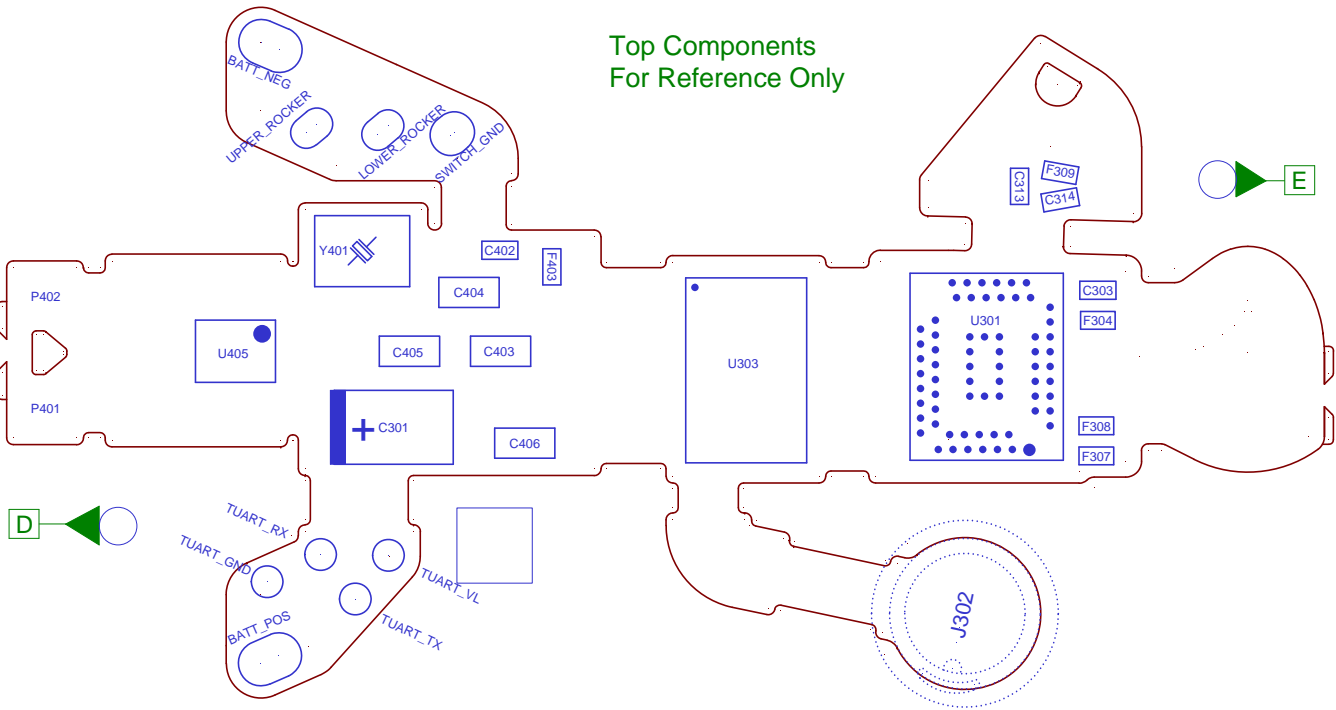
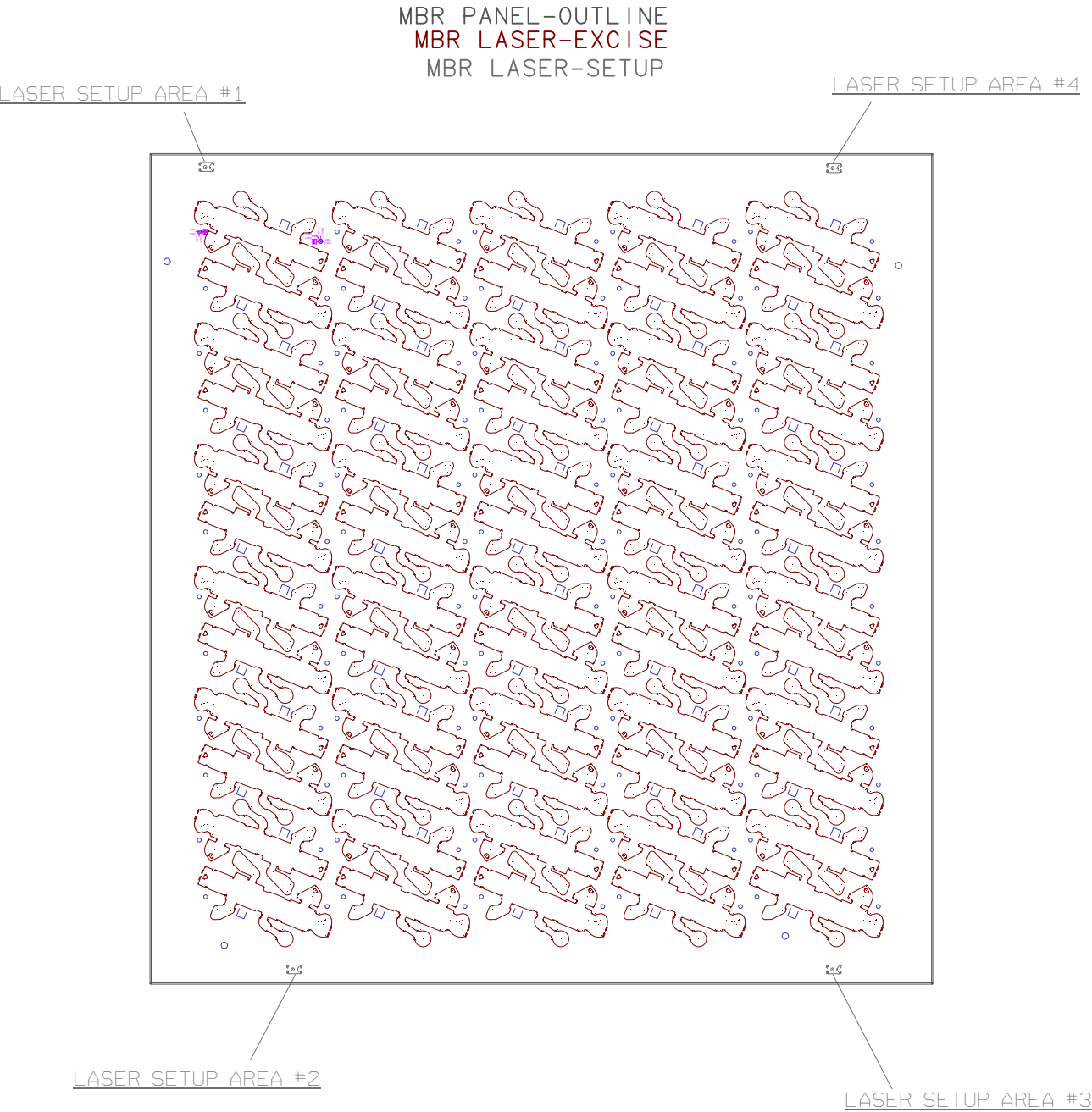
Gerber File Description

MBR_04-FLUX 01-08-16

LASER EXCISE SPECIFICATIONS: Excise Gerber
TOP VIEWS SHOWN

LASER EXCISE SPECIFICATIONS:
Page 7 Excise Gerber
Page 8 Excise Quality and Packaging

1. INDIVIDUAL LAYERS AND GERBER FILES ARE DETAILED ON SUBSEQUENT PAGES.
ACTUAL GERBER FILES ARE HELD IN DOCUMENTATION SERVICES.
GERBER FILES ARE IN A ZIPPED FILE WITH THE SAME PART NUMBER
AND REV AS THE DOCUMENT EXCEPT WITH THE "ZIP" EXTENSION.
2. ALL GERBER VIEWED FROM TOP LOOKING THROUGH BOARD FOR BOTTOM LAYERS
3. DATUM A IS THE PLANE DEFINED BY THE BOTTOM OF THE PANEL DATUMS D AND E
ARE LOCAL FIDUCIALS THAT APPLY TO EACH AND EVERY CIRCUIT INDIVIDUALLY.
4. LASER ROUTED EDGE:
a. CRITICAL AREAS: NONE
CRITICAL EDGES, IF PRESENT, WILL BE DISPLAYED BY A WIDER RED LINE.
b. NON-CRITICAL AREAS:  .008 [.020] A D E
c. LASER EXCISE GERBER AND EXTRA CUT GERBER ARE COMPENSATED FOR 1-MIL KERF.

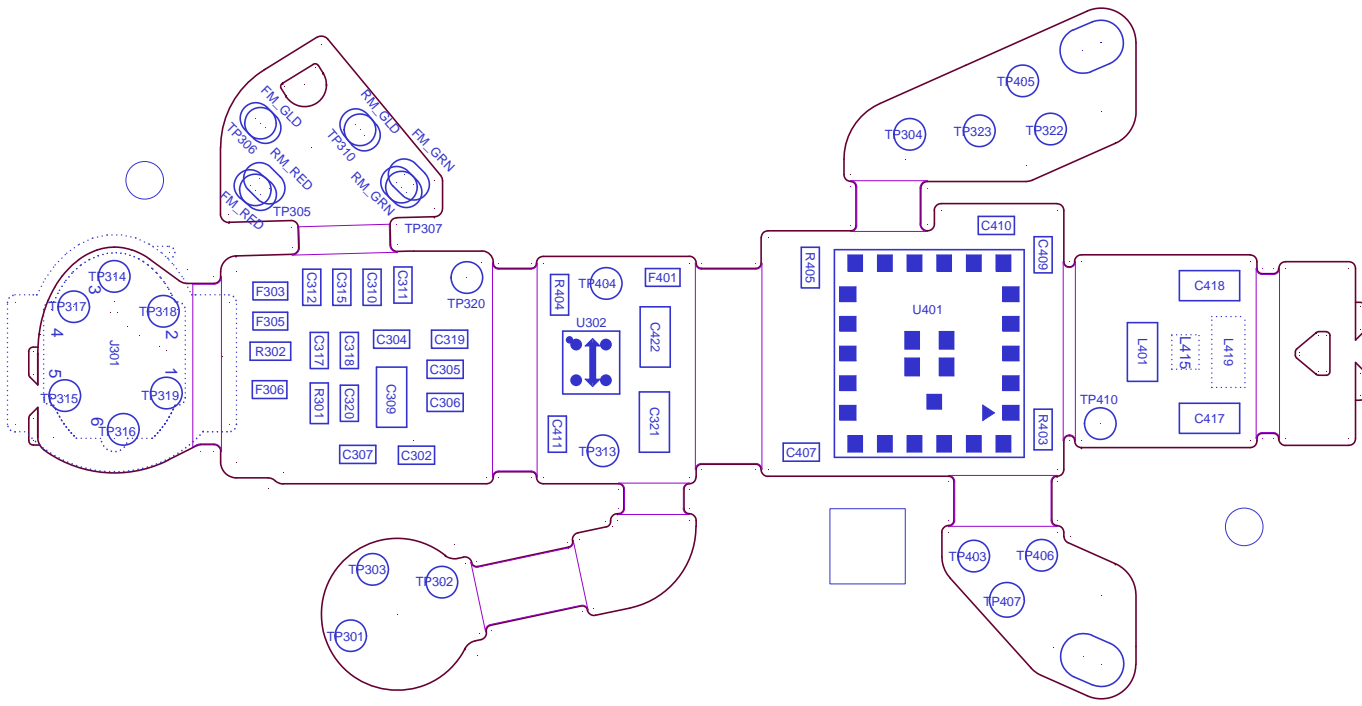
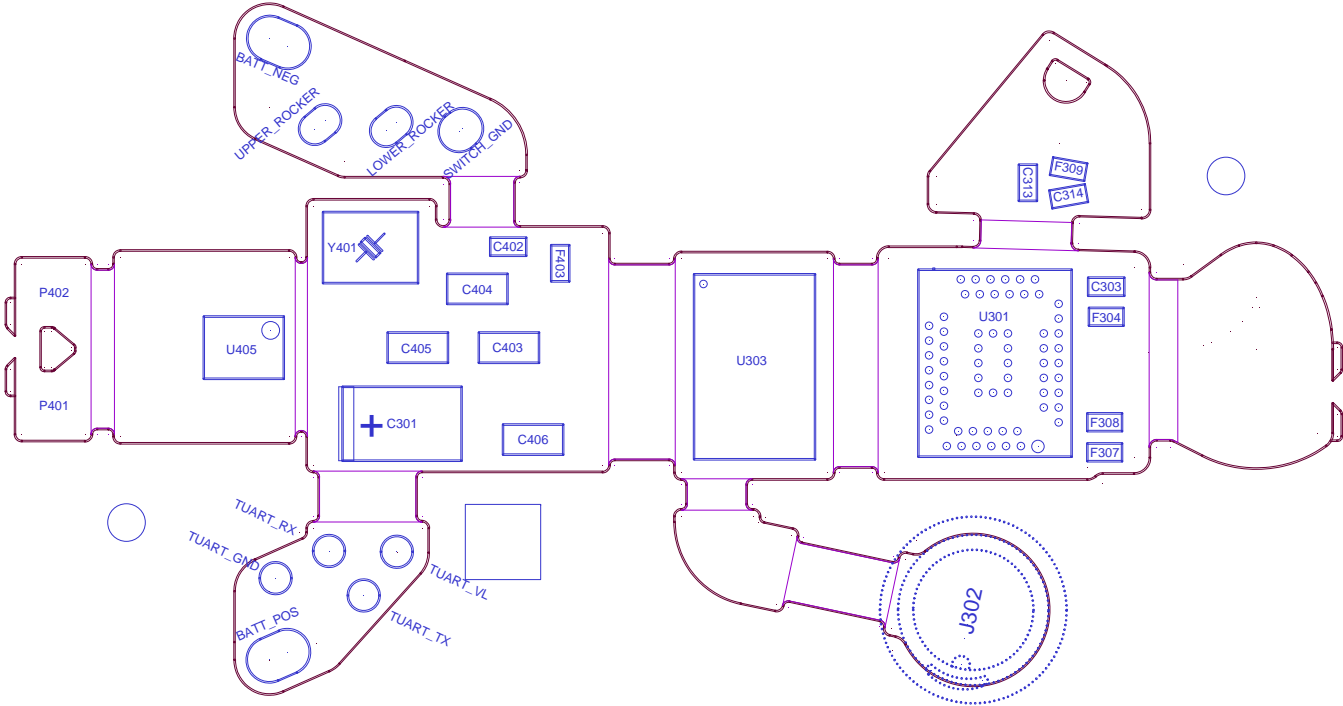


TOP VIEW

LASER EXCISE SIDE - BOTTOM

BOTTOM VIEW

PARTS ARE SHOWN FOR REFERENCE ONLY



LASER EXCISE SPECIFICATIONS: Excise Quality and Packaging

5. QUALITY

- a. LASER KERF EDGE SHALL BE SMOOTH.
- b. LASER MUST COMPLETELY CUT THROUGH PCB MATERIAL.
- c. EXCESSIVE LASER DEBRIS ALONG CUT LINE IS NOT ALLOWED.
LASER DEBRIS SHALL NOT INHIBIT THE SOLDERABILITY OF GOLD PLATED PADS.
- d. PARTS SHALL BE PROTECTED FROM DAMAGE DUE TO HANDLING,
ELECTROSTATIC DISCHARGE, OR EXCESSIVE HUMIDITY.
- e. NO CHEMICAL, AQUEOUS OR PLASMA CLEANING IS ALLOWED WITHOUT STARKEY APPROVAL.
- f. NO REWORK IS ALLOWED WITHOUT STARKEY APPROVAL.

6. PACKAGING.

- a. PARTS TO BE DELIVERED IN ARRAY
- b. PACKAGE TO SHIP AS RECEIVED: ON PALLET 53258-986, IN SAME CASSETTE, IN SAME BOX.
- c. THE ADDITION OF A DESICCANT SACHET AND A MOISTURE INDICATOR IS REQUIRED.

SIZE:	PCB CODE:	PART NUMBER:	REV:
B	MBR	53258D000	03
SCALE: NTS		SHEET NO.:	8 OF 8