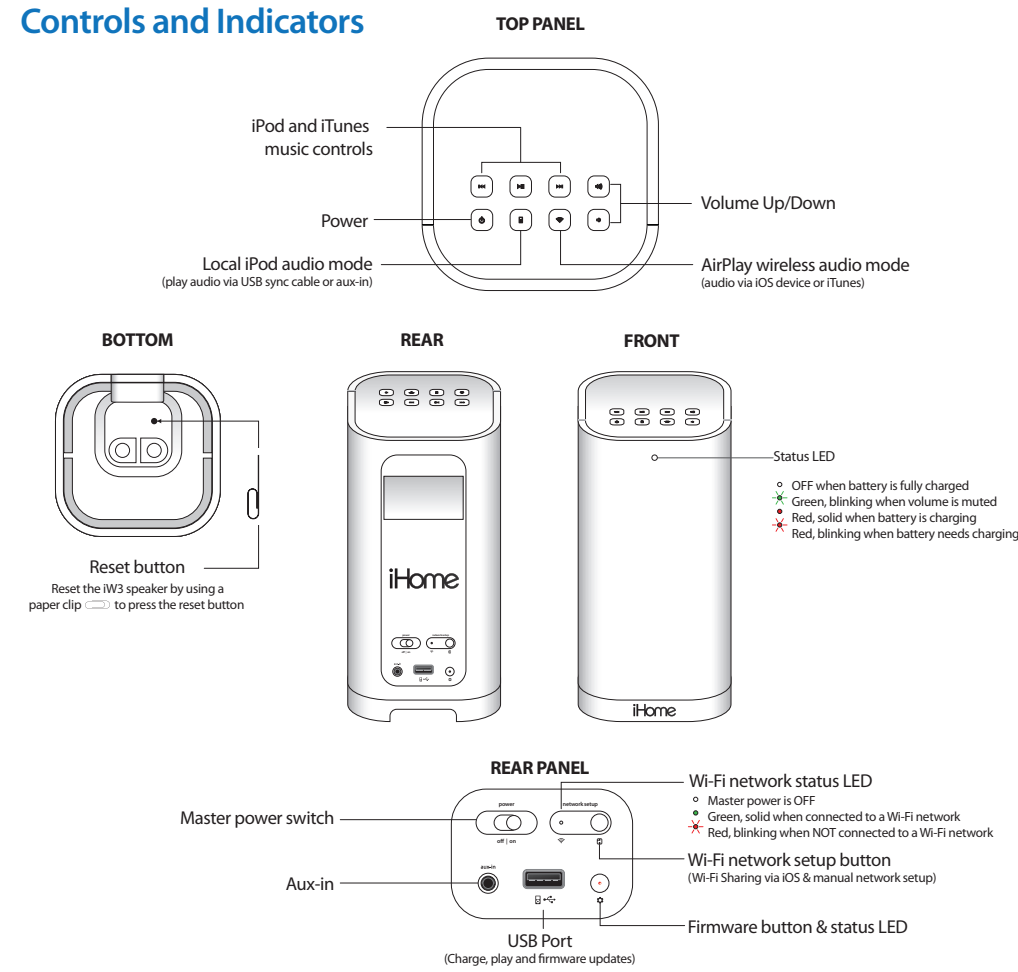


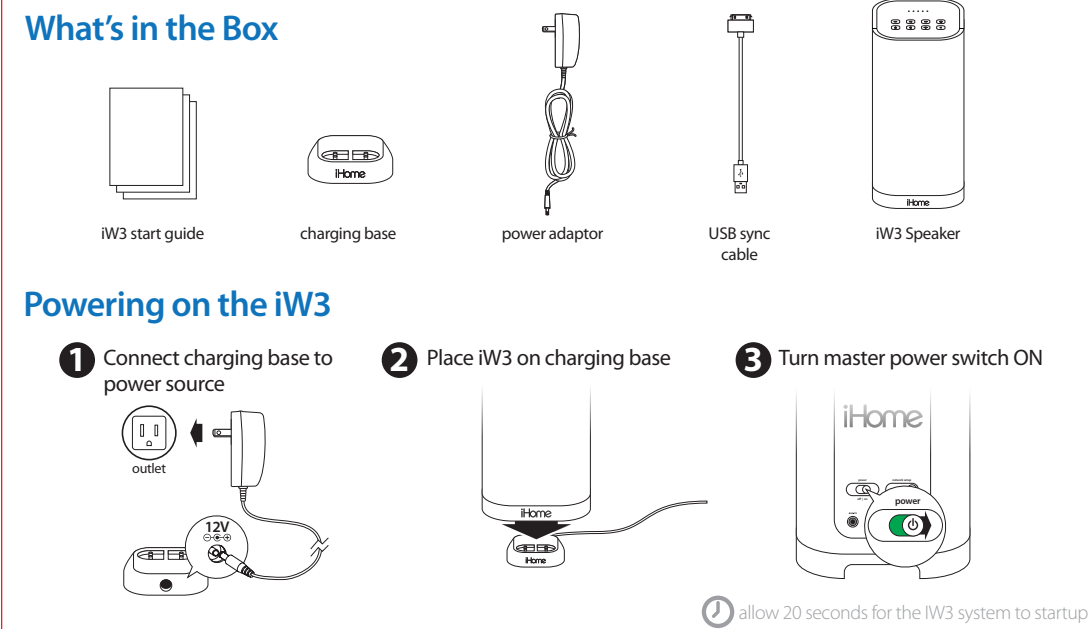
Overview

Controls and Indicators

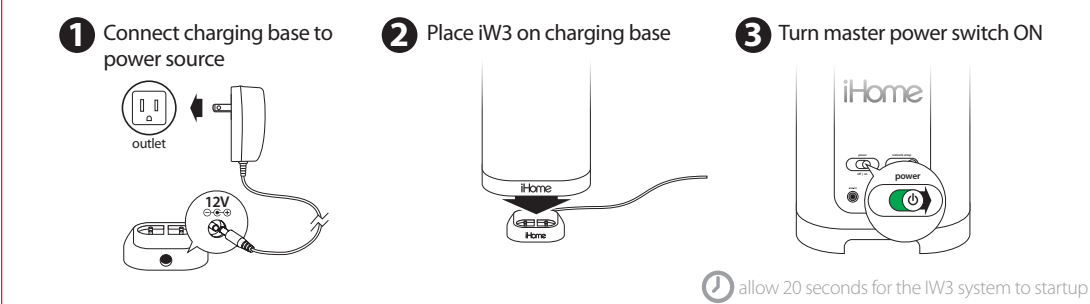


Step 1 - Getting Started

What's in the Box



Powering on the iW3



Check list before proceeding to Step 2

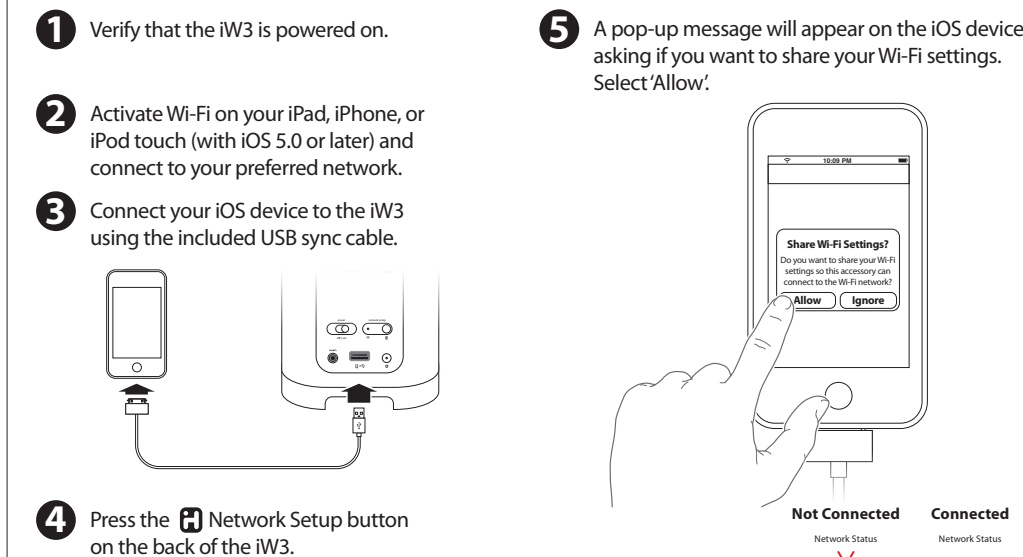
- ✓ To enjoy AirPlay wireless audio, you must have the following:
 - iTunes or an iOS device (iPod touch, iPhone, or iPad).
 - A functioning home network with Wi-Fi.
- ✓ Download the latest software updates for iTunes and your iOS device to ensure that you are able to enjoy the latest AirPlay enhancements and compatibility.
- ✓ Download the iHome Set app for iPod touch, iPhone and iPad.
- ✓ Have your Wi-Fi network name (SSID) and password (if applicable) available for reference.
- ✓ If you use security for your network, use WPA/WPA2 security (not WEP or WPA/WPA2 enterprise)

Note: AirPlay requires iTunes 10.1 (Mac and PC) or later; OR an iPad (1st, 2nd, and 3rd generations) iPhone 4, iPhone 3GS, iPod touch (4th, 3rd, and 2nd generations) with iOS 4.2 or later. The iHome Set app requires iOS 4.2 or later.

Step 2 - Network Setup for AirPlay

Option A - Connecting via Wi-Fi Sharing with iOS 5.0 (RECOMMENDED)

If you have an iPod touch, iPhone, or iPad with iOS 5.0 or later, we recommend that you use Wi-Fi network log-in sharing for the quickest network setup experience.

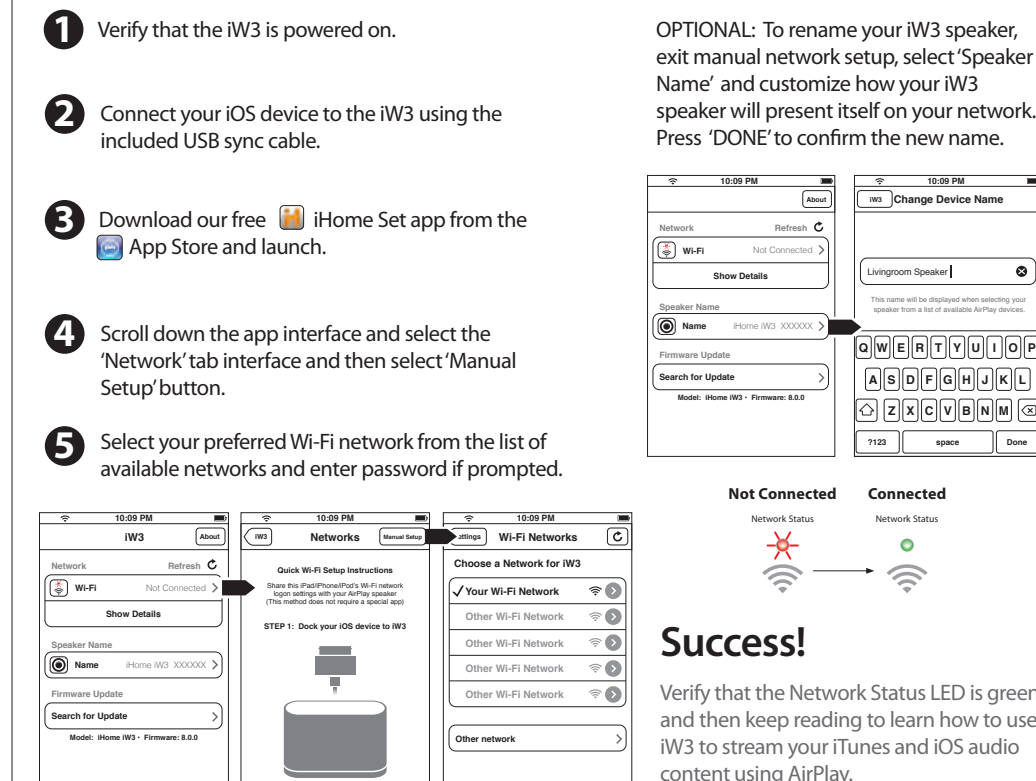


Success!

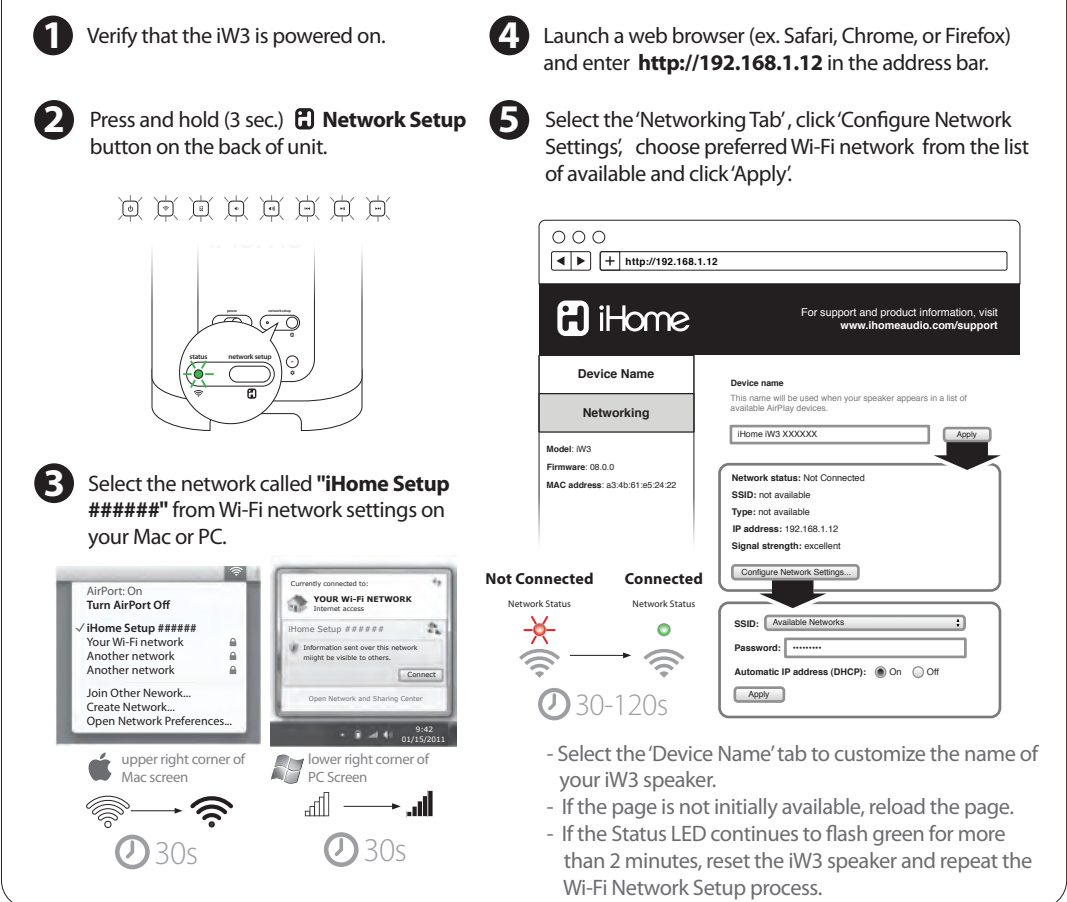
Your iOS device will share current wireless network credentials with the iW3 and a confirmation tone will sound. Verify that the Network Status LED is green and then keep reading to learn how to use iW3 to stream your iTunes and iOS audio content using AirPlay.

Option B - Manually connecting with the iHome Set app

If you have an iPod touch, iPhone, or iPad with iOS 4.2 or later, we recommend that you use our free iHome Set app to easily rename your iW3 speaker and configure network settings.



Option C - Connecting with your Mac or PC over Wi-Fi



Visit our website for additional help: www.ihomeaudio.com/support/airplay/

Step 3 - Play

AirPlay & iPod touch, iPhone, or iPad

Using an iOS device:

1. Connect your iOS device to the same Wi-Fi network as iW3. Go to Settings-> Wi-Fi on your iOS device.
2. Tap on iPod/Music app, look for the AirPlay icon next to the iPod music transport controls.
3. Tap on the AirPlay icon and choose iW3 from the list of speakers. If the iW3 speaker is not available, restart your iOS device and verify that the iW3 is powered on.
4. Press play.

AirPlay & iTunes

Using a Mac or PC with iTunes (AirPlay streaming is designed for iTunes media and audio content only):

1. Connect your Mac or PC to the same Wi-Fi network as iW3.
2. Open iTunes on your computer.
3. Within iTunes open "Preferences", Select the "Devices" tab, and activate the following option: "Allow iTunes control from remote speakers"
4. Click OK, close iTunes preferences.
5. Look for the AirPlay icon in the bottom right corner of the iTunes window.
6. Click the AirPlay icon and choose iW3 from the list of speakers. Click "Multiple Speakers..." to select additional AirPlay speakers. If the iW3 speaker is not available, restart iTunes and verify that the iW3 is powered on.
7. Press play.



Step 4 - Control

AirPlay Wireless Audio Mode

Enjoy AirPlay audio anywhere:

1. Press the power button to exit standby mode and power the iW3 ON.
2. Press the AirPlay wireless audio mode button.
3. Use the play/pause, stop, and next buttons on the iW3 to control streaming AirPlay content.

Local iPod Audio Mode

Charge and Play iPad, iPhone and iPod using iPod USB sync cable:

1. Connect USB sync cable to iW3's USB port.
2. Press the Local audio mode button and enjoy iPod and iPhone charging and audio playback.
3. Using the play/pause, stop, and next buttons on the iW3 in iPod mode will control your iPod music.
3. Use Local Audio mode to play music via USB and Aux-in.

Multi-room audio

Add AirPlay-enabled speakers to any room

iHome's AirPlay solutions provide an affordable way to enjoy a truly wireless home audio experience anywhere you want - including kitchen, bedroom, livingroom or patio.

Apps

Remote App - Control iTunes playback anywhere in the house

Download Apple's Remote app free from the App Store to your iOS device and control your iTunes library and AirPlay speakers wirelessly when connected to the same Wi-Fi network.

PANDORA*, iHeartRadio*, and TuneIn* - Internet radio music apps
Turn your iW3 system into an internet radio when you use AirPlay audio streaming with your favorite iOS music apps.

iHome-apps - iW3 works with a suite of iHome apps available on the app store
iHome Set - control iW3 features like network setup, EQ, and firmware updates.
iHome Sleep - wake to custom alarms and music playlists.



Troubleshooting

Problem	Possible Solutions
I am unable to connect the iW3 to my home Wi-Fi network.	<ol style="list-style-type: none"> 1. Verify that your Wi-Fi network is functioning and Wi-Fi certified. 2. The iW3 does not support WEP or WPA/WPA2 Enterprise security types. We recommend Open, WPA/WPA2 Personal. Once you change the security type on your router, we suggest rebooting your Wi-Fi router and your iW3 speaker. 3. Make sure your router firmware is up to date. 4. Make sure that your wireless network is not on a conflicting channel with one of your neighbors. You can use software like iStumbler on Mac or Netstumbler on Windows to verify that adjacent networks, sorted by SNR, aren't on the same channel. Channels 1, 6, and 11 are the three non-overlapping 802.11g channels. 5. Move the iW3 closer to your network access point; the Wi-Fi signal is weak or there are overlapping Wi-Fi signals or the iW3 is out of range of your Wi-Fi network. 6. Keep away from potential sources of interference which may affect Wi-Fi signal, such as microwave ovens. 7. Reset the iW3 Hardware and repeat network setup: <ul style="list-style-type: none"> - Using a paper clip, press the iW3 speaker by pressing the Reset Button on the bottom of the speaker within the charging base recess. The iW3 will reboot and power ON again. - Repeat iW3 Wi-Fi Network Setup process if necessary.
I've selected the iW3 speaker as my AirPlay audio source, but I do not hear any music.	<ol style="list-style-type: none"> 1. Verify that the volume is not muted or set to 0. 2. Verify that there is not another iTunes library or iOS device connected to the iW3 speaker. 3. Try restarting iTunes or your iOS device. 4. Reset the iW3 using the Reset button and reboot your Wi-Fi router.
The iW3 doesn't respond or doesn't turn ON.	<ol style="list-style-type: none"> 1. Verify that the adaptor is connected, that the power outlet is live (not controlled by a wall switch), and battery is fully charged. 2. Reset the iW3 speaker using a paper clip to press the Reset Button located on the bottom cabinet.

Troubleshooting

Problem	Possible Solutions
I've successfully connected the iW3 to my home network, but I cannot select the iW3 speaker from iTunes or my iOS Device.	<p>The iW3 speaker must be on the same network as your AirPlay source.</p> <p>iTunes Solutions:</p> <ol style="list-style-type: none"> 1. Make sure that you have the latest version of iTunes. 2. Try restarting iTunes. 3. Before you open iTunes, make sure that you have enabled Bonjour service in your PC. Take Windows XP for example: to enable the service, you can click Start->Settings->Control Panel, and double click Administrative Tools->Services->Bonjour Service, then click Start followed by OK on the pop-up menu. 4. In order for the iW3 to be able to access track controls in iTunes you need to allow it in iTunes: <ul style="list-style-type: none"> - In iTunes, go to Preferences. - In the Devices tab, check "Allow iTunes audio control from remote speaker" <p>iOS device solutions:</p> <ol style="list-style-type: none"> 1. Make sure the iOS device has the latest software. 2. If you're unable to see the Airplay icon on the iOS device, restart your iOS device. 3. Verify that your device is connected to the correct Wi-Fi network. <p>Note: The original iPhone, iPhone 3G, and iPod touch (1st generation) do not support AirPlay.</p>

Visit our website for additional help: www.ihomeaudio.com/support/airplay/

© 2012 SDI Technologies Inc. All rights reserved.
iHome and the iHome logo are registered trademarks of SDI Technologies.
AirPlay, iPad, iPhone, iPod touch, iPod, are registered trademarks of Apple Inc.
TuneIn* is a registered trademark of TuneIn, Inc.
PANDORA* is a registered trademark of Pandora Media Inc.
iHeartRadio* is a registered trademark of Clear Channel Communications, Inc.
Printed in China.

HW 99232011-A

iHome AIR SERIES



iW3 Start Guide

Visit our website for additional help and how-to videos
www.ihomeaudio.com/support/airplay/

