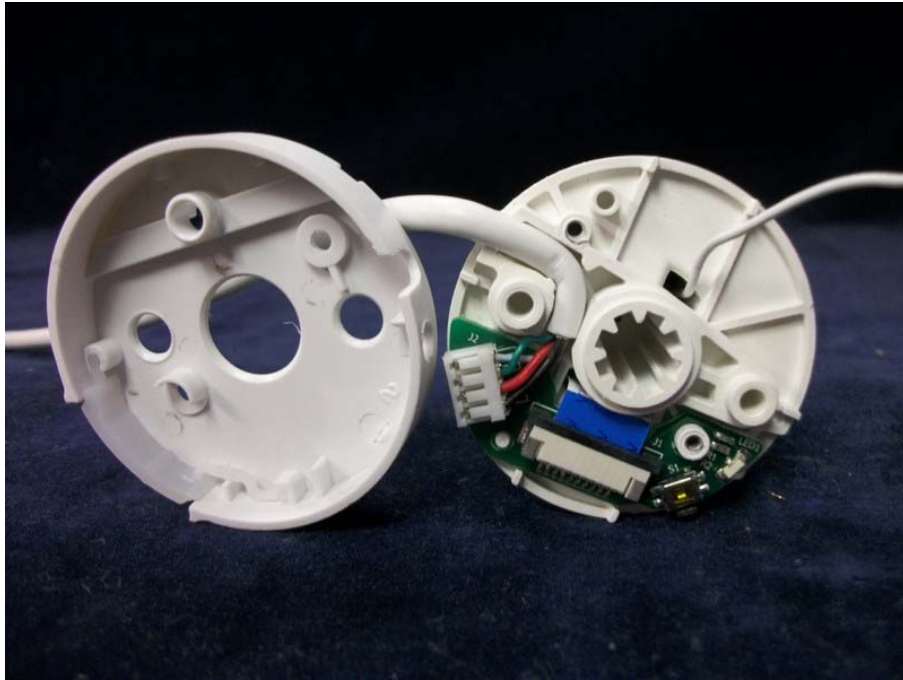
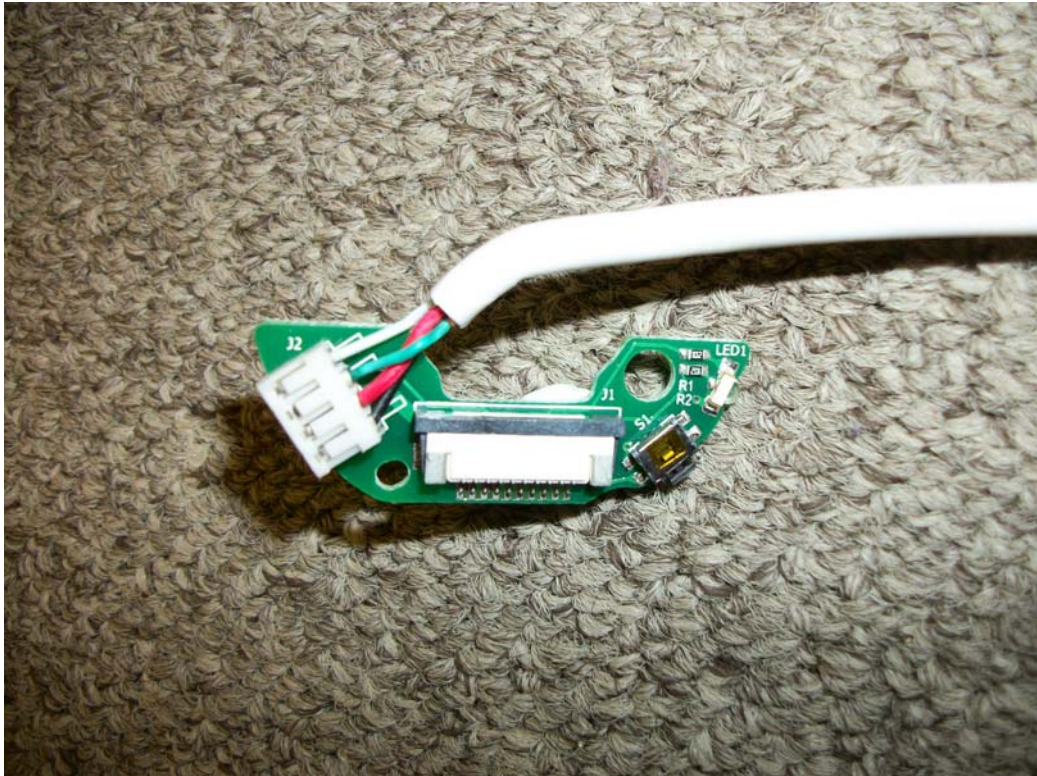


8.3 Open View



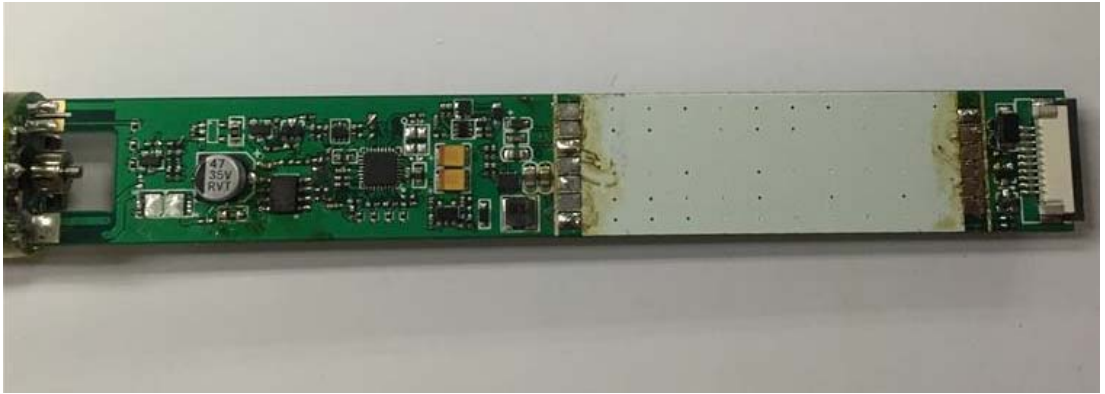
8.4 Local Interface Section



8.5 Local Interface PCB
Board Components Side



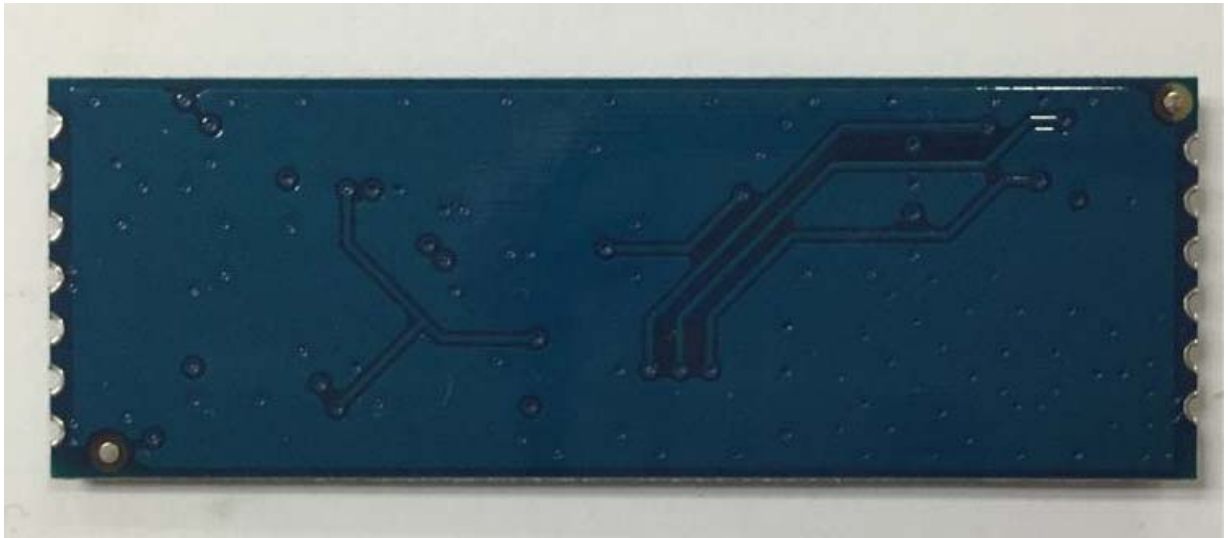
8.6 Local Interface PCB
Board Foil Side



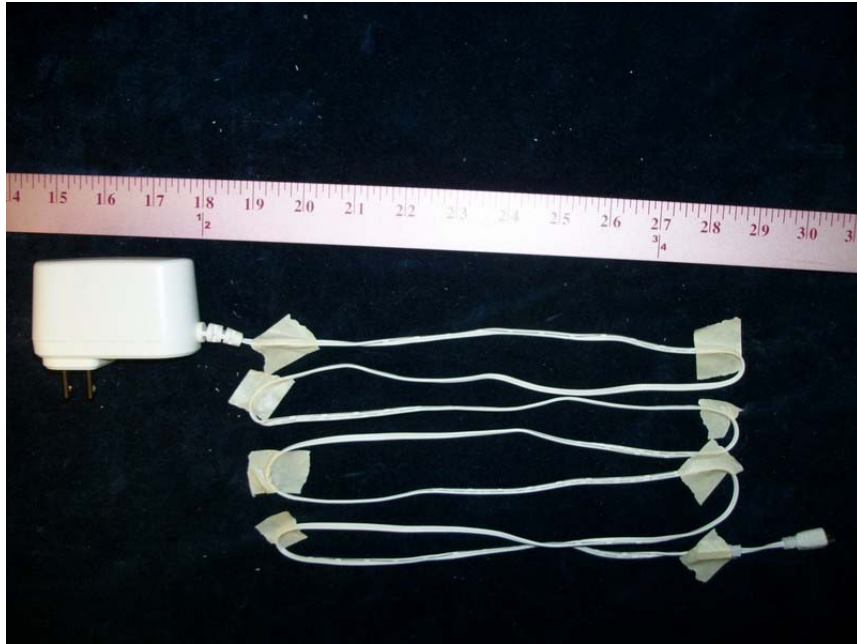
8.7 Serial Motor Drive PCB



8.8 RF Radio PCB Component Side



8.9 RF Radio PCB Foil Side



8.10.1 AC/DC Adaptor View-01



8.10.2 AC/DC Adaptor View-02