

Industriparken 27,  
DK-2750 Ballerup  
Denmark  
Phone: +45 56 18 00 00  
Fax: +45 56 18 00 99  
[www.sennheiser.com](http://www.sennheiser.com)

Ballerup: 09.02.2015

To whom it may concern,

## Declaration of Identity

We, Sennheiser Communications A/S, declare under our sole responsibility that product series

Office Runner ( OR ) , DW & SD are different in a terms of electronics, mechanics & Microsoft Lync software adaptation with the D 10 Series ( It has been used as a reference family for al DECT Series) in Nemko during 2014.

The PCB main (RF PCBoard) design are completely identical in all DECT base stations (SD,DW , D 10 ,OR ,OR Blue ) exactly the same strategy has been followed for the all headsets design.

The PCB main ( RF PCBoard ) is identical in all DECT headsets with the differences in a wearing stile , position of the implemented battery or the headsets speaker numbers ( 1 or 2 speakers )

DECT Series				
D 10 Series	DW Series	OR Series	OR Blue Series	SD Series

Table 1: <sup>1</sup> Products overview

<sup>1</sup>All of the approved products have also different country code as an extension of the name : EU, US, UK, AUS - depends of the Frequency band and the wall cube charge input pins .For more details please see the Appendix I followed by this Declaration



***Yours sincerely***

Edina Mujan  
Regulatory Compliance Manager  
Sennheiser Communications A/S

# Appendix I

## "DECLARATION OF IDENTITY"

Date :09-02-2015

BY Edina Mujan



# Base stations highlighted in RED do have all interfaces

All Base stations have same RF pcb and slightly different shape of the interface boards for the phone or for the PC communications .

	DW BS ( USB interface for softphone) + Phone interface	OR BS Blue (USB interface for softphone) + Phone interface	OR BS (USB interface for softphone) + Phone interface	SD BS (USB interface for softphone) + Phone interface
	DW BS ML (USB interface for softphone) + Phone interface // Certified for MS Lync-ML	Does not exist	Does not exist	SD BS ML (USB interface for softphone) + Phone interface // Certified for MS Lync-ML
D 10 BS PHONE (USB interface only for firmware upgrading)+Phone interface	DW BS PHONE (USB interface BUT ONLY for firmware upgrading)+ ( Phone interface )+	Does not exist	Does not exist	SD BS PHONE (USB interface BUT ONLY for firmware upgrading)+( Phone interface )
D 10 BS USB ( USB interface for softphone)	DW BS USB (USB interface for softphone)	Does not exist	Does not exist	SD BS USB (USB interface for softphone)
D 10 BS USB ML ( USB interface for softphone) // Certified for MS Lync -ML	DW BS USB ML ( USB interface for softphone) - Certified for MS Lync	Does not exist	Does not exist	SD BS USB ML ( USB interface for softphone) - Certified for MS Lync

# DECT families -Certification in NEMKO 2014

- 4 product series on the market (DW, SD, OR , OR Blue) the additional D 10 was introduced in 2014
- DW Series
- SD Series
- D 10 Series
- OR Series
- OR Series Blue



DW Series



OR Series



OR Series Blue



SD Series



D 10 Series

# DECT Base stations front view

## DW BS -US



Figure 1.1: Front side DW BS -US with DW 10 HS

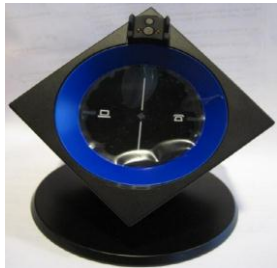


Figure 1.4 : Front side OR BS Blue -US

## SD BS - US



Figure 1.2: Front side SD BS -US with SH 10 HS

## D 10 BS PHONE-US

Greenfield | blade

. front / safe  
. clean, reduced look  
. recognizable



Figure 1.3 : Front side D 10 BS -US with SH 10 HS

# DECT Base stations phone /USB interfaces view

DW BS USB -US

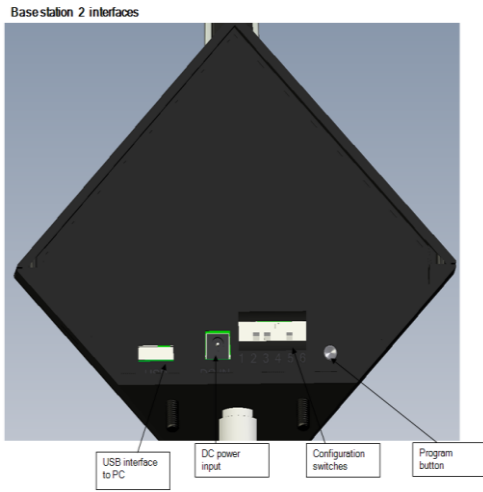


Figure 2.1: Back side DW BS USB -US

SD BS USB - US



Figure 2.2: Back side SD BS USB -US

D 10 BS USB - US



Figure 2.3: Back side D 10 BS USB -US



Figure 2.4: Back side DW BS -US

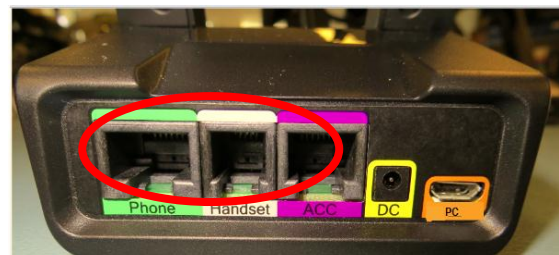


Figure 2.5: Back side SD BS -US



Figure 2.6: Back side D 10 BS PHONE -US

# Differences

## DW BS-US

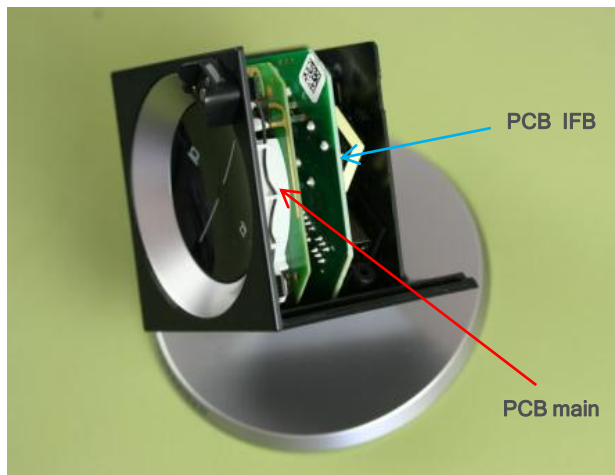


Figure 1.7: Cross section view of DW BS-US

## SD BS -US

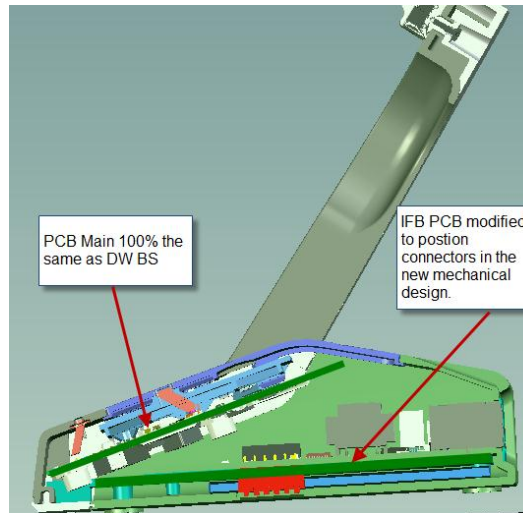


Figure 1.8 : Cross section view of SD BS -US

## D 10 BS PHONE -US

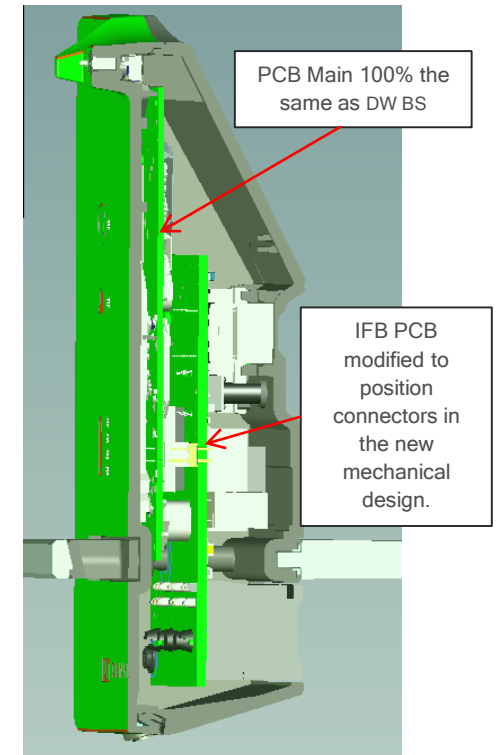


Figure 1.9 : Cross section view of D 10 BS PHOBE-US

# Differences

## DW BS-US

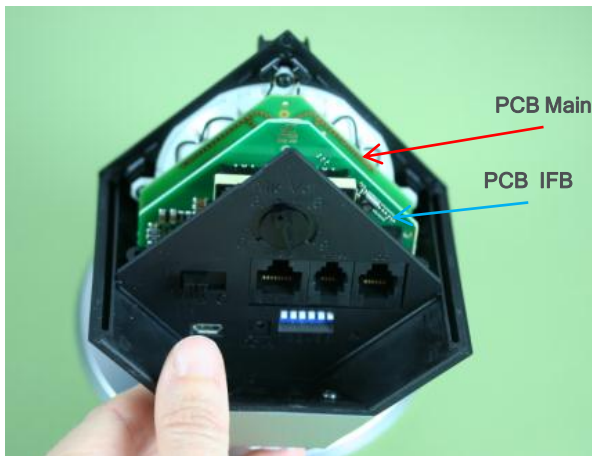


Figure 3.1: Inner side of DW BS-US

## SD BS-US

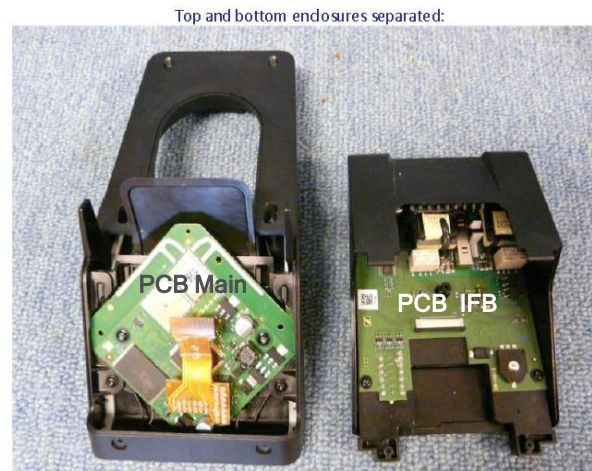


Figure 3.2: Inner side of SD BS-US

## D 10 BS PHONE-US

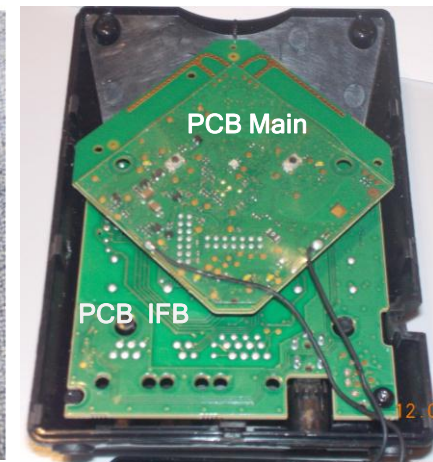


Figure 3.3: Inner side of D 10 BS PHONE-US

# Differences

## DW BS-US

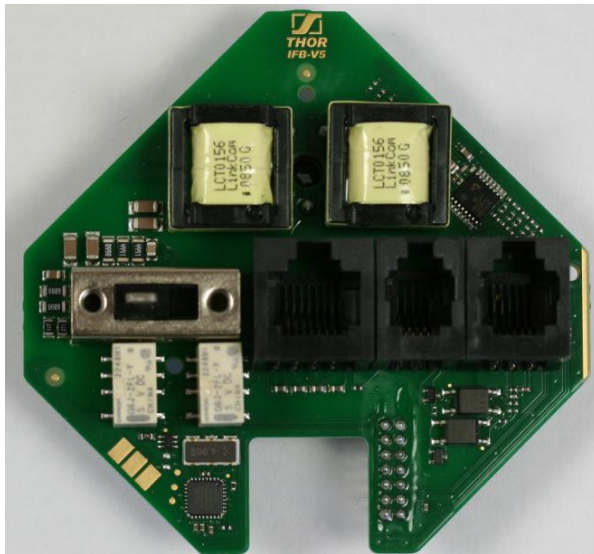


Figure 4.1: PCB IFB top view DW BS - US

## SD BS -US

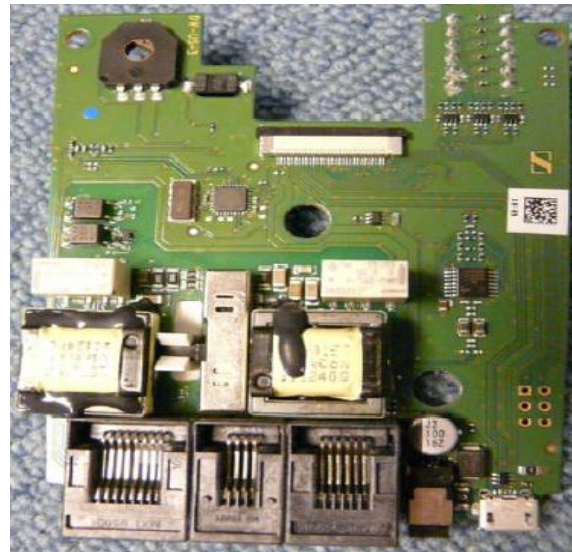


Figure 4.2: IFB PCB top view in SD BS - US

## D 10 BS PHONE -US



Figure 4.3: New IFB PCB top view in D 10 BS PHONE-US

# Differences

## DW BS-US

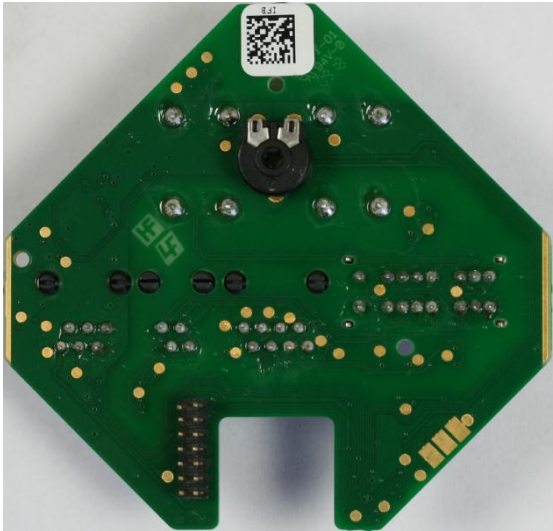


Figure 5.1: PCB IFB Bottom view DW BS -US

## SD BS -US



Figure 5.2: IFB PCB bottom view in SD BS-US

## D 10 BS PHONE-US

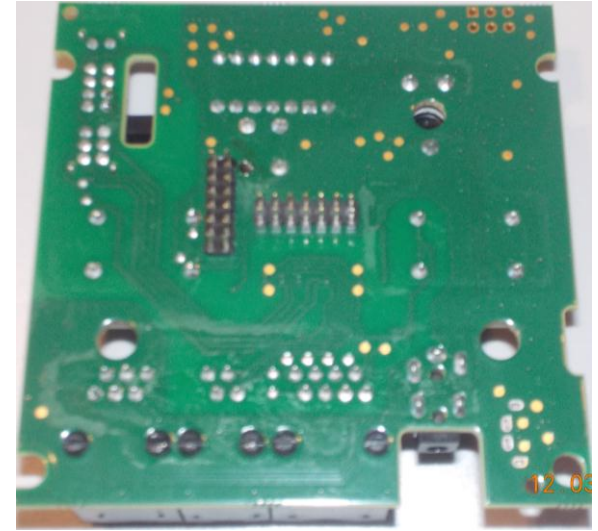


Figure 5.3: New IFB PCB bottom view in D 10 BS PHONE-US

## DW BS -US

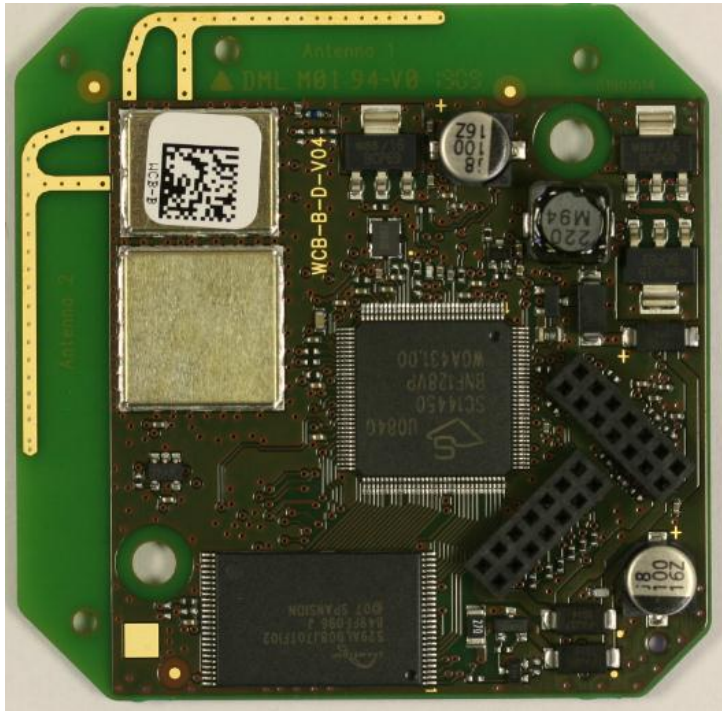
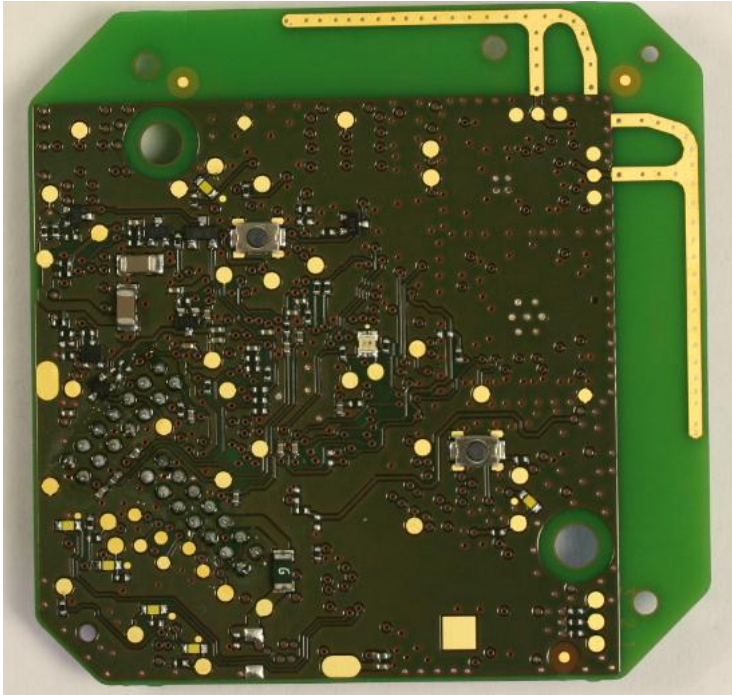


Figure 6.1: PCB Main top view DW BS -US

## SD BS & D10 BS PHONE-US

100% same  
This is the radio and  
antenna PCB

## DW BS-US



## SD BS -US& D 10 BS PHONE-US

100% same.  
This is the radio and  
antenna PCB

Figure 7.1 PCB Main bottom view DW BS -US

# The Headsets -Declaration of identity

The Headsets have different mechanical form factor



DW 10 HS



DW 20 HS



DW 30 HS



OR 10 HS

*Does not exist*

*Does not exist*



OR 10 HS

OR 20 HS  
OR 20 Blue HS

OR 30 HS  
OR 30 Blue HS



SD 10 HS



SD 20 HS



SD 30 HS



D 10 HS

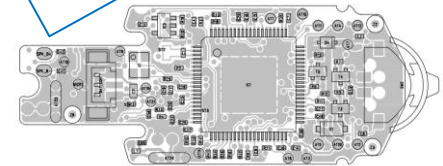
*Does not exist*

*Does not exist*

D 20 HS

D 30 HS

*100% same in all products*



Electronics & Print Card

# The Headsets -Declaration of identity

The Headsets have different mechanical form factor



DW 10 HS  
D 10 HS  
OR 10 HS  
OR 10 Blue-HS  
SD 10 HS



Electronics & Print Card

DW 20 HS  
SD 20 HS



Electronics & Print Card

DW 30 HS  
SD 30 HS