

A

B

C

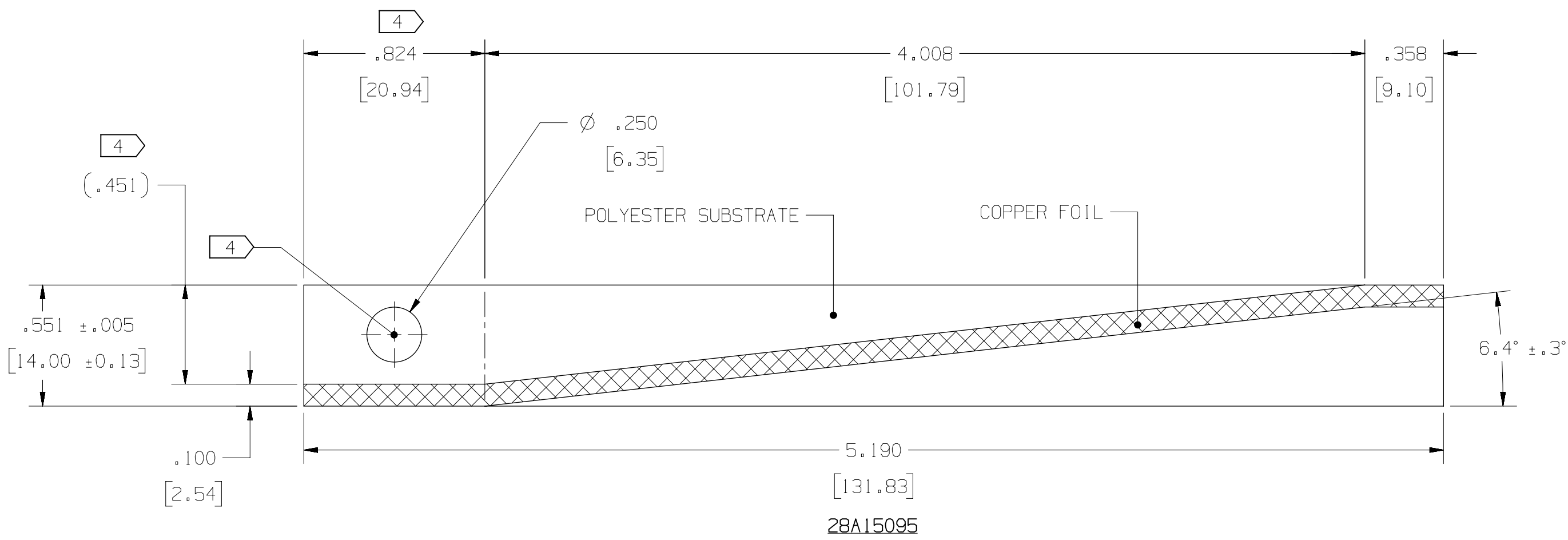
D

E

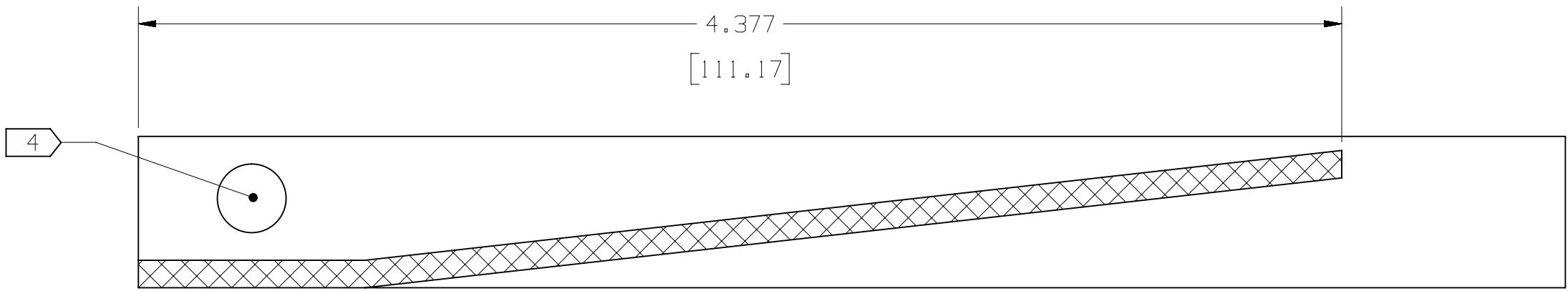
F

G

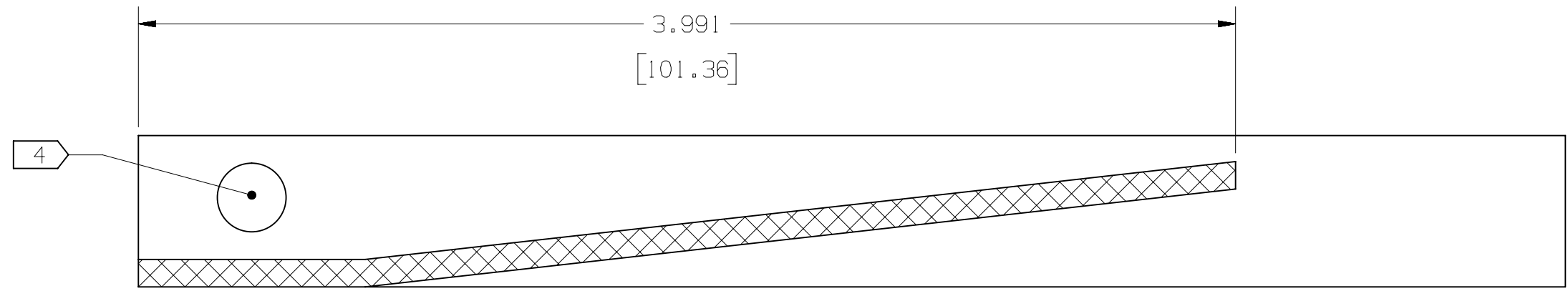
H



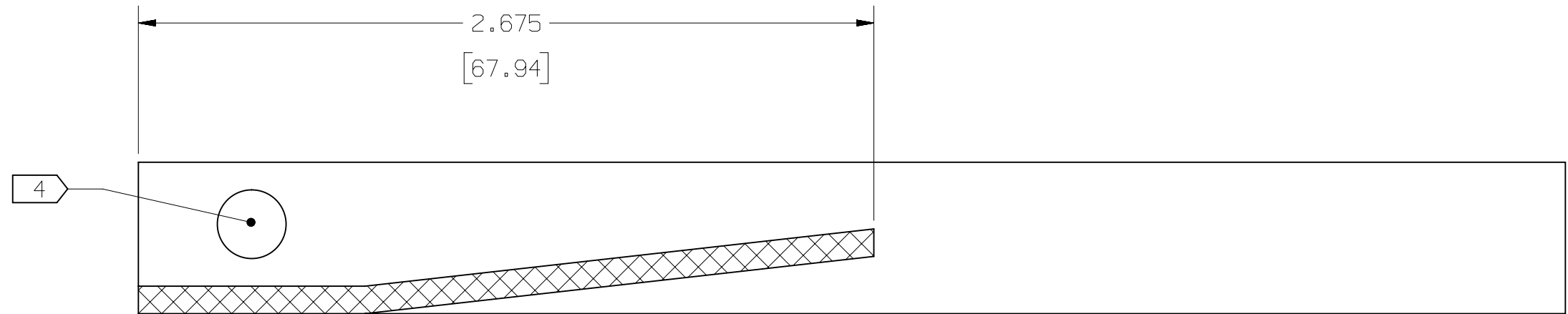
28A15095



28B15095



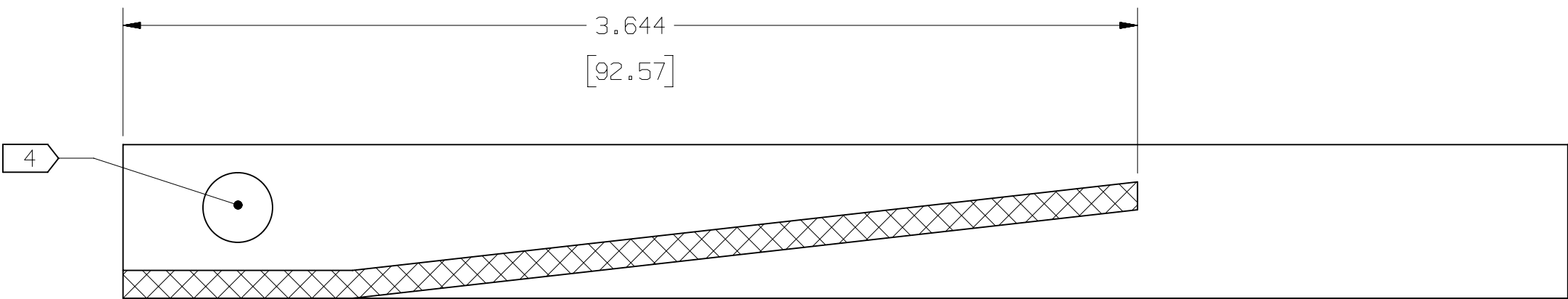
28C15095



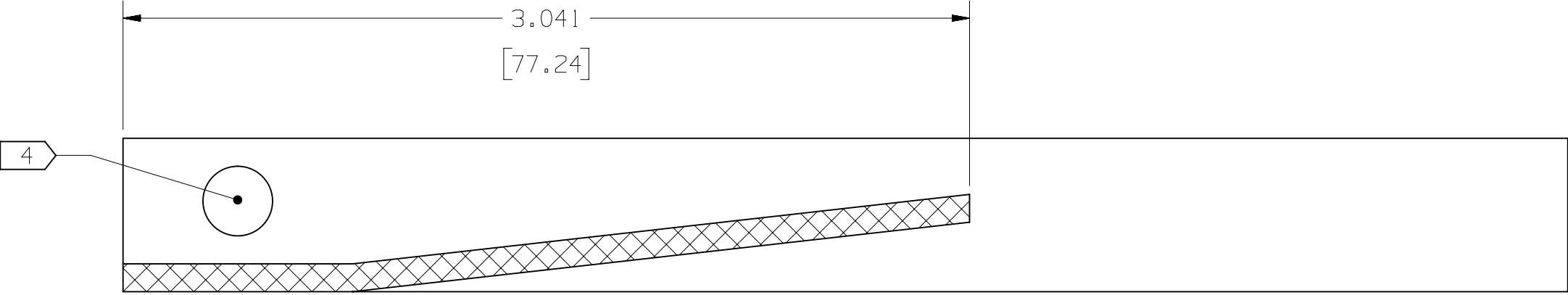
28G15095

NOTES UNLESS OTHERWISE SPECIFIED:

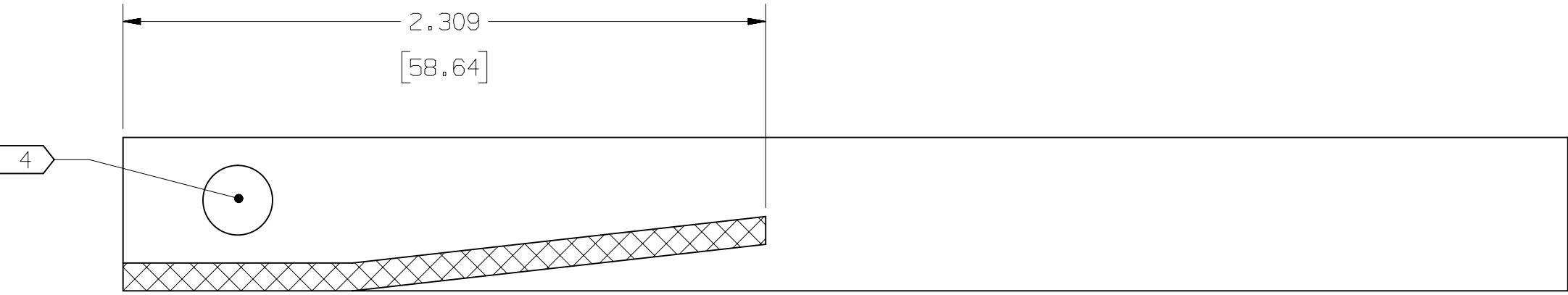
- DIMENSIONS INDICATED IN BRACKETS [mm] REPRESENT COMPARABLE METRIC CONVERSION FOR REFERENCE USE
- MUST MEET SUPPLIER QUALITY REQUIREMENTS PER LATEST SHURE INCORPORATED INCOMING INSPECTION INSTRUCTIONS
- MATERIAL: POLYESTER SUBSTRATE WITH TIN PLATED COPPER FOIL LAMINATION. MATERIAL THICKNESS TO BE .008 MAX
- LABEL TO BE SUPPLIED WITH VINYL COLOR TAPE INDICATING FREQUENCY PER THE TABLE SHOWN. TAPE TO BE NO GREATER THAN .008 (0.20) THICK AND BE CENTERED WITHIN DIMENSIONS INDICATED.
- PART TO BE PER APPLICABLE PART NUMBER IN THE TABLE SHOWN
- PARTS TO BE SUPPLIED WITH PRESSURE SENSITIVE ADHESIVE PER 3M 9471. ADHESIVE TO BE APPLIED TO SIDE OPPOSITE FOIL LAMINATION AND COLOR STICKER.



28D15095



28E15095



28F15095

PART NO.	FREQUENCY (MHz)	COLOR CODE
28A15095	470-534	RED
28B15095	534-598	BLUE
28C15095	572-636	GREEN
28D15095	606-696	BLACK
28E15095	710-814	YELLOW
28F15095	925-952	WHITE
28G15095	823-865	ORANGE
28H15095	1,240-1,260	PURPLE
28J15095	1,492-1,525	LIGHT BLUE
28K15095	1,785-1,805	DARK BROWN

NOTES: - NX CAD MODEL - DO NOT SCALE
- MUST CONFORM TO ENVIRONMENTAL COMPLIANCE SPEC - 64278
- ALL DIMENSIONS IN INCHES UNLESS OTHERWISE SPECIFIED

NOTICE

THIS DRAWING IS THE PROPERTY OF SHURE INCORPORATED AND IS DISCLOSED TO YOU IN STRICT CONFIDENCE AND WITH THE UNDERSTANDING THAT IT IS NOT TO BE REPRODUCED, COPIED, OR USED EXCEPT FOR THE PURPOSE OF PRODUCING TOOLS OR PRODUCTS EXCLUSIVELY FOR SHURE INCORPORATED. COPIES OF THIS DRAWING ARE TO BE MADE ONLY WHEN NECESSARY FOR THE PURPOSE STATED ABOVE AND ALL COPIES MUST CONTAIN THIS NOTICE. THIS DRAWING AND ALL COPIES MUST BE RETURNED ON REQUEST.

DRAWING NO:		
28-15095		
REVISION RECORD		
R E V	DESCRIPTION OF CHANGE	Z O N E
A	RELEASE FOR QUOTATION M COSTER 08/06/2010	
B	CHG VINYL SUBSTRATE TO POLYESTER HEW OPTION 2 FROM DWG CHG COPPER DESIGN TO MAINTAIN CONSTANT THICKNESS M COSTER 08/12/2010	
C	MODIFIED VERSION 1 AND CREATED NEW VERSION 2 M COSTER 08/16/2010	
D	REMOVED CIRCULAR TAB AND "VERSION 1" DESIGN FROM DRAWING M COSTER 08/25/2010	
00	ADDED PART VARIANTS B-F ADDED FREQ MARKINGS ON EACH VARIANT ADDED NOTE 6 AND TABLE M COSTER 10/22/2010	
01	REVISED COPPER-CUT VALUES FOR VARIANTS B-F 100 DIM ADDED M COSTER 10/22/2010	C1
02	DEVELOPMENT RELEASE .551±.005 WAS .551±.015 REMOVED COLOR CODE COLUMN FROM TABLE M COSTER 03/07/2011	C1
03	REMOVED LASER ETCHING PER FREQ ADDED COLOR TAPE TO ALL VARIANTS MODIFIED NOTE 5 ADDED COLOR CODE COLUMN TO TABLE NOTE 4 REMOVED, RENUMBERED NOTES M COSTER 04/18/2011	
04	CHANGED FROM RECTANGULAR COLOR TAPE TO CIRCULAR COLOR TAPE M COSTER 04/18/2011	
05	ADDED CROSSHATCHED AREA FOR COLOR TAPE CIRCLE ADDED REF DIM (1.451) MODIFIED NOTE 4 M COSTER 04/21/2011	C2 B1
06	PRODUCTION RELEASE REF 1SR-9116 M COSTER 09/23/2011	
07	1003425 PRODUCTION RELEASE ADD 28G15095 FOURNIWI 07/11/2013	H6
08	1009015 (REF) DEVELOPMENT RELEASE 28H15095- 28K15095 01/15/2015	
09	1009015 PRODUCTION RELEASE 28H, 28J, 28K REF 1SR-14581 ADDED NOTE 6 FOR CLARIFICATION; NO CHANGE TO PHYSICAL PARTS. COSTERM 06/24/2015	
10	1012027 PRODUCTION RELEASE ADDED TOLERANCES TO ANGLE DIMENSIONS R WEEGE 11/23/2015	DB6 244

SHURE® 5800 W TOLUHY AVENUE
NILES, IL 60714-4608
847-600-2000
WWW.SHURE.COM

CONFIDENTIAL		3RD ANGLE
© 2010-2015 SHURE INCORPORATED		
DRN: M COSTER	08/06/2010	
CHK: A DUNMIRE	09/29/2011	
APP: R SZOPKO	09/23/2011	FIRST USED IN: ULX02

DESCRIPTION:	
LABEL, ANTENNA	
MATL:	FINISH:
NOTE 3	N/A
DWG NO:	REV
28-15095	10
PROJ:	SCALE:
17683	2 : 1
SHEET:	SIZE
1 OF 2	D

