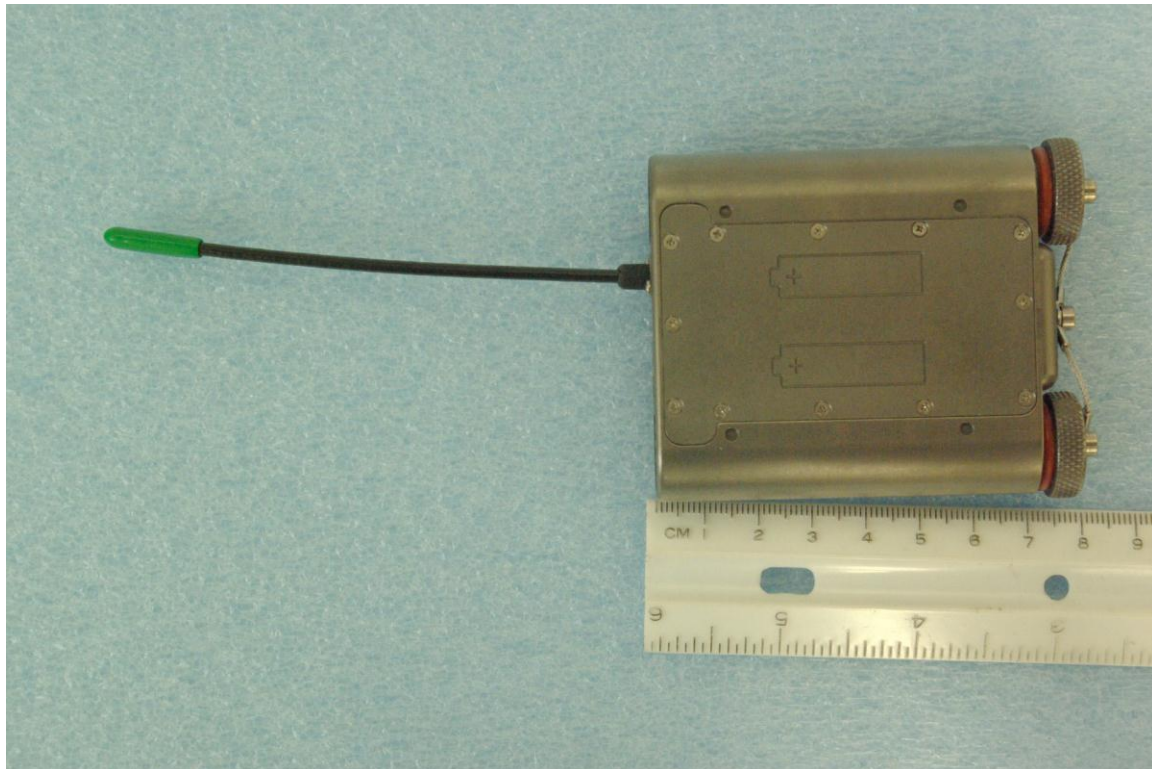
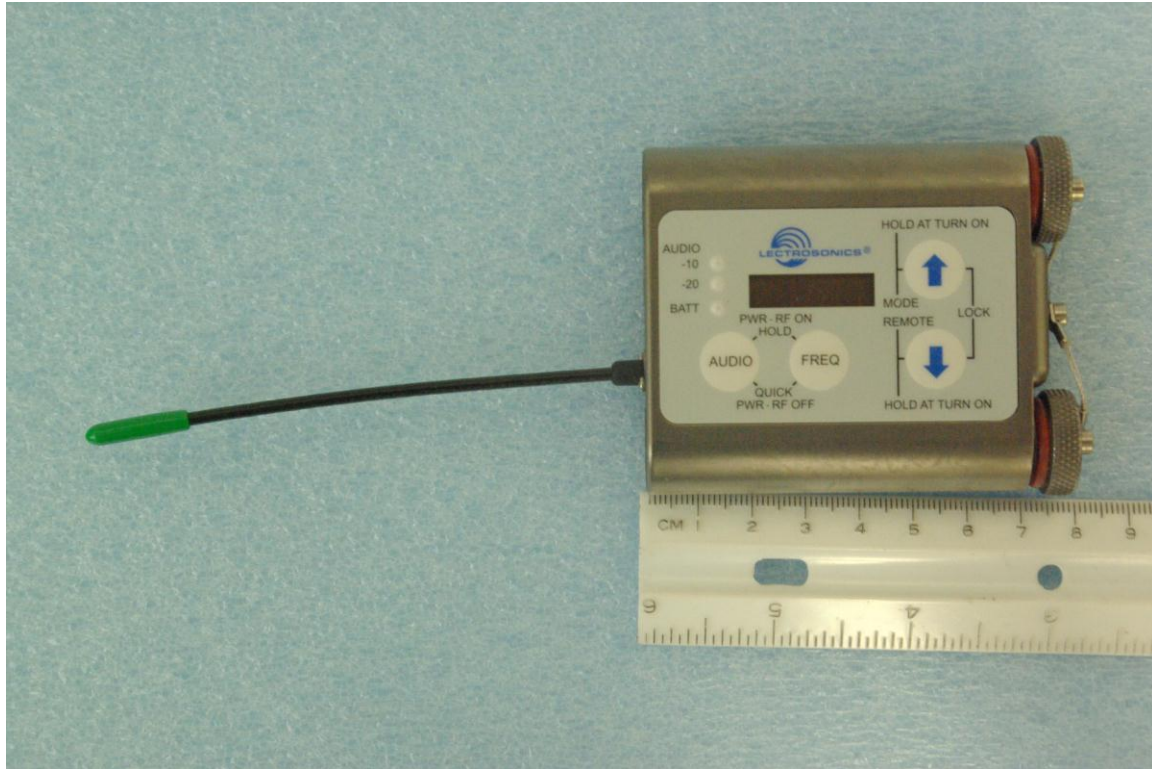


External photographs of equipment under test



Rogers Labs, Inc.
4405 West 259TH Terrace
Louisburg, KS 66053
Phone/Fax: (913) 837-3214
Revision 1

Lectrosonics, Inc.
Model: WME
Test #: 120312E
Test to: CFR47 Parts 2 & 74H, RSS-123, Issue 2
File: ExtPho WME

IC: 8024A-WME
FCC ID: DBZWME
SN: 118, 101, 103
Date: April 16, 2012
Page 1 of 2



Rogers Labs, Inc.
4405 West 259TH Terrace
Louisburg, KS 66053
Phone/Fax: (913) 837-3214
Revision 1

Lectrosionics, Inc.
Model: WME
Test #: 120312E
Test to: CFR47 Parts 2 & 74H, RSS-123, Issue 2
File: ExtPho WME

IC: 8024A-WME
FCC ID: DBZWME
SN: 118, 101, 103
Date: April 16, 2012
Page 2 of 2