



2

LIFEPAK® CR2 Defibrillator

with LIFE LINKcentral™ AED Program Manager

Wireless Setup Guide



Please ensure the LIFEPAK CR2 Defibrillator is ‘Connected and Ready’ for use in an emergency by following these simple instructions.

Before You Begin

Determine your defibrillator type

Follow the Getting Started Guide provided with the defibrillator and determine what type of defibrillator you have:

- USB only
- Wi-Fi® and USB
- Wi-Fi, cellular, and USB

If the defibrillator is USB only, do not attempt this procedure.

Note: In this guide, the term “AED” (Automated External Defibrillator) is used to refer to the defibrillator.

Determine your online account type

You should have an account on one of the following two websites.

- LIFELINKcentral AED Program Manager, or
- LIFENET® System

Many health care organizations have existing LIFENET System accounts to manage their devices. If your organization has a LIFENET System account, do not use this setup guide. Instead, log in to your account and download the Wireless Setup Guide for LIFEPAK CR2 defibrillators from the Resource Center.

If you do not have a LIFENET System account, follow this setup guide and use LIFELINKcentral AED Program Manager to set up your AED.

Wireless Setup Overview

A typical wireless setup takes 10-20 minutes.

The following pages will guide you through these steps:

- Download a software application from a website to your computer.
- Run the application on your computer to load Wi-Fi network settings into the AED.
- Connect the AED to the wireless network at its intended location.
- Confirm the AED status in your online account.

Note: Physio-Control recommends that all LIFEPAK CR2 AEDs with Wi-Fi capability be set up with a Wi-Fi network, even if the AED also has cellular capability.

Pre-installation Checklist

a. Set up your LIFEPAK CR2 Defibrillator (AED) as instructed in the Getting Started Guide and verify the Readiness indicator is flashing.

b. Confirm that the intended location for the AED has a good connection to the Wi-Fi network.

Test the signal strength of the Wi-Fi network at the intended AED location using a different Wi-Fi device such as a smartphone.

c. Identify the Wi-Fi network information you will need to connect the AED to the network.

NETWORK NAME: _____

SECURITY KEY: _____

d. Confirm that you have a PC with internet access and Windows® 7 or above operating system. You will need Administrator rights on the PC.

e. Locate the USB cable included in the shipping box.

f. Review the separation distance and RF Exposure information found in Appendix F: Electromagnetic Compatibility Guidance of the Operating Instructions to ensure a distance of 3 cm (1.18 inch) throughout the setup.

FAQs

Q: I need to set up multiple AEDs at locations that have different Wi-Fi networks. What should I do?

A: In step c above, identify the network information for each Wi-Fi network.

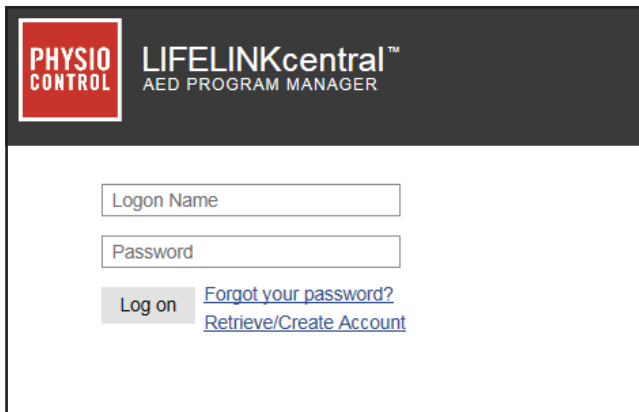
Q: I want to skip the Wi-Fi setup and only test the cellular connection. How do I do that?

A: Skip steps b through e above, and begin this procedure at step 4.

1

Log in to your LIFELINKcentral AED Program Manager account.

Use the logon name and password from your “Welcome to LIFELINKcentral” email to log in.

The screenshot shows the login interface for the LIFELINKcentral AED Program Manager. At the top left is the 'PHYSIO CONTROL' logo in a red square. To its right, the text 'LIFELINKcentral™' is displayed in a large, bold, sans-serif font, with 'AED PROGRAM MANAGER' in a smaller font below it. The main area contains two input fields: 'Logon Name' and 'Password'. Below these fields is a 'Log on' button. To the right of the button are two links: 'Forgot your password?' and 'Retrieve/Create Account', both underlined and in blue text.

FAQs

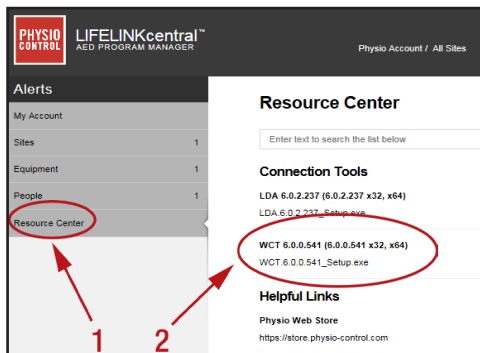
Q: I did not receive an email with my logon name and password. What should I do?


A: Check to see if the email was sent to another person in your organization. If you cannot find the email, look up the appropriate web address for your country in the contact list included with this guide. Go to the website to create your account.

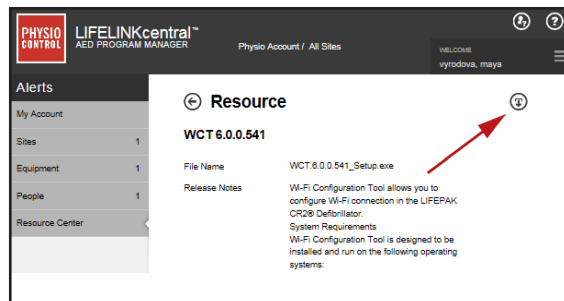
2

Download and install the Wi-Fi Configuration Tool to your PC.

- a. Select **Resource Center** and then select **Wi-Fi Configuration Tool**.



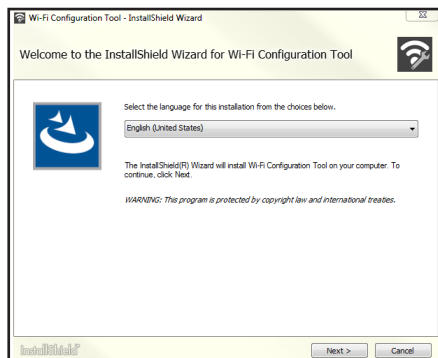
- b. Click the  icon in the upper right corner of the screen to download the Wi-Fi Configuration Tool.



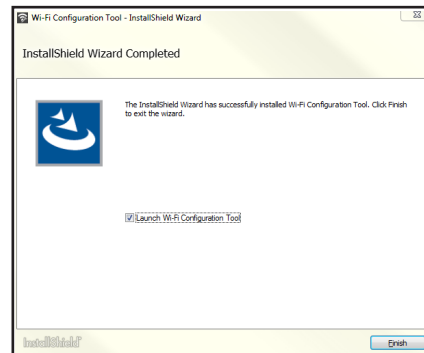
- c. After the Wi-Fi Configuration Tool has downloaded, double-click the **WCT.xxxxx_Setup.exe** file to install it. If you don't see the file, look in your Downloads folder.

If any security warnings appear, select the option to allow the file.

The **InstallShield Wizard** will appear. Select your language and click **Next>**.



- d. When you see the **InstallShield Wizard Completed** screen, make sure the **Launch Wi-Fi Configuration Tool** checkbox is selected, and then click **Finish**.



FAQs

Q: My computer rebooted during the installation process. Is this okay?

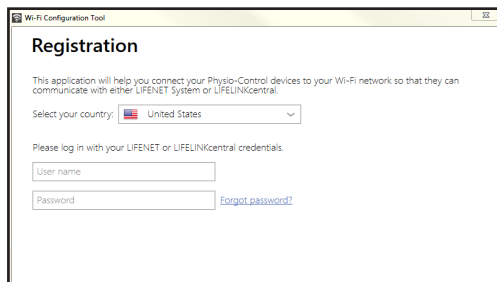
A: Yes. If your computer reboots, installation should continue automatically.

3

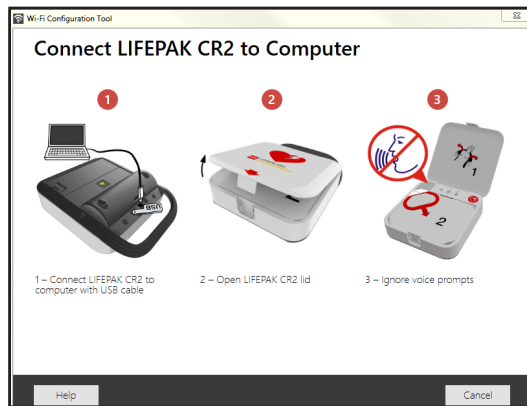
Run the Wi-Fi Configuration Tool and follow the onscreen instructions.

This step loads your Wi-Fi network settings into the AED.

- a. In the **Registration** screen, select your country and enter your user name and password. This is the same logon name and password you use to log in to LIFELINKcentral AED Program Manager.

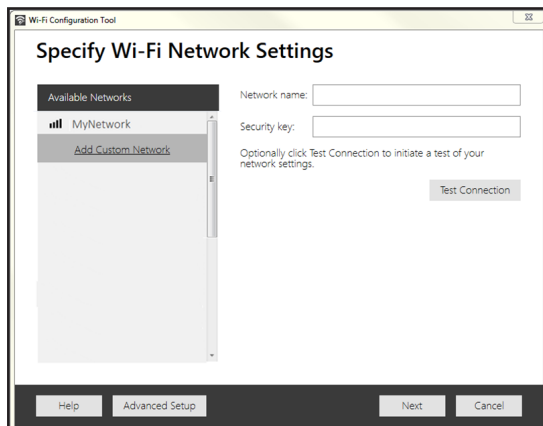


- b. When you are instructed to **Connect LIFEPAK CR2 to Computer**, use the USB cable included in the shipping box.

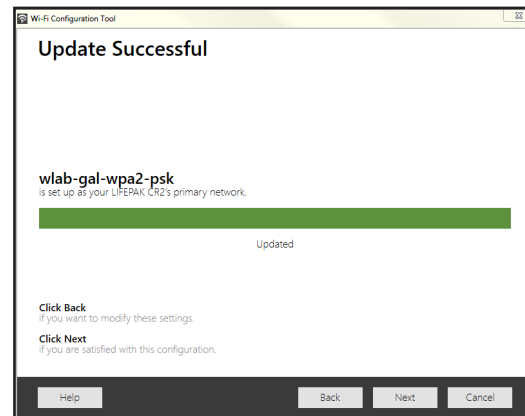


- c. Continue to follow all onscreen instructions and click **Next**.

- d. In the **Specify Wi-Fi Network Settings** screen, select a network or click **Add Custom Network** to enter your Wi-Fi network settings. Click **Next** to apply the settings.



- e. When the Wi-Fi setup is complete, you will see the **Update Successful** screen.



- f. Click **Next**, disconnect the USB cable, and then click **Close**.

FAQs

Q: I closed the Wi-Fi Configuration Tool and need to open it again. Where can I find it?

A: Open the **Start** menu on your computer, and open the **Physio-Control** folder. Click **Wi-Fi Configuration Tool**.

4

Take the AED to its intended location and test the wireless connection.

- a. Take the AED to its intended location.
- b. Open the lid and *wait* until the voice prompts start.



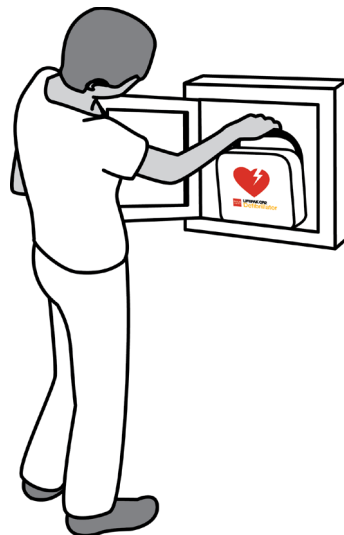
- c. *Immediately* press and hold the **LANGUAGE** and **CHILD MODE** buttons simultaneously until you hear “**Device ready.**”



- d. Immediately:
 - Close the lid
 - Place the AED in its permanent storage location (for example, cabinet or vehicle)
 - Close the door of the cabinet or vehicle

The AED will attempt a wireless connection and it must be in its permanent location during this test.

Note: Follow these instructions whenever initiating or testing a wireless connection and maintain a distance of 3 cm (1.18 inch) to ensure compliance with RF exposure requirements.



-
- e. If you hear **“Wi-Fi connection initiated,”** go to step 5.
If you hear **“Mobile connection initiated,”** go to step 6.



FAQs

Q: I pressed both buttons, but never heard the **“Device ready”** prompt.

A: When you open the lid, you must ***wait*** until the voice prompts start before pressing the two buttons. After the voice prompts start, you must press the two buttons ***within 10 seconds***. If you miss these time limits, the AED proceeds as it would during a cardiac arrest.
To try again, close and reopen the lid.

Q: I heard **“Device not ready.”** What should I do?

A: This means the AED is not ready for a cardiac emergency. Continue with the rest of the wireless setup. When you are finished, contact Physio-Control Customer Support for assistance.

5

Confirm the Wi-Fi Connection

With the AED in its permanent location, listen for the following voice prompts:

- a. **“Wi-Fi connection initiated,”** followed by **“Connection in progress.”** There will be a pause while the AED connects.
- b. **“Connection established.”**
Once a Wi-Fi connection is established, the AED will update your online account with its current status. The AED beeps every few seconds during the update process.
- c. When all updates are complete, you will hear **“Communication complete.”**
 - If the AED does not have cellular capability, you will hear **“Powering off.”** Continue with step 7.
 - If the AED has cellular capability, continue with step 6.



FAQs

Q: I heard **“Unable to establish Wi-Fi network connection.”** What should I do?

A: This may mean that the signal strength at your location is not strong enough to connect the AED to the Wi-Fi network. After you hear **“Powering off,”** move the AED installation closer to your Wi-Fi access point and try again. If you need assistance, contact Physio-Control Customer Support.

Q: I heard **“Wi-Fi not configured,”** and I want to use a Wi-Fi network. What should I do?

A: Repeat step 3, or contact Physio-Control Customer Support for assistance.

6

Confirm the cellular connection, if applicable.

If your AED has cellular capability, it will attempt a cellular connection immediately after the Wi-Fi connection in step 5. This occurs whether or not the Wi-Fi connection was successful. Listen for the following voice prompts:

- a. **“Mobile connection initiated,”** followed by **“Connection in progress.”** There will be a pause while the AED connects.

- b. **“Connection established.”**

Once a cellular connection is established, the AED will update your online account with its current status. The AED beeps every few seconds during the update process.

Note: If your account was already updated during the Wi-Fi connection, the updates are not repeated.

- c. When all updates are complete, you will hear **“Communication complete,”** followed by **“Powering Off.”**



FAQs

Q: I heard **“Unable to establish mobile network connection.”** What should I do?

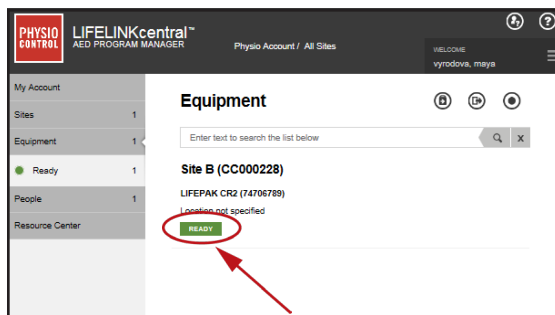
A: This may mean that the signal strength at your location is not strong enough to connect the AED to the cellular network. If possible, move the AED installation and try again. If you need assistance, contact Physio-Control Customer Support.

7

Return to your computer, log in to your account, and verify that the AED is ready.

Note: See step 1 for information about logging in to your account.

Go to the **Equipment** page and verify that the status of your AED says **'Ready'** in green.



8

The wireless setup is now complete.

Please return to step 9 in the **Getting Started Guide** for instructions about storing your AED. The Getting Started Guide also has important information about training options and AED maintenance.

RF Exposure Information

The LIFEPAK CR2 defibrillator is designed and manufactured to not exceed the emission limits for exposure to radio frequency (RF) energy set by the Federal Communication Commission (FCC) of the U.S. Government, the Industry Canada (IC) and the Council of the European Union (CE)

The exposure standards for wireless devices employ a unit of measurement known as the Specific Absorption Rate (SAR). The SAR limits are shown in the table below.

	FCC/IC (1g)	EU (10g)
Limit	1.6 W/kg	2.0 W/kg
The Highest Reported Body Value (3 cm gap)	< 1.0 W/kg	< 0.8 W/kg

The maximum SAR level of this device is below the limits. Nevertheless, this device should be used in such a manner that the potential for human contact during wireless data transmission is minimized.

Note: When carrying or using the device, maintain a distance of 3 cm (1.18 inch) to ensure compliance with RF exposure requirements.

How to get help.

If you need assistance, contact Physio-Control Customer Support. See the contact list included with this guide for region-specific phone numbers. When you call, be prepared to provide your AED serial number (recorded in step 4 of the Getting Started Guide).



Stryker
Emergency Care
PO Box 97006
Redmond, WA 98073-9706
USA

+ 1 800 STRYKER
+ 1 800 787 9537
+ 1 425 867 4000
stryker.com/emergencycare

Copyright © 2023 Stryker

