



LICC Manufacturing Company (Far East) Limited

B7, 18/F., Kong Nam Industrial Building, 603-609 Castle Peak Road, Tsuen Wan, N.T., Hong Kong
Tel.: (852)2416-7569 Fax : (852)2412-0059 E-mail : doc_center@licchk.com



Date : Apr.,24, 2017
Equipment Authorization Division
Office of Engineering and Technology
Federal Communications Commission
7435 Oakland Mills Road
Columbia, MD 21046

Dear Sirs:

LICC Manufacturing Co. (Far East) Ltd. requests acceptance of the labeling proposal described below for (I-lasso R201) bearing FCC identifier FCC ID: CWHPTT200M.

The subject (I-lasso R201) models as shown in figure 1, authorized under FCC Part 15 Subpart C

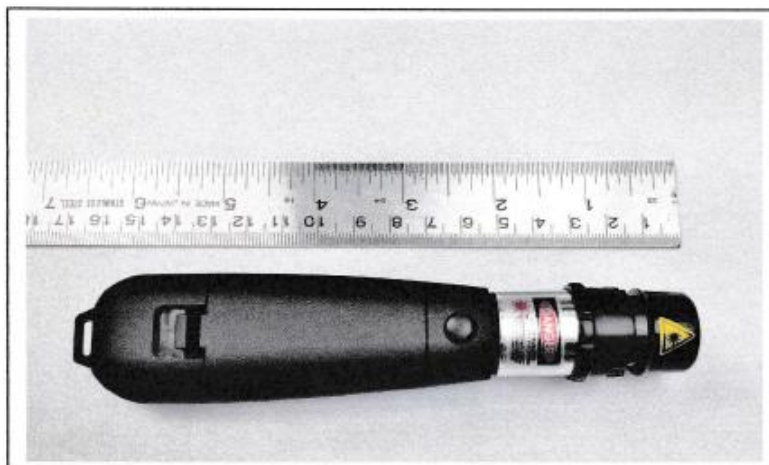


figure 1



LICC Manufacturing Company (Far East) Limited

B7, 18/F., Kong Nam Industrial Building, 603-609 Castle Peak Road, Tsuen Wan, N.T., Hong Kong
Tel.: (852)2416-7569 Fax : (852)2412-0059 E-mail : doc_center@licchk.com




It is because the surface of the device does not enough to indicate the FCC statement. For this reason, LICC Manufacturing Co. (Far East) Ltd. proposes those statements is showing on the user manual and the device is carrying the FCC ID number only. The figure2 is showing the FCC ID location.



figure 2

Sincerely,

LICC Manufacturing Co. (Far East) Ltd.


Louis Y Leung
CEO