

## APPENDIX 7

### Equipment Identification Label Photographs of Remote Unit Transmitter Drawings of Remote Unit Transmitter Boards\*

**\*Note:** *Due to the small size of the boards and their components, and the consequent difficulty of distinguishing components on a photograph, Manufacturing Drawings showing component locations are provided in lieu of photographs.*

blank

**Equipment Identification Label**

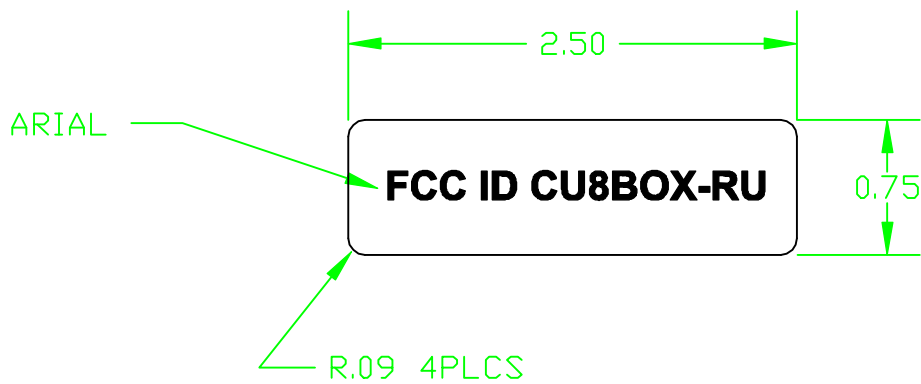


# REVISIONS

REV.	DESCRIPTION	DATE	APPROVED
------	-------------	------	----------

## NOTES:

1. ADHESIVE: 3M #9568 PRESSURE SENSITIVE APPLIED TO BACK OF LABEL.
2. TEXT HEIGHT: .16 , FONT: ARIAL BOLD




## APPLICATIONS

UNLESS OTHERWISE SPECIFIED  
DIMENSIONS ARE IN INCHES  
TOLERANCES ARE:  
FRACTIONS DECIMALS ANGLES  
 $\pm 1/16$  .XX $\pm .01$   $\pm 1^\circ$   
.XXX $\pm .005$

MATERIAL:  
.008" THK ANODIZED  
ALUM. WITH MATTE  
FINISH

SURFACE FINISH: ☒

FINISH:  
PHOTO ANDOIZED  
BLACK LETTERS

DRAWN

J.EVERETTE

3-1-00

APPROVALS

DATE

DRAFTING

DESIGNER

MANUFACTURING



**FAIRFIELD**  
INDUSTRIES

DWG TITLE:

LABEL, FCC ID, REMOTE UNIT

SIZE DWG NO

A 100.6012

REV

-

SCALE 1=1

DO NOT SCALE DRAWING

SHEET 1 OF 1

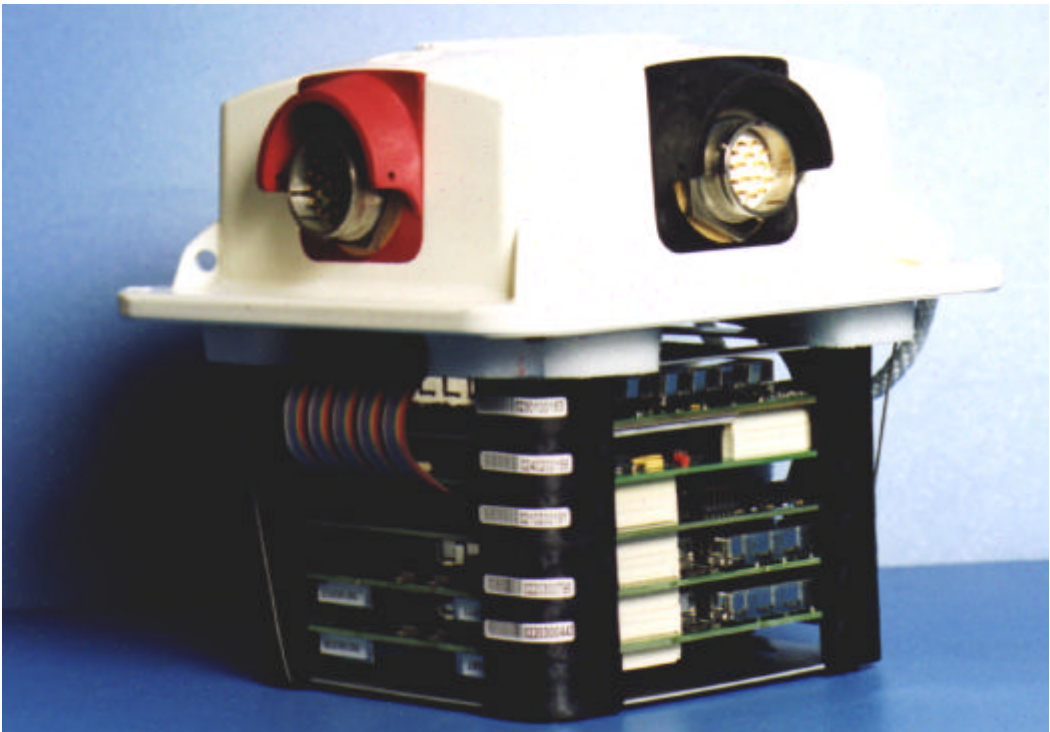
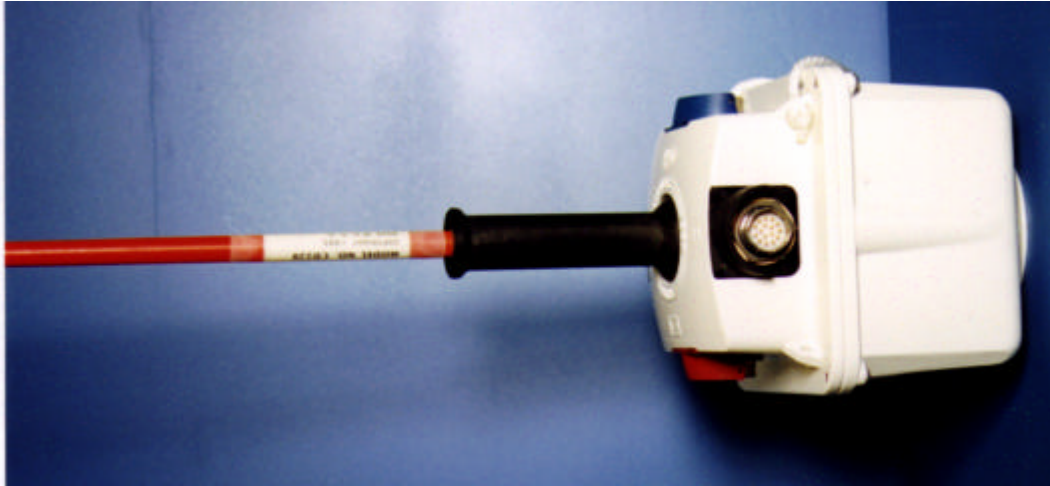


**Photographs of Remote Unit Transmitter**





**FCC 10 CU8 BOX - RU**  
**Remote Unit Transmitter**



**FCC 10 CU8 BOX - RU**  
**Remote Unit Transmitter**

## APPENDIX 7

### Drawings of Remote Unit Transmitter Boards\*

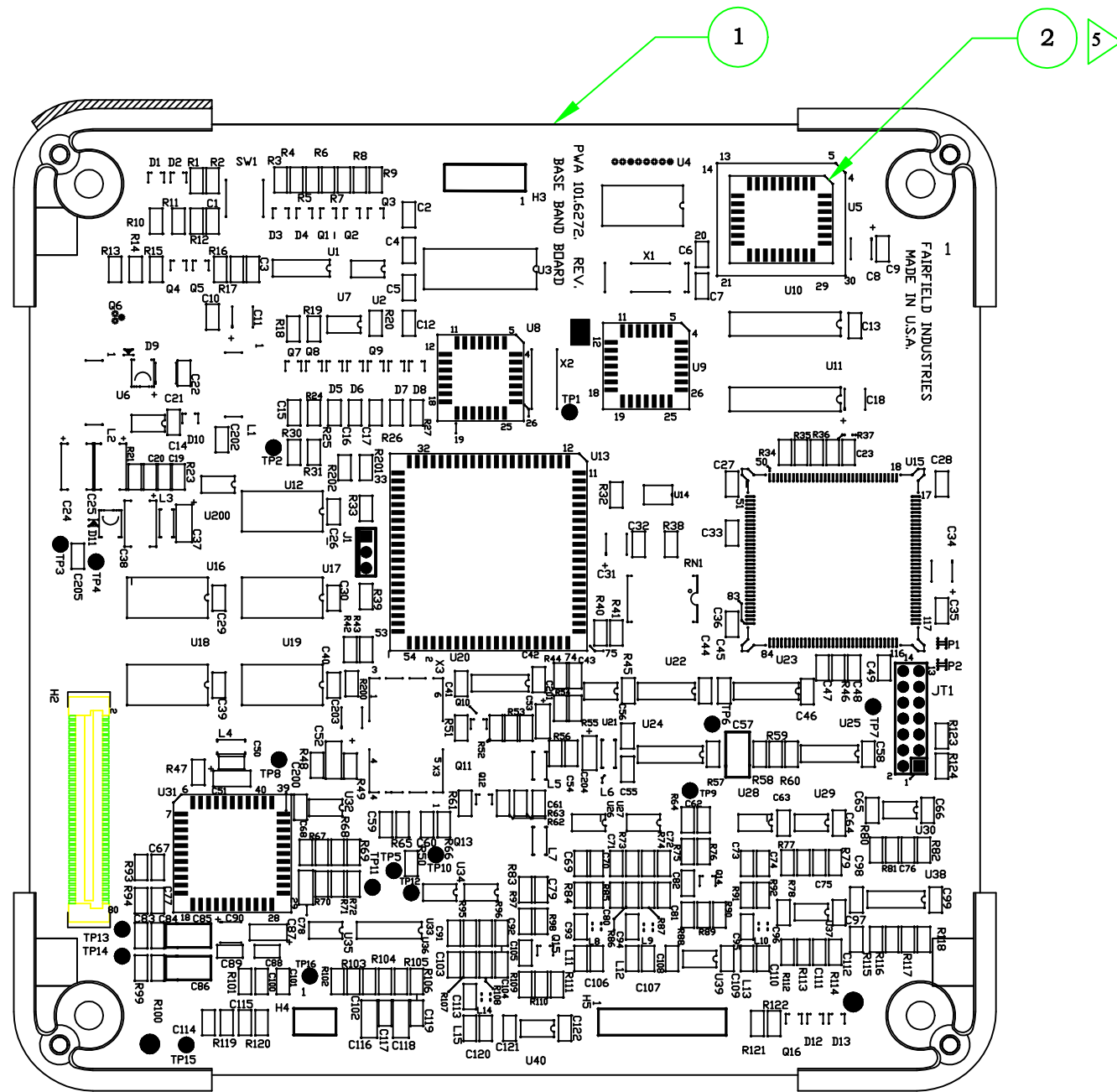
**\*Note:** *Due to the small size of the boards and their components, and the consequent difficulty of distinguishing components on a photograph, Manufacturing Drawings showing component locations are provided in lieu of photographs.*

blank

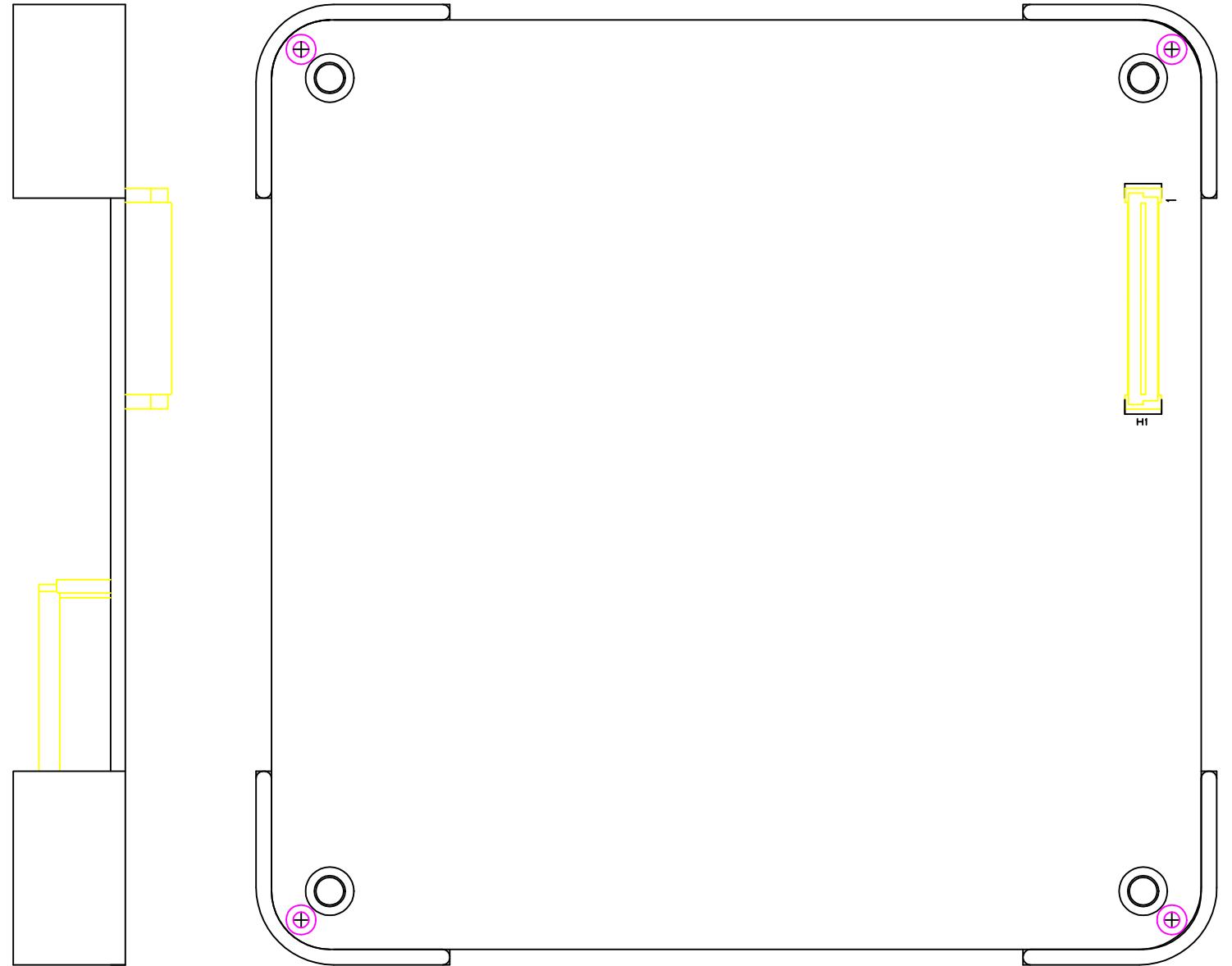
NOTES:

5 REMOVE U5 FROM SOCKET, INSTALL FLASH CHIP (ITEM 2).

ASSEMBLY  
.0002



PRIMARY SIDE

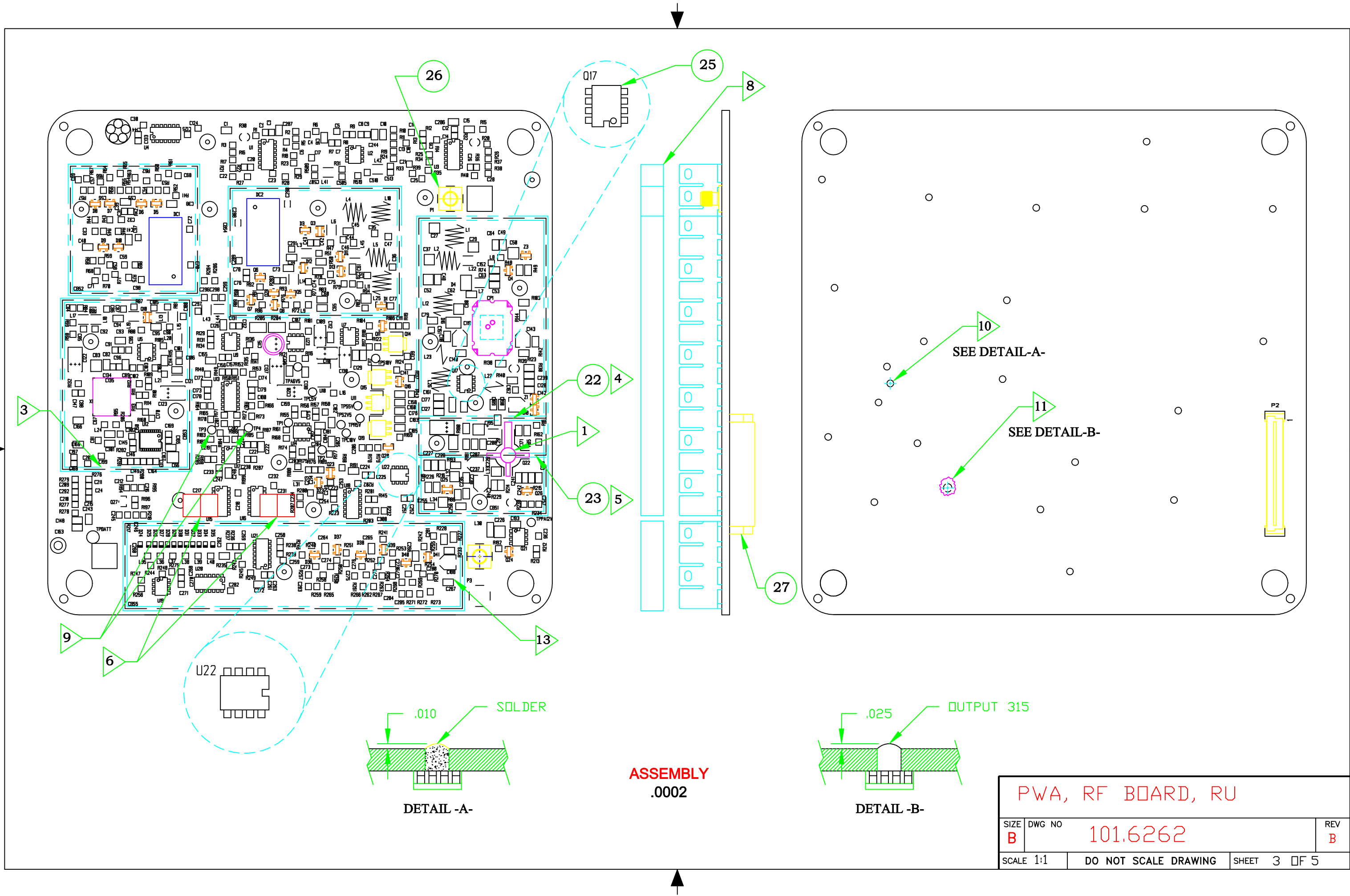


SECONDARY SIDE

Copyright 1998 Fairfield Industries Incorporated; All Rights Reserved  
This document and the information contained herein is the property of Fairfield Industries Incorporated. Any use, disclosure, copying, display, reproduction or dissemination of any part of this document and/or the information contained herein without the prior written authorization of Fairfield Industries Incorporated is prohibited. Infringers may be subject to civil and/or criminal penalties (17 U.S.C. paragraphs 504-506).

PWA, BASE BAND, RU

SIZE	DWG NO	REV
B	101.6272	D
SCALE 1:1	DO NOT SCALE DRAWING	SHEET 3 OF 3



ASSEMBLY  
.0002

PWA, RF BOARD, RU			
SIZE B	DWG NO 101.6262	REV B	
SCALE 1:1	DO NOT SCALE DRAWING	SHEET 3	OF 5