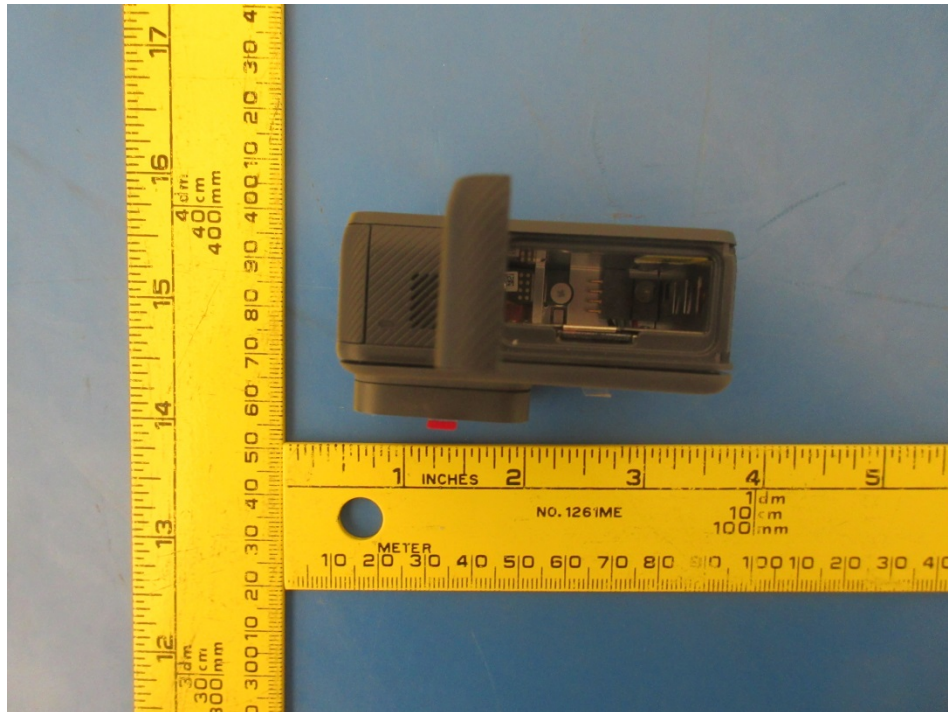


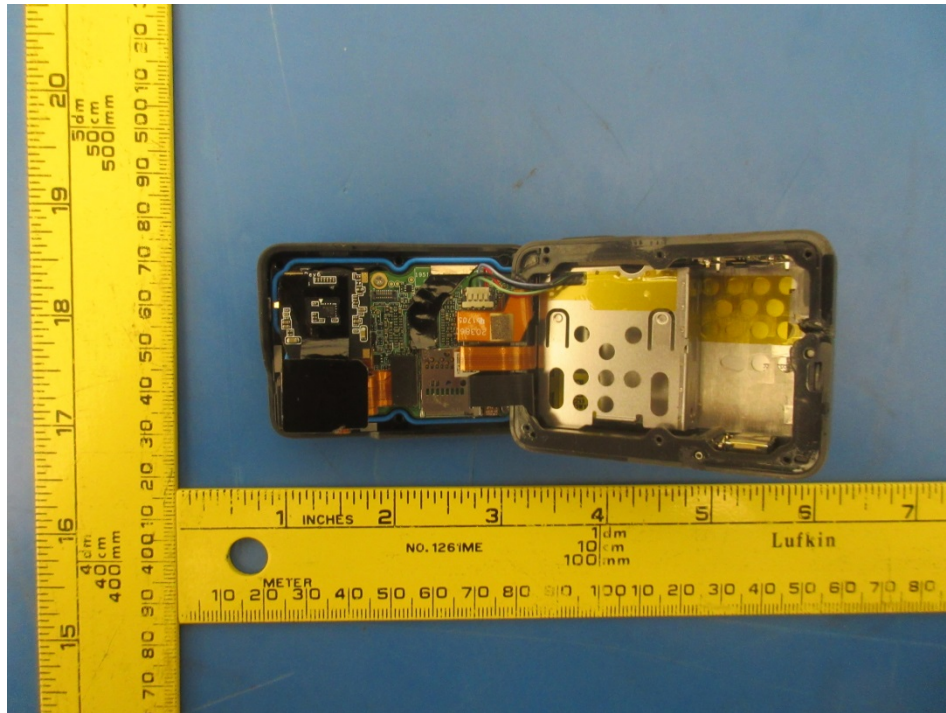
## 1.7 EUT – Battery Lid Open View



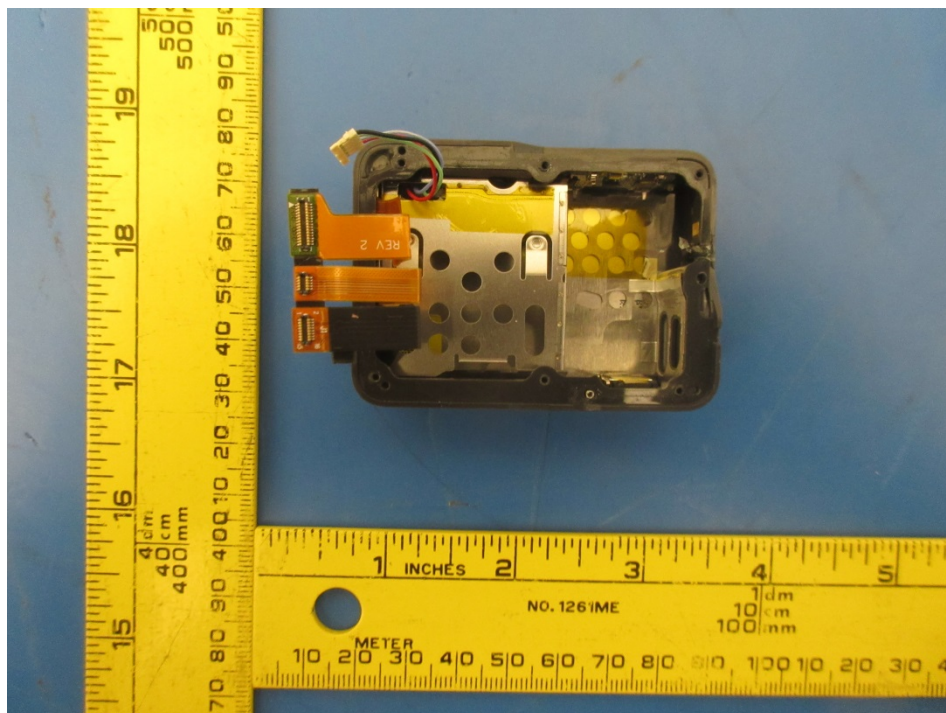
## 1.8 UT – Micro USB and USB C Port



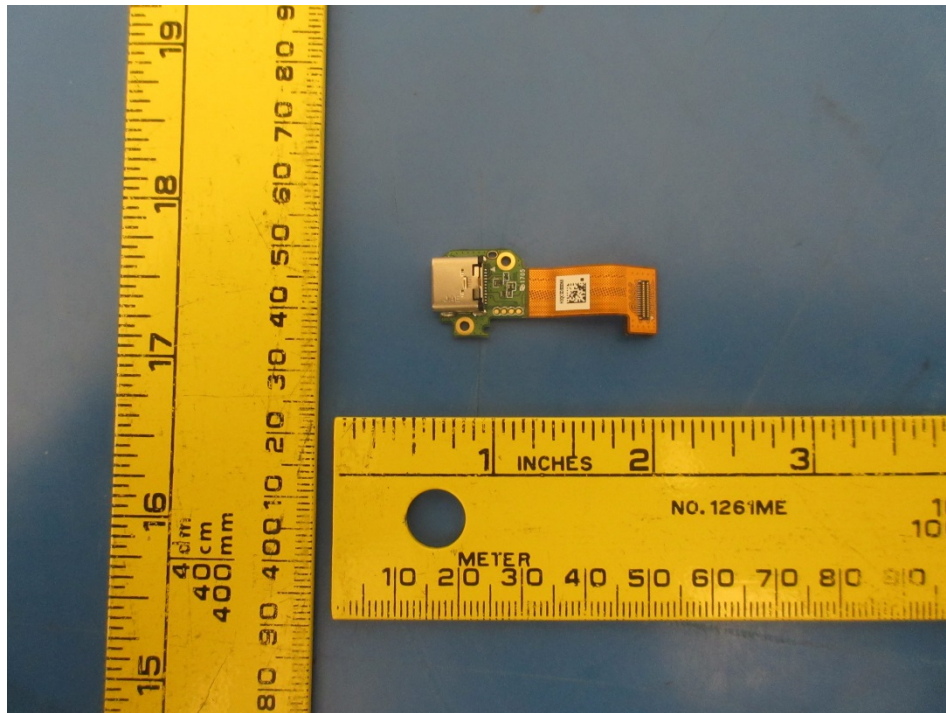
## 1.9 EUT – Without Cover



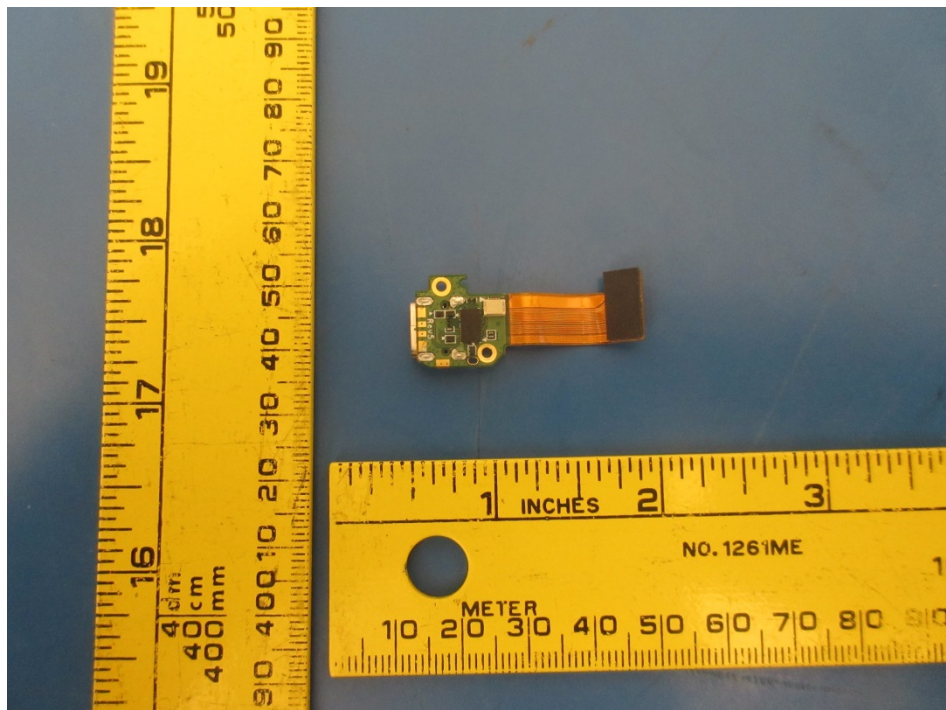
## 1.10 EUT – Battery Case



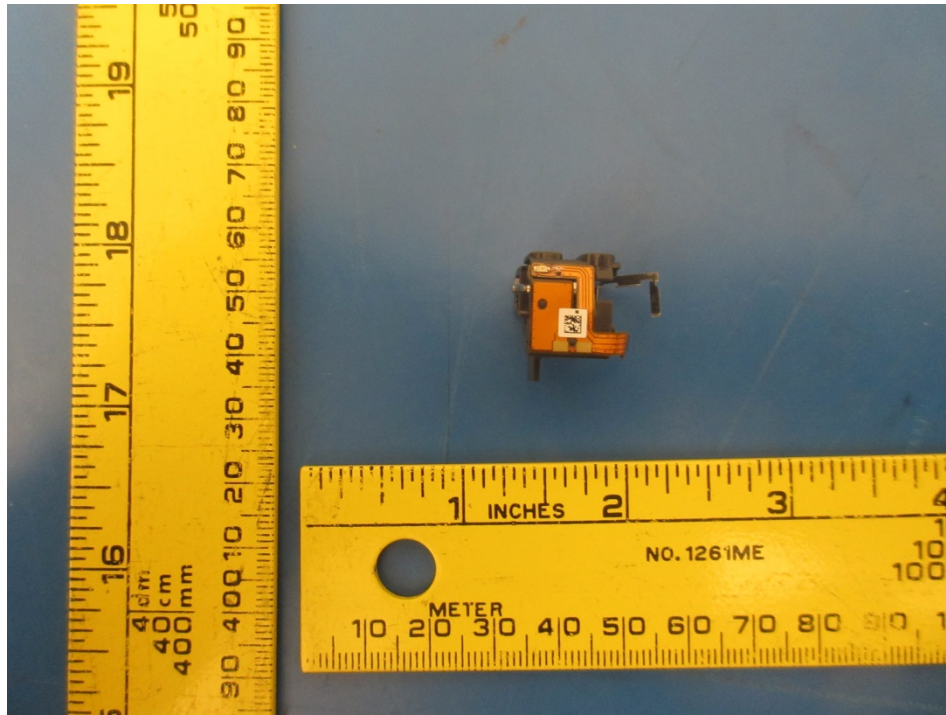
### 1.11 EUT – USB C Port Circuit Board Top View



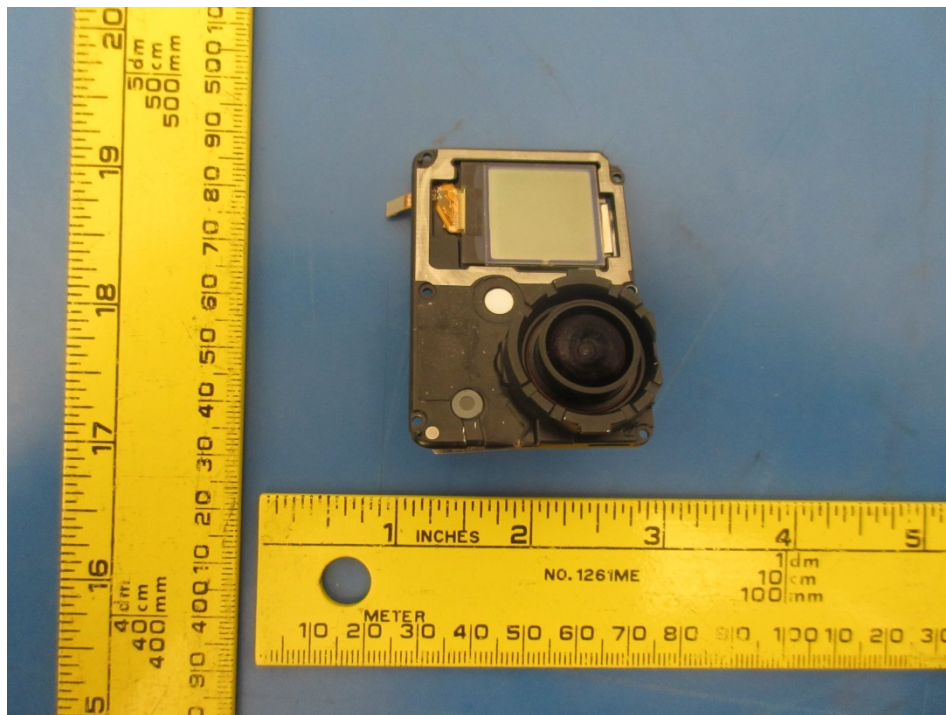
### 1.12 EUT – USB C Port Circuit Board Bottom View



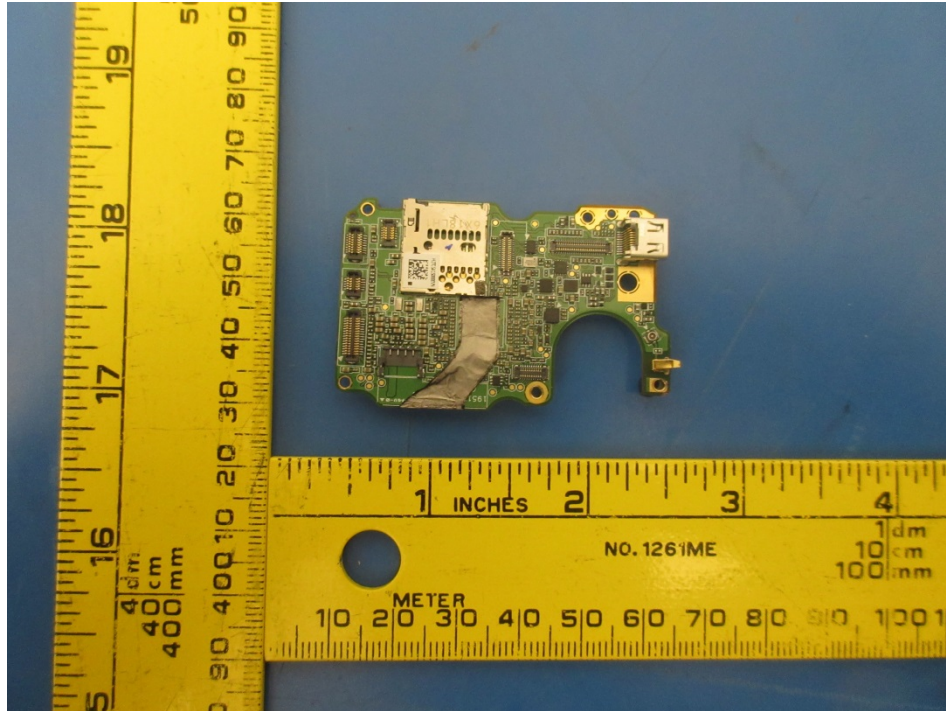
### 1.13 EUT – Micro-USB Port



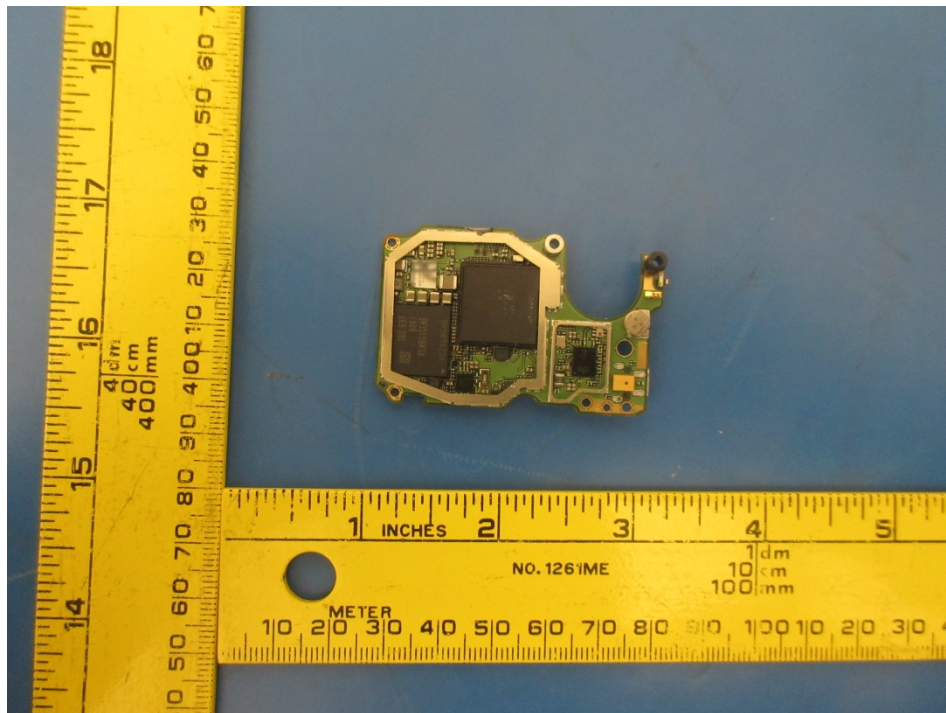
### 1.14 EUT – Without Front Cover



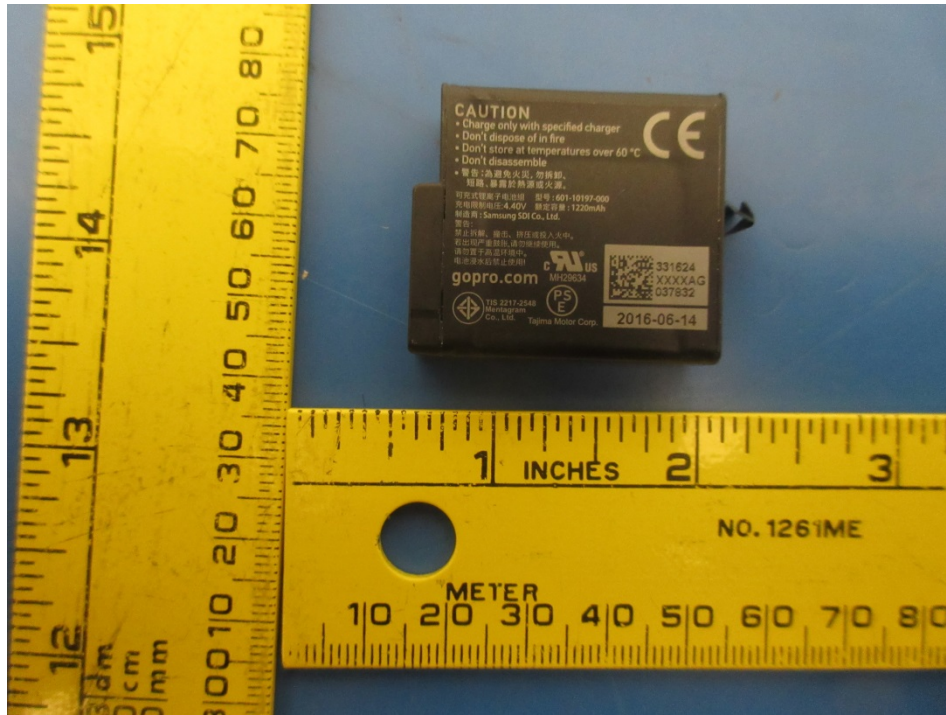
### 1.15 EUT – Main Board Top View



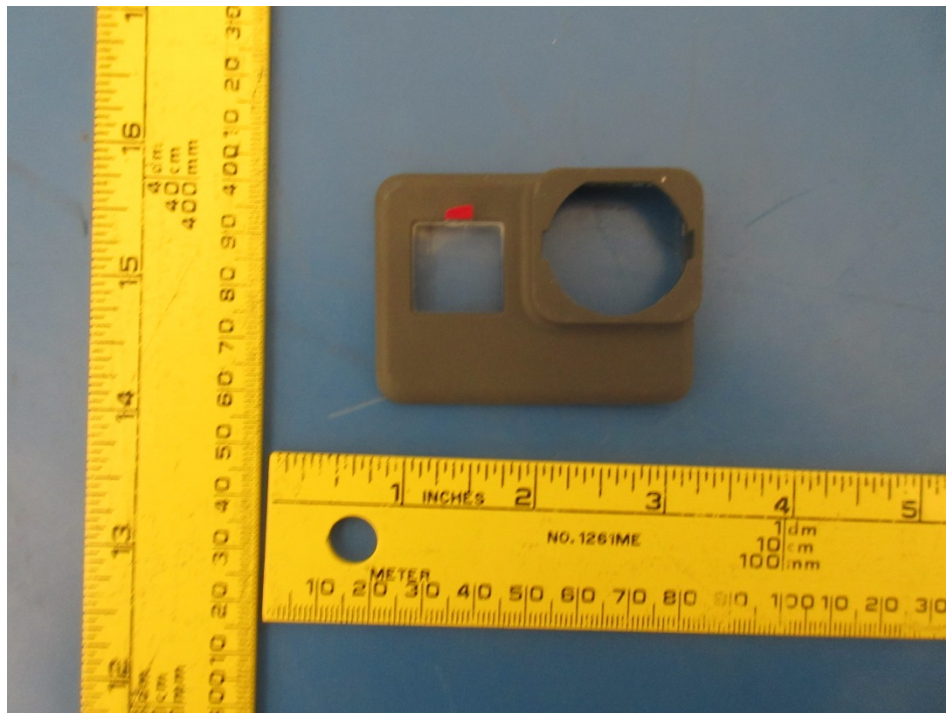
### 1.16 EUT – Main Board Bottom View



### 1.17 EUT – Battery View



### 1.18 EUT – Cover View



**1.19 EUT – Camera Lens Case Top View**

