

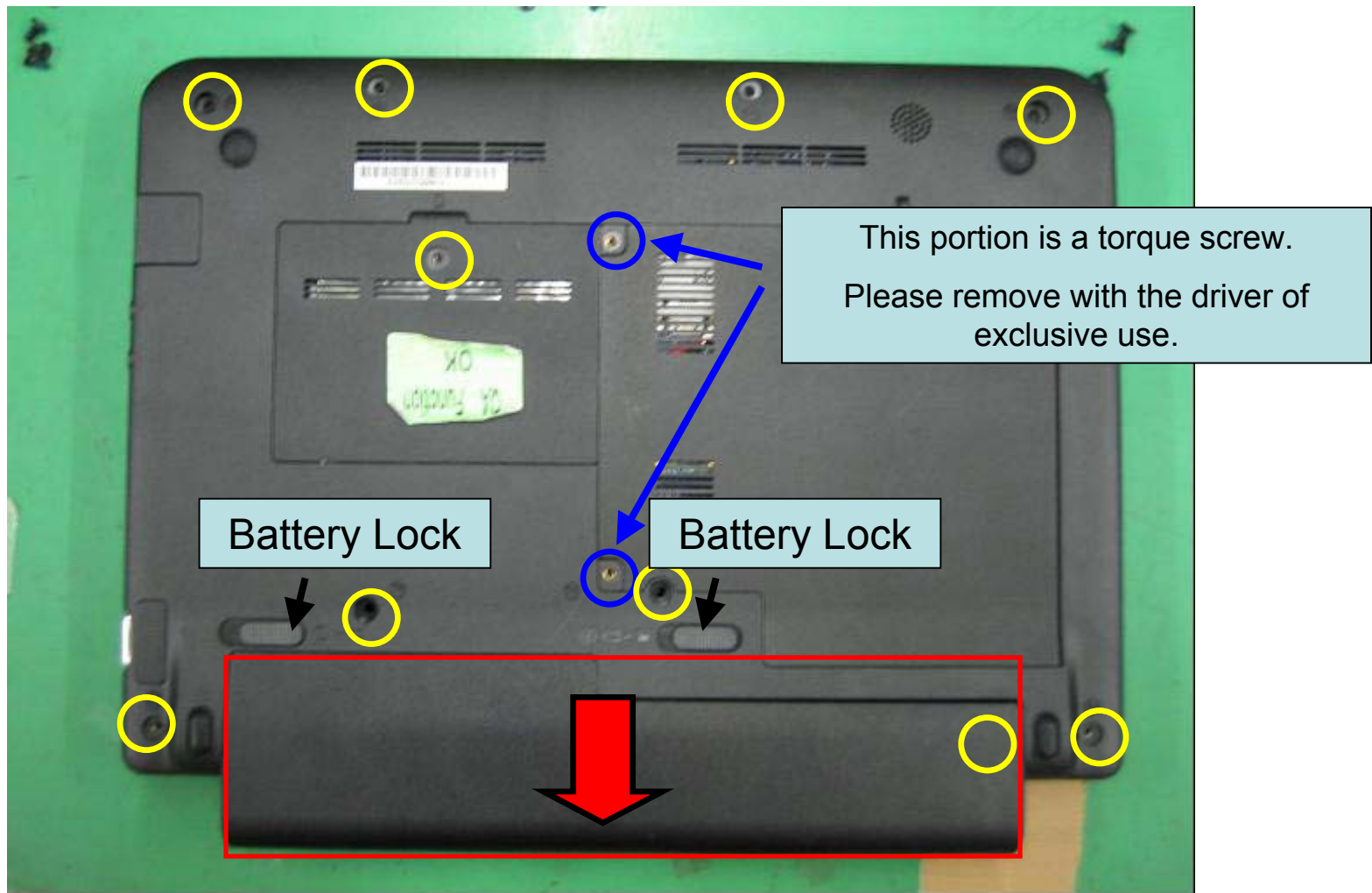
3G Module Installation PC



Use Card



How to find the location of module



Battery and a screw are removed.

How to find the location of module

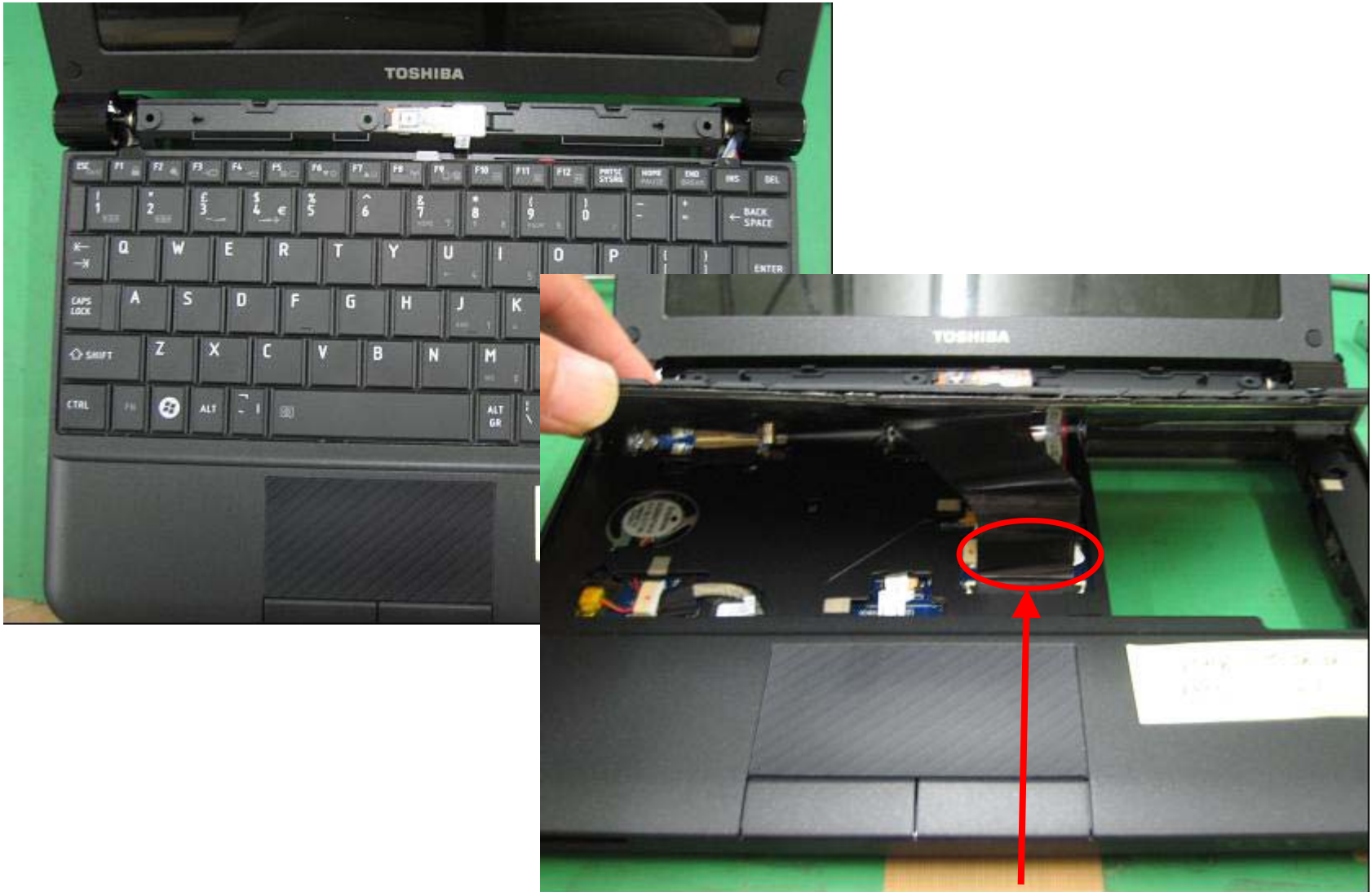


HDD and a screw are removed.

How to find the location of module

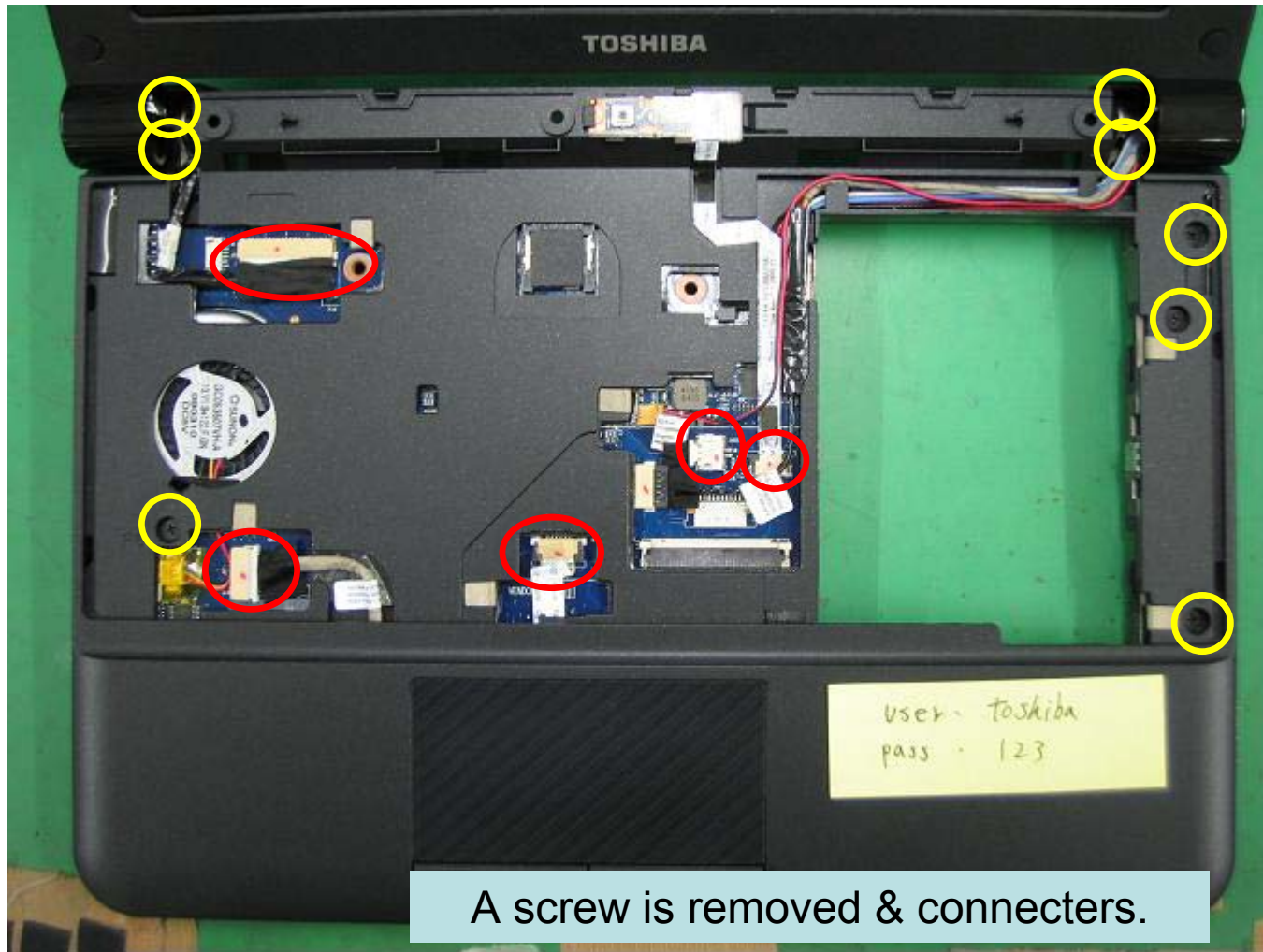


How to find the location of module

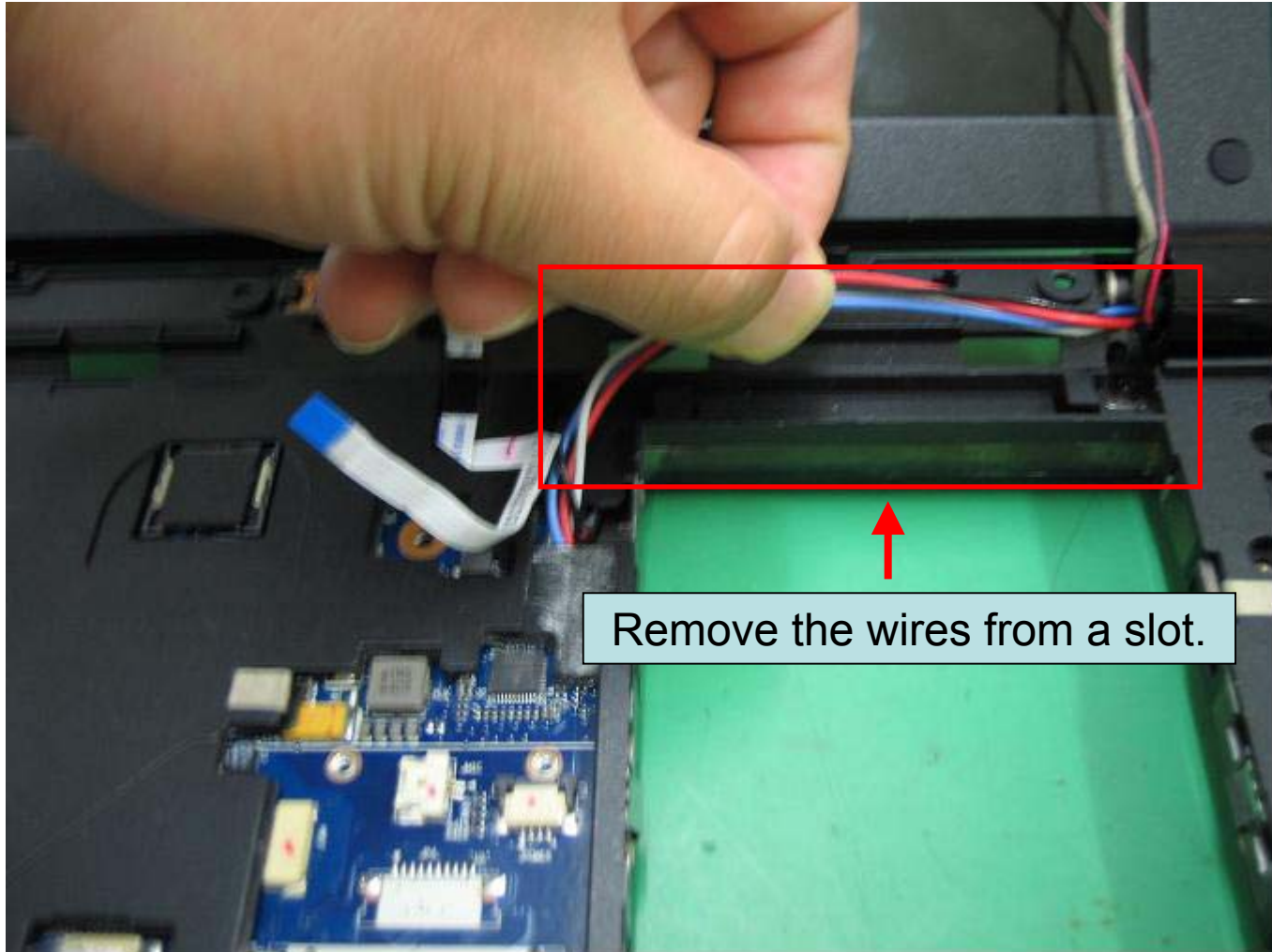


Remove the KB.

How to find the location of module

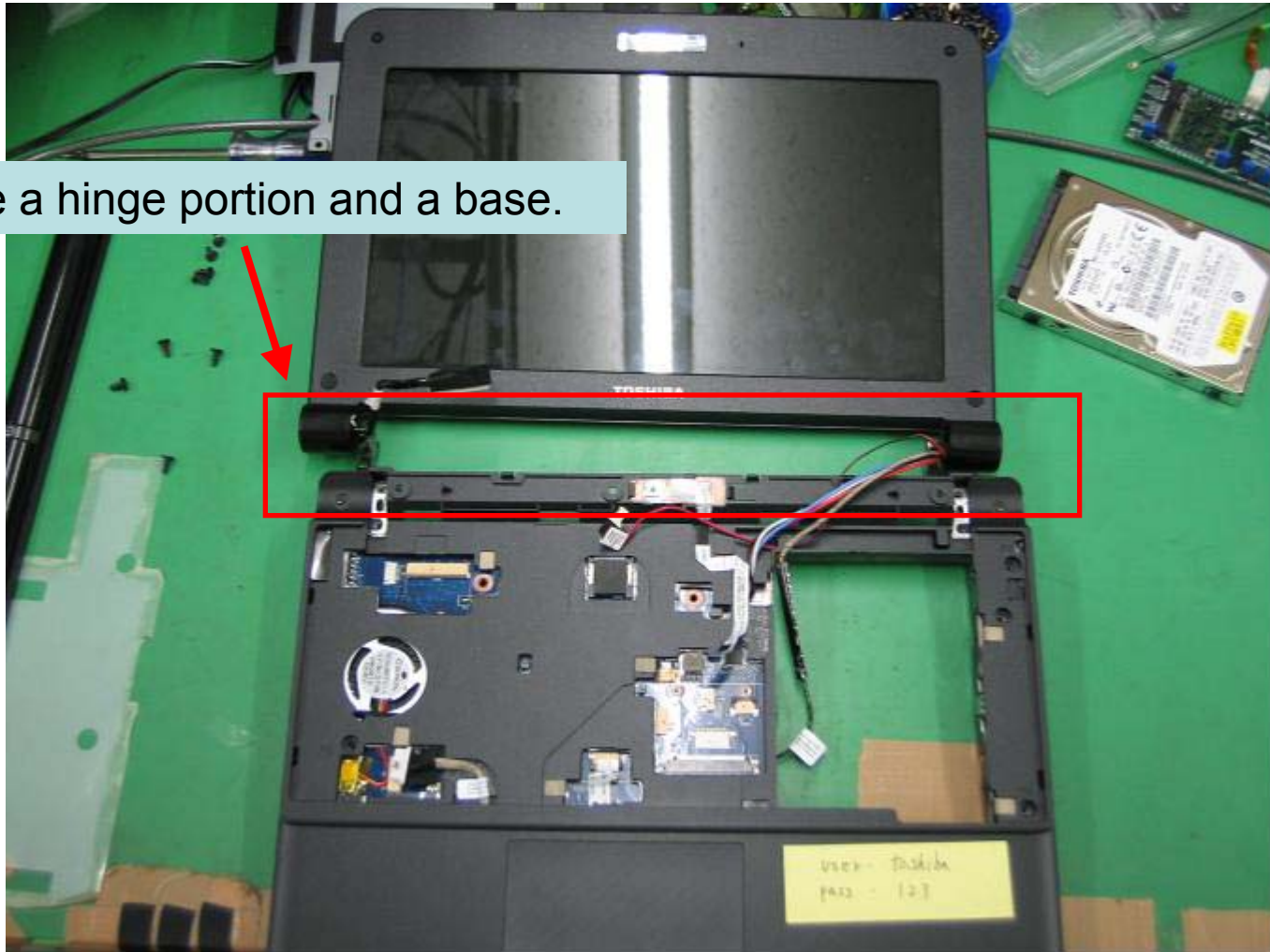


How to find the location of module

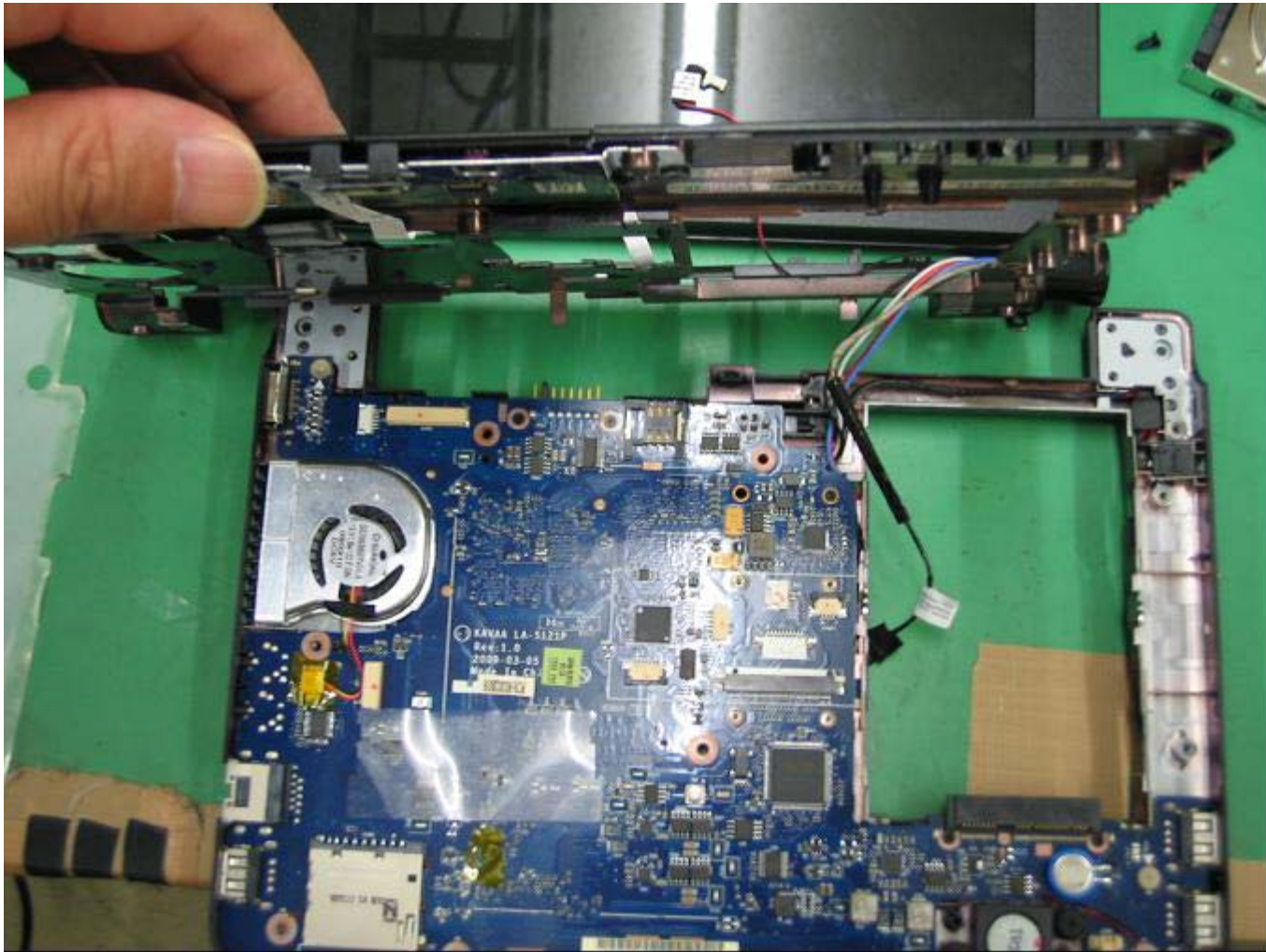


How to find the location of module

Remove a hinge portion and a base.

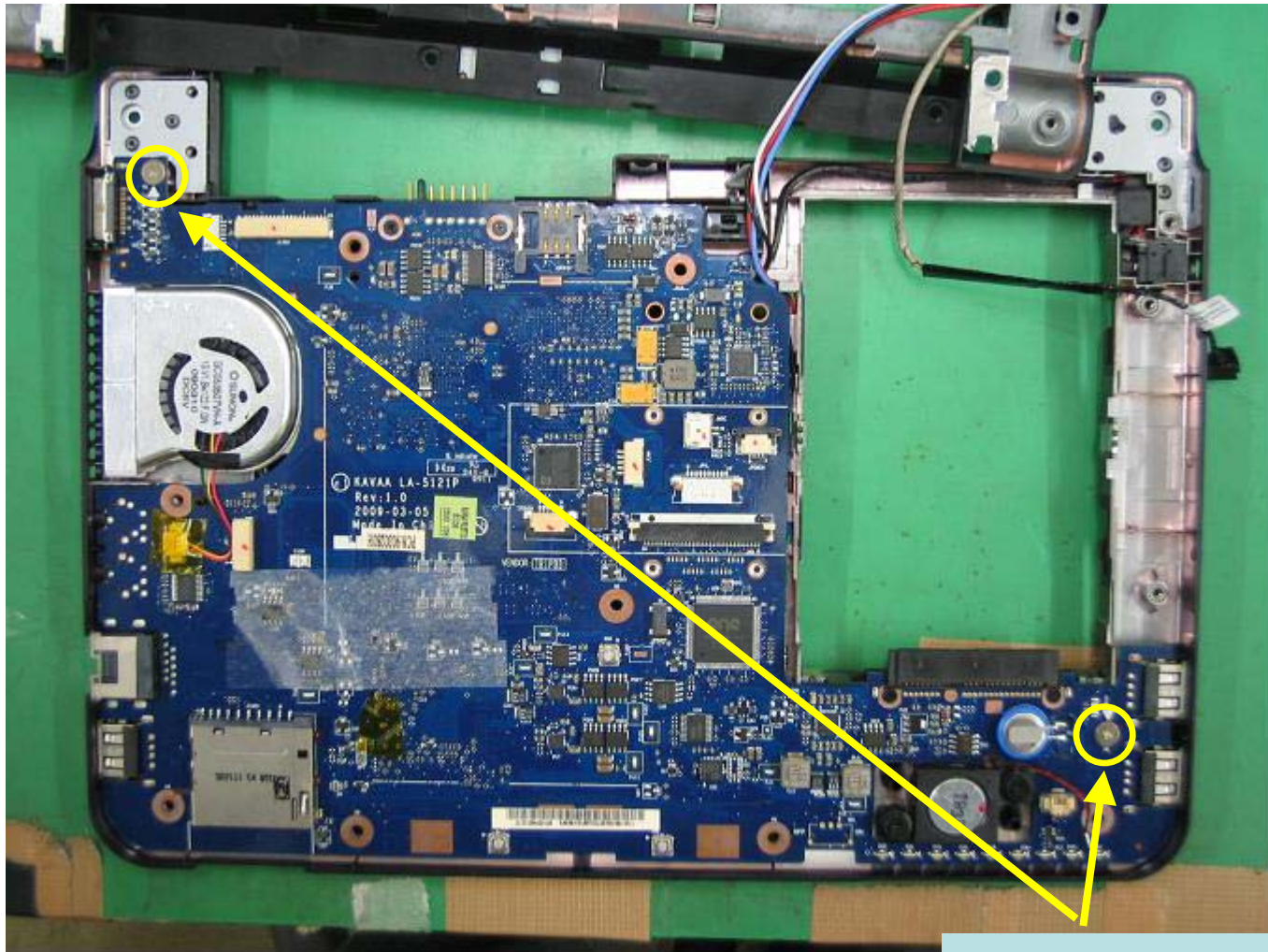


How to find the location of module



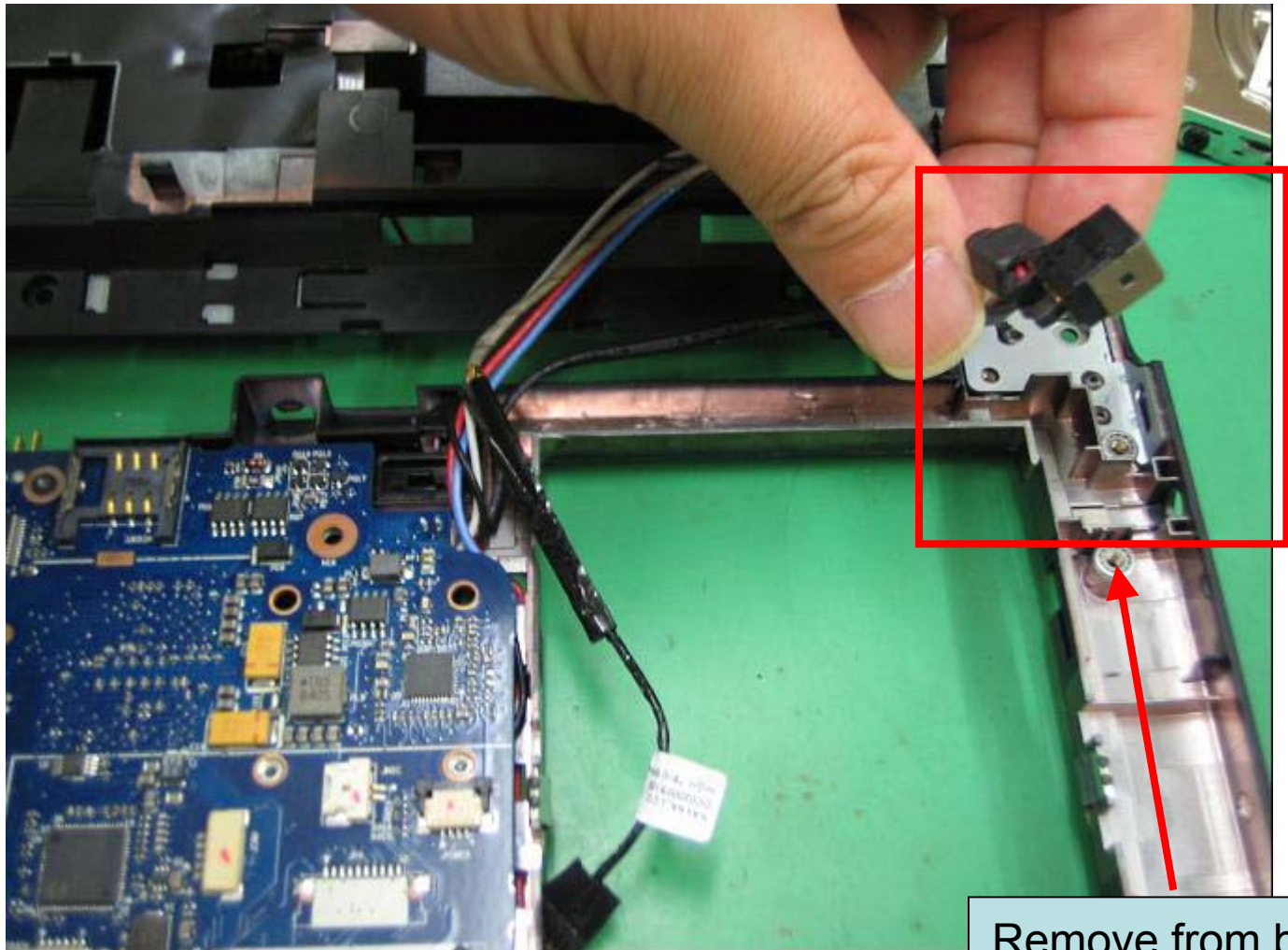
Remove a top cover and a base.

How to find the location of module



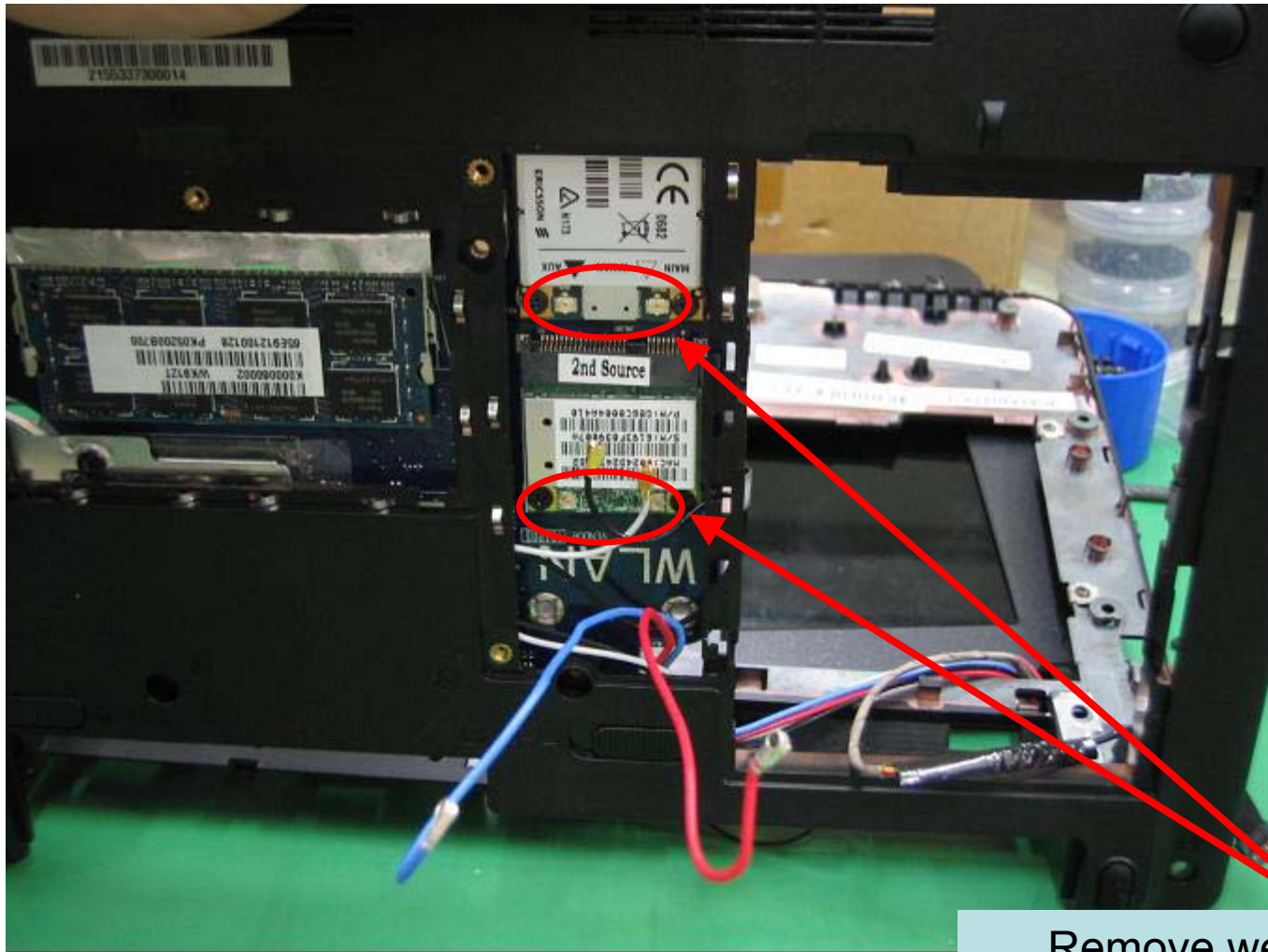
Remove screws.

How to find the location of module



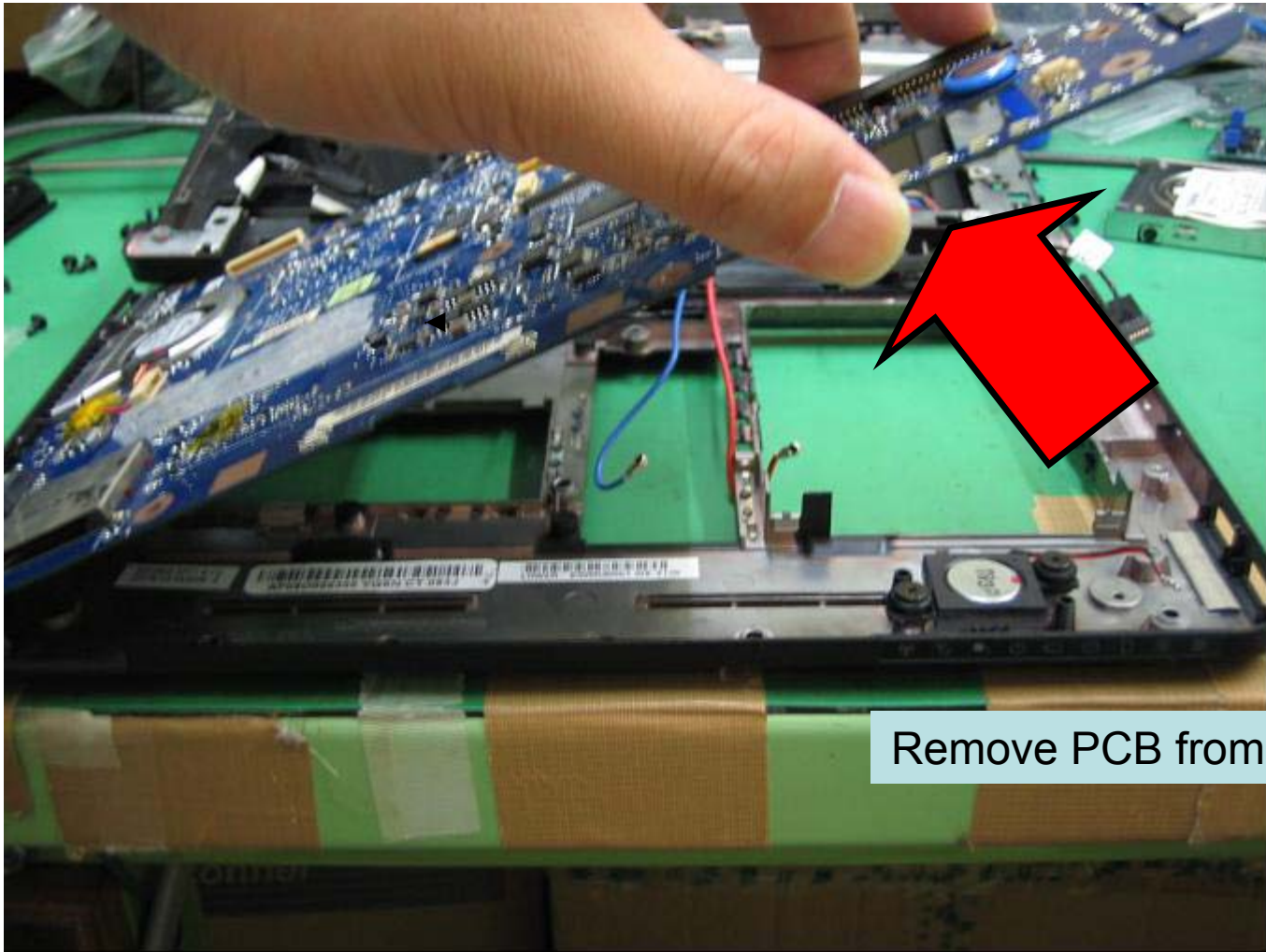
Remove from base.

How to find the location of module



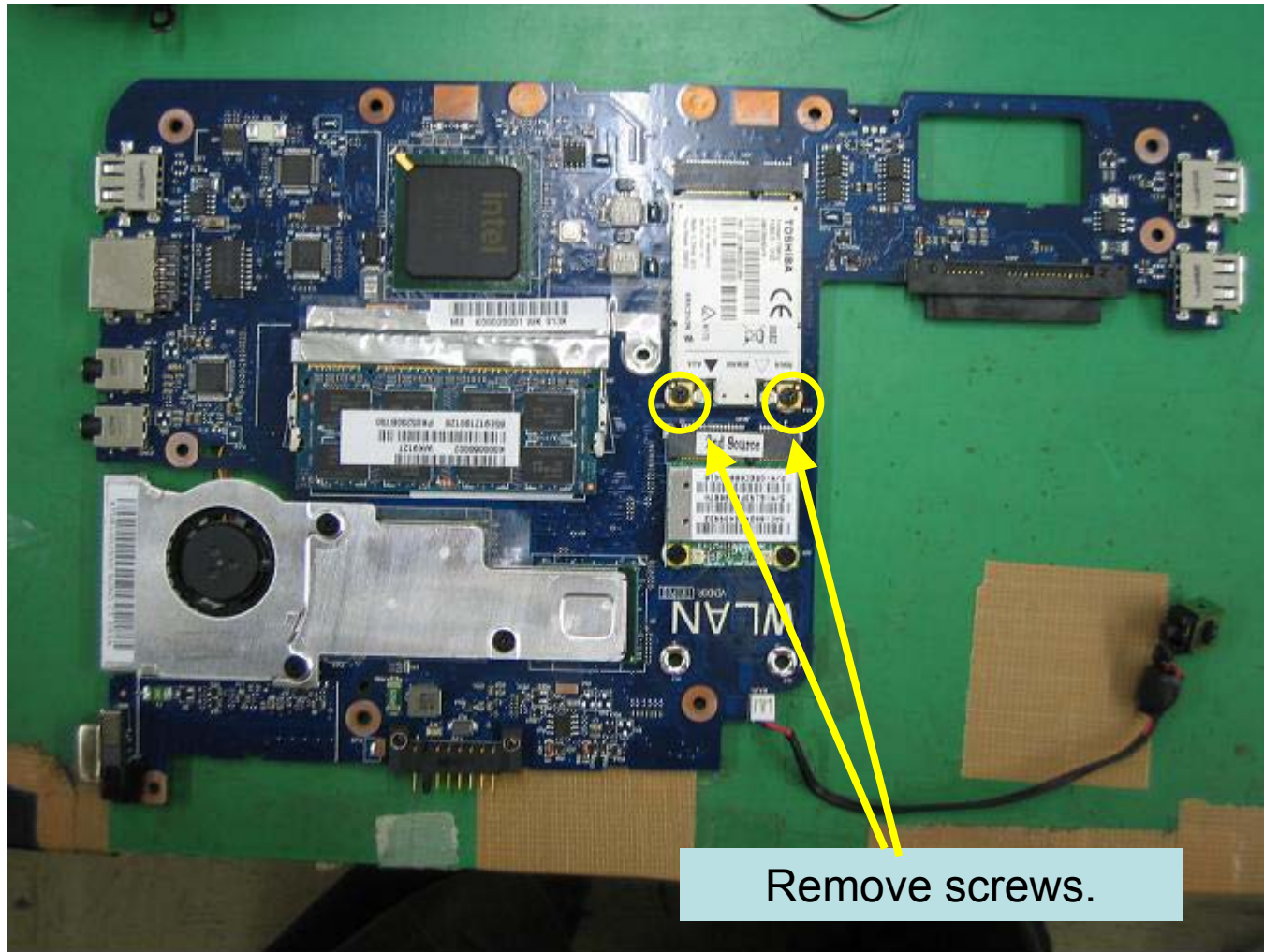
Remove weires.

How to find the location of module

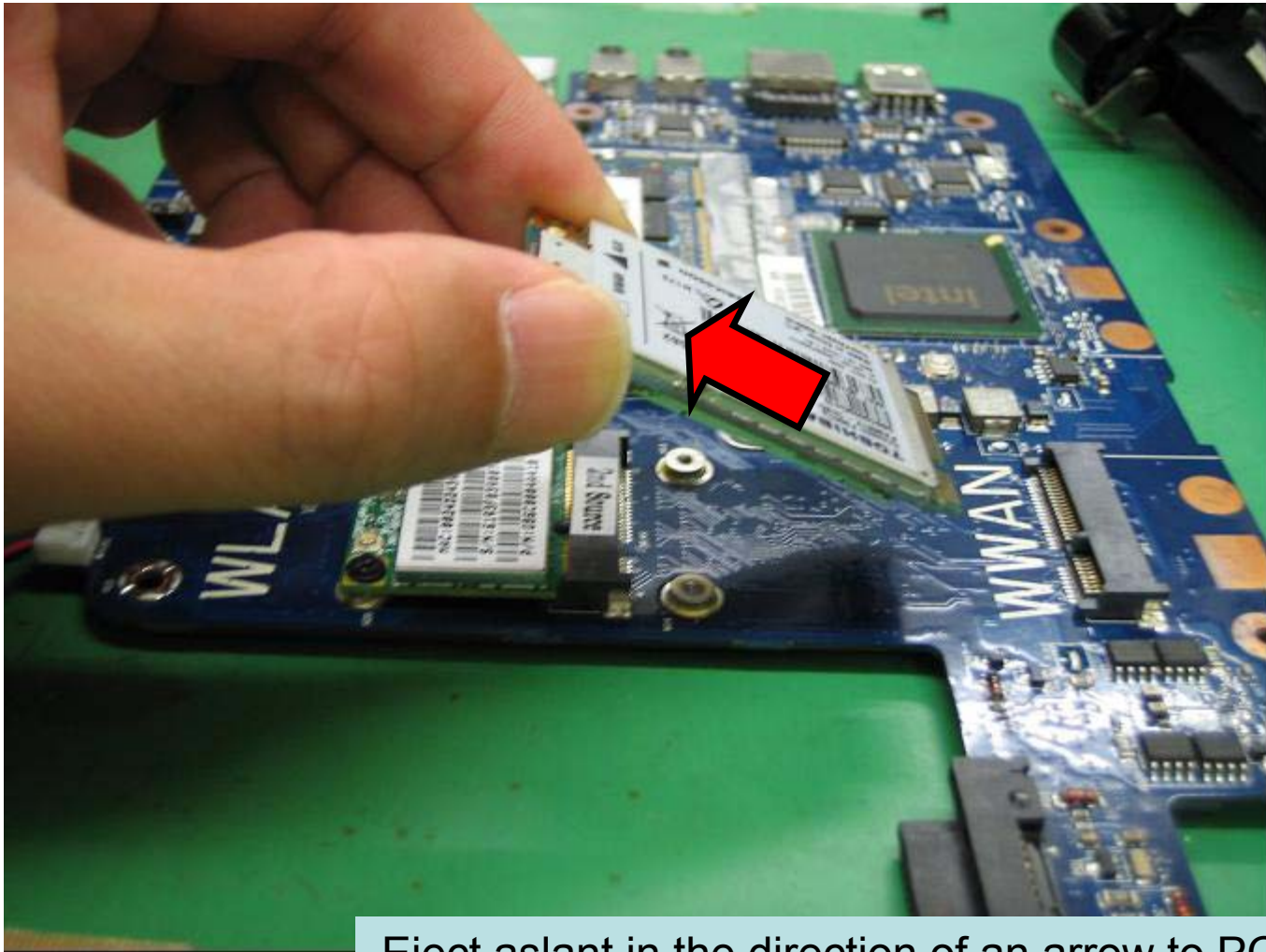


Remove PCB from base.

The exchange mounting method of the existing Module.

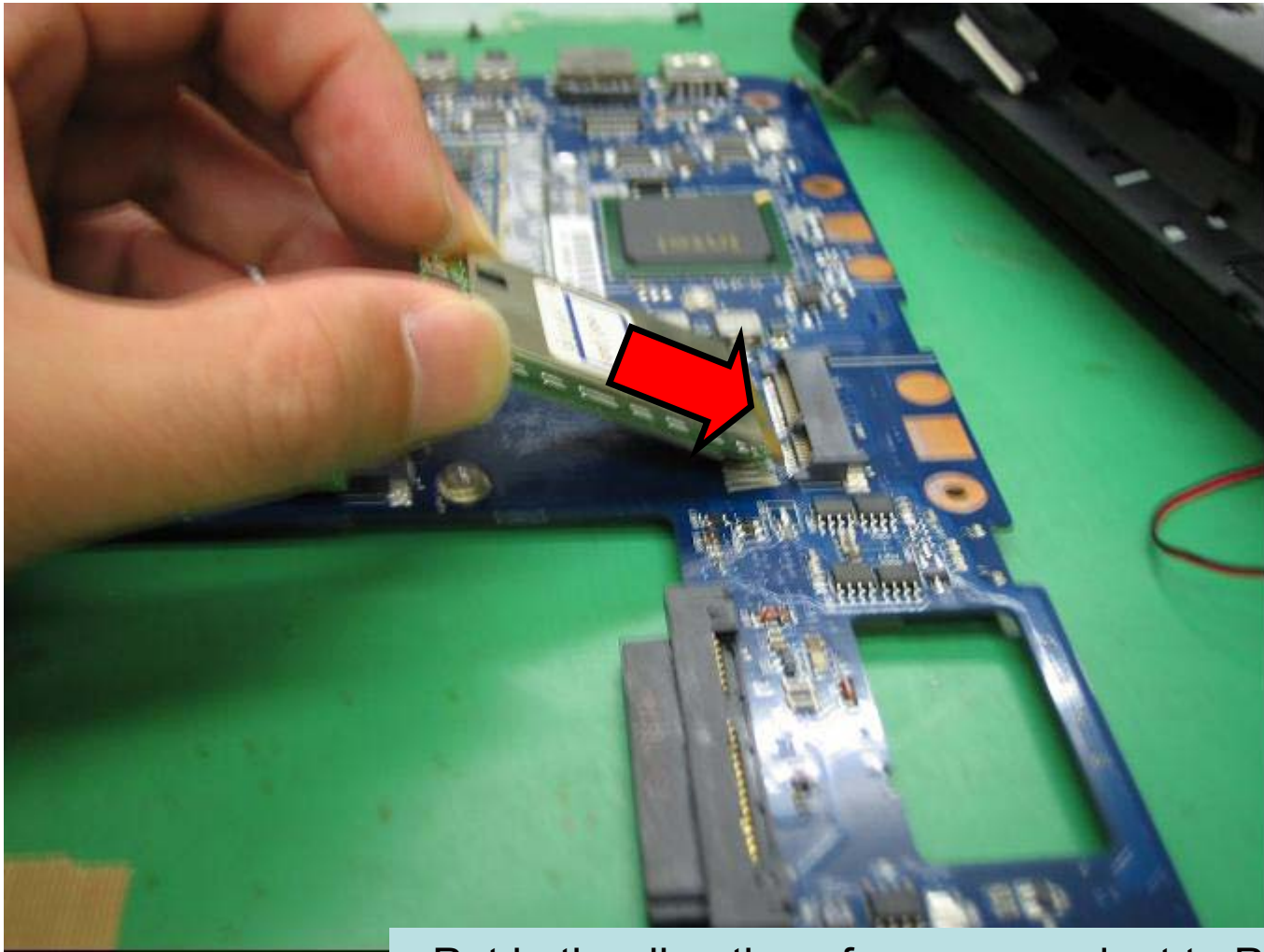


The exchange mounting method of the existing Module.



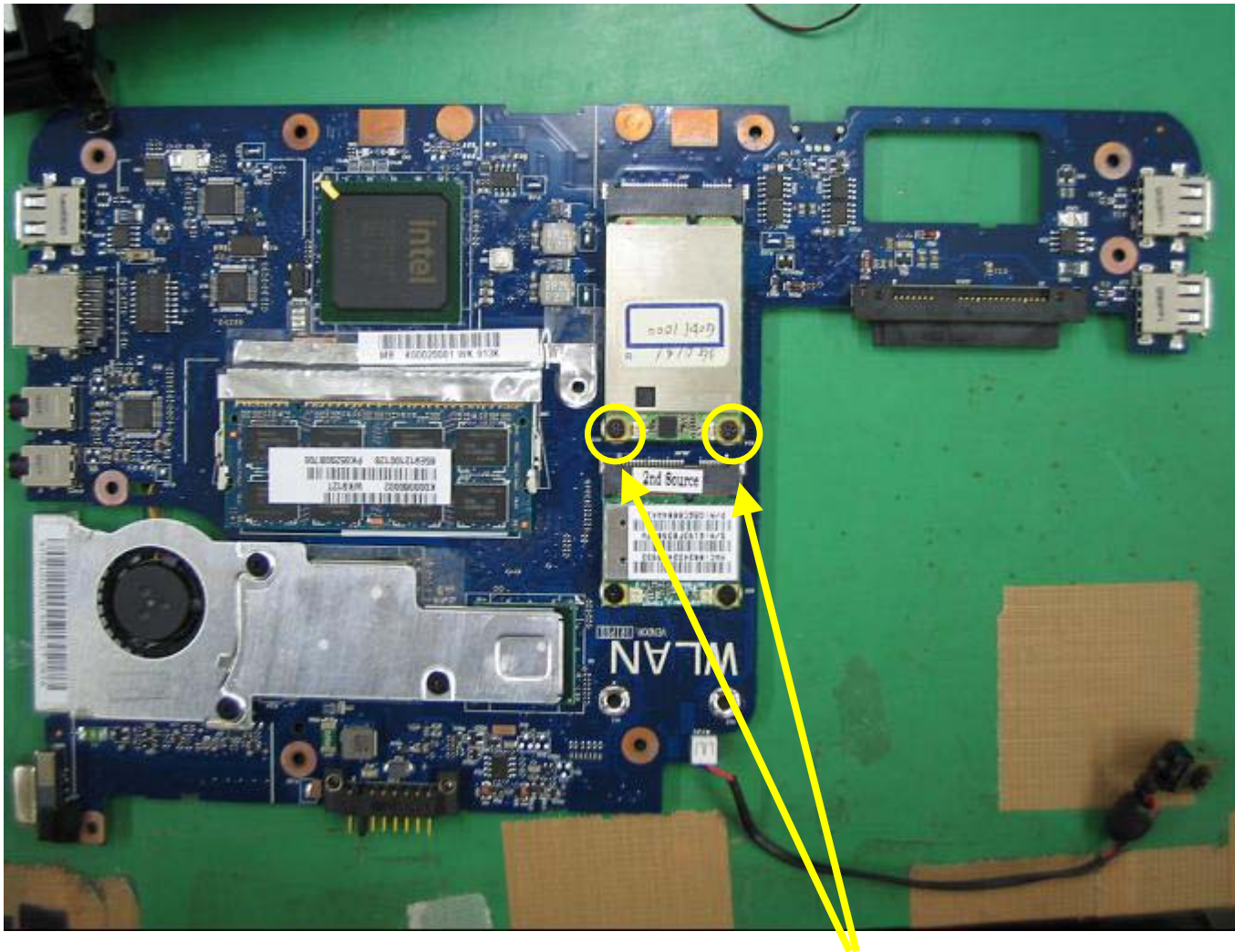
Eject aslant in the direction of an arrow to PCB side.

The exchange mounting method of the new Module.



Put in the direction of an arrow aslant to PCB side.

Screw are attached on the new module



Fix with a screws.

Antenna are attached on the new module

