



**FCC OET BULLETIN 65 SUPPLEMENT C
CLASS II PERMISSIVE CHANGE
IC RSS-102 ISSUE 4**

SAR EVALUATION REPORT

FOR

**802.11g/Draft 802.11n WLAN PCI-E Minicard
(Tested inside of Laptop PC)**

Model: PA3829U-1MPC

FCC ID: CJ6UPA3829WB

IC: 248H-DPA3829W

REPORT NUMBER: 10U13573-1

ISSUE DATE: DECEMBER 14, 2010

Prepared for

**TOSHIBA AMERICA INFORMATION SYSTEMS, INC.
9740 IRVINE BLVD.
IRVINE, CA 92618
USA**

Prepared by

**COMPLIANCE CERTIFICATION SERVICES (UL CCS)
47173 BENICIA STREET
FREMONT, CA 94538, U.S.A.
TEL: (510) 771-1000
FAX: (510) 661-0888**



NVLAP LAB CODE 200065-0

Revision History

<u>Rev.</u>	<u>Issue Date</u>	<u>Revisions</u>	<u>Revised By</u>
--	December 14, 2010	Initial Issue based on report no 10U13275-1	--

TABLE OF CONTENTS

1. ATTESTATION OF TEST RESULTS	4
2. TEST METHODOLOGY	5
3. FACILITIES AND ACCREDITATION	5
4. CALIBRATION AND UNCERTAINTY	6
4.1. MEASURING INSTRUMENT CALIBRATION	6
4.2. MEASUREMENT UNCERTAINTY	7
5. EQUIPMENT UNDER TEST	8
6. SYSTEM SPECIFICATIONS	9
7. COMPOSITION OF INGREDIENTS FOR TISSUE SIMULATING LIQUIDS	10
8. TISSUE DIELECTRIC PARAMETERS CHECK	11
8.1. LIQUID CHECK RESULTS FOR 2450 MHZ	12
9. SYSTEM VERIFICATION	13
9.1. SYSTEM CHECK RESULTS FOR D2450V2	13
10. OUTPUT POWER VERIFICATION	16
11. SUMMARY OF TEST RESULTS	17
12. SAR TEST PLOTS	18
13. ATTACHMENTS	20
14. ANTENNA TO USER SEPARATION DISTANCES	21
15. PHOTOS	22
15.1. TEST SETUP PHOTO	22
15.2. HOST DEVICE PHOTO	23

1. ATTESTATION OF TEST RESULTS

COMPANY NAME:	TOSHIBA AMERICA INFORMATION SYSTEMS, INC. 9740 IRVINE BLVD. IRVINE, CA 92618
EUT DESCRIPTION:	802.11g/Draft 802.11n WLAN PCI-E Minicard (Tested inside of laptop PC)
MODEL NUMBER:	PA3829U-1MPC
DEVICE CATEGORY:	Portable
EXPOSURE CATEGORY:	General Population/Uncontrolled Exposure
DATE TESTED:	June 21, 2010

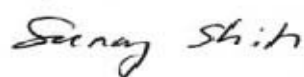
FCC / IC rule parts	Freq. range (MHz)	The Highest SAR (W/kg)		Limit (W/kg)
		1g	10g	
15.247 / RSS-102	2412 - 2472	0.304	0.153	1g = 1.6 10g = 2.0

Applicable Standards	Test Results
<ul style="list-style-type: none"> - FCC OET Bulletin 65 Supplement C 01-01 - IC RSS 102 Issue 4 	Pass
<ul style="list-style-type: none"> - Schedule 2 of Radiocommunications (Electromagnetic Radiation - Human Exposure) Standard 2003 incl Amendment No 1, 2007 and - NZS 2772.1:1999 Radiofrequency fields - Maximum exposure levels - 3 kHz to 300 GHz incl Amendment No. 1, 1999. 	Pass

Compliance Certification Services (UL CCS) tested the above equipment in accordance with the requirements set forth in the above standards. All indications of Pass/Fail in this report are opinions expressed by UL CCS based on interpretations and/or observations of test results. Measurement Uncertainties were not taken into account and are published for informational purposes only. The test results show that the equipment tested is capable of demonstrating compliance with the requirements as documented in this report.

Note: The results documented in this report apply only to the tested sample, under the conditions and modes of operation as described herein. This document may not be altered or revised in any way unless done so by UL CCS and all revisions are duly noted in the revisions section. Any alteration of this document not carried out by UL CCS will constitute fraud and shall nullify the document. This report must not be used by the client to claim product certification, approval, or endorsement by NVLAP, NIST, any agency of the Federal Government, or any agency of any government (NIST Handbook 150, Annex A). This report is written to support regulatory compliance of the applicable standards stated above.

Approved & Released For CCS By:



Tested By:



SUNNY SHIH
ENGINEERING SUPERVISOR
UL CCS

DEVIN CHANG
EMC ENGINEER
UL CCS

2. TEST METHODOLOGY

The tests documented in this report were performed in accordance with FCC OET Bulletin 65 Supplement C, Specific FCC Procedure KDB 248227 SAR Measurement Procedure for 802.11abg Transmitters, KDB 447498 D01 Mobile Portable RF Exposure v04, supplemental to KDB 616217 D03 and IC RSS 102 Issue 4.

And Schedule 2 of Radiocommunications (Electromagnetic Radiation - Human Exposure) Standard 2003 incl Amendment No 1, 2007 and NZS 2772.1:1999 Radiofrequency fields - Maximum exposure levels - 3 kHz to 300 GHz incl Amendment No. 1, 1999.

3. FACILITIES AND ACCREDITATION

The test sites and measurement facilities used to collect data are located at 47173 Benicia Street, Fremont, California, USA.

UL CCS is accredited by NVLAP, Laboratory Code 200065-0. The full scope of accreditation can be viewed at <http://www.ccsemc.com>.

4. CALIBRATION AND UNCERTAINTY

4.1. MEASURING INSTRUMENT CALIBRATION

The measuring equipment utilized to perform the tests documented in this report has been calibrated in accordance with the manufacturer's recommendations, and is traceable to recognized national standards.

Name of Equipment	Manufacturer	Type/Model	Serial No.	Cal. Due date		
				MM	DD	Year
Robot - Six Axes	Stäubli	RX90BL	N/A			N/A
Robot Remote Control	Stäubli	CS7MB	3403-91535			N/A
DASY4 Measurement Server	SPEAG	SEUMS001BA	1041			N/A
Probe Alignment Unit	SPEAG	LB (V2)	261			N/A
SAM Phantom (SAM1)	SPEAG	QD000P40CA	1185			N/A
SAM Phantom (SAM2)	SPEAG	QD000P40CA	1050			N/A
Oval Flat Phantom (ELI 4.0)	SPEAG	QD OVA001 B	1003			N/A
Electronic Probe kit	HP	85070C	N/A			N/A
S-Parameter Network Analyzer	Agilent	8753ES-6	MY40001647	11	22	2010
Signal Generator	Agilent	8753ES-6	MY40001647	11	22	2010
E-Field Probe	SPEAG	EX3DV3	3531	2	23	2011
Data Acquisition Electronics	SPEAG	DAE3 V1	500	9	15	2010
System Validation Dipole	SPEAG	D2450V2	706	4	18	2013
ESG Vector Signal Generator	Agilent	E4438C	US44271090	9	17	2010
Amplifier	Mini-Circuits	ZVE-8G	90606			N/A
Amplifier	Mini-Circuits	ZHL-42W	D072701-5			N/A
Simulating Liquid	SPAEG	M2450	N/A	Within 24 hrs of first test		

Note: Per KDB 450824 D02 requirements for dipole calibration, CCS has adopted three years calibration intervals. On annual basis, each measurement dipole has been evaluated and is in compliance with the following criteria:

1. There is no physical damage on the dipole
2. System validation with specific dipole is within 10% of calibrated value.
3. Return-loss is within 20% of calibrated measurement (test data on file in CCS)
4. Impedance is within 5Ω of calibrated measurement (test data on file in CCS)

4.2. MEASUREMENT UNCERTAINTY

Measurement uncertainty for 300 MHz to 3 GHz averaged over 1 gram

Component	error, %	Probe Distribution	Divisor	Sensitivity	U (Xi), %
Measurement System					
Probe Calibration (k=1) @ Body 2450 MHz	5.50	Normal	1	1	5.50
Axial Isotropy	1.15	Rectangular	1.732	0.7071	0.47
Hemispherical Isotropy	2.30	Rectangular	1.732	0.7071	0.94
Boundary Effect	0.90	Rectangular	1.732	1	0.52
Probe Linearity	3.45	Rectangular	1.732	1	1.99
System Detection Limits	1.00	Rectangular	1.732	1	0.58
Readout Electronics	0.30	Normal	1	1	0.30
Response Time	0.80	Rectangular	1.732	1	0.46
Integration Time	2.60	Rectangular	1.732	1	1.50
RF Ambient Conditions - Noise	3.00	Rectangular	1.732	1	1.73
RF Ambient Conditions - Reflections	3.00	Rectangular	1.732	1	1.73
Probe Positioner Mechanical Tolerance	0.40	Rectangular	1.732	1	0.23
Probe Positioning with respect to Phantom	2.90	Rectangular	1.732	1	1.67
Extrapolation, Interpolation and Integration	1.00	Rectangular	1.732	1	0.58
Test Sample Related					
Test Sample Positioning	2.90	Normal	1	1	2.90
Device Holder Uncertainty	3.60	Normal	1	1	3.60
Output Power Variation - SAR Drift	5.00	Rectangular	1.732	1	2.89
Phantom and Tissue Parameters					
Phantom Uncertainty (shape and thickness)	4.00	Rectangular	1.732	1	2.31
Liquid Conductivity - deviation from target	5.00	Rectangular	1.732	0.64	1.85
Liquid Conductivity - measurement	2.91	Normal	1	0.64	1.86
Liquid Permittivity - deviation from target	5.00	Rectangular	1.732	0.6	1.73
Liquid Permittivity - measurement	-1.82	Normal	1	0.6	-1.09
Combined Standard Uncertainty Uc(y) =					9.68
Expanded Uncertainty U, Coverage Factor = 2, > 95 % Confidence =				19.37	%
Expanded Uncertainty U, Coverage Factor = 2, > 95 % Confidence =				1.54	dB

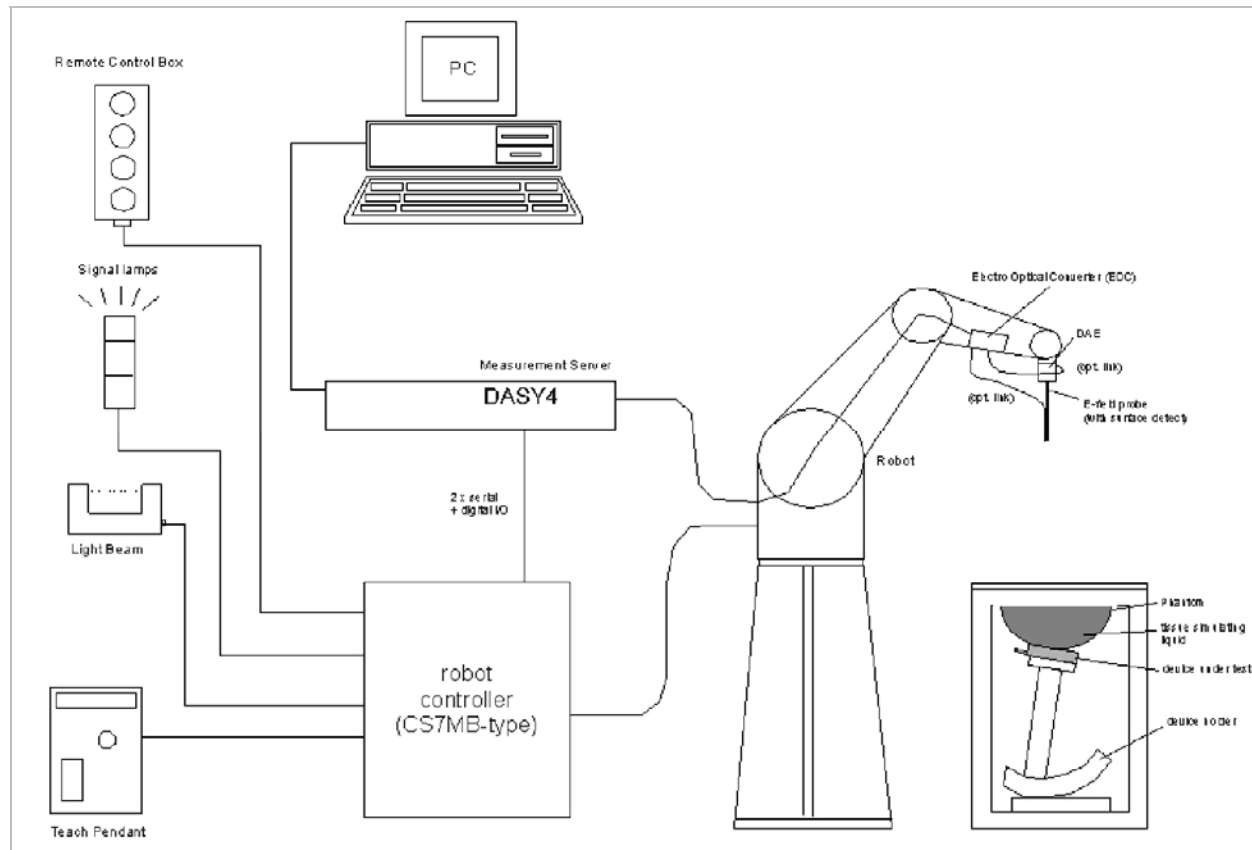
Measurement uncertainty for 300 MHz to 3 GHz averaged over 10 gram

Component	error, %	Probe Distribution	Divisor	Sensitivity	U (Xi), %
Measurement System					
Probe Calibration (k=1) @ 2450 MHz	5.50	Normal	1	1	5.50
Axial Isotropy	1.15	Rectangular	1.732	0.7071	0.47
Hemispherical Isotropy	2.30	Rectangular	1.732	0.7071	0.94
Boundary Effect	0.90	Rectangular	1.732	1	0.52
Probe Linearity	3.45	Rectangular	1.732	1	1.99
System Detection Limits	1.00	Rectangular	1.732	1	0.58
Readout Electronics	0.30	Normal	1	1	0.30
Response Time	0.80	Rectangular	1.732	1	0.46
Integration Time	2.60	Rectangular	1.732	1	1.50
RF Ambient Conditions - Noise	3.00	Rectangular	1.732	1	1.73
RF Ambient Conditions - Reflections	3.00	Rectangular	1.732	1	1.73
Probe Positioner Mechanical Tolerance	0.40	Rectangular	1.732	1	0.23
Probe Positioning with respect to Phantom	2.90	Rectangular	1.732	1	1.67
Extrapolation, Interpolation and Integration	1.00	Rectangular	1.732	1	0.58
Test Sample Related					
Test Sample Positioning	2.90	Normal	1	1	2.90
Device Holder Uncertainty	3.60	Normal	1	1	3.60
Output Power Variation - SAR Drift	5.00	Rectangular	1.732	1	2.89
Phantom and Tissue Parameters					
Phantom Uncertainty (shape and thickness)	4.00	Rectangular	1.732	1	2.31
Liquid Conductivity - deviation from target	5.00	Rectangular	1.732	0.43	1.24
Liquid Conductivity - measurement	2.91	Normal	1	0.43	1.25
Liquid Permittivity - deviation from target	5.00	Rectangular	1.732	0.49	1.41
Liquid Permittivity - measurement uncertainty	-1.82	Normal	1	0.49	-0.89
Combined Standard Uncertainty Uc(y), % =					9.41
Expanded Uncertainty U, Coverage Factor = 2, > 95 % Confidence =				18.83	%
Expanded Uncertainty U, Coverage Factor = 2, > 95 % Confidence =				1.50	dB

5. EQUIPMENT UNDER TEST

802.11g/Draft 802.11n WLAN PCI-E Minicard (Tested inside of laptop PC)							
Normal operation:	Lap-held only SAR test with display open at 90° to the keyboard						
Antenna tested:	Install in laptop PC <table border="0"> <tr> <td><u>Manufactured</u></td><td><u>Part number</u></td></tr> <tr> <td>Quanta Computer Inc</td><td>Tx1 (Main) Antenna: DQ643139000</td></tr> <tr> <td></td><td>Tx2 (Aux) Antenna: DQ643139000</td></tr> </table>	<u>Manufactured</u>	<u>Part number</u>	Quanta Computer Inc	Tx1 (Main) Antenna: DQ643139000		Tx2 (Aux) Antenna: DQ643139000
<u>Manufactured</u>	<u>Part number</u>						
Quanta Computer Inc	Tx1 (Main) Antenna: DQ643139000						
	Tx2 (Aux) Antenna: DQ643139000						
Antenna-to-user distances:	1.8 cm from Main (Tx1) antenna-to-user. 1.8 cm from Aux (Tx2) antenna-to-user.						
Antenna-to-Antenna distances:	<ul style="list-style-type: none"> 0 cm from Tx2-to-Bluetooth antenna (Tx2 antenna and Bluetooth are sharing a common antenna) > 5 cm from Tx1-to-Tx2/BT antenna 						
Simultaneous transmission:	WiFi (TX1) can transmit simultaneously with Bluetooth Bluetooth - CJ6UPA3829WB; IC ID: 248H-DPA3829W						
Assessment for SAR evaluation for Simultaneous transmission:	WiFi and BT KDB 447498 - The Bluetooth's output power is $\leq 60/f(\text{GHz})$ mW, which stand-alone SAR evaluation is not required. Thus, simultaneous transmission SAR evaluation is not required for WiFi and Bluetooth antenna pair.						

6. SYSTEM SPECIFICATIONS



The DASY4 system for performing compliance tests consists of the following items:

- A standard high precision 6-axis robot (Stäubli RX family) with controller, teach pendant and software. An arm extension for accommodating the data acquisition electronics (DAE).
- A dosimetric probe, i.e., an isotropic E-field probe optimized and calibrated for usage in tissue simulating liquid. The probe is equipped with an optical surface detector system.
- A data acquisition electronics (DAE) which performs the signal amplification, signal multiplexing, AD-conversion, offset measurements, mechanical surface detection, collision detection, etc. The unit is battery powered with standard or rechargeable batteries. The signal is optically transmitted to the EOC.
- The function of the measurement server is to perform the time critical tasks such as signal filtering, control of the robot operation and fast movement interrupts.
- A probe alignment unit which improves the (absolute) accuracy of the probe positioning.
- A computer operating Windows 2000 or Windows XP.
- DASY4 software.
- Remote controls with teach pendant and additional circuitry for robot safety such as warning lamps, etc.
- The SAM twin phantom enabling testing left-hand and right-hand usage.
- The device holder for handheld mobile phones.
- Tissue simulating liquid mixed according to the given recipes.
- Validation dipole kits allowing validating the proper functioning of the system.

7. COMPOSITION OF INGREDIENTS FOR TISSUE SIMULATING LIQUIDS

The following tissue formulations are provided for reference only as some of the parameters have not been thoroughly verified. The composition of ingredients may be modified accordingly to achieve the desired target tissue parameters required for routine SAR evaluation.

Ingredients (% by weight)	Frequency (MHz)									
	450		835		915		1900		2450	
Tissue Type	Head	Body	Head	Body	Head	Body	Head	Body	Head	Body
Water	38.56	51.16	41.45	52.4	41.05	56.0	54.9	40.4	62.7	73.2
Salt (NaCl)	3.95	1.49	1.45	1.4	1.35	0.76	0.18	0.5	0.5	0.04
Sugar	56.32	46.78	56.0	45.0	56.5	41.76	0.0	58.0	0.0	0.0
HEC	0.98	0.52	1.0	1.0	1.0	1.21	0.0	1.0	0.0	0.0
Bactericide	0.19	0.05	0.1	0.1	0.1	0.27	0.0	0.1	0.0	0.0
Triton X-100	0.0	0.0	0.0	0.0	0.0	0.0	0.0	0.0	36.8	0.0
DGBE	0.0	0.0	0.0	0.0	0.0	0.0	44.92	0.0	0.0	26.7
Dielectric Constant	43.42	58.0	42.54	56.1	42.0	56.8	39.9	54.0	39.8	52.5
Conductivity (S/m)	0.85	0.83	0.91	0.95	1.0	1.07	1.42	1.45	1.88	1.78

Salt: 99+% Pure Sodium Chloride

Sugar: 98+% Pure Sucrose

Water: De-ionized, 16 MΩ+ resistivity

HEC: Hydroxyethyl Cellulose

DGBE: 99+% Di(ethylene glycol) butyl ether, [2-(2-butoxyethoxy)ethanol]

Triton X-100 (ultra pure): Polyethylene glycol mono [4-(1,1, 3, 3-tetramethylbutyl)phenyl]ether

Simulating Liquids for 5 GHz, Manufactured by SPEAG

Ingredients	(% by weight)
Water	78
Mineral oil	11
Emulsifiers	9
Additives and Salt	2

8. TISSUE DIELECTRIC PARAMETERS CHECK

The simulating liquids should be checked at the beginning of a series of SAR measurements to determine if the dielectric parameters are within the tolerances of the specified target values. For frequencies in 300 MHz to 2 GHz, the measured conductivity and relative permittivity should be within $\pm 5\%$ of the target values. For frequencies in the range of 2–3 GHz and above the measured conductivity should be within $\pm 5\%$ of the target values. The measured relative permittivity tolerance can be relaxed to no more than $\pm 10\%$.

Reference Values of Tissue Dielectric Parameters for Body (for 300 – 3000 MHz and 5800 MHz)

The body tissue parameters that have not been specified in P1528 are derived from the tissue dielectric parameters computed from the 4-Cole-Cole equations and extrapolated according to the head parameters specified in IEEE Standard 1528.

Target Frequency (MHz)	Body (Supplement C 01-01)	
	ϵ_r	σ (S/m)
300	58.20	0.92
450	56.70	0.94
835	55.20	0.97
900	55.00	1.05
915	55.00	1.06
1450	54.00	1.30
1610	53.80	1.40
1800 – 2000	53.30	1.52
2450	52.70	1.95
3000	52.00	2.73
5800	48.20	6.00

(ϵ_r = relative permittivity, σ = conductivity and $\rho = 1000 \text{ kg/m}^3$)

8.1. LIQUID CHECK RESULTS FOR 2450 MHZ

Simulating Liquid Dielectric Parameters for Body 2450 MHz

Room Ambient Temperature = 24°C; Relative humidity = 40%

Measured by: Devin Chang

f (MHz)	Liquid Parameters			Measured	Target	Delta (%)	Limit (%)
2450	e'	51.74	Relative Permittivity (ϵ_r):	51.740	52.7	-1.82	± 5
	e"	14.72	Conductivity (σ):	2.007	1.95	2.91	± 5

Liquid Check

Ambient temperature: 24 deg. C; Liquid temperature: 23 deg. C

June 21, 2010 09:27 AM

Frequency	e'	e"
2400000000.	52.0100	14.5511
2405000000.	51.9829	14.5320
2410000000.	51.9647	14.5350
2415000000.	51.9371	14.5338
2420000000.	51.9035	14.5572
2425000000.	51.8770	14.5858
2430000000.	51.8323	14.6200
2435000000.	51.7957	14.6415
2440000000.	51.7667	14.6569
2445000000.	51.7649	14.6838
2450000000.	51.7397	14.7234
2455000000.	51.7434	14.7705
2460000000.	51.7536	14.8248
2465000000.	51.7553	14.8888
2470000000.	51.7460	14.9525
2475000000.	51.7537	14.9933
2480000000.	51.7147	15.0370
2485000000.	51.6981	15.0556
2490000000.	51.6764	15.0489
2495000000.	51.6717	15.0515
2500000000.	51.6606	15.0535

The conductivity (σ) can be given as:

$$\sigma = \omega \epsilon_0 e'' = 2 \pi f \epsilon_0 e''$$

where $f = \text{target } f * 10^6$

$$\epsilon_0 = 8.854 * 10^{-12}$$

9. SYSTEM VERIFICATION

The system performance check is performed prior to any usage of the system in order to verify SAR system measurement accuracy. The system performance check verifies that the system operates within its specifications of $\pm 10\%$.

System Performance Check Measurement Conditions

- The measurements were performed in the flat section of the SAM twin phantom filled with Body simulating liquid of the following parameters.
- The DASY4 system with an Isotropic E-Field Probe EX3DV3-SN: 3531 was used for the measurements.
- The dipole was mounted on the small tripod so that the dipole feed point was positioned below the center marking of the flat phantom section and the dipole was oriented parallel to the body axis (the long side of the phantom). The standard measuring distance was 10 mm (above 1 GHz) and 15 mm (below 1 GHz) from dipole center to the simulating liquid surface.
- The coarse grid with a grid spacing of 15 mm was aligned with the dipole.
For 5 GHz band - The coarse grid with a grid spacing of 10 mm was aligned with the dipole.
- Special 7x7x7 (2.4 GHz) fine cube was chosen for cube integration and Special 8x8x10 (5 GHz) fine cube was chosen for cube integration
- Distance between probe sensors and phantom surface was set to 3mm.
For 5 GHz band - Distance between probe sensors and phantom surface was set to 2.5 mm
- The dipole input power (forward power) were 100 mW
- The results are normalized to 1 W input power.

Reference SAR Values for HEAD & BODY-tissue from calibration certificate of SPEAG

System validation dipole	Cal. certificate #	Cal. due date	SAR Avg (mW/g)		
			Tissue:	Head	Body
D2450V2	D2450V2-706_Apr10	04/18/13	SAR _{1g} :		52.4
			SAR _{10g} :		24.5

9.1. SYSTEM CHECK RESULTS FOR D2450V2

Ambient Temperature = 24°C; Relative humidity = 40%

Measured by: Devin Chang

System validation dipole	Date Tested	Measured (Normalized to 1 W)		Target	Delta (%)	Tolerance (%)
		Tissue:	Body			
D2450V2	06/21/10	SAR _{1g} :	53.3	52.4	1.72	± 10
		SAR _{10g} :	24.9	24.5	1.63	

SYSTEM CHECK PLOT

Date/Time: 6/21/2010 9:39:38 AM

Test Laboratory: Compliance Certification Services

System Performance Check - D2450V2

DUT: Dipole ; Type: D2450V2; Serial: 706

Communication System: System Check Signal - CW; Frequency: 2450 MHz; Duty Cycle: 1:1

Medium parameters used: $f = 2450$ MHz; $\sigma = 2.01$ mho/m; $\epsilon_r = 51.7$; $\rho = 1000$ kg/m³

Phantom section: Flat Section

Room Ambient Temperature: 24.0 deg. C; Liquid Temperature: 23.0 deg. C

DASY4 Configuration:

- Area Scan setting - Find Secondary Maximum Within: 2.0 dB and with a peak SAR value greater than 0.0012W/kg
- Probe: EX3DV3 - SN3531; ConvF(7.58, 7.58, 7.58); Calibrated: 2/23/2010
- Sensor-Surface: 3mm (Mechanical Surface Detection)
- Electronics: DAE3 Sn500; Calibrated: 9/15/2009
- Phantom: Flat Phantom ELI4.0; Type: QDOVA001BA; Serial: SN:1003
- Measurement SW: DASY4, V4.7 Build 80; Postprocessing SW: SEMCAD, V1.8 Build 186

d=10mm, Pin=100mW/Area Scan (7x7x1): Measurement grid: dx=15mm, dy=15mm

Maximum value of SAR (measured) = 6.83 mW/g

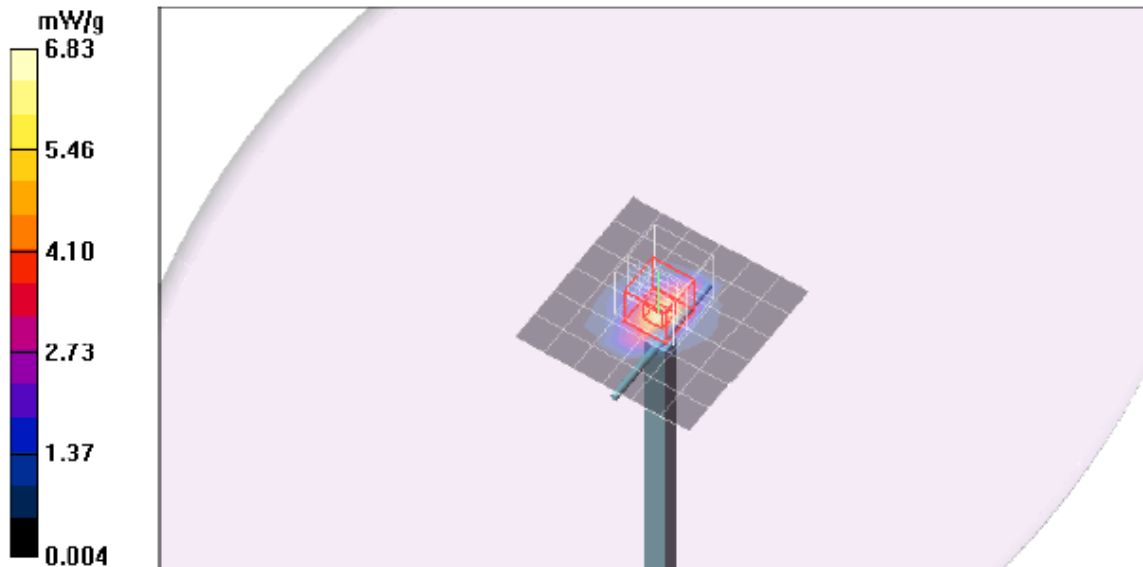
d=10mm, Pin=100mW/Zoom Scan (7x7x7)/Cube 0: Measurement grid: dx=5mm, dy=5mm, dz=5mm

Reference Value = 58.2 V/m; Power Drift = 0.170 dB

Peak SAR (extrapolated) = 10.8 W/kg

SAR(1 g) = 5.33 mW/g; SAR(10 g) = 2.49 mW/g

Maximum value of SAR (measured) = 7.01 mW/g



SYSTEM CHECK – Z Plot

Date/Time: 6/21/2010 9:56:25 AM

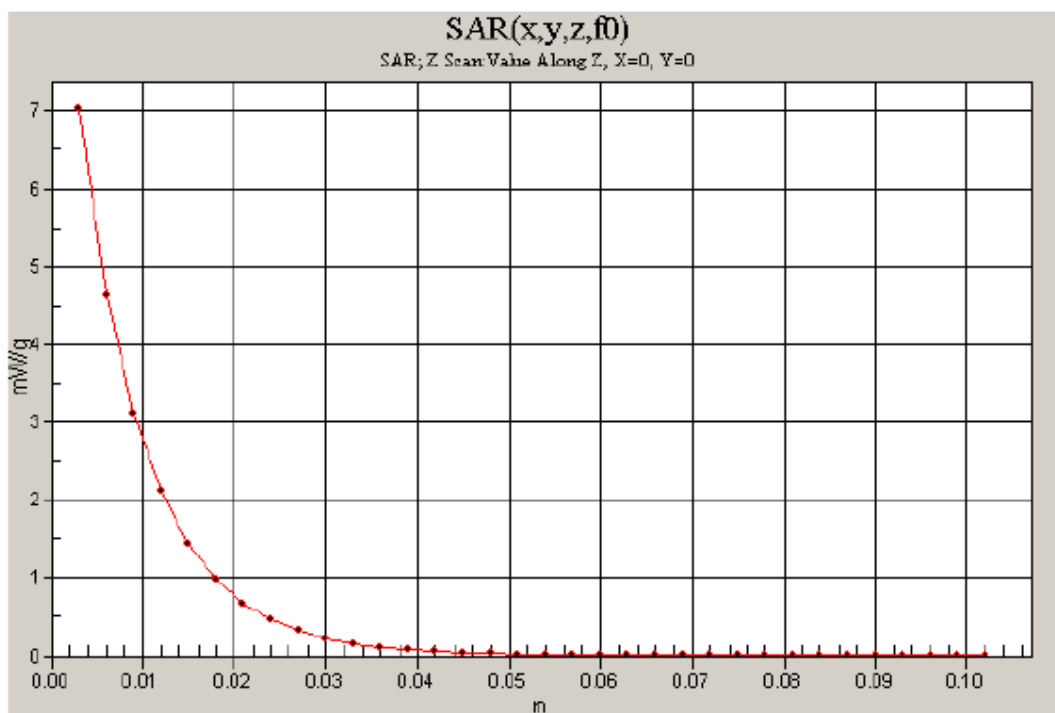
Test Laboratory: Compliance Certification Services

System Performance Check - D2450V2

DUT: Dipole ; Type: D2450V2; Serial: 706

Communication System: System Check Signal - CW; Frequency: 2450 MHz; Duty Cycle: 1:1

d=10mm, Pin=100mW/Z Scan (1x1x34): Measurement grid: dx=20mm, dy=20mm, dz=3mm
Maximum value of SAR (measured) = 7.02 mW/g



10. OUTPUT POWER VERIFICATION

The following procedures had been used to prepare the EUT for the SAR test.

The client provided a special driver and program, wl_tools, which enable a tester to control the frequency and output power of the module.

RF Conducted Peak Output Power Measurement Results:

Mode	Channel	Freq. (MHz)	Peak Output Power (dBm)
802.11b	1	2412	22.6
	6	2437	22.9
	11	2462	20.5
802.11g	1	2412	26.1
	6	2437	26.2
	11	2462	20.5

11. SUMMARY OF TEST RESULTS

Lap-held only (SAR test with display open at 90° to the keyboard)

Mode	Channel	f (MHz)	Antenna	Results (mW/g)	
				1g-SAR	10g-SAR
802.11b	1	2412	Main		
	6	2437	Main	0.275	0.137
	11	2462	Main		
802.11g	1	2412	Aux		
	6	2437	Aux	0.304	0.153
	11	2462	Aux		

Notes:

1. 802.11b doesn't operate for Aux antenna. Thus, 802.11g is performed for Aux antenna instead.
2. SAR is not required for 11n (20MHz SISO) due to this mode is covered by the 802.11g mode.

12. SAR TEST PLOTS

SAR PLOT FOR 2.4 GHZ

Date/Time: 6/21/2010 10:32:08 AM

Test Laboratory: Compliance Certification Services

Laptop Mode_Lap-hepd

DUT: Broadcom; Type: NA; Serial: NA

Communication System: 802.11bgn; Frequency: 2437 MHz; Duty Cycle: 1:1

Medium parameters used (interpolated): $f = 2437$ MHz; $\sigma = 1.99$ mho/m; $\epsilon_r = 51.8$; $\rho = 1000$ kg/m³

Phantom section: Flat Section

Room Ambient Temperature: 24.0 deg. C; Liquid Temperature: 23.0 deg. C

DASY4 Configuration:

- Area Scan setting - Find Secondary Maximum Within: 2.0 dB and with a peak SAR value greater than 0.0012W/kg
- Probe: EX3DV3 - SN3531; ConvF(7.58, 7.58, 7.58); Calibrated: 2/23/2010
- Sensor-Surface: 3mm (Mechanical Surface Detection)
- Electronics: DAE3 Sn500; Calibrated: 9/15/2009
- Phantom: Flat Phantom ELI4.0; Type: QDOVA001BA; Serial: SN:1003
- Measurement SW: DASY4, V4.7 Build 80; Postprocessing SW: SEMCAD, V1.8 Build 186

802.11b M-ch Main Ant/Area Scan (6x10x1): Measurement grid: dx=15mm, dy=15mm

[Info: Interpolated medium parameters used for SAR evaluation.](#)

Maximum value of SAR (measured) = 0.312 mW/g

802.11b M-ch Main Ant/Zoom Scan (7x7x9)/Cube 0: Measurement grid: dx=5mm, dy=5mm, dz=3mm

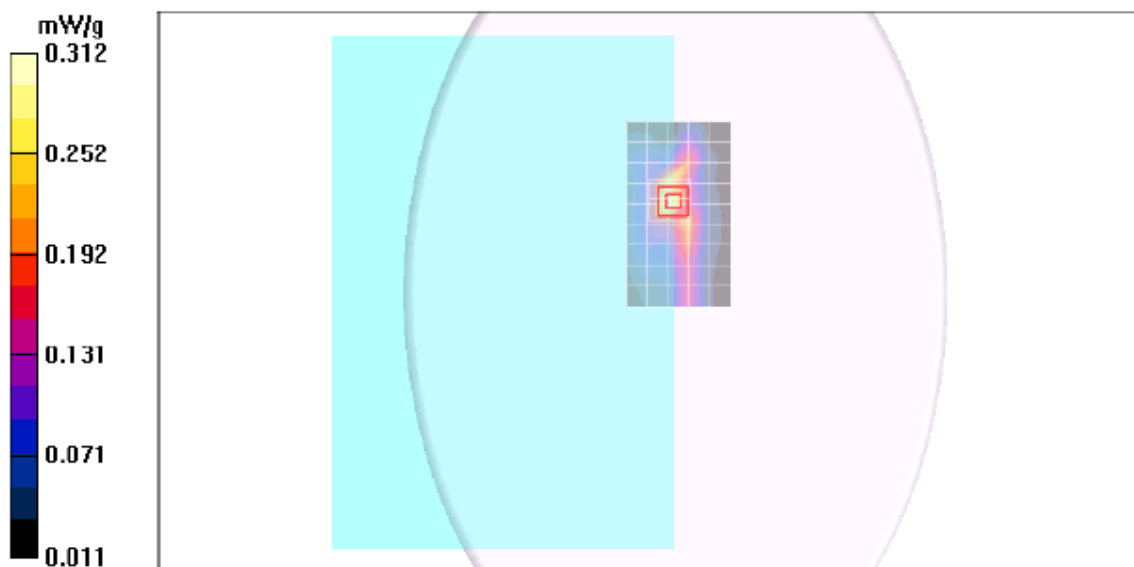
Reference Value = 12.5 V/m; Power Drift = -0.228 dB

Peak SAR (extrapolated) = 0.593 W/kg

SAR(1 g) = 0.275 mW/g; SAR(10 g) = 0.137 mW/g

[Info: Interpolated medium parameters used for SAR evaluation.](#)

Maximum value of SAR (measured) = 0.349 mW/g



Date/Time: 6/21/2010 1:36:54 PM

Test Laboratory: Compliance Certification Services

Laptop Mode_Lap-hepd

DUT: Broadcom; Type: NA; Serial: NA

Communication System: 802.11bgn; Frequency: 2437 MHz; Duty Cycle: 1:1

Medium parameters used (interpolated): $f = 2437$ MHz; $\sigma = 1.99$ mho/m; $\epsilon_r = 51.8$; $\rho = 1000$ kg/m³

Phantom section: Flat Section

Room Ambient Temperature: 24.0 deg. C; Liquid Temperature: 23.0 deg. C

DASY4 Configuration:

- Area Scan setting - Find Secondary Maximum Within: 2.0 dB and with a peak SAR value greater than 0.0012W/kg
- Probe: EX3DV3 - SN3531; ConvF(7.58, 7.58, 7.58); Calibrated: 2/23/2010
- Sensor-Surface: 3mm (Mechanical Surface Detection)
- Electronics: DAE3 Sn500; Calibrated: 9/15/2009
- Phantom: Flat Phantom ELI4.0; Type: QDOVA001BA; Serial: SN:1003
- Measurement SW: DASY4, V4.7 Build 80; Postprocessing SW: SEMCAD, V1.8 Build 186

802.11g M-ch Aux Ant/Area Scan (6x10x1): Measurement grid: dx=15mm, dy=15mm

[Info: Interpolated medium parameters used for SAR evaluation.](#)

Maximum value of SAR (measured) = 0.372 mW/g

802.11g M-ch Aux Ant/Zoom Scan (7x7x9)/Cube 0: Measurement grid: dx=5mm, dy=5mm, dz=3mm

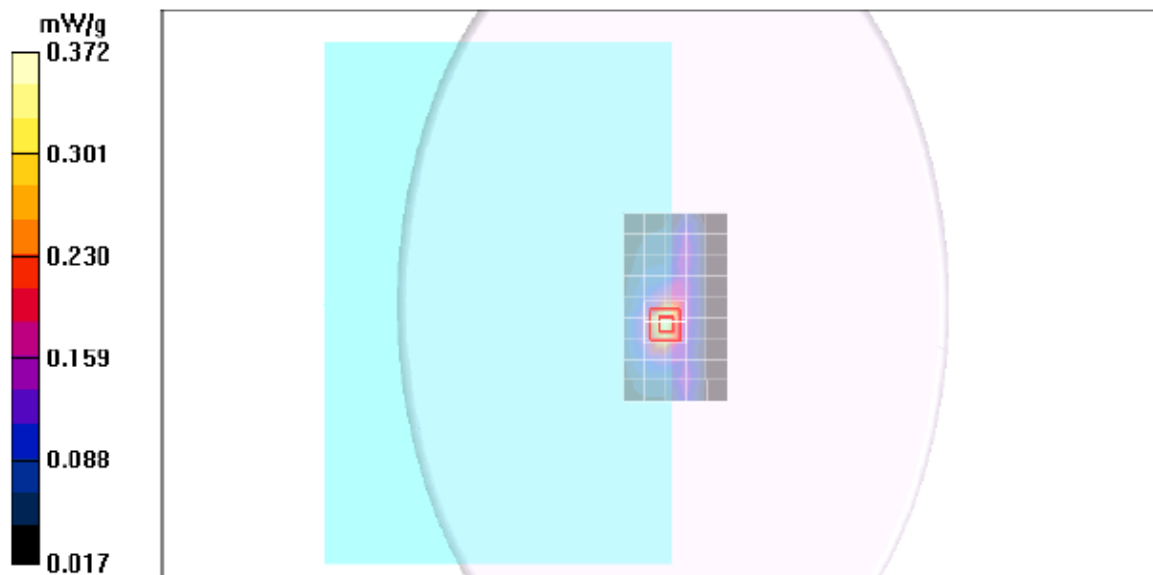
Reference Value = 13.8 V/m; Power Drift = -0.191 dB

Peak SAR (extrapolated) = 0.639 W/kg

SAR(1 g) = 0.304 mW/g; SAR(10 g) = 0.153 mW/g

[Info: Interpolated medium parameters used for SAR evaluation.](#)

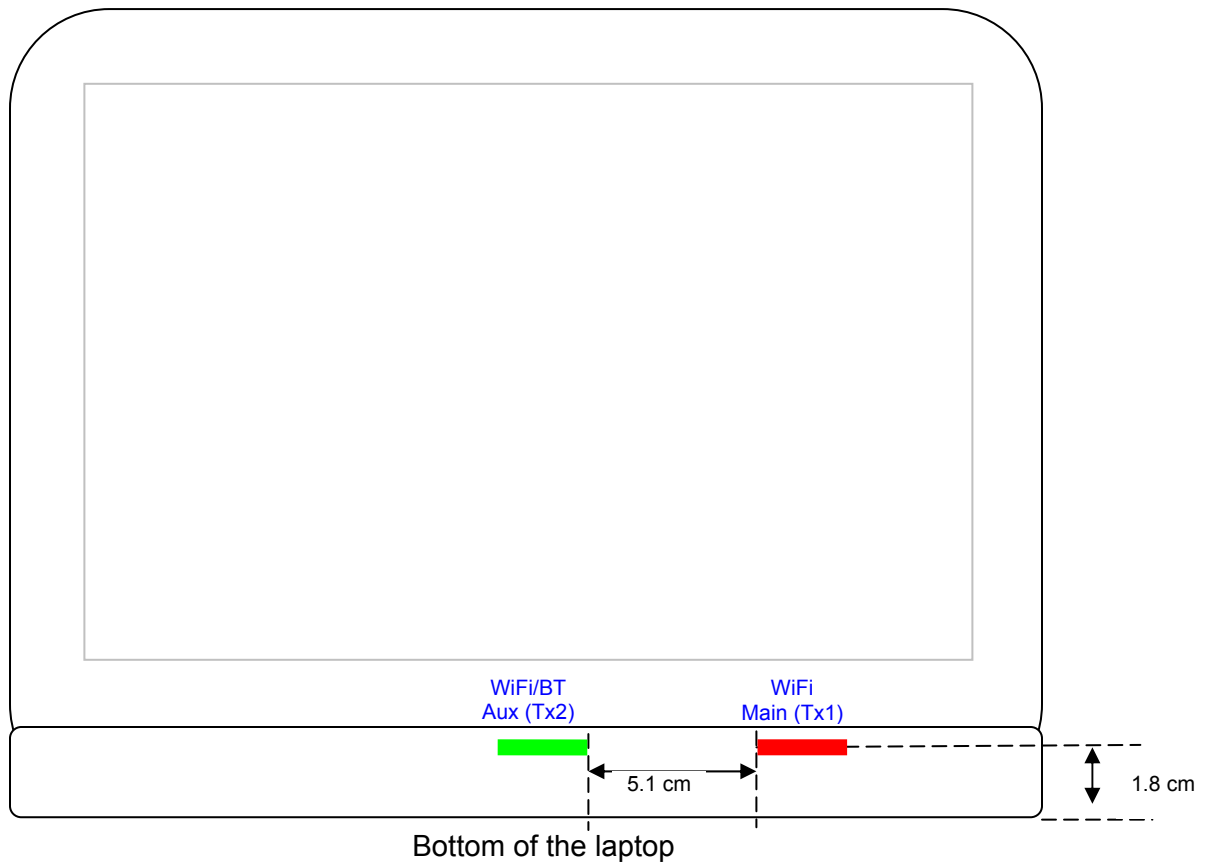
Maximum value of SAR (measured) = 0.393 mW/g



13. ATTACHMENTS

<u>No.</u>	<u>Contents</u>	<u>No. of page (s)</u>
1	Certificate of E-Field Probe - EX3DV3 SN 3531	11
2	Certificate of System Validation Dipole D2450V2 SN 706	6

14. ANTENNA TO USER SEPARATION DISTANCES



Note: Aux (TX2) antenna and Bluetooth antenna are sharing a common antenna