

# TOSHIBA FCC ID: CJ6DCE46036A -- FM Head SAR

SAM Phantom; Right Hand Section; Probe:ET3DV6 - SN1677; ConvF(6.70,6.70,6.70)

Med. Parameters 835 MHz Brain:  $\sigma = 0.87$  mho/m  $\epsilon_r = 43.4$   $\rho = 1.00$  g/cm<sup>3</sup>; Antenna Position -- In; Crest Factor 1.0

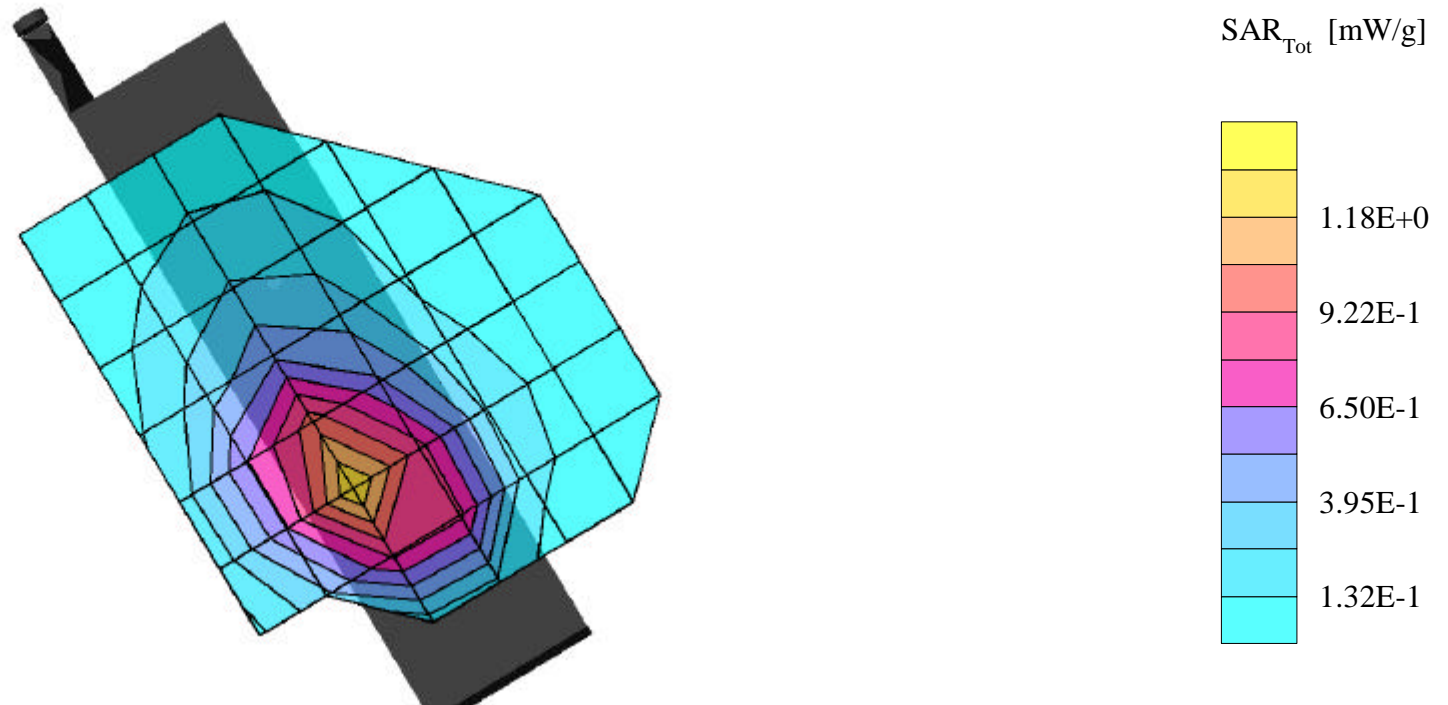
SAR (1g): 1.33 mW/g, SAR (10g): 0.877 mW/g

Toshiba TriMode Phone Model: CDM-9500 [remeasured w/tape only]

FM Mode, Ch.0991 [824.04MHz]; Standard Battery; Flip = open; Ambient Temp. = 22.1°C / Meas. Tissue Temp. = 22.0°C

Conducted Power = 27.2dBm; Right Head Phantom, Cheek/Touch position

Test Date - 06/07/2002 [FCC/OET Bulletin 65 - Supplement C, July 2001]



# TOSHIBA FCC ID: CJ6DCE46036A -- FM Head SAR

SAM Phantom; Right Hand Section; Probe:ET3DV6 - SN1677; ConvF(6.70,6.70,6.70)

Med. Parameters 835 MHz Brain:  $\sigma = 0.87$  mho/m  $\epsilon_r = 43.4$   $\rho = 1.00$  g/cm<sup>3</sup>; Antenna Position -- In; Crest Factor 1.0

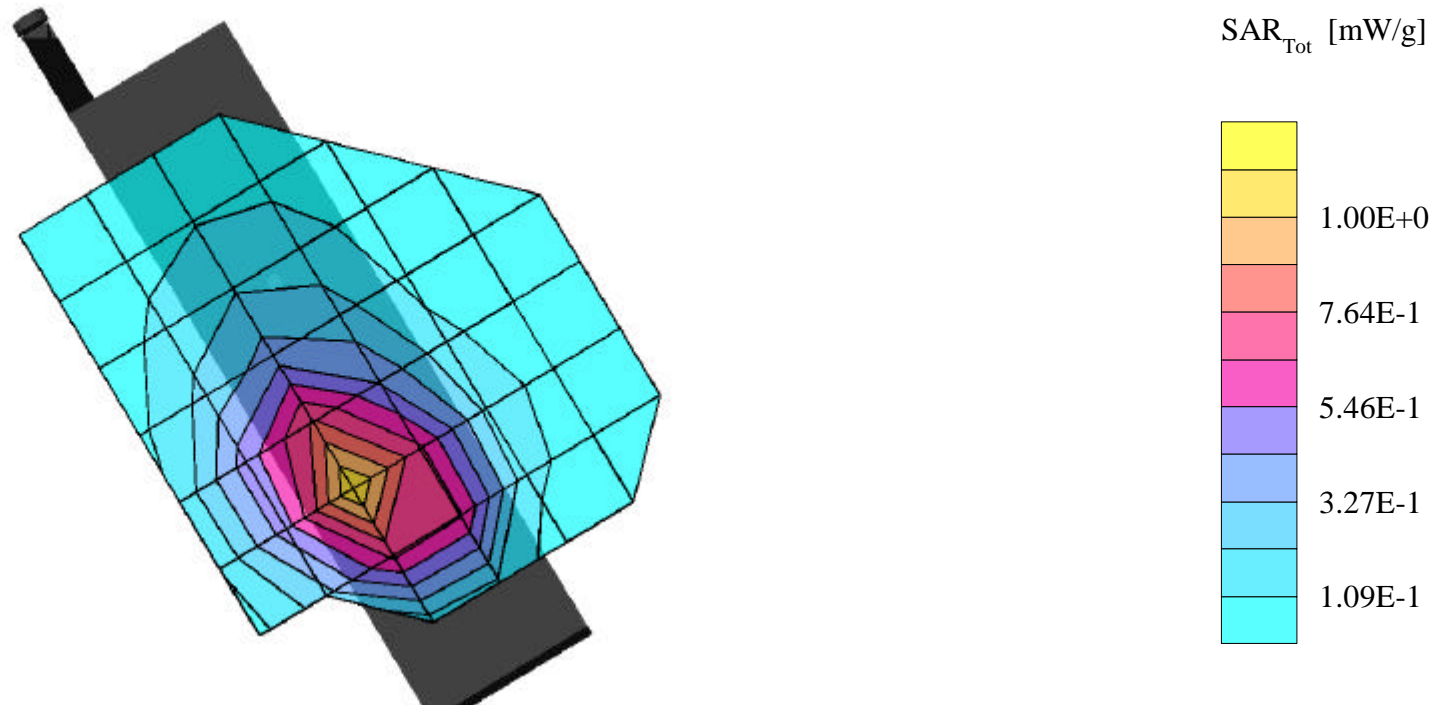
SAR (1g): 1.07 mW/g, SAR (10g): 0.717 mW/g

Toshiba TriMode Phone Model: CDM-9500 [remeasured w/tape only]

FM Mode, Ch.0383 [836.49MHz]; Standard Battery; Flip = open; Ambient Temp. = 22.1°C / Meas. Tissue Temp. = 22.0°C

Conducted Power = 27.2dBm; Right Head Phantom, Cheek/Touch position

Test Date - 06/07/2002 [FCC/OET Bulletin 65 - Supplement C, July 2001]



# TOSHIBA FCC ID: CJ6DCE46036A -- FM Head SAR

SAM Phantom; Right Hand Section; Probe:ET3DV6 - SN1677; ConvF(6.70,6.70,6.70)

Med. Parameters 835 MHz Brain:  $\sigma = 0.87$  mho/m  $\epsilon_r = 43.4$   $\rho = 1.00$  g/cm<sup>3</sup>; Antenna Position -- In; Crest Factor 1.0

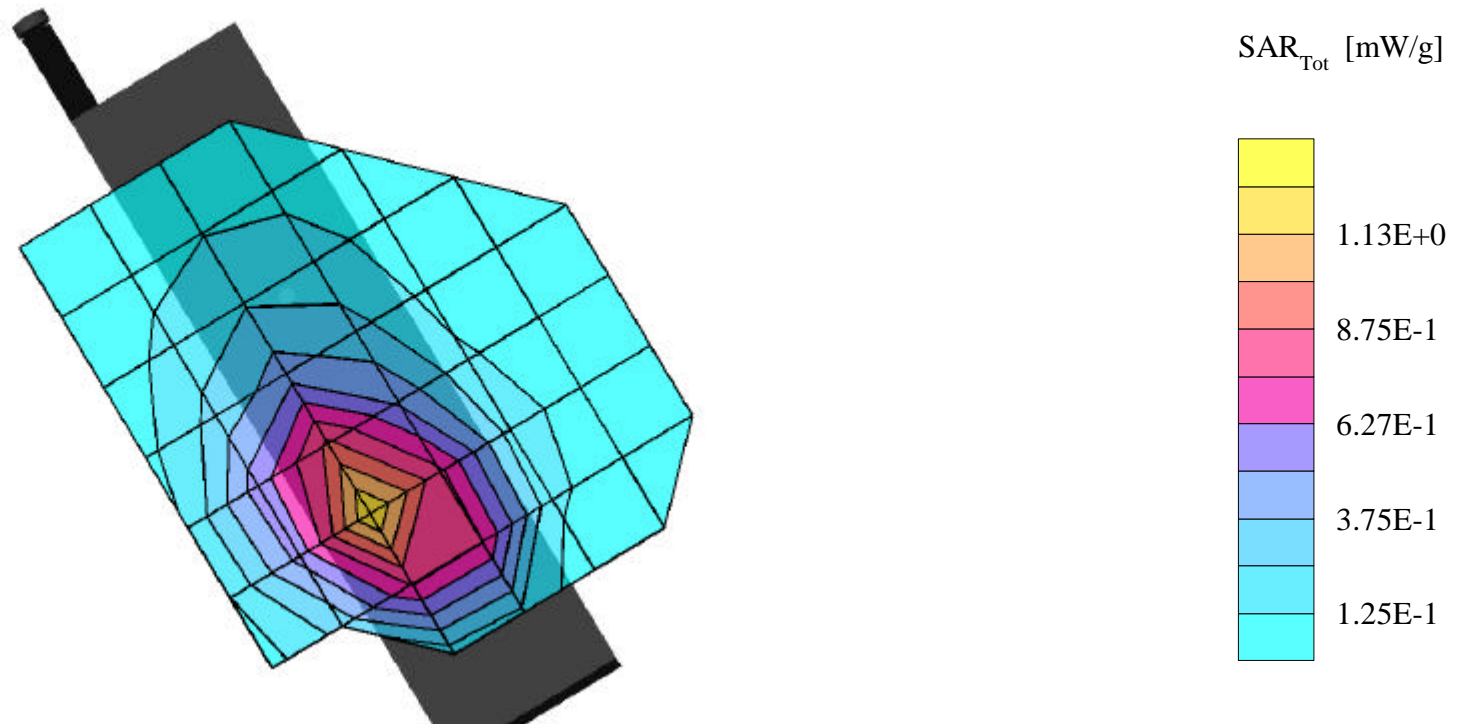
SAR (1g): 1.21 mW/g, SAR (10g): 0.802 mW/g

Toshiba TriMode Phone Model: CDM-9500 [remeasured w/tape only]

FM Mode, Ch.0799 [848.97MHz]; Standard Battery; Flip = open; Ambient Temp. = 22.1°C / Meas. Tissue Temp. = 22.0°C

Conducted Power = 27.2dBm; Right Head Phantom, Cheek/Touch position

Test Date - 06/07/2002 [FCC/OET Bulletin 65 - Supplement C, July 2001]



# TOSHIBA FCC ID: CJ6DCE46036A -- FM Head SAR

SAM Phantom; Right Hand Section; Probe:ET3DV6 - SN1677; ConvF(6.70,6.70,6.70)

Med. Parameters 835 MHz Brain:  $\sigma = 0.87$  mho/m  $\epsilon_r = 43.4$   $\rho = 1.00$  g/cm<sup>3</sup>; Antenna Position -- In; Crest Factor 1.0

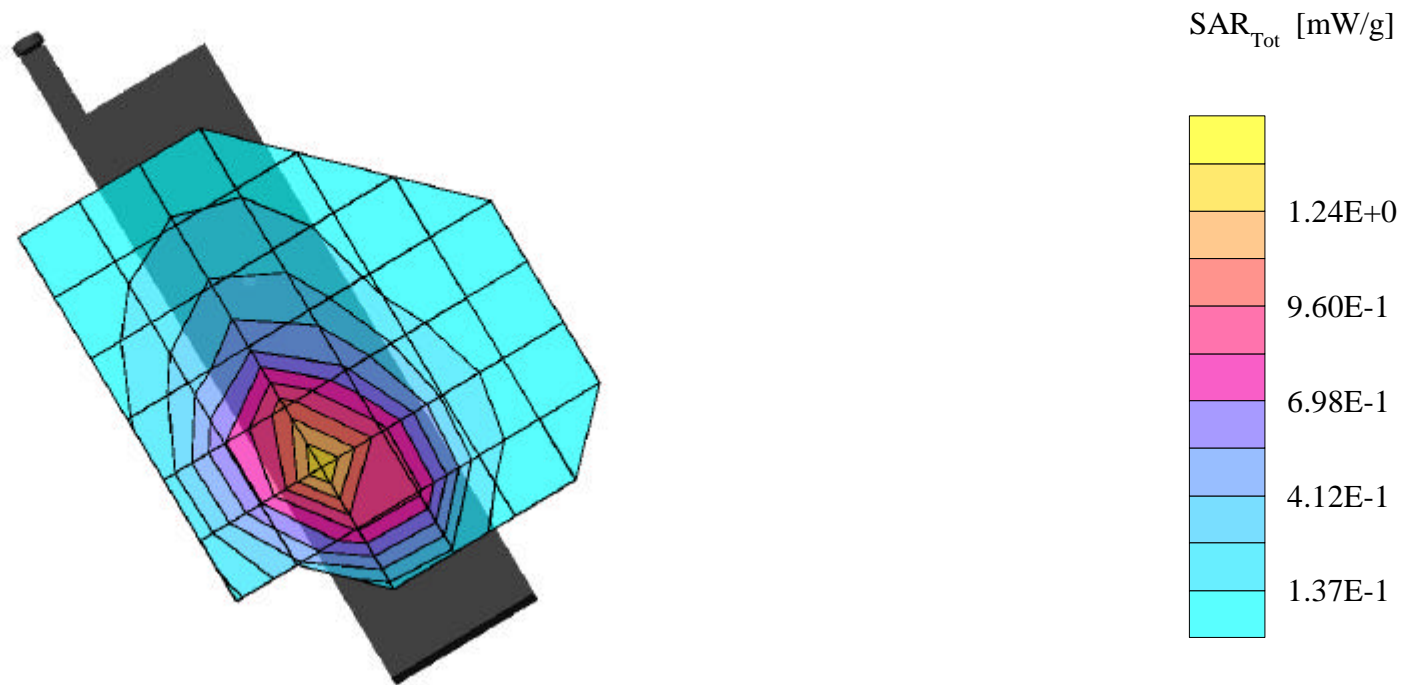
SAR (1g): 1.35 mW/g, SAR (10g): 0.913 mW/g

Toshiba TriMode Phone Model: CDM-9500 [remeasured w\_holder in new position]

FM Mode, Ch.0991 [824.04MHz]; Standard Battery; Flip = open; Ambient Temp. = 22.1°C / Meas. Tissue Temp. = 22.0°C

Conducted Power = 27.2dBm; Right Head Phantom, Cheek/Touch position

Test Date - 06/07/2002 [FCC/OET Bulletin 65 - Supplement C, July 2001]



# TOSHIBA FCC ID: CJ6DCE46036A -- FM Head SAR

SAM Phantom; Right Hand Section; Probe:ET3DV6 - SN1677; ConvF(6.70,6.70,6.70)

Med. Parameters 835 MHz Brain:  $\sigma = 0.87$  mho/m  $\epsilon_r = 43.4$   $\rho = 1.00$  g/cm<sup>3</sup>; Antenna Position -- In; Crest Factor 1.0

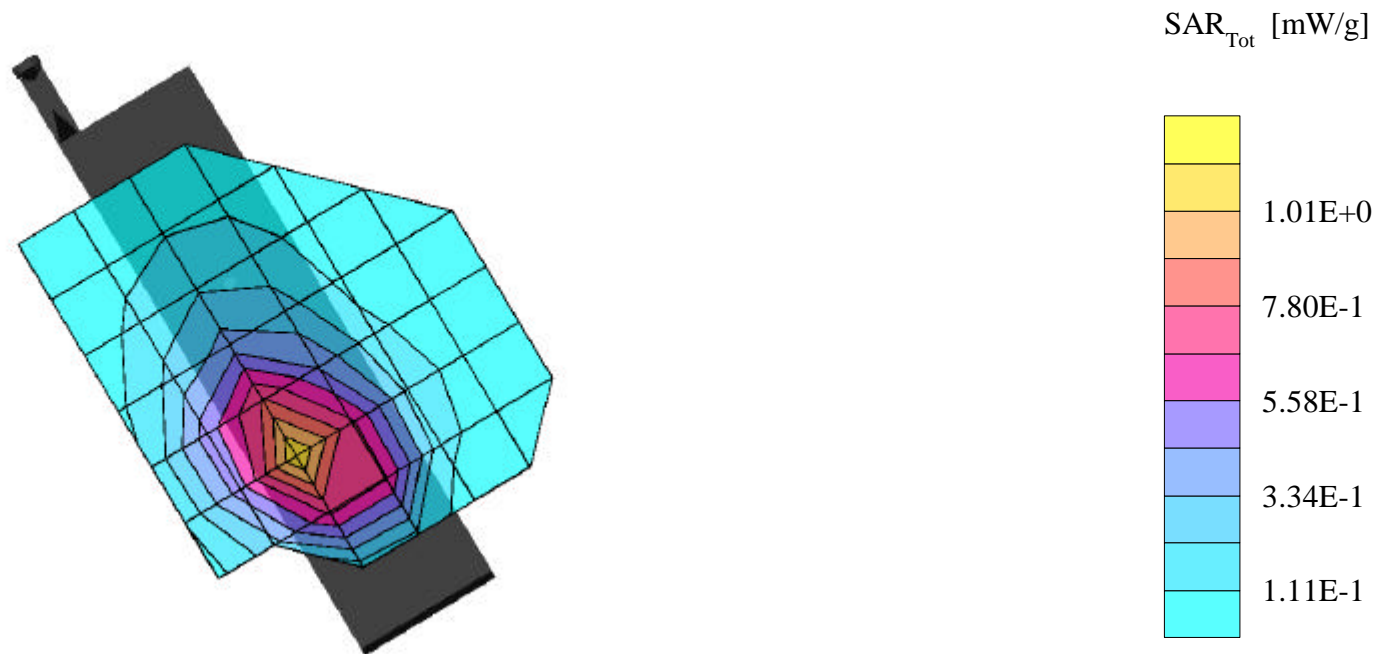
SAR (1g): 1.09 mW/g, SAR (10g): 0.733 mW/g

Toshiba TriMode Phone Model: CDM-9500 [remeasured w\_holder in new position]

FM Mode, Ch.0383 [836.49MHz]; Standard Battery; Flip = open; Ambient Temp. = 22.1°C / Meas. Tissue Temp. = 22.0°C

Conducted Power = 27.2dBm; Right Head Phantom, Cheek/Touch position

Test Date - 06/07/2002 [FCC/OET Bulletin 65 - Supplement C, July 2001]



# TOSHIBA FCC ID: CJ6DCE46036A -- FM Head SAR

SAM Phantom; Right Hand Section; Probe:ET3DV6 - SN1677; ConvF(6.70,6.70,6.70)

Med. Parameters 835 MHz Brain:  $\sigma = 0.87$  mho/m  $\epsilon_r = 43.4$   $\rho = 1.00$  g/cm<sup>3</sup>; Antenna Position -- In; Crest Factor 1.0

SAR (1g): 1.17 mW/g, SAR (10g): 0.778 mW/g

Toshiba TriMode Phone Model: CDM-9500 [remeasured w\_holder in new position]

FM Mode, Ch.0799 [848.97MHz]; Standard Battery; Flip = open; Ambient Temp. = 22.1°C / Meas. Tissue Temp. = 22.0°C

Conducted Power = 27.2dBm; Right Head Phantom, Cheek/Touch position

Test Date - 06/07/2002 [FCC/OET Bulletin 65 - Supplement C, July 2001]

