



**PHOTOGRAPHS OF A  
AN INDUCTIVE PROXIMITY CARD READER,  
OPERATING ON 120 kHz  
BRAND NEDAP, MODEL PROX BOOSTER 2G**

FCC listed : 90828  
Industry Canada : 2932G-1  
VCCI Registered : R-1518, C-1598  
R&TTE, LVD, EMC Notified Body : 1856

**TÜV Rheinland EPS B.V.**  
P.O. Box 37  
9350 AA Leek (NL)  
Eiberkamp 10  
9351 VT Leek (NL)

Telephone: +31 594 505005  
Telefax: +31 594 504804

E-mail: [info@tuv-eps.com](mailto:info@tuv-eps.com)  
Internet: [www.tuv-eps.com](http://www.tuv-eps.com)

**Description of test item**

Test item : Inductive Proximity Card Reader  
Manufacturer : N.V. Nederlandsche Apparatenfabriek Nedap  
Brand : Nedap  
Model : Prox Booster 2G  
Serial number(s) : --

**Applicant information**

Applicant's representative : Mr. J.A.M. Hulshof  
Company : N.V. Nederlandsche Apparatenfabriek "Nedap"  
Address : Parallelweg 2  
Postal code : 7141 DC  
City : Groenlo  
Country : The Netherlands  
Telephone number : +31 (0)544 471162  
Telefax number : +31 (0)544 463475

## Table of contents

1	Photographs of the equipment .....	4
1.1	Top view.....	4
1.2	Rear view .....	5
1.3	Internal view .....	6
1.4	PCB top view .....	7
1.5	PCB rear view .....	8

# 1 Photographs of the equipment

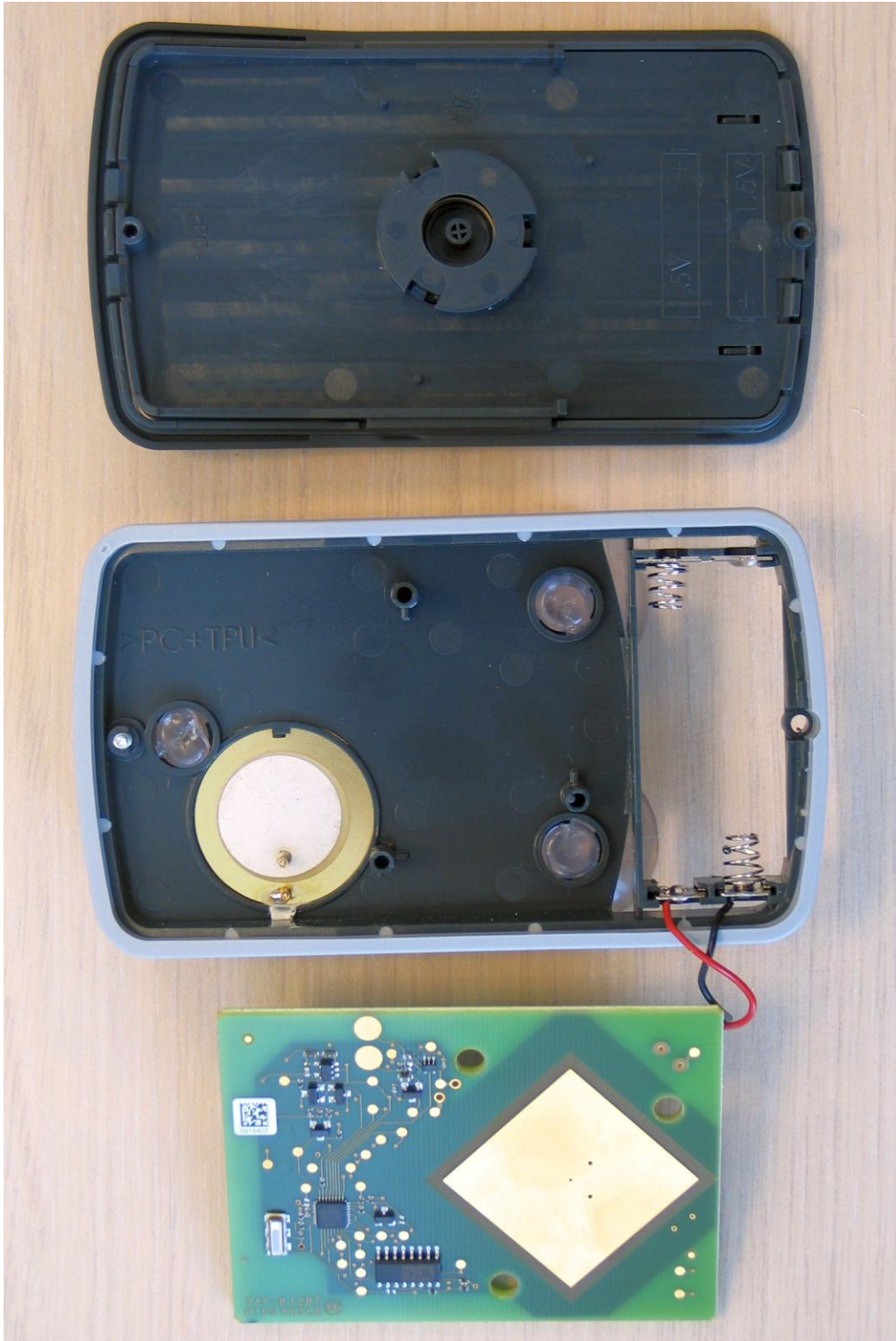
## 1.1 Top view



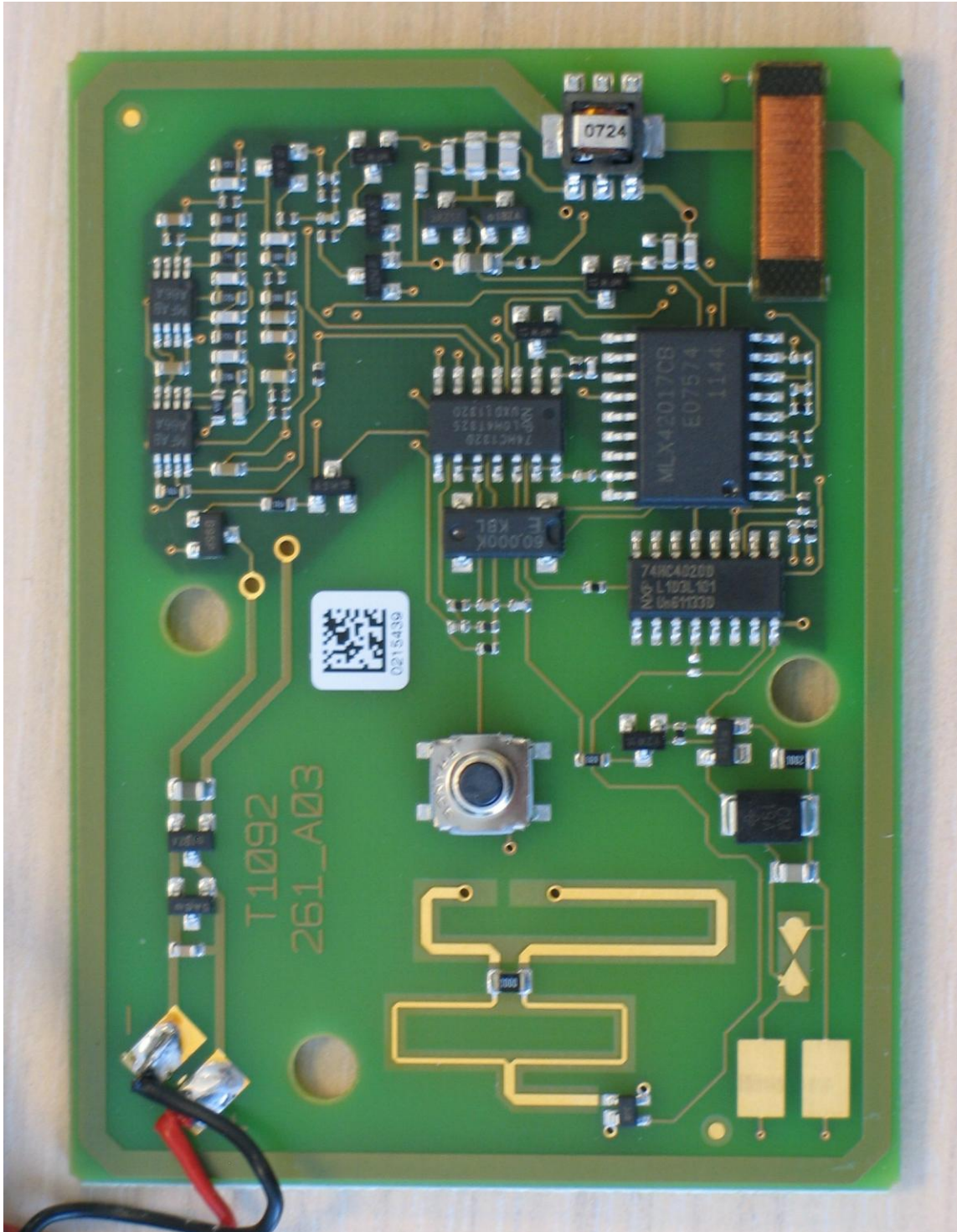
## 1.2 Rear view



### 1.3 Internal view



## 1.4 PCB top view



## 1.5 PCB rear view

