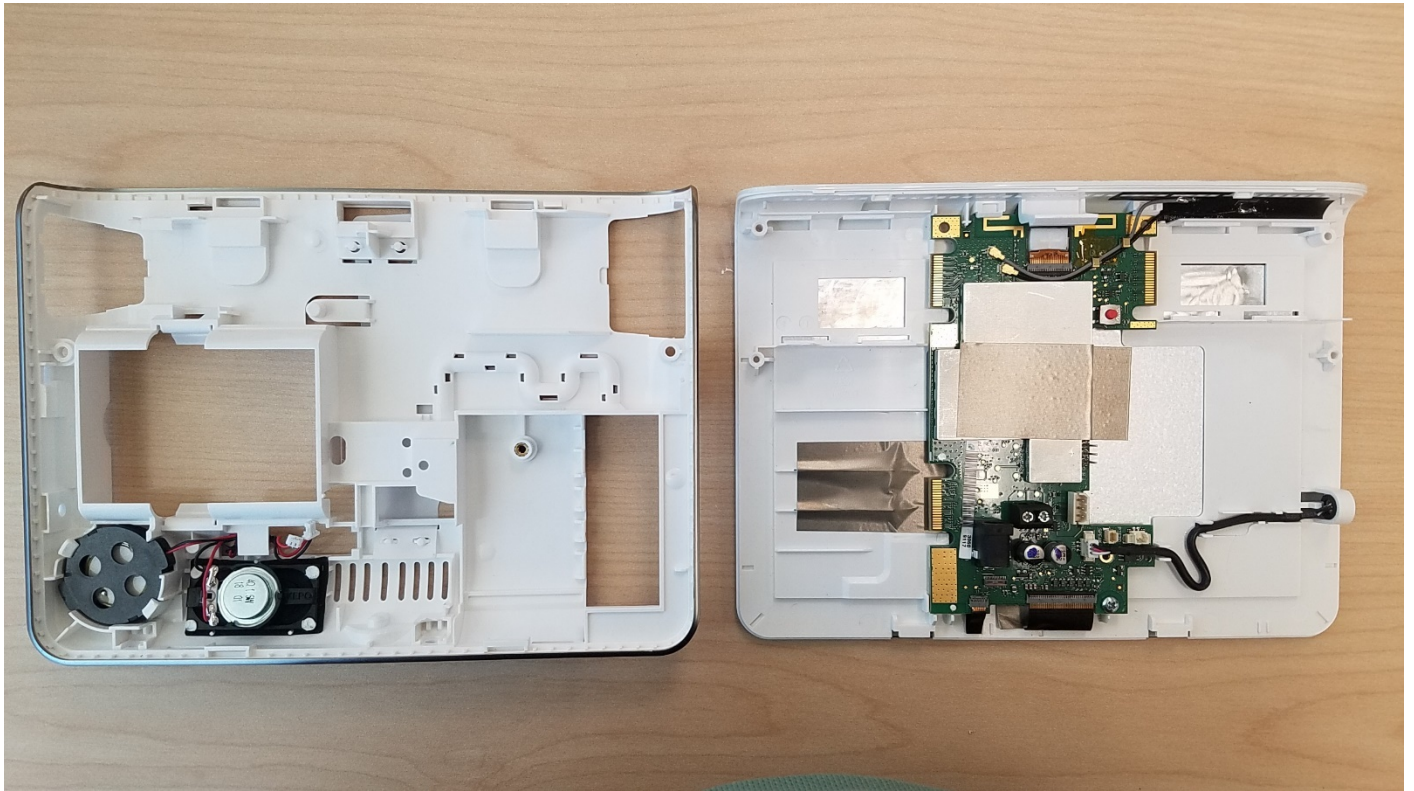
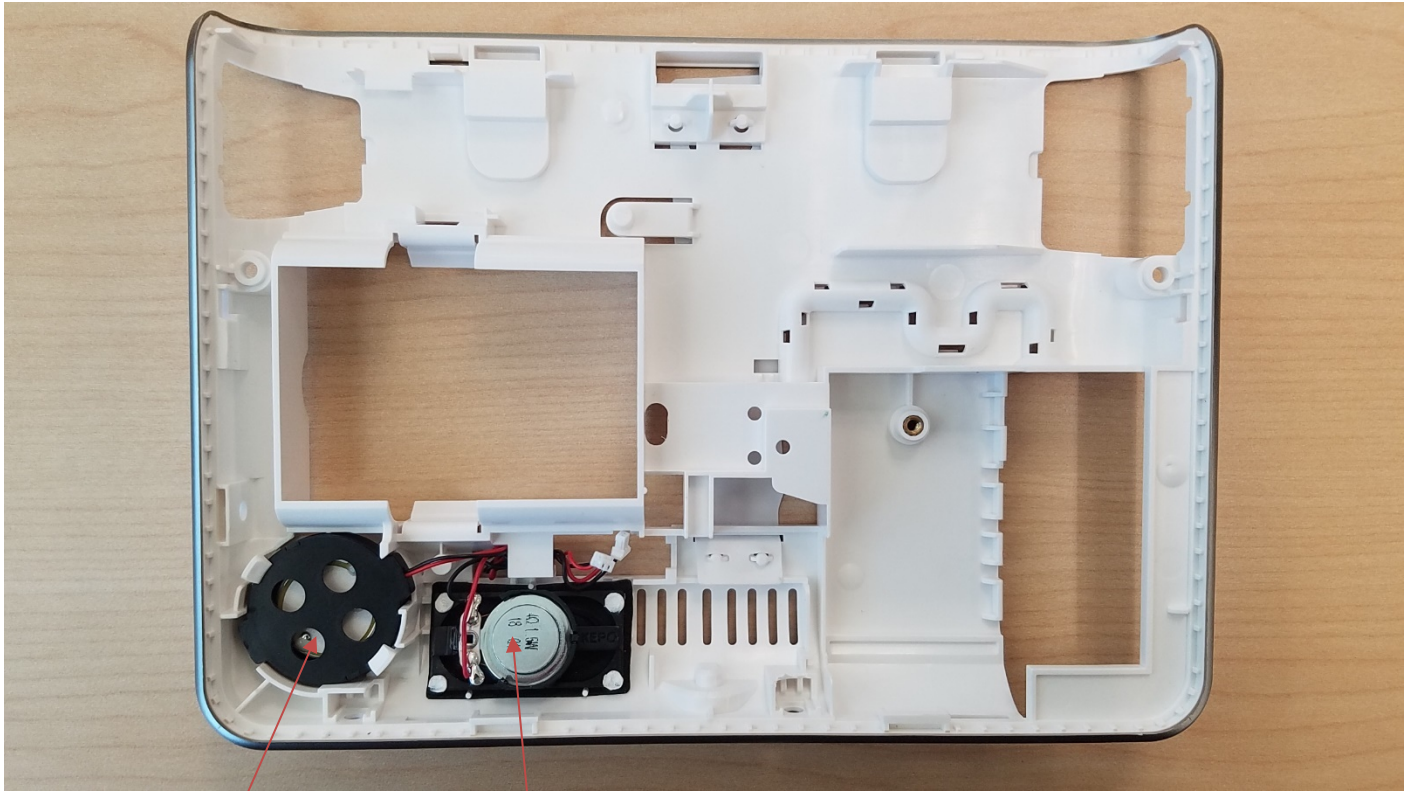


7" All-In-One (AIO) INTERNAL PHOTOS

ENCLOSURE INTERIOR



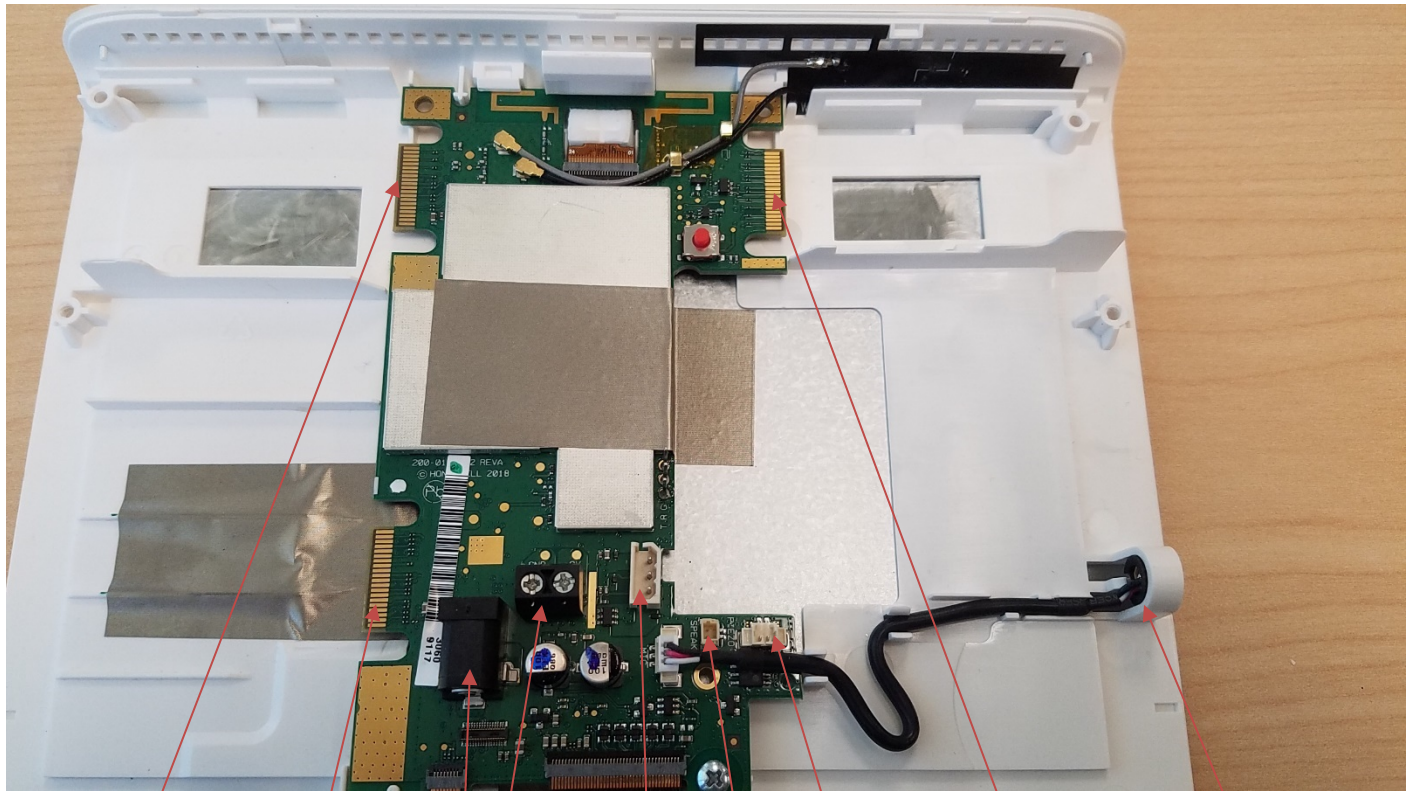
REAR ENCLOSURE - INTERIOR



SPEAKER

PIEZO

FRONT ENCLOSURE - INTERIOR



WiFi/Zwave
Expansion
Module Slot

Cellular Module
Expansion Slot

AC
Input

Battery
Connection

Speaker
Connection

Piezo
Connection

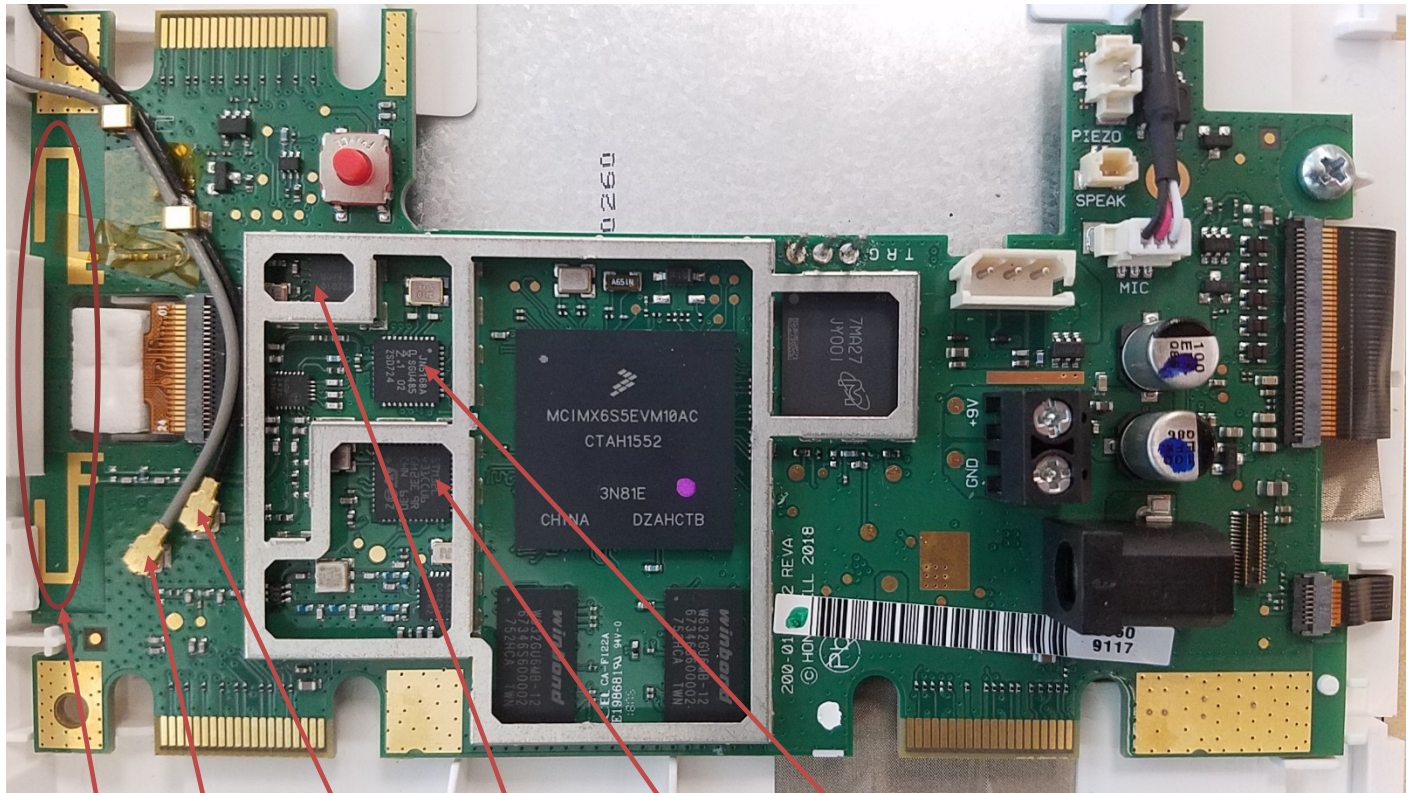
Expansion Slot
(For Future Use)

Microphone

MAIN PCB TOP – WITH SHIELD



MAIN PCB TOP – WITHOUT SHIELD



Bluetooth & Primary RF6 Antenna (Shared)

Secondary RF6 Antenna Connection

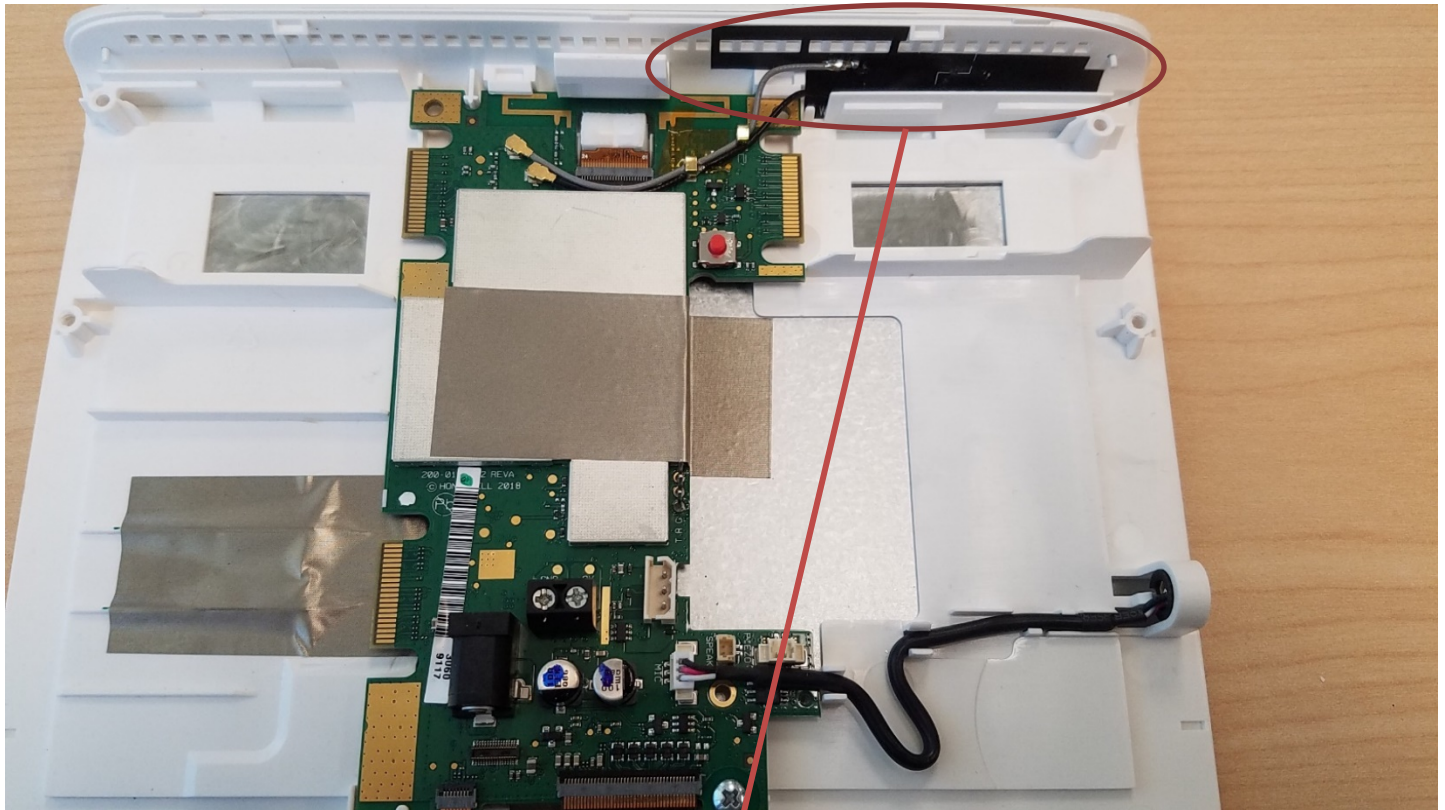
Bluetooth Radio Module

Wiselink Radio Module

RF6 Radio Module

Wiselink Antenna Connection

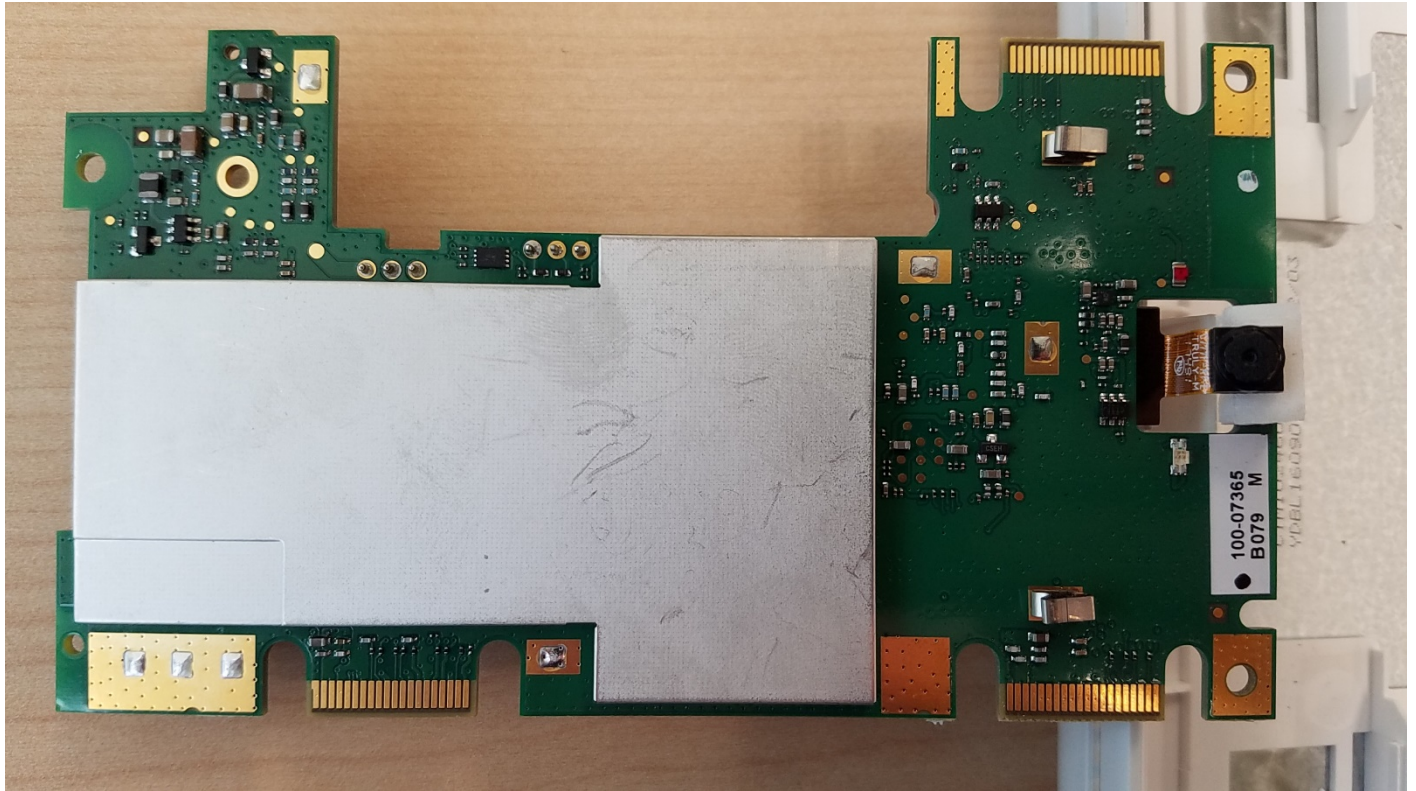
MAIN PCB TOP – WISELINK/RF6 (SECONDARY) ANTENNAS



Wiselink
Antenna

Secondary
RF6
Antenna

MAIN PCB BOTTOM – WITH SHIELD



MAIN PCB BOTTOM – WITHOUT SHIELD

