

APPENDIX I: DUT ANTENNA DIAGRAM & SAR TEST SETUP PHOTOGRAPHS

FCC ID: C3K-00002101	RF EXPOSURE PART 1 TEST REPORT	Approved by: Technical Manager
DUT Type: Wireless Module		APPENDIX I: Page 1 of 13

Note: Exact antenna dimensions and separation distances are shown in the Technical Descriptions in the FCC Filing.

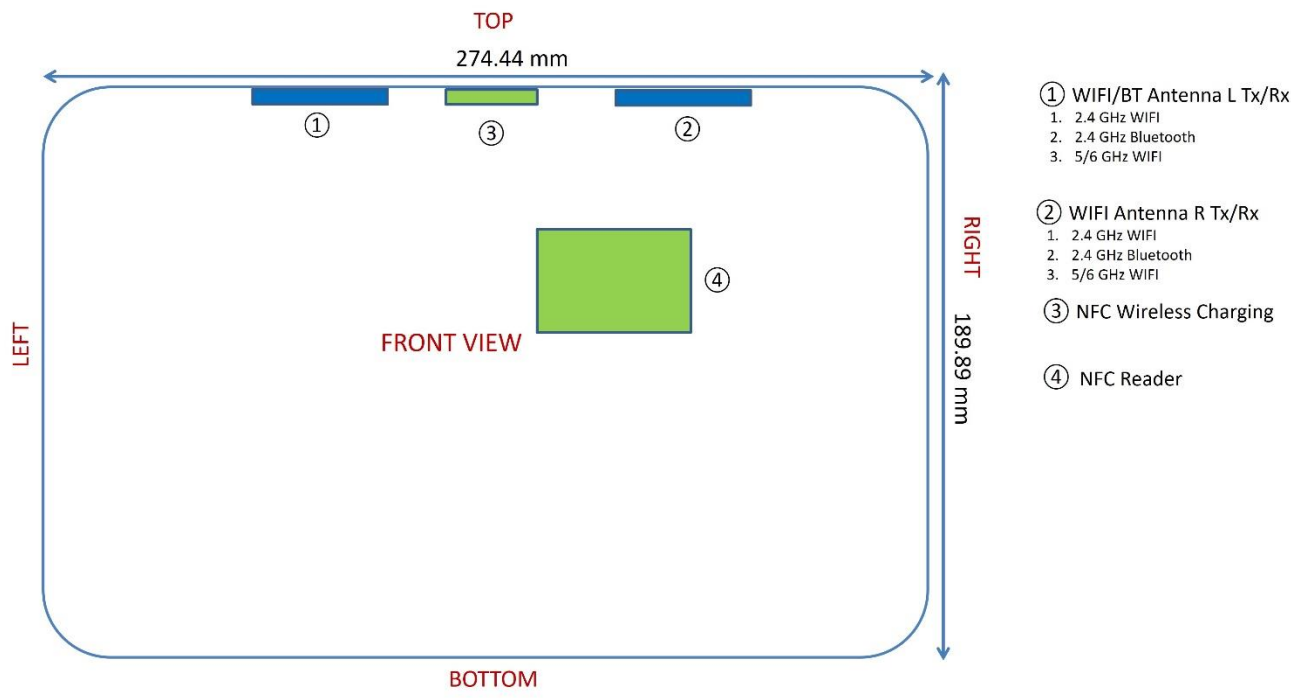
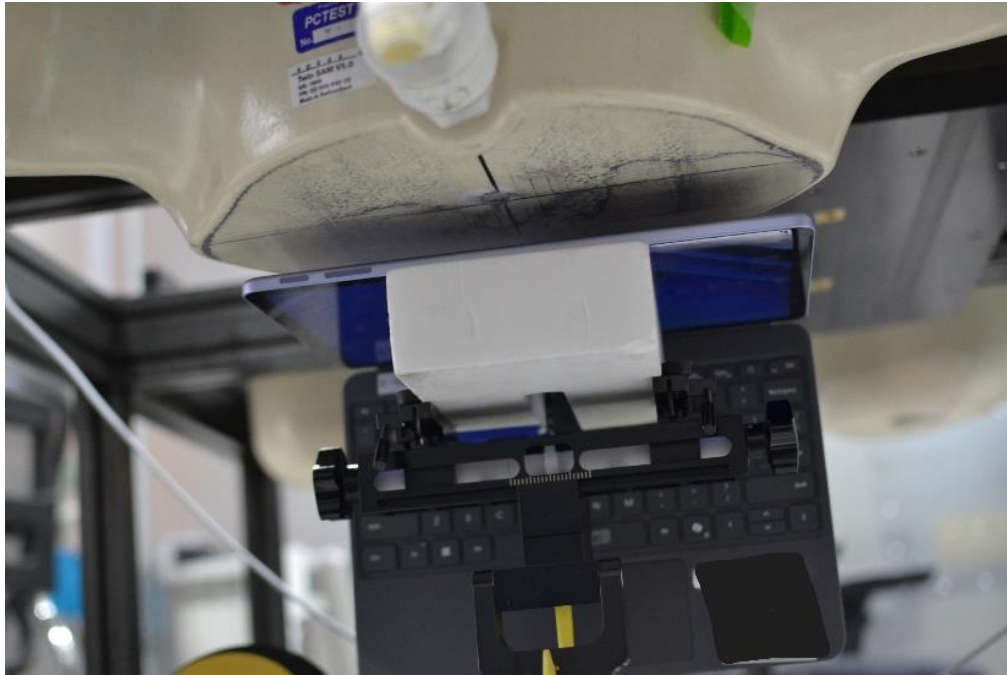
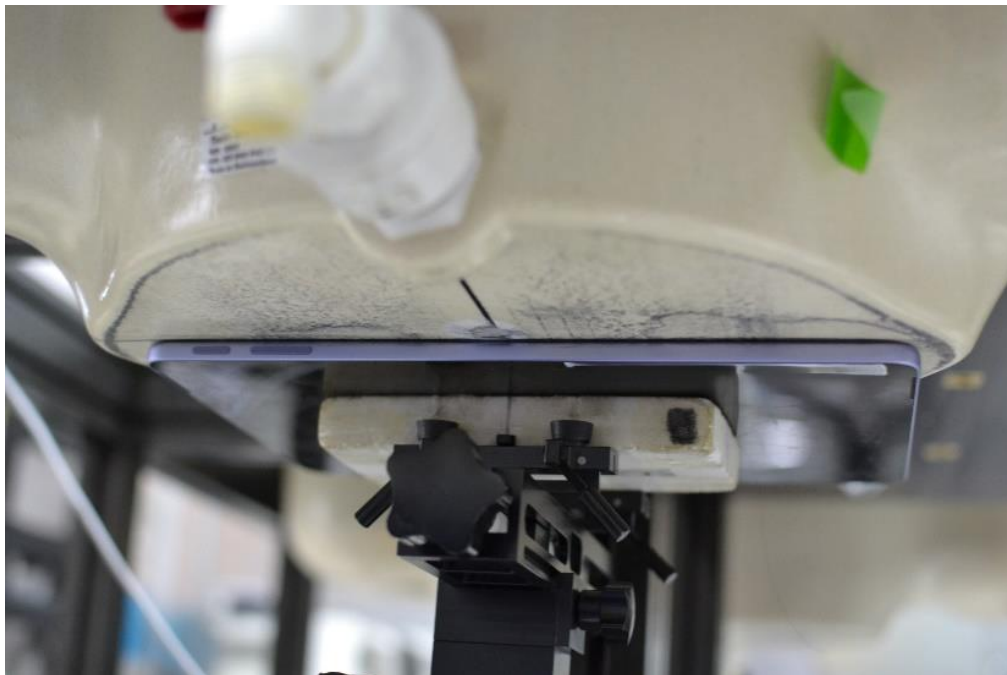


Figure I-1
DUT Antenna Locations

FCC ID: C3K-00002101	RF EXPOSURE PART 1 TEST REPORT	Approved by: Technical Manager
DUT Type: Wireless Module		APPENDIX I: Page 2 of 13

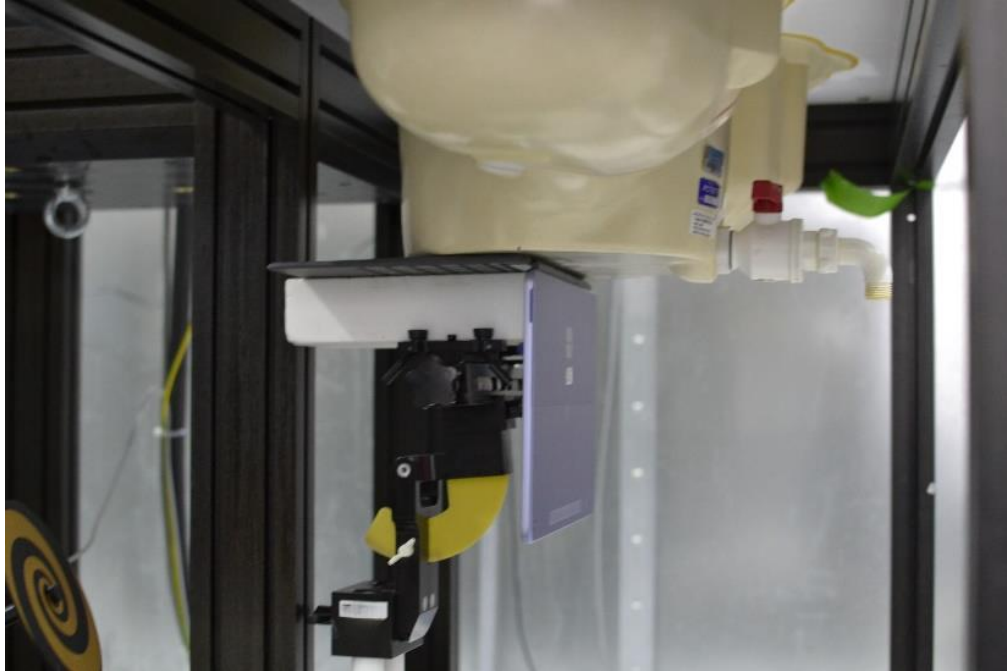


SAR Test Setup Photo 1 – Power Mode 1, Back Side at 25mm

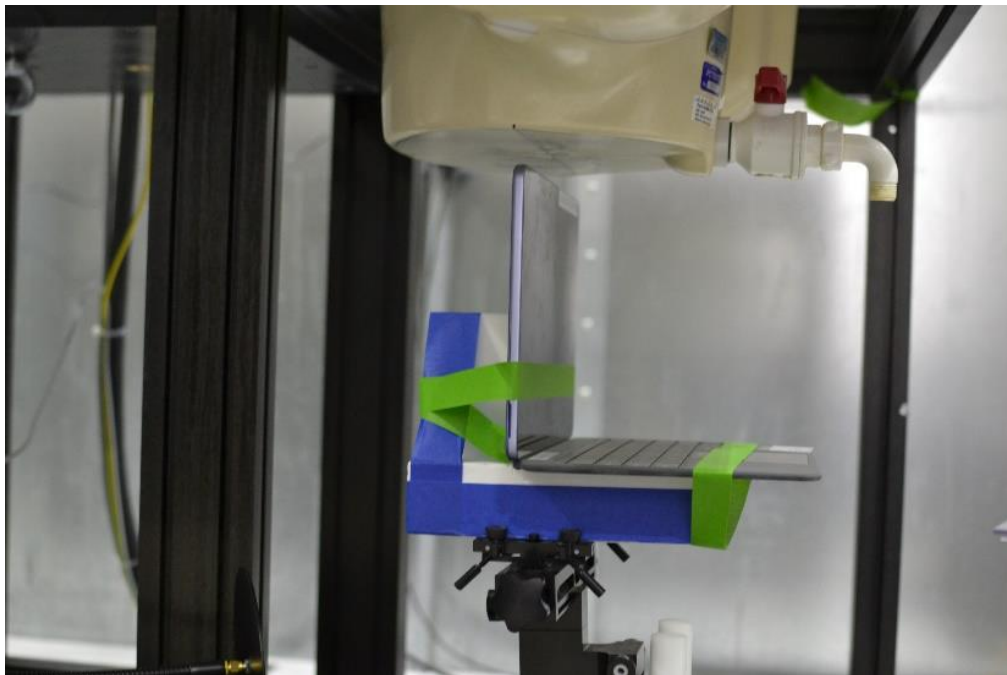


SAR Test Setup Photo 2 – Power Mode 2, Back Side at 0mm

FCC ID: C3K-00002101	RF EXPOSURE PART 1 TEST REPORT	Approved by: Technical Manager
DUT Type: Wireless Module		APPENDIX I: Page 3 of 13



SAR Test Setup Photo 3 – Power Mode 1, Bottom Edge at 0mm

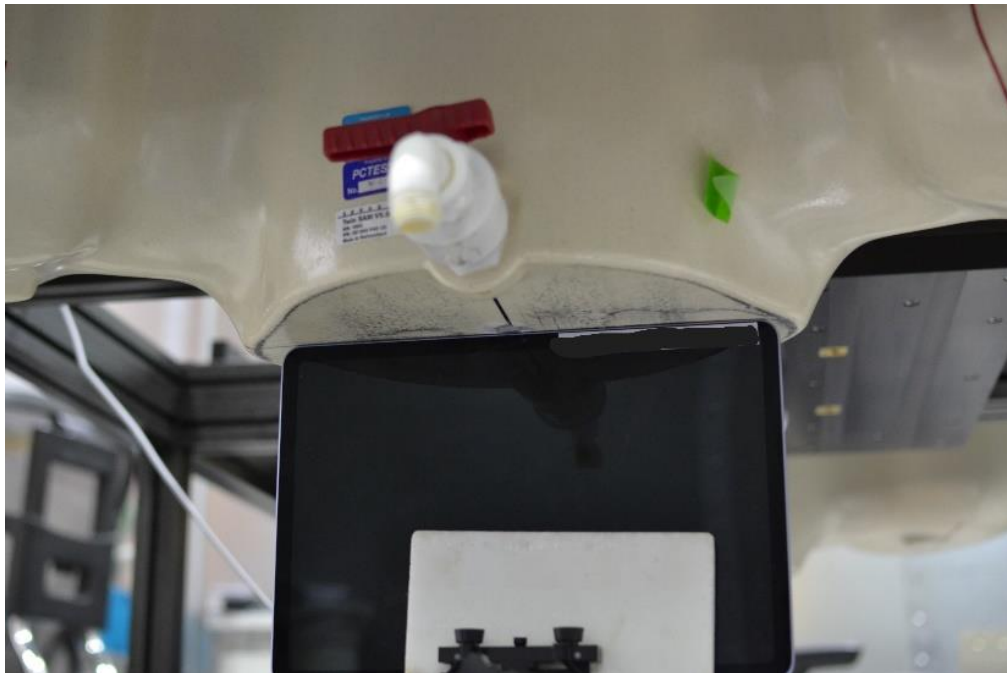


SAR Test Setup Photo 4 – Power Mode 1, Top Edge at 25mm

FCC ID: C3K-00002101	RF EXPOSURE PART 1 TEST REPORT	Approved by: Technical Manager
DUT Type: Wireless Module		APPENDIX I: Page 4 of 13



SAR Test Setup Photo 5 – Power Mode 2 with keyboard, Top Edge at 0mm



SAR Test Setup Photo 6 – Power Mode 2, Top Edge at 0mm

FCC ID: C3K-00002101	RF EXPOSURE PART 1 TEST REPORT	Approved by: Technical Manager
DUT Type: Wireless Module		APPENDIX I: Page 5 of 13



SAR Test Setup Photo 7 – Power Mode 1, Right Side at 0mm



SAR Test Setup Photo 8 – Power Mode 1, Right Side at 25mm

FCC ID: C3K-00002101	RF EXPOSURE PART 1 TEST REPORT	Approved by: Technical Manager
DUT Type: Wireless Module		APPENDIX I: Page 6 of 13



SAR Test Setup Photo 9 – Power Mode 1, Left Side at 0mm

FCC ID: C3K-00002101	RF EXPOSURE PART 1 TEST REPORT	Approved by: Technical Manager
DUT Type: Wireless Module		APPENDIX I: Page 7 of 13

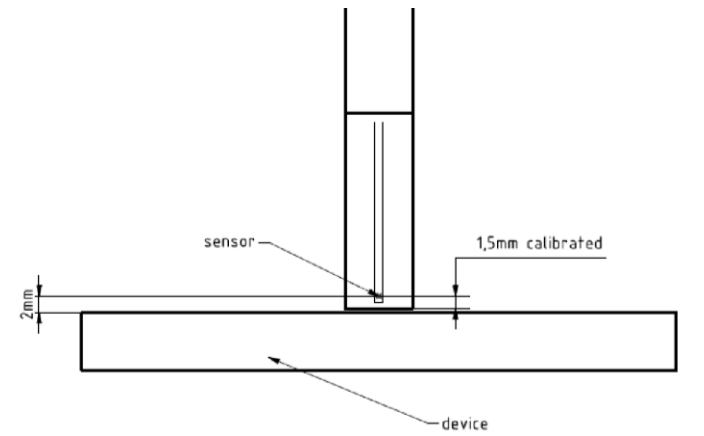
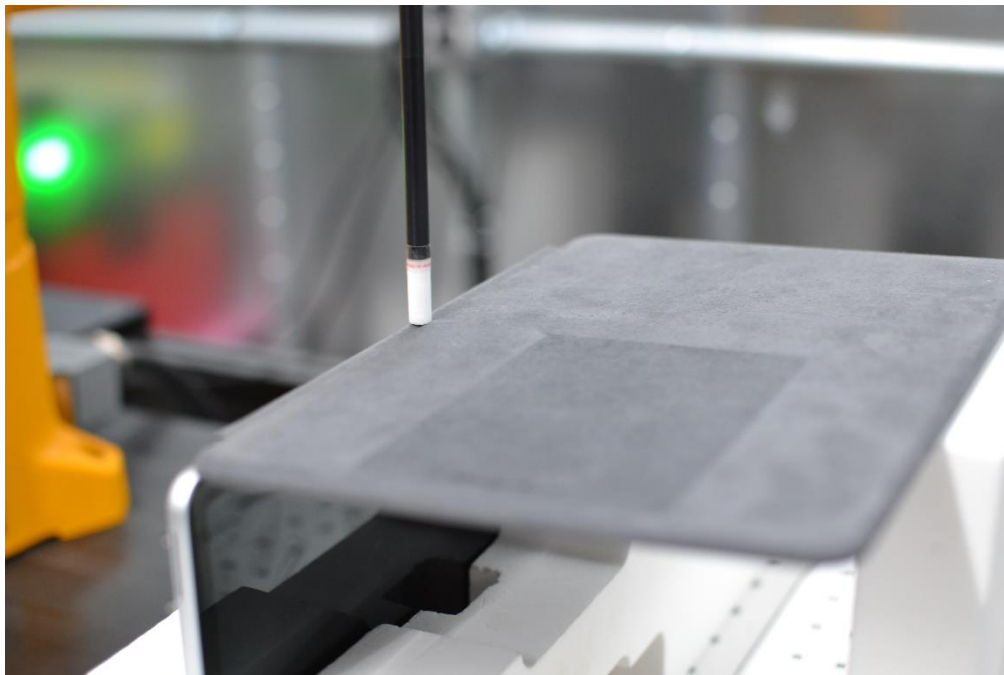


Figure I-2
EUmWVx Probe

Note: Distances below are distance from device surface to sensor-center. Therefore, distances include 1.5 mm for Probe Tip to Sensor Calibration Points.



PD Test Setup Photo 10 – Near Field Power Density Power Mode 1 Bottom Edge at 2 mm

FCC ID: C3K-00002101	RF EXPOSURE PART 1 TEST REPORT	Approved by: Technical Manager
DUT Type: Wireless Module		APPENDIX I: Page 8 of 13



PD Test Setup Photo 11– Near Field Power Density Power Mode 1 Top Edge at 25 mm

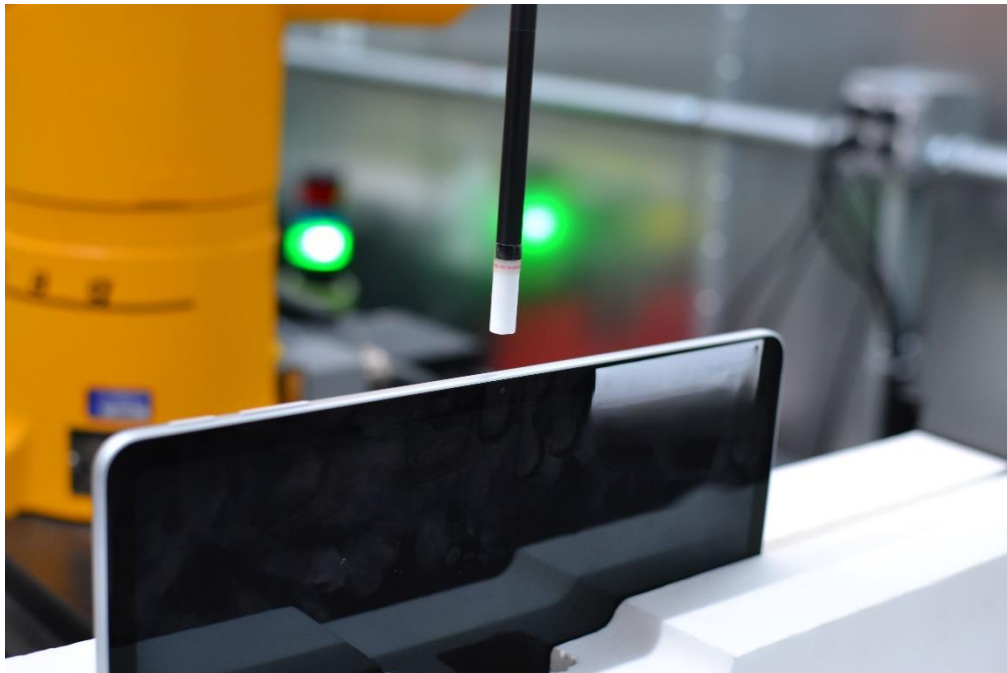


PD Test Setup Photo 12 – Near Field Power Density Power Mode 1 Back Side at 25 mm

FCC ID: C3K-00002101	RF EXPOSURE PART 1 TEST REPORT	Approved by: Technical Manager
DUT Type: Wireless Module		APPENDIX I: Page 9 of 13



PD Test Setup Photo 13– Near Field Power Density Power Mode 2 Top Edge at 2 mm



PD Test Setup Photo 14 – Near Field Power Density Power Mode 2 Top Edge at 9.57 mm

FCC ID: C3K-00002101	RF EXPOSURE PART 1 TEST REPORT	Approved by: Technical Manager
DUT Type: Wireless Module		APPENDIX I: Page 10 of 13



PD Test Setup Photo 15 – Near Field Power Density Power Mode 2 Back Side at 2 mm



PD Test Setup Photo 16– Near Field Power Density Power Mode 1 Right Edge at 25 mm

FCC ID: C3K-00002101	RF EXPOSURE PART 1 TEST REPORT	Approved by: Technical Manager
DUT Type: Wireless Module		APPENDIX I: Page 11 of 13



PD Test Setup Photo 17– Near Field Power Density Power Mode 1 Left Edge at 25 mm



PD Test Setup Photo 18– Near Field Power Density Power Mode 2 Right Edge at 0 mm

FCC ID: C3K-00002101	RF EXPOSURE PART 1 TEST REPORT	Approved by: Technical Manager
DUT Type: Wireless Module		APPENDIX I: Page 12 of 13



PD Test Setup Photo 19– Near Field Power Density Power Mode 2 Left Edge at 0 mm

FCC ID: C3K-00002101	RF EXPOSURE PART 1 TEST REPORT	Approved by: Technical Manager
DUT Type: Wireless Module		APPENDIX I: Page 13 of 13