

Model: 1414 (Phoenix)
Antenna Measurements and Info



Distance to board edge

Distance to board edge

.129in/3.282mm

Ant. B, 1.9GHz.

Distance to board edge

Distance to user measurements

Bottom view

1.072in/27.222mm

1.121in/28.470mm

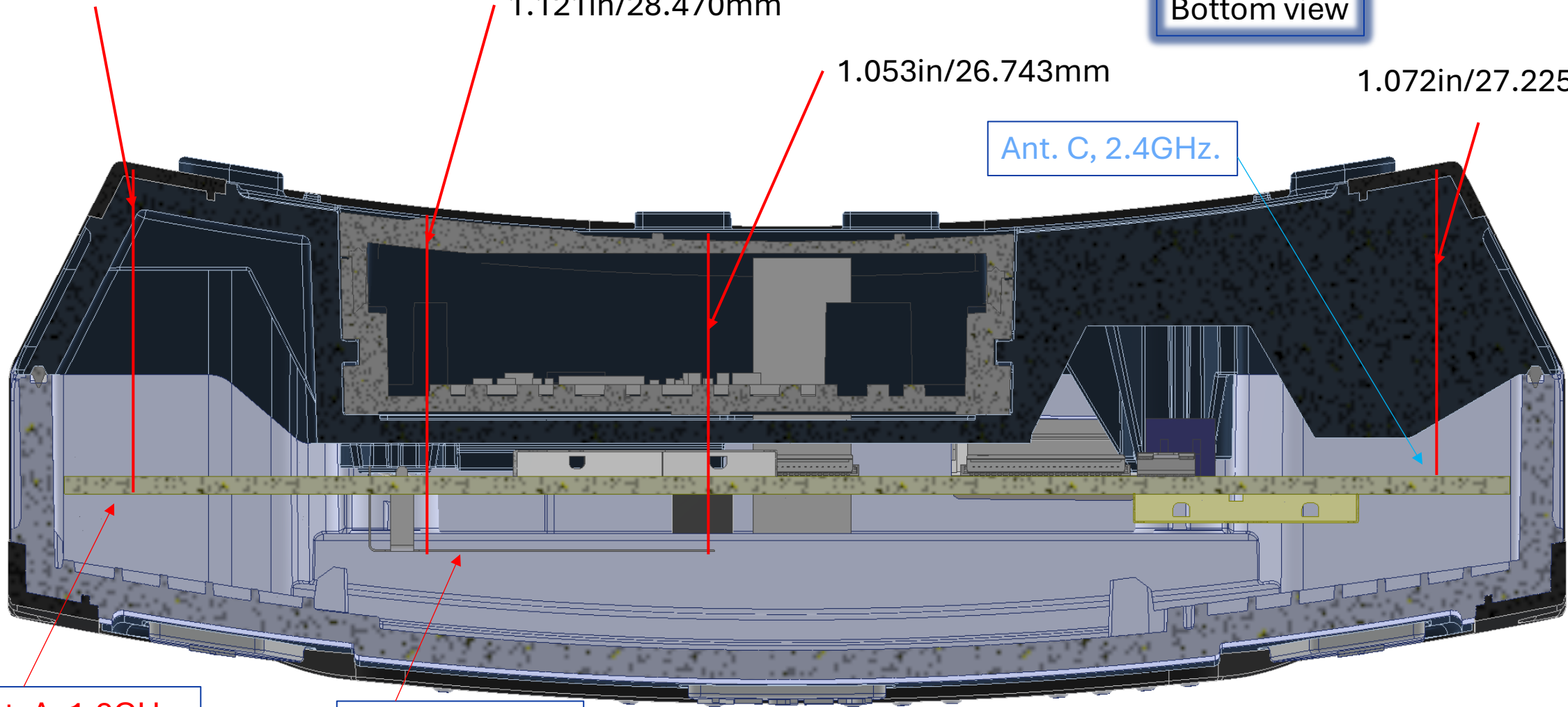
1.053in/26.743mm

1.072in/27.225mm

Ant. C, 2.4GHz.

Ant. A, 1.9GHz.

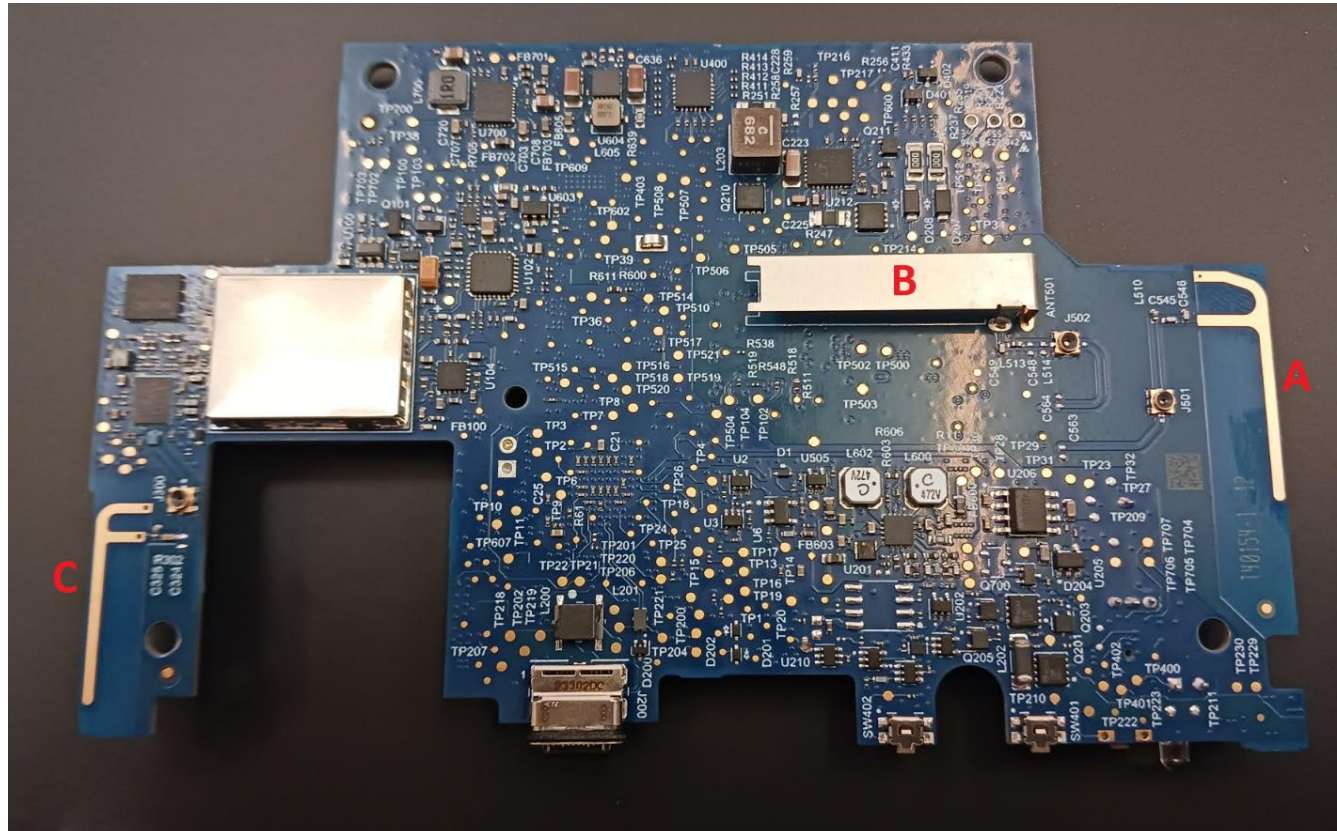
Ant. B, 1.9GHz.



The Phoenix Beltpack has three antennas, identified by A, B, C on the photo below.

- A. PCB/Printed Inverted-F quarter wave antenna for UPCS 1920-1930MHz.
- B. Plated Inverted-F, soldered onto PCB for UPCS 1920-1930MHz.
- C. PCB/Printed Inverted-F quarter wave antenna for Bluetooth 2400-2483.5MHz.

Frontside view



Antenna gain for the three antennas are as follows:

- A. 2.2dBi
- B. 2.35dBi
- C. 1.5dBi