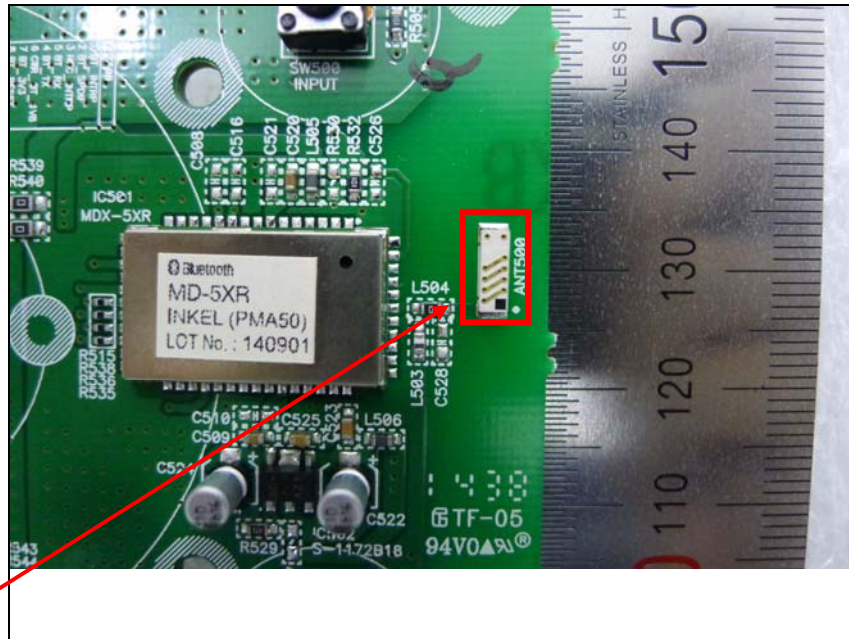


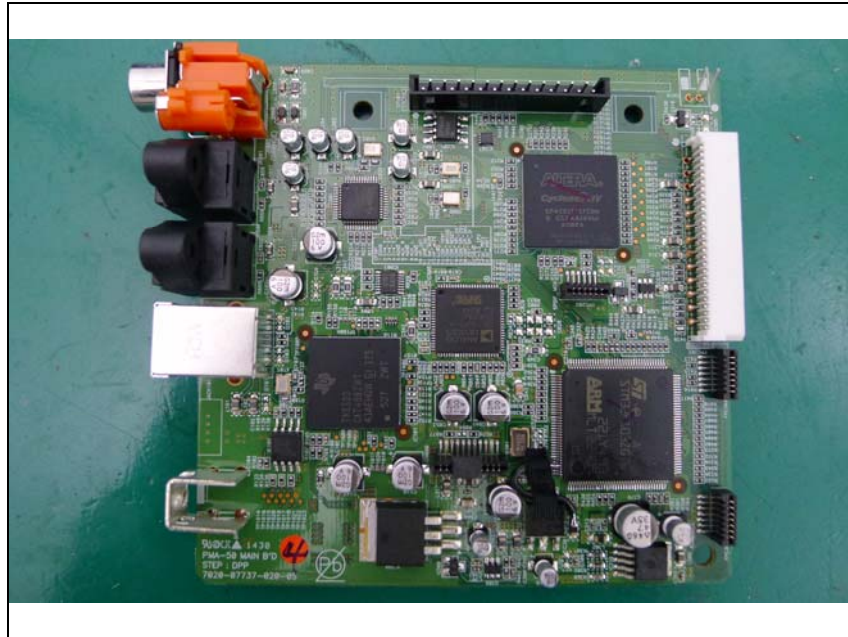
Internal photos of EUT

Antenna view of EUT



Chip Antenna

Top view of Main PCB



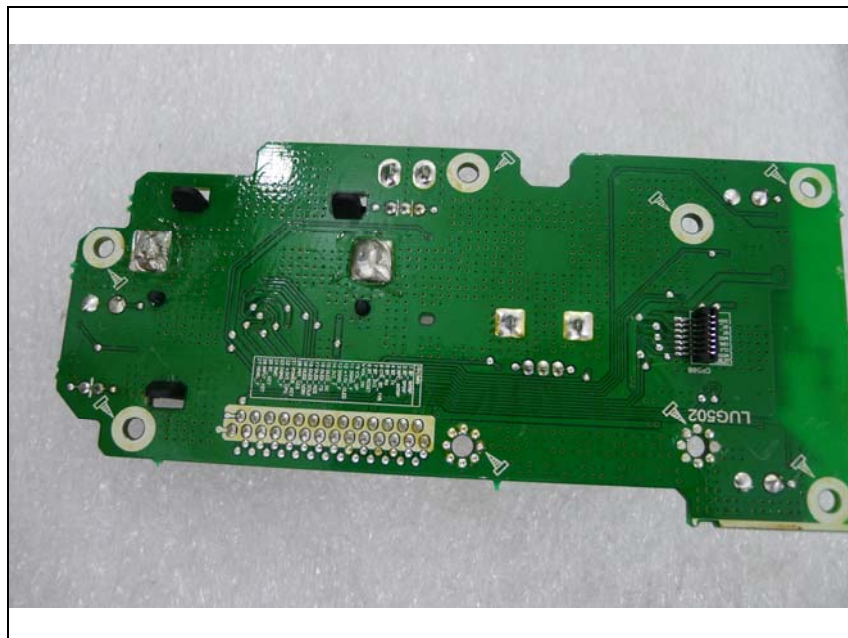
Bottom view of Main PCB



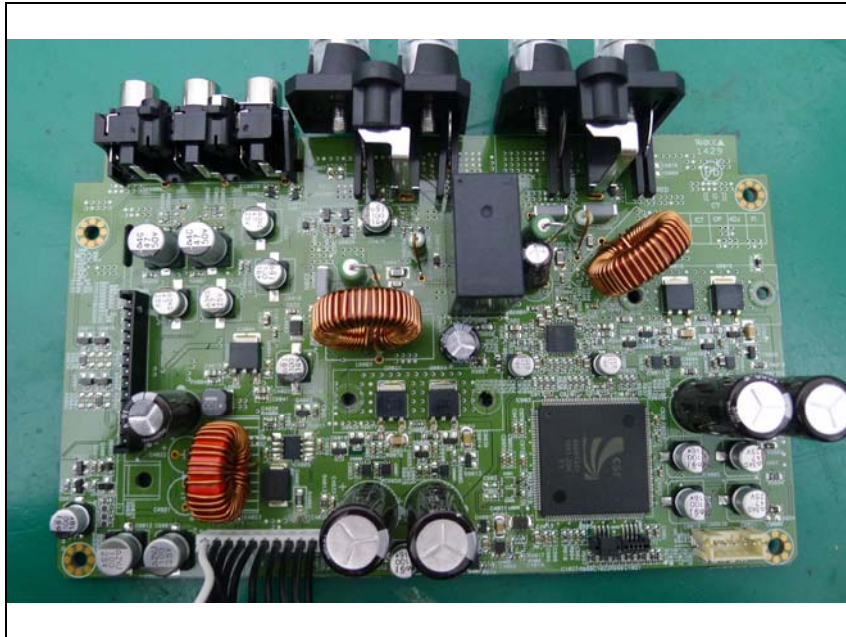
Top view of Front PCB



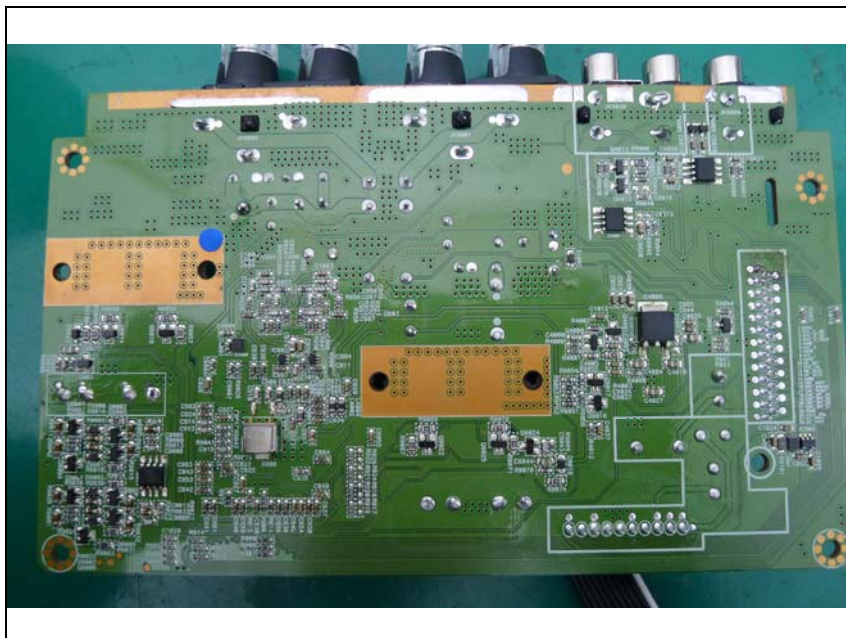
Bottom view of Front PCB



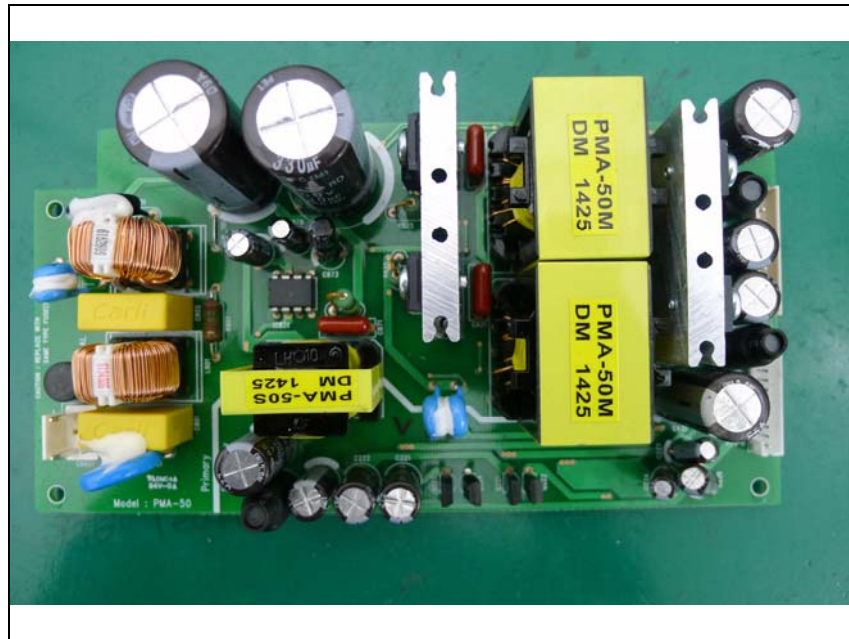
Top view of Interface PCB



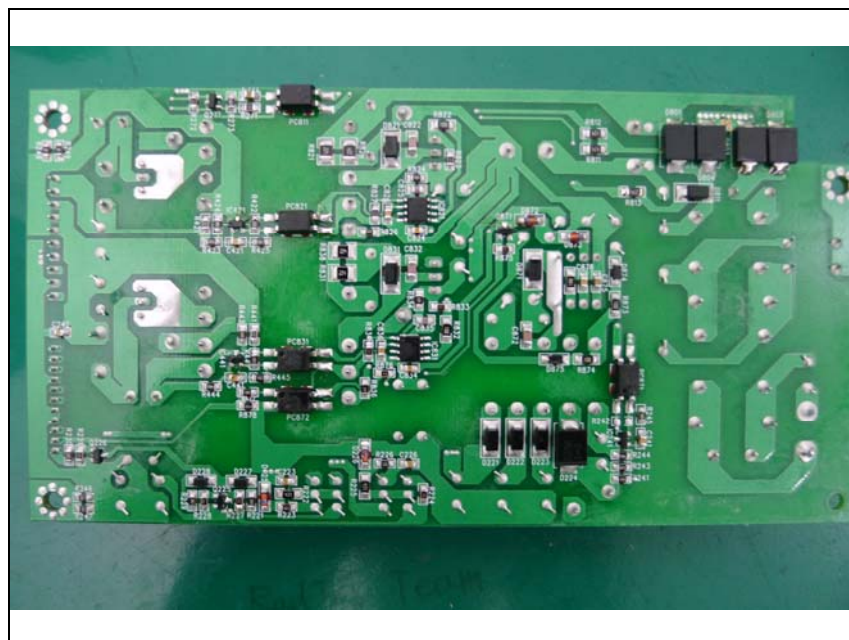
Bottom view of Interface PCB



Top view of Power PCB



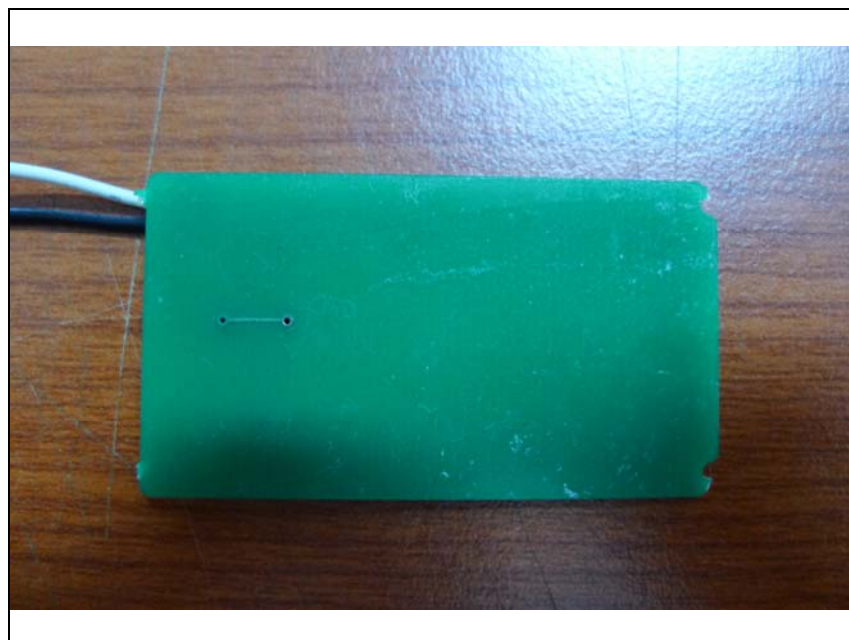
Bottom view of Power PCB



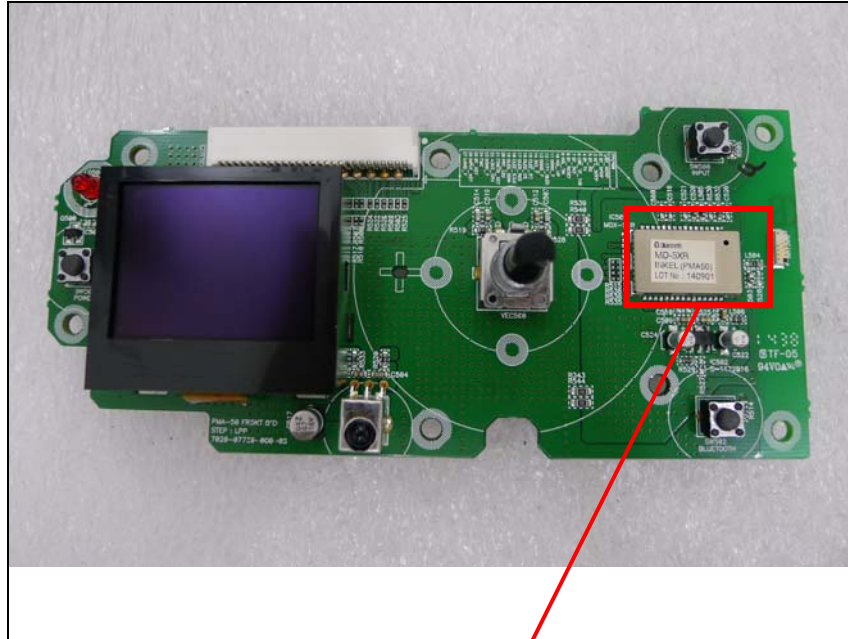
Top view of NFC TAG



Bottom view of NFC TAG



Top view of Front PCB (Shield can on Bluetooth module)



Remove Shield can (Bluetooth module)

