

Ranger CZF series Transmitter FCC Certification Application

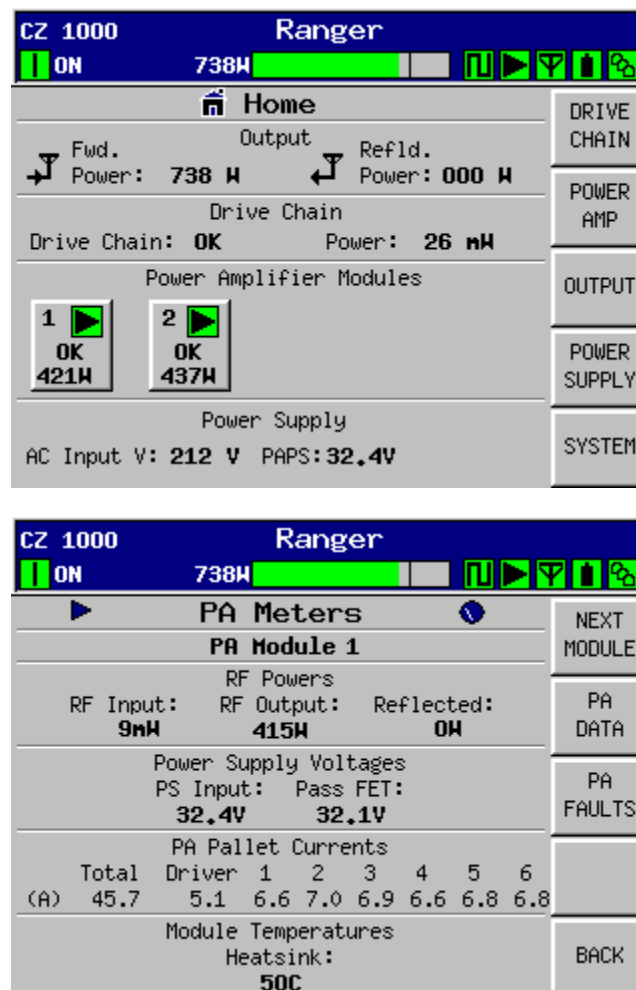
Application for Equipment Certification

EXHIBIT J DC Voltages and Currents of Final Amplifier

2.1033 (c) (8) Final amplifier DC voltages & currents

The dc voltages applied to and dc currents into the several elements of the final radio frequency amplifying device for normal operation over the power range.

The CZ725F transmitter uses two solid state power amplifiers. The operating RF output power per amplifier is 375W. The voltages and currents for one PA module the CZ725F are shown below.



A display screen from the transmitter has been captured to show the required data. The supply voltage and the currents of all 7 module pallets are shown.

From this data, it may be seen that the supply voltage of this PA module is 32.4V.

The total PA current for this module is the sum of the pallet currents, 45.7 A.