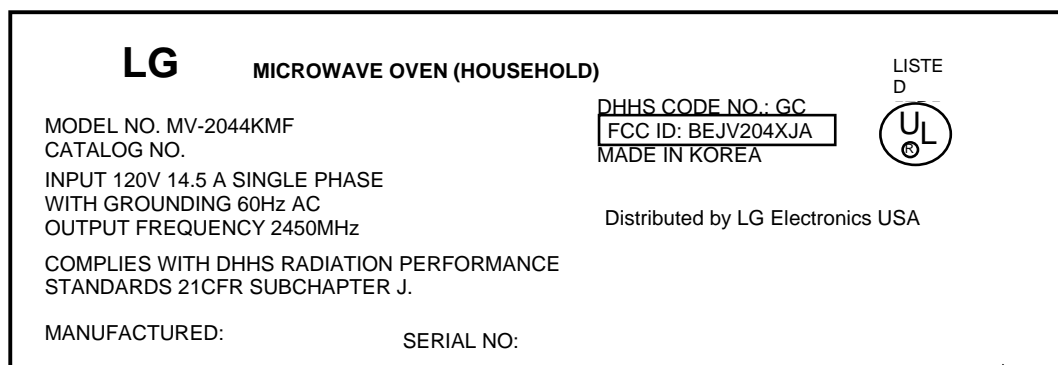


APPENDIX B. Labeling Requirements

Labeling requirements per Section 2.925 and 15.19.

The label shown shall be permanently affixed at a conspicuous location on the device and be readily visible to the user at the time purchase.



<Fig. 1. Sample Label of Nameplate>

* Alternate location:
The nameplate may be
alternatively affixed on
the left side of control
panel or internal surface
of oven cavity or rear
surface of oven.



< Fig. 2. Photo of the physical location of the label>