

SAR TEST REPORT

Specific Absorption Rate

Date of Issue : July 22, 2008

Test Report No : MCCL-3-08-086

Equipment Under Test (EUT) : **Cellular/ PCS GSM Phone**

Model Name(s) : **KC550d**

Manufacturer : **LG Electronics, Inc.**

Applicant : **LG Electronics, Inc.**

Application Type : **Certification**

FCC Rule Part(s) : **§ 2.1093; FCC/OET Bulletin 65 Supplement C [July 2001]**

FCC Classification : **Licensed Transmitter Held to Ear (PCE)**

Test Result : **PASS**

SUMMARY

This wireless portable device has been shown to be capable of compliance for localized specific absorption rate (SAR) for uncontrolled environment/general population exposure limits specified in European standard EN50360 : 2001 and had been tested in accordance with the measurement procedures specified in European standard EN50361:2001, IEEE 1528 – Dec. 2003, FCC/OET bulletin 65 Supplement C(2001) , Public notice 02-1438(2002), ANSI IEEE standard C95.1(2005) and C95.3(2002)

※ The test results in this test report apply only to sample(s) tested.



Issued under the authority of
E. S. Park / Technical Manager
MCCL



Reviewed by
S. K. Yoon /Vice Technical Manager
MCCL



Prepared by
C. H. Jeong / Test Engineer
MCCL

TABLE OF CONTENTS

1. TEST RESULT SUMMARY	3
2. DESCRIPTION OF THE DEVICE UNDER TEST.....	4
2.1 Antenna Description.....	4
2.2 Device Description.....	4
3. INTRODUCTION.....	5
4. SAR MEASUREMENT SYSTEM	6
4.1 SAR Measurement Setup.....	6
4.2 DASY4 E-Field Probe System.....	7
4.3 Phantom.....	9
4.4 Simulating Mixture Characterization.....	10
4.5 Device Holder for Transmitters.....	11
4.6 Validation Dipole	11
5. SAR MEASUREMENT PROCEDURE.....	12
6. DEFINITION OF REFERENCE POINT.....	13
6.1 EAR Reference Point.....	13
6.2 Handset Reference Points.....	14
7. TEST CONFIGURATION POSITIONS.....	15
7.1 Positioning for Cheek/Touch.....	15
7.2 Positioning for Ear / 15° Tilt.....	16
7.3 Body Holster /Belt Clip Configuration.....	17
8. MEASUREMENT UNCERTAINTY.....	18
9. EN50360 RF EXPOSURE LIMITS.....	19
10. SYSTEM VERIFICATION.....	20
11. SAR Evaluation Considerations for Handsets with Multiple Transmitters and Antennas	22
12. MEASUREMENT RESULTS	23
13. TEST EQUIPMENT.....	27
14. REFERENCES.....	28
APPENDIX A: Validation Test Data.....	29
APPENDIX B: SAR Test Data.....	33
APPENDIX C: Calibration Certificates.....	62

1. TEST RESULT SUMMARY

Model Name(s) : KC550d
 Date of Test : July 21 ~ 22, 2008
 Date of Issue : July 22, 2008
 Address of Test Site : 60-39, Kasan-Dong, Kumchon-Gu, Seoul 153-801, Korea.
 Responsible Test Engineer : Eui-Soon Park
 Test Engineer : Chan-ho Jeong
 EUT Type : Cellular/ PCS GSM Phone
 Tx Frequency : 824.20 ~ 848.80 MHz (GSM850)
 1850.20 ~ 1909.80 MHz (PCS1900)

 Rx Frequency : 869.20 ~ 893.80 MHz (GSM850)
 1930.20 ~ 1989.80 MHz (PCS1900)
 Transmit Output Power : GSM850: 33.0 dBm
 GSM1900: 30.0 dBm

Maximum Results Found During SAR Evaluation

1. Head Configuration

ANSI / IEEE C95.1(2005) - SAFETY LIMIT Spatial Peak Uncontrolled Exposure/General Population						1.6 W/kg averaged over 1 gram			
Frequency		Mod.	Conducted Power (dBm)		Battery	Device Test Position	Antenna Position	Slider Position	SAR (W/kg)
MHz	Ch.		Start	End					
1880.00	661	PCS 1900	29.03	28.98	Standard	Right Tilt	Fixed	Down	0.382

2. Body Worn Configuration

ANSI / IEEE C95.1(2005) - SAFETY LIMIT Spatial Peak Uncontrolled Exposure/General Population						1.6 W/kg averaged over 1 gram			
Frequency		Mod.	Conducted Power (dBm)		Battery	Device Test Position	Antenna Position	Slider Position	SAR (W/kg)
MHz	Ch.		Start	End					
1880.00	661	GPRS 1900	27.75	27.74	Standard	2.0 [Rear]	Fixed	Down	0.393

3. Measurement Uncertainty

Combine Standard Uncertainty	9.6 (k=1)
Extended Standard Uncertainty	19.2 (k=2, 95% CONFIDENCE LEVEL)

2. DESCRIPTION OF THE DEVICE UNDER TEST

The FCC rules for evaluating portable devices for RF exposure compliance are contained in 47 CFR §2.1093. For purposes of RF exposure evaluation, a portable device is defined as a transmitting device designed to be used with any part of its radiating structure in direct contact with the user's body or within 1.5 centimeters of the body of a user or bystanders under normal operating conditions. This category of devices would include hand-held cellular and PCS telephones that incorporate the radiating antenna into the hand-piece and wireless transmitters that are carried next to the body. Portable devices are evaluated with respect to SAR limits for RF exposure. The applicable SAR limit for portable transmitters used by consumers is 1.6 watts/kg, which is averaged over any one gram of tissue defined as a tissue volume in the shape of a cube.

2.1 Antenna Description

Type :	Fixed
Location :	The inside of the device
Configuration :	Intenna Type Antenna

2.2 Device Description

Manufacturer :	LG Electronics, Inc.
FCC ID :	BEJKC550D
Trade Name :	LG
Model Name :	KC550d
Serial No :	#1
EUT Type :	Cellular/ PCS GSM Phone
Mode(s) of Operation :	GSM 850 / PCS 1900
Transmit Output Power :	GSM 850 : Level 5 (33.0 dBm) PCS 1900 :Level 0 (30.0 dBm)
Mode(s) of Operation :	GSM / GPRS
Modulation Mode(s) :	GSM
Duty Cycle :	8.3 / 2.075 (GSM / GPRS)
Transmitting Frequency Range :	824.20 ~ 848.80 MHz (GSM850) 1850.20 ~ 1909.80 MHz (GSM1900)
Battery Type :	Standard

3. INTRODUCTION

The FCC has adopted the guidelines for evaluating the environmental effects of radio frequency radiation in ET Docket 93-62 on Aug. 6, 1996 to protect the public and workers from the potential hazards of RF emissions due to FCC-regulated portable device.[1]

The safety limits used for the environmental evaluation measurements are based on the criteria published by the American National Standards Institute (ANSI) For localized specific absorption rate (SAR) in IEEE/ANSI C95.1-2005 Standard for safety Levels with Respect to Human Exposure to Radio Frequency Electronic Fields, 3 kHz to 300 GHz. (c) 1992 by the institute of Electrical and Electronics Engineers, Inc., New York, New York 10017.[2] The measurement procedure described in IEEE/ANSI C95.3-2005 Recommended Practice for the Measurement of Potentially Hazardous Electromagnetic Fields – RF and Microwave[3] is used for guidance in measuring SAR due to the RF radiation exposure from the Equipment Under Test (EUT). These criteria for SAR evaluation are similar to those recommended by the National Council on Radiation Protection and Measurements (ICNIRP) in Biological Effects and Exposure Criteria for Radio Frequency Electromagnetic Fields,” ICNIRP Report No. 86 (c) ICNIRP, 1986, Bethesda, MD20814.[6] SAR is a measure of the rate of energy absorption due to exposure to an RF transmitting source. SAR values have been related to threshold levels for potential biological hazards.

SAR Definition

Specific Absorption Rate (SAR) is defined as the time derivative (rate) of the incremental energy (dU) absorbed by (dissipated in) an incremental mass (dm) contained in a volume element (dV) of a given density (ρ). it is also defined as the rate of rf energy absorption per unit mass at a point in an absorbing body. (see Fig. 2.1.)

$$SAR = \frac{d}{dt} \left(\frac{dU}{dm} \right) = \frac{d}{dt} \left(\frac{dU}{\rho dV} \right)$$

Figure 2.1 SAR Mathematical Equation

SAR is expressed in units of Watts per Kilogram (W/kg).

$$SAR = \sigma E^2 / \rho$$

Where:

- σ = conductivity of the tissue-simulant material (S/m)
- ρ = mass density of the tissue-simulant material (kg/m^3)
- E = Total RMS electric field strength (V/m)

NOTE: The primary factors that control rate of energy absorption were found to be the wavelength of the incident field in relations to the dimensions and geometry of the irradiated organism, the orientation of the organism in relation to the polarity of field vectors, the presence of reflecting surfaces, and whether conductive contact is made by the organism with a ground plane.[6]

System Electronics

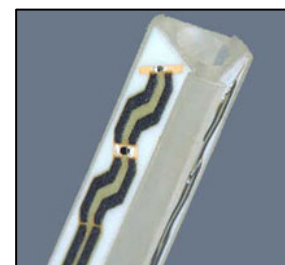
The DAE consists of a highly sensitive electrometer-grade preamplifier with auto-zeroing, a channel and gain-switching multiplexer, a fast 16 bit AD-converter and a command decoder and control logic unit. Transmission to the PC-card is accomplished through an optical Downlink for data and status information and an optical uplink for commands and clock lines. The mechanical probe mounting device includes two different sensor systems for frontal and sidewise probe contacts. They are also used for mechanical surface detection and probe collision detection. The robot uses its own controller with a built in VME-bus computer. The system is described in detail in [7].

4.2 DASY4 E-Field Probe System

The SAR measurements were conducted with the dosimetric probe ET3DV6, designed in the classical triangular configuration [7] (see Fig. 4.2) and optimized for dosimetric evaluation. The probe is constructed using the thick film technique; with printed resistive lines on ceramic substrates. The probe is equipped with an optical multifiber line ending at the front of the probe tip. It is connected to the EOC box in the robot arm and provides an automatic detection transmitter, the other half to a synchronized receiver. As the probe approach the surface, the reflection from the surface produces a coupling from the transmitting to the receiving fibers. This reflection increases first during the approach, reaches coupling is zero. The distance of the coupling maximum to the surface is probe angle. The DASY4 software reads the reflection during a software approach and looks for the maximum using a 2nd order fitting. The approach is stopped at reaching the maximum.

Probe Specifications

Construction:	Symmetrical design with triangular core Built-in optical fiber for surface detection system Built-in shielding against static charges PEEK enclosure material (resistant to organic solvents, e.g., DGBE)
Calibration:	Basic Broad Band Calibration: in air: 10-3000 MHz Conversion Factors (CF) for HSL 900 and HSL 1800 Additional CF for other liquids and frequencies upon request
Frequency:	10 MHz to 3 GHz; Linearity: ± 0.2 dB (30 MHz to 3 GHz)
Directivity:	± 0.2 dB in HSL (rotation around probe axis) ± 0.4 dB in HSL (rotation normal to probe axis)
Dynamic Range:	5 μ W/g to > 100 mW/g; Linearity: ± 0.2 dB
Optical Surface	± 0.2 mm repeatability in air and clear liquids over
Detection:	diffuse reflecting surfaces
Dimensions:	Overall length: 330 mm (Tip: 16 mm) Tip diameter: 6.8 mm (Body: 12 mm) Distance from probe tip to dipole centers: 2.7 mm
Application:	General dosimetric measurements up to 2.5GHz Compliance tests of mobile phones Fast automatic scanning in arbitrary phantoms



*Figure 4.2 Isotropic
E-Field Probe*

Probe Calibration Process

Dosimetric Assessment Procedure

Each probe is calibrated according to a dosimetric assessment procedure described in [8] with accuracy better than +/- 10%. The spherical isotropy was evaluated with the procedure described in [9] and found to be better than +/-0.25dB. The sensitivity parameters (NormX, NormY, NormZ), the diode compression parameter (DCP) and the conversion factor (ConvF) of the probe is tested.

Free Space Assessment

The free space E-field from amplified probe outputs is determined in a test chamber. This is performed in a TEM cell for frequencies below 1 GHz (see Fig. 4.3), and in a waveguide above 1 GHz for free space. For the free space calibration, the probe is placed in the volumetric center of the cavity at the proper orientation with the field. The probe is then rotated 360 degrees.

Temperature Assessment *

E-field temperature correlation calibration is performed in a flat phantom filled with the appropriate simulated brain tissue. The measured free space E-field in the medium correlates to temperature rise in a dielectric medium. For temperature correlation calibration a RF transparent thermistor-based temperature probe is used in conjunction with the E-field probe. (see Fig. 4.4)

$$SAR = C \frac{\Delta T}{\Delta t}$$

Where:

Δt = exposure time (30 seconds),

C = heat capacity of tissue (brain or muscle),

ΔT = temperature increase due to RF exposure.

SAR is proportional to $\Delta T/\Delta t$, the initial rate of tissue heating, before thermal diffusion takes place.

Now it's possible to quantify the electric field in the simulated tissue by equating the thermally derived SAR to the E- field;

$$SAR = \frac{|E|^2 \sigma}{\rho}$$

Where:

σ = simulated tissue conductivity,

ρ = Tissue density (1.25 g/cm³ for brain tissue)

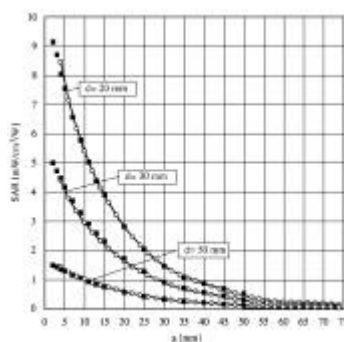


Figure 4.3 E-Field and Temperature measurements at 900MHz [7]

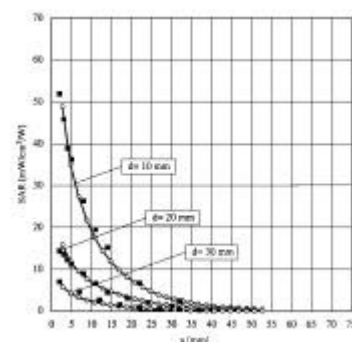


Figure 4.4 E-Field and Temperature measurements at 1.9GHz [7]

4.3 Phantom

The SAM Twin Phantom V4.0 is constructed of the fiberglass shell integrated in a wooden table. The shape of the shell is based on data from an anatomical study designed to determine the maximum exposure in at least 90% of all users [11][12]. It enables the dosimetric evaluation of left and right hand phone usage as well as body mounted usage at the flat phantom region. A cover prevents the evaporation of the liquid. Reference markings on the phantom allow the complete setup of all predefined phantom positions and measurement grids by manually teaching three points in the robot. (see Fig. 4.5)



Figure 4.5 SAM Twin Phantom

Phantom Specification

Construction:	The shell corresponds to the specifications of the Specific Anthropomorphic Mannequin (SAM) phantom defined in IEEE 1528-200X, CENELEC 50361 and IEC 62209. It enables the dosimetric evaluation of left and right hand phone usage as well as body mounted usage at the flat phantom region. A cover prevents evaporation of the liquid. Reference markings on the phantom allow the complete setup of all predefined phantom positions and measurement grids by teaching three points with the robot.
Shell Thickness:	2 ± 0.2 mm; Center ear point: 6 ± 0.2 mm
Filling:	Volume Approx. 25 liters
Dimensions:	Height: adjustable feet; Length: 1000 mm; Width: 500 mm

4.4 Brain & Muscle Simulating Mixture Characterization

The brain and muscle mixtures consist of a viscous gel using hydroxethylcellulose(HEC) gelling agent and saline solution (see Table 4.1). Preservation with a bacteriacide is added and visual inspection is made to make sure air bubbles are not trapped during the mixing process. The mixture is calibrated to obtain proper dielectric constant (permittivity) and conductivity of the desired tissue. The head tissue dielectric parameters recommended by the IEEE SCC-34/SC-2 have been specified in P1528 are derived from the issue dielectric parameters computed from the 4-Cole-Cole equations. The mixture characterizations used for the brain and muscle tissue simulation liquids are according to the data by C. Gabriel and G. Hartagrove [13]. (see Table 4.2)

INGREDIENTS (% by weight)	835MHz		1900MHz	
	Brain	Muscle	Brain	Muscle
De-ionized water	41.75	52.50	54.90	40.40
DGBE	0.000	0.000	44.92	0.000
SUGAR	56.00	45.00	0.000	58.00
SALT	1.450	1.400	0.180	0.500
BACTERIACIDE	0.100	0.100	0.000	0.100
HEC	1.000	1.000	0.000	1.000
Dielectric Constant Target	41.50	55.20	40.00	53.30
Conductivity (S/m) Target	0.900	0.970	1.400	1.520

Table. 4.1 Composition of the Tissue Equivalent Matter

4.5 Device Holder for Transmitters

In combination with the SAM Twin Phantom V4.0, the Mounting Device (see Fig. 4.6) enables the rotation of the accurately, and repeatably be positioned according to the IEC, IEEE, CENELEC, FCC specifications. The device holder can be locked at different phantom locations (left head, right head, flat phantom).

*Note : A simulating human hand is not used due to the complex anatomical and geometrical structure of the hand that may produce infinite number of configurations [12]. To produce the worst-case condition (the hand absorbs antenna output power), the hand is omitted during the tests.



Figure. 4.6 Device Holder

4.6 Validation Dipole

The reference dipole should have a return loss better than -20 dB (measured in the setup) at the resonant frequency to reduce the uncertainty in the power measurement.

Validation Dipole Specifications

Construction:	Symmetrical dipole with 1/4 balun. Enables measurement of feedpoint impedance with NWA. Matched for use near flat phantoms filled with head simulating solutions. Includes distance holder and tripod adaptor.
Calibration:	Calibrated SAR value for specified position and input power at the flat phantom in simulating solution
Frequency:	835 MHz, 1900 MHz
Return Loss:	> 20 dB at specified validation position
Power Capability:	> 100 W ($f < 1$ GHz); > 40 W ($f > 1$ GHz)
Dimensions:	D835V2: dipole length: 161 mm; overall height: 330 mm D1900V2: dipole length: 68 mm; overall height: 300 mm



Figure 4.7 Validation Dipole

5. SAR MEASUREMENT PROCEDURE

The evaluation was performed using the following procedure:

- 1) The SAR measurement was taken at a selected spatial reference point to monitor power variations during testing. This fixed location point was measured and used as a reference value.
- 2) The SAR distribution at the exposed side of the head was measured at a distance of 3.9mm from the inner surface of the shell. The area covered the entire dimension of the head and the horizontal grid spacing was 15mm x 15mm.
- 3) Based on the area scan data, the area of the maximum absorption was determined by spline interpolation. Around this point, a volume of 32mm x 32mm x 34mm (fine resolution volume scan, zoom scan) was assessed by measuring 5 x 5 x 7 points. On this basis of this data set, the spatial peak SAR value was evaluated with the following procedure:
 - a. The data at the surface was extrapolated, since the center of the dipoles is 2.7mm away from the tip of the probe and the distance between the surface and the lowest measuring point is 1.2mm. The extrapolation was based on a least square algorithm [15]. A polynomial of the fourth order was calculated through the points in z-axes. This polynomial was then used to evaluate the points between the surface and the probe tip.
 - b. The maximum interpolated value was searched with a straight-forward algorithm. Around this maximum the SAR values averaged over the spatial volumes (1g or 10g) were computed using the 3D-Spline interpolation algorithm. The 3D-spline is composed of three one-dimensional splines with the "Not a knot" condition (in x, y, and z directions) [15][16]. The volume was integrated with the trapezoidal algorithm. One thousand points (10 x 10 x 10) were interpolated to calculate the average.
 - c. All neighboring volumes were evaluated until no neighboring volume with a higher average value was found.
- 4) The SAR reference value, at the same location as procedure #1, was re-measured. If the value changed by more than 5%, the evaluation is repeated.

6. DEFINITION OF REFERENCE POINT

6.1 EAR Reference Point

Figure 6.1 shows the front, back and side views of the SAM Twin Phantom. The point "M" is the reference point for the center of the mouth, "LE" is the left ear reference point (ERP), and "RE" is the right ERP. The ERPs are 15mm posterior to the entrance to the ear canal (EEC) along the B-M line (Back-Mouth), as shown in Figure 6.2. The plane passing through the two ear canals and M is defined as the Reference Plane. The line N-F (Neck-Front) is perpendicular to the reference plane and passing through the RE (or LE) is called the Reference Pivoting Line (see Fig. 6.3). Line B-M is perpendicular to the N-F line. Both N-F and B-M lines are marked on the external phantom shell to facilitate handset positioning [5].

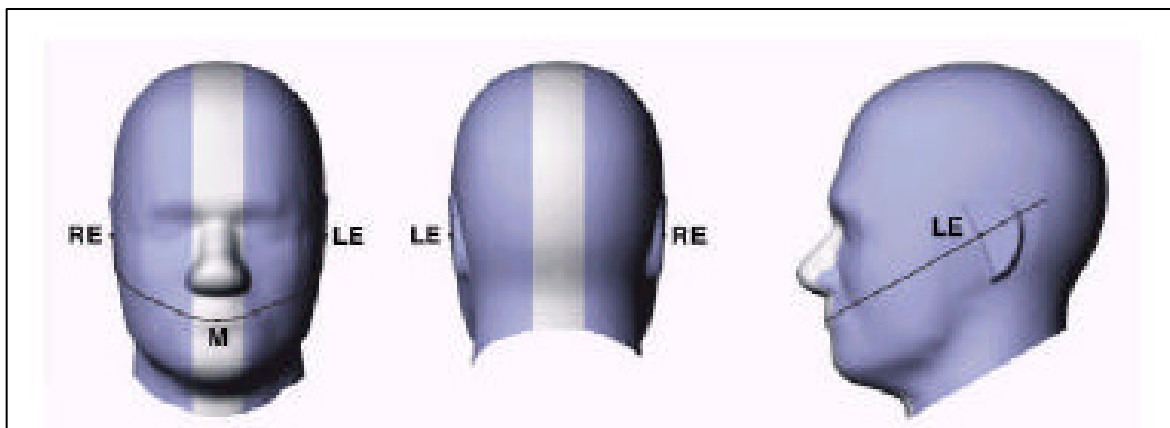


Figure 6.1 Front, back and side view of SAM Twin Phantom

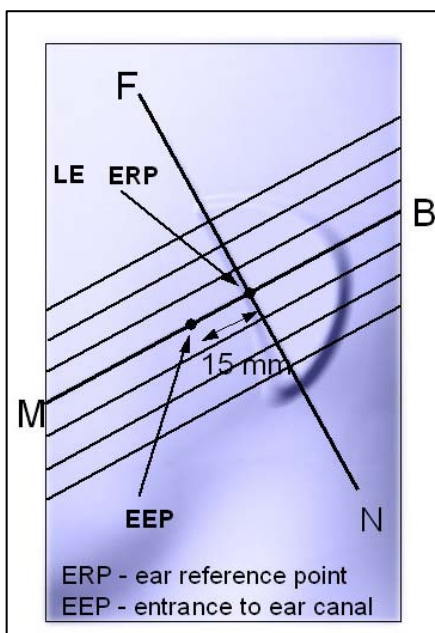


Figure 6.2 Close-Up, side view of ERP

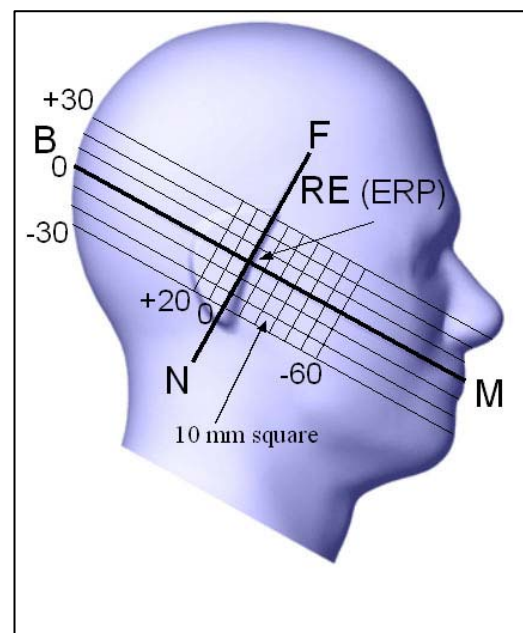


Figure 6.3 Side view of the phantom showing relevant markings

6.2 Handset Reference Points

Two imaginary lines on the handset were established: the vertical centerline and the horizontal line. The test device was placed in a normal operating position with the “test device reference point” located along the “vertical centerline” on the front of the device aligned to the “ear reference point” (see Fig. 6.4). The “test device reference point” was then located at the same level as the center of the ear reference point. The test device was positioned so that the “vertical centerline” was bisecting the front surface of the handset at its top and bottom edges, positioning the “ear reference point” on the outer surface of the both the left and right head phantoms on the ear reference point.

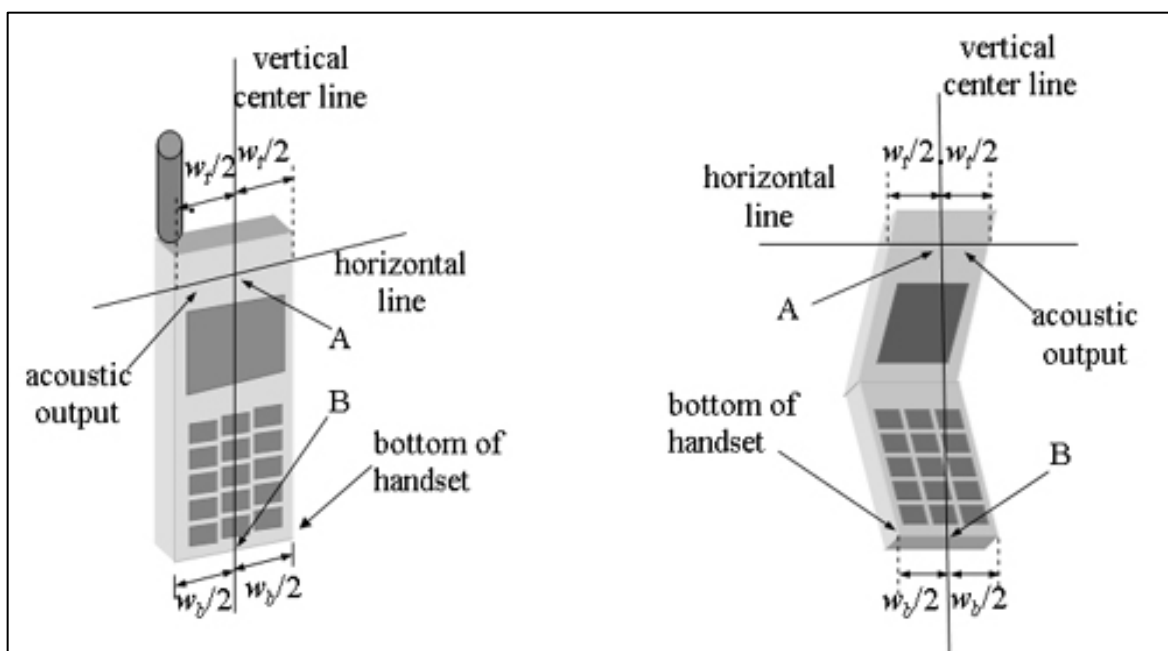


Figure 6.4 Handset Vertical Center & Horizontal Line Reference Points

7. TEST CONFIGURATION POSITIONS

7.1 Positioning for Cheek/Touch

- 1) Ready the handset for talk operation, if necessary. For example, for handsets with a cover piece, open the cover. (If the phone can also be used with the cover closed, both configurations must be tested.)
- 2) Define two imaginary lines on the handset: the vertical centerline and the horizontal line. The vertical centerline passes through two points on the front side of the handset: the midpoint of the width w_t of the handset at the level of the acoustic output (point A on Fig. 6.4), and the midpoint of the width w_b of the bottom of the handset (point B). The horizontal line is perpendicular to the vertical centerline and passes through the center of the acoustic output (see Fig. 6.4). The two lines intersect at point A. Note that for many handsets, point A coincides with the center of the acoustic output. However, the acoustic output may be located elsewhere on the horizontal line. Also note that the vertical centerline is not necessarily parallel to the front face of the handset (see Fig. 6.4), especially for clamshell handsets, handsets with lip pieces, and other irregularly-shaped handsets.
- 3) Position the handset close to the surface of the phantom touch that point A is on the (virtual) extension of the line passing through points RE and LE on the phantom (see Fig. 7.1), such that the plane defined by the vertical center line and the horizontal line of the phone is approximately parallel to the sagittal plane of the phantom.
- 4) Translate the handset towards the phantom along the line passing through RE and LE until the handset touches the ear.
- 5) While maintaining the handset in this plane, rotate it around the LE-RE line until the vertical centerline is in the plane normal to MB-NF including the line MB (called the reference plane).
- 6) Rotate the phone around the vertical centerline until the phone (horizontal line) is symmetrical with respect to the line NF.
- 7) While maintaining the vertical centerline in the reference plane, keeping point A on the line passing through RE and LE, and maintaining the phone contact with the ear, rotate the handset about the line NF until any point on the handset is in contact with a phantom point below the pinna (cheek). (see Fig. 7.1) The physical angles of rotation should be noted.

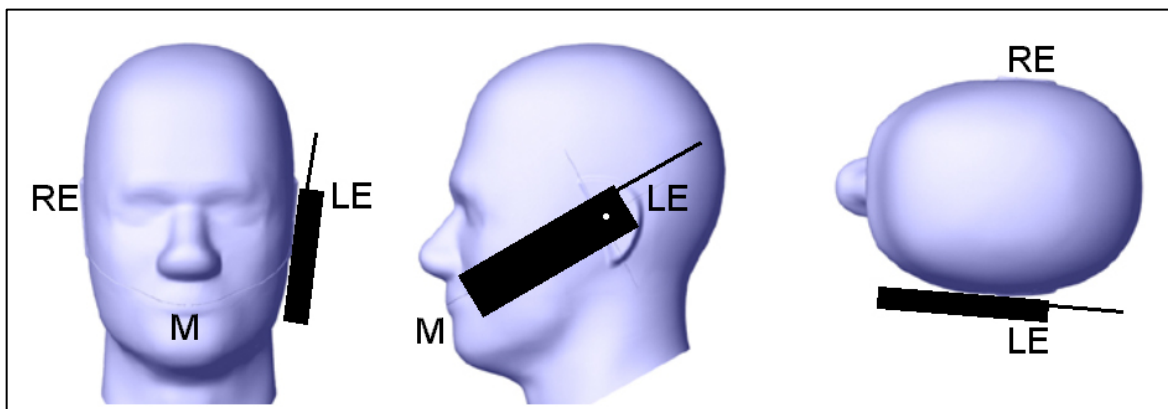


Figure 7.1 Front, Side and Top View of Cheek/Touch Position

7.2 Positioning for Ear / 15° Tilt

With the test device aligned in the “Cheek/Touch Position”:

- 1) While maintaining the orientation of the phone retract the phone parallel to the reference plane far enough to enable a rotation of the phone by 15 degree.
- 2) Rotate the phone around the horizontal line by 15 degree.
- 3) While maintaining the orientation of the phone, move the phone parallel to the reference plane until any part of the phone touches the head. (In this position, point A will be located on the line RE-LE). The tilted position is obtained when the contact is on the pinna. If the contact is at any location other than the pinna, the angle of the phone shall be reduced. The tilted position is obtained if any part of the phone is in contact of the ear as well as a second part of the phone is contact with the head. (see Fig. 7.2)

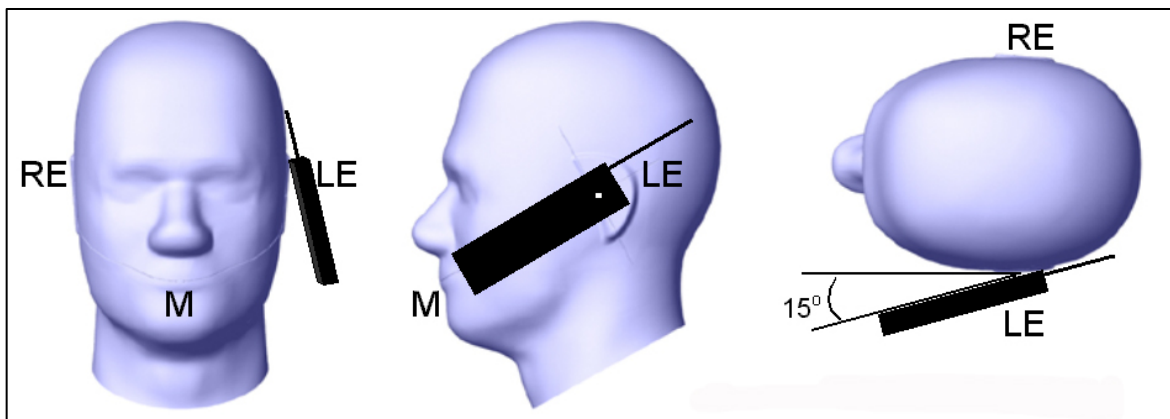


Figure 7.2 Front, Side and Top View of Ear/15 Tilt Position

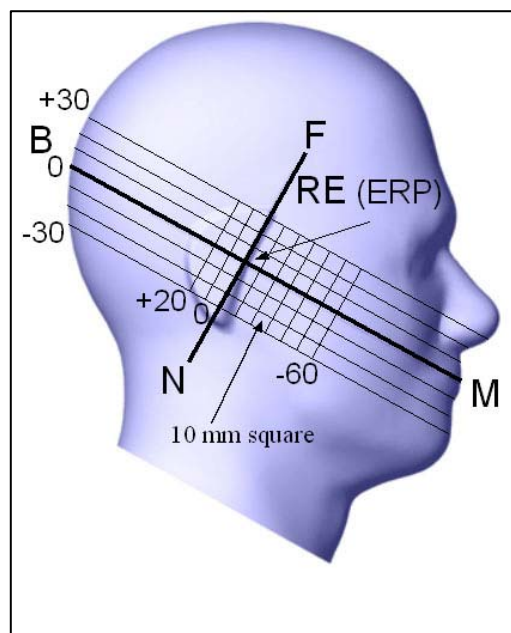


Figure 7.3 Side view of the phantom showing relevant markings

7.3 Body Holster /Belt Clip Configurations

Body-worn operation configurations are tested with the belt-clips and holsters attached to the device and positioned against a flat phantom in a normal use configuration. (see Fig. 7.4) A device with a headset output is tested with a headset connected to the device. Body dielectric parameters are used.

Accessories for Body-worn operation configurations are divided into two categories: those that do not contain metallic components and those that do contain metallic components. When multiple accessories that do not contain metallic components are supplied with the device, the device is tested with only the accessory that dictates the closest spacing to the body. Then multiple accessories that contain metallic components are supplied with the device, the device is tested with each accessory that contains a unique metallic component. If multiple accessories share an identical metallic component (i.e. the same metallic belt-clip used with different holsters with no other metallic components) only the accessory that dictates the closest spacing to the body is tested.

Body-worn accessories may not always be supplied or available as options for some devices intended to be authorized for body-worn use. In this case, a test configuration where a separation distance between the back of the device and the flat phantom is used. All test position spacings are documented.

Transmitters that are designed to operate in front of a person's face, as in push-to-talk configurations, are tested for SAR compliance is tested with the accessory(ies), including headsets and microphones, attached to the device and positioned against a flat phantom in a normal use configuration.

In all case SAR measurements are performed to investigate the worst case positioning. Worst-case positioning is then documented and used to perform Body SAR testing.

In order for users to be aware of the body-worn operation requirements for meeting RF exposure compliance, operation instructing instructions and cautions statements are included in the user's manual.

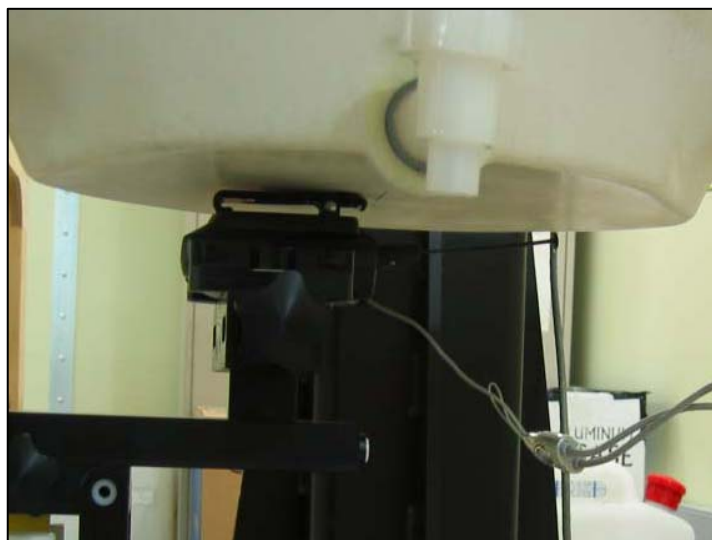


Figure 7.4 Body Holster Configuration

8. MEASUREMENT UNCERTAINTY

	Description	Type	Prob. Dist.	Divider	C _i	Std. Unc.	V _{eff}
Measure, Equipment	Probe Calibration	B	Normal	1	1	± 4.8%	8
	Axial Isotropy	B	Rectan.	$\sqrt{3}$	0.7	± 1.9%	8
	Hemispherical Isotropy	B	Rectan.	$\sqrt{3}$	0.7	± 3.9%	8
	Boundary Effect	B	Rectan.	$\sqrt{3}$	1	± 0.6%	8
	Linearity	B	Rectan.	$\sqrt{3}$	1	± 2.7%	8
	Detection Limits	B	Rectan.	$\sqrt{3}$	1	± 0.0%	8
	Readout Electronics	B	Normal	1	1	± 1.0%	8
	Response Time	B	Rectan.	$\sqrt{3}$	1	± 0.0%	8
	Integration Time	B	Rectan.	$\sqrt{3}$	1	± 1.0%	8
	RF Ambient Conditions	B	Rectan.	$\sqrt{3}$	1	± 1.7%	8
	Scanning System	B	Rectan.	$\sqrt{3}$	1	± 0.2%	8
	Phantom Shell	B	Rectan.	$\sqrt{3}$	1	± 2.3%	8
	Probe Positioning	B	Rectan.	$\sqrt{3}$	1	± 1.7%	8
	Device Positioning	A	Normal	1	1	± 2.8%	71
Physical Parameter	Power Drift	B	Rectan.	$\sqrt{3}$	1	± 2.9%	8
	Liquid Conductivity (Target)	B	Rectan.	$\sqrt{3}$	0.7	± 2.0%	8
	Liquid Conductivity (Measurement)	B	Rectan.	$\sqrt{3}$	0.7	± 1.7%	8
	Liquid Permittivity (Target)	B	Rectan.	$\sqrt{3}$	0.6	± 1.7%	8
	Liquid Permittivity (Measurement)	B	Rectan.	$\sqrt{3}$	0.6	± 1.5%	8
Mechanical Constraints	Extrapolation and Integration	B	Rectan.	$\sqrt{3}$	1	± 0.6%	8
Combined	± 9.6 %						
Expanded	± 19.2 % (k = 2)						

Table 6.1 Worst-Case uncertainty budget for DASY4 assessed according to CENELEC EN 50361. The budget is valid for the frequency range 300MHz-3GHz and represents a worst-case analysis.

9. ANSI/IEEE C95.1 –2005 RF EXPOSURE LIMITS

Uncontrolled Environment

UNCONTROLLED ENVIRONMENTS are defined as locations where there is the exposure of individuals who have no knowledge or control of their exposure. The general population/uncontrolled exposure limits are applicable to situations in which the general public may be exposed or in which persons who are exposed as a consequence of their employment may not be made fully aware of the potential for exposure or cannot exercise control over their exposure. Members of the general public would come under this category when exposure is not employment-related; for example, in the case of a wireless transmitter that exposes persons in its vicinity.

Controlled Environment

CONTROLLED ENVIRONMENTS are defined as locations where there is exposure that may be incurred by persons who are aware of the potential for exposure, (i.e. as a result of employment or occupation). In general, occupational/controlled exposure limits are applicable to situations in which persons are exposed as a consequence of their employment, who have been made fully aware of the potential for exposure and can exercise control over their exposure. This exposure category is also applicable when the exposure is of a transient nature due to incidental passage through a location where the exposure levels may be higher than the general population/uncontrolled limits, but the exposed person is fully aware of the potential for exposure and can exercise control over his or her exposure by leaving the area or by some other appropriate means.

	UNCONTROLLED ENVIRONMENT General Population (W/kg) or (mW/g)	CONTROLLED ENVIRONMENT General Population (W/kg) or (mW/g)
SPATIAL PEAK SAR¹ Brain	1.60	8.00
SPATIAL PEAK SAR² Whole Body	0.08	0.40
SPATIAL PEAK SAR³ Hands, Feet, Ankles, Wrists	4.00	20.00

Table 9.1 Safety Limits for Partial Body Exposure [2]

NOTE:

- 1 The Spatial Peak value of the SAR averaged over any 1 gram of tissue (defined as a tissue volume in the shape of a cube) and over the appropriate averaging time.
- 2 The Spatial Average value of the SAR averaged over the whole body.
- 3 The Spatial Peak value of the SAR averaged over any 10 grams of tissue (defined as a tissue volume in the shape of a cube) The Spatial Peak value of the SAR averaged over any 10 grams of tissue (defined as a tissue volume in the shape of a cube)

10. SYSTEM VERIFICATION

Tissue Verification

MEASURED TISSUE PARAMETERS								
Liquid Temp (°C)	21.8							
Liquid Depth (mm)	150 ± 1							
Tissue	835MHz Brain		835MHz Muscle		1900MHz Brain		1900MHz Muscle	
Date	07/21/2008		07/21/2008		07/22/2008		07/22/2008	
Parameters	Target	Measured	Target	Measured	Target	Measured	Target	Measured
Dielectric Constant: ϵ	41.5	41.1	55.2	55.3	40.0	41.1	53.3	52.9
Conductivity: σ	0.90	0.893	0.97	0.96	1.40	1.42	1.52	1.52
Deviation (%)	ϵ : -0.96 σ : -0.77		ϵ : +0.18 σ : -1.03		ϵ : +2.75 σ : +1.42		ϵ : -0.75 σ : 0.00	

Table 10.1 Simulated Tissue Verification [5]

Test System Validation

Prior to assessment, the system is verified to the $\pm 10\%$ of the specifications at 835MHz and 1900MHz by using the system validation kit(s). (Graphic Plots Attached)

SYSTEM DIPOLE VALIDATION TARGET & MEASURED						
Tissue	System Validation Kit	Date	Liquid Temp (°C)	Targeted SAR _{1g} (mW/g)	Measured SAR _{1g} (mW/g)	Deviation (%)
835MHz Brain	D835V2, S/N: 468	07/21/2008	21.8	9.07	9.16	+0.99
1900MHz Brain	D1900V2, S/N: 5d057	07/22/2008	21.8	39.5	39.4	-0.25

Table 10.2 System Validation [5]

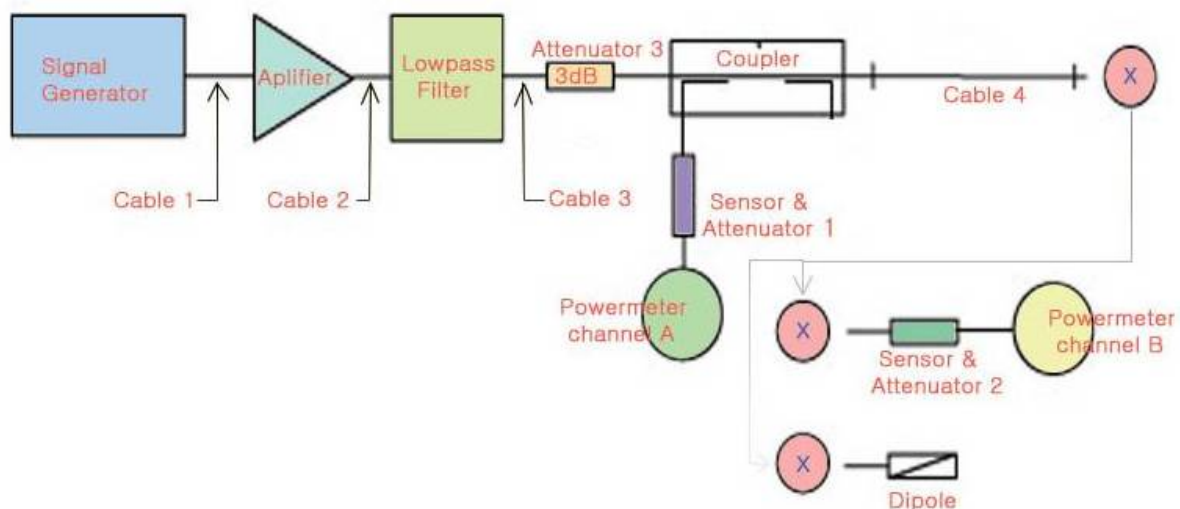


Figure 10.1 Dipole Validation Test Setup

835 MHz Liquid Depth**1900 MHz Liquid Depth**

11. SAR Evaluation Considerations for Handsets with Multiple Transmitters and Antennas

11.1 SAR Evaluation Considerations

These procedures were followed according to FCC "SAR Evaluation Considerations for Handsets with Multiple Transmitters and Antennas", February 2008. The procedures are applicable to phones with built-in unlicensed transmitters, such as 802.11 a/b/g and Bluetooth devices.

For an unlicensed transmitter that does not transmit simultaneously with other transmitters and its output is $< 60/f_{\text{(GHz)}} \text{ mW}$, SAR evaluation is not required. When simultaneous transmission applies, power thresholds (P_{Ref}) derived from multiples of $\frac{1}{2} \cdot 60/f_{\text{(GHz)}}$ are used to reduce stand-alone SAR requirements for unlicensed devices incorporated in cell phones. Values of P_{Ref} for applicable frequencies are shown in Table 11.1.

	2.45	5.15–5.35	5.47–5.85	GHz
P _{Ref}	12	6	5	mW

Table 11.1 Device output power should be rounded to the nearest mW to compare with values specified in this table.

When the output of an unlicensed transmitter is $\leq P_{\text{Ref}}$ and its antenna(s) is $> 2.5 \text{ cm}$ from other antennas, stand-alone SAR evaluation is not required for that unlicensed transmitter. When the output of an unlicensed transmitter is $\leq 2 \cdot P_{\text{Ref}}$ and its antenna(s) is $> 5.0 \text{ cm}$ from other antennas, stand-alone SAR evaluation is also not required for that unlicensed transmitter.

FCC ID: BEJKC550d

BT Max. RF output power: 1.71 dB (1.48 mW)

Because the conducted output power level of the BT transmitter is less than P_{Ref} , and the BT antenna is more than 2.5 cm from the GSM antenna, neither simultaneous SAR nor stand-alone BT SAR are required for the EUT.

12. MEASUREMENT RESULTS

Ambient Conditions Target

Ambient Temperature (°C):	22 ± 1
Relative Humidity (%):	55 ± 5
Liquid Tissue Temperature (°C):	21.5 ± 0.5
Liquid Tissue Depth (mm):	150 ± 1
Mixture Type:	835MHz Head
Dielectric Constant:	41.5
Conductivity:	0.90

Measurement Results

ANSI / IEEE C95.1- 2005 - SAFETY LIMIT Spatial Peak Uncontrolled Exposure/General Population							Brain 1.6 W/kg averaged over 1 gram		
MEASUREMENT RESULTS (Head SAR)									
Frequency		Mod.	Conducted Power (dBm)		Battery	Device Test Position	Antenna Position	Slider Position	SAR (W/kg)
MHz	Ch.		Start	End					
836.60	190	GSM 850	31.89	31.88	Standard	Right Touch	Fixed	Down	0.072
836.60	190	GSM 850	31.90	31.90	Standard	Right Touch	Fixed	Up	0.171
836.60	190	GSM 850	31.92	31.89	Standard	Right Tilt	Fixed	Down	0.057
836.60	190	GSM 850	31.96	31.93	Standard	Right Tilt	Fixed	Up	0.069
836.60	190	GSM 850	31.89	31.85	Standard	Left Touch	Fixed	Down	0.061
836.60	190	GSM 850	31.98	31.95	Standard	Left Touch	Fixed	Up	0.264
836.60	190	GSM 850	31.95	31.90	Standard	Left Tilt	Fixed	Down	0.054
836.60	190	GSM 850	31.90	31.89	Standard	Left Tilt	Fixed	Up	0.074
836.60	190	GSM 850	31.92	31.89	Standard	Left Touch (Z-Scan)	Fixed	Up	0.264

- The test data reported are the worst-case SAR value with the position set in a typical configuration. Test procedures used are according to FCC/OET Bulletin 65, Supplement C [July 2001].
- All modes of operation were investigated, and worst-case results are reported.
- Battery is fully charged for all readings. Standard batteries are the only options.
- Tissue parameters and temperatures are listed on the SAR plots.
- Justification for reduced test configurations: Per FCC/OET Bulletin 65 Supplement C [July 2001], if the SAR measured at the middle channel for each test configuration (left, right, cheek/touch, tilt/ear, extended and retracted) is at least 3.0dB lower than the SAR limit, testing at the high and low channels is optional for such test configuration(s).



Eui - Soon Park
E. S. Park / Technical Manager
MCCL

12. MEASUREMENT RESULTS (Continued)

Ambient Conditions Target

Ambient Temperature (°C):	22 ± 1
Relative Humidity (%):	55 ± 5
Liquid Tissue Temperature (°C):	21.5 ± 0.5
Liquid Tissue Depth (mm):	150 ± 1
Mixture Type:	1900MHz Head
Dielectric Constant:	40.0
Conductivity:	1.40

Measurement Results

ANSI / IEEE C95.1- 2005 - SAFETY LIMIT Spatial Peak Uncontrolled Exposure/General Population	Brain 1.6 W/kg averaged over 1 gram
--	---

MEASUREMENT RESULTS (Head SAR)									
Frequency		Mod.	Conducted Power (dBm)		Battery	Device Test Position	Antenna Position	Slider Position	SAR (W/kg)
MHz	Ch.		Start	End					
1880.00	661	PCS 1900	28.95	28.93	Standard	Right Touch	Fixed	Down	0.303
1880.00	661	PCS 1900	28.99	28.86	Standard	Right Touch	Fixed	Up	0.116
1880.00	661	PCS 1900	29.01	29.00	Standard	Right Tilt	Fixed	Down	0.382
1880.00	661	PCS 1900	28.96	28.93	Standard	Right Tilt	Fixed	Up	0.115
1880.00	661	PCS 1900	28.98	28.95	Standard	Left Touch	Fixed	Down	0.258
1880.00	661	PCS 1900	29.00	28.97	Standard	Left Touch	Fixed	Up	0.135
1880.00	661	PCS 1900	28.97	28.95	Standard	Left Tilt	Fixed	Down	0.376
1880.00	661	PCS 1900	28.99	29.01	Standard	Left Tilt	Fixed	Up	0.103
1880.00	661	PCS 1900	29.03	28.98	Standard	Right Tilt (Z-Scan)	Fixed	Down	0.382

1. The test data reported are the worst-case SAR value with the position set in a typical configuration. Test procedures used are according to FCC/OET Bulletin 65, Supplement C [July 2001].
2. All modes of operation were investigated, and worst-case results are reported.
3. Battery is fully charged for all readings. Standard batteries are the only options.
4. Tissue parameters and temperatures are listed on the SAR plots.
5. Justification for reduced test configurations: Per FCC/OET Bulletin 65 Supplement C [July 2001], if the SAR measured at the middle channel for each test configuration (left, right, cheek/touch, tilt/ear, extended and retracted) is at least 3.0dB lower than the SAR limit, testing at the high and low channels is optional for such test configuration(s).



Eui - Soon Park
E. S. Park / Technical Manager
MCCL

12. MEASUREMENT RESULTS (Continued)

Ambient Conditions Target

Ambient Temperature (°C):	<u>22 ± 1</u>
Relative Humidity (%):	<u>55 ± 5</u>
Liquid Tissue Temperature (°C):	<u>21.5 ± 0.5</u>
Liquid Tissue Depth (mm):	<u>150 ± 1</u>
Mixture Type:	<u>835MHz Muscle</u>
Dielectric Constant:	<u>55.2</u>
Conductivity:	<u>0.97</u>

Measurement Results

ANSI / IEEE C95.1- 2005 - SAFETY LIMIT Spatial Peak Uncontrolled Exposure/General Population							Muscle 1.6 W/kg averaged over 1 gram		
MEASUREMENT RESULTS (Body SAR)									
Frequency		Mod.	Conducted Power (dBm)		Battery	Device Test Position	Antenna Position	Slider Position	SAR (W/kg)
MHz	Ch.		Start	End					
836.60	190	GPRS 850	28.75	28.76	Standard	2.0 [Front]	Fixed	Down	0.081
836.60	190	GPRS 850	28.76	28.77	Standard	2.0 [Front]	Fixed	Up	0.187
836.60	190	GPRS 850	28.74	28.76	Standard	2.0 [Rear]	Fixed	Down	0.281
836.60	190	GPRS 850	28.75	28.77	Standard	2.0 [Rear]	Fixed	Up	0.279
836.60	190	GPRS 850	28.76	28.78	Standard	2.0 [Rear] (Z-Scan)	Fixed	Down	0.281

1. The test data reported are the worst-case SAR value with the position set in a typical configuration.
Test procedures used are according to FCC/OET Bulletin 65, Supplement C [July 2001].
2. All modes of operation were investigated, and worst-case results are reported.
3. Battery is fully charged for all readings. Standard batteries are the only options.
4. Tissue parameters and temperatures are listed on the SAR plots.
5. Justification for reduced test configurations: Per FCC/OET Bulletin 65 Supplement C [July 2001], if the SAR measured at the middle channel for each test configuration (left, right, cheek/touch, tilt/ear, extended and retracted) is at least 3.0dB lower than the SAR limit, testing at the high and low channels is optional for such test configuration(s).



Eui - Soon Park
E. S. Park / Technical Manager
MCCL

12. MEASUREMENT RESULTS (Continued)

Ambient Conditions Target

Ambient Temperature (°C):	<u>22 ± 1</u>
Relative Humidity (%):	<u>55 ± 5</u>
Liquid Tissue Temperature (°C):	<u>21.5 ± 0.5</u>
Liquid Tissue Depth (mm):	<u>150 ± 1</u>
Mixture Type:	<u>1900MHz Muscle</u>
Dielectric Constant:	<u>53.3</u>
Conductivity:	<u>1.52</u>

Measurement Results

ANSI / IEEE C95.1- 2005 - SAFETY LIMIT Spatial Peak Uncontrolled Exposure/General Population							Muscle 1.6 W/kg averaged over 1 gram		
MEASUREMENT RESULTS (Body SAR)									
Frequency		Mod.	Conducted Power (dBm)		Battery	Device Test Position	Antenna Position	Slider Position	SAR (W/kg)
MHz	Ch.		Start	End					
1880.00	661	GPRS 1900	27.75	27.73	Standard	2.0 [Front]	Fixed	Down	0.167
1880.00	661	GPRS 1900	27.76	27.75	Standard	2.0 [Front]	Fixed	Up	0.139
1880.00	661	GPRS 1900	27.77	27.74	Standard	2.0 [Rear]	Fixed	Down	0.393
1880.00	661	GPRS 1900	27.74	27.73	Standard	2.0 [Rear]	Fixed	Up	0.265
1880.00	661	GPRS 1900	27.75	27.74	Standard	2.0 [Rear] (Z-Scan)	Fixed	Down	0.393

- The test data reported are the worst-case SAR value with the position set in a typical configuration. Test procedures used are according to FCC/OET Bulletin 65, Supplement C [July 2001].
- All modes of operation were investigated, and worst-case results are reported.
- Battery is fully charged for all readings. Standard batteries are the only options.
- Tissue parameters and temperatures are listed on the SAR plots.
- Justification for reduced test configurations: Per FCC/OET Bulletin 65 Supplement C [July 2001], if the SAR measured at the middle channel for each test configuration (left, right, cheek/touch, tilt/ear, extended and retracted) is at least 3.0dB lower than the SAR limit, testing at the high and low channels is optional for such test configuration(s).



Eui - Soon Park
E. S. Park / Technical Manager
MCCL

13. TEST EQUIPMENT

Equipment List and Calibration

Name of Equipment	Manufacturer	Model Type	Serial Number	Cal. Due date
Robot	Stäubli	RX90BL	507PA1	N/A
SAM Twin Phantom	SPEAG	V4.0	TP-1066	N/A
SAM Twin Phantom	SPEAG	V4.0	TP-1244	N/A
DAE	SPEAG	DAE4	534	09/24/08
E-Field Probe	SPEAG	ET3DV6	1715	09/26/08
Validation Dipole 835MHz	SPEAG	D835V2	468	04/23/09
Validation Dipole 1900MHz	SPEAG	D1900V2	5d057	04/22/09
S-Parameter Network Analyzer	Agilent	8753ES	MY4002948	06/23/09
Dielectric Probe Kit	Agilent	85070D	US01440173	N/A
Signal Generator	Agilent	E4421B	MY41000199	03/07/09
High Power RF Amplifier	EM Power	BBS3Q7ECK	1014	03/07/09
Dual Direction Coupler	Agilent	778D-012	19309	06/23/09
EPM-Series Power Meter	Agilent	E4419B	GB39290525	04/25/09
Power Sensor	Agilent	8481A	MY41092711	05/23/09
Power Sensor	Agilent	8481A	MY41092717	04/22/09
Attenuator	Agilent	8491A	59049	03/07/09
Attenuator	Agilent	8491A	59151	03/07/09
Low Pass Filter 1.5 GHz	Dymstec	LA-15N	–	N/A
Low Pass Filter 3.0 GHz	Dymstec	LA-30N	–	N/A
Thermometer/Hygrometer	SATO	SK-L200TH	8440586	06/24/09
Wireless Communication Test	Agilent	E5515C	GB44051999	03/10/09

Table 12.1 Test Equipment List and Calibration

NOTE:

The E-field probe was calibrated by SPEAG, by waveguide technique procedure. Dipole Validation measurement is performed by LG Electronics. before each test. The brain simulating material is calibrated by LG Electronics using the dielectric probe system and network analyzer to determine the conductivity and permittivity (dielectric constant) of the brain-equivalent material.

14. REFERENCES

- [1] Product standard to demonstrate the compliance of mobile phone with the basic restriction related to human exposure electromagnetic(300MHz – 3GHz), CENELEC EN 50360, July 2001.
- [2] Basic standard for the measurement of Specific Absorption Rate related to human exposure to electromagnetic fields from mobile phone(300MHz – 3GHz), CENELEC EN 50361, July 2001.
- [3] Council Recommendations 1999/519/EC on the limitations of exposure of the general public to electromagnetic fields (300MHz – 3GHz) annex II
- [4] International Commission on Non-Ionising Radiation Protection (1998), Guidelines for limiting exposure in time-varying electric, magnetic, and electromagnetic field (up to 300 GHz). Health Physical 74, 494-522.
- [5] IEEE Standards Coordinating Committee 34 – IEEE Std. 1528 - 2003, Draft Recommended Practice for Determining the Peak Spatial-Average Specific Absorption Rate (SAR) in the Human Body Due to Wireless Communications Devices: Experimental Techniques.
- [6] NCRP, National Council on Radiation Protection and Measurements, Biological Effects and Exposure Criteria for Radio Frequency Electromagnetic Fields, NCRP Report No. 86, 1986. Reprinted Feb. 1995.
- [7] T. Schmid, O. Egger, N. Kuster, Automated E-field scanning system for dosimetric assessments, IEEE Transaction on Microwave Theory and Techniques, vol. 44, Jan. 1996, pp. 105-113.
- [8] K. Pokovic, T. Schmid, N. Kuster, Robust setup for precise calibration of E-field probes in tissue simulating liquids at mobile communications frequencies, ICECOM97, Oct. 1997, pp. 120-124.
- [9] K. Pokovic, T. Schmid, and N. Kuster, E-field Probe with improved isotropy in brain simulating liquids, Proceedings of the ELMAR, Zadar, Croatia, June 23-25, 1996, pp. 172-175.
- [10] Schmid & Partner Engineering AG, Application Note: Data Storage and Evaluation, June 1998, p2.
- [11] V. Hombach, K. Meier, M. Burkhardt, E. Kuhn, N. Kuster, The Dependence of EM Energy Absorption upon Human Head Modeling at 900 MHz, IEEE Transaction on Microwave Theory and Techniques, vol. 44 no. 10, Oct. 1996, pp. 1865-1873.
- [12] N. Kuster and Q. Balzano, Energy absorption mechanism by biological bodies in the near field of dipole antennas above 300MHz, IEEE Transaction on Vehicular Technology, vol. 41, no. 1, Feb. 1992, pp. 17-23.
- [13] G. Hartsgrrove, A. Kraszewski, A. Surowiec, Simulated Biological Materials for Electromagnetic Radiation Absorption Studies, University of Ottawa, Bioelectromagnetics, Canada: 1987, pp. 29-36.
- [14] Q. Balzano, O. Garay, T. Manning Jr., Electromagnetic Energy Exposure of Simulated Users of Portable Cellular Telephones, IEEE Transactions on Vehicular Technology, vol. 44, no.3, Aug. 1995.
- [15] W. Gander, Computermathematick, Birkhaeuser, Basel, 1992.
- [16] W.H. Press, S.A. Teukolsky, W.T. Vetterling, and B.P. Flannery, Numerical Recipes in C, The Art of Scientific Computing, Second edition, Cambridge University Press, 1992.
- [17] N. Kuster, R. Kastle, T. Schmid, Dosimetric evaluation of mobile communications equipment with known precision, IEEE Transaction on Communications, vol. E80-B, no. 5, May 1997, pp. 645-652.
- [18] CENELEC CLC/SC111B, European Prestandard (prENV 50166-2), Human Exposure to Electromagnetic Fields High-frequency: 10kHz-300GHz, Jan. 1995.
- [19] Prof. Dr. Niels Kuster, ETH, Eidgenössische Technische Hochschule Zürich, Dosimetric Evaluation of the Cellular Phone.

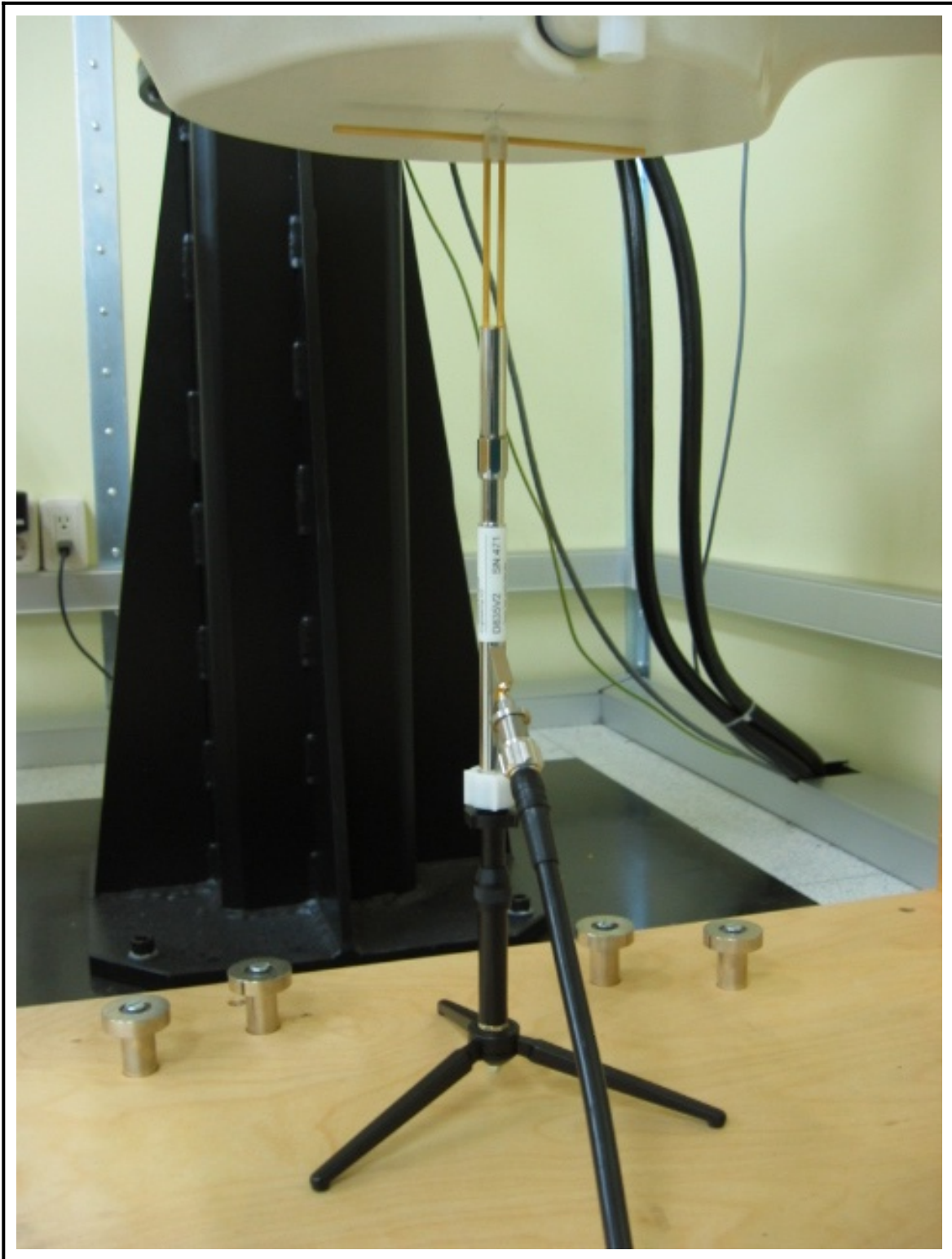
APPENDIX A: Validation Test Data

Figure 1 835 MHz Dipole Validation Test Setup



Figure 2 1900 MHz Dipole Validation Test Setup

LG Electronics Inc.

DUT: Dipole 835MHz;Type: D835V2;Serial: 468

Communication System: CW; Frequency: 835 MHz;Duty Cycle: 1:1
Medium: Head 835 MHz;(σ = 0.893 mho/m; ε_r = 41.1; ρ = 1000 kg/m³)
Phantom section: Flat Section

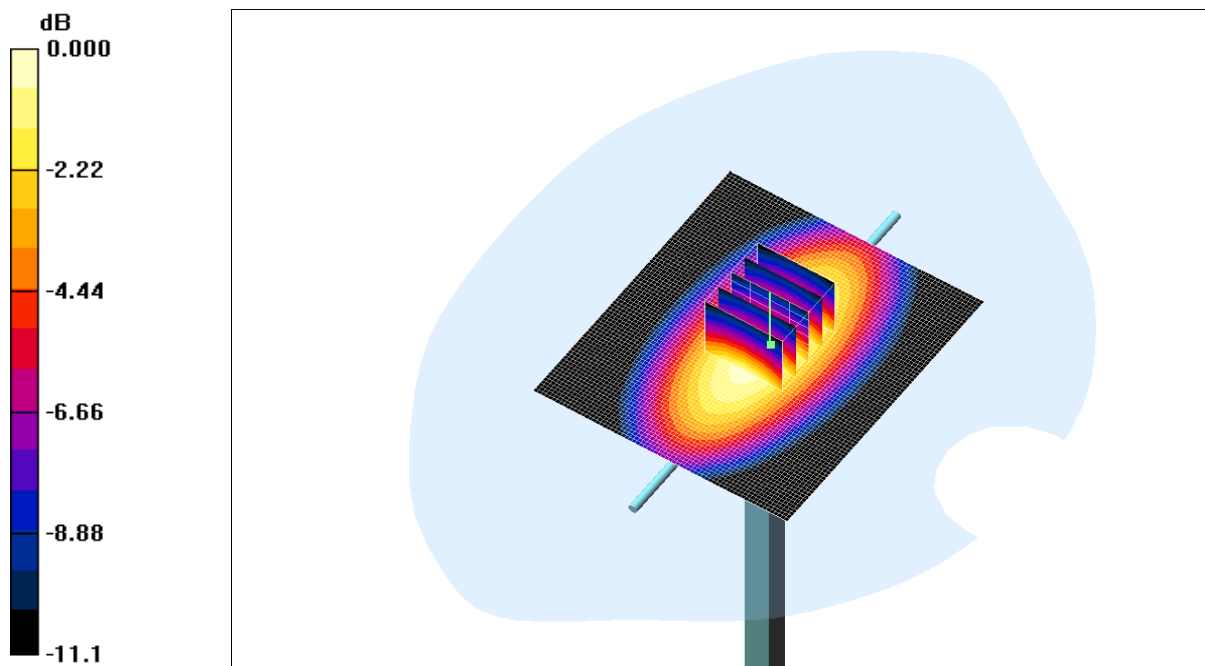
Test Date: 07/21/2008;Ambient Temp: 22.9°C;Tissue Temp: 21.8°C

Probe: ET3DV6 – SN1715; ConvF(6.4, 6.4, 6.4); Calibrated: 2007-09-26
Sensor-Surface: 4mm (Mechanical Surface Detection)
Electronics: DAE4 Sn534; Calibrated: 2007-09-24
Phantom: SAM 835; Type: SAM 4.0; Serial: TP-1066
Measurement SW: DASY4, V4.7 Build 55; Post processing SW: SEMCAD, V1.8 Build 171

835 MHz Dipole Validation

Area Scan (61x61x1): Measurement grid: dx=15mm, dy=15mm
Maximum value of SAR (interpolated) = 2.49mW/g

Zoom Scan (5x5x7)/Cube 0: Measurement grid: dx=5mm, dy=5mm, dz=5mm
Reference Value = 54.3V/m; Power Drift = 0.011dB
Peak SAR (extrapolated) = 3.43W/kg
SAR(1 g) = 2.29mW/g; SAR(10 g) = 1.47mW/g
Maximum value of SAR (measured) = 2.48mW/g



0 dB = 2.48mW/g

LG Electronics Inc.

DUT: Dipole 1900MHz; Type: D1900V2; Serial: 5d057

Communication System: CW; Frequency: 1900 MHz; Duty Cycle: 1:1
Medium: Head 1900 MHz; ($\sigma = 1.42$ mho/m; $\epsilon_r = 41.1$; $\rho = 1000$ kg/m³)
Phantom section: Flat Section

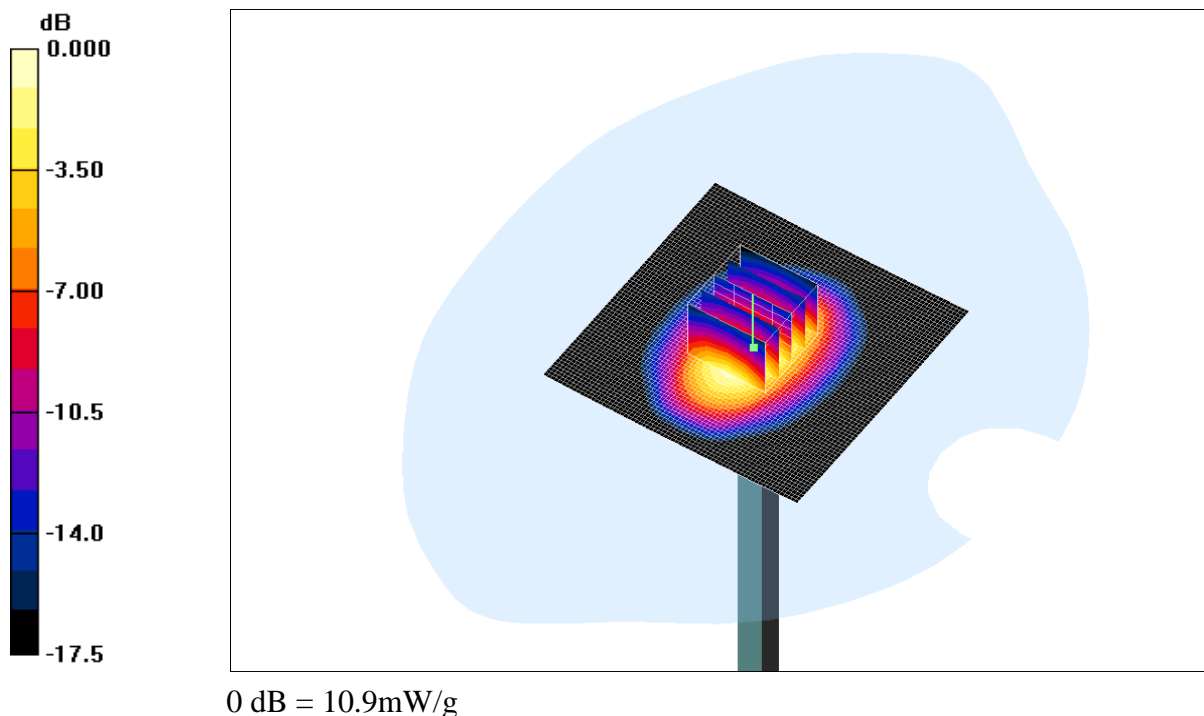
Test Date: 07/22/2008; Ambient Temp: 22.9°C; Tissue Temp: 21.8°C

Probe: ET3DV6 - SN1715; ConvF(5.14, 5.14, 5.14); Calibrated: 2007-09-26
Sensor-Surface: 4mm (Mechanical Surface Detection)
Electronics: DAE4 Sn534; Calibrated: 2007-09-24
Phantom: SAM 1800; Type: SAM 4.0; Serial: TP-1244
Measurement SW: DASY4, V4.7 Build 55; Post processing SW: SEMCAD, V1.8 Build 171

1900 MHz Dipole Validation

Area Scan (61x61x1): Measurement grid: dx=15mm, dy=15mm
Maximum value of SAR (interpolated) = 11.6mW/g

Zoom Scan (5x5x7)/Cube 0: Measurement grid: dx=5mm, dy=5mm, dz=5mm
Reference Value = 92.2V/m; Power Drift = -0.008dB
Peak SAR (extrapolated) = 16.4W/kg
SAR(1 g) = 9.85mW/g; SAR(10 g) = 5.33mW/g
Maximum value of SAR (measured) = 10.9mW/g



APPENDIX B: SAR Test Data

LG Electronics Inc.

DUT: KC550d ;Type: Cellular/ PCS GSM Phone; Serial:#1

Communication System: GSM 850; Frequency: 836.60 MHz;Duty Cycle: 1:8.3

Medium: Head 836.60 MHz;(σ = 0.896 mho/m; ε_r = 41; ρ = 1000 kg/m³)

Phantom section: Right Section

Test Date: 07/21/2008;Ambient Temp: 22. 9°C;Tissue Temp: 21.8°C

Probe: ET3DV6 - SN1715; ConvF(6.4, 6.4, 6.4); Calibrated: 2007-09-26

Sensor-Surface: 4mm (Mechanical Surface Detection)

Electronics: DAE4 Sn534; Calibrated: 2007-09-24

Phantom: SAM 835; Type: SAM 4.0; Serial:TP-1066

Measurement SW: DASY4, V4.7 Build 55; Postprocessing SW: SEMCAD, V1.8 Build 171

Right Head Touch, Ch.190, Slider Down, Fixed Ant., Standard Battery

Area Scan (61x61x1): Measurement grid: dx=15mm, dy=15mm

Maximum value of SAR (interpolated) = 0.080mW/g

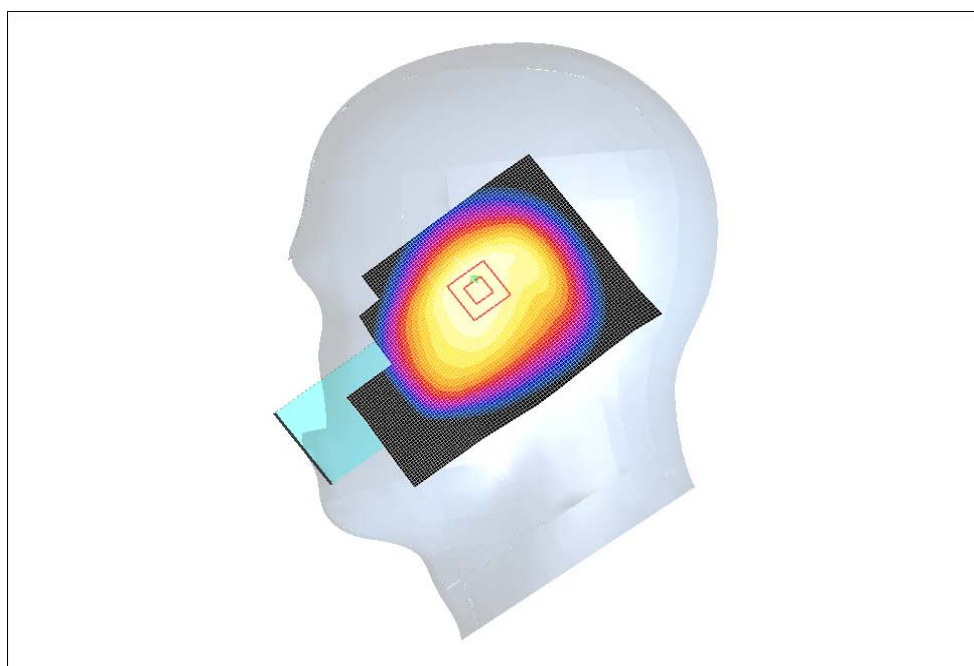
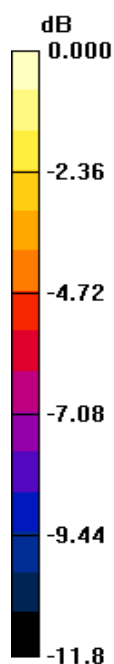
Zoom Scan (5x5x7)/Cube 0: Measurement grid: dx=5mm, dy=5mm, dz=5mm

Reference Value = 8.01V/m; Power Drift = -0.005dB

Peak SAR (extrapolated) = 0.099W/kg

SAR(1 g) = 0.072mW/g; SAR(10 g) = 0.053mW/g

Maximum value of SAR (measured) = 0.075mW/g



0 dB = 0.075mW/g

LG Electronics Inc.

DUT: KC550d ;Type: Cellular/ PCS GSM Phone; Serial:#1

Communication System: GSM 850; Frequency: 836.60 MHz;Duty Cycle: 1:8.3

Medium: Head 836.60 MHz;(σ = 0.896 mho/m; ε_r = 41; ρ = 1000 kg/m³)

Phantom section: Right Section

Test Date: 07/21/2008;Ambient Temp: 22. 9°C;Tissue Temp: 21.8°C

Probe: ET3DV6 - SN1715; ConvF(6.4, 6.4, 6.4); Calibrated: 2007-09-26

Sensor-Surface: 4mm (Mechanical Surface Detection)

Electronics: DAE4 Sn534; Calibrated: 2007-09-24

Phantom: SAM 835; Type: SAM 4.0; Serial:TP-1066

Measurement SW: DASY4, V4.7 Build 55; Postprocessing SW: SEMCAD, V1.8 Build 171

Right Head Touch, Ch.190, Slider Up, Fixed Ant., Standard Battery

Area Scan (61x61x1): Measurement grid: dx=15mm, dy=15mm

Maximum value of SAR (interpolated) = 0.185mW/g

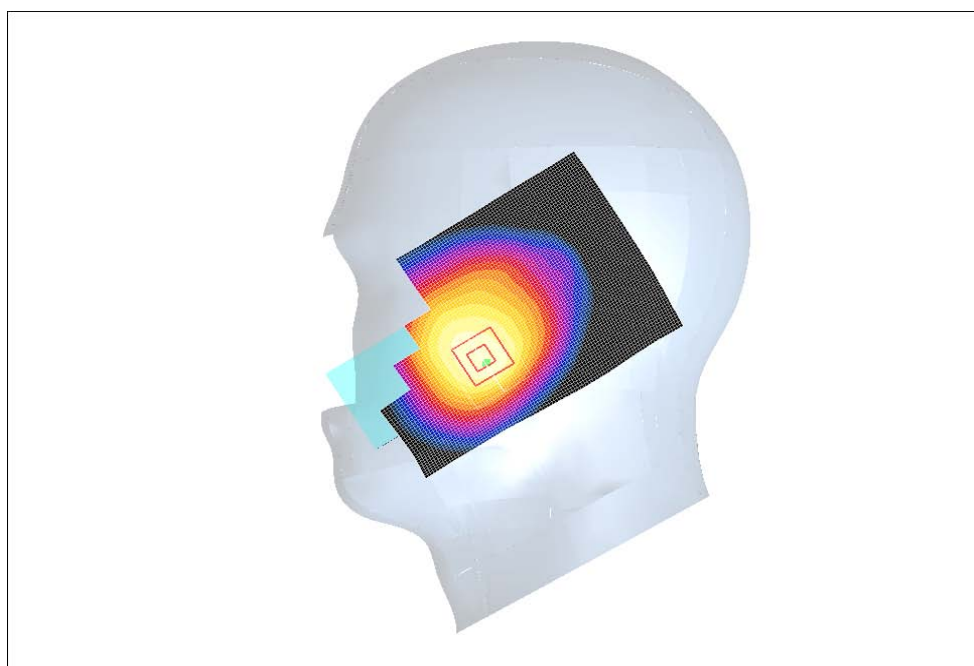
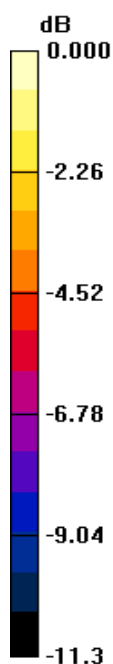
Zoom Scan (5x5x7)/Cube 0: Measurement grid: dx=5mm, dy=5mm, dz=5mm

Reference Value = 5.02V/m; Power Drift = 0.038dB

Peak SAR (extrapolated) = 0.245W/kg

SAR(1 g) = 0.171mW/g; SAR(10 g) = 0.120mW/g

Maximum value of SAR (measured) = 0.181mW/g



0 dB = 0.181mW/g

LG Electronics Inc.

DUT: KC550d ;Type: Cellular/ PCS GSM Phone; Serial:#1

Communication System: GSM 850; Frequency: 836.60 MHz;Duty Cycle: 1:8.3

Medium: Head 836.60 MHz;(σ = 0.896 mho/m; ε_r = 41; ρ = 1000 kg/m³)

Phantom section: Right Section

Test Date: 07/21/2008;Ambient Temp: 22. 9°C;Tissue Temp: 21.8°C

Probe: ET3DV6 - SN1715; ConvF(6.4, 6.4, 6.4); Calibrated: 2007-09-26

Sensor-Surface: 4mm (Mechanical Surface Detection)

Electronics: DAE4 Sn534; Calibrated: 2007-09-24

Phantom: SAM 835; Type: SAM 4.0; Serial:TP-1066

Measurement SW: DASY4, V4.7 Build 55; Postprocessing SW: SEMCAD, V1.8 Build 171

Right Head Tilt, Ch.190, Slider Down, Fixed Ant., Standard Battery

Area Scan (61x61x1): Measurement grid: dx=15mm, dy=15mm

Maximum value of SAR (interpolated) = 0.068mW/g

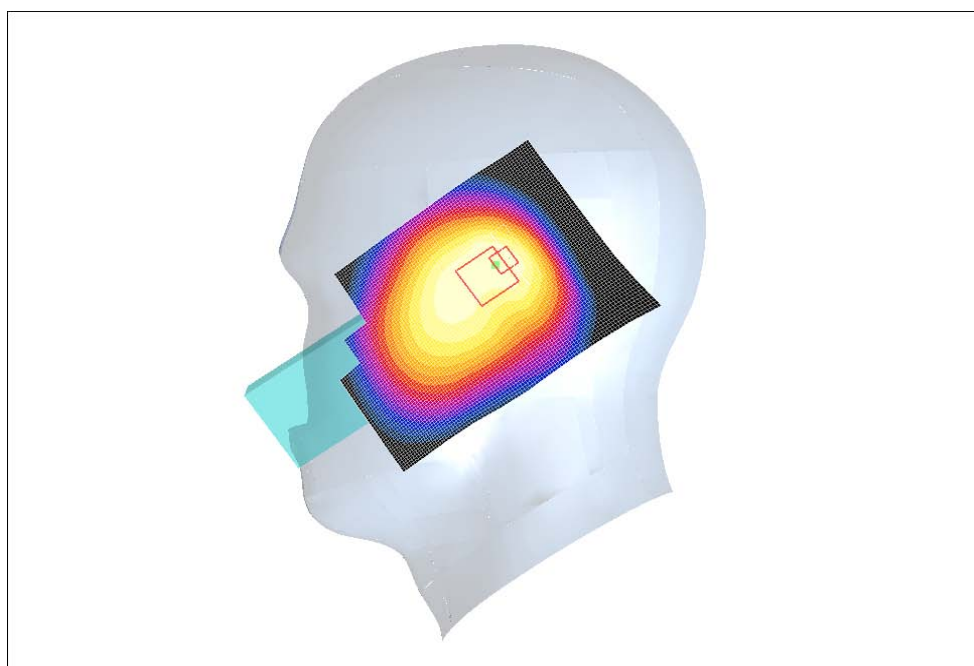
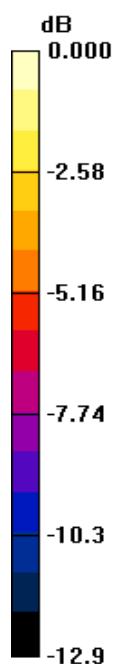
Zoom Scan (5x5x7)/Cube 0: Measurement grid: dx=5mm, dy=5mm, dz=5mm

Reference Value = 7.83V/m; Power Drift = -0.009dB

Peak SAR (extrapolated) = 0.090W/kg

SAR(1 g) = 0.057mW/g; SAR(10 g) = 0.042mW/g

Maximum value of SAR (measured) = 0.062mW/g



0 dB = 0.062mW/g

LG Electronics Inc.

DUT: KC550d ;Type: Cellular/ PCS GSM Phone; Serial:#1

Communication System: GSM 850; Frequency: 836.60 MHz;Duty Cycle: 1:8.3

Medium: Head 836.60 MHz;(σ = 0.896 mho/m; ε_r = 41; ρ = 1000 kg/m³)

Phantom section: Right Section

Test Date: 07/21/2008;Ambient Temp: 22. 9°C;Tissue Temp: 21.8°C

Probe: ET3DV6 - SN1715; ConvF(6.4, 6.4, 6.4); Calibrated: 2007-09-26

Sensor-Surface: 4mm (Mechanical Surface Detection)

Electronics: DAE4 Sn534; Calibrated: 2007-09-24

Phantom: SAM 835; Type: SAM 4.0; Serial:TP-1066

Measurement SW: DASY4, V4.7 Build 55; Postprocessing SW: SEMCAD, V1.8 Build 171

Right Head Tilt, Ch.190, Slider Up, Fixed Ant., Standard Battery

Area Scan (61x61x1): Measurement grid: dx=15mm, dy=15mm

Maximum value of SAR (interpolated) = 0.072mW/g

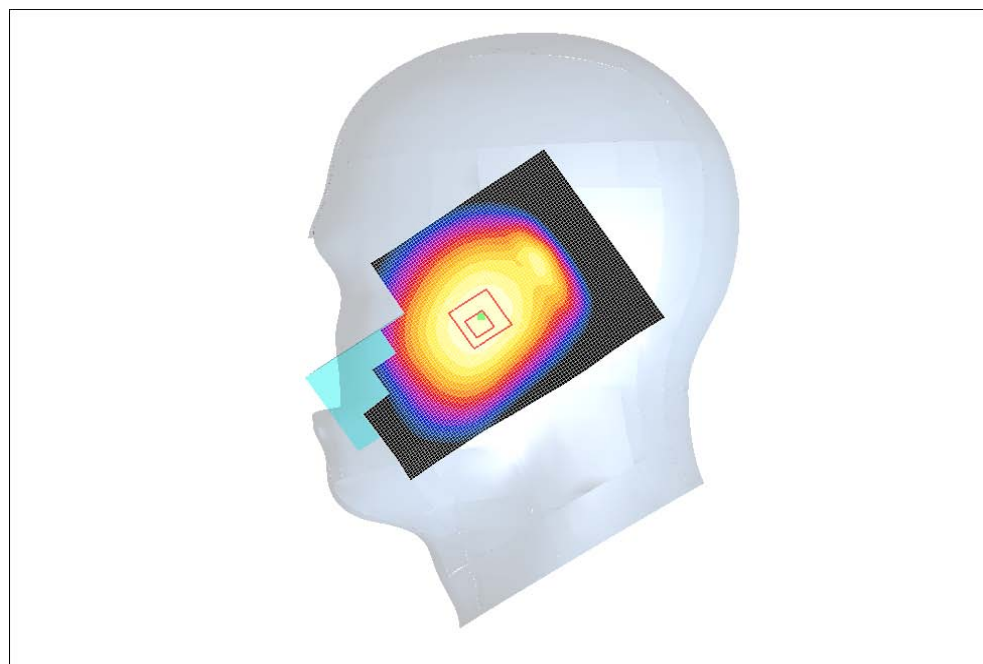
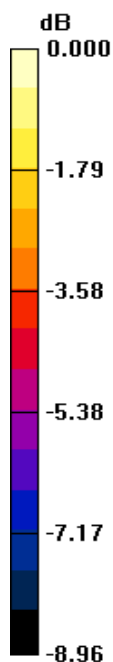
Zoom Scan (5x5x7)/Cube 0: Measurement grid: dx=5mm, dy=5mm, dz=5mm

Reference Value = 6.96V/m; Power Drift = 0.042dB

Peak SAR (extrapolated) = 0.087W/kg

SAR(1 g) = 0.069mW/g; SAR(10 g) = 0.052mW/g

Maximum value of SAR (measured) = 0.072mW/g



0 dB = 0.072mW/g

LG Electronics Inc.

DUT: KC550d ;Type: Cellular/ PCS GSM Phone; Serial:#1

Communication System: GSM 850; Frequency: 836.60 MHz;Duty Cycle: 1:8.3

Medium: Head 836.60 MHz;(σ = 0.896 mho/m; ε_r = 41; ρ = 1000 kg/m³)

Phantom section: Left Section

Test Date: 07/21/2008;Ambient Temp: 22. 9°C;Tissue Temp: 21.8°C

Probe: ET3DV6 - SN1715; ConvF(6.4, 6.4, 6.4); Calibrated: 2007-09-26

Sensor-Surface: 4mm (Mechanical Surface Detection)

Electronics: DAE4 Sn534; Calibrated: 2007-09-24

Phantom: SAM 835; Type: SAM 4.0; Serial:TP-1066

Measurement SW: DASY4, V4.7 Build 55; Postprocessing SW: SEMCAD, V1.8 Build 171

Left Head Touch, Ch.190, Slider Down, Fixed Ant., Standard Battery

Area Scan (61x61x1): Measurement grid: dx=15mm, dy=15mm

Maximum value of SAR (interpolated) =0.063mW/g

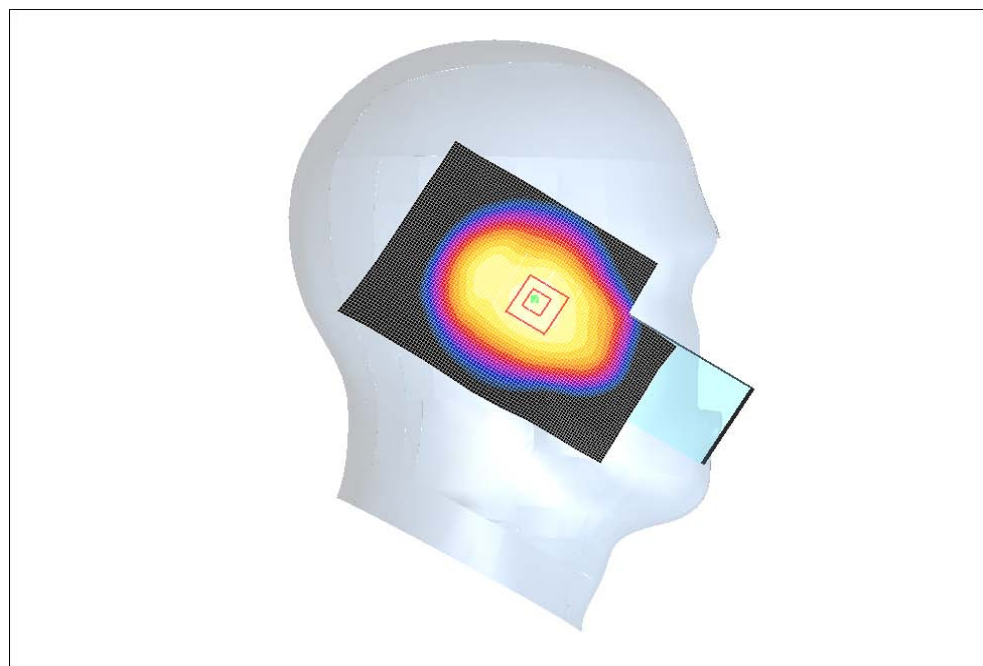
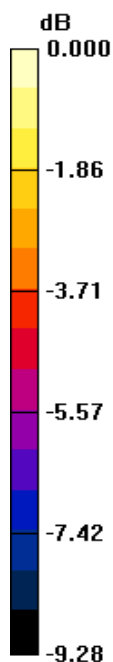
Zoom Scan (5x5x7)/Cube 0: Measurement grid: dx=5mm, dy=5mm, dz=5mm

Reference Value = 7.78V/m; Power Drift = -0.052dB

Peak SAR (extrapolated) = 0.075W/kg

SAR(1 g) = 0.061mW/g; SAR(10 g) = 0.046mW/g

Maximum value of SAR (measured) = 0.064mW/g



0 dB = 0.064mW/g

LG Electronics Inc.

DUT: KC550d ;Type: Cellular/ PCS GSM Phone; Serial:#1

Communication System: GSM 850; Frequency: 836.60 MHz;Duty Cycle: 1:8.3

Medium: Head 836.60 MHz;($\sigma = 0.896$ mho/m; $\epsilon_r = 41$; $\rho = 1000$ kg/m³)

Phantom section: Left Section

Test Date: 07/21/2008;Ambient Temp: 22. 9°C;Tissue Temp: 21.8°C

Probe: ET3DV6 - SN1715; ConvF(6.4, 6.4, 6.4); Calibrated: 2007-09-26

Sensor-Surface: 4mm (Mechanical Surface Detection)

Electronics: DAE4 Sn534; Calibrated: 2007-09-24

Phantom: SAM 835; Type: SAM 4.0; Serial:TP-1066

Measurement SW: DASY4, V4.7 Build 55; Postprocessing SW: SEMCAD, V1.8 Build 171

Left Head Touch, Ch.190, Slider Up, Fixed Ant., Standard Battery

Area Scan (61x61x1): Measurement grid: dx=15mm, dy=15mm

Maximum value of SAR (interpolated) = 0.281mW/g

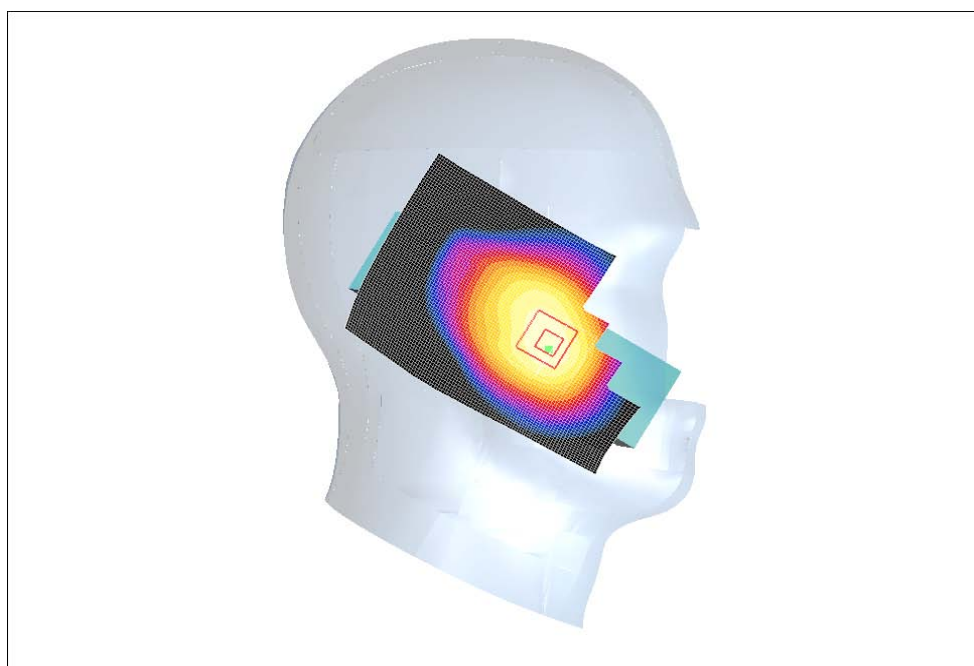
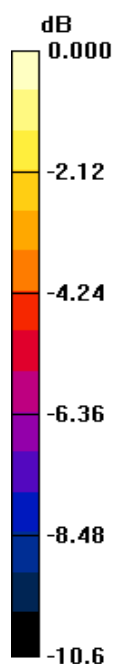
Zoom Scan (5x5x7)/Cube 0: Measurement grid: dx=5mm, dy=5mm, dz=5mm

Reference Value = 6.42V/m; Power Drift = -0.137dB

Peak SAR (extrapolated) = 0.355W/kg

SAR(1 g) = 0.264mW/g; SAR(10 g) = 0.189mW/g

Maximum value of SAR (measured) = 0.281mW/g



0 dB = 0.281mW/g

LG Electronics Inc.

DUT: KC550d ;Type: Cellular/ PCS GSM Phone; Serial:#1

Communication System: GSM 850; Frequency: 836.60 MHz;Duty Cycle: 1:8.3

Medium: Head 836.60 MHz;(σ = 0.896 mho/m; ε_r = 41; ρ = 1000 kg/m³)

Phantom section: Left Section

Test Date: 07/21/2008;Ambient Temp: 22. 9°C;Tissue Temp: 21.8°C

Probe: ET3DV6 - SN1715; ConvF(6.4, 6.4, 6.4); Calibrated: 2007-09-26

Sensor-Surface: 4mm (Mechanical Surface Detection)

Electronics: DAE4 Sn534; Calibrated: 2007-09-24

Phantom: SAM 835; Type: SAM 4.0; Serial:TP-1066

Measurement SW: DASY4, V4.7 Build 55; Postprocessing SW: SEMCAD, V1.8 Build 171

Left Head Tilt, Ch.190, Slider Down, Fixed Ant., Standard Battery

Area Scan (61x61x1): Measurement grid: dx=15mm, dy=15mm

Maximum value of SAR (interpolated) = 0.062mW/g

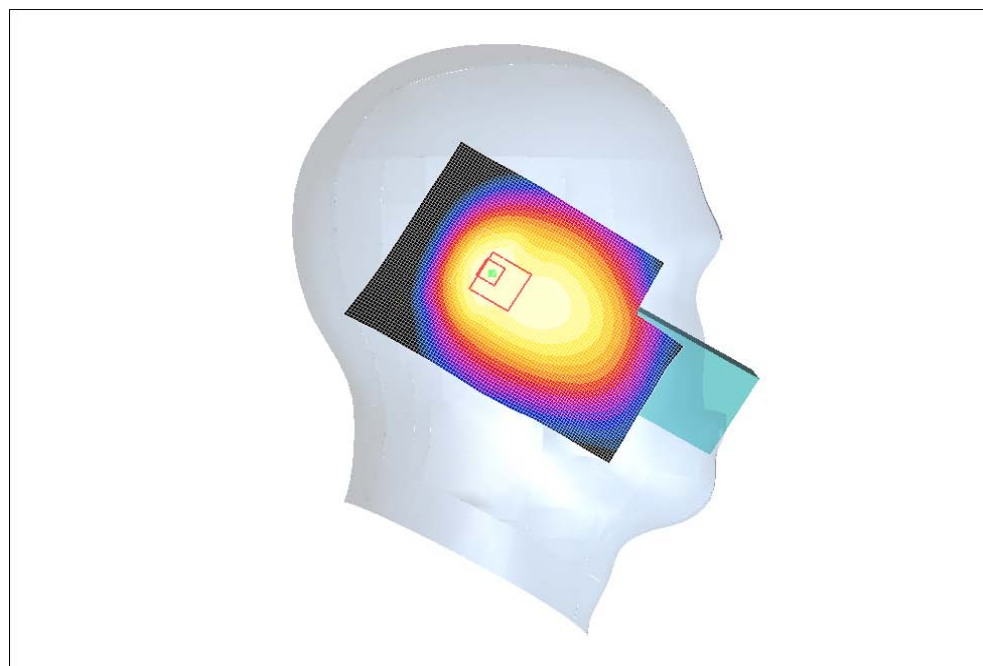
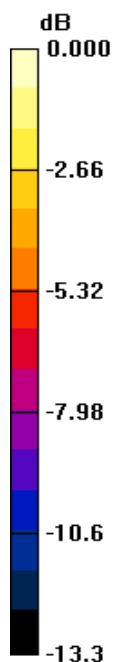
Zoom Scan (5x5x7)/Cube 0: Measurement grid: dx=5mm, dy=5mm, dz=5mm

Reference Value = 8.09V/m; Power Drift = 0.033dB

Peak SAR (extrapolated) = 0.087W/kg

SAR(1 g) = 0.054mW/g; SAR(10 g) = 0.038mW/g

Maximum value of SAR (measured) = 0.058mW/g



0 dB = 0.058mW/g

LG Electronics Inc.

DUT: KC550d ;Type: Cellular/ PCS GSM Phone; Serial:#1

Communication System: GSM 850; Frequency: 836.60 MHz;Duty Cycle: 1:8.3

Medium: Head 836.60 MHz;(σ = 0.896 mho/m; ε_r = 41; ρ = 1000 kg/m³)

Phantom section: Left Section

Test Date: 07/21/2008;Ambient Temp: 22. 9°C;Tissue Temp: 21.8°C

Probe: ET3DV6 - SN1715; ConvF(6.4, 6.4, 6.4); Calibrated: 2007-09-26

Sensor-Surface: 4mm (Mechanical Surface Detection)

Electronics: DAE4 Sn534; Calibrated: 2007-09-24

Phantom: SAM 835; Type: SAM 4.0; Serial:TP-1066

Measurement SW: DASY4, V4.7 Build 55; Postprocessing SW: SEMCAD, V1.8 Build 171

Left Head Tilt, Ch.190, Slider Up, Fixed Ant., Standard Battery

Area Scan (61x61x1): Measurement grid: dx=15mm, dy=15mm

Maximum value of SAR (interpolated) = 0.077mW/g

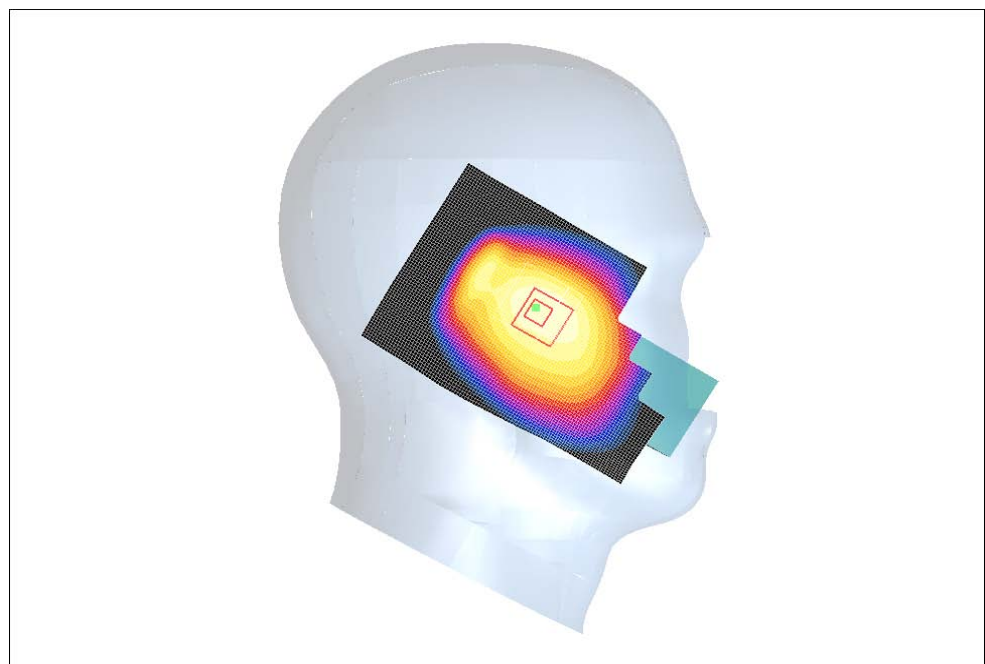
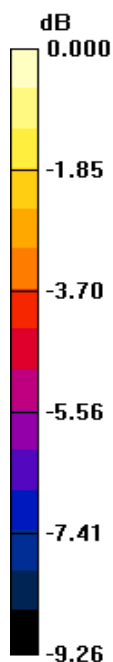
Zoom Scan (5x5x7)/Cube 0: Measurement grid: dx=5mm, dy=5mm, dz=5mm

Reference Value = 6.89V/m; Power Drift = 0.303dB

Peak SAR (extrapolated) = 0.093W/kg

SAR(1 g) = 0.074mW/g; SAR(10 g) = 0.056mW/g

Maximum value of SAR (measured) = 0.077mW/g



0 dB = 0.077mW/g

LG Electronics Inc.

DUT: KC550d ;Type: Cellular/ PCS GSM Phone; Serial:#1

Communication System: PCS 1900; Frequency: 1880.00 MHz;Duty Cycle: 1:8.3

Medium: Head 1880.00 MHz;(σ = 1.41 mho/m; ε_r = 41.2; ρ = 1000 kg/m³)

Phantom section: Right Section

Test Date: 07/22/2008;Ambient Temp: 22. 9°C;Tissue Temp: 21.8°C

Probe: ET3DV6 - SN1715; ConvF(5.14, 5.14, 5.14); Calibrated: 2007-09-26

Sensor-Surface: 4mm (Mechanical Surface Detection)

Electronics: DAE4 Sn534; Calibrated: 2007-09-24

Phantom: SAM 1800; Type: SAM 4.0; Serial:TP-1244

Measurement SW: DASY4, V4.7 Build 55; Postprocessing SW: SEMCAD, V1.8 Build 171

Right Head Touch, Ch.661, Slider Down, Fixed Ant., Standard Battery

Area Scan (61x61x1): Measurement grid: dx=15mm, dy=15mm

Maximum value of SAR (interpolated) = 0.326mW/g

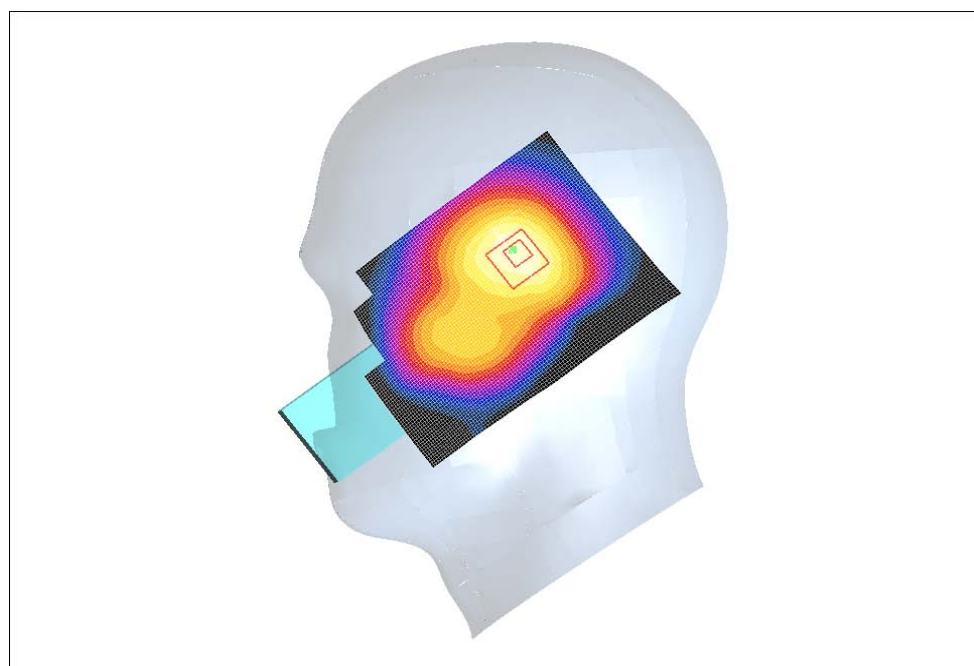
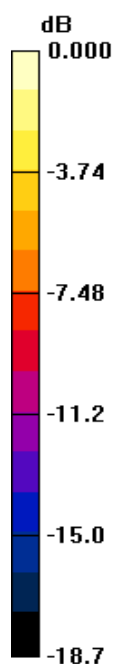
Zoom Scan (5x5x7)/Cube 0: Measurement grid: dx=5mm, dy=5mm, dz=5mm

Reference Value = 12.9V/m; Power Drift = 0.132dB

Peak SAR (extrapolated) = 0.488W/kg

SAR(1 g) = 0.303mW/g; SAR(10 g) = 0.174mW/g

Maximum value of SAR (measured) = 0.336mW/g



0 dB = 0.336mW/g

LG Electronics Inc.

DUT: KC550d ;Type: Cellular/ PCS GSM Phone; Serial:#1

Communication System: PCS 1900; Frequency: 1880.00 MHz;Duty Cycle: 1:8.3

Medium: Head 1880.00 MHz;(σ = 1.41 mho/m; ε_r = 41.2; ρ = 1000 kg/m³)

Phantom section: Right Section

Test Date: 07/22/2008;Ambient Temp: 22. 9°C;Tissue Temp: 21.8°C

Probe: ET3DV6 - SN1715; ConvF(5.14, 5.14, 5.14); Calibrated: 2007-09-26

Sensor-Surface: 4mm (Mechanical Surface Detection)

Electronics: DAE4 Sn534; Calibrated: 2007-09-24

Phantom: SAM 1800; Type: SAM 4.0; Serial:TP-1244

Measurement SW: DASY4, V4.7 Build 55; Post processing SW: SEMCAD, V1.8 Build 171

Right Head Touch, Ch.661, Slider Up, Fixed Ant., Standard Battery

Area Scan (61x61x1): Measurement grid: dx=15mm, dy=15mm

Maximum value of SAR (interpolated) = 0.130mW/g

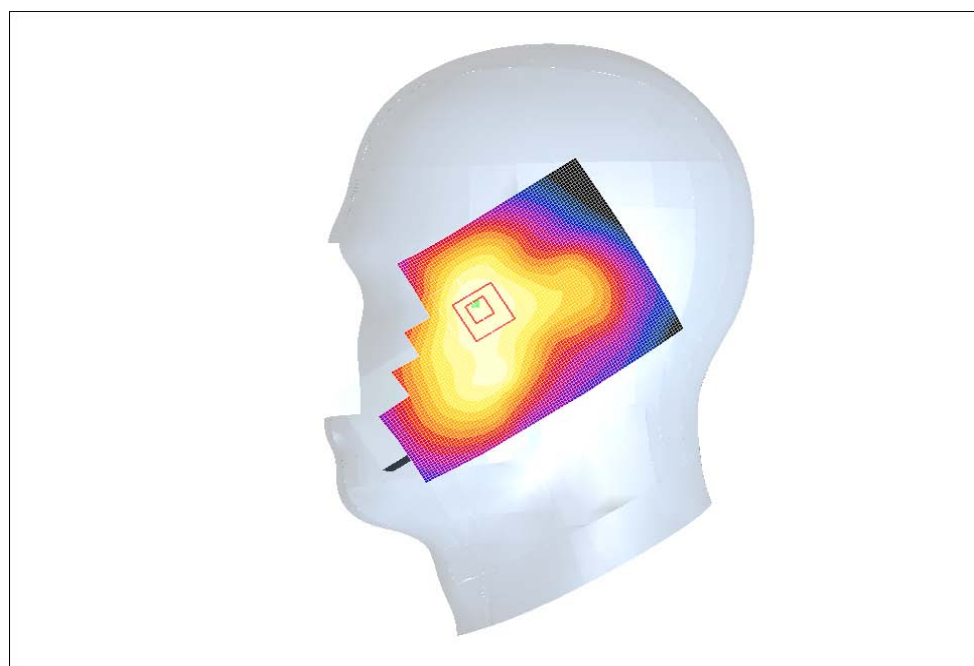
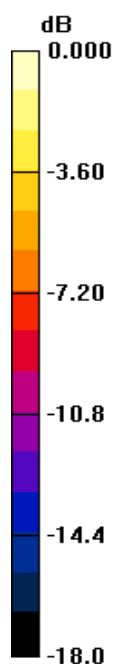
Zoom Scan (5x5x7)/Cube 0: Measurement grid: dx=5mm, dy=5mm, dz=5mm

Reference Value = 5.98V/m; Power Drift = 0.034dB

Peak SAR (extrapolated) = 0.181W/kg

SAR(1 g) = 0.116mW/g; SAR(10 g) = 0.075mW/g

Maximum value of SAR (measured) = 0.125mW/g



0 dB = 0.125mW/g

LG Electronics Inc.

DUT: KC550d ;Type: Cellular/ PCS GSM Phone; Serial:#1

Communication System: PCS 1900; Frequency: 1880.00 MHz;Duty Cycle: 1:8.3

Medium: Head 1880.00 MHz;(σ = 1.41 mho/m; ε_r = 41.2; ρ = 1000 kg/m³)

Phantom section: Right Section

Test Date: 07/22/2008;Ambient Temp: 22. 9°C;Tissue Temp: 21.8°C

Probe: ET3DV6 - SN1715; ConvF(5.14, 5.14, 5.14); Calibrated: 2007-09-26

Sensor-Surface: 4mm (Mechanical Surface Detection)

Electronics: DAE4 Sn534; Calibrated: 2007-09-24

Phantom: SAM 1800; Type: SAM 4.0; Serial:TP-1244

Measurement SW: DASY4, V4.7 Build 55; Postprocessing SW: SEMCAD, V1.8 Build 171

Right Head Tilt, Ch.661, Slider Down, Fixed Ant., Standard Battery

Area Scan (61x61x1): Measurement grid: dx=15mm, dy=15mm

Maximum value of SAR (interpolated) = 0.430mW/g

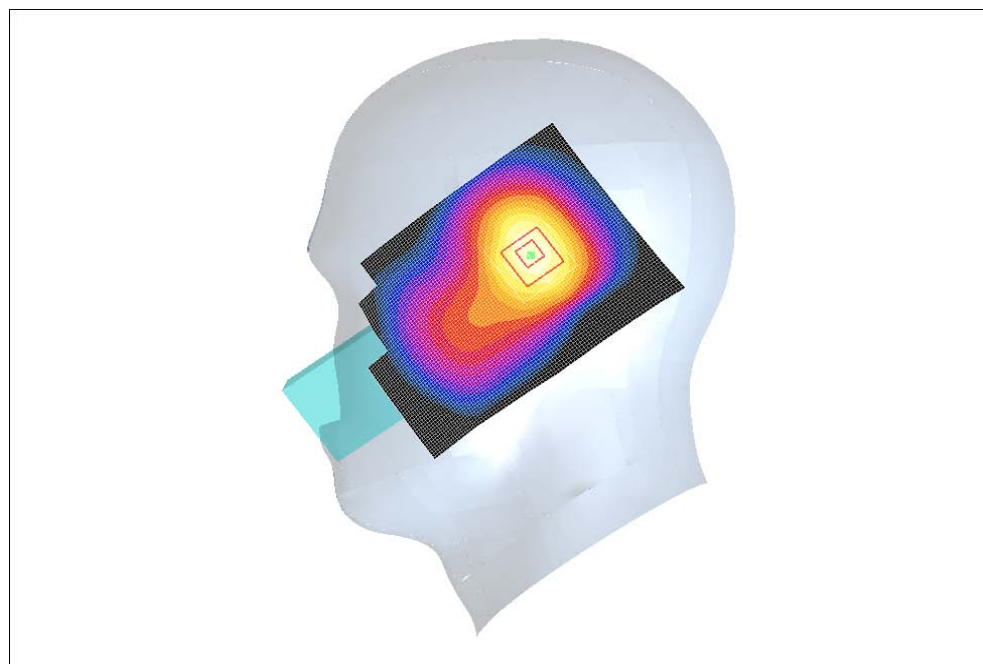
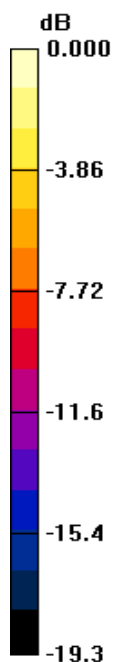
.43Zoom Scan (5x5x7)/Cube 0: Measurement grid: dx=5mm, dy=5mm, dz=5mm

Reference Value = 16.3V/m; Power Drift = -0.028dB

Peak SAR (extrapolated) = 0.635W/kg

SAR(1 g) = 0.382mW/g; SAR(10 g) = 0.210mW/g

Maximum value of SAR (measured) = 0.434mW/g



0 dB = 0.434mW/g

LG Electronics Inc.

DUT: KC550d ;Type: Cellular/ PCS GSM Phone; Serial:#1

Communication System: PCS 1900; Frequency: 1880.00 MHz;Duty Cycle: 1:8.3

Medium: Head 1880.00 MHz;(σ = 1.41 mho/m; ε_r = 41.2; ρ = 1000 kg/m³)

Phantom section: Right Section

Test Date: 07/22/2008;Ambient Temp: 22. 9°C;Tissue Temp: 21.8°C

Probe: ET3DV6 - SN1715; ConvF(5.14, 5.14, 5.14); Calibrated: 2007-09-26

Sensor-Surface: 4mm (Mechanical Surface Detection)

Electronics: DAE4 Sn534; Calibrated: 2007-09-24

Phantom: SAM 1800; Type: SAM 4.0; Serial:TP-1244

Measurement SW: DASY4, V4.7 Build 55; Postprocessing SW: SEMCAD, V1.8 Build 171

Right Head Tilt, Ch.661, Slider Up, Fixed Ant., Standard Battery

Area Scan (61x61x1): Measurement grid: dx=15mm, dy=15mm

Maximum value of SAR (interpolated) = 0.140mW/g

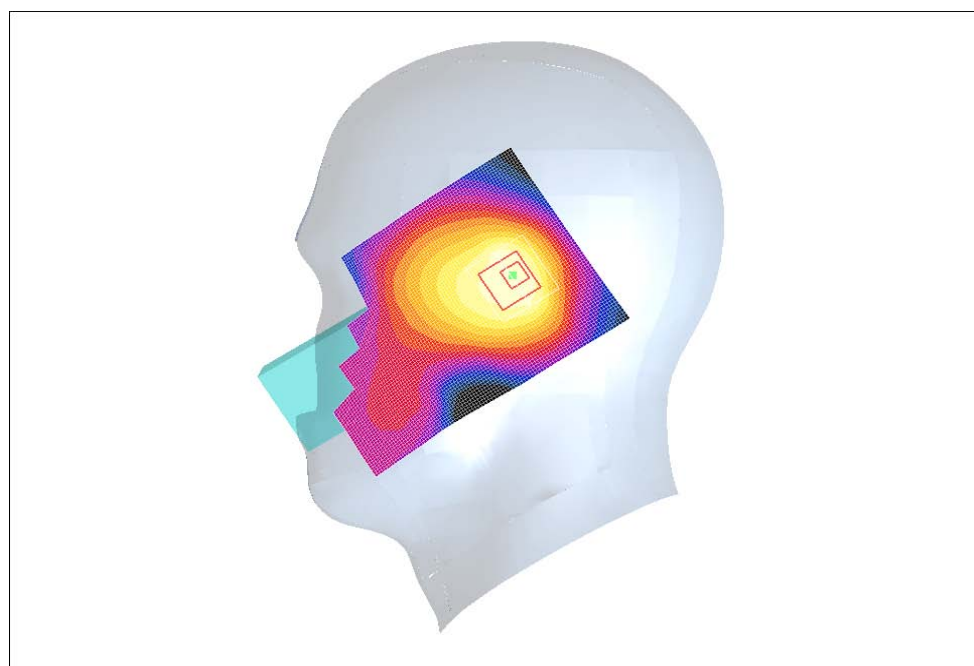
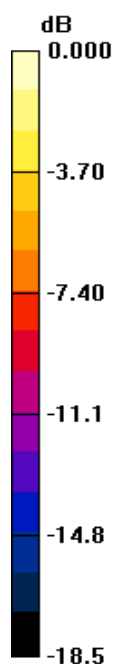
.43Zoom Scan (5x5x7)/Cube 0: Measurement grid: dx=5mm, dy=5mm, dz=5mm

Reference Value = 10.0V/m; Power Drift = -0.098dB

Peak SAR (extrapolated) = 0.170W/kg

SAR(1 g) = 0.115mW/g; SAR(10 g) = 0.071mW/g

Maximum value of SAR (measured) = 0.123mW/g



0 dB = 0.123mW/g

LG Electronics Inc.

DUT: KC550d ;Type: Cellular/ PCS GSM Phone; Serial:#1

Communication System: PCS 1900; Frequency: 1880.00 MHz;Duty Cycle: 1:8.3

Medium: Head 1880.00 MHz;(σ = 1.41 mho/m; ε_r = 41.2; ρ = 1000 kg/m³)

Phantom section: Left Section

Test Date: 07/22/2008;Ambient Temp: 22. 9°C;Tissue Temp: 21.8°C

Probe: ET3DV6 - SN1715; ConvF(5.14, 5.14, 5.14); Calibrated: 2007-09-26

Sensor-Surface: 4mm (Mechanical Surface Detection)

Electronics: DAE4 Sn534; Calibrated: 2007-09-24

Phantom: SAM 1800; Type: SAM 4.0; Serial:TP-1244

Measurement SW: DASY4, V4.7 Build 55; Postprocessing SW: SEMCAD, V1.8 Build 171

Left Head Touch, Ch.661, Slider Down, Fixed Ant., Standard Battery

Area Scan (61x61x1): Measurement grid: dx=15mm, dy=15mm

Maximum value of SAR (interpolated) = 0.286mW/g

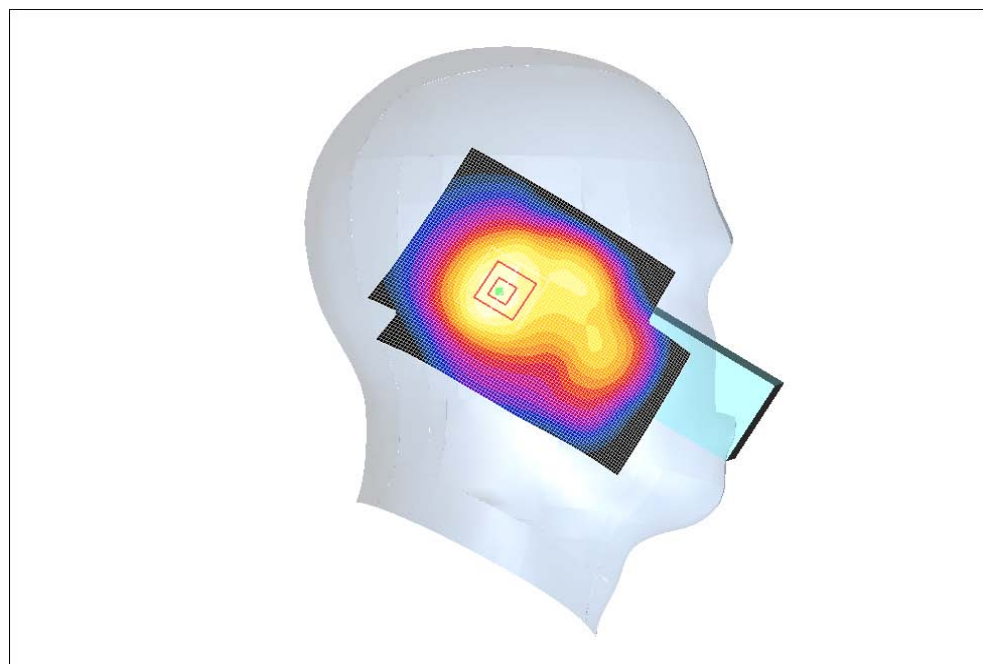
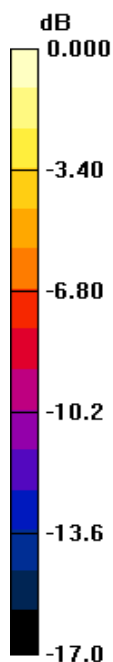
Zoom Scan (5x5x7)/Cube 0: Measurement grid: dx=5mm, dy=5mm, dz=5mm

Reference Value = 14.7V/m; Power Drift = -0.016dB

Peak SAR (extrapolated) = 0.407W/kg

SAR(1 g) = 0.258mW/g; SAR(10 g) = 0.153mW/g

Maximum value of SAR (measured) = 0.286mW/g



0 dB = 0.286mW/g

LG Electronics Inc.

DUT: KC550d ;Type: Cellular/ PCS GSM Phone; Serial:#1

Communication System: PCS 1900; Frequency: 1880.00 MHz;Duty Cycle: 1:8.3

Medium: Head 1880.00 MHz;($\sigma = 1.41$ mho/m; $\epsilon_r = 41.2$; $\rho = 1000$ kg/m³)

Phantom section: Left Section

Test Date: 07/22/2008;Ambient Temp: 22. 9°C;Tissue Temp: 21.8°C

Probe: ET3DV6 - SN1715; ConvF(5.14, 5.14, 5.14); Calibrated: 2007-09-26

Sensor-Surface: 4mm (Mechanical Surface Detection)

Electronics: DAE4 Sn534; Calibrated: 2007-09-24

Phantom: SAM 1800; Type: SAM 4.0; Serial:TP-1244

Measurement SW: DASY4, V4.7 Build 55; Postprocessing SW: SEMCAD, V1.8 Build 171

Left Head Touch, Ch.661, Slider Up, Fixed Ant., Standard Battery

Area Scan (61x61x1): Measurement grid: dx=15mm, dy=15mm

Maximum value of SAR (interpolated) = 0.135mW/g

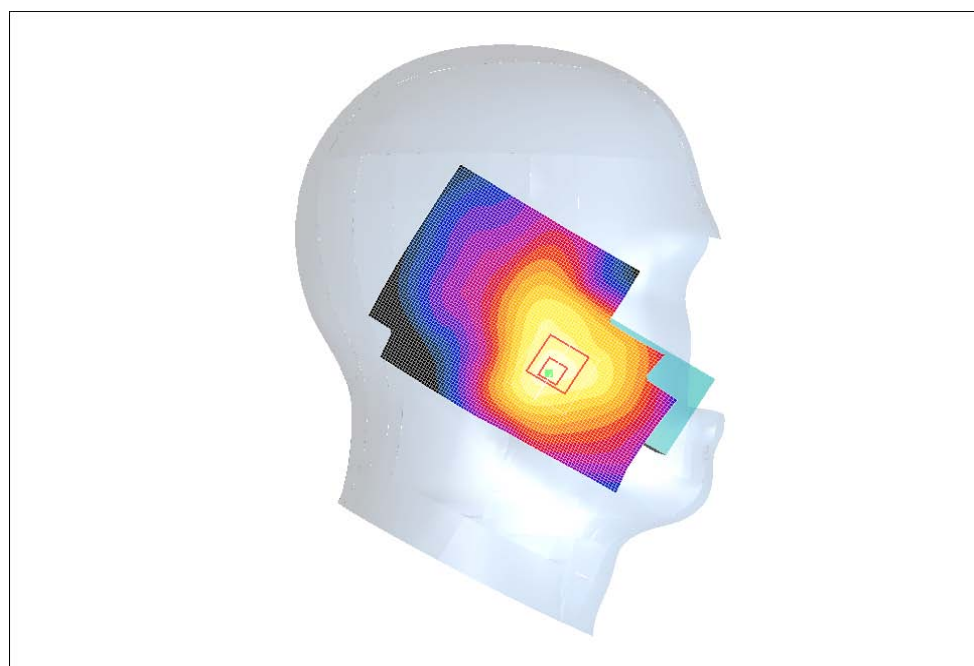
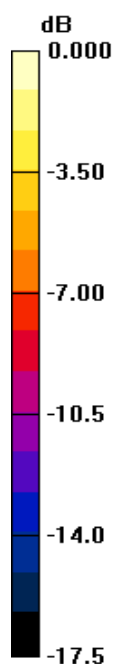
Zoom Scan (5x5x7)/Cube 0: Measurement grid: dx=5mm, dy=5mm, dz=5mm

Reference Value = 3.11V/m; Power Drift = 0.112dB

Peak SAR (extrapolated) = 0.208W/kg

SAR(1 g) = 0.135mW/g; SAR(10 g) = 0.081mW/g

Maximum value of SAR (measured) = 0.153mW/g



0 dB = 0.153mW/g

LG Electronics Inc.

DUT: KC550d ;Type: Cellular/ PCS GSM Phone; Serial:#1

Communication System: PCS 1900; Frequency: 1880.00 MHz;Duty Cycle: 1:8.3

Medium: Head 1880.00 MHz;(σ = 1.41 mho/m; ε_r = 41.2; ρ = 1000 kg/m³)

Phantom section: Left Section

Test Date: 07/22/2008;Ambient Temp: 22. 9°C;Tissue Temp: 21.8°C

Probe: ET3DV6 - SN1715; ConvF(5.14, 5.14, 5.14); Calibrated: 2007-09-26

Sensor-Surface: 4mm (Mechanical Surface Detection)

Electronics: DAE4 Sn534; Calibrated: 2007-09-24

Phantom: SAM 1800; Type: SAM 4.0; Serial:TP-1244

Measurement SW: DASY4, V4.7 Build 55; Postprocessing SW: SEMCAD, V1.8 Build 171

Left Head Tilt, Ch.661, Slider Down, Fixed Ant., Standard Battery

Area Scan (61x61x1): Measurement grid: dx=15mm, dy=15mm

Maximum value of SAR (interpolated) = 0.436mW/g

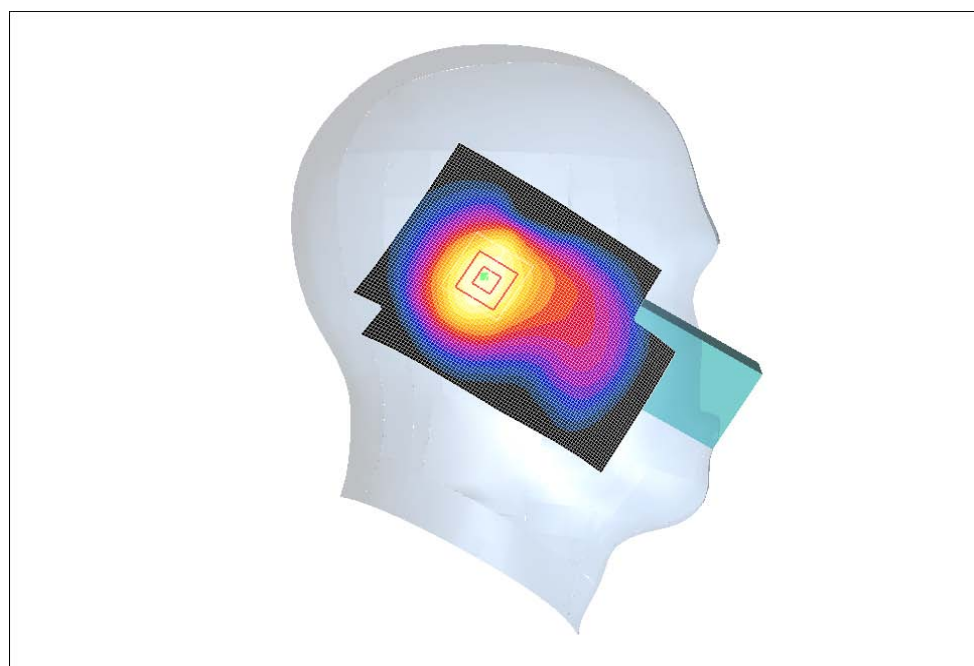
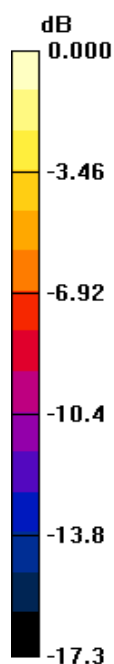
Zoom Scan (5x5x7)/Cube 0: Measurement grid: dx=5mm, dy=5mm, dz=5mm

Reference Value = 17.9V/m; Power Drift = 0.013dB

Peak SAR (extrapolated) = 0.602W/kg

SAR(1 g) = 0.376mW/g; SAR(10 g) = 0.214mW/g

Maximum value of SAR (measured) = 0.411mW/g



0 dB = 0.411mW/g

LG Electronics Inc.

DUT: KC550d ;Type: Cellular/ PCS GSM Phone; Serial:#1

Communication System: PCS 1900; Frequency: 1880.00 MHz;Duty Cycle: 1:8.3

Medium: Head 1880.00 MHz;($\sigma = 1.41$ mho/m; $\epsilon_r = 41.2$; $\rho = 1000$ kg/m³)

Phantom section: Left Section

Test Date: 07/22/2008;Ambient Temp: 22. 9°C;Tissue Temp: 21.8°C

Probe: ET3DV6 - SN1715; ConvF(5.14, 5.14, 5.14); Calibrated: 2007-09-26

Sensor-Surface: 4mm (Mechanical Surface Detection)

Electronics: DAE4 Sn534; Calibrated: 2007-09-24

Phantom: SAM 1800; Type: SAM 4.0; Serial:TP-1244

Measurement SW: DASY4, V4.7 Build 55; Postprocessing SW: SEMCAD, V1.8 Build 171

Left Head Tilt, Ch.661, Slider Up, Fixed Ant., Standard Battery

Area Scan (61x61x1): Measurement grid: dx=15mm, dy=15mm

Maximum value of SAR (interpolated) = 0.127mW/g

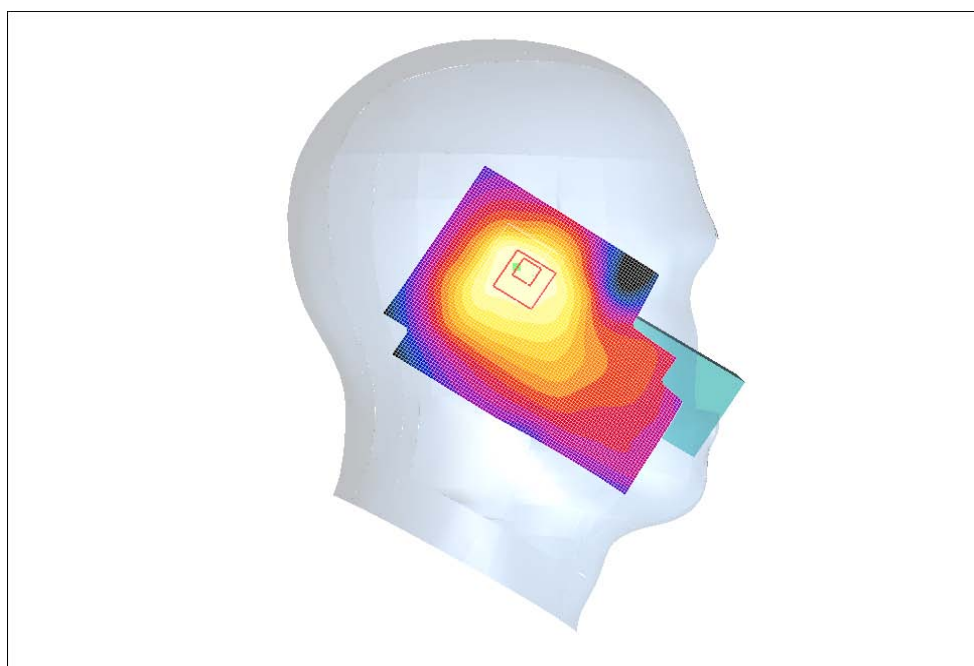
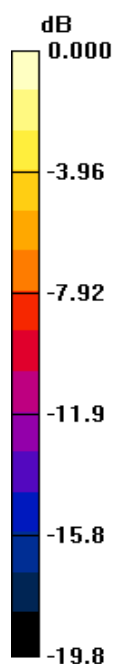
Zoom Scan (5x5x7)/Cube 0: Measurement grid: dx=5mm, dy=5mm, dz=5mm

Reference Value = 7.62V/m; Power Drift = 0.025dB

Peak SAR (extrapolated) = 0.161W/kg

SAR(1 g) = 0.103mW/g; SAR(10 g) = 0.064mW/g

Maximum value of SAR (measured) = 0.111mW/g



0 dB = 0.111mW/g

LG Electronics Inc.

DUT: KC550d ;Type: Cellular/ PCS GSM Phone; Serial:#1

Communication System: GPRS 850; Frequency: 836.60 MHz;Duty Cycle: 1:2.075

Medium: Body 836.60 MHz;(σ = 0.96 mho/m; ε_r = 55.2; ρ = 1000 kg/m³)

Phantom section: Flat Section

Test Date: 07/21/2008;Ambient Temp: 22. 9°C;Tissue Temp: 21.8°C

Probe: ET3DV6 - SN1715; ConvF(6.16, 6.16, 6.16); Calibrated: 2007-09-26

Sensor-Surface: 4mm (Mechanical Surface Detection)

Electronics: DAE4 Sn534; Calibrated: 2007-09-24

Phantom: SAM 835; Type: SAM 4.0; Serial:TP-1066

Measurement SW: DASY4, V4.7 Build 55; Post processing SW: SEMCAD, V1.8 Build 171

Flat Touch, Ch.190, Front, Slider Down, Fixed Ant., Standard Battery

Area Scan (61x61x1): Measurement grid: dx=15mm, dy=15mm

Maximum value of SAR (interpolated) = 0.083mW/g

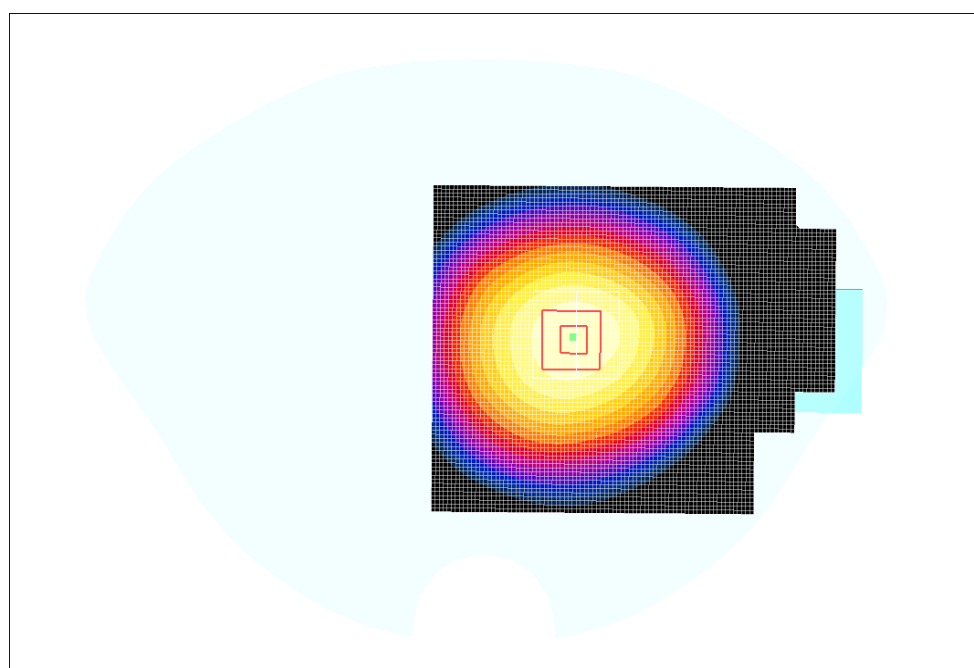
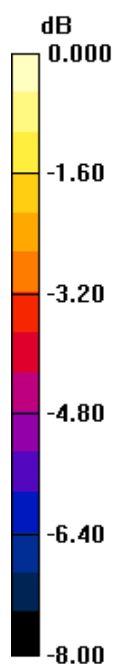
Zoom Scan (5x5x7)/Cube 0: Measurement grid: dx=5mm, dy=5mm, dz=5mm

Reference Value = 8.14V/m; Power Drift = 0.161dB

Peak SAR (extrapolated) = 0.098W/kg

SAR(1 g) = 0.081mW/g; SAR(10 g) = 0.061mW/g

Maximum value of SAR (measured) = 0.085mW/g



0 dB = 0.085mW/g

LG Electronics Inc.

DUT: KC550d ;Type: Cellular/ PCS GSM Phone; Serial:#1

Communication System: GPRS 850; Frequency: 836.60 MHz;Duty Cycle: 1:2.075

Medium: Body 836.60 MHz;(σ = 0.96 mho/m; ε_r = 55.2; ρ = 1000 kg/m³)

Phantom section: Flat Section

Test Date: 07/21/2008;Ambient Temp: 22. 9°C;Tissue Temp: 21.8°C

Probe: ET3DV6 - SN1715; ConvF(6.16, 6.16, 6.16); Calibrated: 2007-09-26

Sensor-Surface: 4mm (Mechanical Surface Detection)

Electronics: DAE4 Sn534; Calibrated: 2007-09-24

Phantom: SAM 835; Type: SAM 4.0; Serial:TP-1066

Measurement SW: DASY4, V4.7 Build 55; Post processing SW: SEMCAD, V1.8 Build 171

Flat Touch, Ch.190, Front, Slider Up, Fixed Ant., Standard Battery

Area Scan (61x61x1): Measurement grid: dx=15mm, dy=15mm

Maximum value of SAR (interpolated) = 0.202mW/g

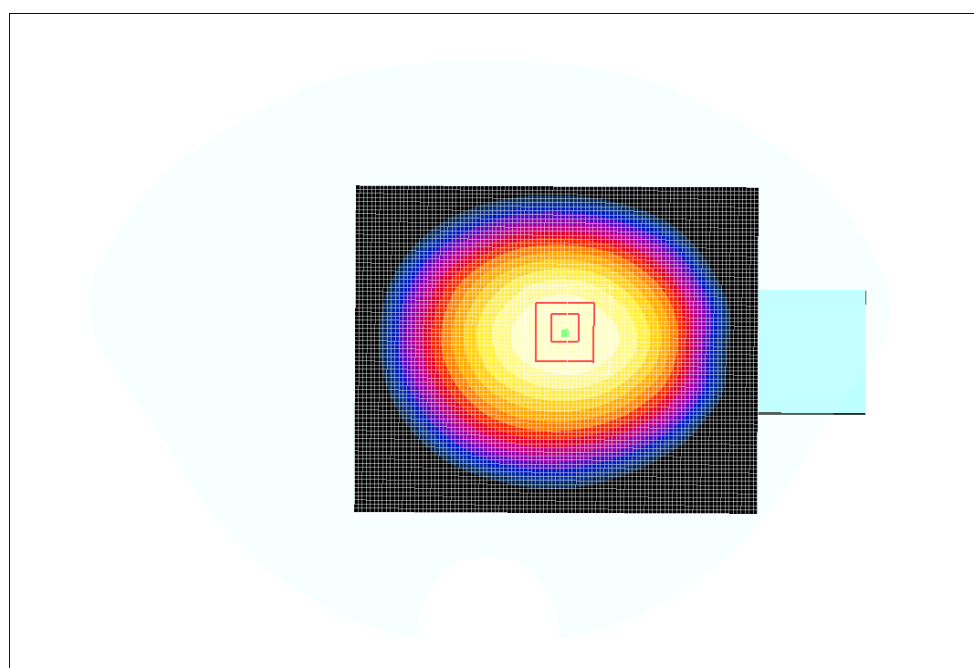
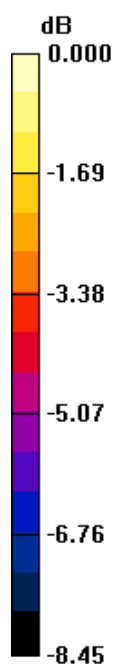
Zoom Scan (5x5x7)/Cube 0: Measurement grid: dx=5mm, dy=5mm, dz=5mm

Reference Value = 13.3V/m; Power Drift = 0.324dB

Peak SAR (extrapolated) = 0.226W/kg

SAR(1 g) = 0.187mW/g; SAR(10 g) = 0.141mW/g

Maximum value of SAR (measured) = 0.197mW/g



0 dB = 0.197mW/g

LG Electronics Inc.

DUT: KC550d ;Type: Cellular/ PCS GSM Phone; Serial:#1

Communication System: GPRS 850; Frequency: 836.60 MHz;Duty Cycle: 1:2.075

Medium: Body 836.60 MHz;(σ = 0.96 mho/m; ε_r = 55.2; ρ = 1000 kg/m³)

Phantom section: Flat Section

Test Date: 07/21/2008;Ambient Temp: 22. 9°C;Tissue Temp: 21.8°C

Probe: ET3DV6 - SN1715; ConvF(6.16, 6.16, 6.16); Calibrated: 2007-09-26

Sensor-Surface: 4mm (Mechanical Surface Detection)

Electronics: DAE4 Sn534; Calibrated: 2007-09-24

Phantom: SAM 835; Type: SAM 4.0; Serial:TP-1066

Measurement SW: DASY4, V4.7 Build 55; Post processing SW: SEMCAD, V1.8 Build 171

Flat Touch, Ch.190, Rear, Slider Down, Fixed Ant., Standard Battery

Area Scan (61x61x1): Measurement grid: dx=15mm, dy=15mm

Maximum value of SAR (interpolated) = 0.303mW/g

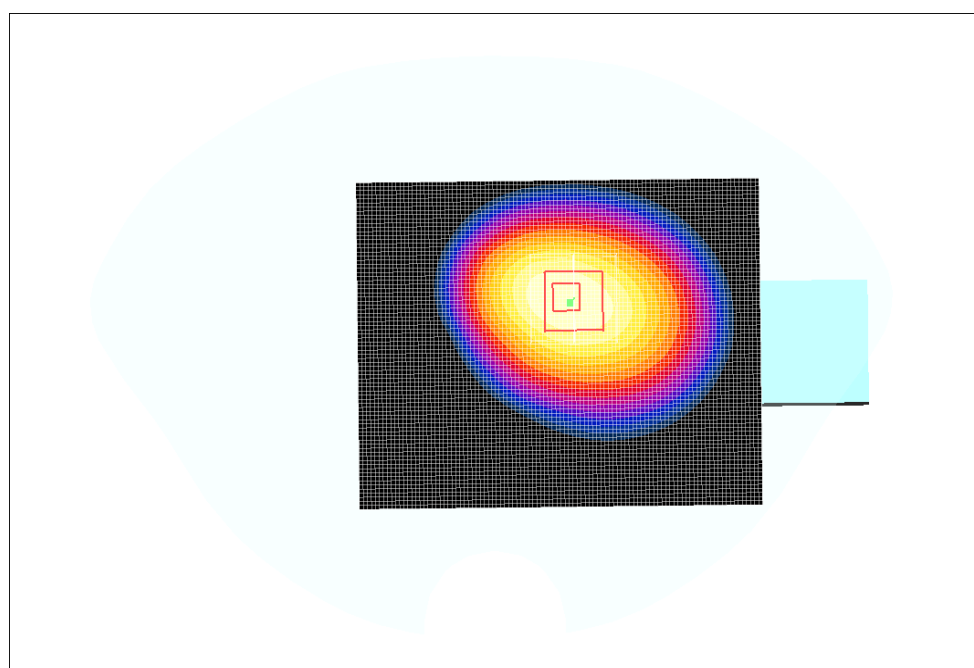
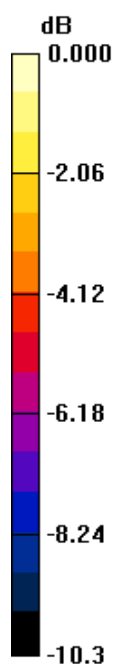
Zoom Scan (5x5x7)/Cube 0: Measurement grid: dx=5mm, dy=5mm, dz=5mm

Reference Value = 10.4V/m; Power Drift = -0.138dB

Peak SAR (extrapolated) = 0.373W/kg

SAR(1 g) = 0.281mW/g; SAR(10 g) = 0.198mW/g

Maximum value of SAR (measured) = 0.299mW/g



0 dB = 0.299mW/g

LG Electronics Inc.

DUT: KC550d ;Type: Cellular/ PCS GSM Phone; Serial:#1

Communication System: GPRS 850; Frequency: 836.60 MHz;Duty Cycle: 1:2.075

Medium: Body 836.60 MHz;(σ = 0.96 mho/m; ε_r = 55.2; ρ = 1000 kg/m³)

Phantom section: Flat Section

Test Date: 07/21/2008;Ambient Temp: 22. 9°C;Tissue Temp: 21.8°C

Probe: ET3DV6 - SN1715; ConvF(6.16, 6.16, 6.16); Calibrated: 2007-09-26

Sensor-Surface: 4mm (Mechanical Surface Detection)

Electronics: DAE4 Sn534; Calibrated: 2007-09-24

Phantom: SAM 835; Type: SAM 4.0; Serial:TP-1066

Measurement SW: DASY4, V4.7 Build 55; Post processing SW: SEMCAD, V1.8 Build 171

Flat Touch, Ch.190, Rear, Slider Up, Fixed Ant., Standard Battery

Area Scan (61x61x1): Measurement grid: dx=15mm, dy=15mm

Maximum value of SAR (interpolated) = 0.290mW/g

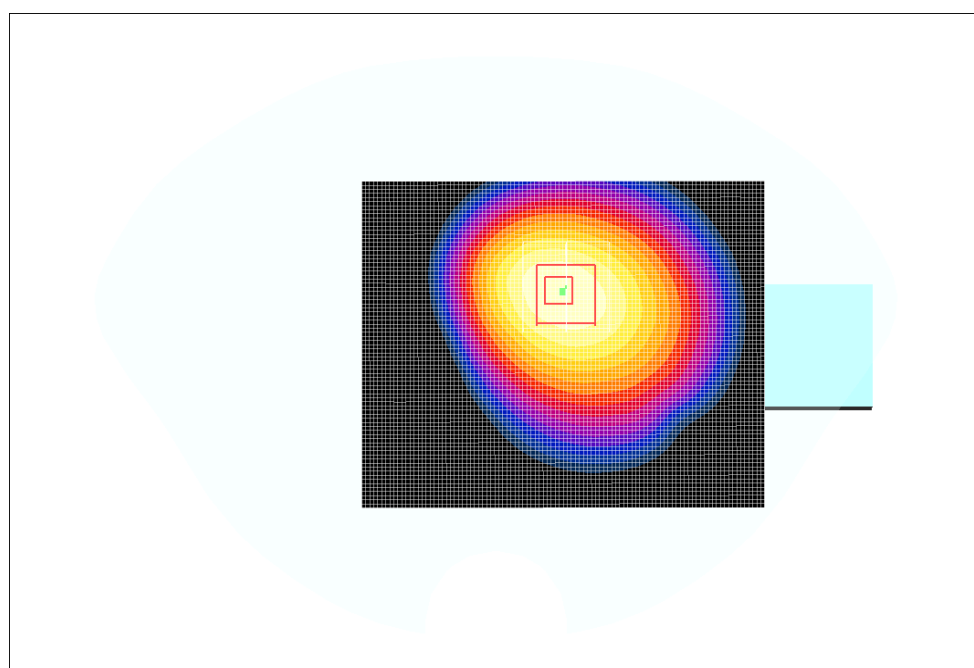
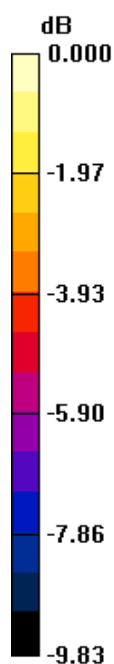
Zoom Scan (5x5x7)/Cube 0: Measurement grid: dx=5mm, dy=5mm, dz=5mm

Reference Value = 11.6V/m; Power Drift = -0.038dB

Peak SAR (extrapolated) = 0.368W/kg

SAR(1 g) = 0.279mW/g; SAR(10 g) = 0.198mW/g

Maximum value of SAR (measured) = 0.294mW/g



0 dB = 0.294mW/g

LG Electronics Inc.

DUT: KC550d ;Type: Cellular/ PCS GSM Phone; Serial:#1

Communication System: GPRS 1900; Frequency: 1880.00 MHz;Duty Cycle: 1:2.075

Medium: Body 1880.00 MHz;(σ = 1.5 mho/m; ε_r = 53; ρ = 1000 kg/m³)

Phantom section: Flat Section

Test Date: 07/22/2008;Ambient Temp: 22. 9°C;Tissue Temp: 21.8°C

Probe: ET3DV6 - SN1715; ConvF(4.72, 4.72, 4.72); Calibrated: 2007-09-26

Sensor-Surface: 4mm (Mechanical Surface Detection)

Electronics: DAE4 Sn534; Calibrated: 2007-09-24

Phantom: SAM 1800; Type: SAM 4.0; Serial:TP-1244

Measurement SW: DASY4, V4.7 Build 55; Post processing SW: SEMCAD, V1.8 Build 171

Flat Touch, Ch.661, Front, Slider Down, Fixed Ant., Standard Battery

Area Scan (61x61x1): Measurement grid: dx=15mm, dy=15mm

Maximum value of SAR (interpolated) = 0.203mW/g

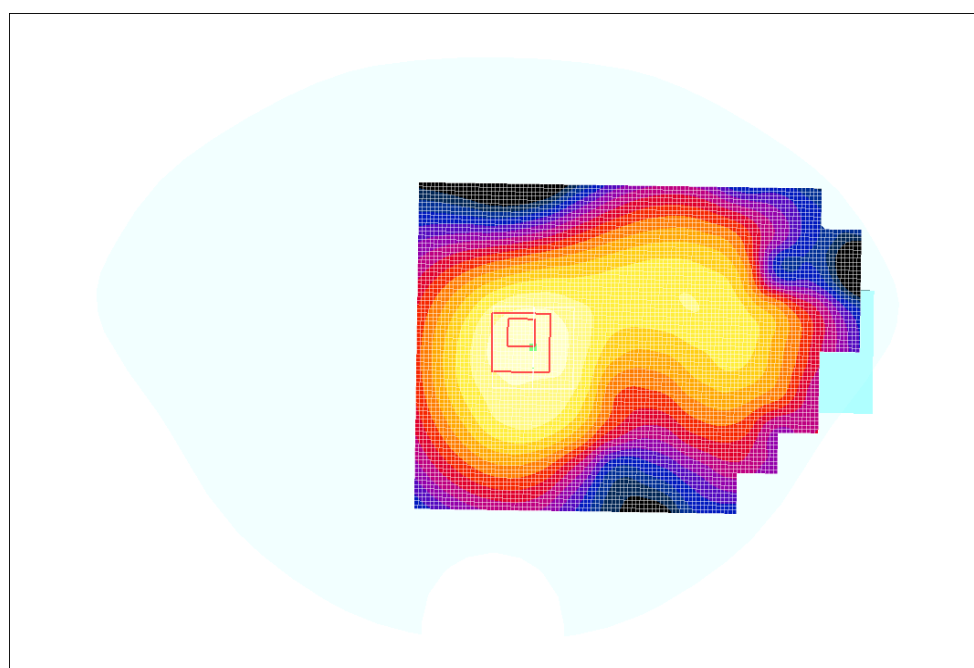
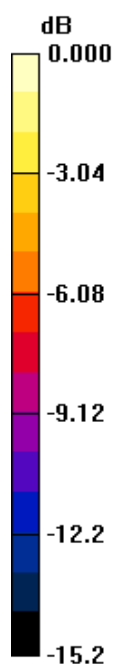
Zoom Scan (5x5x7)/Cube 0: Measurement grid: dx=5mm, dy=5mm, dz=5mm

Reference Value = 12.1V/m; Power Drift = -0.306dB

Peak SAR (extrapolated) = 0.286W/kg

SAR(1 g) = 0.167mW/g; SAR(10 g) = 0.106mW/g

Maximum value of SAR (measured) = 0.191mW/g



0 dB = 0.191mW/g

LG Electronics Inc.

DUT: KC550d ;Type: Cellular/ PCS GSM Phone; Serial:#1

Communication System: GPRS 1900; Frequency: 1880.00 MHz;Duty Cycle: 1:2.075

Medium: Body 1880.00 MHz;(σ = 1.5 mho/m; ε_r = 53; ρ = 1000 kg/m³)

Phantom section: Flat Section

Test Date: 07/22/2008;Ambient Temp: 22. 9°C;Tissue Temp: 21.8°C

Probe: ET3DV6 - SN1715; ConvF(4.72, 4.72, 4.72); Calibrated: 2007-09-26

Sensor-Surface: 4mm (Mechanical Surface Detection)

Electronics: DAE4 Sn534; Calibrated: 2007-09-24

Phantom: SAM 1800; Type: SAM 4.0; Serial:TP-1244

Measurement SW: DASY4, V4.7 Build 55; Post processing SW: SEMCAD, V1.8 Build 171

Flat Touch, Ch.661, Front, Slider Up, Fixed Ant., Standard Battery

Area Scan (61x61x1): Measurement grid: dx=15mm, dy=15mm

Maximum value of SAR (interpolated) = 0.154mW/g

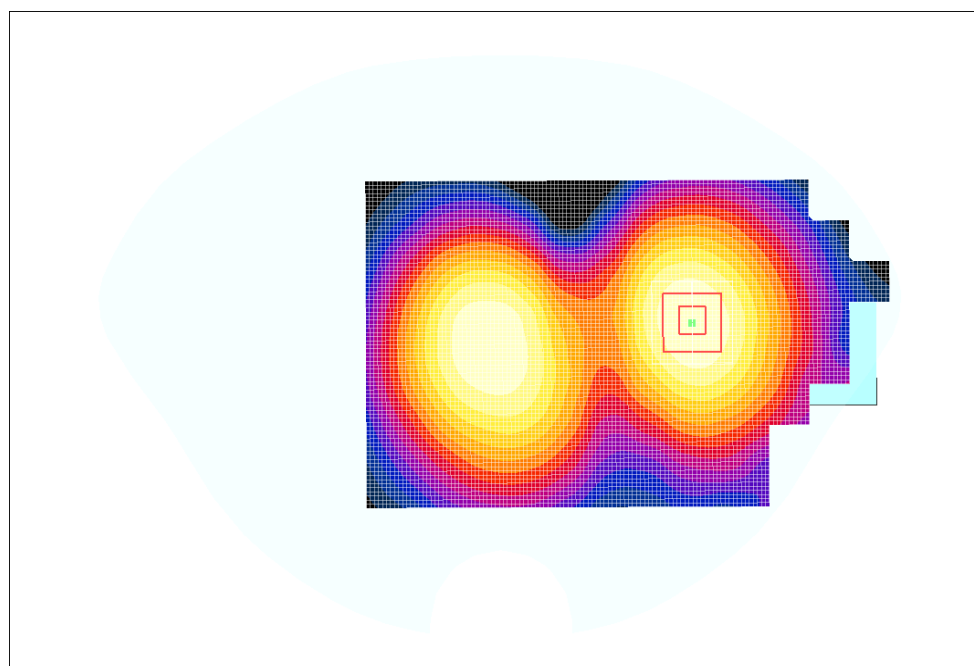
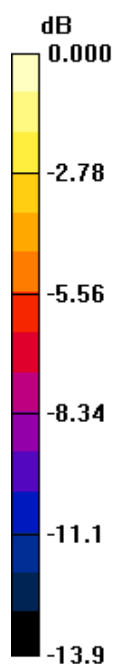
Zoom Scan (5x5x7)/Cube 0: Measurement grid: dx=5mm, dy=5mm, dz=5mm

Reference Value = 10.8V/m; Power Drift = -0.005dB

Peak SAR (extrapolated) = 0.202W/kg

SAR(1 g) = 0.139mW/g; SAR(10 g) = 0.089mW/g

Maximum value of SAR (measured) = 0.150mW/g



0 dB = 0.150mW/g

LG Electronics Inc.

DUT: KC550d ;Type: Cellular/ PCS GSM Phone; Serial:#1

Communication System: GPRS 1900; Frequency: 1880.00 MHz;Duty Cycle: 1:2.075

Medium: Body 1880.00 MHz;(σ = 1.5 mho/m; ε_r = 53; ρ = 1000 kg/m³)

Phantom section: Flat Section

Test Date: 07/22/2008;Ambient Temp: 22. 9°C;Tissue Temp: 21.8°C

Probe: ET3DV6 - SN1715; ConvF(4.72, 4.72, 4.72); Calibrated: 2007-09-26

Sensor-Surface: 4mm (Mechanical Surface Detection)

Electronics: DAE4 Sn534; Calibrated: 2007-09-24

Phantom: SAM 1800; Type: SAM 4.0; Serial:TP-1244

Measurement SW: DASY4, V4.7 Build 55; Post processing SW: SEMCAD, V1.8 Build 171

Flat Touch, Ch.661, Rear, Slider Down, Fixed Ant., Standard Battery

Area Scan (61x61x1): Measurement grid: dx=15mm, dy=15mm

Maximum value of SAR (interpolated) = 0.449mW/g

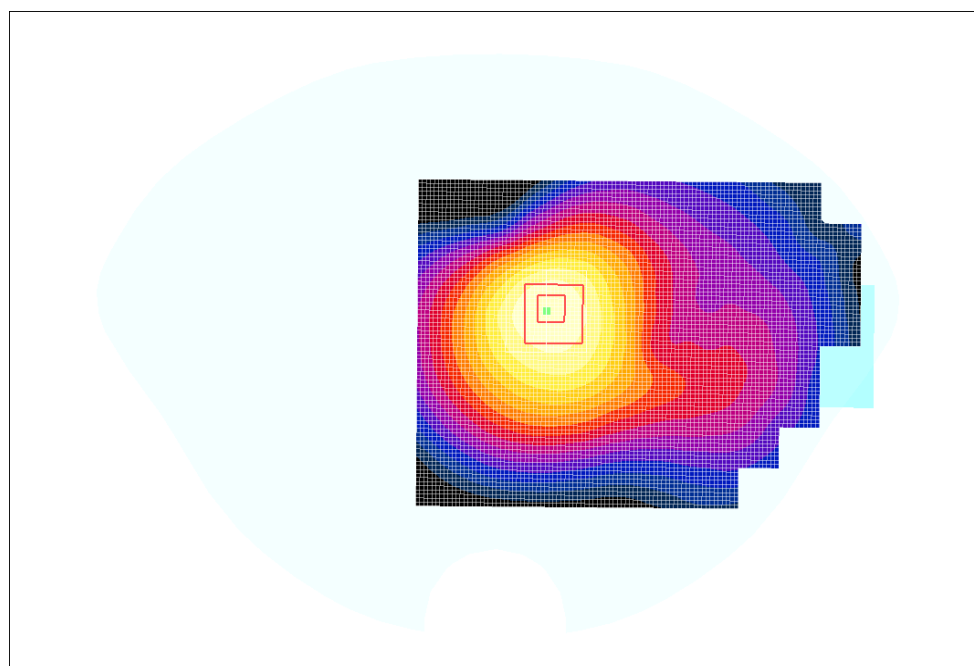
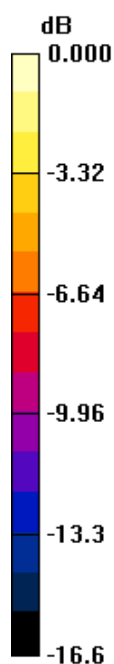
Zoom Scan (5x5x7)/Cube 0: Measurement grid: dx=5mm, dy=5mm, dz=5mm

Reference Value = 13.7V/m; Power Drift = -0.178dB

Peak SAR (extrapolated) = 0.613W/kg

SAR(1 g) = 0.393mW/g; SAR(10 g) = 0.237mW/g

Maximum value of SAR (measured) = 0.427mW/g



0 dB = 0.427mW/g

LG Electronics Inc.

DUT: KC550d ;Type: Cellular/ PCS GSM Phone; Serial:#1

Communication System: GPRS 1900; Frequency: 1880.00 MHz;Duty Cycle: 1:2.075

Medium: Body 1880.00 MHz;(σ = 1.5 mho/m; ε_r = 53; ρ = 1000 kg/m³)

Phantom section: Flat Section

Test Date: 07/22/2008;Ambient Temp: 22. 9°C;Tissue Temp: 21.8°C

Probe: ET3DV6 - SN1715; ConvF(4.72, 4.72, 4.72); Calibrated: 2007-09-26

Sensor-Surface: 4mm (Mechanical Surface Detection)

Electronics: DAE4 Sn534; Calibrated: 2007-09-24

Phantom: SAM 1800; Type: SAM 4.0; Serial:TP-1244

Measurement SW: DASY4, V4.7 Build 55; Post processing SW: SEMCAD, V1.8 Build 171

Flat Touch, Ch.661, Rear, Slider Up, Fixed Ant., Standard Battery

Area Scan (61x61x1): Measurement grid: dx=15mm, dy=15mm

Maximum value of SAR (interpolated) = 0.297mW/g

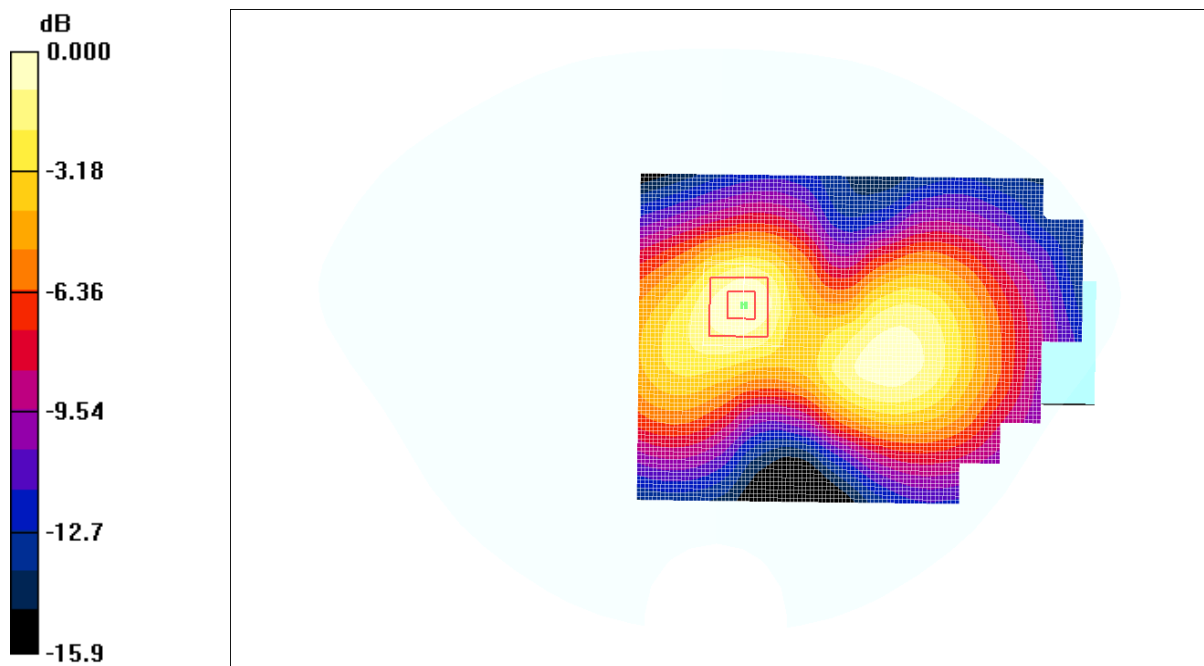
Zoom Scan (5x5x7)/Cube 0: Measurement grid: dx=5mm, dy=5mm, dz=5mm

Reference Value = 13.4 V/m; Power Drift = -0.298dB

Peak SAR (extrapolated) = 0.427W/kg

SAR(1 g) = 0.265mW/g; SAR(10 g) = 0.156mW/g

Maximum value of SAR (measured) = 0.290mW/g



0 dB = 0.290mW/g

LG Electronics Inc.

DUT: KC550d ;Type: Cellular/ PCS GSM Phone; Serial:#1

Communication System: GSM 850; Frequency: 836.60 MHz; Duty Cycle: 1:8.3

Medium: Head 836.60 MHz; ($\sigma = 0.896$ mho/m; $\epsilon_r = 41$; $\rho = 1000$ kg/m³)

Phantom section: Left Section

Test Date: 07/21/2008; Ambient Temp: 22.9°C; Tissue Temp: 21.8°C

Probe: ET3DV6 - SN1715; ConvF(6.4, 6.4, 6.4); Calibrated: 2007-09-26

Sensor-Surface: 4mm (Mechanical Surface Detection)

Electronics: DAE4 Sn534; Calibrated: 2007-09-24

Phantom: SAM 835; Type: SAM 4.0; Serial:TP-1066

Measurement SW: DASY4, V4.7 Build 55; Postprocessing SW: SEMCAD, V1.8 Build 171

Left Head Touch, Ch.190, Slider Up, Fixed Ant., Standard Battery

Area Scan (61x61x1): Measurement grid: dx=15mm, dy=15mm

Maximum value of SAR (interpolated) = 0.281mW/g

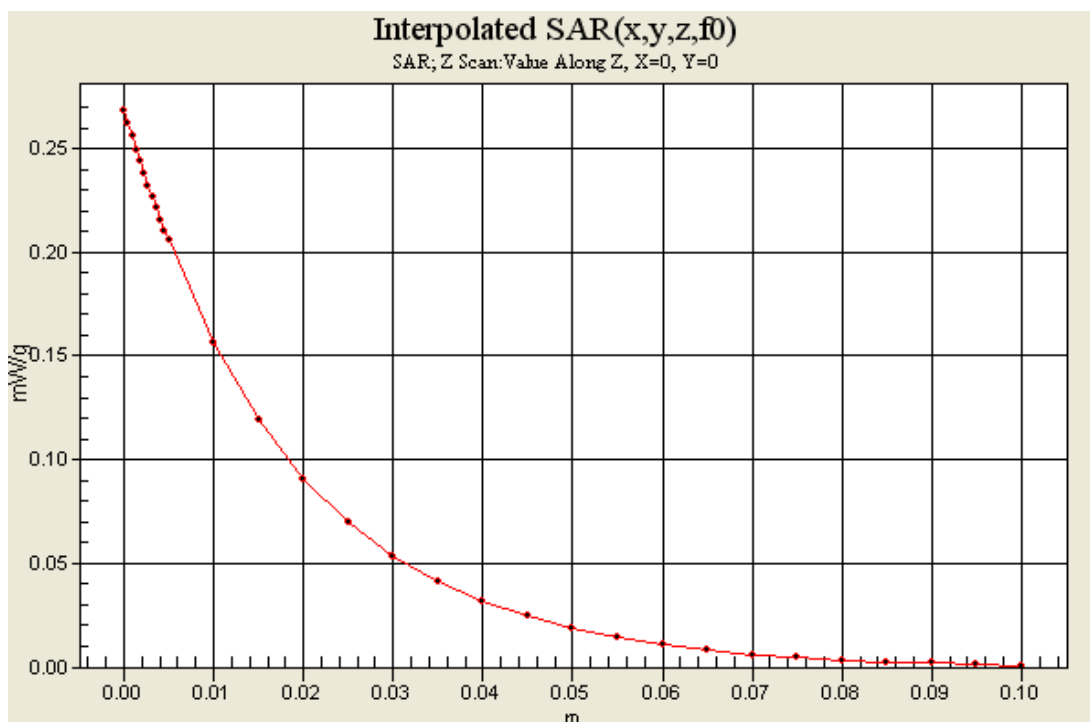
Zoom Scan (5x5x7)/Cube 0: Measurement grid: dx=5mm, dy=5mm, dz=5mm

Reference Value = 6.42V/m; Power Drift = -0.137dB

Peak SAR (extrapolated) = 0.355W/kg

SAR(1 g) = 0.264mW/g; SAR(10 g) = 0.189mW/g

Maximum value of SAR (measured) = 0.281mW/g



0 dB = 0.281mW/g

LG Electronics Inc.

DUT: KC550d ;Type: Cellular/ PCS GSM Phone; Serial:#1

Communication System: PCS 1900; Frequency: 1880.00 MHz;Duty Cycle: 1:8.3

Medium: Head 1880.00 MHz;($\sigma = 1.41$ mho/m; $\epsilon_r = 41.2$; $\rho = 1000$ kg/m³)

Phantom section: Right Section

Test Date: 07/22/2008;Ambient Temp: 22. 9°C;Tissue Temp: 21.8°C

Probe: ET3DV6 - SN1715; ConvF(5.14, 5.14, 5.14); Calibrated: 2007-09-26

Sensor-Surface: 4mm (Mechanical Surface Detection)

Electronics: DAE4 Sn534; Calibrated: 2007-09-24

Phantom: SAM 1800; Type: SAM 4.0; Serial:TP-1244

Measurement SW: DASY4, V4.7 Build 55; Postprocessing SW: SEMCAD, V1.8 Build 171

Right Head Tilt, Ch.661, Slider Down, Fixed Ant., Standard Battery

Area Scan (61x61x1): Measurement grid: dx=15mm, dy=15mm

Maximum value of SAR (interpolated) = 0.430mW/g

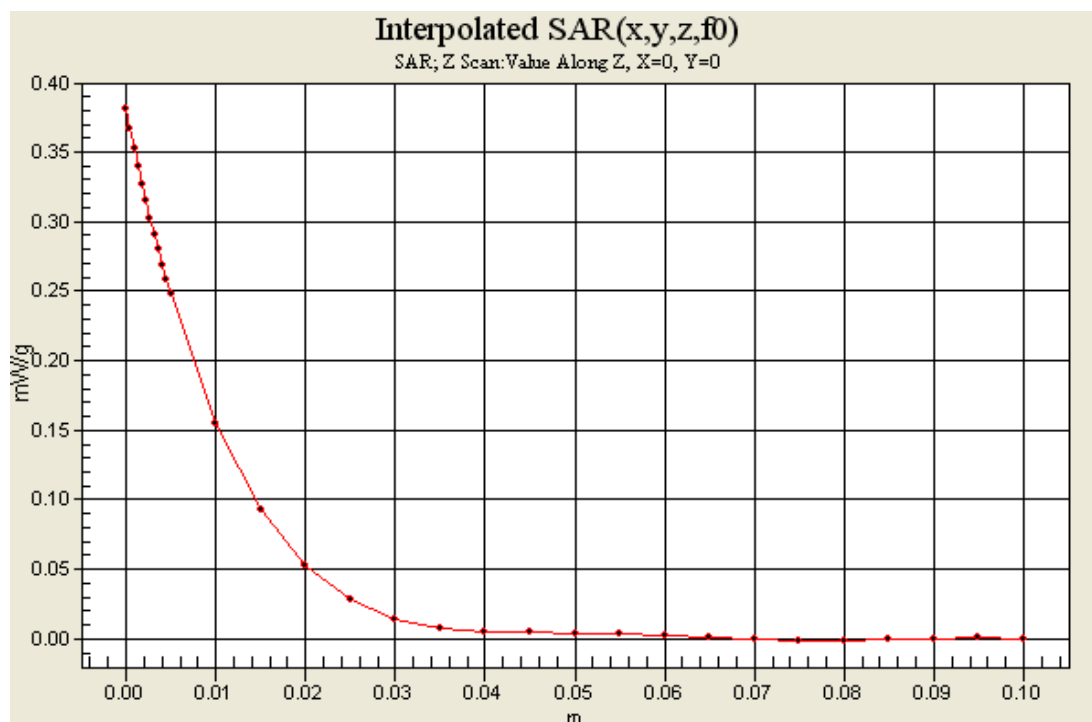
.43Zoom Scan (5x5x7)/Cube 0: Measurement grid: dx=5mm, dy=5mm, dz=5mm

Reference Value = 16.3V/m; Power Drift = -0.028dB

Peak SAR (extrapolated) = 0.635W/kg

SAR(1 g) = 0.382mW/g; SAR(10 g) = 0.210mW/g

Maximum value of SAR (measured) = 0.434mW/g



0 dB = 0.434mW/g

LG Electronics Inc.

DUT: KC550d ;Type: Cellular/ PCS GSM Phone; Serial:#1

Communication System: GPRS 850; Frequency: 836.60 MHz;Duty Cycle: 1:2.075

Medium: Body 836.60 MHz;($\sigma = 0.96$ mho/m; $\epsilon_r = 55.2$; $\rho = 1000$ kg/m³)

Phantom section: Flat Section

Test Date: 07/21/2008;Ambient Temp: 22. 9°C;Tissue Temp: 21.8°C

Probe: ET3DV6 - SN1715; ConvF(6.16, 6.16, 6.16); Calibrated: 2007-09-26

Sensor-Surface: 4mm (Mechanical Surface Detection)

Electronics: DAE4 Sn534; Calibrated: 2007-09-24

Phantom: SAM 835; Type: SAM 4.0; Serial:TP-1066

Measurement SW: DASY4, V4.7 Build 55; Post processing SW: SEMCAD, V1.8 Build 171

Flat Touch, Ch.190, Rear, Slider Down, Fixed Ant., Standard Battery

Area Scan (61x61x1): Measurement grid: dx=15mm, dy=15mm

Maximum value of SAR (interpolated) = 0.303mW/g

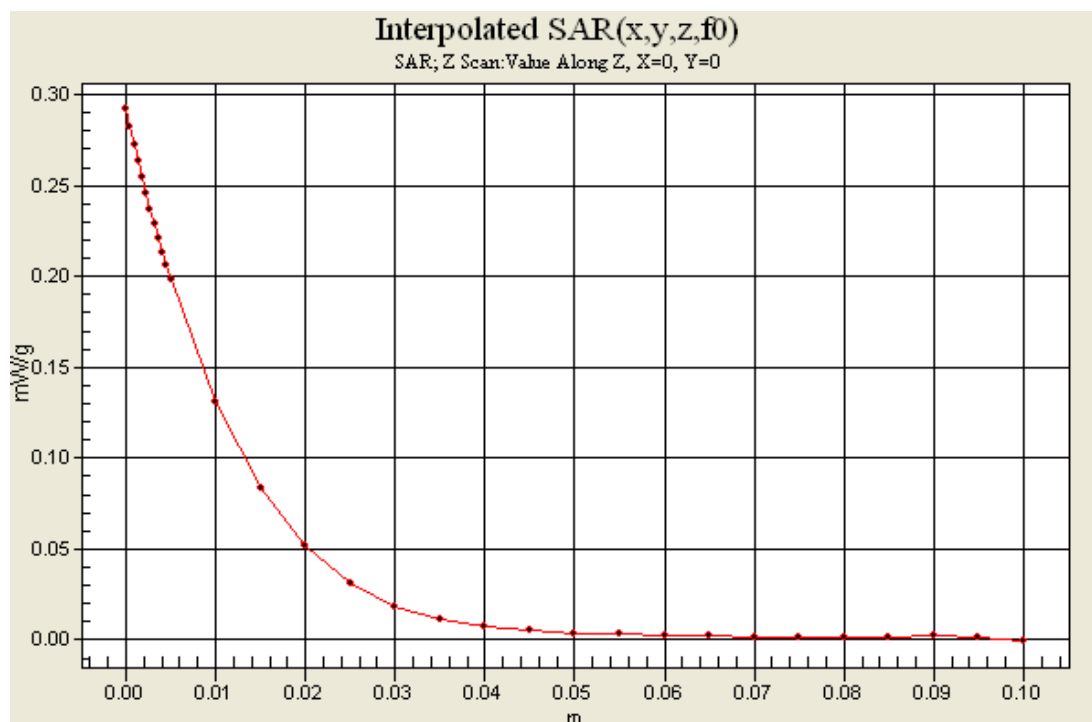
Zoom Scan (5x5x7)/Cube 0: Measurement grid: dx=5mm, dy=5mm, dz=5mm

Reference Value = 10.4V/m; Power Drift = -0.138dB

Peak SAR (extrapolated) = 0.373W/kg

SAR(1 g) = 0.281mW/g; SAR(10 g) = 0.198mW/g

Maximum value of SAR (measured) = 0.299mW/g



0 dB = 0.299mW/g

LG Electronics Inc.

DUT: KC550d ;Type: Cellular/ PCS GSM Phone; Serial:#1

Communication System: GPRS 1900; Frequency: 1880.00 MHz;Duty Cycle: 1:2.075

Medium: Body 1880.00 MHz;($\sigma = 1.5$ mho/m; $\epsilon_r = 53$; $\rho = 1000$ kg/m³)

Phantom section: Flat Section

Test Date: 07/22/2008;Ambient Temp: 22. 9°C;Tissue Temp: 21.8°C

Probe: ET3DV6 - SN1715; ConvF(4.72, 4.72, 4.72); Calibrated: 2007-09-26

Sensor-Surface: 4mm (Mechanical Surface Detection)

Electronics: DAE4 Sn534; Calibrated: 2007-09-24

Phantom: SAM 1800; Type: SAM 4.0; Serial:TP-1244

Measurement SW: DASY4, V4.7 Build 55; Post processing SW: SEMCAD, V1.8 Build 171

Flat Touch, Ch.661, Rear, Slider Down, Fixed Ant., Standard Battery

Area Scan (61x61x1): Measurement grid: dx=15mm, dy=15mm

Maximum value of SAR (interpolated) = 0.449mW/g

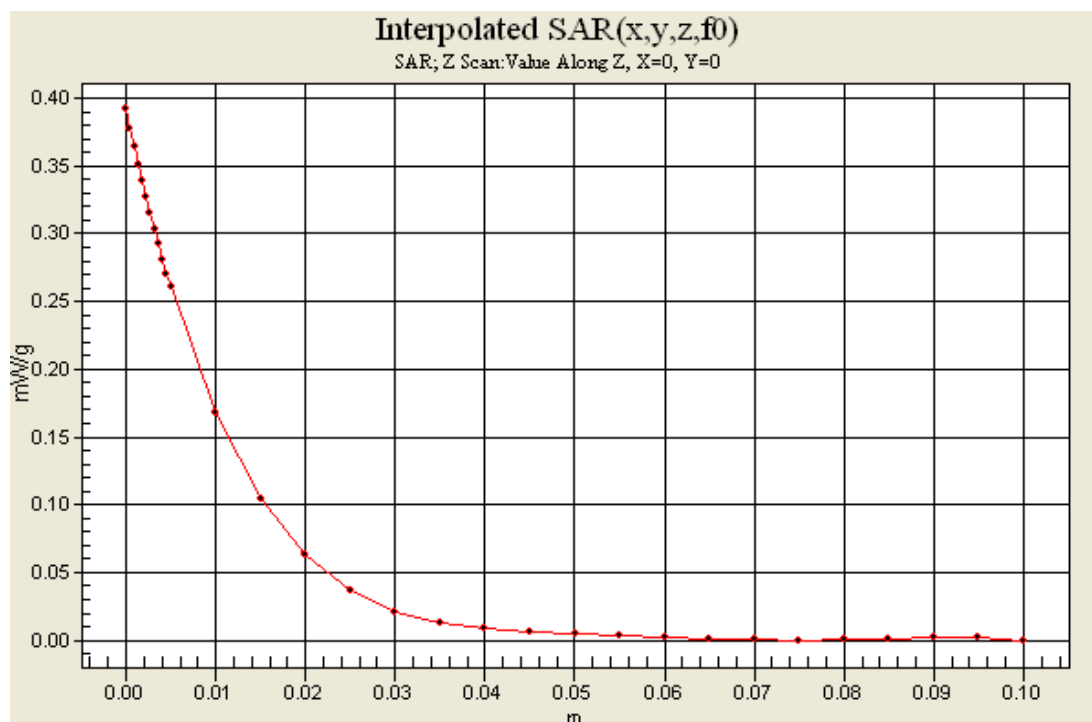
Zoom Scan (5x5x7)/Cube 0: Measurement grid: dx=5mm, dy=5mm, dz=5mm

Reference Value = 13.7V/m; Power Drift = -0.178dB

Peak SAR (extrapolated) = 0.613W/kg

SAR(1 g) = 0.393mW/g; SAR(10 g) = 0.237mW/g

Maximum value of SAR (measured) = 0.427mW/g



0 dB = 0.427mW/g

**Calibration Laboratory of
Schmid & Partner
Engineering AG**
Zeughausstrasse 43, 8004 Zurich, Switzerland



S Schweizerischer Kalibrierdienst
S Service suisse d'étalonnage
C Servizio svizzero di taratura
S Swiss Calibration Service

Accredited by the Swiss Federal Office of Metrology and Accreditation
The Swiss Accreditation Service is one of the signatories to the EA
Multilateral Agreement for the recognition of calibration certificates

Accreditation No.: **SCS 108**

Client **LG (Dymstec)**

Certificate No: **ET3-1715_Sep07**

CALIBRATION CERTIFICATE

Object **ET3DV6 - SN:1715**

Calibration procedure(s) **QA CAL-01.v6
Calibration procedure for dosimetric E-field probes**

Calibration date: **September 26, 2007**

Condition of the calibrated item **In Tolerance**

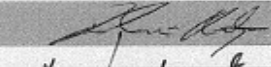

This calibration certificate documents the traceability to national standards, which realize the physical units of measurements (SI).
The measurements and the uncertainties with confidence probability are given on the following pages and are part of the certificate.

All calibrations have been conducted in the closed laboratory facility: environment temperature (22 ± 3)°C and humidity < 70%.

Calibration Equipment used (M&TE critical for calibration)

Primary Standards	ID #	Cal Date (Calibrated by, Certificate No.)	Scheduled Calibration
Power meter E4419B	GB41293874	29-Mar-07 (METAS, No. 217-00670)	Mar-08
Power sensor E4412A	MY41495277	29-Mar-07 (METAS, No. 217-00670)	Mar-08
Power sensor E4412A	MY41498087	29-Mar-07 (METAS, No. 217-00670)	Mar-08
Reference 3 dB Attenuator	SN: S5054 (3c)	8-Aug-07 (METAS, No. 217-00719)	Aug-08
Reference 20 dB Attenuator	SN: S5086 (20b)	29-Mar-07 (METAS, No. 217-00671)	Mar-08
Reference 30 dB Attenuator	SN: S5129 (30b)	8-Aug-07 (METAS, No. 217-00720)	Aug-08
Reference Probe ES3DV2	SN: 3013	4-Jan-07 (SPEAG, No. ES3-3013_Jan07)	Jan-08
DAE4	SN: 654	20-Apr-07 (SPEAG, No. DAE4-654_Apr07)	Apr-08

Secondary Standards	ID #	Check Date (in house)	Scheduled Check
RF generator HP 8648C	US3642U01700	4-Aug-99 (SPEAG, in house check Nov-05)	In house check: Nov-07
Network Analyzer HP 8753E	US37390585	18-Oct-01 (SPEAG, in house check Oct-06)	In house check: Oct-07

	Name	Function	Signature
Calibrated by:	Katja Pokovic	Technical Manager	
Approved by:	Niels Kuster	Quality Manager	

Issued: September 26, 2007

This calibration certificate shall not be reproduced except in full without written approval of the laboratory.

Certificate No: ET3-1715_Sep07

Page 1 of 9

Calibration Laboratory of
Schmid & Partner
 Engineering AG
 Zeughausstrasse 43, 8004 Zurich, Switzerland



S Schweizerischer Kalibrierdienst
S Service suisse d'étalonnage
C Servizio svizzero di taratura
S Swiss Calibration Service

Accredited by the Swiss Federal Office of Metrology and Accreditation
 The Swiss Accreditation Service is one of the signatories to the EA
 Multilateral Agreement for the recognition of calibration certificates

Accreditation No.: **SCS 108**

Glossary:

TSL	tissue simulating liquid
NORM _{x,y,z}	sensitivity in free space
ConvF	sensitivity in TSL / NORM _{x,y,z}
DCP	diode compression point
Polarization φ	φ rotation around probe axis
Polarization ϑ	ϑ rotation around an axis that is in the plane normal to probe axis (at measurement center), i.e., $\vartheta = 0$ is normal to probe axis

Calibration is Performed According to the Following Standards:

- IEEE Std 1528-2003, "IEEE Recommended Practice for Determining the Peak Spatial-Averaged Specific Absorption Rate (SAR) in the Human Head from Wireless Communications Devices: Measurement Techniques", December 2003
- IEC 62209-1, "Procedure to measure the Specific Absorption Rate (SAR) for hand-held devices used in close proximity to the ear (frequency range of 300 MHz to 3 GHz)", February 2005

Methods Applied and Interpretation of Parameters:

- NORM_{x,y,z}**: Assessed for E-field polarization $\vartheta = 0$ ($f \leq 900$ MHz in TEM-cell; $f > 1800$ MHz: R22 waveguide). NORM_{x,y,z} are only intermediate values, i.e., the uncertainties of NORM_{x,y,z} does not effect the E²-field uncertainty inside TSL (see below ConvF).
- NORM(f)_{x,y,z}** = NORM_{x,y,z} * frequency_response (see Frequency Response Chart). This linearization is implemented in DASY4 software versions later than 4.2. The uncertainty of the frequency response is included in the stated uncertainty of ConvF.
- DCP_{x,y,z}**: DCP are numerical linearization parameters assessed based on the data of power sweep (no uncertainty required). DCP does not depend on frequency nor media.
- ConvF and Boundary Effect Parameters**: Assessed in flat phantom using E-field (or Temperature Transfer Standard for $f \leq 800$ MHz) and inside waveguide using analytical field distributions based on power measurements for $f > 800$ MHz. The same setups are used for assessment of the parameters applied for boundary compensation (alpha, depth) of which typical uncertainty values are given. These parameters are used in DASY4 software to improve probe accuracy close to the boundary. The sensitivity in TSL corresponds to NORM_{x,y,z} * ConvF whereby the uncertainty corresponds to that given for ConvF. A frequency dependent ConvF is used in DASY version 4.4 and higher which allows extending the validity from ± 50 MHz to ± 100 MHz.
- Spherical isotropy (3D deviation from isotropy)**: in a field of low gradients realized using a flat phantom exposed by a patch antenna.
- Sensor Offset**: The sensor offset corresponds to the offset of virtual measurement center from the probe tip (on probe axis). No tolerance required.

Certificate No: ET3-1715_Sep07

Page 2 of 9

ET3DV6 SN:1715

September 26, 2007

Probe ET3DV6

SN:1715

Manufactured:	August 7, 2002
Last calibrated:	November 21, 2006
Recalibrated:	September 26, 2007

Calibrated for DASY Systems

(Note: non-compatible with DASY2 system!)

Certificate No: ET3-1715_Sep07

Page 3 of 9

ET3DV6 SN:1715

September 26, 2007

DASY - Parameters of Probe: ET3DV6 SN:1715**Sensitivity in Free Space^A**

NormX	1.77 ± 10.1%	$\mu\text{V}/(\text{V}/\text{m})^2$	DCP X	92 mV
NormY	1.53 ± 10.1%	$\mu\text{V}/(\text{V}/\text{m})^2$	DCP Y	95 mV
NormZ	1.79 ± 10.1%	$\mu\text{V}/(\text{V}/\text{m})^2$	DCP Z	96 mV

Diode Compression^B**Sensitivity in Tissue Simulating Liquid (Conversion Factors)**

Please see Page 8.

Boundary Effect**TSL 900 MHz Typical SAR gradient: 5 % per mm**

Sensor Center to Phantom Surface Distance		3.7 mm	4.7 mm
SAR _{be} [%]	Without Correction Algorithm	5.8	2.9
SAR _{be} [%]	With Correction Algorithm	0.1	0.1

TSL 1810 MHz Typical SAR gradient: 10 % per mm

Sensor Center to Phantom Surface Distance		3.7 mm	4.7 mm
SAR _{be} [%]	Without Correction Algorithm	11.9	8.5
SAR _{be} [%]	With Correction Algorithm	0.2	0.1

Sensor Offset

Probe Tip to Sensor Center	2.7 mm
Optical Surface Detection	low, but repeatable

The reported uncertainty of measurement is stated as the standard uncertainty of measurement multiplied by the coverage factor k=2, which for a normal distribution corresponds to a coverage probability of approximately 95%.

^A The uncertainties of NormX,Y,Z do not affect the E²-field uncertainty inside TSL (see Page 8).

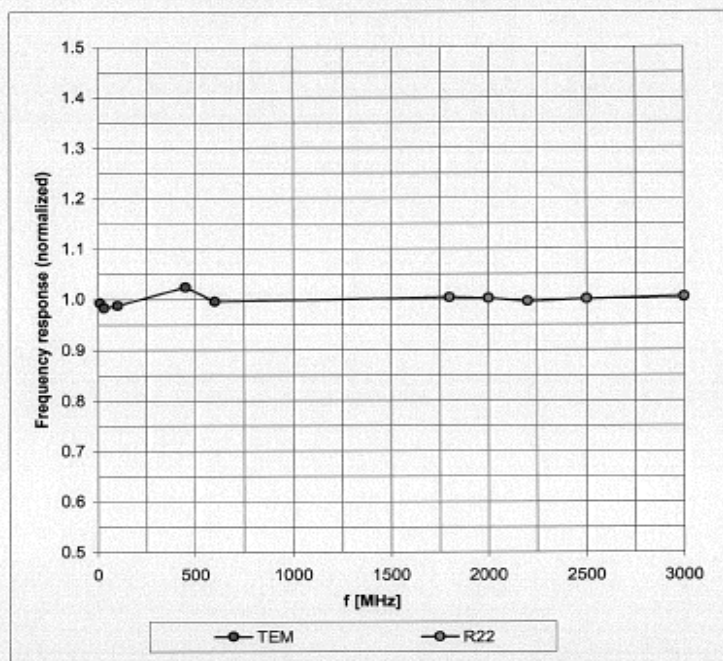
^B Numerical linearization parameter: uncertainty not required.

ET3DV6 SN:1715

September 26, 2007

Frequency Response of E-Field

(TEM-Cell:ifi110 EXX, Waveguide: R22)

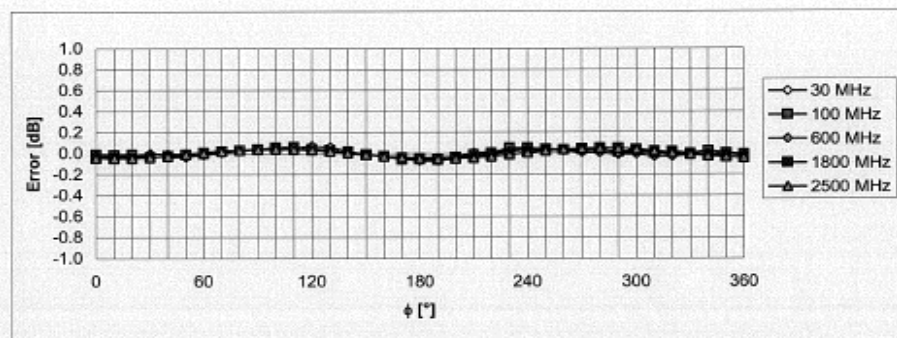
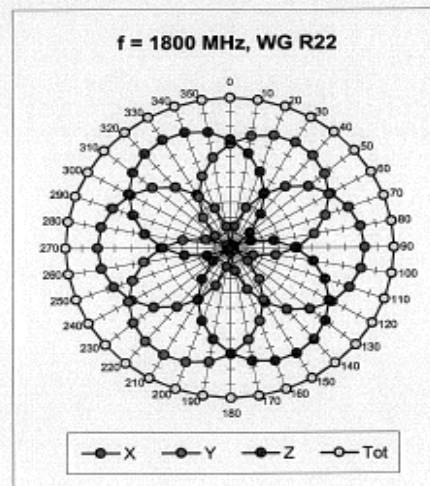
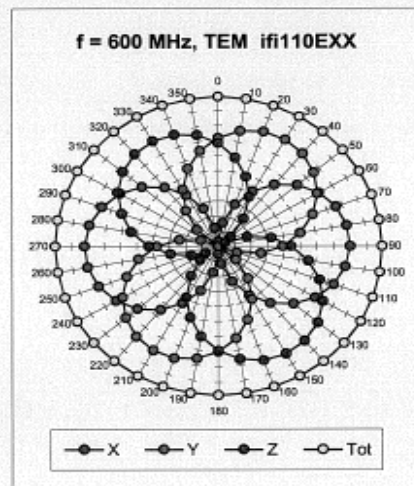
Uncertainty of Frequency Response of E-field: $\pm 6.3\%$ ($k=2$)

Certificate No: ET3-1715_Sep07

Page 5 of 9

ET3DV6 SN:1715

September 26, 2007

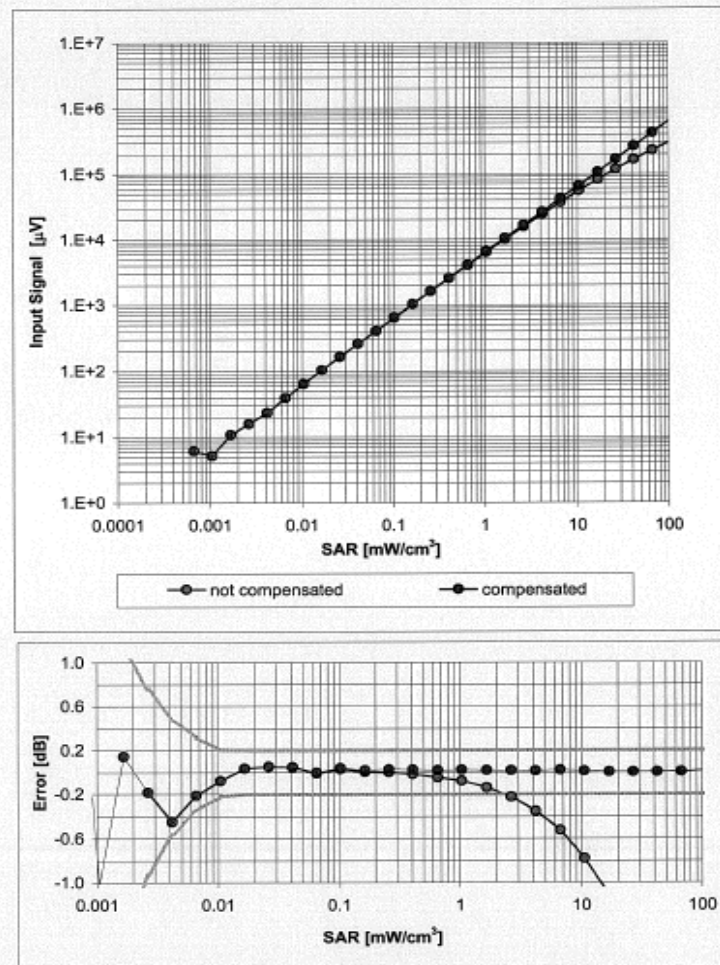
Receiving Pattern (ϕ), $\theta = 0^\circ$ Uncertainty of Axial Isotropy Assessment: $\pm 0.5\%$ ($k=2$)

Certificate No: ET3-1715_Sep07

Page 6 of 9

ET3DV6 SN:1715

September 26, 2007

Dynamic Range $f(\text{SAR}_{\text{head}})$
(Waveguide R22, $f = 1800 \text{ MHz}$)Uncertainty of Linearity Assessment: $\pm 0.6\%$ ($k=2$)

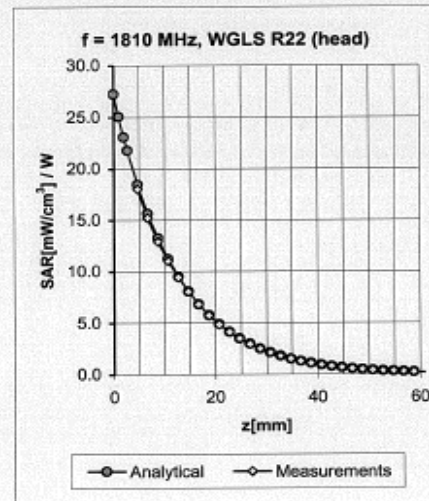
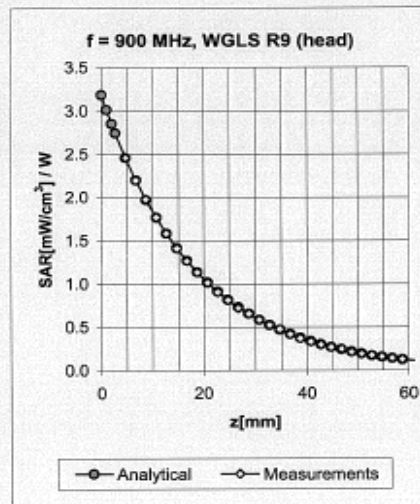
Certificate No: ET3-1715_Sep07

Page 7 of 9

ET3DV6 SN:1715

September 26, 2007

Conversion Factor Assessment



f [MHz]	Validity [MHz] ^c	TSL	Permittivity	Conductivity	Alpha	Depth	ConvF Uncertainty
900	± 50 / ± 100	Head	41.5 ± 5%	0.97 ± 5%	0.22	3.30	6.40 ± 11.0% (k=2)
1810	± 50 / ± 100	Head	40.0 ± 5%	1.40 ± 5%	0.48	2.67	5.14 ± 11.0% (k=2)
1950	± 50 / ± 100	Head	40.0 ± 5%	1.40 ± 5%	0.67	2.24	4.89 ± 11.0% (k=2)
2450	± 50 / ± 100	Head	39.2 ± 5%	1.80 ± 5%	0.51	2.94	4.52 ± 11.8% (k=2)
900	± 50 / ± 100	Body	55.0 ± 5%	1.05 ± 5%	0.34	2.66	6.16 ± 11.0% (k=2)
1810	± 50 / ± 100	Body	53.3 ± 5%	1.52 ± 5%	0.51	3.21	4.72 ± 11.0% (k=2)
1950	± 50 / ± 100	Body	53.3 ± 5%	1.52 ± 5%	0.81	2.04	4.41 ± 11.0% (k=2)
2450	± 50 / ± 100	Body	52.7 ± 5%	1.95 ± 5%	0.53	2.96	3.84 ± 11.8% (k=2)

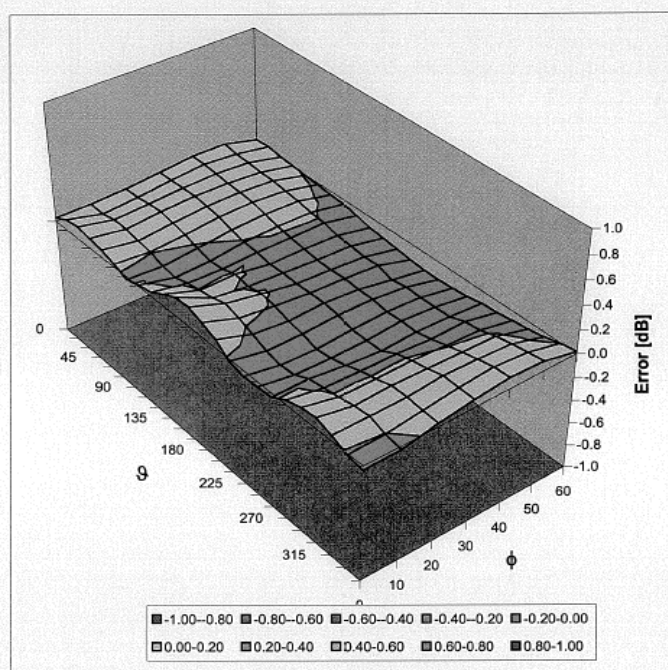
^c The validity of ± 100 MHz only applies for DASY v4.4 and higher (see Page 2). The uncertainty is the RSS of the ConvF uncertainty at calibration frequency and the uncertainty for the indicated frequency band.

Certificate No: ET3-1715_Sep07

Page 8 of 9

ET3DV6 SN:1715

September 26, 2007

Deviation from Isotropy in HSLError (ϕ , θ), $f = 900$ MHzUncertainty of Spherical Isotropy Assessment: $\pm 2.6\%$ ($k=2$)

Certificate No: ET3-1715_Sep07

Page 9 of 9

**Calibration Laboratory of
Schmid & Partner
Engineering AG**
Zeughausstrasse 43, 8004 Zurich, Switzerland



S Schweizerischer Kalibrierdienst
C Service suisse d'étalonnage
S Servizio svizzero di taratura
S Swiss Calibration Service

Accredited by the Swiss Accreditation Service (SAS)
The Swiss Accreditation Service is one of the signatories to the EA
Multilateral Agreement for the recognition of calibration certificates

Accreditation No.: **SCS 108**

Client **LG (Dymstec)**

Certificate No: **D835V2-468_Apr08**

CALIBRATION CERTIFICATE

Object **D835V2 - SN: 468**

Calibration procedure(s) **QA CAL-05.v7
Calibration procedure for dipole validation kits**

Calibration date: **April 23, 2008**


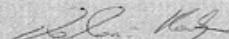
Condition of the calibrated item **In Tolerance**

This calibration certificate documents the traceability to national standards, which realize the physical units of measurements (SI).
The measurements and the uncertainties with confidence probability are given on the following pages and are part of the certificate.

All calibrations have been conducted in the closed laboratory facility: environment temperature (22 ± 3)°C and humidity < 70%.

Calibration Equipment used (M&TE critical for calibration)

Primary Standards	ID #	Cal Date (Certificate No.)	Scheduled Calibration
Power meter EPM-442A	GB37480704	04-Oct-07 (No. 217-00736)	Oct-08
Power sensor HP 8481A	US37292783	04-Oct-07 (No. 217-00736)	Oct-08
Reference 20 dB Attenuator	SN: 5086 (20g)	07-Aug-07 (No. 217-00718)	Aug-08
Type-N mismatch combination	SN: 5047.2 / 06327	08-Aug-07 (No. 217-00721)	Aug-08
Reference Probe ES3DV2	SN: 3025	01-Mar-08 (No. ES3-3025_Mar08)	Mar-09
DAE4	SN: 601	14-Mar-08 (No. DAE4-601_Mar08)	Mar-09
Secondary Standards	ID #	Check Date (in house)	Scheduled Check
Power sensor HP 8481A	MY41092317	18-Oct-02 (in house check Oct-07)	In house check: Oct-09
RF generator R&S SMT-06	100005	4-Aug-99 (in house check Oct-07)	In house check: Oct-09
Network Analyzer HP 8753E	US37390585 S4206	18-Oct-01 (in house check Oct-07)	In house check: Oct-08

	Name	Function	Signature
Calibrated by:	Marcel Fehr	Laboratory Technician	
Approved by:	Katja Pokovic	Technical Manager	

Issued: April 24, 2008

This calibration certificate shall not be reproduced except in full without written approval of the laboratory.

Certificate No: D835V2-468_Apr08

Page 1 of 6

Calibration Laboratory of
Schmid & Partner
Engineering AG
Zeughausstrasse 43, 8004 Zurich, Switzerland



S Schweizerischer Kalibrierdienst
C Service suisse d'étalonnage
S Servizio svizzero di taratura
S Swiss Calibration Service

Accredited by the Swiss Accreditation Service (SAS)
The Swiss Accreditation Service is one of the signatories to the EA
Multilateral Agreement for the recognition of calibration certificates

Accreditation No.: **SCS 108**

Glossary:

TSL	tissue simulating liquid
ConvF	sensitivity in TSL / NORM x,y,z
N/A	not applicable or not measured

Calibration is Performed According to the Following Standards:

- IEEE Std 1528-2003, "IEEE Recommended Practice for Determining the Peak Spatial-Averaged Specific Absorption Rate (SAR) in the Human Head from Wireless Communications Devices: Measurement Techniques", December 2003
- IEC 62209-1, "Procedure to measure the Specific Absorption Rate (SAR) for hand-held devices used in close proximity to the ear (frequency range of 300 MHz to 3 GHz)", February 2005
- Federal Communications Commission Office of Engineering & Technology (FCC OET), "Evaluating Compliance with FCC Guidelines for Human Exposure to Radiofrequency Electromagnetic Fields; Additional Information for Evaluating Compliance of Mobile and Portable Devices with FCC Limits for Human Exposure to Radiofrequency Emissions", Supplement C (Edition 01-01) to Bulletin 65

Additional Documentation:

- DASY4/5 System Handbook

Methods Applied and Interpretation of Parameters:

- Measurement Conditions:** Further details are available from the Validation Report at the end of the certificate. All figures stated in the certificate are valid at the frequency indicated.
- Antenna Parameters with TSL:** The dipole is mounted with the spacer to position its feed point exactly below the center marking of the flat phantom section, with the arms oriented parallel to the body axis.
- Feed Point Impedance and Return Loss:** These parameters are measured with the dipole positioned under the liquid filled phantom. The impedance stated is transformed from the measurement at the SMA connector to the feed point. The Return Loss ensures low reflected power. No uncertainty required.
- Electrical Delay:** One-way delay between the SMA connector and the antenna feed point. No uncertainty required.
- SAR measured:** SAR measured at the stated antenna input power.
- SAR normalized:** SAR as measured, normalized to an input power of 1 W at the antenna connector.
- SAR for nominal TSL parameters:** The measured TSL parameters are used to calculate the nominal SAR result.

Measurement Conditions

DASY system configuration, as far as not given on page 1.

DASY Version	DASY4	V4.7
Extrapolation	Advanced Extrapolation	
Phantom	Modular Flat Phantom V4.9	
Distance Dipole Center - TSL	15 mm	with Spacer
Zoom Scan Resolution	dx, dy, dz = 5 mm	
Frequency	835 MHz \pm 1 MHz	

Head TSL parameters

The following parameters and calculations were applied.

	Temperature	Permittivity	Conductivity
Nominal Head TSL parameters	22.0 °C	41.5	0.90 mho/m
Measured Head TSL parameters	(22.0 \pm 0.2) °C	41.1 \pm 6 %	0.90 mho/m \pm 6 %
Head TSL temperature during test	(22.2 \pm 0.2) °C	----	----

SAR result with Head TSL

SAR averaged over 1 cm³ (1 g) of Head TSL	Condition	
SAR measured	250 mW input power	2.28 mW / g
SAR normalized	normalized to 1W	9.12 mW / g
SAR for nominal Head TSL parameters ¹	normalized to 1W	9.07 mW / g \pm 17.0 % (k=2)

SAR averaged over 10 cm³ (10 g) of Head TSL	condition	
SAR measured	250 mW input power	1.50 mW / g
SAR normalized	normalized to 1W	6.00 mW / g
SAR for nominal Head TSL parameters ¹	normalized to 1W	5.97 mW / g \pm 16.5 % (k=2)

¹ Correction to nominal TSL parameters according to d), chapter "SAR Sensitivities"

Appendix**Antenna Parameters with Head TSL**

Impedance, transformed to feed point	52.4 Ω - 2.4 j Ω
Return Loss	- 29.6 dB

General Antenna Parameters and Design

Electrical Delay (one direction)	1.385 ns
----------------------------------	----------

After long term use with 100W radiated power, only a slight warming of the dipole near the feedpoint can be measured.

The dipole is made of standard semirigid coaxial cable. The center conductor of the feeding line is directly connected to the second arm of the dipole. The antenna is therefore short-circuited for DC-signals.

No excessive force must be applied to the dipole arms, because they might bend or the soldered connections near the feedpoint may be damaged.

Additional EUT Data

Manufactured by	SPEAG
Manufactured on	August 27, 2002

DASY4 Validation Report for Head TSL

Date/Time: 23.04.2008 11:29:27

Test Laboratory: SPEAG, Zurich, Switzerland

DUT: Dipole 835 MHz; Type: D835V2; Serial: D835V2 - SN:468

Communication System: CW-835; Frequency: 835 MHz; Duty Cycle: 1:1

Medium: HSL 900 MHz;

Medium parameters used: $f = 835$ MHz; $\sigma = 0.9$ mho/m; $\epsilon_r = 41.2$; $\rho = 1000$ kg/m³

Phantom section: Flat Section

Measurement Standard: DASY4 (High Precision Assessment)

DASY4 Configuration:

- Probe: ES3DV2 - SN3025; ConvF(6.09, 6.09, 6.09); Calibrated: 01.03.2008
- Sensor-Surface: 3.4mm (Mechanical Surface Detection)
- Electronics: DAE4 Sn601; Calibrated: 14.03.2008
- Phantom: Flat Phantom 4.9L; Type: QD000P49AA; ;
- Measurement SW: DASY4, V4.7 Build 55; Postprocessing SW: SEMCAD, V1.8 Build 172

Pin=250mW; dip=15mm; dist=3.4mm/Zoom Scan (7x7x7)/Cube 0:

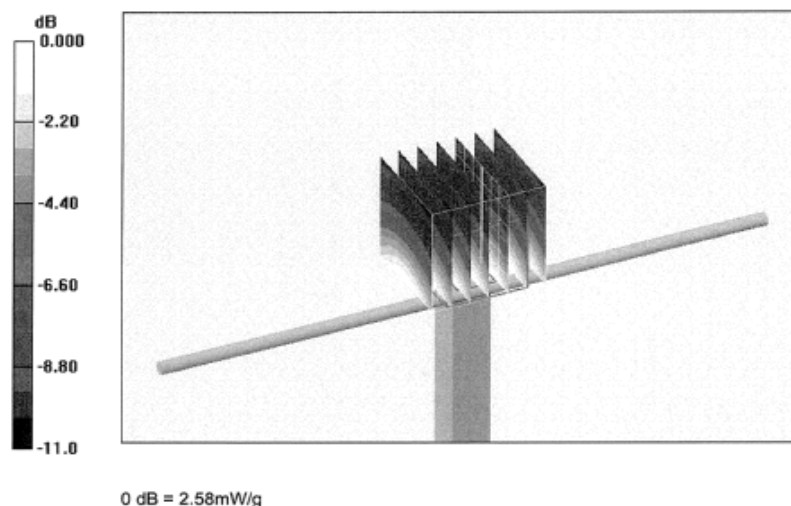
Measurement grid: dx=5mm, dy=5mm, dz=5mm

Reference Value = 55.0 V/m; Power Drift = 0.012 dB

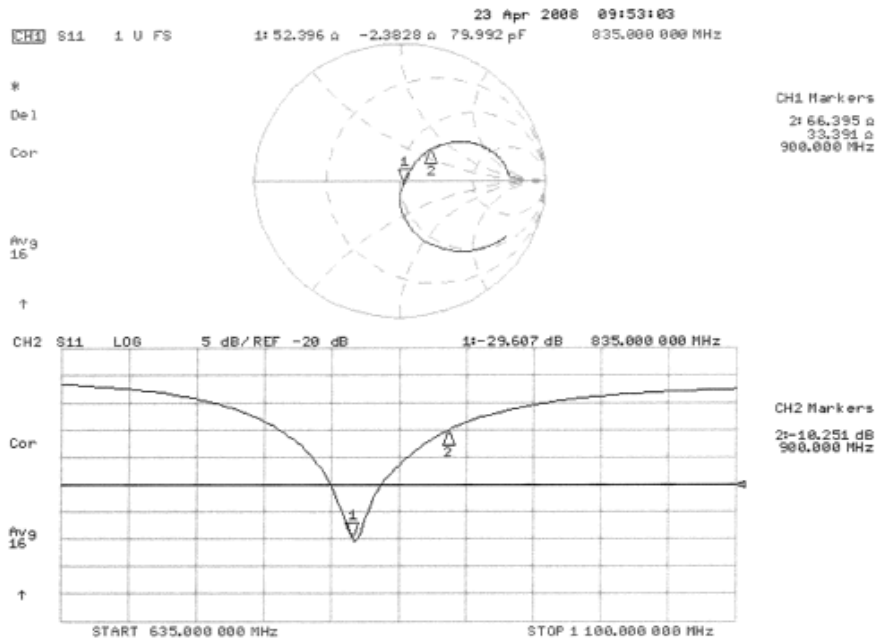
Peak SAR (extrapolated) = 3.29 W/kg

SAR(1 g) = 2.28 mW/g; SAR(10 g) = 1.5 mW/g

Maximum value of SAR (measured) = 2.58 mW/g



Impedance Measurement Plot for Head TSL



**Calibration Laboratory of
Schmid & Partner
Engineering AG**
Zeughausstrasse 43, 8004 Zurich, Switzerland



S Schweizerischer Kalibrierdienst
C Service suisse d'étalonnage
S Servizio svizzero di taratura
S Swiss Calibration Service

Accredited by the Swiss Federal Office of Metrology and Accreditation
The Swiss Accreditation Service is one of the signatories to the EA
Multilateral Agreement for the recognition of calibration certificates

Accreditation No.: **SCS 108**

Client **LG (Dymstec)**

Certificate No: **D1900V2-5d057_Apr08**

CALIBRATION CERTIFICATE

Object **D1900V2 - SN: 5d057**

Calibration procedure(s) **QA CAL-05.v7
Calibration procedure for dipole validation kits**

Calibration date: **April 22, 2008**

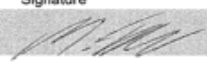
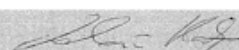
Condition of the calibrated item **In Tolerance**

This calibration certificate documents the traceability to national standards, which realize the physical units of measurements (SI).
The measurements and the uncertainties with confidence probability are given on the following pages and are part of the certificate.

All calibrations have been conducted in the closed laboratory facility: environment temperature (22 ± 3 °C) and humidity < 70%.

Calibration Equipment used (M&TE critical for calibration)

Primary Standards	ID #	Cal Date (Calibrated by, Certificate No.)	Scheduled Calibration
Power meter EPM-442A	GB37460704	04-Oct-07 (No. 217-00736)	Oct-08
Power sensor HP 8481A	US37292783	04-Oct-07 (No. 217-00736)	Oct-08
Reference 20 dB Attenuator	SN: 5086 (20g)	07-Aug-07 (No. 217-00718)	Aug-08
Type-N mismatch combination	SN: 5047.2 / 06327	08-Aug-07 (No. 217-00721)	Aug-08
Reference Probe ES3DV2	SN: 3025	01-Mar-08 (No. ES3-3025_Mar08)	Mar-09
DAE4	SN: 601	14-Mar-08 (No. DAE4-601_Mar08)	Mar-09
Secondary Standards	ID #	Check Date (in house)	Scheduled Check
Power sensor HP 8481A	MY41092317	18-Oct-02 (in house check Oct-07)	In house check: Oct-08
RF generator R&S SMT-06	100005	4-Aug-99 (in house check Oct-07)	In house check: Oct-09
Network Analyzer HP 8753E	US37390585 S4206	18-Oct-01 (in house check Oct-07)	In house check: Oct-08

	Name	Function	Signature
Calibrated by:	Marcel Fehr	Laboratory Technician	
Approved by:	Katja Pokovic	Technical Manager	

Issued: April 23, 2008

This calibration certificate shall not be reproduced except in full without written approval of the laboratory.

Certificate No: D1900V2-5d057_Apr08

Page 1 of 6

**Calibration Laboratory of
Schmid & Partner
Engineering AG**
Zeughausstrasse 43, 8004 Zurich, Switzerland



S Schweizerischer Kalibrierdienst
C Service suisse d'étalonnage
S Servizio svizzero di taratura
S Swiss Calibration Service

Accredited by the Swiss Accreditation Service (SAS)
The Swiss Accreditation Service is one of the signatories to the EA
Multilateral Agreement for the recognition of calibration certificates

Accreditation No.: **SCS 108**

Glossary:

TSL	tissue simulating liquid
ConvF	sensitivity in TSL / NORM x,y,z
N/A	not applicable or not measured

Calibration is Performed According to the Following Standards:

- IEEE Std 1528-2003, "IEEE Recommended Practice for Determining the Peak Spatial-Averaged Specific Absorption Rate (SAR) in the Human Head from Wireless Communications Devices: Measurement Techniques", December 2003
- CENELEC EN 50361, "Basic standard for the measurement of Specific Absorption Rate related to human exposure to electromagnetic fields from mobile phones (300 MHz - 3 GHz), July 2001
- Federal Communications Commission Office of Engineering & Technology (FCC OET), "Evaluating Compliance with FCC Guidelines for Human Exposure to Radiofrequency Electromagnetic Fields; Additional Information for Evaluating Compliance of Mobile and Portable Devices with FCC Limits for Human Exposure to Radiofrequency Emissions", Supplement C (Edition 01-01) to Bulletin 65

Additional Documentation:

- DASY4/5 System Handbook

Methods Applied and Interpretation of Parameters:

- Measurement Conditions:** Further details are available from the Validation Report at the end of the certificate. All figures stated in the certificate are valid at the frequency indicated.
- Antenna Parameters with TSL:** The dipole is mounted with the spacer to position its feed point exactly below the center marking of the flat phantom section, with the arms oriented parallel to the body axis.
- Feed Point Impedance and Return Loss:** These parameters are measured with the dipole positioned under the liquid filled phantom. The impedance stated is transformed from the measurement at the SMA connector to the feed point. The Return Loss ensures low reflected power. No uncertainty required.
- Electrical Delay:** One-way delay between the SMA connector and the antenna feed point. No uncertainty required.
- SAR measured:** SAR measured at the stated antenna input power.
- SAR normalized:** SAR as measured, normalized to an input power of 1 W at the antenna connector.
- SAR for nominal TSL parameters:** The measured TSL parameters are used to calculate the nominal SAR result.

Measurement Conditions

DASY system configuration, as far as not given on page 1.

DASY Version	DASY4	V4.7
Extrapolation	Advanced Extrapolation	
Phantom	Modular Flat Phantom V5.0	
Distance Dipole Center - TSL	10 mm	with Spacer
Zoom Scan Resolution	dx, dy, dz = 5 mm	
Frequency	1900 MHz \pm 1 MHz	

Head TSL parameters

The following parameters and calculations were applied.

	Temperature	Permittivity	Conductivity
Nominal Head TSL parameters	22.0 °C	40.0	1.40 mho/m
Measured Head TSL parameters	(22.0 \pm 0.2) °C	40.1 \pm 6 %	1.47 mho/m \pm 6 %
Head TSL temperature during test	(21.2 \pm 0.2) °C	----	----

SAR result with Head TSL

SAR averaged over 1 cm³ (1 g) of Head TSL	condition	
SAR measured	250 mW input power	10.1 mW / g
SAR normalized	normalized to 1W	40.4 mW / g
SAR for nominal Head TSL parameters ¹	normalized to 1W	39.5 mW / g \pm 17.0 % (k=2)

SAR averaged over 10 cm³ (10 g) of Head TSL	Condition	
SAR measured	250 mW input power	5.19 mW / g
SAR normalized	normalized to 1W	20.8 mW / g
SAR for nominal Head TSL parameters ¹	normalized to 1W	20.6 mW / g \pm 16.5 % (k=2)

¹ Correction to nominal TSL parameters according to d), chapter "SAR Sensitivities"

Appendix**Antenna Parameters with Head TSL**

Impedance, transformed to feed point	53.1 Ω + 4.8 j Ω
Return Loss	- 25.2 dB

General Antenna Parameters and Design

Electrical Delay (one direction)	1.199 ns
----------------------------------	----------

After long term use with 100W radiated power, only a slight warming of the dipole near the feedpoint can be measured.

The dipole is made of standard semirigid coaxial cable. The center conductor of the feeding line is directly connected to the second arm of the dipole. The antenna is therefore short-circuited for DC-signals.

No excessive force must be applied to the dipole arms, because they might bend or the soldered connections near the feedpoint may be damaged.

Additional EUT Data

Manufactured by	SPEAG
Manufactured on	March 19, 2004

DASY4 Validation Report for Head TSL

Date/Time: 22.04.2008 14:09:52

Test Laboratory: SPEAG, Zurich, Switzerland

DUT: Dipole 1900 MHz; Type: D1900V2; Serial: D1900V2 - SN:5d057

Communication System: CW; Frequency: 1900 MHz; Duty Cycle: 1:1

Medium: HSL U10 BB;

Medium parameters used: $f = 1900 \text{ MHz}$; $\sigma = 1.47 \text{ mho/m}$; $\epsilon_r = 40.1$; $\rho = 1000 \text{ kg/m}^3$

Phantom section: Flat Section

Measurement Standard: DASY4 (High Precision Assessment)

DASY4 Configuration:

- Probe: ES3DV2 - SN3025; ConvF(4.9, 4.9, 4.9); Calibrated: 01.03.2008
- Sensor-Surface: 3.4mm (Mechanical Surface Detection)
- Electronics: DAE4 Sn601; Calibrated: 14.03.2008
- Phantom: Flat Phantom 5.0 (front); Type: QD000P50AA; ;
- Measurement SW: DASY4, V4.7 Build 55; Postprocessing SW: SEMCAD, V1.8 Build 172

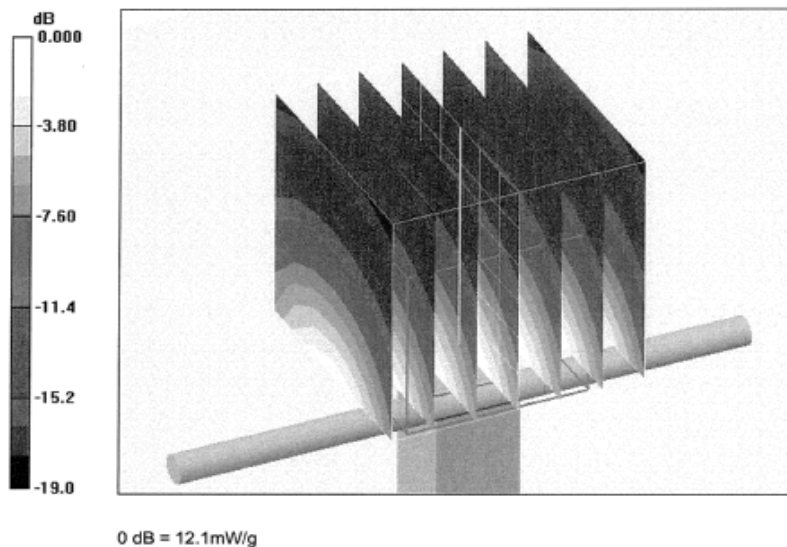
Pin = 250 mW; d = 10 mm/Zoom Scan (7x7x7)/Cube 0:Measurement grid: $dx=5\text{mm}$, $dy=5\text{mm}$, $dz=5\text{mm}$

Reference Value = 93.1 V/m; Power Drift = 0.035 dB

Peak SAR (extrapolated) = 18.8 W/kg

SAR(1 g) = 10.1 mW/g; SAR(10 g) = 5.19 mW/g

Maximum value of SAR (measured) = 12.1 mW/g



Impedance Measurement Plot for Head TSL

