

Band 4: UMTS-FDD (WCDMA), CHEEK

Exposure Conditions

Band	Band 4	TSL Permittivity	42.2
Frequency [MHz] Channel Number	1732.600 1413	TSL Conductivity [S/m]	1.24
Group UID	WCDMA 10011-CAC	Phantom Section TSL	LeftHead HSL
Conversion Factor	7.6	Test Distance [mm]	0.00

Hardware Setup

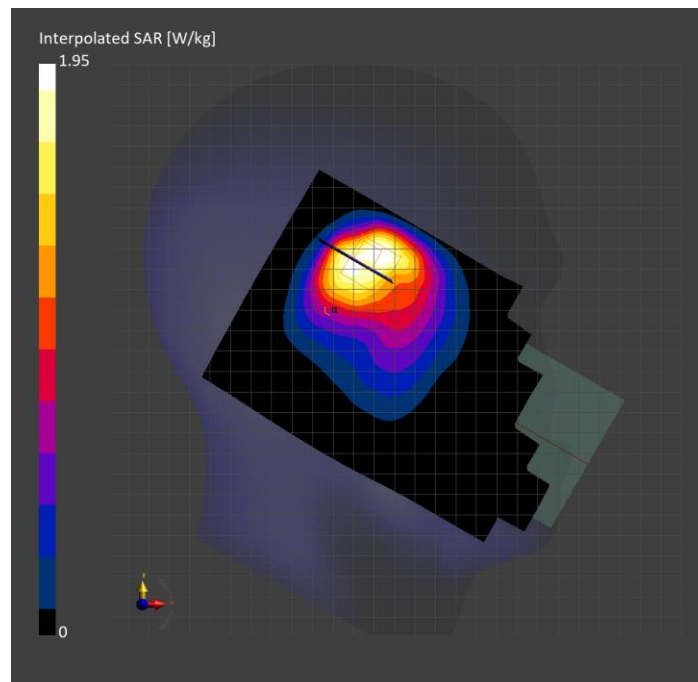
Probe Calibration Date	EX3DV4 - SN7807 2025-05-08	Phantom	Twin-SAM V8.0 (30deg probe tilt)
DAE Calibration Date	DAE4 Sn1796 2025-05-09	TSL Type	HBBL-600-10000
Software Version	16.4.0.5005		

Scan Setup

	Area Scan	Zoom Scan
Grid Extents [mm]	120.0 x 210.0	42.0 x 42.0 x 31.2
Grid Steps [mm]	15.0 x 15.0	6.0 x 6.0 x 1.5
Sensor Surface [mm]	3.0	1.4
Graded Grid	N/A	Yes
M2/M1 [> 30%]		76.5
Dist 3dB Peak [> Grid Steps Δx, Δy mm]		7.6
Peak SAR [W/kg], SAR Peak Location [mm]	N/A	1.81, 28.0, 333.2, -169.5

Measurement Results

	Area Scan	Zoom Scan
psSAR1g [W/Kg]	0.820	0.918
psSAR10g [W/Kg]	0.464	0.514
Power Drift [±0.2 dB]	N/A	0.10



**Band 66: LTE-FDD (SC-FDMA, 50% RB, 20 MHz, QPSK) RBPosition:Mid
AntennaCfg:SISO, BACK**

Exposure Conditions

Band	Band 66	TSL Permittivity	42.1
Frequency [MHz] Channel Number	1745.000 132322	TSL Conductivity [S/m]	1.24
Group UID	LTE-FDD 10297-AAE	Phantom Section TSL	Flat HSL
Conversion Factor	7.6	Test Distance [mm]	5.00

Hardware Setup

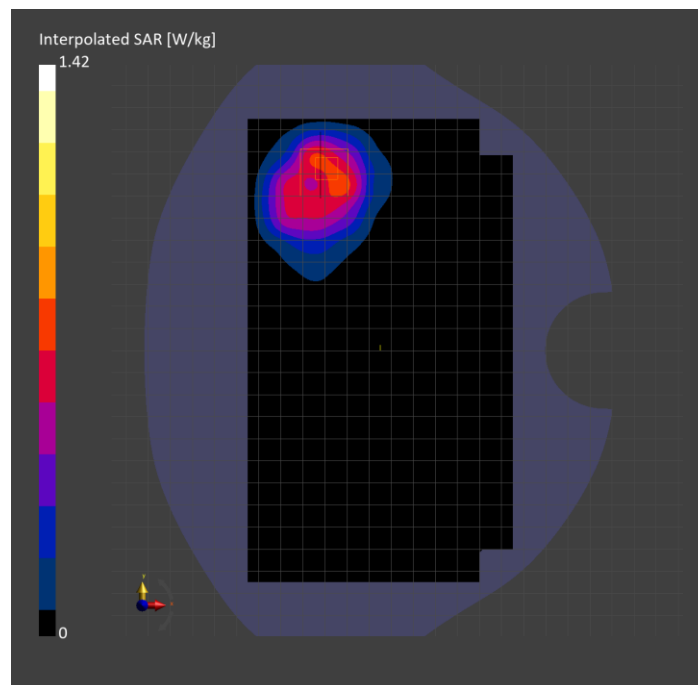
Probe Calibration Date	EX3DV4 - SN7807 2025-05-08	Phantom	Twin-SAM V8.0 (30deg probe tilt)
DAE Calibration Date	DAE4 Sn1796 2025-05-09	TSL Type	HBBL-600-10000
Software Version	16.4.0.5005		

Scan Setup

	Area Scan	Zoom Scan
Grid Extents [mm]	120.0 x 210.0	30.0 x 30.0 x 31.2
Grid Steps [mm]	15.0 x 15.0	6.0 x 6.0 x 1.5
Sensor Surface [mm]	3.0	1.4
Graded Grid	N/A	Yes
M2/M1 [> 30%]		80.6
Dist 3dB Peak [> Grid Steps Δx, Δy mm]		9.9
Peak SAR [W/kg], SAR Peak Location [mm]	N/A	1.42, -49.2, 82.4, -202.0

Measurement Results

	Area Scan	Zoom Scan
psSAR1g [W/Kg]	0.635	0.745
psSAR10g [W/Kg]	0.385	0.400
Power Drift [±0.2 dB]	N/A	-0.03



Band 7: LTE-FDD (SC-FDMA, 50% RB, 20 MHz, QPSK) RBPosition:Mid AntennaCfg:SISO, EDGE RIGHT

Exposure Conditions

Band	Band 7	TSL Permittivity	40.3
Frequency [MHz] Channel Number	2510.000 20850	TSL Conductivity [S/m]	1.81
Group UID	LTE-FDD 10297-AAE	Phantom Section TSL	Flat HSL
Conversion Factor	6.97	Test Distance [mm]	5.00

Hardware Setup

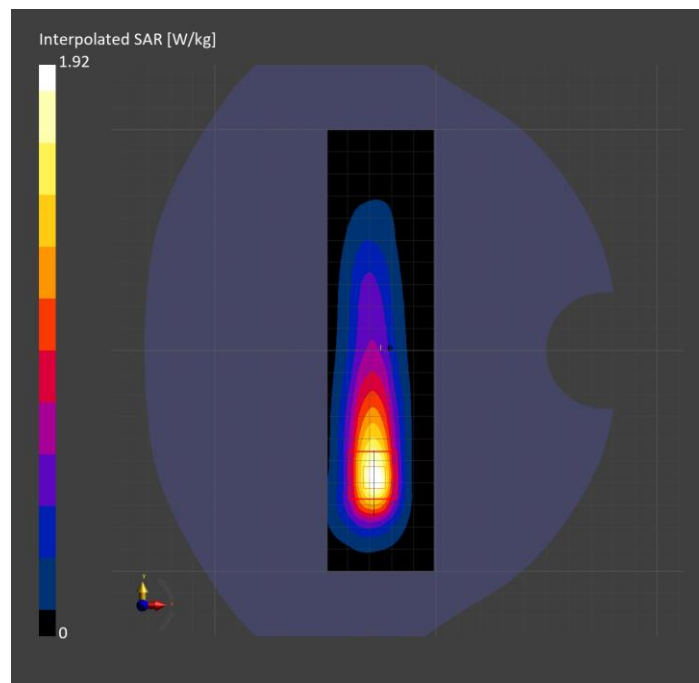
Probe Calibration Date	EX3DV4 - SN3885 2024-11-05	Phantom	Twin-SAM V8.0 (30deg probe tilt)
DAE Calibration Date	DAE4 Sn1359 2025-01-08	TSL Type	HBBL-600-10000
Software Version	16.4.0.5005		

Scan Setup

	Area Scan	Zoom Scan
Grid Extents [mm]	48.0 x 200.0	30.0 x 30.0 x 31.2
Grid Steps [mm]	8.0 x 10.0	5.0 x 5.0 x 1.5
Sensor Surface [mm]	3.0	1.4
Graded Grid	N/A	Yes
M2/M1 [> 30%]		78.8
Dist 3dB Peak [> Grid Steps Δx, Δy mm]		8.0
Peak SAR [W/kg], SAR Peak Location [mm]	N/A	1.92, -27.9, -57.5, -202.0

Measurement Results

	Area Scan	Zoom Scan
psSAR1g [W/Kg]	0.840	0.889
psSAR10g [W/Kg]	0.396	0.403
Power Drift [±0.2 dB]	N/A	-0.03



Custom Band: CW, EDGE LEFT

Exposure Conditions

Band	Custom Band	TSL Permittivity	42.4
Frequency [MHz] Channel Number	1618.400 1618400	TSL Conductivity [S/m]	1.28
Group UID	CW 0--	Phantom Section TSL	Flat HSL
Conversion Factor	8.16	Test Distance [mm]	0.00

Hardware Setup

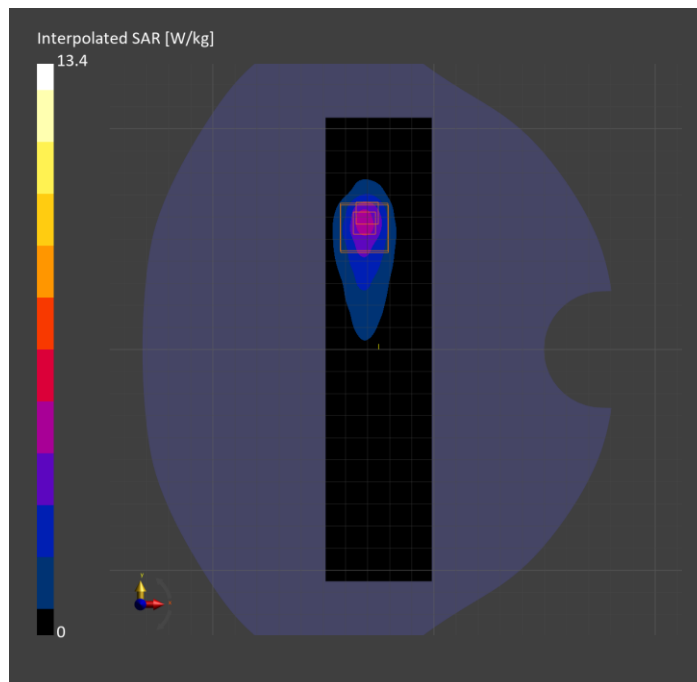
Probe Calibration Date	EX3DV4 - SN7335 2025-01-13	Phantom	Twin-SAM V8.0 (30deg probe tilt)
DAE Calibration Date	DAE4ip Sn1892 2025-03-04	TSL Type	HBBL-600-10000
Software Version	16.4.0.5005		

Scan Setup

	Area Scan	Zoom Scan
Grid Extents [mm]	48.0 x 210.0	38.0 x 41.8 x 33.4
Grid Steps [mm]	8.0 x 15.0	3.8 x 3.8 x 1.4
Sensor Surface [mm]	3.0	1.4
Graded Grid	N/A	Yes
M2/M1 [> 30%]		65.6
Dist 3dB Peak [> Grid Steps Δx, Δy mm]		5.1
Peak SAR [W/kg], SAR Peak Location [mm]	N/A	13.4, -31.6, 55.5, -196.2

Measurement Results

	Area Scan	Zoom Scan
psSAR1g [W/Kg]	3.99	4.08
psSAR10g [W/Kg]	1.96	1.85
Power Drift [±0.2 dB]	0.01	-0.02



U-NII-5: IEEE 802.11ax (160MHz, MCS0, 99pc duty cycle), BACK

Exposure Conditions

Band	U-NII-5	Phantom Section	5G
Frequency [MHz] Channel Number	6345.0 79	Conversion Factor	1.0
Group UID	WLAN, 10755-AAC	Position Test Distance [mm]	BACK 2.00

Hardware Setup

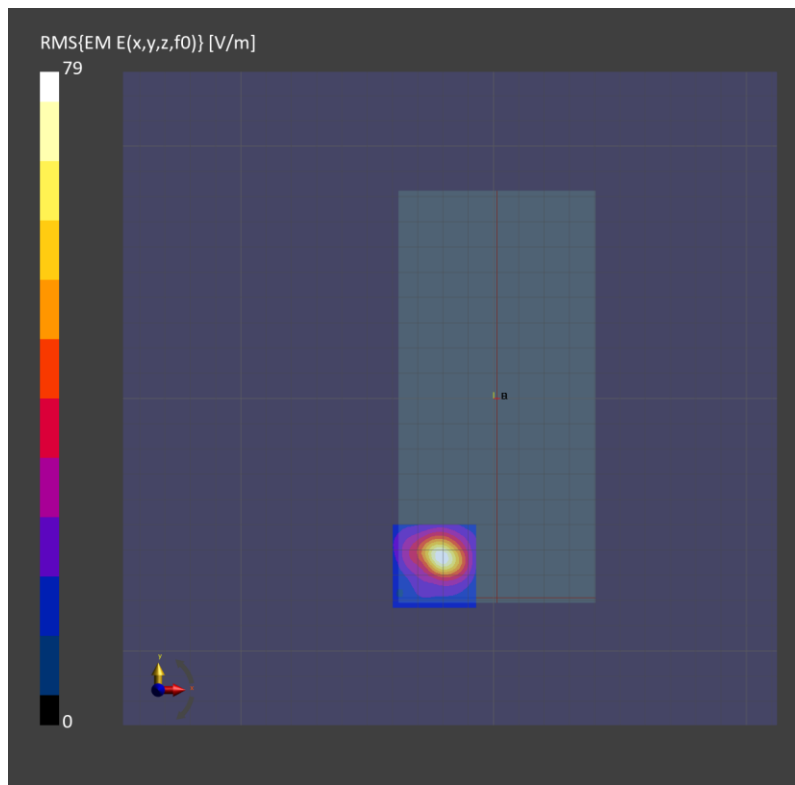
Probe Calibration Date	EUmmWV4 - SN9532_F1-55GHz 2025-02-17	Phantom	mmWave xxxx
DAE Calibration Date	DAE4 Sn1548 2025-02-07	Medium	Air -
Software Version	3.2.0.1840		

Scan Setup

Scan Type	5G Scan	Grid Extents [mm]	30.0 x 30.0
Grid Steps [lambda]	0.0412 x 0.0412	Sensor Surface [mm]	2.0

Measurement Results

Avg. Area [cm ²]	4.00
psPDn+ [W/m ²]	2.76
psPDtot+ [W/m ²]	3.14
psPDmod+ [W/m ²]	5.36
E _{max} [V/m]	79.0
Power Drift [dB]	0.01



Band 4: UMTS-FDD (WCDMA), CHEEK

Exposure Conditions

Band	Band 4	TSL Permittivity	42.2
Frequency [MHz] Channel Number	1732.600 1413	TSL Conductivity [S/m]	1.24
Group UID	WCDMA 10011-CAC	Phantom Section TSL	LeftHead HSL
Conversion Factor	7.6	Test Distance [mm]	0.00

Hardware Setup

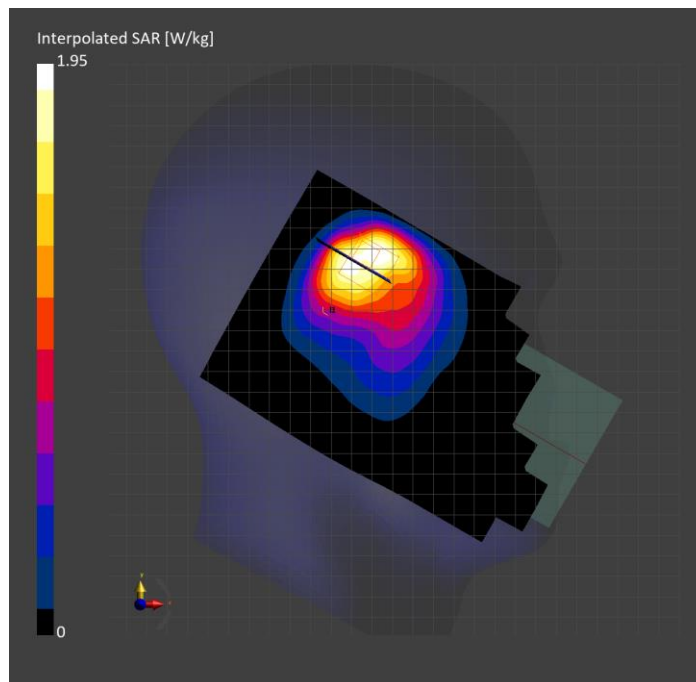
Probe Calibration Date	EX3DV4 - SN7807 2025-05-08	Phantom	Twin-SAM V8.0 (30deg probe tilt)
DAE Calibration Date	DAE4 Sn1796 2025-05-09	TSL Type	HBBL-600-10000
Software Version	16.4.0.5005		

Scan Setup

	Area Scan	Zoom Scan
Grid Extents [mm]	120.0 x 210.0	47.2 x 47.2 x 31.2
Grid Steps [mm]	15.0 x 15.0	5.9 x 5.9 x 1.5
Sensor Surface [mm]	3.0	1.4
Graded Grid	N/A	Yes
M2/M1 [> 30%]		76.6
Dist 3dB Peak [> Grid Steps Δx, Δy mm]		7.6
Peak SAR [W/kg], SAR Peak Location [mm]	N/A	2.33, 26.9, 337.5, -169.1

Measurement Results

	Area Scan	Zoom Scan
psSAR1g [W/Kg]	0.929	1.10
psSAR10g [W/Kg]	0.558	0.611
Power Drift [±0.2 dB]	N/A	0.06



**Band 66: LTE-FDD (SC-FDMA, 50% RB, 20 MHz, QPSK) RBPosition:Mid
AntennaCfg:SISO, BACK**

Exposure Conditions

Band	Band 66	TSL Permittivity	42.1
Frequency [MHz] Channel Number	1745.000 132322	TSL Conductivity [S/m]	1.24
Group UID	LTE-FDD 10297-AAE	Phantom Section TSL	Flat HSL
Conversion Factor	7.6	Test Distance [mm]	5.00

Hardware Setup

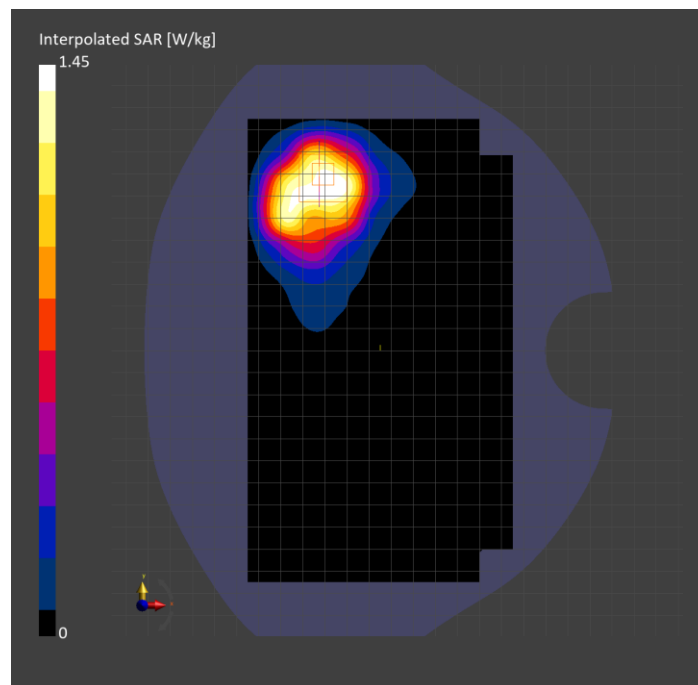
Probe Calibration Date	EX3DV4 - SN7807 2025-05-08	Phantom	Twin-SAM V8.0 (30deg probe tilt)
DAE Calibration Date	DAE4 Sn1796 2025-05-09	TSL Type	HBBL-600-10000
Software Version	16.4.0.5005		

Scan Setup

	Area Scan	Zoom Scan
Grid Extents [mm]	120.0 x 210.0	36.0 x 30.0 x 31.2
Grid Steps [mm]	15.0 x 15.0	6.0 x 6.0 x 1.5
Sensor Surface [mm]	3.0	1.4
Graded Grid	N/A	Yes
M2/M1 [> 30%]		79.9
Dist 3dB Peak [> Grid Steps Δx, Δy mm]		9.6
Peak SAR [W/kg], SAR Peak Location [mm]	N/A	1.45, -50.9, 79.9, -202.0

Measurement Results

	Area Scan	Zoom Scan
psSAR1g [W/Kg]	0.646	0.749
psSAR10g [W/Kg]	0.393	0.400
Power Drift [±0.2 dB]	N/A	-0.07



Band 7: LTE-FDD (SC-FDMA, 50% RB, 20 MHz, QPSK) RBPosition:Mid
AntennaCfg:SISO, EDGE RIGHT

Exposure Conditions

Band	Band 7	TSL Permittivity	40.3
Frequency [MHz] Channel Number	2510.000 20850	TSL Conductivity [S/m]	1.81
Group UID	LTE-FDD 10297-AAE	Phantom Section TSL	Flat HSL
Conversion Factor	6.97	Test Distance [mm]	5.00

Hardware Setup

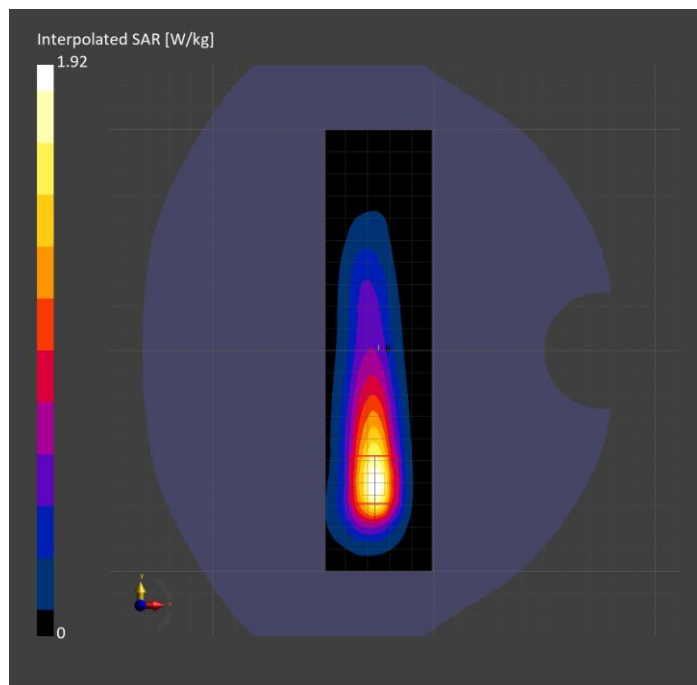
Probe Calibration Date	EX3DV4 - SN3885 2024-11-05	Phantom	Twin-SAM V8.0 (30deg probe tilt)
DAE Calibration Date	DAE4 Sn1359 2025-01-08	TSL Type	HBBL-600-10000
Software Version	16.4.0.5005		

Scan Setup

	Area Scan	Zoom Scan
Grid Extents [mm]	48.0 x 200.0	30.0 x 30.0 x 31.2
Grid Steps [mm]	8.0 x 10.0	5.0 x 5.0 x 1.5
Sensor Surface [mm]	3.0	1.4
Graded Grid	N/A	Yes
M2/M1 [> 30%]		79.0
Dist 3dB Peak [> Grid Steps Δx, Δy mm]		8.0
Peak SAR [W/kg], SAR Peak Location [mm]	N/A	1.92, -27.2, -60.6, -202.0

Measurement Results

	Area Scan	Zoom Scan
psSAR1g [W/Kg]	0.845	0.884
psSAR10g [W/Kg]	0.398	0.400
Power Drift [±0.2 dB]	N/A	-0.00



Custom Band: CW, EDGE LEFT

Exposure Conditions

Band	Custom Band	TSL Permittivity	42.4
Frequency [MHz] Channel Number	1618.400 1618400	TSL Conductivity [S/m]	1.28
Group UID	CW 0--	Phantom Section TSL	Flat HSL
Conversion Factor	8.16	Test Distance [mm]	0.00

Hardware Setup

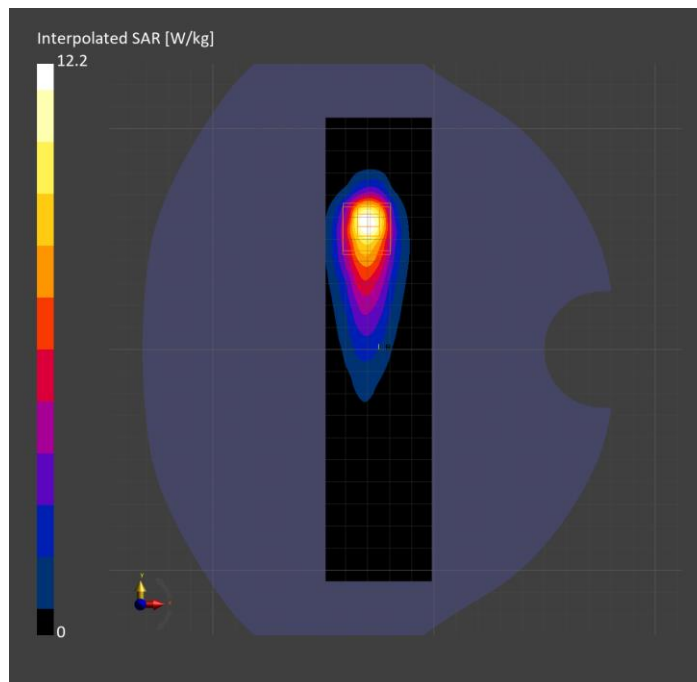
Probe Calibration Date	EX3DV4 - SN7335 2025-01-13	Phantom	Twin-SAM V8.0 (30deg probe tilt)
DAE Calibration Date	DAE4ip Sn1892 2025-03-04	TSL Type	HBBL-600-10000
Software Version	16.4.0.5005		

Scan Setup

	Area Scan	Zoom Scan
Grid Extents [mm]	48.0 x 210.0	32.0 x 40.0 x 33.4
Grid Steps [mm]	8.0 x 15.0	4.0 x 4.0 x 1.4
Sensor Surface [mm]	3.0	1.4
Graded Grid	N/A	Yes
M2/M1 [> 30%]		65.3
Dist 3dB Peak [> Grid Steps Δx, Δy mm]		5.6
Peak SAR [W/kg], SAR Peak Location [mm]	N/A	12.2, -30.4, 55.5, -196.2

Measurement Results

	Area Scan	Zoom Scan
psSAR1g [W/Kg]	3.84	3.82
psSAR10g [W/Kg]	1.89	1.75
Power Drift [±0.2 dB]	0.02	0.04



U-NII-6: IEEE 802.11ax (160MHz, MCS0, 99pc duty cycle), BACK

Exposure Conditions

Band	U-NII-6	Phantom Section	5G
Frequency [MHz] Channel Number	6505.0 111	Conversion Factor	1.0
Group UID	WLAN, 10755-AAC	Position Test Distance [mm]	BACK 2.00

Hardware Setup

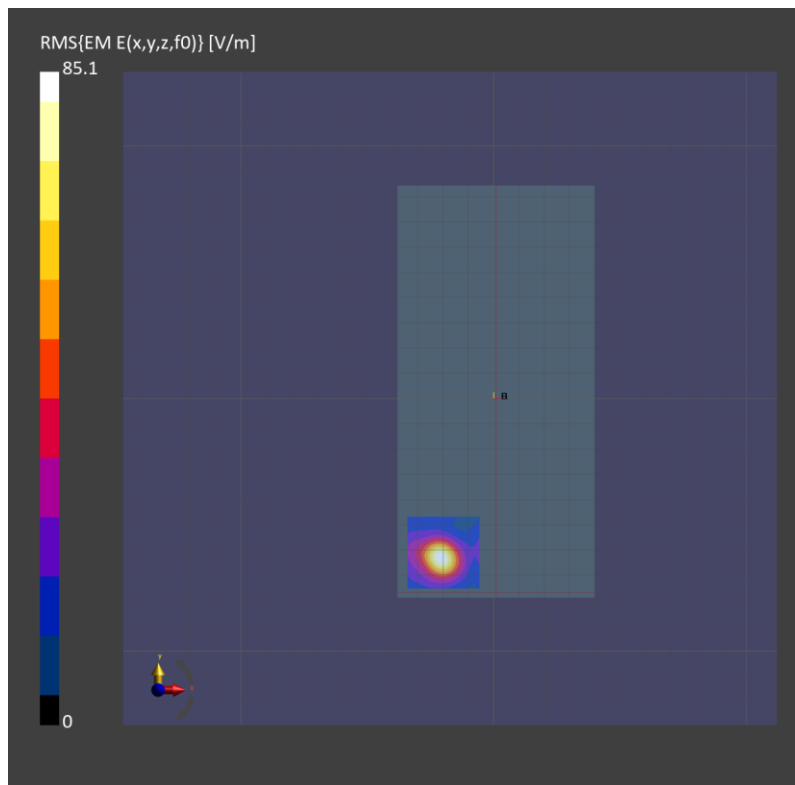
Probe Calibration Date	EUmmWV4 - SN9532_F1-55GHz 2025-02-17	Phantom	mmWave xxxx
DAE Calibration Date	DAE4 Sn1548 2025-02-07	Medium	Air -
Software Version	3.2.0.1840		

Scan Setup

Scan Type	5G Scan	Grid Extents [mm]	25.0 x 25.0
Grid Steps [lambda]	0.0412 x 0.0412	Sensor Surface [mm]	2.0

Measurement Results

Avg. Area [cm ²]	4.00
psPDn+ [W/m ²]	3.32
psPDtot+ [W/m ²]	3.96
psPDmod+ [W/m ²]	6.37
E _{max} [V/m]	84.5
Power Drift [dB]	0.12



Band 4: UMTS-FDD (WCDMA), CHEEK

Exposure Conditions

Band	Band 4	TSL Permittivity	42.2
Frequency [MHz] Channel Number	1732.600 1413	TSL Conductivity [S/m]	1.24
Group UID	WCDMA 10011-CAC	Phantom Section TSL	LeftHead HSL
Conversion Factor	7.6	Test Distance [mm]	0.00

Hardware Setup

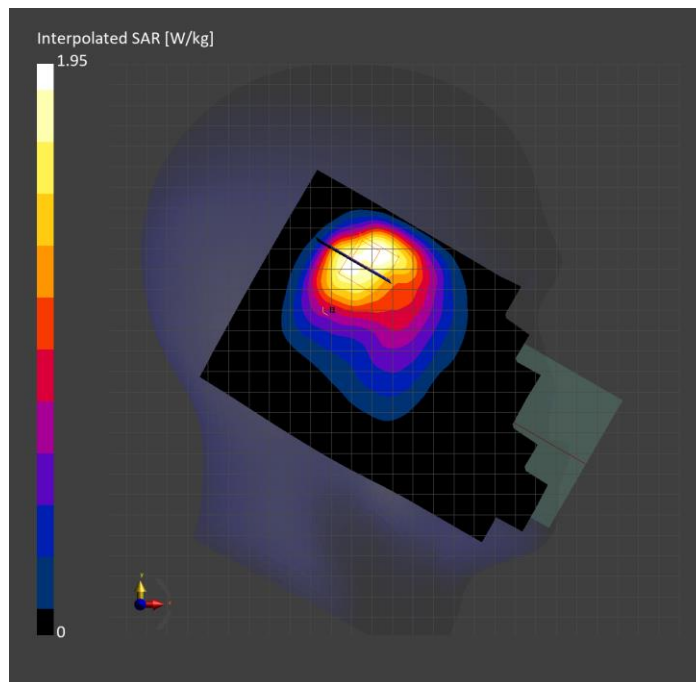
Probe Calibration Date	EX3DV4 - SN7807 2025-05-08	Phantom	Twin-SAM V8.0 (30deg probe tilt)
DAE Calibration Date	DAE4 Sn1796 2025-05-09	TSL Type	HBBL-600-10000
Software Version	16.4.0.5005		

Scan Setup

	Area Scan	Zoom Scan
Grid Extents [mm]	120.0 x 210.0	42.0 x 42.0 x 31.2
Grid Steps [mm]	15.0 x 15.0	6.0 x 6.0 x 1.5
Sensor Surface [mm]	3.0	1.4
Graded Grid	N/A	Yes
M2/M1 [> 30%]		82.3
Dist 3dB Peak [> Grid Steps Δx, Δy mm]		7.7
Peak SAR [W/kg], SAR Peak Location [mm]	N/A	1.95, 26.9, 337.5, -169.1

Measurement Results

	Area Scan	Zoom Scan
psSAR1g [W/Kg]	0.849	0.996
psSAR10g [W/Kg]	0.521	0.565
Power Drift [±0.2 dB]	N/A	0.02



Band 66: LTE-FDD (SC-FDMA, 50% RB, 20 MHz, QPSK) RBPosition:Mid AntennaCfg:SISO, BACK

Exposure Conditions

Band	Band 66	TSL Permittivity	42.1
Frequency [MHz] Channel Number	1745.000 132322	TSL Conductivity [S/m]	1.24
Group UID	LTE-FDD 10297-AAE	Phantom Section TSL	Flat HSL
Conversion Factor	7.6	Test Distance [mm]	5.00

Hardware Setup

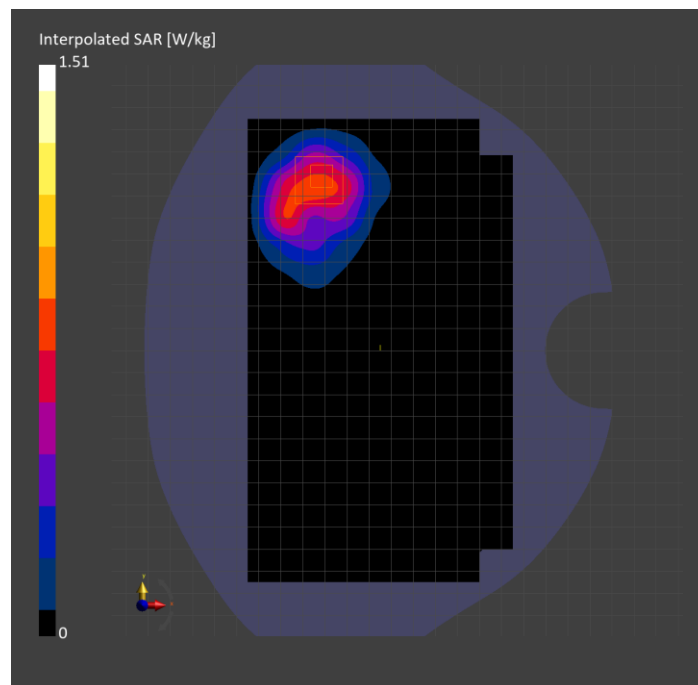
Probe Calibration Date	EX3DV4 - SN7807 2025-05-08	Phantom	Twin-SAM V8.0 (30deg probe tilt)
DAE Calibration Date	DAE4 Sn1796 2025-05-09	TSL Type	HBBL-600-10000
Software Version	16.4.0.5005		

Scan Setup

	Area Scan	Zoom Scan
Grid Extents [mm]	120.0 x 210.0	30.0 x 30.0 x 31.2
Grid Steps [mm]	15.0 x 15.0	6.0 x 6.0 x 1.5
Sensor Surface [mm]	3.0	1.4
Graded Grid	N/A	Yes
M2/M1 [> 30%]		79.8
Dist 3dB Peak [> Grid Steps Δx, Δy mm]		9.7
Peak SAR [W/kg], SAR Peak Location [mm]	N/A	1.51, -51.5, 79.0, -202.0

Measurement Results

	Area Scan	Zoom Scan
psSAR1g [W/Kg]	0.688	0.771
psSAR10g [W/Kg]	0.413	0.412
Power Drift [±0.2 dB]	N/A	0.01



**Band 7: LTE-FDD (SC-FDMA, 50% RB, 20 MHz, QPSK) RBPosition:Mid
AntennaCfg:SISO, EDGE RIGHT**

Exposure Conditions

Band	Band 7	TSL Permittivity	40.3
Frequency [MHz] Channel Number	2510.000 20850	TSL Conductivity [S/m]	1.81
Group UID	LTE-FDD 10297-AAE	Phantom Section TSL	Flat HSL
Conversion Factor	6.97	Test Distance [mm]	5.00

Hardware Setup

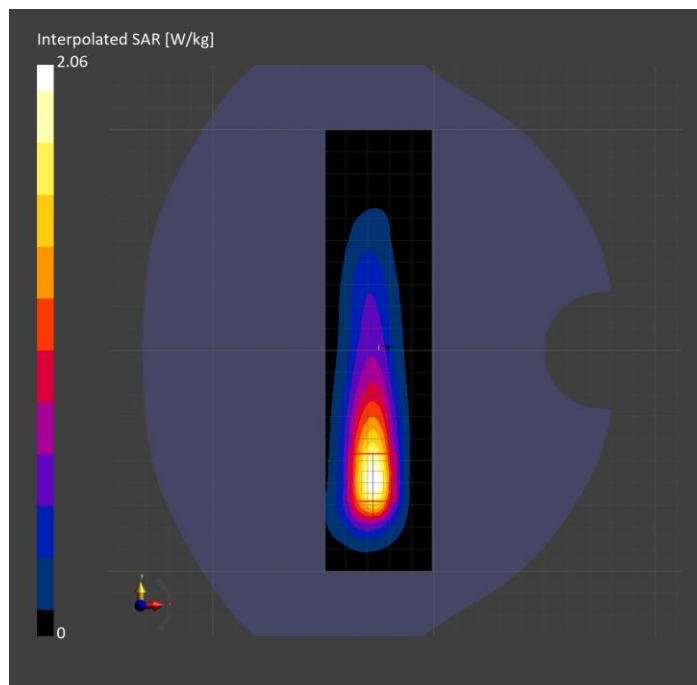
Probe Calibration Date	EX3DV4 - SN3885 2024-11-05	Phantom	Twin-SAM V8.0 (30deg probe tilt)
DAE Calibration Date	DAE4 Sn1359 2025-01-08	TSL Type	HBBL-600-10000
Software Version	16.4.0.5005		

Scan Setup

	Area Scan	Zoom Scan
Grid Extents [mm]	48.0 x 200.0	30.0 x 30.0 x 31.2
Grid Steps [mm]	8.0 x 10.0	5.0 x 5.0 x 1.5
Sensor Surface [mm]	3.0	1.4
Graded Grid	N/A	Yes
M2/M1 [> 30%]		78.6
Dist 3dB Peak [> Grid Steps Δx, Δy mm]		8.0
Peak SAR [W/kg], SAR Peak Location [mm]	N/A	2.06, -27.8, -59.6, -202.0

Measurement Results

	Area Scan	Zoom Scan
psSAR1g [W/Kg]	0.892	0.945
psSAR10g [W/Kg]	0.416	0.422
Power Drift [±0.2 dB]	N/A	-0.02



U-NII-5: IEEE 802.11ax (160MHz, MCS0, 99pc duty cycle), BACK

Exposure Conditions

Band	U-NII-5	Phantom Section	5G
Frequency [MHz] Channel Number	6345.0 79	Conversion Factor	1.0
Group UID	WLAN, 10755-AAC	Position Test Distance [mm]	BACK 2.00

Hardware Setup

Probe Calibration Date	EUmmWV4 - SN9493_F1-55GHz 2025-01-13	Phantom	mmWave xxxx
DAE Calibration Date	DAE4 Sn1716 2025-03-11	Medium	Air -
Software Version	3.2.0.1840		

Scan Setup

Scan Type	5G Scan	Grid Extents [mm]	25.0 x 25.0
Grid Steps [lambda]	0.0412 x 0.0412	Sensor Surface [mm]	2.0

Measurement Results

Avg. Area [cm ²]	4.00
psPDn+ [W/m ²]	3.03
psPDtot+ [W/m ²]	3.32
psPDmod+ [W/m ²]	3.68
E _{max} [V/m]	57.0
Power Drift [dB]	0.25

