

PCS 1900 RF Interference Potential Test Report

Hardware Setup

Probe | Calibration Date EF3DV3 - SN4041 | March 04, 2025
DAE | Calibration Date DAE4ip Sn1621 | April 10, 2025
Software Version 1.2.6.2199

Communication Systems

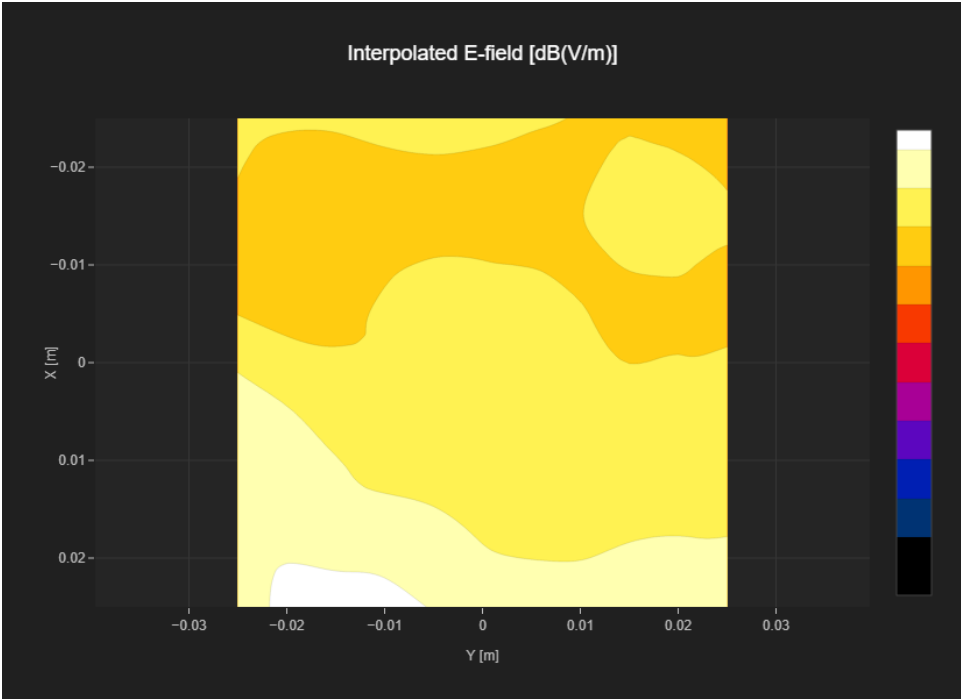
MIF 3.8
Channel | Frequency [MHz] 512 | 1850.2
Communication Systems' Name GPRS-FDD (TDMA, GMSK, TN 0)

Grid Settings

| | | | |
|---------------|------|-------------|------|
| Extent X [mm] | 50.0 | Step X [mm] | 10.0 |
| Extent Y [mm] | 50.0 | Step Y [mm] | 10.0 |
| Distance [mm] | 15.0 | | |

Results

| | | | |
|--------------|-------|------------------------|-------|
| Emax [dBV/m] | 14.31 | Eavg 50x50 Max [dBV/m] | 11.96 |
| Drift [dB] | 0.58 | RFail [dBV/m] | 15.76 |



PCS 1900 RF Interference Potential Test Report

Hardware Setup

| | |
|--------------------------|----------------------------------|
| Probe Calibration Date | EF3DV3 - SN4041 March 04, 2025 |
| DAE Calibration Date | DAE4ip Sn1621 April 10, 2025 |
| Software Version | 1.2.6.2199 |

Communication Systems

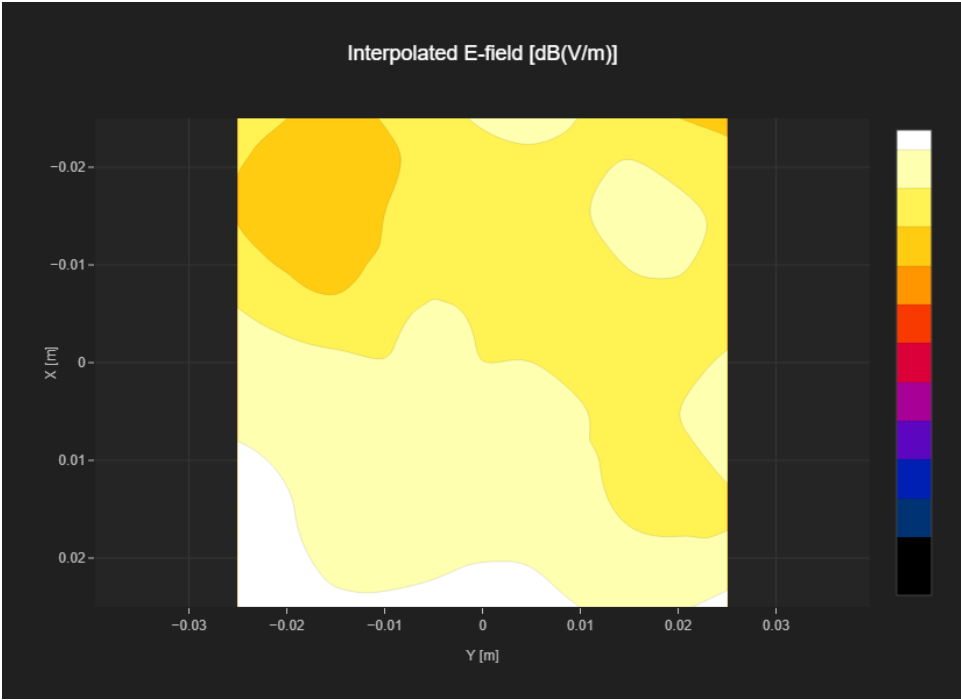
| | |
|-----------------------------|-----------------------------|
| MIF | 3.8 |
| Channel Frequency [MHz] | 661 1880.0 |
| Communication Systems' Name | GPRS-FDD (TDMA, GMSK, TN 0) |

Grid Settings

| | | | |
|---------------|------|-------------|------|
| Extent X [mm] | 50.0 | Step X [mm] | 10.0 |
| Extent Y [mm] | 50.0 | Step Y [mm] | 10.0 |
| Distance [mm] | 15.0 | | |

Results

| | | | |
|--------------|-------|------------------------|-------|
| Emax [dBV/m] | 13.28 | Eavg 50x50 Max [dBV/m] | 11.67 |
| Drift [dB] | 0.68 | RFail [dBV/m] | 15.47 |



PCS 1900 RF Interference Potential Test Report

Hardware Setup

| | |
|--------------------------|----------------------------------|
| Probe Calibration Date | EF3DV3 - SN4041 March 04, 2025 |
| DAE Calibration Date | DAE4ip Sn1621 April 10, 2025 |
| Software Version | 1.2.6.2199 |

Communication Systems

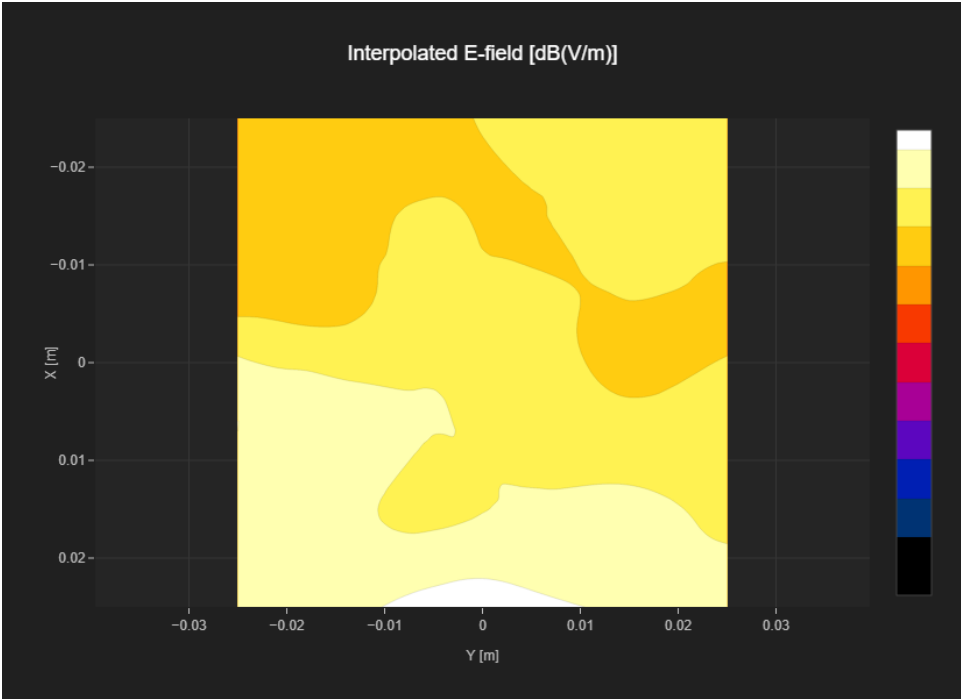
| | |
|-----------------------------|-----------------------------|
| MIF | 3.8 |
| Channel Frequency [MHz] | 810 1909.8 |
| Communication Systems' Name | GPRS-FDD (TDMA, GMSK, TN 0) |

Grid Settings

| | | | |
|---------------|------|-------------|------|
| Extent X [mm] | 50.0 | Step X [mm] | 10.0 |
| Extent Y [mm] | 50.0 | Step Y [mm] | 10.0 |
| Distance [mm] | 15.0 | | |

Results

| | | | |
|--------------|-------|------------------------|-------|
| Emax [dBV/m] | 14.61 | Eavg 50x50 Max [dBV/m] | 11.55 |
| Drift [dB] | 0.88 | RFail [dBV/m] | 15.35 |



PCS 1900 RF Interference Potential Test Report

Hardware Setup

| | |
|--------------------------|----------------------------------|
| Probe Calibration Date | EF3DV3 - SN4041 March 04, 2025 |
| DAE Calibration Date | DAE4ip Sn1621 April 10, 2025 |
| Software Version | 1.2.6.2199 |

Communication Systems

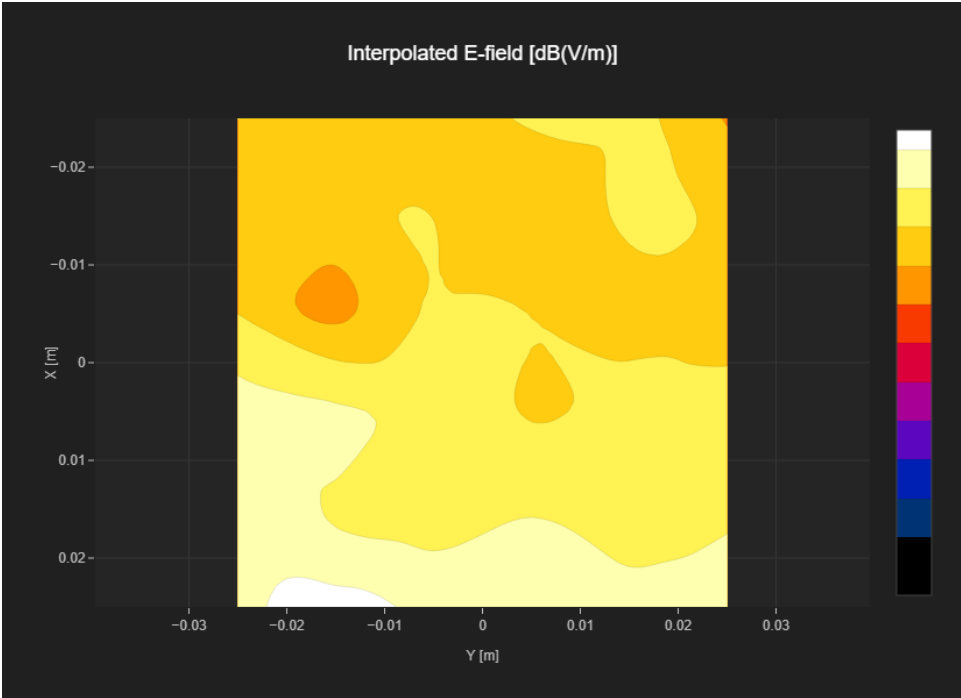
| | |
|-----------------------------|-------------------------------|
| MIF | 1.15 |
| Channel Frequency [MHz] | 512 1850.2 |
| Communication Systems' Name | GPRS-FDD (TDMA, GMSK, TN 0-1) |

Grid Settings

| | | | |
|---------------|------|-------------|------|
| Extent X [mm] | 50.0 | Step X [mm] | 10.0 |
| Extent Y [mm] | 50.0 | Step Y [mm] | 10.0 |
| Distance [mm] | 15.0 | | |

Results

| | | | |
|--------------|-------|------------------------|-------|
| Emax [dBV/m] | 15.12 | Eavg 50x50 Max [dBV/m] | 11.55 |
| Drift [dB] | 0.43 | RFail [dBV/m] | 12.7 |



PCS 1900 RF Interference Potential Test Report

Hardware Setup

| | |
|--------------------------|----------------------------------|
| Probe Calibration Date | EF3DV3 - SN4041 March 04, 2025 |
| DAE Calibration Date | DAE4ip Sn1621 April 10, 2025 |
| Software Version | 1.2.6.2199 |

Communication Systems

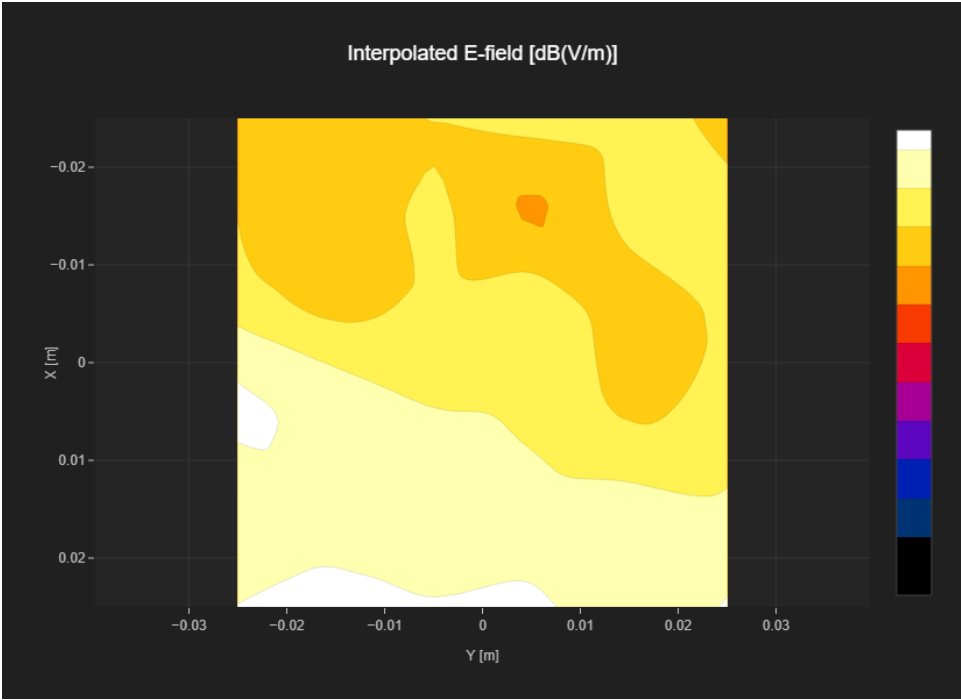
| | |
|-----------------------------|-------------------------------|
| MIF | 1.15 |
| Channel Frequency [MHz] | 661 1880.0 |
| Communication Systems' Name | GPRS-FDD (TDMA, GMSK, TN 0-1) |

Grid Settings

| | | | |
|---------------|------|-------------|------|
| Extent X [mm] | 50.0 | Step X [mm] | 10.0 |
| Extent Y [mm] | 50.0 | Step Y [mm] | 10.0 |
| Distance [mm] | 15.0 | | |

Results

| | | | |
|--------------|-------|------------------------|-------|
| Emax [dBV/m] | 14.56 | Eavg 50x50 Max [dBV/m] | 11.54 |
| Drift [dB] | 0.47 | RFail [dBV/m] | 12.69 |



PCS 1900 RF Interference Potential Test Report

Hardware Setup

Probe | Calibration Date EF3DV3 - SN4041 | March 04, 2025
DAE | Calibration Date DAE4ip Sn1621 | April 10, 2025
Software Version 1.2.6.2199

Communication Systems

MIF 1.15
Channel | Frequency [MHz] 810 | 1909.8
Communication Systems' Name GPRS-FDD (TDMA, GMSK, TN 0-1)

Grid Settings

| | | | |
|---------------|------|-------------|------|
| Extent X [mm] | 50.0 | Step X [mm] | 10.0 |
| Extent Y [mm] | 50.0 | Step Y [mm] | 10.0 |
| Distance [mm] | 15.0 | | |

Results

| | | | |
|--------------|-------|------------------------|-------|
| Emax [dBV/m] | 12.82 | Eavg 50x50 Max [dBV/m] | 11.52 |
| Drift [dB] | 0.06 | RFail [dBV/m] | 12.67 |

