

# PCS 1900 RF Interference Potential Test Report

## Hardware Setup

Probe | Calibration Date      EF3DV3 - SN4041 | March 04, 2025  
DAE | Calibration Date      DAE4ip Sn1621 | April 10, 2025  
Software Version      1.2.6.2199

## Communication Systems

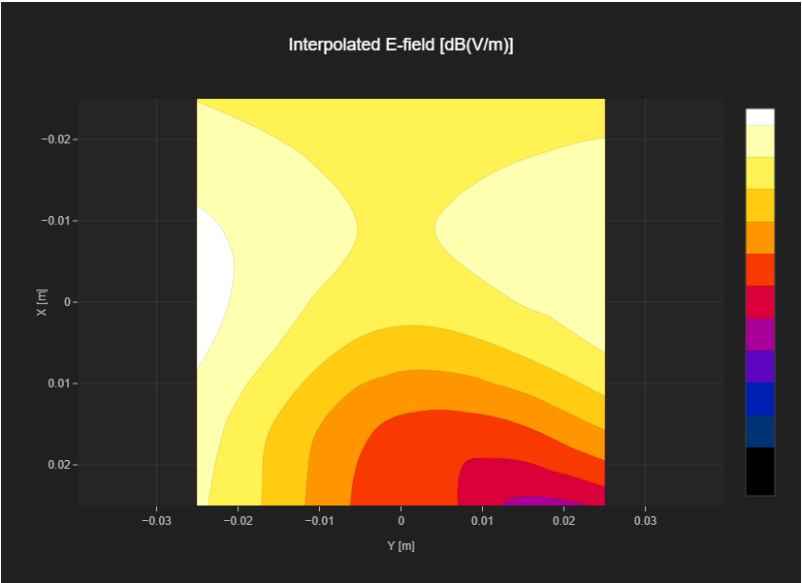
MIF      3.8  
Channel | Frequency [MHz]      512 | 1850.2  
Communication Systems' Name      GPRS-FDD (TDMA, GMSK, TN 0)

## Grid Settings

Extent X [mm]	50.0	Step X [mm]	10.0
Extent Y [mm]	50.0	Step Y [mm]	10.0
Distance [mm]	15.0		

## Results

Emax [dBV/m]	23.63	Eavg 50x50 Max [dBV/m]	20.15
Drift [dB]	-0.11	RFail [dBV/m]	23.95



PCS 1900 RF Interference Potential Test Report

Hardware Setup

Probe   Calibration Date	EF3DV3 - SN4041   March 04, 2025
DAE   Calibration Date	DAE4ip Sn1621   April 10, 2025
Software Version	1.2.6.2199

Communication Systems

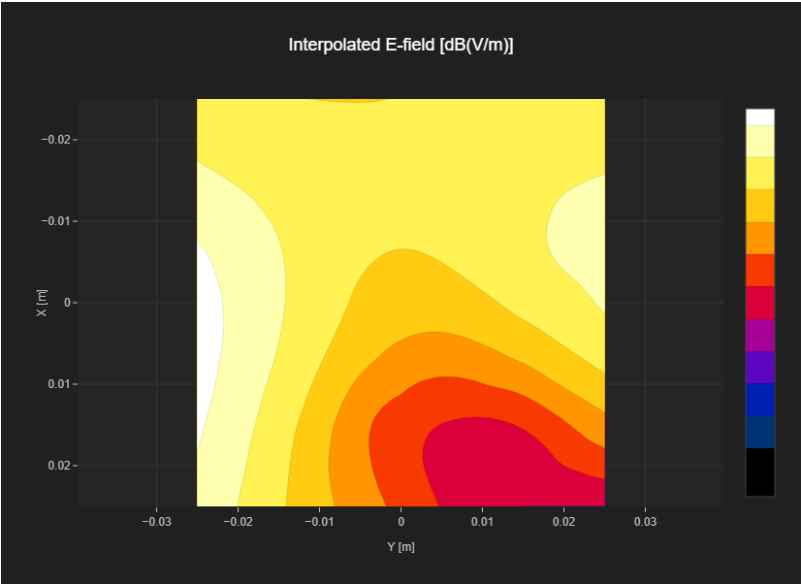
MIF	3.8
Channel   Frequency [MHz]	661   1880.0
Communication Systems' Name	GPRS-FDD (TDMA, GMSK, TN 0)

Grid Settings

Extent X [mm]	50.0	Step X [mm]	10.0
Extent Y [mm]	50.0	Step Y [mm]	10.0
Distance [mm]	15.0		

Results

Emax [dBV/m]	25.2	Eavg 50x50 Max [dBV/m]	21.02
Drift [dB]	-0.12	RFail [dBV/m]	24.82



# PCS 1900 RF Interference Potential Test Report

## Hardware Setup

Probe | Calibration Date      EF3DV3 - SN4041 | March 04, 2025  
DAE | Calibration Date      DAE4ip Sn1621 | April 10, 2025  
Software Version      1.2.6.2199

## Communication Systems

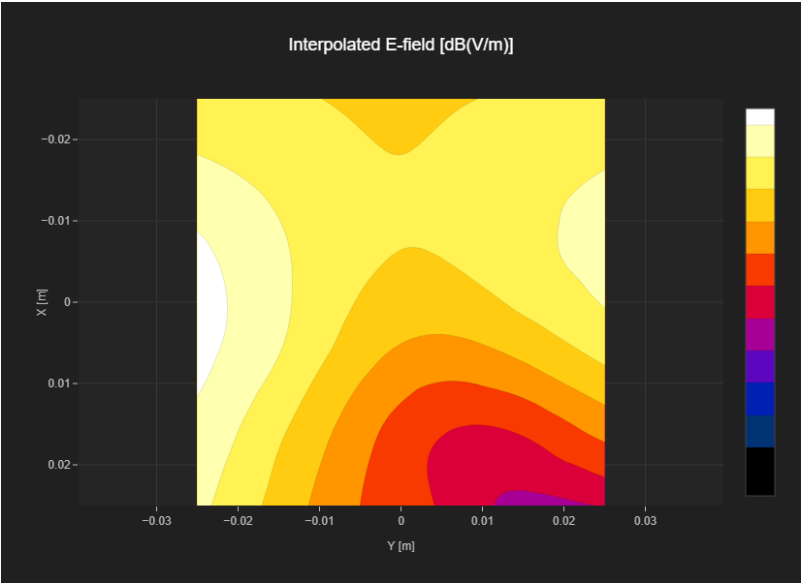
MIF      3.8  
Channel | Frequency [MHz]      810 | 1909.8  
Communication Systems' Name      GPRS-FDD (TDMA, GMSK, TN 0)

## Grid Settings

Extent X [mm]	50.0	Step X [mm]	10.0
Extent Y [mm]	50.0	Step Y [mm]	10.0
Distance [mm]	15.0		

## Results

Emax [dBV/m]	25.52	Eavg 50x50 Max [dBV/m]	21.29
Drift [dB]	-0.13	RFail [dBV/m]	25.09



PCS 1900 RF Interference Potential Test Report

Hardware Setup

Probe | Calibration Date EF3DV3 - SN4041 | March 04, 2025  
DAE | Calibration Date DAE4ip Sn1621 | April 10, 2025  
Software Version 1.2.6.2199

Communication Systems

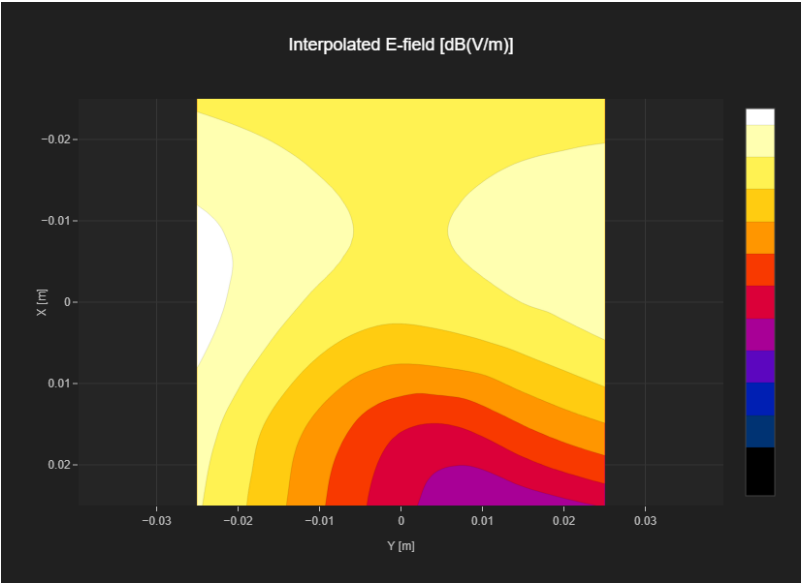
MIF 1.15  
Channel | Frequency [MHz] 512 | 1850.2  
Communication Systems' Name GPRS-FDD (TDMA, GMSK, TN 0-1)

Grid Settings

Extent X [mm]	50.0	Step X [mm]	10.0
Extent Y [mm]	50.0	Step Y [mm]	10.0
Distance [mm]	15.0		

Results

Emax [dBV/m]	26.63	Eavg 50x50 Max [dBV/m]	22.96
Drift [dB]	0.18	RFail [dBV/m]	24.11



# PCS 1900 RF Interference Potential Test Report

## Hardware Setup

Probe   Calibration Date	EF3DV3 - SN4041   March 04, 2025
DAE   Calibration Date	DAE4ip Sn1621   April 10, 2025
Software Version	1.2.6.2199

## Communication Systems

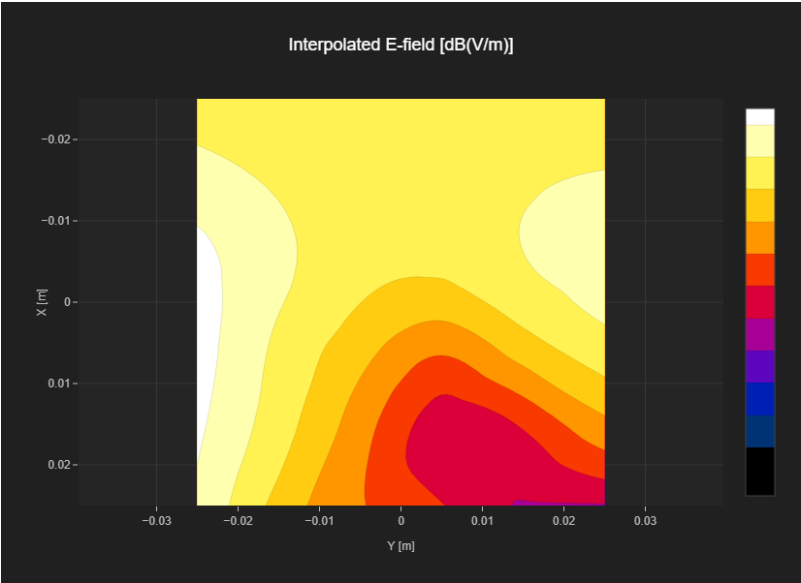
MIF	1.15
Channel   Frequency [MHz]	661   1880.0
Communication Systems' Name	GPRS-FDD (TDMA, GMSK, TN 0-1)

## Grid Settings

Extent X [mm]	50.0	Step X [mm]	10.0
Extent Y [mm]	50.0	Step Y [mm]	10.0
Distance [mm]	15.0		

## Results

Emax [dBV/m]	27.58	Eavg 50x50 Max [dBV/m]	23.52
Drift [dB]	0.25	RFail [dBV/m]	24.67



# PCS 1900 RF Interference Potential Test Report

## Hardware Setup

Probe   Calibration Date	EF3DV3 - SN4041   March 04, 2025
DAE   Calibration Date	DAE4ip Sn1621   April 10, 2025
Software Version	1.2.6.2199

## Communication Systems

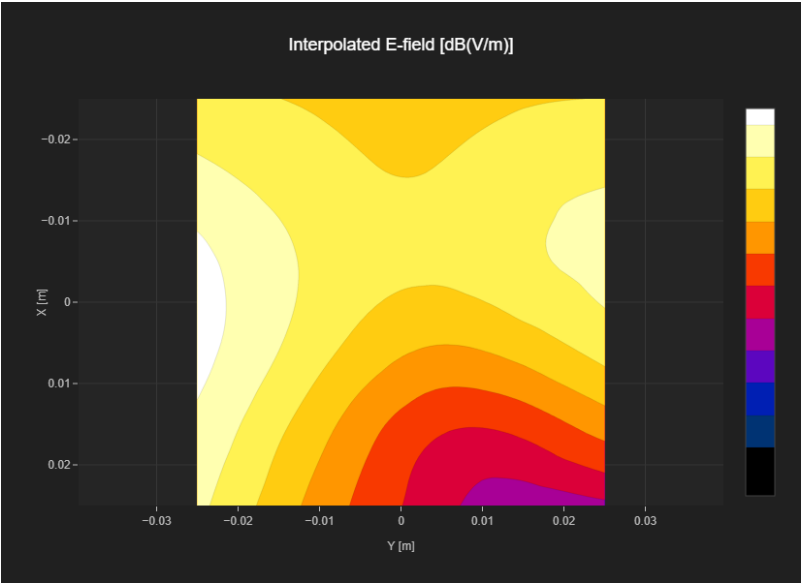
MIF	1.15
Channel   Frequency [MHz]	810   1909.8
Communication Systems' Name	GPRS-FDD (TDMA, GMSK, TN 0-1)

## Grid Settings

Extent X [mm]	50.0	Step X [mm]	10.0
Extent Y [mm]	50.0	Step Y [mm]	10.0
Distance [mm]	15.0		

## Results

Emax [dBV/m]	28.02	Eavg 50x50 Max [dBV/m]	23.81
Drift [dB]	0.5	RFail [dBV/m]	24.96



# PCS 1900 RF Interference Potential Test Report

## Hardware Setup

Probe   Calibration Date	EF3DV3 - SN4041   March 04, 2025
DAE   Calibration Date	DAE4ip Sn1621   April 10, 2025
Software Version	1.2.6.2199

## Communication Systems

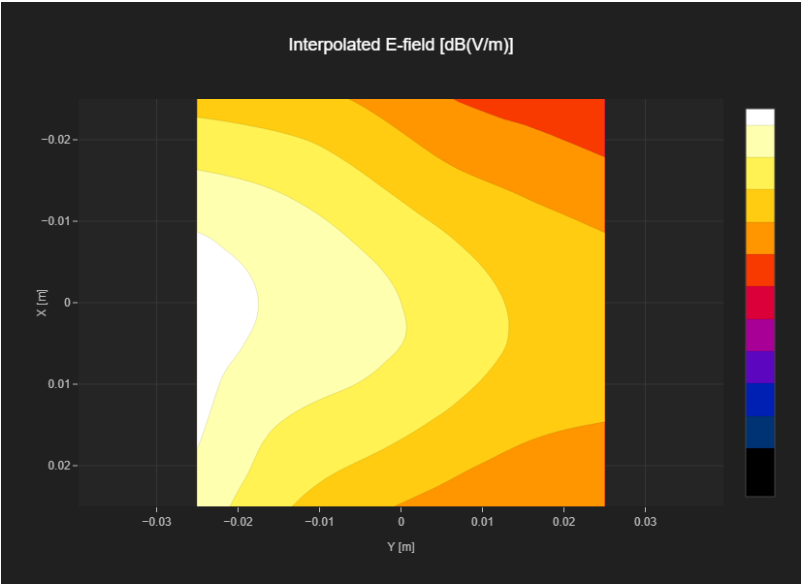
MIF	3.8
Channel   Frequency [MHz]	512   1850.2
Communication Systems' Name	GPRS-FDD (TDMA, GMSK, TN 0)

## Grid Settings

Extent X [mm]	50.0	Step X [mm]	10.0
Extent Y [mm]	50.0	Step Y [mm]	10.0
Distance [mm]	15.0		

## Results

Emax [dBV/m]	30.6	Eavg 50x50 Max [dBV/m]	26.86
Drift [dB]	-0.01	RFail [dBV/m]	30.66



PCS 1900 RF Interference Potential Test Report

Hardware Setup

Probe | Calibration Date EF3DV3 - SN4041 | March 04, 2025  
DAE | Calibration Date DAE4ip Sn1621 | April 10, 2025  
Software Version 1.2.6.2199

Communication Systems

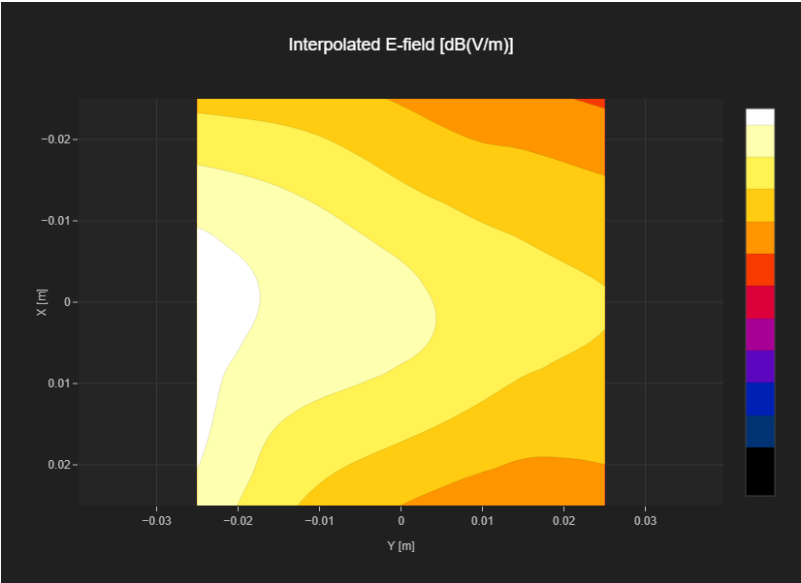
MIF 3.8  
Channel | Frequency [MHz] 661 | 1880.0  
Communication Systems' Name GPRS-FDD (TDMA, GMSK, TN 0)

Grid Settings

Extent X [mm]	50.0	Step X [mm]	10.0
Extent Y [mm]	50.0	Step Y [mm]	10.0
Distance [mm]	15.0		

Results

Emax [dBV/m]	31.25	Eavg 50x50 Max [dBV/m]	27.86
Drift [dB]	0.01	RFail [dBV/m]	31.66





# PCS 1900 RF Interference Potential Test Report

## Hardware Setup

Probe | Calibration Date      EF3DV3 - SN4041 | March 04, 2025  
DAE | Calibration Date      DAE4ip Sn1621 | April 10, 2025  
Software Version      1.2.6.2199

## Communication Systems

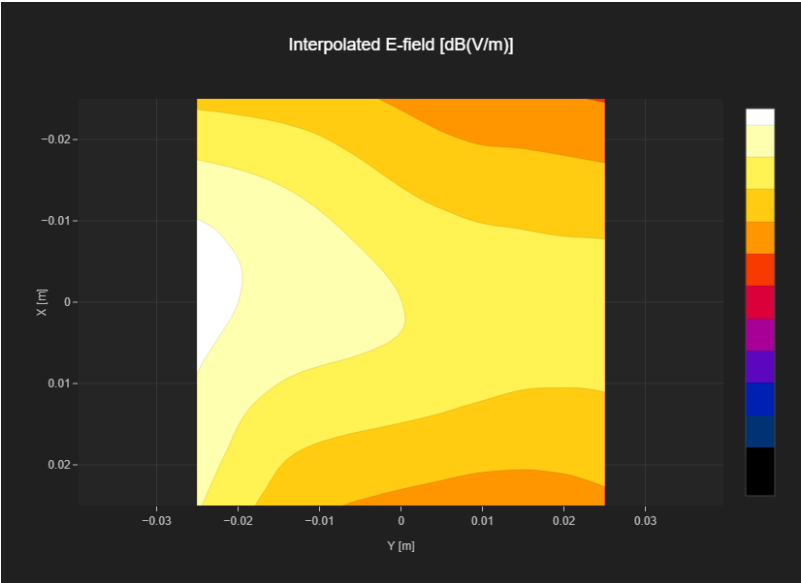
MIF      3.8  
Channel | Frequency [MHz]      810 | 1909.8  
Communication Systems' Name      GPRS-FDD (TDMA, GMSK, TN 0)

## Grid Settings

Extent X [mm]	50.0	Step X [mm]	10.0
Extent Y [mm]	50.0	Step Y [mm]	10.0
Distance [mm]	15.0		

## Results

Emax [dBV/m]	31.83	Eavg 50x50 Max [dBV/m]	28.24
Drift [dB]	-0.06	RFail [dBV/m]	32.04



# PCS 1900 RF Interference Potential Test Report

## Hardware Setup

Probe | Calibration Date      EF3DV3 - SN4041 | March 04, 2025  
DAE | Calibration Date      DAE4ip Sn1621 | April 10, 2025  
Software Version      1.2.6.2199

## Communication Systems

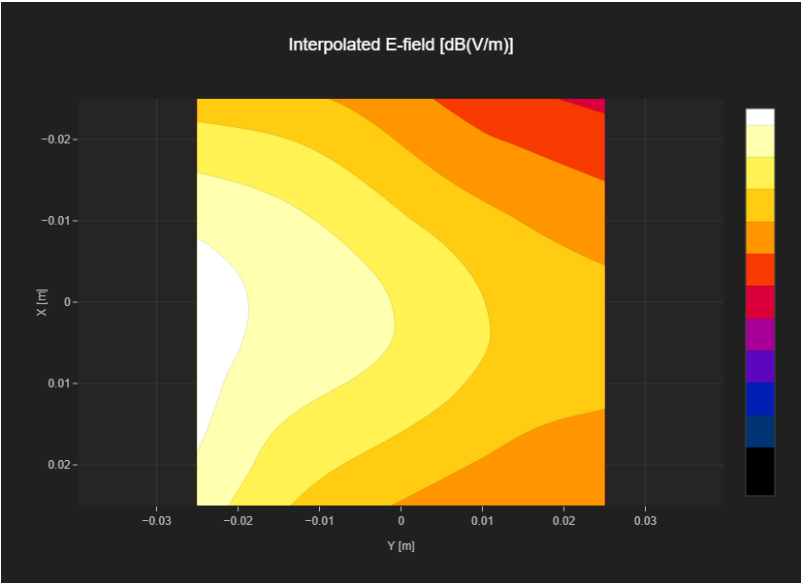
MIF      1.15  
Channel | Frequency [MHz]      512 | 1850.2  
Communication Systems' Name      GPRS-FDD (TDMA, GMSK, TN 0-1)

## Grid Settings

Extent X [mm]	50.0	Step X [mm]	10.0
Extent Y [mm]	50.0	Step Y [mm]	10.0
Distance [mm]	15.0		

## Results

Emax [dBV/m]	33.7	Eavg 50x50 Max [dBV/m]	29.78
Drift [dB]	0.07	RFail [dBV/m]	30.93



PCS 1900 RF Interference Potential Test Report

Hardware Setup

Probe | Calibration Date EF3DV3 - SN4041 | March 04, 2025  
DAE | Calibration Date DAE4ip Sn1621 | April 10, 2025  
Software Version 1.2.6.2199

Communication Systems

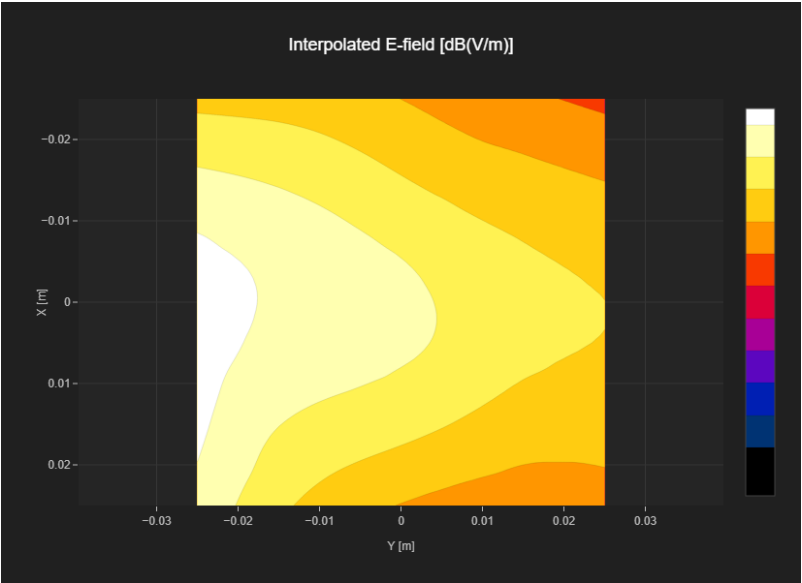
MIF 1.15  
Channel | Frequency [MHz] 661 | 1880.0  
Communication Systems' Name GPRS-FDD (TDMA, GMSK, TN 0-1)

Grid Settings

Extent X [mm]	50.0	Step X [mm]	10.0
Extent Y [mm]	50.0	Step Y [mm]	10.0
Distance [mm]	15.0		

Results

Emax [dBV/m]	34.07	Eavg 50x50 Max [dBV/m]	30.7
Drift [dB]	-0.0	RFail [dBV/m]	31.85



PCS 1900 RF Interference Potential Test Report

Hardware Setup

Probe | Calibration Date EF3DV3 - SN4041 | March 04, 2025  
DAE | Calibration Date DAE4ip Sn1621 | April 10, 2025  
Software Version 1.2.6.2199

Communication Systems

MIF 1.15  
Channel | Frequency [MHz] 810 | 1909.8  
Communication Systems' Name GPRS-FDD (TDMA, GMSK, TN 0-1)

Grid Settings

Extent X [mm]	50.0	Step X [mm]	10.0
Extent Y [mm]	50.0	Step Y [mm]	10.0
Distance [mm]	15.0		

Results

Emax [dBV/m]	34.84	Eavg 50x50 Max [dBV/m]	31.16
Drift [dB]	0.01	RFail [dBV/m]	32.31

