

PCS 1900 RF Interference Potential Test Report

Hardware Setup

Probe Calibration Date	EF3DV3 - SN4041 March 04, 2025
DAE Calibration Date	DAE4ip Sn1621 April 10, 2025
Software Version	1.2.6.2199

Communication Systems

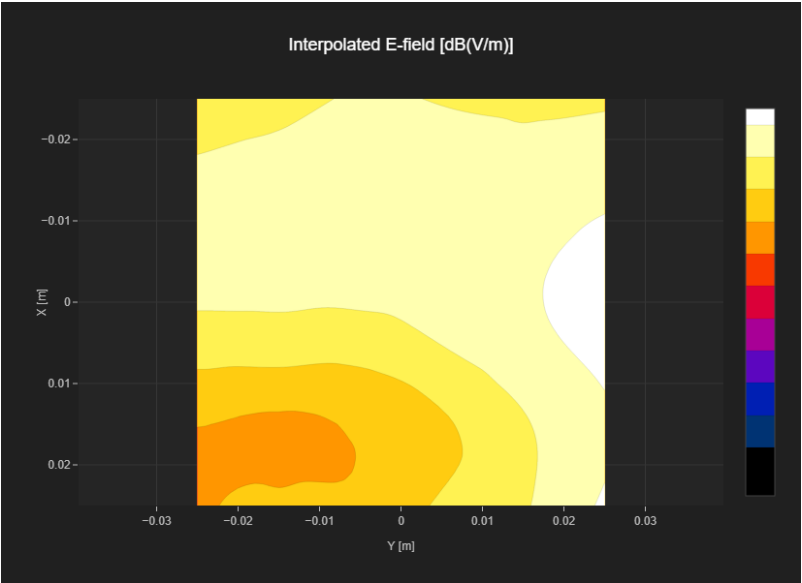
MIF	3.8
Channel Frequency [MHz]	512 1850.2
Communication Systems' Name	GPRS-FDD (TDMA, GMSK, TN 0)

Grid Settings

Extent X [mm]	50.0	Step X [mm]	10.0
Extent Y [mm]	50.0	Step Y [mm]	10.0
Distance [mm]	15.0		

Results

Emax [dBV/m]	19.48	Eavg 50x50 Max [dBV/m]	18.42
Drift [dB]	0.24	RFail [dBV/m]	22.22



PCS 1900 RF Interference Potential Test Report

Hardware Setup

Probe | Calibration Date EF3DV3 - SN4041 | March 04, 2025
DAE | Calibration Date DAE4ip Sn1621 | April 10, 2025
Software Version 1.2.6.2199

Communication Systems

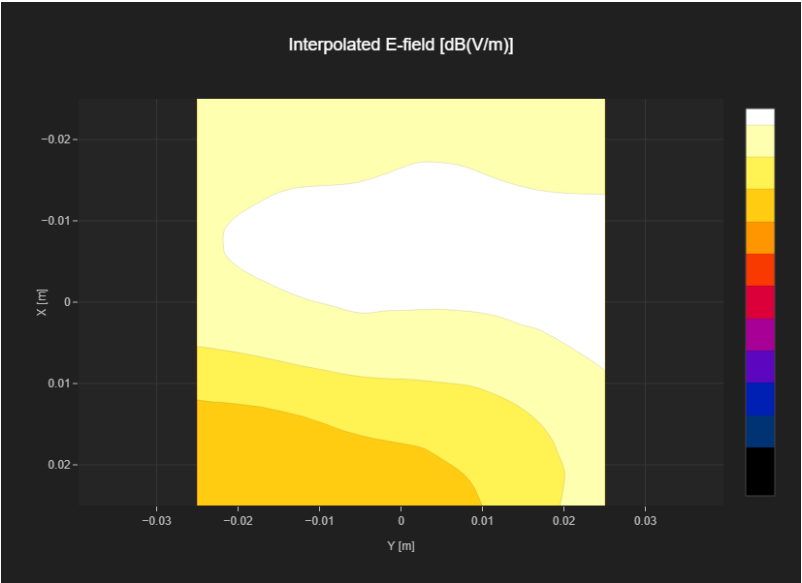
MIF 3.8
Channel | Frequency [MHz] 661 | 1880.0
Communication Systems' Name GPRS-FDD (TDMA, GMSK, TN 0)

Grid Settings

Extent X [mm] 50.0 Step X [mm] 10.0
Extent Y [mm] 50.0 Step Y [mm] 10.0
Distance [mm] 15.0

Results

Emax [dBV/m] 20.7 Eavg 50x50 Max [dBV/m] 19.02
Drift [dB] 0.23 RFail [dBV/m] 22.82



PCS 1900 RF Interference Potential Test Report

Hardware Setup

Probe | Calibration Date EF3DV3 - SN4041 | March 04, 2025
DAE | Calibration Date DAE4ip Sn1621 | April 10, 2025
Software Version 1.2.6.2199

Communication Systems

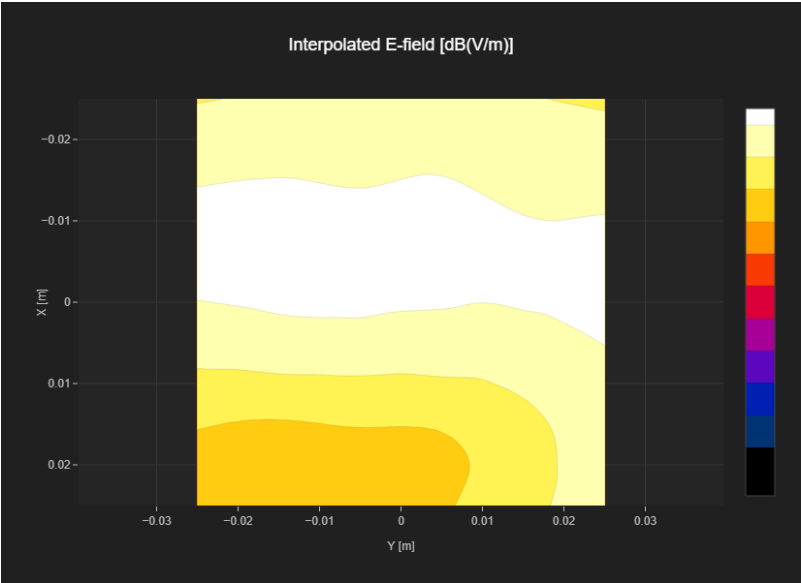
MIF 3.8
Channel | Frequency [MHz] 810 | 1909.8
Communication Systems' Name GPRS-FDD (TDMA, GMSK, TN 0)

Grid Settings

Extent X [mm] 50.0 Step X [mm] 10.0
Extent Y [mm] 50.0 Step Y [mm] 10.0
Distance [mm] 15.0

Results

Emax [dBV/m] 21.01 Eavg 50x50 Max [dBV/m] 19.28
Drift [dB] 0.01 RFail [dBV/m] 23.08



PCS 1900 RF Interference Potential Test Report

Hardware Setup

Probe | Calibration Date EF3DV3 - SN4041 | March 04, 2025
DAE | Calibration Date DAE4ip Sn1621 | April 10, 2025
Software Version 1.2.6.2199

Communication Systems

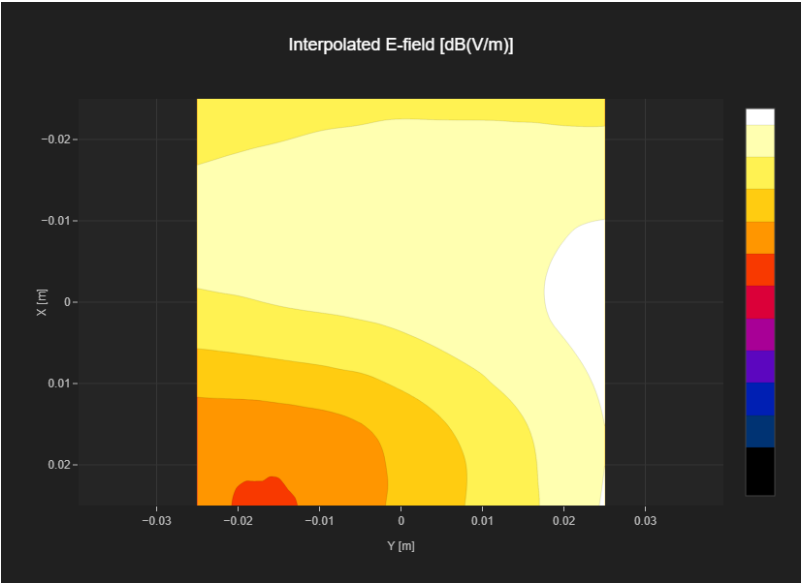
MIF 1.15
Channel | Frequency [MHz] 512 | 1850.2
Communication Systems' Name GPRS-FDD (TDMA, GMSK, TN 0-1)

Grid Settings

Extent X [mm]	50.0	Step X [mm]	10.0
Extent Y [mm]	50.0	Step Y [mm]	10.0
Distance [mm]	15.0		

Results

Emax [dBV/m]	21.5	Eavg 50x50 Max [dBV/m]	20.37
Drift [dB]	0.22	RFail [dBV/m]	21.52



PCS 1900 RF Interference Potential Test Report

Hardware Setup

Probe | Calibration Date EF3DV3 - SN4041 | March 04, 2025
DAE | Calibration Date DAE4ip Sn1621 | April 10, 2025
Software Version 1.2.6.2199

Communication Systems

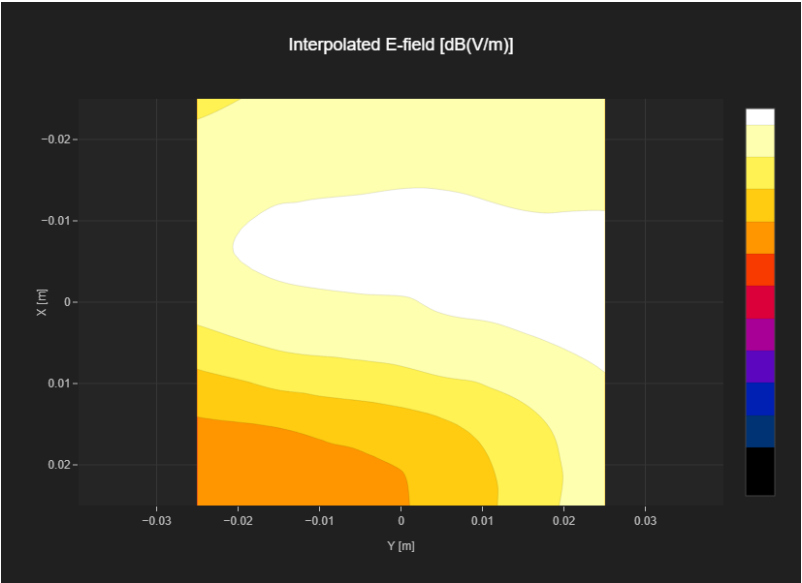
MIF 1.15
Channel | Frequency [MHz] 661 | 1880.0
Communication Systems' Name GPRS-FDD (TDMA, GMSK, TN 0-1)

Grid Settings

Extent X [mm] 50.0 Step X [mm] 10.0
Extent Y [mm] 50.0 Step Y [mm] 10.0
Distance [mm] 15.0

Results

Emax [dBV/m] 22.61 Eavg 50x50 Max [dBV/m] 21.06
Drift [dB] 0.05 RFail [dBV/m] 22.21



PCS 1900 RF Interference Potential Test Report

Hardware Setup

Probe | Calibration Date EF3DV3 - SN4041 | March 04, 2025
DAE | Calibration Date DAE4ip Sn1621 | April 10, 2025
Software Version 1.2.6.2199

Communication Systems

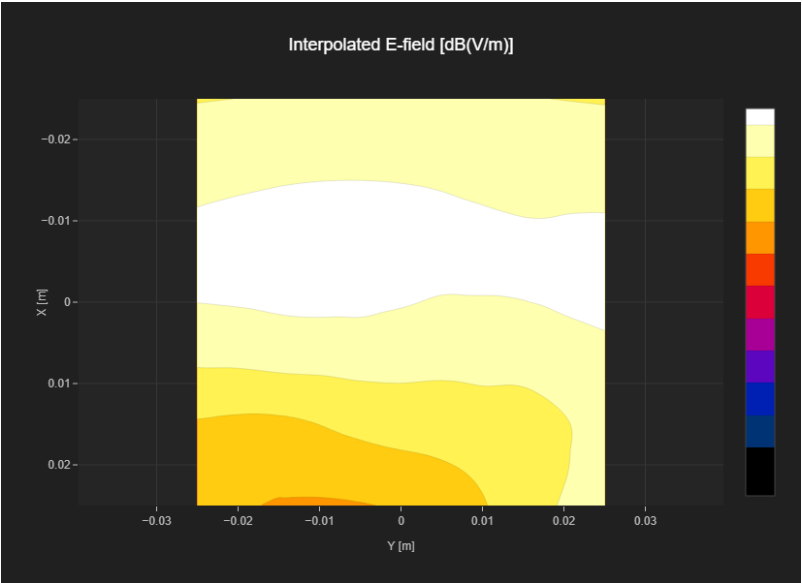
MIF 1.15
Channel | Frequency [MHz] 810 | 1909.8
Communication Systems' Name GPRS-FDD (TDMA, GMSK, TN 0-1)

Grid Settings

Extent X [mm] 50.0 Step X [mm] 10.0
Extent Y [mm] 50.0 Step Y [mm] 10.0
Distance [mm] 15.0

Results

Emax [dBV/m] 23.03 Eavg 50x50 Max [dBV/m] 21.24
Drift [dB] 0.24 RFail [dBV/m] 22.39



PCS 1900 RF Interference Potential Test Report

Hardware Setup

Probe | Calibration Date EF3DV3 - SN4041 | March 04, 2025
DAE | Calibration Date DAE4ip Sn1621 | April 10, 2025
Software Version 1.2.6.2199

Communication Systems

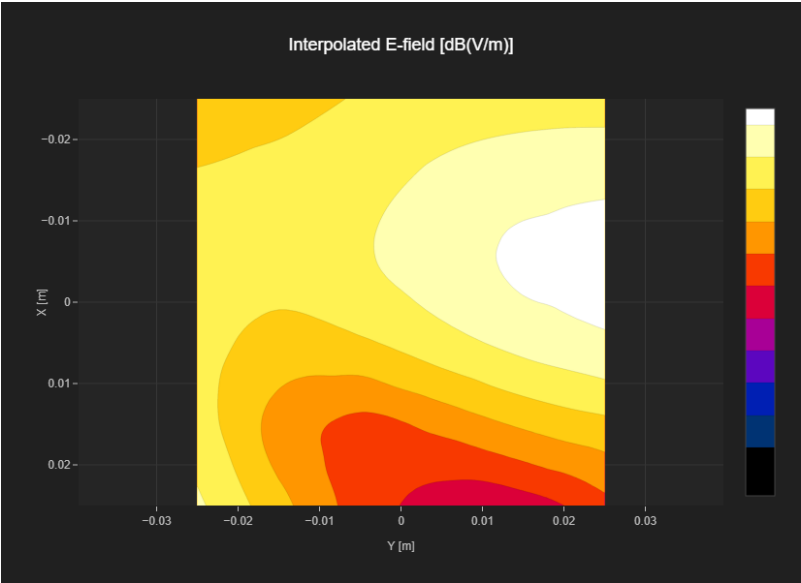
MIF 3.8
Channel | Frequency [MHz] 512 | 1850.2
Communication Systems' Name GPRS-FDD (TDMA, GMSK, TN 0)

Grid Settings

Extent X [mm] 50.0 Step X [mm] 10.0
Extent Y [mm] 50.0 Step Y [mm] 10.0
Distance [mm] 15.0

Results

Emax [dBV/m] 25.85 Eavg 50x50 Max [dBV/m] 22.15
Drift [dB] -0.11 RFail [dBV/m] 25.95



PCS 1900 RF Interference Potential Test Report

Hardware Setup

Probe | Calibration Date EF3DV3 - SN4041 | March 04, 2025
DAE | Calibration Date DAE4ip Sn1621 | April 10, 2025
Software Version 1.2.6.2199

Communication Systems

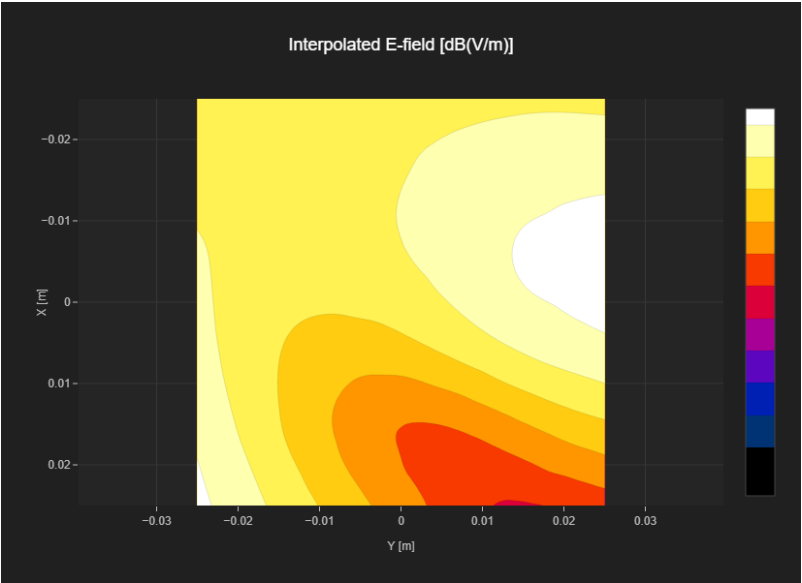
MIF 3.8
Channel | Frequency [MHz] 661 | 1880.0
Communication Systems' Name GPRS-FDD (TDMA, GMSK, TN 0)

Grid Settings

Extent X [mm] 50.0 Step X [mm] 10.0
Extent Y [mm] 50.0 Step Y [mm] 10.0
Distance [mm] 15.0

Results

Emax [dBV/m] 25.57 Eavg 50x50 Max [dBV/m] 22.25
Drift [dB] -0.09 RFail [dBV/m] 26.05



PCS 1900 RF Interference Potential Test Report

Hardware Setup

Probe | Calibration Date EF3DV3 - SN4041 | March 04, 2025
DAE | Calibration Date DAE4ip Sn1621 | April 10, 2025
Software Version 1.2.6.2199

Communication Systems

MIF 3.8
Channel | Frequency [MHz] 810 | 1909.8
Communication Systems' Name GPRS-FDD (TDMA, GMSK, TN 0)

Grid Settings

Extent X [mm]	50.0	Step X [mm]	10.0
Extent Y [mm]	50.0	Step Y [mm]	10.0
Distance [mm]	15.0		

Results

Emax [dBV/m]	26.26	Eavg 50x50 Max [dBV/m]	22.74
Drift [dB]	-0.23	RFail [dBV/m]	26.54

