

System Performance Check Report for D2600V2 - SN1006

Exposure Conditions

Frequency [MHz] Channel Number	2600.000 0	TSL Permittivity	42.0
Group UID	CW 0--	TSL Conductivity [S/m]	1.91
Conversion Factor	6.17	Phantom Section TSL	Flat Head Simulating Liquid

Hardware Setup

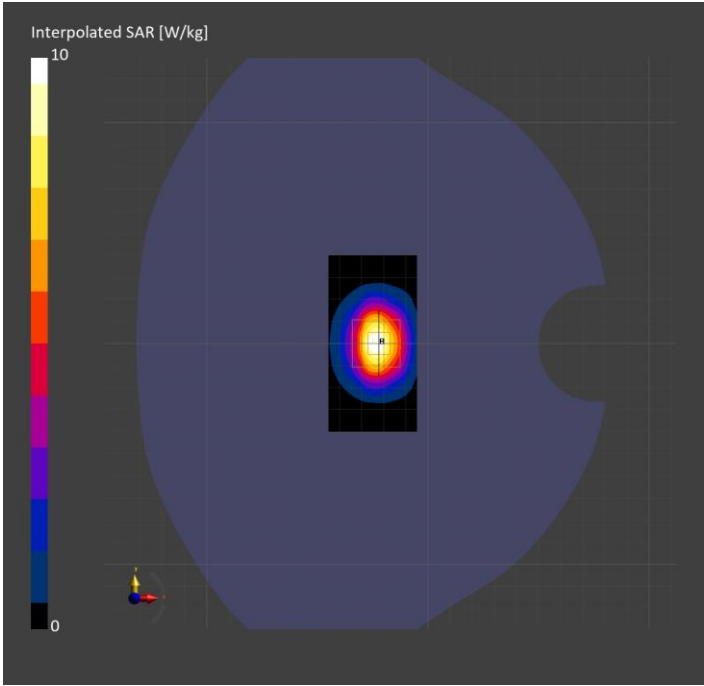
Probe Calibration Date	EX3DV4 - SN3686 2025-01-13	Phantom	Twin-SAM V5.0 (30deg probe tilt)
DAE Calibration Date	DAE4 Sn1357 2025-01-13	TSL Type	HBBL-600-10000
Software Version	16.4.0.5005		

Scans Setup

	Area Scan	Zoom Scan
Grid Extents [mm]	40.0 x 80.0	30.0 x 30.0 x 31.2
Grid Steps [mm]	10.0 x 10.0	5.0 x 5.0 x 1.5
Sensor Surface [mm]	3.0	1.4
Graded Grid	N/A	Yes
M2/M1 [> 30%]		84.0
Dist 3dB Peak [> Grid Steps Δx, Δy mm]		9.0

Measurement Results

	Area Scan	Zoom Scan
psSAR1g [W/Kg]	5.10	5.12
psSAR10g [W/Kg]	2.32	2.40
Power Drift [±0.2 dB]	N/A	0.00



System Performance Check Report for D3700V2 - SN1039

Exposure Conditions

Frequency [MHz] Channel Number	3700.000 0	TSL Permittivity	41.2
Group UID	CW 0--	TSL Conductivity [S/m]	2.84
Conversion Factor	6.46	Phantom Section TSL	Flat Head Simulating Liquid

Hardware Setup

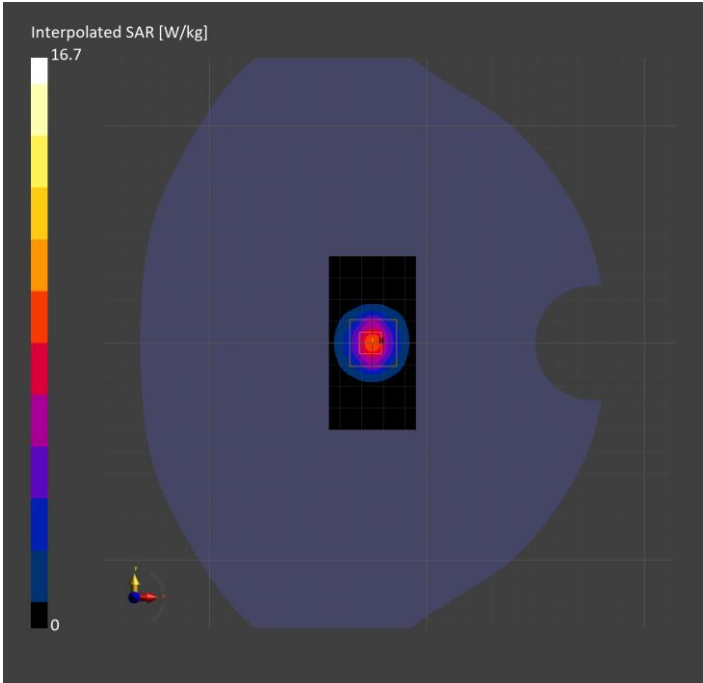
Probe Calibration Date	EX3DV4 - SN3990 Sensor X Disabled 2025-02-07	Phantom	Twin-SAM V5.0 (30deg probe tilt)
DAE Calibration Date	DAE4 Sn1545 2025-02-06	TSL Type	HBBL-600-10000
Software Version	16.4.0.5005		

Scans Setup

	Area Scan	Zoom Scan
Grid Extents [mm]	40.0 x 80.0	30.0 x 30.0 x 29.1
Grid Steps [mm]	10.0 x 10.0	5.0 x 5.0 x 1.4
Sensor Surface [mm]	3.0	1.4
Graded Grid	N/A	Yes
M2/M1 [> 30%]		77.3
Dist 3dB Peak [> Grid Steps Δx, Δy mm]		8.6

Measurement Results

	Area Scan	Zoom Scan
psSAR1g [W/Kg]	6.62	6.64
psSAR10g [W/Kg]	2.44	2.54
Power Drift [±0.2 dB]	N/A	-0.04



System Performance Check Report for D5GHzV2 - SN1168

Exposure Conditions

Frequency [MHz] Channel Number	5750.000 0	TSL Permittivity	35.1
Group UID	CW 0--	TSL Conductivity [S/m]	4.93
Conversion Factor	5.54	Phantom Section TSL	Flat Head Simulating Liquid

Hardware Setup

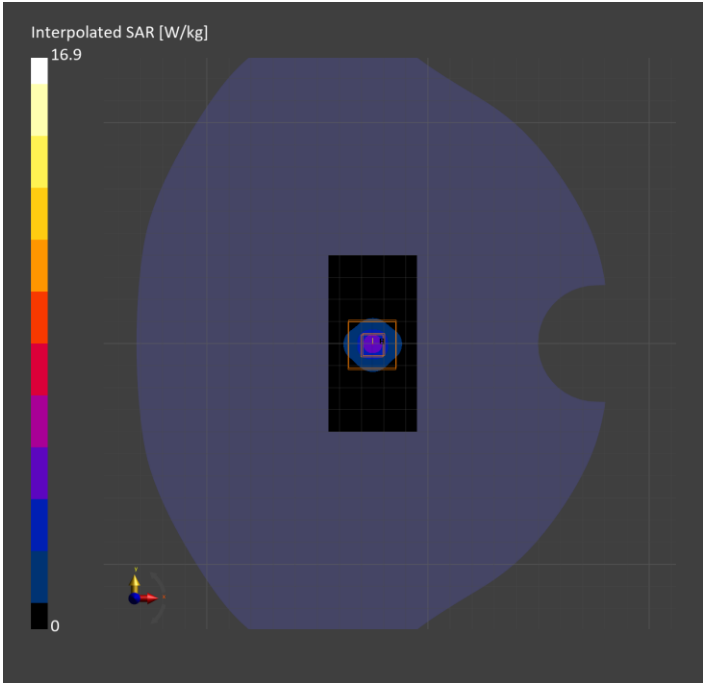
Probe Calibration Date	EX3DV4 - SN7914 2025-03-17	Phantom	Twin-SAM V8.0 (30deg probe tilt)
DAE Calibration Date	DAE4ip Sn1893 2025-03-18	TSL Type	HBBL-600-10000
Software Version	16.4.0.5005		

Scans Setup

	Area Scan	Zoom Scan
Grid Extents [mm]	40.0 x 80.0	24.0 x 28.0 x 22.9
Grid Steps [mm]	10.0 x 10.0	4.0 x 4.0 x 1.4
Sensor Surface [mm]	3.0	1.4
Graded Grid	N/A	Yes
M2/M1 [> 30%]		59.1
Dist 3dB Peak [> Grid Steps Δx, Δy mm]		7.4

Measurement Results

	Area Scan	Zoom Scan
psSAR1g [W/Kg]	3.54	3.79
psSAR10g [W/Kg]	1.00	1.10
Power Drift [±0.2 dB]	N/A	0.01



System Performance Check Report for D5GHzV2 - SN1138

Exposure Conditions

Frequency [MHz] Channel Number	5750.000 0	TSL Permittivity	33.5
Group UID	CW 0--	TSL Conductivity [S/m]	4.98
Conversion Factor	5.54	Phantom Section TSL	Flat Head Simulating Liquid

Hardware Setup

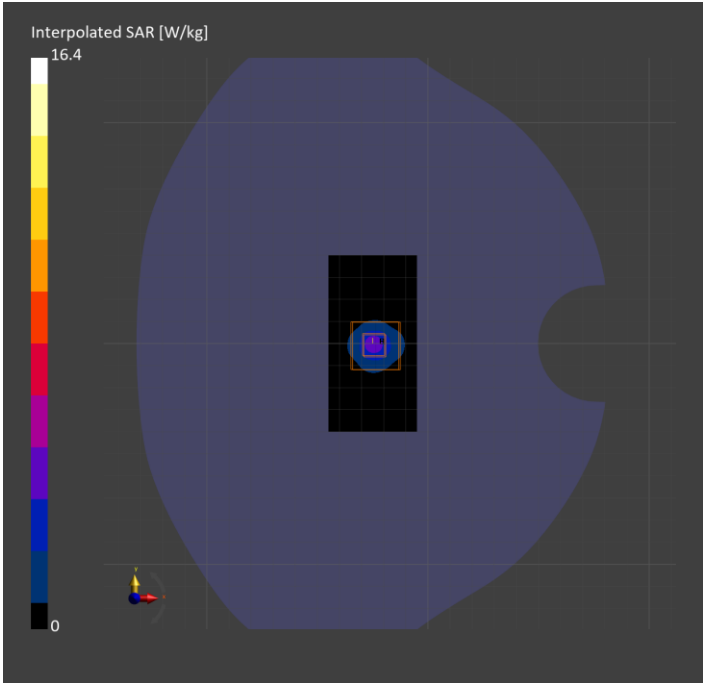
Probe Calibration Date	EX3DV4 - SN7914 2025-03-17	Phantom	Twin-SAM V8.0 (30deg probe tilt)
DAE Calibration Date	DAE4ip Sn1893 2025-03-18	TSL Type	HBBL-600-10000
Software Version	16.4.0.5005		

Scans Setup

	Area Scan	Zoom Scan
Grid Extents [mm]	40.0 x 80.0	32.0 x 32.0 x 22.9
Grid Steps [mm]	10.0 x 10.0	4.0 x 4.0 x 1.4
Sensor Surface [mm]	3.0	1.4
Graded Grid	N/A	Yes
M2/M1 [> 30%]		58.2
Dist 3dB Peak [> Grid Steps Δx, Δy mm]		7.6

Measurement Results

	Area Scan	Zoom Scan
psSAR1g [W/Kg]	3.29	3.65
psSAR10g [W/Kg]	0.952	1.06
Power Drift [±0.2 dB]	N/A	0.09



System Performance Check Report for D1640V2 - SN324

Exposure Conditions

Frequency [MHz] Channel Number	1640.000 0	TSL Permittivity	40.0
Group UID	CW 0--	TSL Conductivity [S/m]	1.21
Conversion Factor	8.8	Phantom Section TSL	Flat Head Simulating Liquid

Hardware Setup

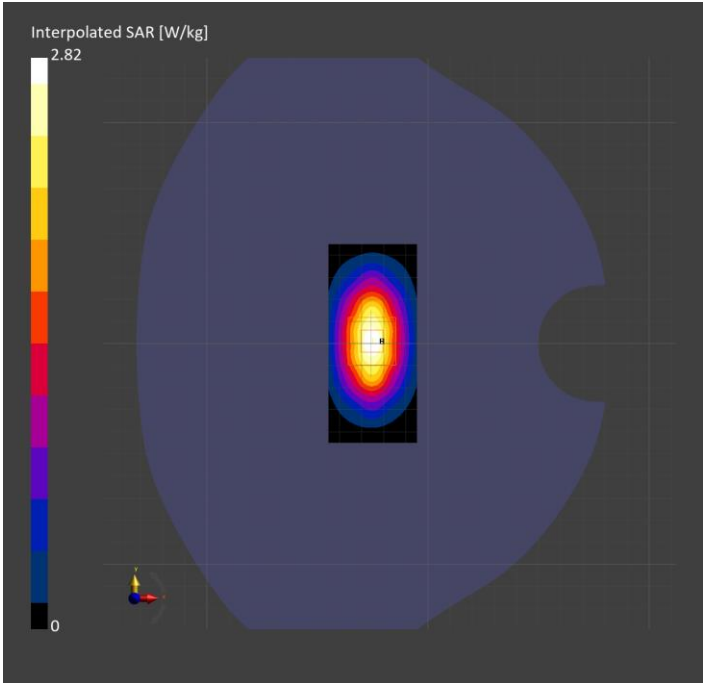
Probe Calibration Date	EX3DV4 - SN7356 2025-03-10	Phantom	Twin-SAM V8.0 (30deg probe tilt)
DAE Calibration Date	DAE4 Sn1239 2025-03-10	TSL Type	HBBL-600-10000
Software Version	16.4.0.5005		

Scans Setup

	Area Scan	Zoom Scan
Grid Extents [mm]	40.0 x 90.0	30.0 x 30.0 x 31.2
Grid Steps [mm]	10.0 x 15.0	6.0 x 6.0 x 1.5
Sensor Surface [mm]	3.0	1.4
Graded Grid	N/A	Yes
M2/M1 [> 30%]		86.2
Dist 3dB Peak [> Grid Steps Δx, Δy mm]		10.8

Measurement Results

	Area Scan	Zoom Scan
psSAR1g [W/Kg]	1.66	1.63
psSAR10g [W/Kg]	0.901	0.895
Power Drift [±0.2 dB]	N/A	-0.15



System Performance Check Report for D1750V2 - SN1050

Exposure Conditions

Frequency [MHz] Channel Number	1750.000 0	TSL Permittivity	38.8
Group UID	CW 0--	TSL Conductivity [S/m]	1.31
Conversion Factor	8.15	Phantom Section TSL	Flat Head Simulating Liquid

Hardware Setup

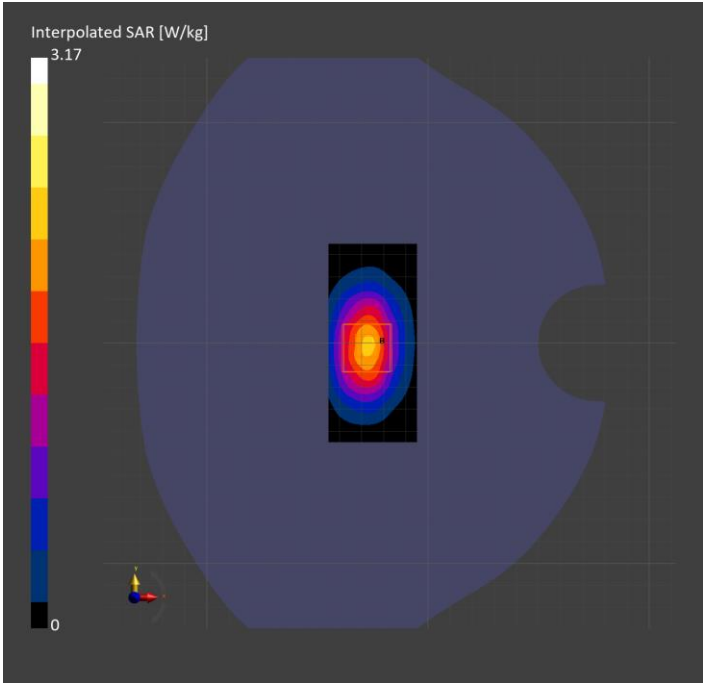
Probe Calibration Date	EX3DV4 - SN7335 2025-01-13	Phantom	Twin-SAM V8.0 (30deg probe tilt)
DAE Calibration Date	DAE4ip Sn1892 2025-03-04	TSL Type	HBBL-600-10000
Software Version	16.4.0.5005		

Scans Setup

	Area Scan	Zoom Scan
Grid Extents [mm]	40.0 x 90.0	30.0 x 30.0 x 31.2
Grid Steps [mm]	10.0 x 15.0	6.0 x 6.0 x 1.5
Sensor Surface [mm]	3.0	1.4
Graded Grid	N/A	Yes
M2/M1 [> 30%]		84.2
Dist 3dB Peak [> Grid Steps Δx, Δy mm]		10.8

Measurement Results

	Area Scan	Zoom Scan
psSAR1g [W/Kg]	1.80	1.79
psSAR10g [W/Kg]	0.983	0.968
Power Drift [±0.2 dB]	-0.13	-0.04



Validation band: CW, FRONT

Exposure Conditions

Band	Validation band	Phantom Section	5G
Frequency [MHz] Channel Number	10000.0 10000	Conversion Factor	1.0
Group UID	CW, 0--	Position Test Distance [mm]	FRONT 10.00

Hardware Setup

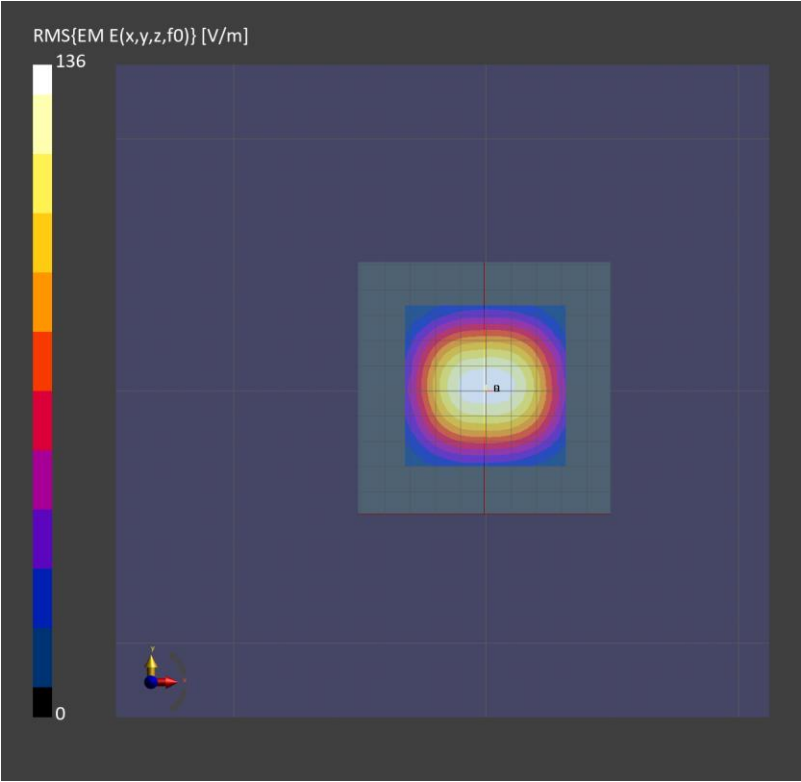
Probe Calibration Date	EUmmWV4 - SN9619_F1-55GHz 2025-03-05	Phantom	mmWave xxxx
DAE Calibration Date	DAE4 Sn1540 2025-01-08	Medium	Air -
Software Version	3.2.2.2358		

Scan Setup

Scan Type	5G Scan	Grid Extents [mm]	60.0 x 60.0
Grid Steps [lambda]	0.125 x 0.125	Sensor Surface [mm]	10.0

Measurement Results

Avg. Area [cm²]	4.00
psPDn+ [W/m²]	40.3
psPDtot+ [W/m²]	40.7
psPDmod+ [W/m²]	40.9
E _{max} [V/m]	132
H _{max} [A/m]	0.356
Power Drift [dB]	-0.04



Validation band: CW, FRONT

Exposure Conditions

Band	Validation band	Phantom Section	5G
Frequency [MHz] Channel Number	10000.0 10000	Conversion Factor	1.0
Group UID	CW, 0--	Position Test Distance [mm]	FRONT 10.00

Hardware Setup

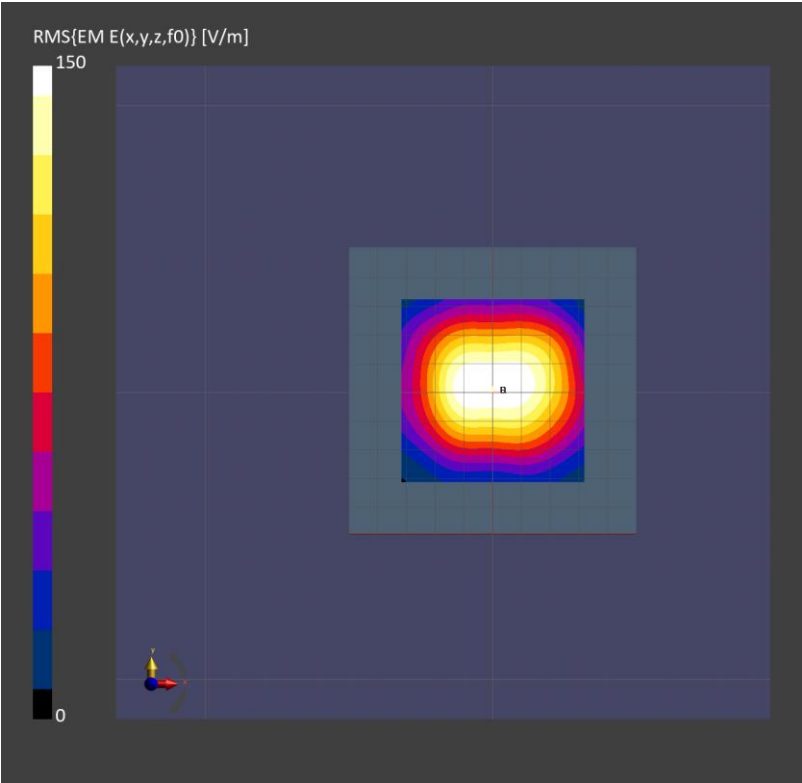
Probe Calibration Date	EUmmWV4 - SN9532_F1-55GHz 2025-02-17	Phantom	mmWave xxxx
DAE Calibration Date	DAE4 Sn1548 2025-02-07	Medium	Air -
Software Version	3.2.2.2358		

Scan Setup

Scan Type	5G Scan	Grid Extents [mm]	60.0 x 60.0
Grid Steps [lambda]	0.125 x 0.125	Sensor Surface [mm]	10.0

Measurement Results

Avg. Area [cm²]	4.00
psPDn+ [W/m²]	54.5
psPDtot+ [W/m²]	55.1
psPDmod+ [W/m²]	55.4
E _{max} [V/m]	150
Power Drift [dB]	0.02



Validation band: CW, FRONT

Exposure Conditions

Band	Validation band	Phantom Section	5G
Frequency [MHz] Channel Number	10000.0 10000	Conversion Factor	1.0
Group UID	CW, 0--	Position Test Distance [mm]	FRONT 10.00

Hardware Setup

Probe Calibration Date	EUmmWV4 - SN9493_F1-55GHz 2025-01-13	Phantom	mmWave xxxx
DAE Calibration Date	DAE4 Sn1716 2025-03-11	Medium	Air -
Software Version	3.2.2.2358		

Scan Setup

Scan Type	5G Scan	Grid Extents [mm]	60.0 x 60.0
Grid Steps [lambda]	0.125 x 0.125	Sensor Surface [mm]	10.0

Measurement Results

Avg. Area [cm²]	4.00
psPDn+ [W/m²]	53.8
psPDtot+ [W/m²]	54.4
psPDmod+ [W/m²]	54.6
E _{max} [V/m]	149
H _{max} [A/m]	0.410
Power Drift [dB]	0.02

