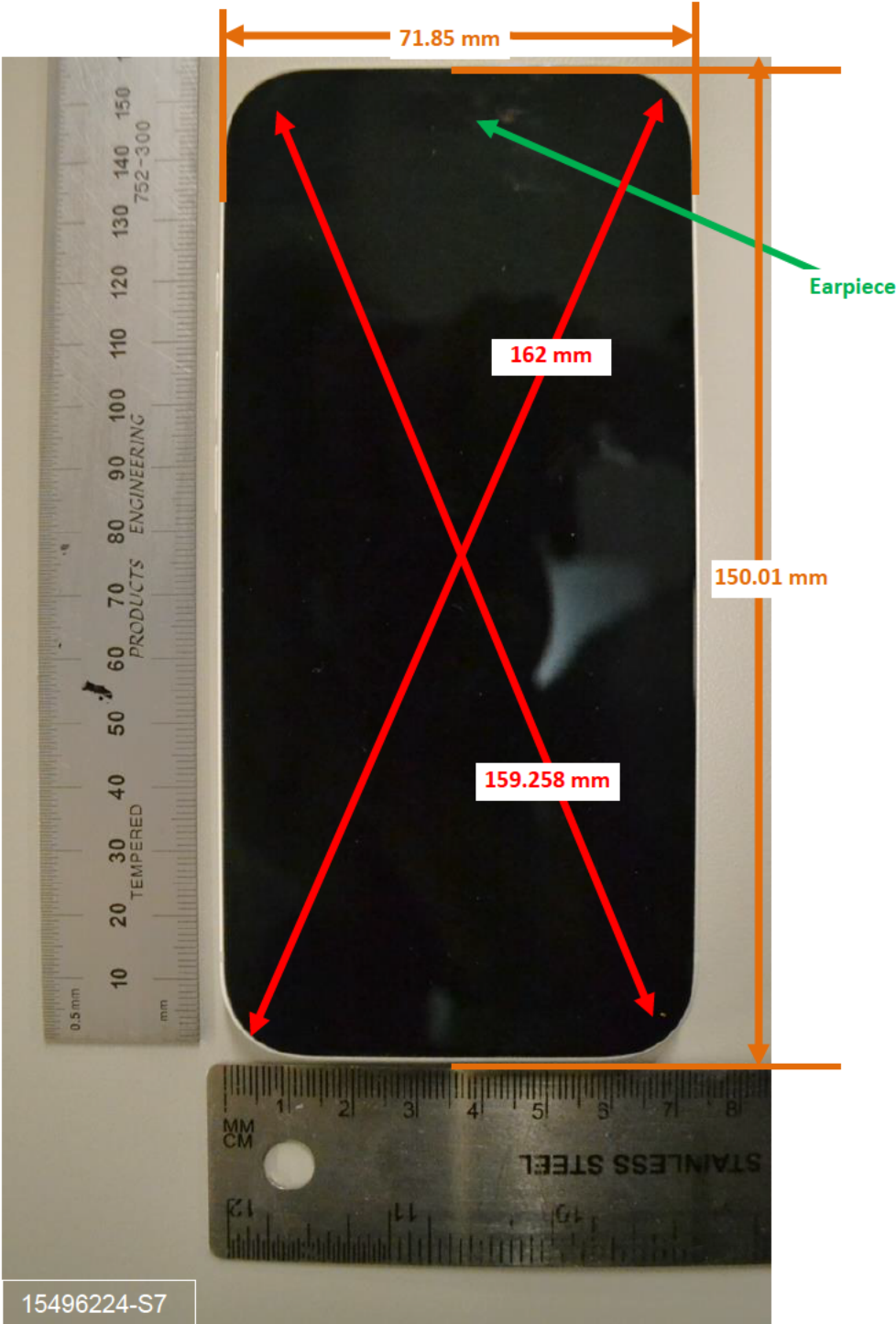


DUT and SAR Set-up Photos

Photograph 1: Overall Dimensions



Photograph 2: Front View of the DUT

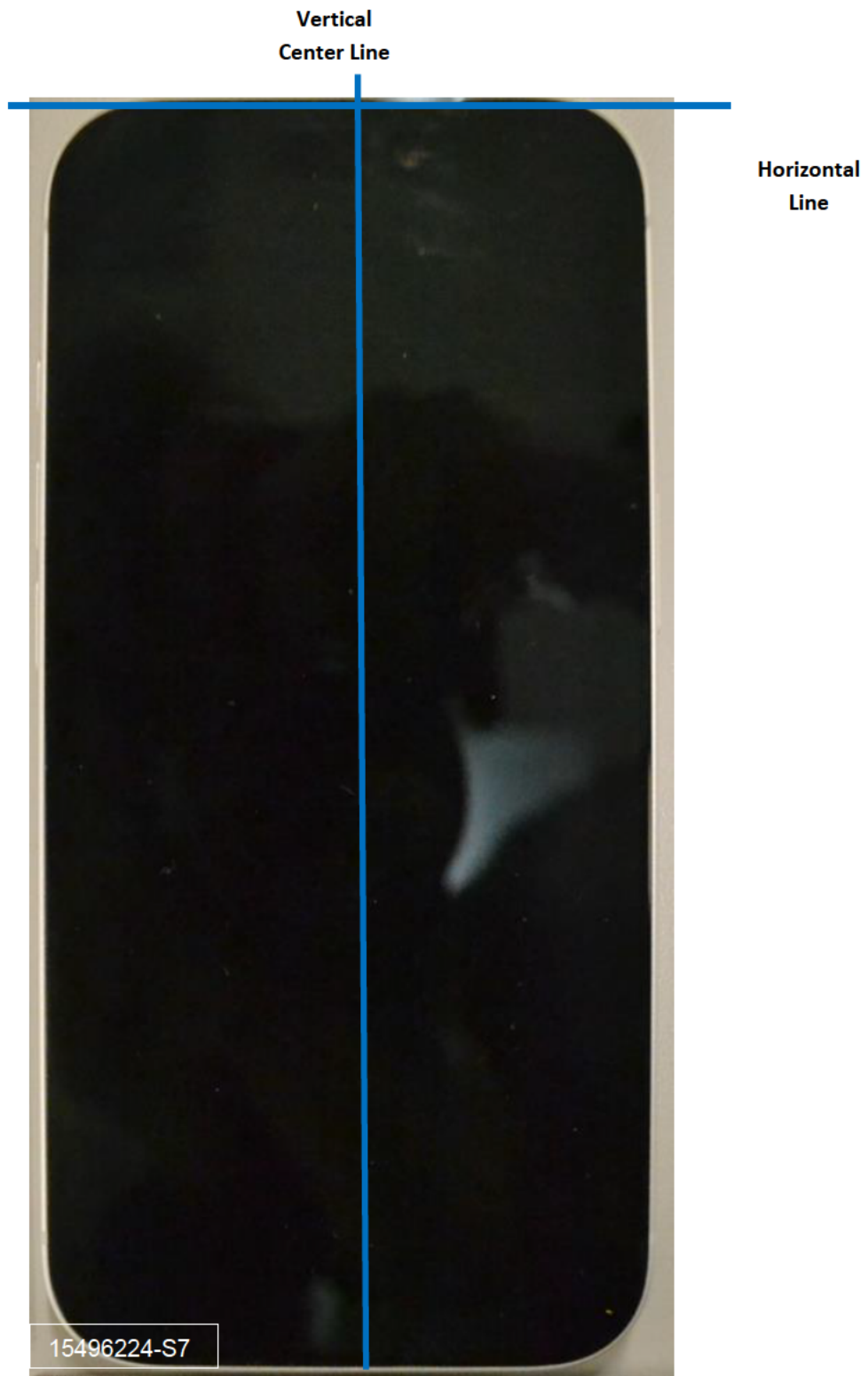


Photograph 3: Back View of the DUT



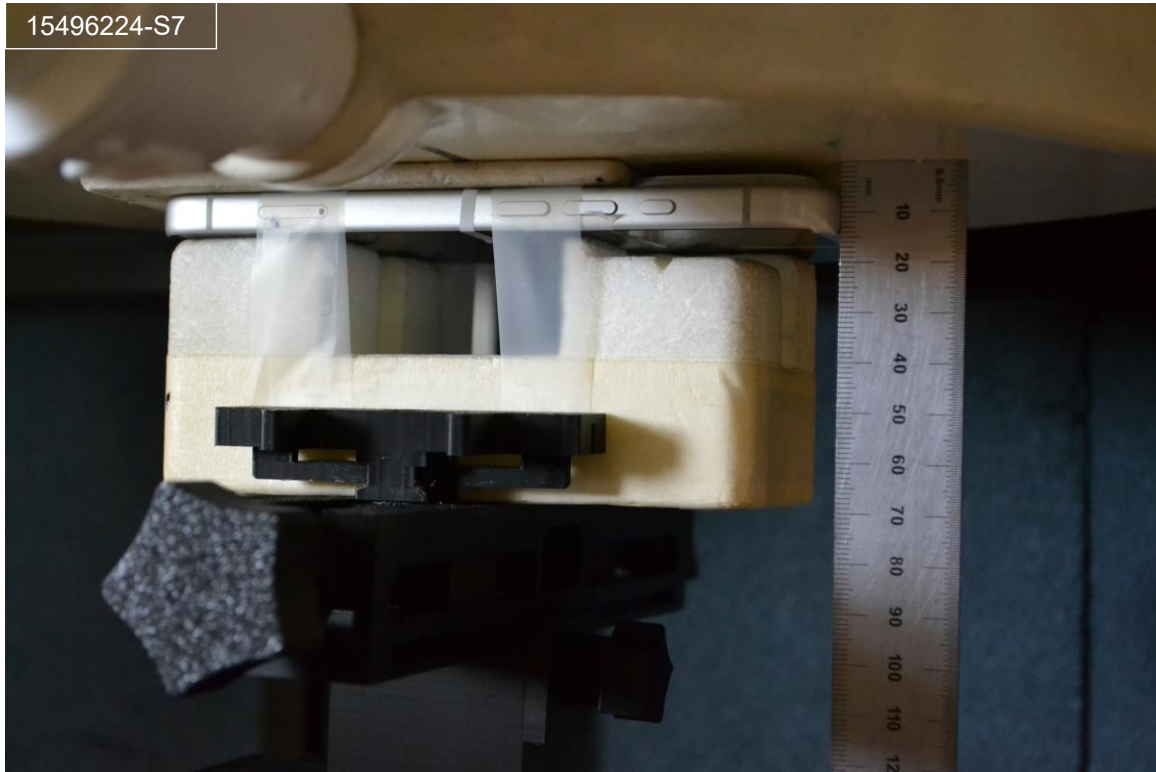
Setup Photos

Photograph 4: Handset Vertical and Horizontal Reference Lines



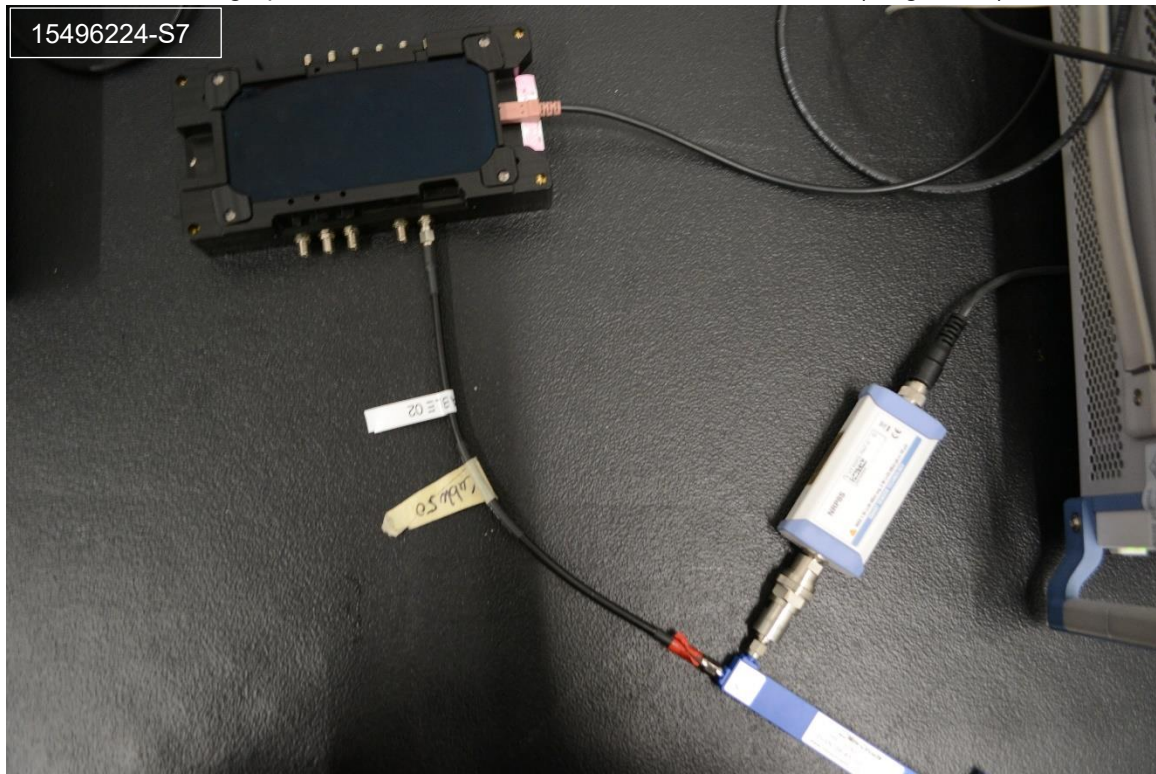
Body-worn Accessory & Hotspot mode Exposure Conditions

Photograph 5: Body & Hotspot, Back, 5 mm

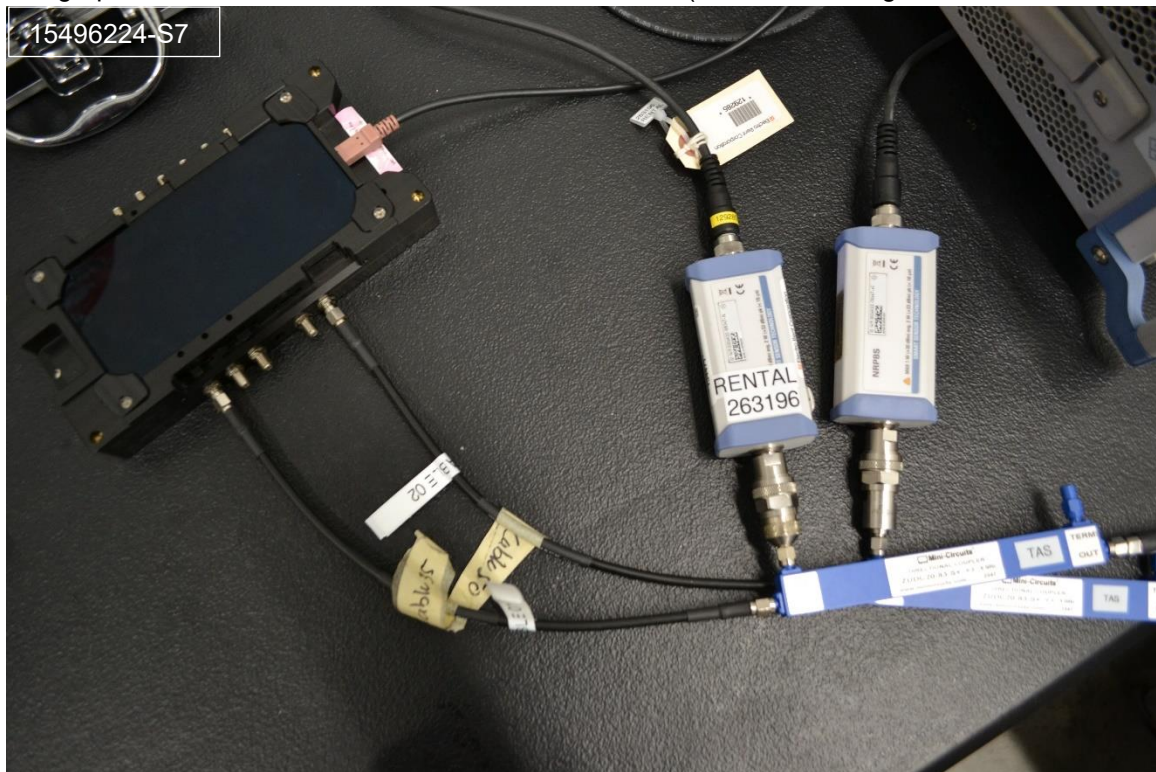


Conducted Setup Photos

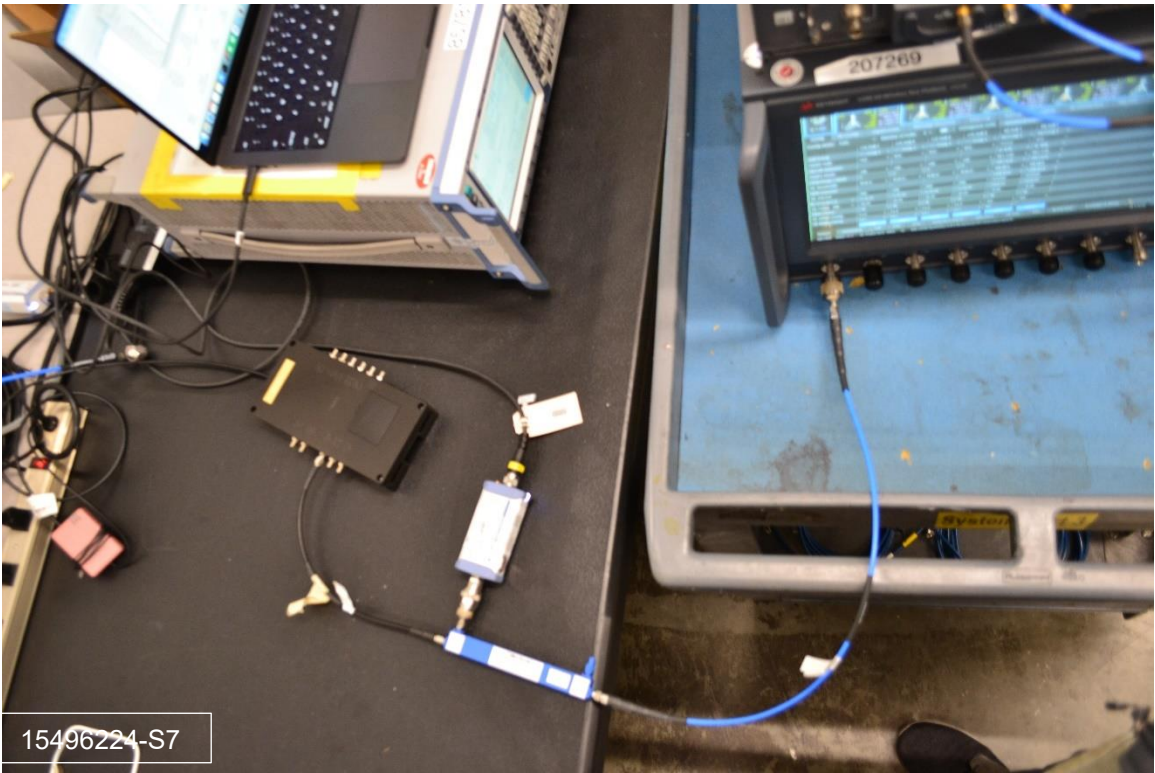
Photograph 6: CMW Conducted Power Test Measurement (Single Port)



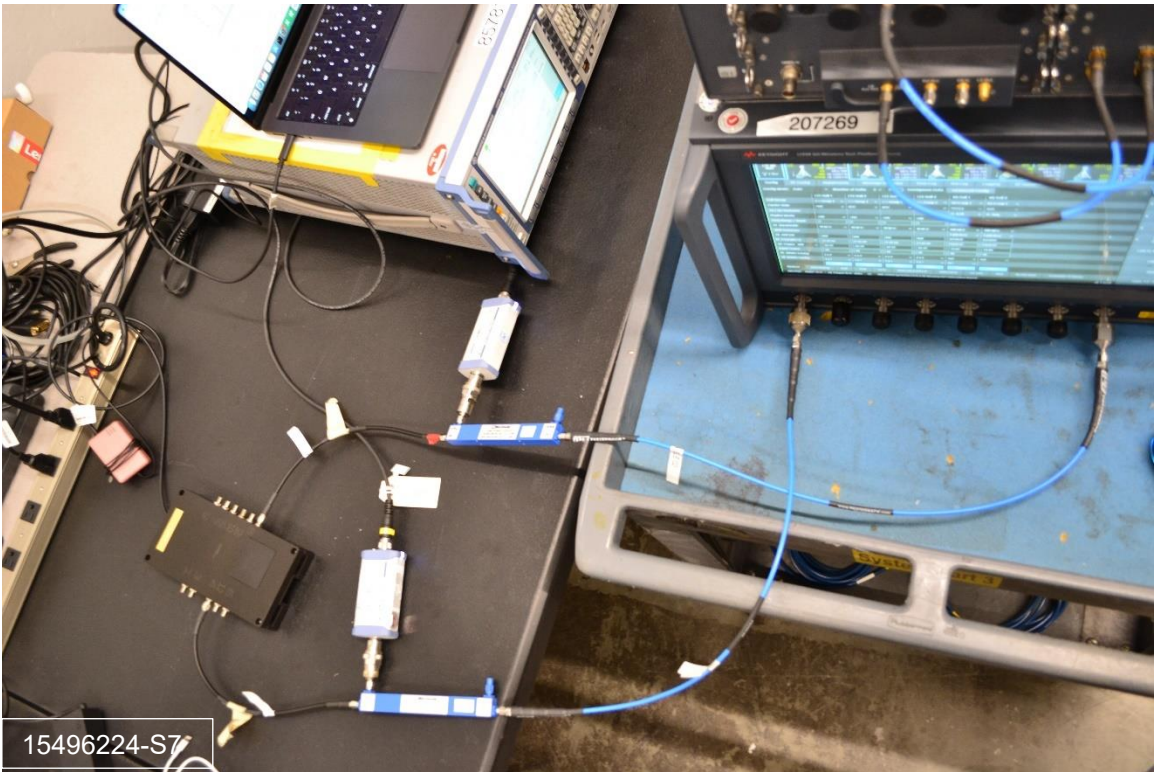
Photograph 7: CMW Conducted Power Test Measurement (Dual Port to Single Port/Antenna Switch)



Photograph 8: UXM Conducted Power Test Measurement (Single Port)

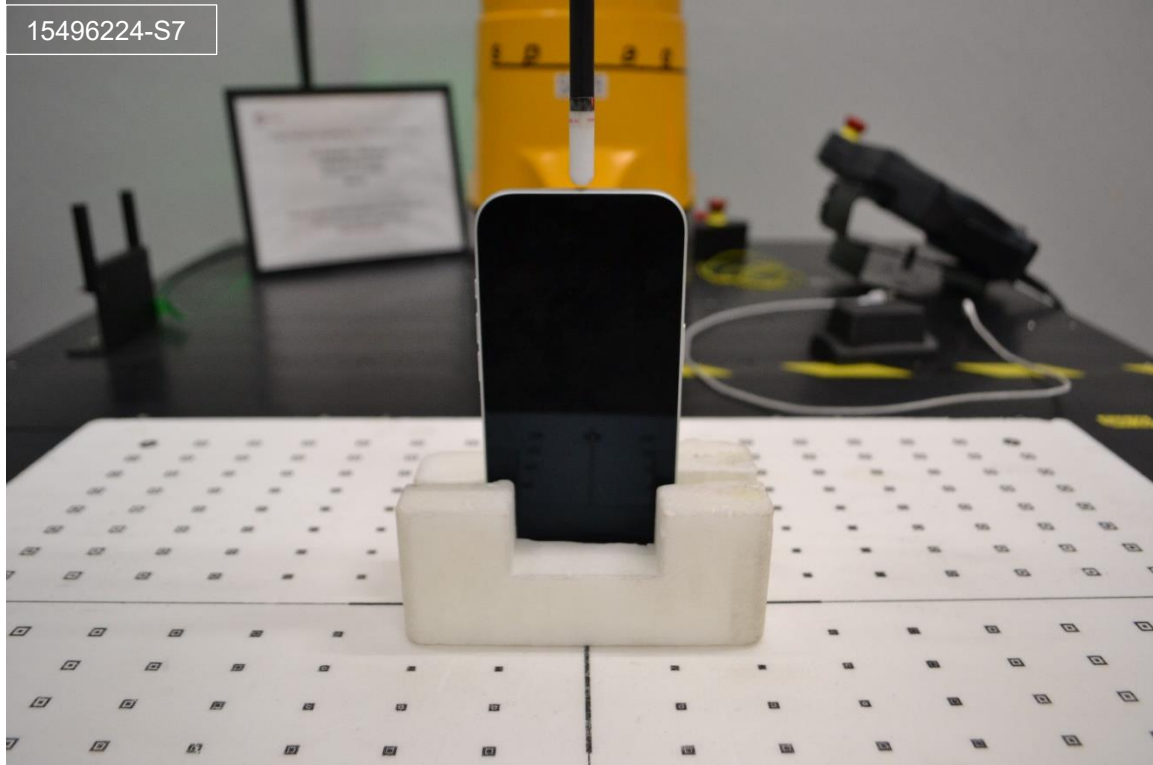


Photograph 9: UXM Conducted Power Test Measurement (Dual Port)



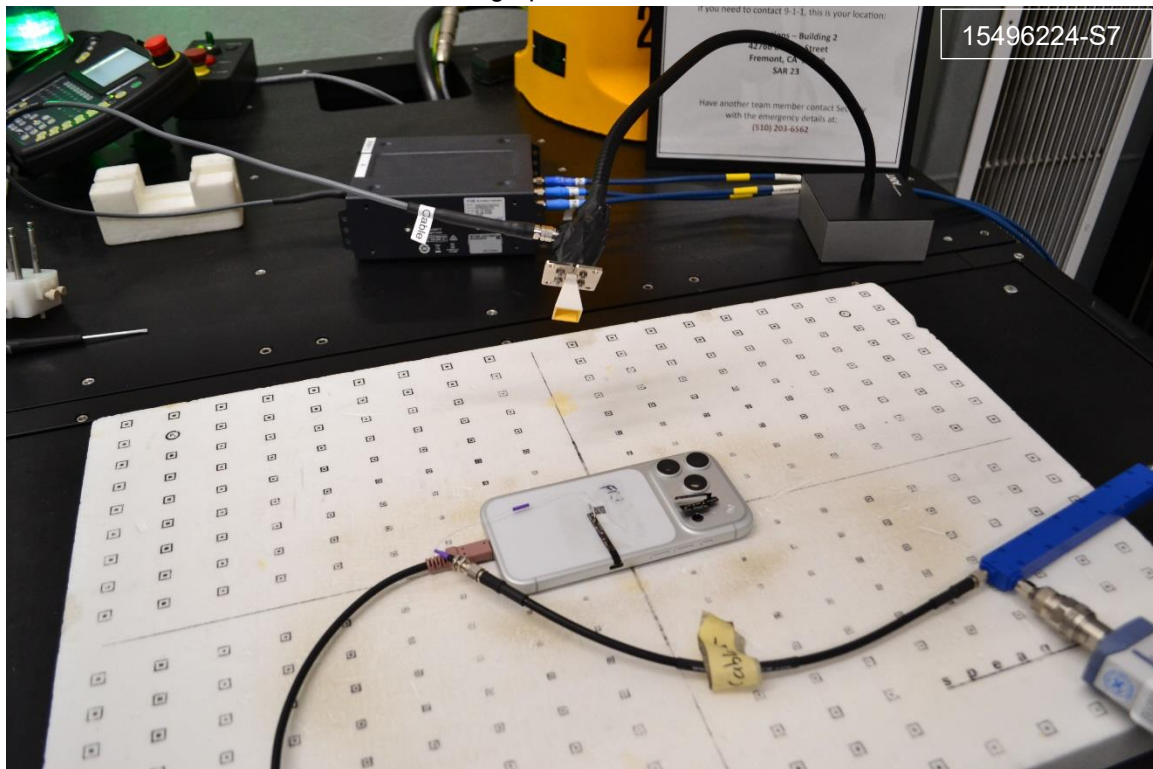
Power Density Setup Photos

Photograph 10: Top, 2 mm

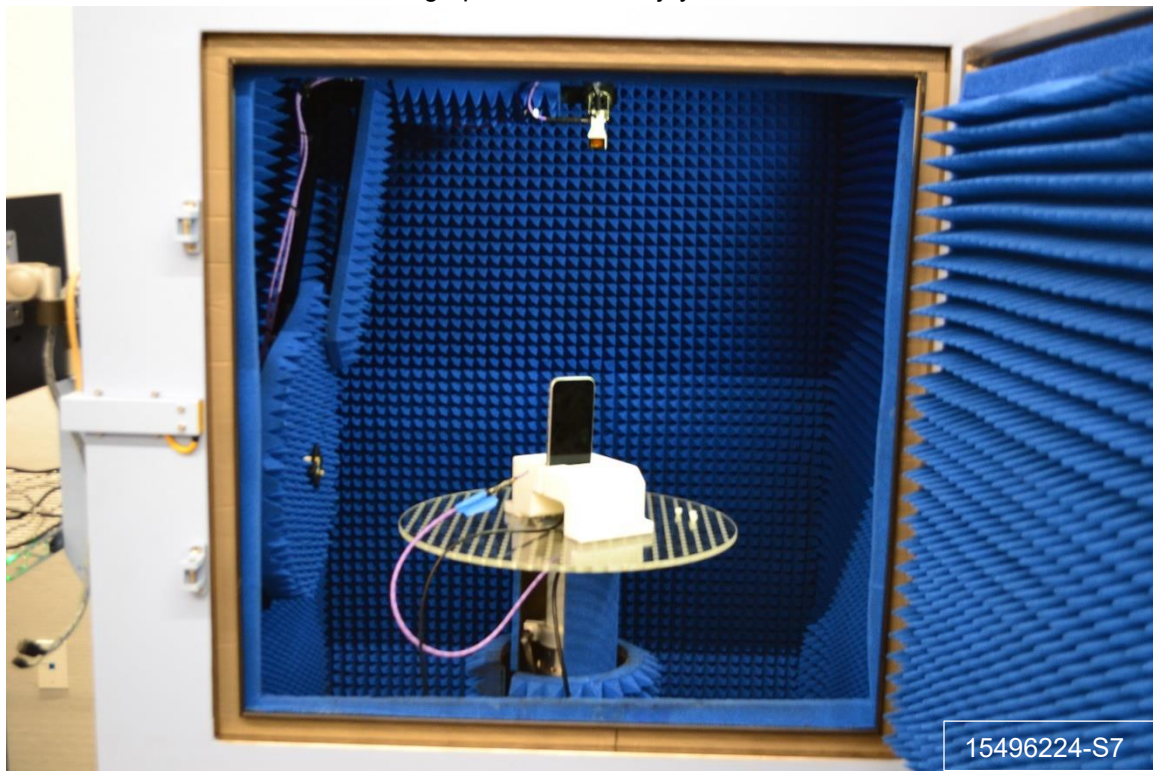


Radiated Power Setup Photos

Photograph 11: With DASY



Photograph 12: Within Bojay Chamber



Antenna Dimensions & Separation Distances

