

# RF System Check Test Report for CD1880:SN 1212

## Hardware Setup

Probe   Calibration Date	EF3DV3 - SN4041   March 04, 2025
DAE   Calibration Date	DAE4 Sn1784   April 09, 2025
Software Version	1.2.6.2199

## Communication Systems

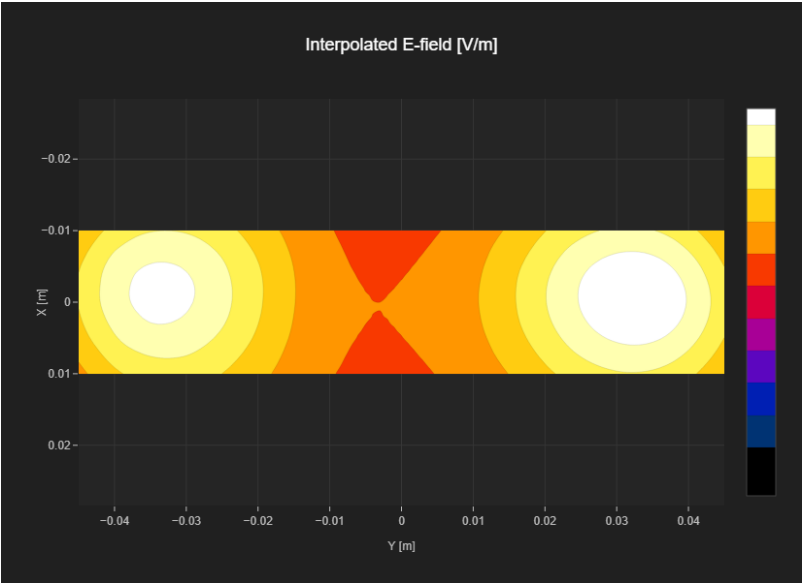
Band Name	CD1880
Channel   Frequency [MHz]	50   1880.0
Communication Systems' Name	CW

## Grid Settings

Extent X [mm]	20.0	Step X [mm]	5.0
Extent Y [mm]	90.0	Step Y [mm]	5.0
Distance [mm]	15.0		

## Results

E <sub>max</sub> [V/m]	84.3
Drift [dB]	0.02



# RF System Check Test Report for CD3500:SN 1006

## Hardware Setup

Probe | Calibration DateEF3DV3 - SN4041 | March 04, 2025

DAE | Calibration DateDAE4 Sn1784 | April 09, 2025

Software Version1.2.6.2199

## Communication Systems

Band NameCD3500V3

Channel | Frequency [MHz]50 | 3500.0

Communication Systems' NameCW

## Grid Settings

Extent X [mm]20.0Step X [mm]5.0

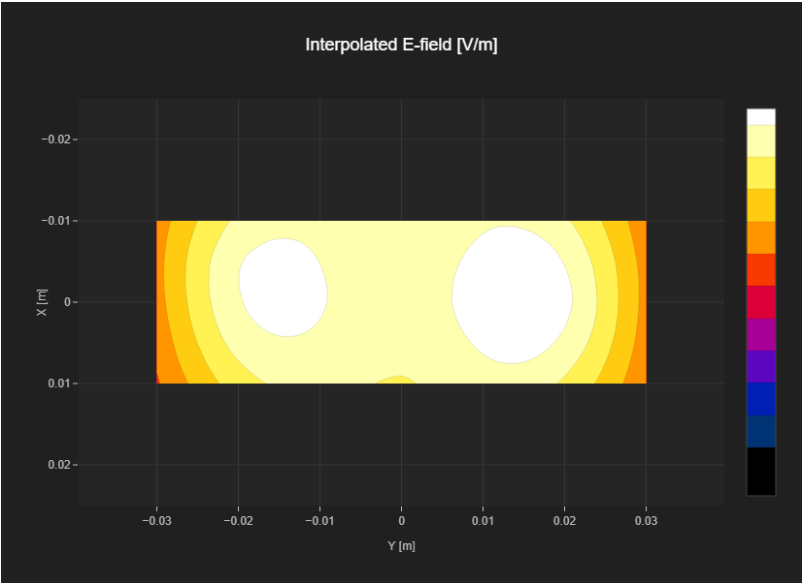
Extent Y [mm]60.0Step Y [mm]5.0

Distance [mm]15.0

## Results

Emax [V/m]83.6

Drift [dB]0.03



# RF System Check Test Report for CD3500:SN 1006

## Hardware Setup

Probe   Calibration Date	EF3DV3 - SN4041   March 04, 2025
DAE   Calibration Date	DAE4 Sn1784   April 09, 2025
Software Version	1.2.6.2199

## Communication Systems

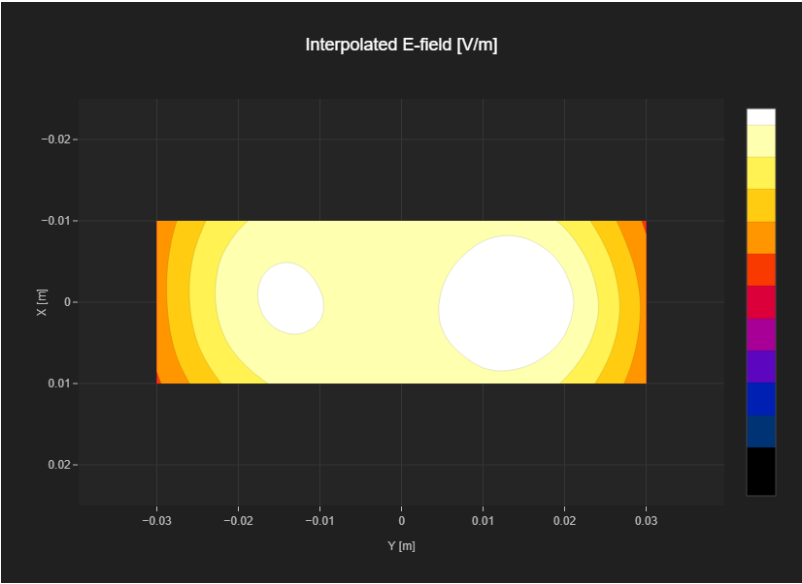
Band Name	CD3500V3
Channel   Frequency [MHz]	0   3700.0
Communication Systems' Name	CW

## Grid Settings

Extent X [mm]	20.0	Step X [mm]	5.0
Extent Y [mm]	60.0	Step Y [mm]	5.0
Distance [mm]	15.0		

## Results

E <sub>max</sub> [V/m]	79.9
Drift [dB]	-0.02



RF System Check Test Report for CD2600:SN 1008

Hardware Setup

Probe | Calibration Date      EF3DV3 - SN4041 | March 04, 2025  
DAE | Calibration Date      DAE4 Sn1784 | April 09, 2025  
Software Version      1.2.6.2199

Communication Systems

Band Name      CD2600V3  
Channel | Frequency [MHz]      50 | 2600.0  
Communication Systems' Name      CW

Grid Settings

Extent X [mm]	20.0	Step X [mm]	5.0
Extent Y [mm]	90.0	Step Y [mm]	5.0
Distance [mm]	15.0		

Results

Emax [V/m]      83.8  
Drift [dB]      0.0

