

Band n53: 5G NR (DFT-s-OFDM, 1 RB, 10 MHz, QPSK, 30 kHz) RBPosition:Low AntennaCfg:SISO, TILT

Exposure Conditions

Band	Band n53	TSL Permittivity	39.1
Frequency [MHz] Channel Number	2489.300 497860	TSL Conductivity [S/m]	1.72
Group UID	5G NR FR1 TDD 10792-AAE	Phantom Section TSL	LeftHead HSL
Conversion Factor	7.1	Test Distance [mm]	0.00

Hardware Setup

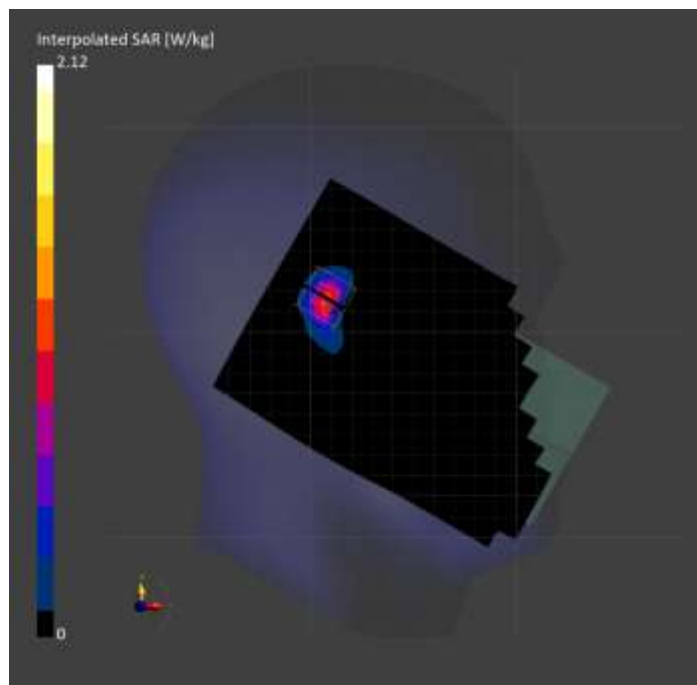
Probe Calibration Date	EX3DV4 - SN3990 2024-02-28	Phantom	Twin-SAM V8.0 (30deg probe tilt)
DAE Calibration Date	DAE4 Sn1433 2024-02-08	TSL Type	HBBL-600-10000
Software Version	16.4.0.5005		

Scan Setup

	Area Scan	Zoom Scan
Grid Extents [mm]	120.0 x 200.0	34.2 x 34.2 x 33.4
Grid Steps [mm]	10.0 x 10.0	3.8 x 3.8 x 1.4
Sensor Surface [mm]	3.0	1.4
Graded Grid	N/A	Yes
M2/M1 [%]		79.6
Dist 3dB Peak [mm]		5.4
Peak SAR [W/kg], SAR Peak Location [mm]	N/A	2.12, 6.4, 317.0, -168.3

Measurement Results

	Area Scan	Zoom Scan
psSAR1g [W/Kg]	0.818	0.877
psSAR10g [W/Kg]	0.315	0.311
Power Drift [dB]	N/A	0.15



Custom Band: L-Band, FRONT

Exposure Conditions

Band	Custom Band	TSL Permittivity	41.2
Frequency [MHz] Channel Number	1617.600 1617600	TSL Conductivity [S/m]	1.22
Group UID	CW 0--	Phantom Section TSL	Flat HSL
Conversion Factor	8.26	Test Distance [mm]	0.00

Hardware Setup

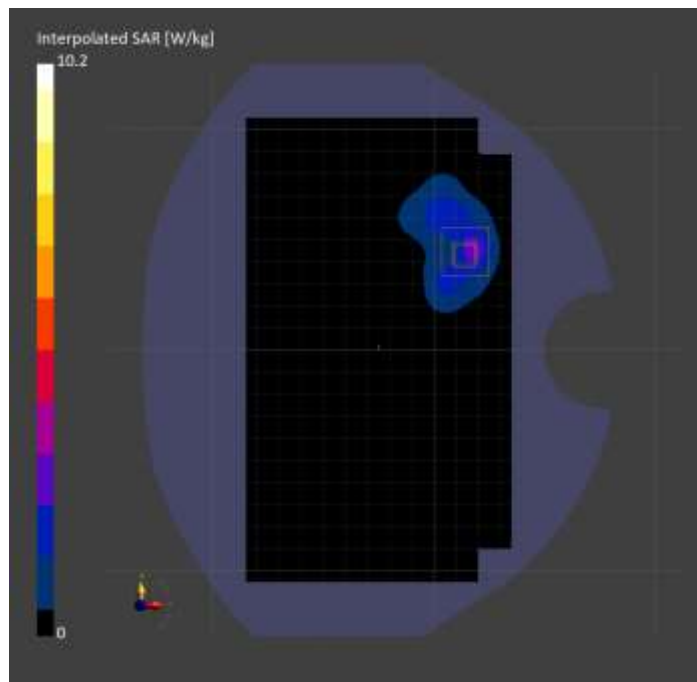
Probe Calibration Date	EX3DV4 - SN7335 2024-01-09	Phantom	Twin-SAM V8.0 (30deg probe tilt)
DAE Calibration Date	DAE4 Sn1799 2024-05-02	TSL Type	HBBL-600-10000
Software Version	16.4.0.5005		

Scan Setup

	Area Scan	Zoom Scan	Secondary Zoom Scan
Grid Extents [mm]	120.0 x 210.0	36.8 x 36.8 x 33.4	36.8 x 36.8 x 33.4
Grid Steps [mm]	15.0 x 15.0	4.6 x 4.6 x 1.4	4.6 x 4.6 x 1.4
Sensor Surface [mm]	3.0	1.4	1.4
Graded Grid	N/A	Yes	Yes
M2/M1 [%]		70.9	66.8
Dist 3dB Peak [mm]		4.6	3.7
Peak SAR [W/kg], SAR Peak Location [mm]	N/A	9.40, 14.2, 44.4, -196.2	10.2, 14.2, 44.4, -196.2

Measurement Results

	Area Scan	Zoom Scan	Secondary Zoom Scan
psSAR1g [W/Kg]	2.24	3.68	3.65
psSAR10g [W/Kg]	1.20	1.60	1.59
Power Drift [dB]	-0.01	-0.02	0.00



Band 7: LTE-FDD (SC-FDMA, 1 RB, 20 MHz, QPSK) RBPosition:Mid AntennaCfg:SISO, EDGE RIGHT

Exposure Conditions

Band	Band 7	TSL Permittivity	38.6
Frequency [MHz] Channel Number	2510.000 20850	TSL Conductivity [S/m]	1.85
Group UID	LTE-FDD 10169-CAF	Phantom Section TSL	Flat HSL
Conversion Factor	6.46	Test Distance [mm]	5.00

Hardware Setup

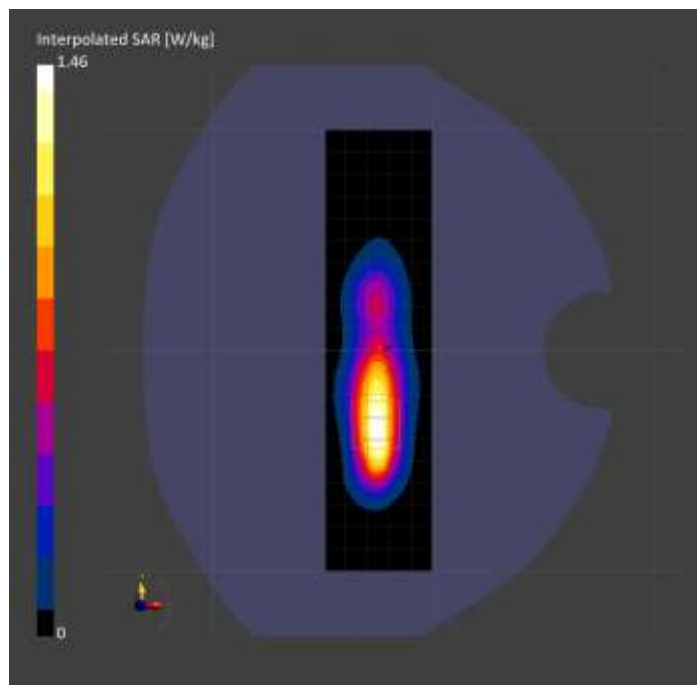
Probe Calibration Date	EX3DV4 - SN3686 2024-01-12	Phantom	Twin-SAM V8.0 (30deg probe tilt)
DAE Calibration Date	DAE4 Sn1357 2024-01-09	TSL Type	HBBL-600-10000
Software Version	16.4.0.5005		

Scan Setup

	Area Scan	Zoom Scan
Grid Extents [mm]	48.0 x 200.0	30.0 x 30.0 x 31.2
Grid Steps [mm]	8.0 x 10.0	5.0 x 5.0 x 1.5
Sensor Surface [mm]	3.0	1.4
Graded Grid	N/A	Yes
M2/M1 [%]		81.3
Dist 3dB Peak [mm]		8.0
Peak SAR [W/kg], SAR Peak Location [mm]	N/A	1.46, -26.2, -36.0, -202.0

Measurement Results

	Area Scan	Zoom Scan
psSAR1g [W/Kg]	0.706	0.717
psSAR10g [W/Kg]	0.333	0.338
Power Drift [dB]	N/A	0.10



**Band 48: LTE-TDD (SC-FDMA, 50% RB, 20 MHz, QPSK, UL Subframe=2,3,4,7,8,9)
RBPosition:Low AntennaCfg:SISO, EDGE RIGHT**

Exposure Conditions

Band	Band 48	TSL Permittivity	39.1
Frequency [MHz] Channel Number	3560.000 55340	TSL Conductivity [S/m]	2.77
Group UID	LTE-TDD 10494-AAG	Phantom Section TSL	Flat HSL
Conversion Factor	6.86	Test Distance [mm]	5.00

Hardware Setup

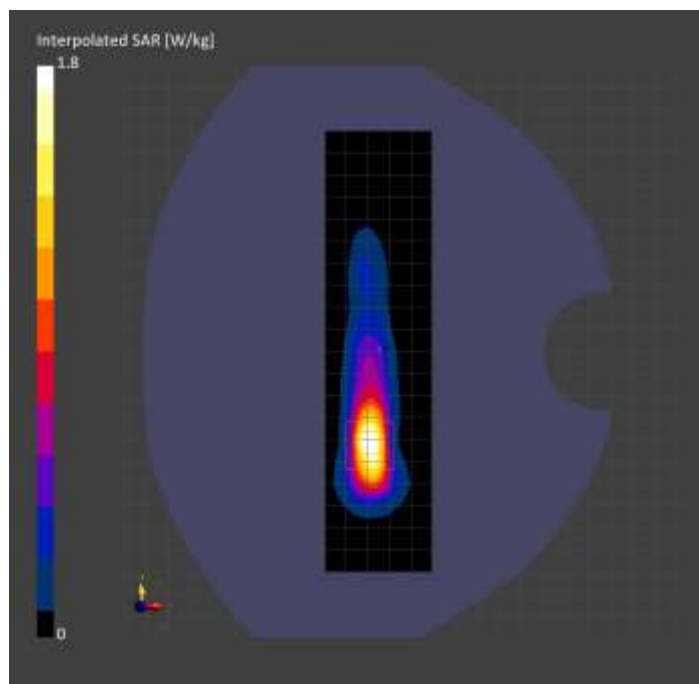
Probe Calibration Date	EX3DV4 - SN3989 (Sensor X Disabled) 2024-01-09	Phantom	Twin-SAM V8.0 (30deg probe tilt)
DAE Calibration Date	DAE4 Sn1674 2024-05-13	TSL Type	HBBL-600-10000
Software Version	16.4.0.5005		

Scan Setup

	Area Scan	Zoom Scan
Grid Extents [mm]	48.0 x 200.0	30.0 x 30.0 x 29.1
Grid Steps [mm]	8.0 x 10.0	5.0 x 5.0 x 1.4
Sensor Surface [mm]	3.0	1.4
Graded Grid	N/A	Yes
M2/M1 [%]		75.6
Dist 3dB Peak [mm]		6.1
Peak SAR [W/kg], SAR Peak Location [mm]	N/A	1.80, -29.3, -41.6, -202.0

Measurement Results

	Area Scan	Zoom Scan
psSAR1g [W/Kg]	0.659	0.686
psSAR10g [W/Kg]	0.251	0.251
Power Drift [dB]	0.07	0.02



WLAN 2.4GHz: IEEE 802.11b WiFi 2.4 GHz (DSSS, 1 Mbps, 99pc duty cycle), CHEEK

Exposure Conditions

Band	WLAN 2.4GHz	TSL Permittivity	39.2
Frequency [MHz] Channel Number	2437.000 6	TSL Conductivity [S/m]	1.69
Group UID	WLAN 10415-AAA	Phantom Section TSL	LeftHead HSL
Conversion Factor	7.1	Test Distance [mm]	0.00

Hardware Setup

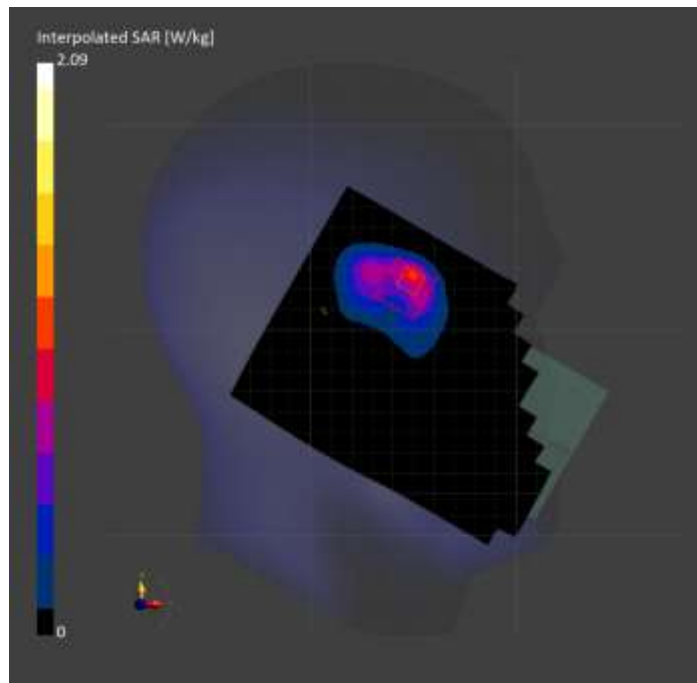
Probe Calibration Date	EX3DV4 - SN3990 2024-02-28	Phantom	Twin-SAM V8.0 (30deg probe tilt)
DAE Calibration Date	DAE4 Sn1433 2024-02-08	TSL Type	HBBL-600-10000
Software Version	16.4.0.5005		

Scan Setup

	Area Scan	Zoom Scan
Grid Extents [mm]	120.0 x 180.0	30.0 x 30.0 x 31.2
Grid Steps [mm]	10.0 x 10.0	5.0 x 5.0 x 1.5
Sensor Surface [mm]	3.0	1.4
Graded Grid	N/A	Yes
M2/M1 [%]		78.0
Dist 3dB Peak [mm]		5.4
Peak SAR [W/kg], SAR Peak Location [mm]	N/A	2.09, 49.1, 324.3, -169.7

Measurement Results

	Area Scan	Zoom Scan
psSAR1g [W/Kg]	0.770	0.877
psSAR10g [W/Kg]	0.371	0.393
Power Drift [dB]	N/A	0.00



U-NII-1, U-NII-2A: IEEE 802.11n (HT Mixed, 40MHz, MCS0, 90pc duty cycle), CHEEK

Exposure Conditions

Band	U-NII-1, U-NII-2A	TSL Permittivity	38.1
Frequency [MHz] Channel Number	5230.000 46	TSL Conductivity [S/m]	4.38
Group UID	WLAN 10599-AAD	Phantom Section TSL	RightHead HSL
Conversion Factor	5.15	Test Distance [mm]	0.00

Hardware Setup

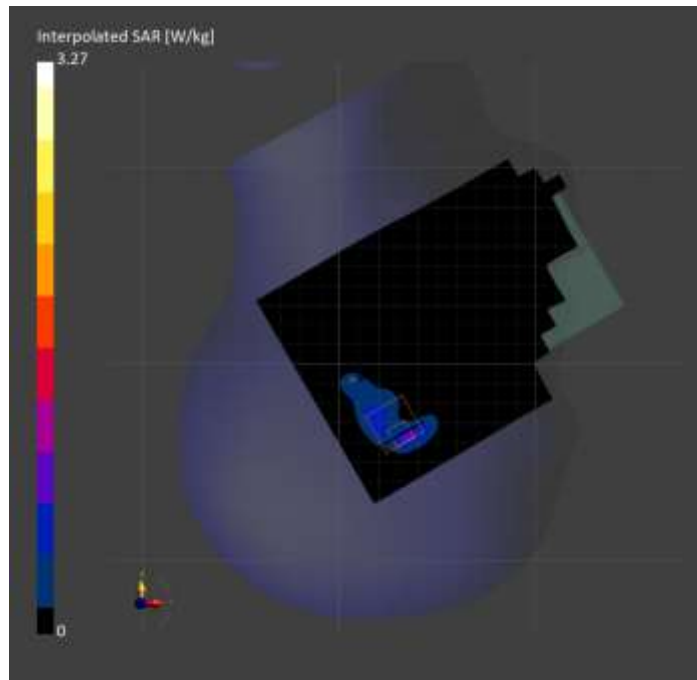
Probe Calibration Date	EX3DV4 - SN3991 2024-11-04	Phantom	Twin-SAM V8.0 (30deg probe tilt)
DAE Calibration Date	DAE4 Sn1544 2024-01-16	TSL Type	HBBL-600-10000
Software Version	16.4.0.5005		

Scan Setup

	Area Scan	Zoom Scan
Grid Extents [mm]	120.0 x 180.0	28.8 x 28.8 x 22.9
Grid Steps [mm]	10.0 x 10.0	3.6 x 3.6 x 1.4
Sensor Surface [mm]	3.0	1.4
Graded Grid	N/A	Yes
M2/M1 [%]		57.9
Dist 3dB Peak [mm]		3.7
Peak SAR [W/kg], SAR Peak Location [mm]	N/A	3.27, 31.3, -336.1, -169.3

Measurement Results

	Area Scan	Zoom Scan
psSAR1g [W/Kg]	0.538	0.670
psSAR10g [W/Kg]	0.191	0.227
Power Drift [dB]	N/A	-0.03



ISM 2.4 GHz Band: IEEE 802.15.1 Bluetooth (GFSK, DH5), CHEEK

Exposure Conditions

Band	ISM 2.4 GHz Band	TSL Permittivity	39.2
Frequency [MHz] Channel Number	2441.000 39	TSL Conductivity [S/m]	1.69
Group UID	Bluetooth 10032-CAA	Phantom Section TSL	LeftHead HSL
Conversion Factor	7.1	Test Distance [mm]	0.00

Hardware Setup

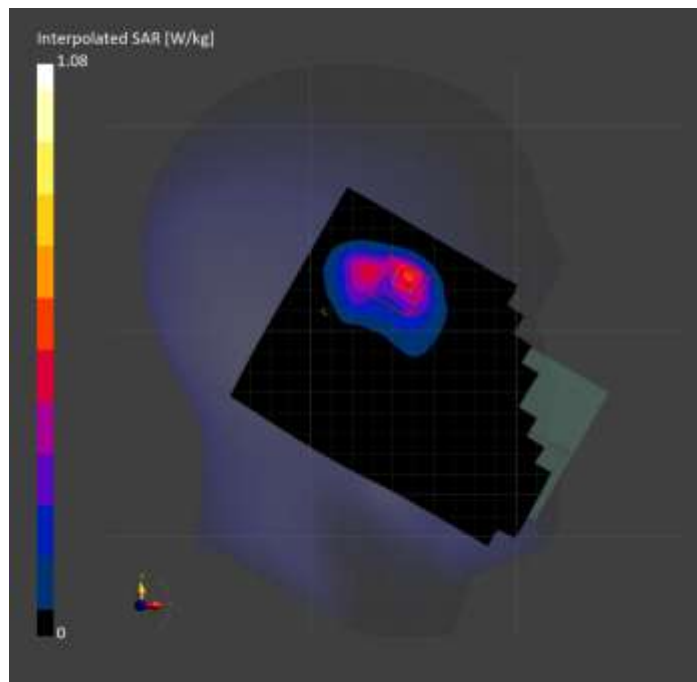
Probe Calibration Date	EX3DV4 - SN3990 2024-02-28	Phantom	Twin-SAM V8.0 (30deg probe tilt)
DAE Calibration Date	DAE4 Sn1433 2024-02-08	TSL Type	HBBL-600-10000
Software Version	16.4.0.5005		

Scan Setup

	Area Scan	Zoom Scan
Grid Extents [mm]	120.0 x 180.0	30.0 x 30.0 x 31.2
Grid Steps [mm]	10.0 x 10.0	5.0 x 5.0 x 1.5
Sensor Surface [mm]	3.0	1.4
Graded Grid	N/A	Yes
M2/M1 [%]		77.9
Dist 3dB Peak [mm]		5.4
Peak SAR [W/kg], SAR Peak Location [mm]	N/A	1.08, 46.7, 326.2, -169.7

Measurement Results

	Area Scan	Zoom Scan
psSAR1g [W/Kg]	0.419	0.467
psSAR10g [W/Kg]	0.205	0.216
Power Drift [dB]	N/A	0.00



Custom Band: NFC, EDGE TOP

Exposure Conditions

Band	Custom Band	TSL Permittivity	54.4
Frequency [MHz] Channel Number	13.600 13600	TSL Conductivity [S/m]	0.687
Group UID	CW 0--	Phantom Section TSL	Flat HSL
Conversion Factor	18.85	Test Distance [mm]	0.00

Hardware Setup

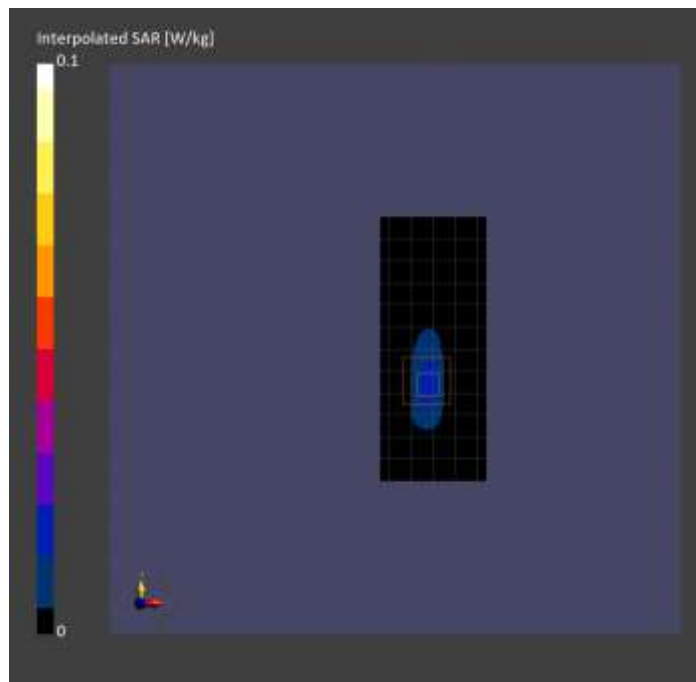
Probe Calibration Date	EX3DV4 - SN3989 (Sensor X Disabled) 2024-01-09	Phantom	ELI V8.0 (20deg probe tilt)
DAE Calibration Date	DAE4 Sn1674 2024-05-13	TSL Type	HBBL4-250V3
Software Version	16.4.0.5005		

Scan Setup

	Area Scan	Zoom Scan
Grid Extents [mm]	48.0 x 120.0	36.8 x 36.8 x 33.4
Grid Steps [mm]	8.0 x 15.0	4.6 x 4.6 x 1.4
Sensor Surface [mm]	3.0	1.4
Graded Grid	N/A	Yes
M2/M1 [%]		61.8
Dist 3dB Peak [mm]		4.7
Peak SAR [W/kg], SAR Peak Location [mm]	N/A	0.074, -3.1, -14.3, -166.2

Measurement Results

	Area Scan	Zoom Scan
psSAR1g [W/Kg]	0.018	0.018
psSAR10g [W/Kg]	0.010	0.006
Power Drift [dB]	0.16	0.03



Band n53: 5G NR (DFT-s-OFDM, 1 RB, 10 MHz, QPSK, 30 kHz) RBPosition:Low AntennaCfg:SISO, TILT

Exposure Conditions

Band	Band n53	TSL Permittivity	39.1
Frequency [MHz] Channel Number	2489.300 497860	TSL Conductivity [S/m]	1.72
Group UID	5G NR FR1 TDD 10898-AAC	Phantom Section TSL	LeftHead HSL
Conversion Factor	7.1	Test Distance [mm]	0.00

Hardware Setup

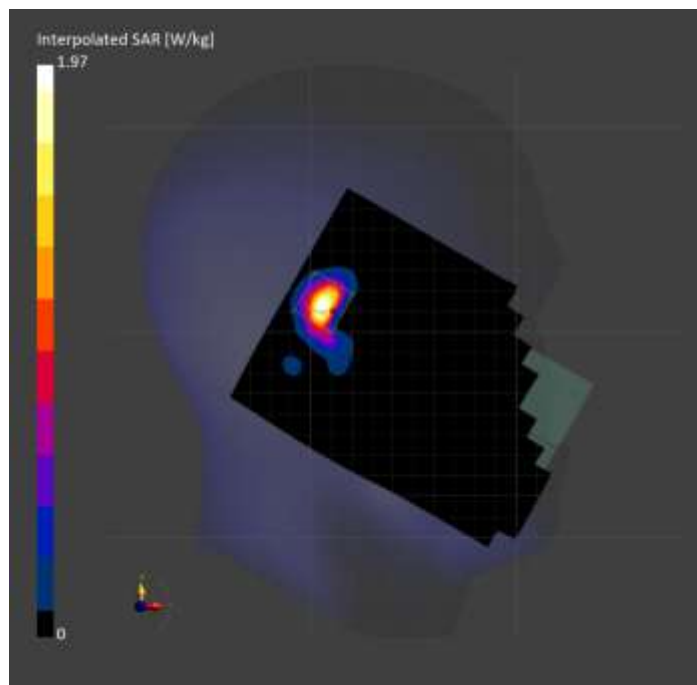
Probe Calibration Date	EX3DV4 - SN3990 2024-02-28	Phantom	Twin-SAM V8.0 (30deg probe tilt)
DAE Calibration Date	DAE4 Sn1433 2024-02-08	TSL Type	HBBL-600-10000
Software Version	16.4.0.5005		

Scan Setup

	Area Scan	Zoom Scan
Grid Extents [mm]	120.0 x 180.0	33.6 x 33.6 x 31.2
Grid Steps [mm]	10.0 x 10.0	4.2 x 4.2 x 1.5
Sensor Surface [mm]	3.0	1.4
Graded Grid	N/A	Yes
M2/M1 [%]		79.6
Dist 3dB Peak [mm]		5.9
Peak SAR [W/kg], SAR Peak Location [mm]	N/A	1.97, 5.2, 314.0, -168.0

Measurement Results

	Area Scan	Zoom Scan
psSAR1g [W/Kg]	0.814	0.850
psSAR10g [W/Kg]	0.303	0.316
Power Drift [dB]	N/A	-0.02



Custom Band: L-Band, FRONT

Exposure Conditions

Band	Custom Band	TSL Permittivity	41.2
Frequency [MHz] Channel Number	1617.600 1617600	TSL Conductivity [S/m]	1.22
Group UID	CW 0--	Phantom Section TSL	Flat HSL
Conversion Factor	8.26	Test Distance [mm]	0.00

Hardware Setup

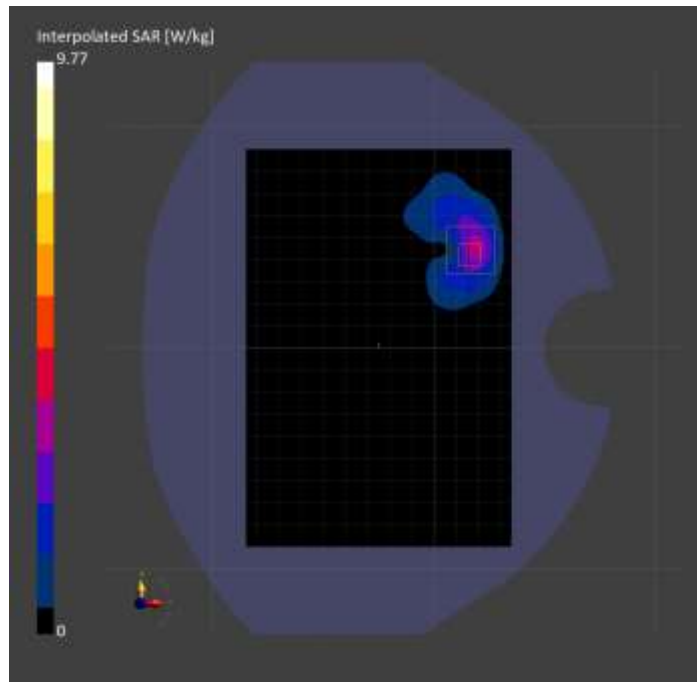
Probe Calibration Date	EX3DV4 - SN7335 2024-01-09	Phantom	Twin-SAM V8.0 (30deg probe tilt)
DAE Calibration Date	DAE4 Sn1799 2024-05-02	TSL Type	HBBL-600-10000
Software Version	16.4.0.5005		

Scan Setup

	Area Scan	Zoom Scan
Grid Extents [mm]	120.0 x 180.0	34.2 x 34.2 x 33.4
Grid Steps [mm]	15.0 x 15.0	3.8 x 3.8 x 1.4
Sensor Surface [mm]	3.0	1.4
Graded Grid	N/A	Yes
M2/M1 [%]		76.7
Dist 3dB Peak [mm]		4.9
Peak SAR [W/kg], SAR Peak Location [mm]	N/A	9.77, 16.5, 44.1, -196.2

Measurement Results

	Area Scan	Zoom Scan
psSAR1g [W/Kg]	2.88	3.63
psSAR10g [W/Kg]	1.46	1.59
Power Drift [dB]	0.02	0.03



Band 7: LTE-FDD (SC-FDMA, 1 RB, 20 MHz, QPSK) RBPosition:Mid AntennaCfg:SISO, EDGE RIGHT

Exposure Conditions

Band	Band 7	TSL Permittivity	38.6
Frequency [MHz] Channel Number	2510.000 20850	TSL Conductivity [S/m]	1.85
Group UID	LTE-FDD 10169-CAF	Phantom Section TSL	Flat HSL
Conversion Factor	6.46	Test Distance [mm]	5.00

Hardware Setup

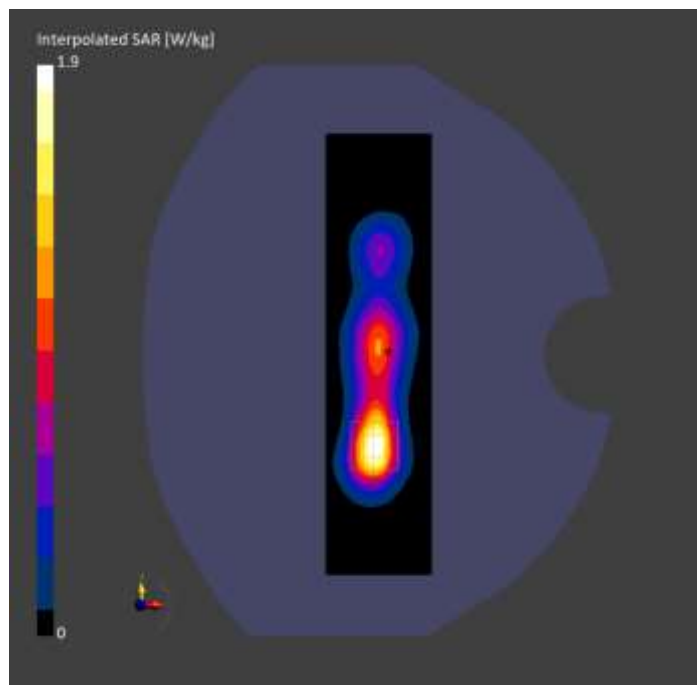
Probe Calibration Date	EX3DV4 - SN3686 2024-01-12	Phantom	Twin-SAM V8.0 (30deg probe tilt)
DAE Calibration Date	DAE4 Sn1357 2024-01-09	TSL Type	HBBL-600-10000
Software Version	16.4.0.5005		

Scan Setup

	Area Scan	Zoom Scan
Grid Extents [mm]	48.0 x 200.0	30.0 x 30.0 x 31.2
Grid Steps [mm]	8.0 x 10.0	5.0 x 5.0 x 1.5
Sensor Surface [mm]	3.0	1.4
Graded Grid	N/A	Yes
M2/M1 [%]		80.6
Dist 3dB Peak [mm]		8.0
Peak SAR [W/kg], SAR Peak Location [mm]	N/A	1.90, -26.9, -41.6, -202.0

Measurement Results

	Area Scan	Zoom Scan
psSAR1g [W/Kg]	0.853	0.904
psSAR10g [W/Kg]	0.377	0.390
Power Drift [dB]	N/A	0.03



Band 48: LTE-TDD (SC-FDMA, 50% RB, 20 MHz, QPSK, UL Subframe=2,3,4,7,8,9) RBPosition:Low AntennaCfg:SISO, EDGE RIGHT

Exposure Conditions

Band	Band 48	TSL Permittivity	39.1
Frequency [MHz] Channel Number	3560.000 55340	TSL Conductivity [S/m]	2.77
Group UID	LTE-TDD 10494-AAG	Phantom Section TSL	Flat HSL
Conversion Factor	6.86	Test Distance [mm]	5.00

Hardware Setup

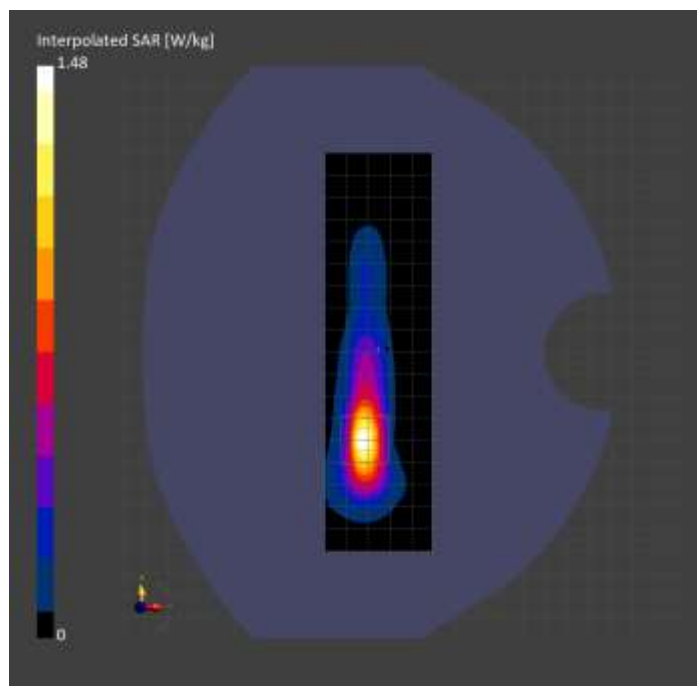
Probe Calibration Date	EX3DV4 - SN3989 (Sensor X Disabled) 2024-01-09	Phantom	Twin-SAM V8.0 (30deg probe tilt)
DAE Calibration Date	DAE4 Sn1674 2024-05-13	TSL Type	HBBL-600-10000
Software Version	16.4.0.5005		

Scan Setup

	Area Scan	Zoom Scan
Grid Extents [mm]	48.0 x 180.0	30.0 x 30.0 x 29.1
Grid Steps [mm]	8.0 x 10.0	5.0 x 5.0 x 1.4
Sensor Surface [mm]	3.0	1.4
Graded Grid	N/A	Yes
M2/M1 [%]		77.8
Dist 3dB Peak [mm]		6.0
Peak SAR [W/kg], SAR Peak Location [mm]	N/A	1.48, -31.2, -39.6, -202.0

Measurement Results

	Area Scan	Zoom Scan
psSAR1g [W/Kg]	0.588	0.578
psSAR10g [W/Kg]	0.218	0.213
Power Drift [dB]	0.01	0.07



WLAN 2.4GHz: IEEE 802.11b WiFi 2.4 GHz (DSSS, 1 Mbps, 99pc duty cycle), CHEEK

Exposure Conditions

Band	WLAN 2.4GHz	TSL Permittivity	39.2
Frequency [MHz] Channel Number	2437.000 6	TSL Conductivity [S/m]	1.69
Group UID	WLAN 10415-AAA	Phantom Section TSL	LeftHead HSL
Conversion Factor	7.1	Test Distance [mm]	0.00

Hardware Setup

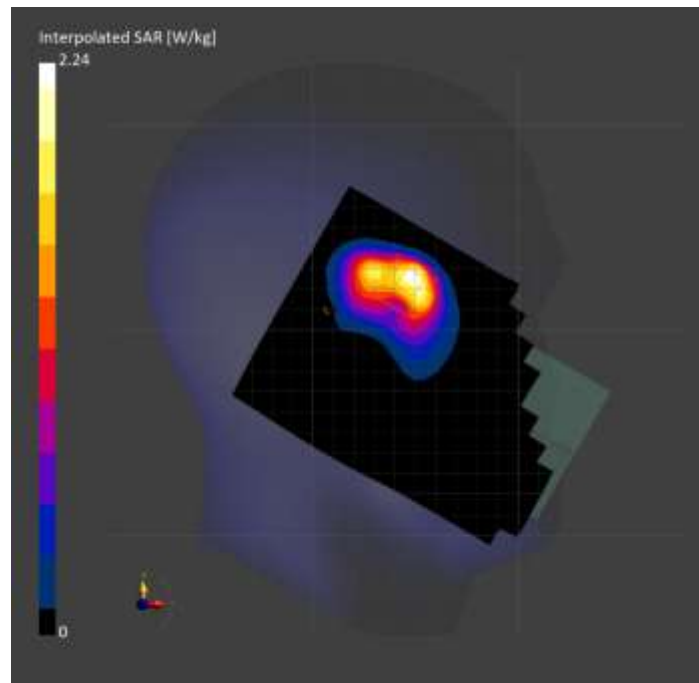
Probe Calibration Date	EX3DV4 - SN3990 2024-02-28	Phantom	Twin-SAM V8.0 (30deg probe tilt)
DAE Calibration Date	DAE4 Sn1433 2024-02-08	TSL Type	HBBL-600-10000
Software Version	16.4.0.5005		

Scan Setup

	Area Scan	Zoom Scan
Grid Extents [mm]	120.0 x 180.0	30.0 x 30.0 x 31.2
Grid Steps [mm]	10.0 x 10.0	5.0 x 5.0 x 1.5
Sensor Surface [mm]	3.0	1.4
Graded Grid	N/A	Yes
M2/M1 [%]		77.4
Dist 3dB Peak [mm]		5.9
Peak SAR [W/kg], SAR Peak Location [mm]	N/A	2.24, 48.0, 324.0, -169.9

Measurement Results

	Area Scan	Zoom Scan
psSAR1g [W/Kg]	0.821	0.937
psSAR10g [W/Kg]	0.404	0.424
Power Drift [dB]	N/A	-0.02



U-NII-1, U-NII-2A: IEEE 802.11n (HT Mixed, 40MHz, MCS0, 90pc duty cycle), CHEEK

Exposure Conditions

Band	U-NII-1, U-NII-2A	TSL Permittivity	38.1
Frequency [MHz] Channel Number	5230.000 46	TSL Conductivity [S/m]	4.38
Group UID	WLAN 10599-AAD	Phantom Section TSL	RightHead HSL
Conversion Factor	5.15	Test Distance [mm]	0.00

Hardware Setup

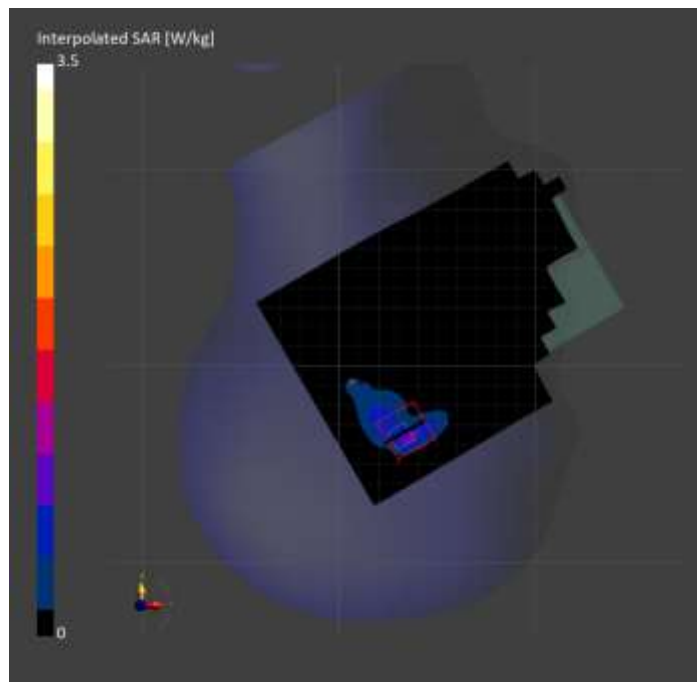
Probe Calibration Date	EX3DV4 - SN3991 2024-11-04	Phantom	Twin-SAM V8.0 (30deg probe tilt)
DAE Calibration Date	DAE4 Sn1544 2024-01-16	TSL Type	HBBL-600-10000
Software Version	16.4.0.5005		

Scan Setup

	Area Scan	Zoom Scan
Grid Extents [mm]	120.0 x 180.0	23.8 x 23.8 x 22.9
Grid Steps [mm]	10.0 x 10.0	3.4 x 3.4 x 1.4
Sensor Surface [mm]	3.0	1.4
Graded Grid	N/A	Yes
M2/M1 [%]		55.6
Dist 3dB Peak [mm]		4.4
Peak SAR [W/kg], SAR Peak Location [mm]	N/A	3.50, 31.3, -336.1, -169.3

Measurement Results

	Area Scan	Zoom Scan
psSAR1g [W/Kg]	0.652	0.751
psSAR10g [W/Kg]	0.238	0.250
Power Drift [dB]	N/A	0.00



ISM 2.4 GHz Band: IEEE 802.15.1 Bluetooth (GFSK, DH5), CHEEK

Exposure Conditions

Band	ISM 2.4 GHz Band	TSL Permittivity	39.2
Frequency [MHz] Channel Number	2441.000 39	TSL Conductivity [S/m]	1.69
Group UID	Bluetooth 10032-CAA	Phantom Section TSL	LeftHead HSL
Conversion Factor	7.1	Test Distance [mm]	0.00

Hardware Setup

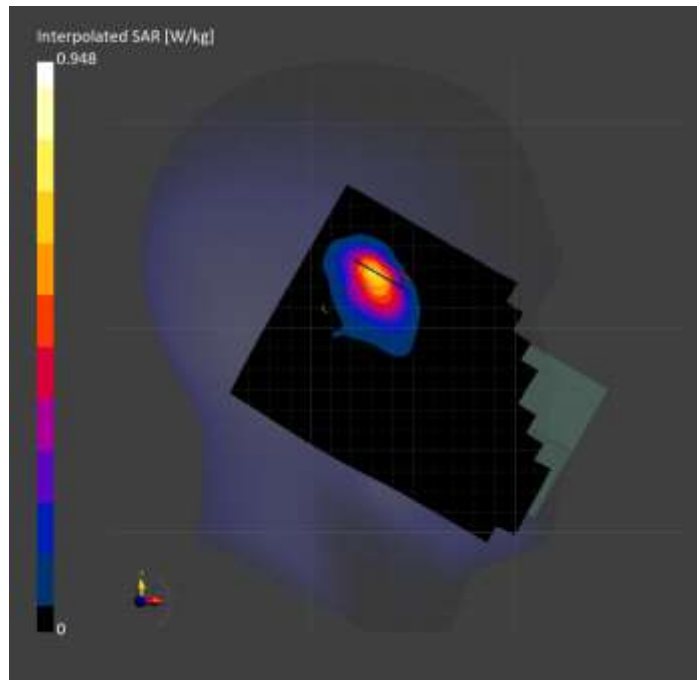
Probe Calibration Date	EX3DV4 - SN3990 2024-02-28	Phantom	Twin-SAM V8.0 (30deg probe tilt)
DAE Calibration Date	DAE4 Sn1433 2024-02-08	TSL Type	HBBL-600-10000
Software Version	16.4.0.5005		

Scan Setup

	Area Scan	Zoom Scan
Grid Extents [mm]	120.0 x 180.0	30.0 x 30.0 x 31.2
Grid Steps [mm]	10.0 x 10.0	5.0 x 5.0 x 1.5
Sensor Surface [mm]	3.0	1.4
Graded Grid	N/A	Yes
M2/M1 [%]		89.4
Dist 3dB Peak [mm]		7.6
Peak SAR [W/kg], SAR Peak Location [mm]	N/A	0.948, 31.3, 324.5, -170.3

Measurement Results

	Area Scan	Zoom Scan
psSAR1g [W/Kg]	0.535	0.568
psSAR10g [W/Kg]	0.251	0.266
Power Drift [dB]	N/A	-0.00



Custom Band: NFC, EDGE TOP

Exposure Conditions

Band	Custom Band	TSL Permittivity	54.4
Frequency [MHz] Channel Number	13.600 13600	TSL Conductivity [S/m]	0.687
Group UID	CW 0--	Phantom Section TSL	Flat HSL
Conversion Factor	18.85	Test Distance [mm]	0.00

Hardware Setup

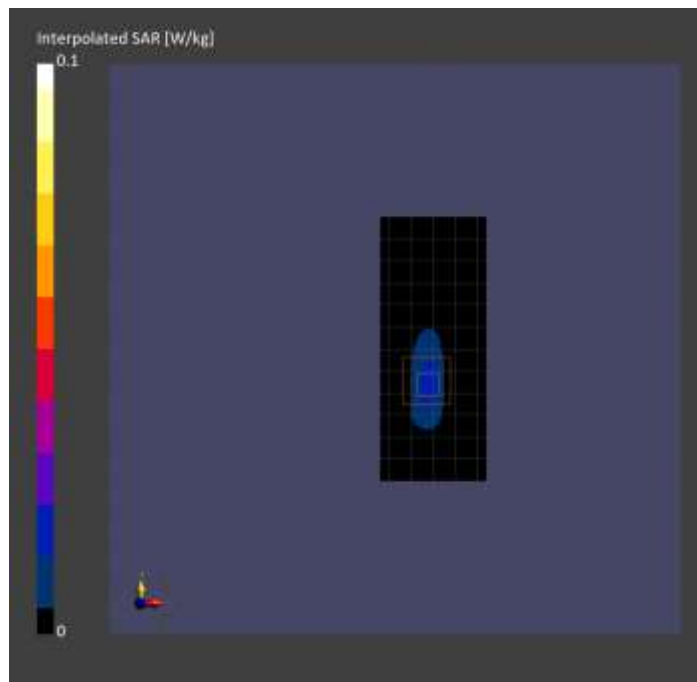
Probe Calibration Date	EX3DV4 - SN3989 (Sensor X Disabled) 2024-01-09	Phantom	ELI V8.0 (20deg probe tilt)
DAE Calibration Date	DAE4 Sn1674 2024-05-13	TSL Type	HBBL4-250V3
Software Version	16.4.0.5005		

Scan Setup

	Area Scan	Zoom Scan
Grid Extents [mm]	48.0 x 120.0	36.8 x 36.8 x 33.4
Grid Steps [mm]	8.0 x 15.0	4.6 x 4.6 x 1.4
Sensor Surface [mm]	3.0	1.4
Graded Grid	N/A	Yes
M2/M1 [%]		61.8
Dist 3dB Peak [mm]		4.7
Peak SAR [W/kg], SAR Peak Location [mm]	N/A	0.074, -3.1, -14.3, -166.2

Measurement Results

	Area Scan	Zoom Scan
psSAR1g [W/Kg]	0.018	0.017
psSAR10g [W/Kg]	0.010	0.006
Power Drift [dB]	0.16	0.03



Band 7: LTE-FDD (SC-FDMA, 1 RB, 20 MHz, QPSK) RBPosition:Mid AntennaCfg:SISO, EDGE RIGHT

Exposure Conditions

Band	Band 7	TSL Permittivity	38.6
Frequency [MHz] Channel Number	2510.000 20850	TSL Conductivity [S/m]	1.85
Group UID	LTE-FDD 10169-CAF	Phantom Section TSL	Flat HSL
Conversion Factor	6.46	Test Distance [mm]	5.00

Hardware Setup

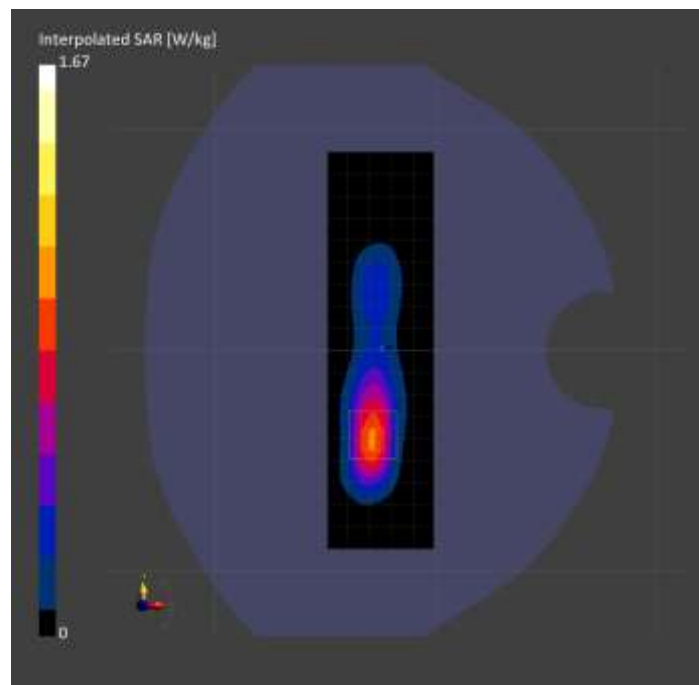
Probe Calibration Date	EX3DV4 - SN3686 2024-01-12	Phantom	Twin-SAM V8.0 (30deg probe tilt)
DAE Calibration Date	DAE4 Sn1357 2024-01-09	TSL Type	HBBL-600-10000
Software Version	16.4.0.5005		

Scan Setup

	Area Scan	Zoom Scan
Grid Extents [mm]	48.0 x 180.0	30.0 x 30.0 x 31.2
Grid Steps [mm]	8.0 x 10.0	5.0 x 5.0 x 1.5
Sensor Surface [mm]	3.0	1.4
Graded Grid	N/A	Yes
M2/M1 [%]		80.2
Dist 3dB Peak [mm]		7.3
Peak SAR [W/kg], SAR Peak Location [mm]	N/A	1.67, -28.6, -40.6, -202.0

Measurement Results

	Area Scan	Zoom Scan
psSAR1g [W/Kg]	0.768	0.789
psSAR10g [W/Kg]	0.350	0.351
Power Drift [dB]	N/A	-0.08



**Band 48: LTE-TDD (SC-FDMA, 50% RB, 20 MHz, QPSK, UL Subframe=2,3,4,7,8,9)
RBPosition:Low AntennaCfg:SISO, EDGE RIGHT**

Exposure Conditions

Band	Band 48	TSL Permittivity	39.1
Frequency [MHz] Channel Number	3560.000 55340	TSL Conductivity [S/m]	2.77
Group UID	LTE-TDD 10494-AAG	Phantom Section TSL	Flat HSL
Conversion Factor	6.86	Test Distance [mm]	5.00

Hardware Setup

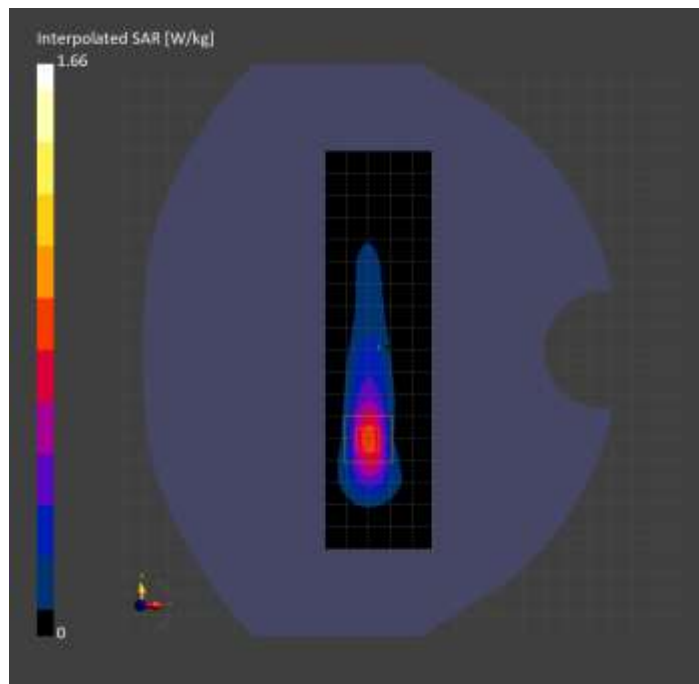
Probe Calibration Date	EX3DV4 - SN3989 (Sensor X Disabled) 2024-01-09	Phantom	Twin-SAM V8.0 (30deg probe tilt)
DAE Calibration Date	DAE4 Sn1674 2024-05-13	TSL Type	HBBL-600-10000
Software Version	16.4.0.5005		

Scan Setup

	Area Scan	Zoom Scan
Grid Extents [mm]	48.0 x 180.0	30.0 x 30.0 x 29.1
Grid Steps [mm]	8.0 x 10.0	5.0 x 5.0 x 1.4
Sensor Surface [mm]	3.0	1.4
Graded Grid	N/A	Yes
M2/M1 [%]		78.3
Dist 3dB Peak [mm]		7.1
Peak SAR [W/kg], SAR Peak Location [mm]	N/A	1.66, -29.8, -40.5, -202.0

Measurement Results

	Area Scan	Zoom Scan
psSAR1g [W/Kg]	0.658	0.663
psSAR10g [W/Kg]	0.254	0.248
Power Drift [dB]	-0.05	-0.06



WLAN 2.4GHz: IEEE 802.11b WiFi 2.4 GHz (DSSS, 1 Mbps, 99pc duty cycle), CHEEK

Exposure Conditions

Band	WLAN 2.4GHz	TSL Permittivity	39.2
Frequency [MHz] Channel Number	2437.000 6	TSL Conductivity [S/m]	1.69
Group UID	WLAN 10415-AAA	Phantom Section TSL	LeftHead HSL
Conversion Factor	7.1	Test Distance [mm]	0.00

Hardware Setup

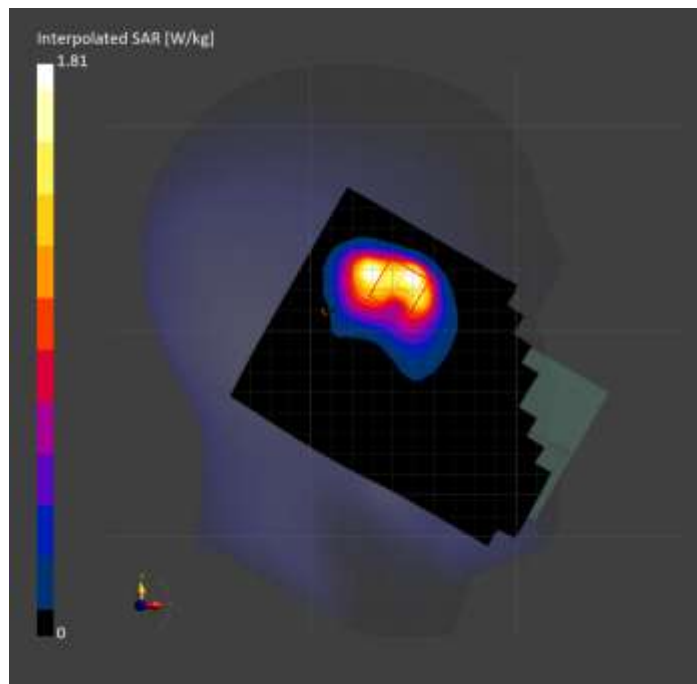
Probe Calibration Date	EX3DV4 - SN3990 2024-02-28	Phantom	Twin-SAM V8.0 (30deg probe tilt)
DAE Calibration Date	DAE4 Sn1433 2024-02-08	TSL Type	HBBL-600-10000
Software Version	16.4.0.5005		

Scan Setup

	Area Scan	Zoom Scan
Grid Extents [mm]	120.0 x 180.0	30.0 x 30.0 x 31.2
Grid Steps [mm]	10.0 x 10.0	5.0 x 5.0 x 1.5
Sensor Surface [mm]	3.0	1.4
Graded Grid	N/A	Yes
M2/M1 [%]		77.5
Dist 3dB Peak [mm]		5.9
Peak SAR [W/kg], SAR Peak Location [mm]	N/A	1.81, 49.1, 324.3, -169.7

Measurement Results

	Area Scan	Zoom Scan
psSAR1g [W/Kg]	0.660	0.758
psSAR10g [W/Kg]	0.336	0.353
Power Drift [dB]	N/A	0.00



U-NII-1, U-NII-2A: IEEE 802.11n (HT Mixed, 40MHz, MCS0, 90pc duty cycle), CHEEK

Exposure Conditions

Band	U-NII-1, U-NII-2A	TSL Permittivity	38.1
Frequency [MHz] Channel Number	5230.000 46	TSL Conductivity [S/m]	4.38
Group UID	WLAN 10599-AAD	Phantom Section TSL	RightHead HSL
Conversion Factor	5.15	Test Distance [mm]	0.00

Hardware Setup

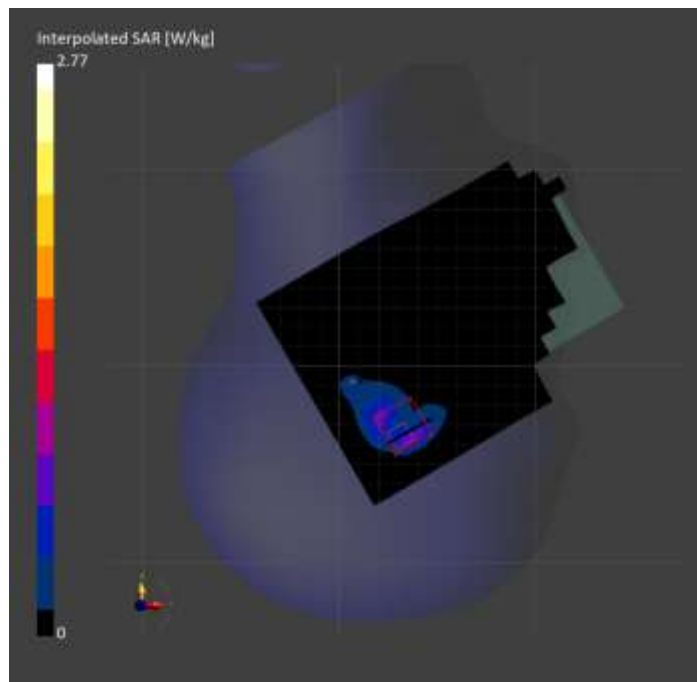
Probe Calibration Date	EX3DV4 - SN3991 2024-11-04	Phantom	Twin-SAM V8.0 (30deg probe tilt)
DAE Calibration Date	DAE4 Sn1544 2024-01-16	TSL Type	HBBL-600-10000
Software Version	16.4.0.5005		

Scan Setup

	Area Scan	Zoom Scan
Grid Extents [mm]	120.0 x 180.0	26.6 x 26.6 x 22.9
Grid Steps [mm]	10.0 x 10.0	3.8 x 3.8 x 1.4
Sensor Surface [mm]	3.0	1.4
Graded Grid	N/A	Yes
M2/M1 [%]		61.1
Dist 3dB Peak [mm]		4.5
Peak SAR [W/kg], SAR Peak Location [mm]	N/A	2.77, 31.3, -336.1, -169.3

Measurement Results

	Area Scan	Zoom Scan
psSAR1g [W/Kg]	0.527	0.629
psSAR10g [W/Kg]	0.211	0.230
Power Drift [dB]	N/A	0.04



ISM 2.4 GHz Band: IEEE 802.15.1 Bluetooth (GFSK, DH5), CHEEK

Exposure Conditions

Band	ISM 2.4 GHz Band	TSL Permittivity	39.2
Frequency [MHz] Channel Number	2441.000 39	TSL Conductivity [S/m]	1.69
Group UID	Bluetooth 10032-CAA	Phantom Section TSL	LeftHead HSL
Conversion Factor	7.1	Test Distance [mm]	0.00

Hardware Setup

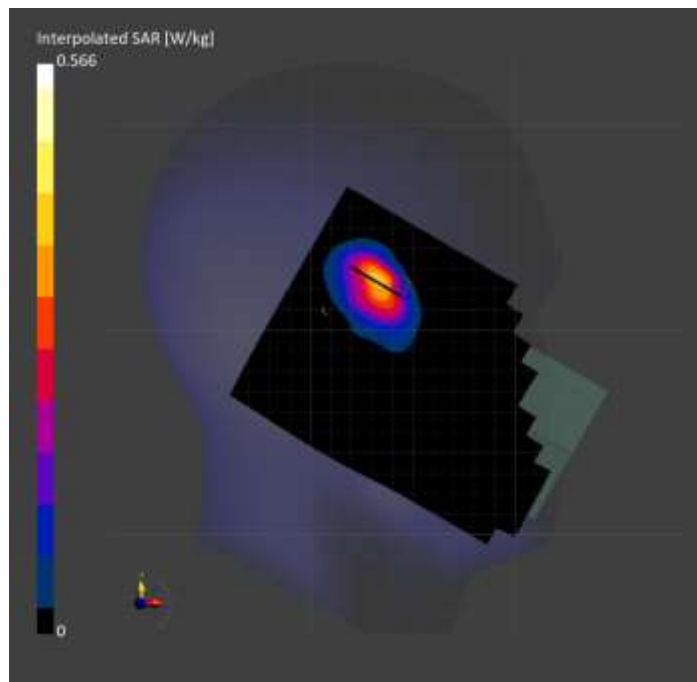
Probe Calibration Date	EX3DV4 - SN3990 2024-02-28	Phantom	Twin-SAM V8.0 (30deg probe tilt)
DAE Calibration Date	DAE4 Sn1433 2024-02-08	TSL Type	HBBL-600-10000
Software Version	16.4.0.5005		

Scan Setup

	Area Scan	Zoom Scan
Grid Extents [mm]	120.0 x 180.0	30.0 x 30.0 x 31.2
Grid Steps [mm]	10.0 x 10.0	5.0 x 5.0 x 1.5
Sensor Surface [mm]	3.0	1.4
Graded Grid	N/A	Yes
M2/M1 [%]		89.7
Dist 3dB Peak [mm]		7.2
Peak SAR [W/kg], SAR Peak Location [mm]	N/A	0.566, 32.4, 323.1, -170.4

Measurement Results

	Area Scan	Zoom Scan
psSAR1g [W/Kg]	0.305	0.338
psSAR10g [W/Kg]	0.147	0.160
Power Drift [dB]	N/A	0.02



Custom Band: NFC, EDGE TOP

Exposure Conditions

Band	Custom Band	TSL Permittivity	54.4
Frequency [MHz] Channel Number	13.600 13600	TSL Conductivity [S/m]	0.687
Group UID	CW 0--	Phantom Section TSL	Flat HSL
Conversion Factor	18.85	Test Distance [mm]	0.00

Hardware Setup

Probe Calibration Date	EX3DV4 - SN3989 (Sensor X Disabled) 2024-01-09	Phantom	ELI V8.0 (20deg probe tilt)
DAE Calibration Date	DAE4 Sn1674 2024-05-13	TSL Type	HBBL4-250V3
Software Version	16.4.0.5005		

Scan Setup

	Area Scan	Zoom Scan
Grid Extents [mm]	48.0 x 120.0	36.8 x 36.8 x 33.4
Grid Steps [mm]	8.0 x 15.0	4.6 x 4.6 x 1.4
Sensor Surface [mm]	3.0	1.4
Graded Grid	N/A	Yes
M2/M1 [%]		61.8
Dist 3dB Peak [mm]		4.7
Peak SAR [W/kg], SAR Peak Location [mm]	N/A	0.074, -3.1, -14.3, -166.2

Measurement Results

	Area Scan	Zoom Scan
psSAR1g [W/Kg]	0.018	0.020
psSAR10g [W/Kg]	0.010	0.006
Power Drift [dB]	0.16	0.03

