

PCS 1900 RF Interference Potential Test Report

Hardware Setup

Probe Calibration Date	EF3DV3 - SN4028 September 04, 2023
DAE Calibration Date	DAE4 Sn1546 March 11, 2024
Software Version	1.2.0.1713

Communication Systems

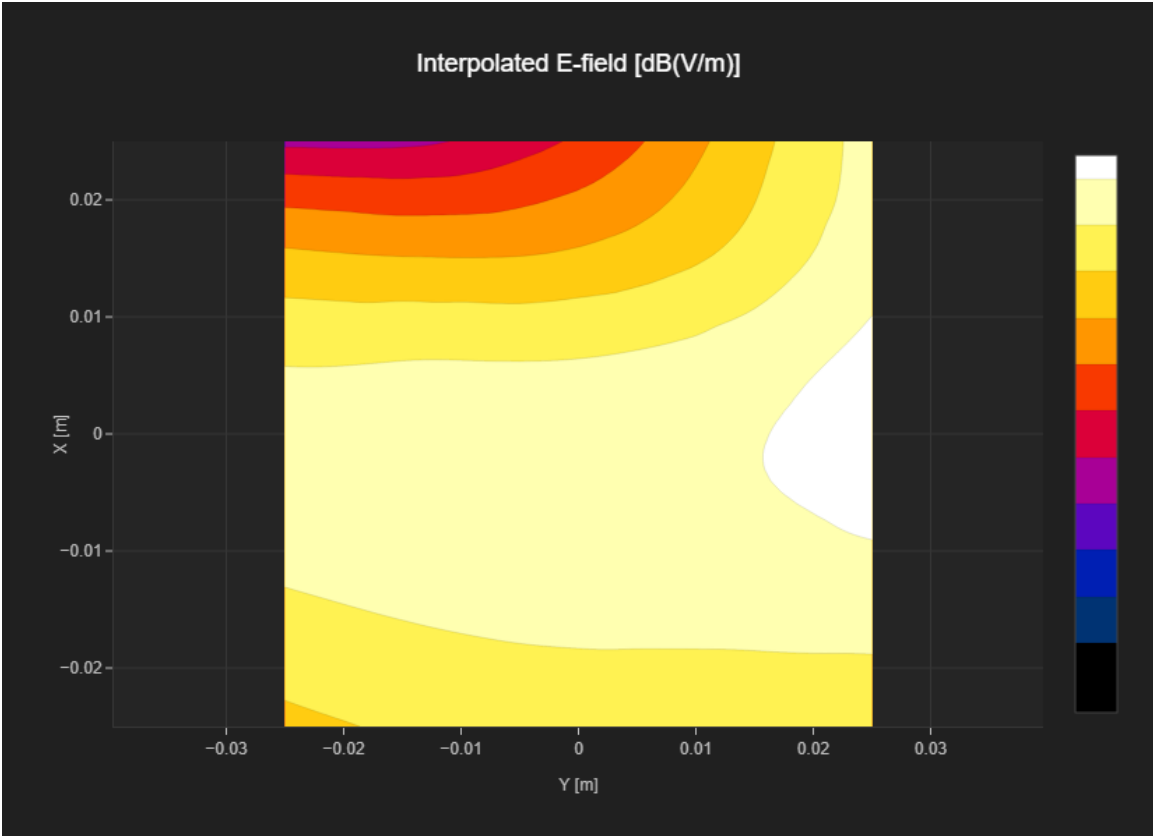
MIF	3.8
Channel Frequency [MHz]	512 1850.2
Communication Systems' Name	GPRS-FDD (TDMA, GMSK, TN 0)

Grid Settings

Extent X [mm]	50.0	Step X [mm]	10.0
Extent Y [mm]	50.0	Step Y [mm]	10.0
Distance [mm]	15.0		

Results

Emax [dBV/m]	22.66	Eavg 50x50 Max [dBV/m]	21.1
Drift [dB]	0.11	RFail [dBV/m]	24.9



PCS 1900 RF Interference Potential Test Report

Hardware Setup

Probe Calibration Date	EF3DV3 - SN4028 September 04, 2023
DAE Calibration Date	DAE4 Sn1546 March 11, 2024
Software Version	1.2.0.1713

Communication Systems

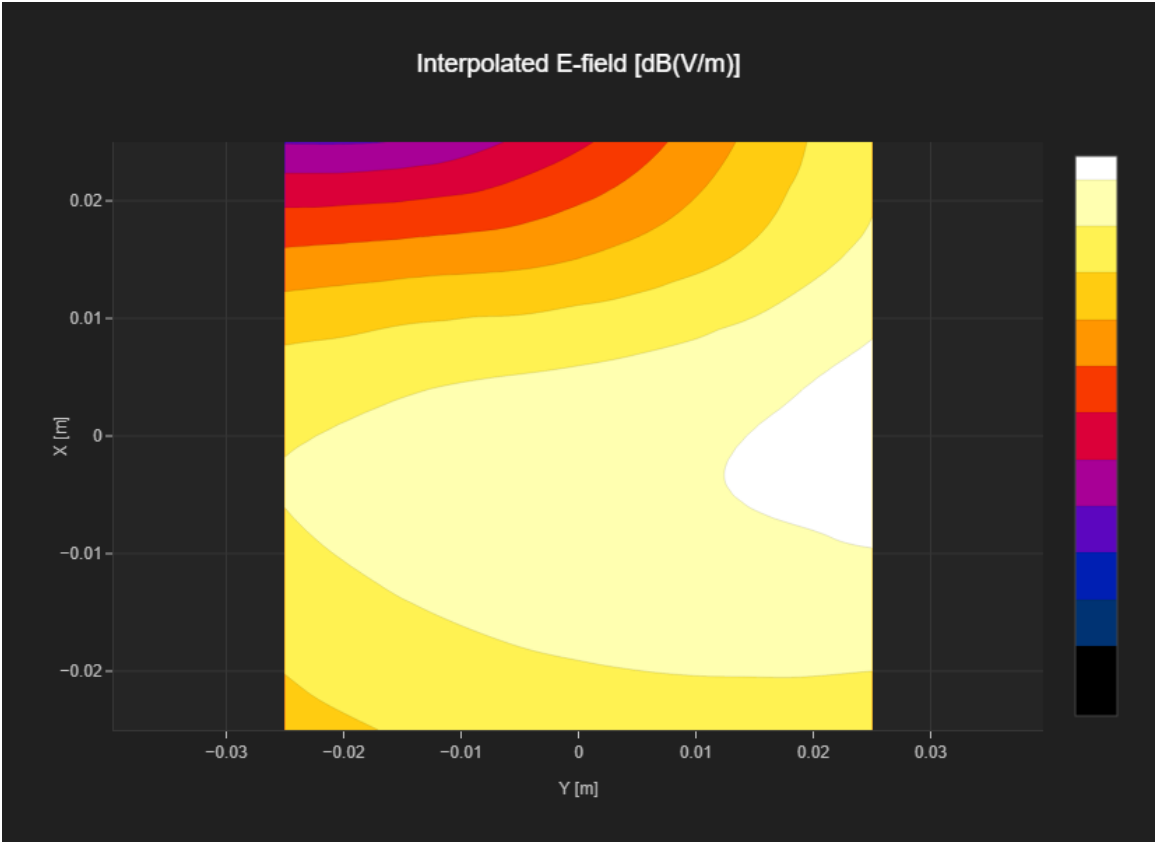
MIF	3.8
Channel Frequency [MHz]	661 1880.0
Communication Systems' Name	GPRS-FDD (TDMA, GMSK, TN 0)

Grid Settings

Extent X [mm]	50.0	Step X [mm]	10.0
Extent Y [mm]	50.0	Step Y [mm]	10.0
Distance [mm]	15.0		

Results

Emax [dBV/m]	24.27	Eavg 50x50 Max [dBV/m]	21.28
Drift [dB]	0.03	RFail [dBV/m]	25.08



PCS 1900 RF Interference Potential Test Report

Hardware Setup

Probe Calibration Date	EF3DV3 - SN4028 September 04, 2023
DAE Calibration Date	DAE4 Sn1546 March 11, 2024
Software Version	1.2.0.1713

Communication Systems

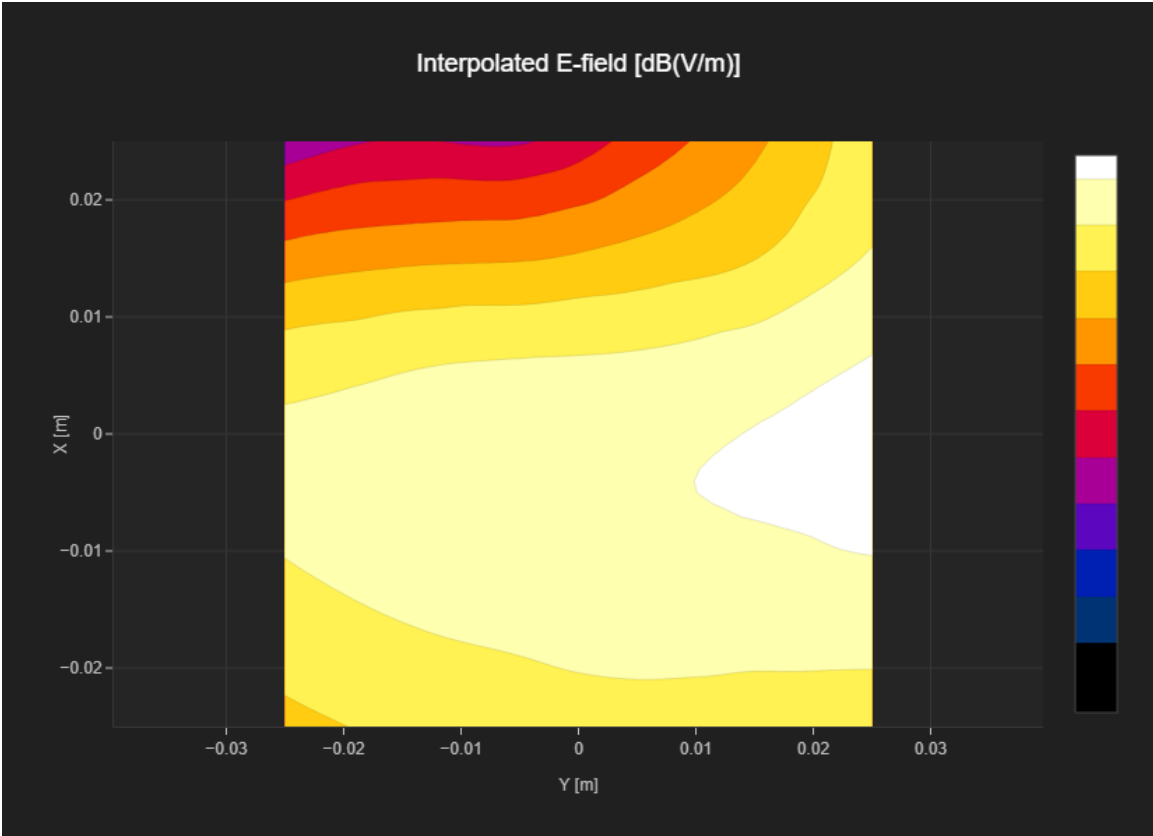
MIF	3.8
Channel Frequency [MHz]	810 1909.8
Communication Systems' Name	GPRS-FDD (TDMA, GMSK, TN 0)

Grid Settings

Extent X [mm]	50.0	Step X [mm]	10.0
Extent Y [mm]	50.0	Step Y [mm]	10.0
Distance [mm]	15.0		

Results

Emax [dBV/m]	24.39	Eavg 50x50 Max [dBV/m]	21.54
Drift [dB]	0.04	RFail [dBV/m]	25.34



PCS 1900 RF Interference Potential Test Report

Hardware Setup

Probe Calibration Date	EF3DV3 - SN4028 September 04, 2023
DAE Calibration Date	DAE4 Sn1546 March 11, 2024
Software Version	1.2.0.1713

Communication Systems

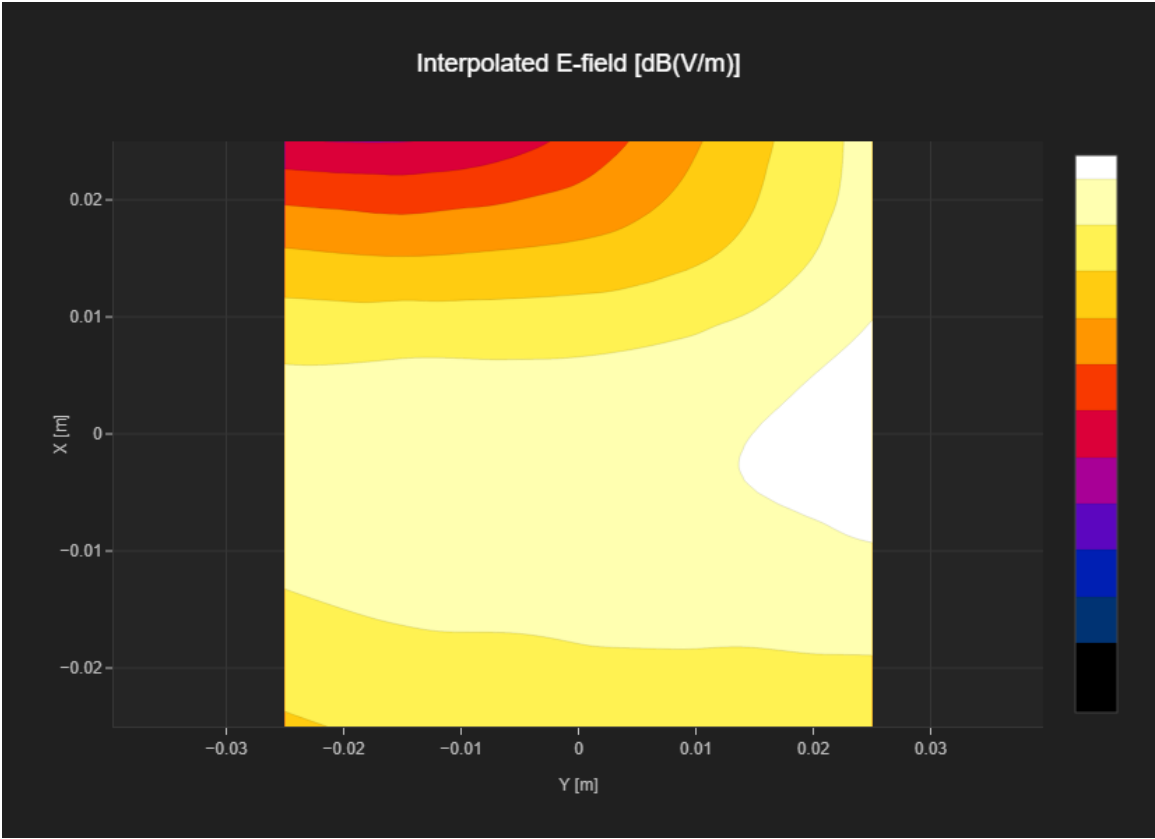
MIF	1.15
Channel Frequency [MHz]	512 1850.2
Communication Systems' Name	GPRS-FDD (TDMA, GMSK, TN 0-1)

Grid Settings

Extent X [mm]	50.0	Step X [mm]	10.0
Extent Y [mm]	50.0	Step Y [mm]	10.0
Distance [mm]	15.0		

Results

Emax [dBV/m]	25.53	Eavg 50x50 Max [dBV/m]	22.8
Drift [dB]	-0.14	RFail [dBV/m]	23.95



PCS 1900 RF Interference Potential Test Report

Hardware Setup

Probe Calibration Date	EF3DV3 - SN4028 September 04, 2023
DAE Calibration Date	DAE4 Sn1546 March 11, 2024
Software Version	1.2.0.1713

Communication Systems

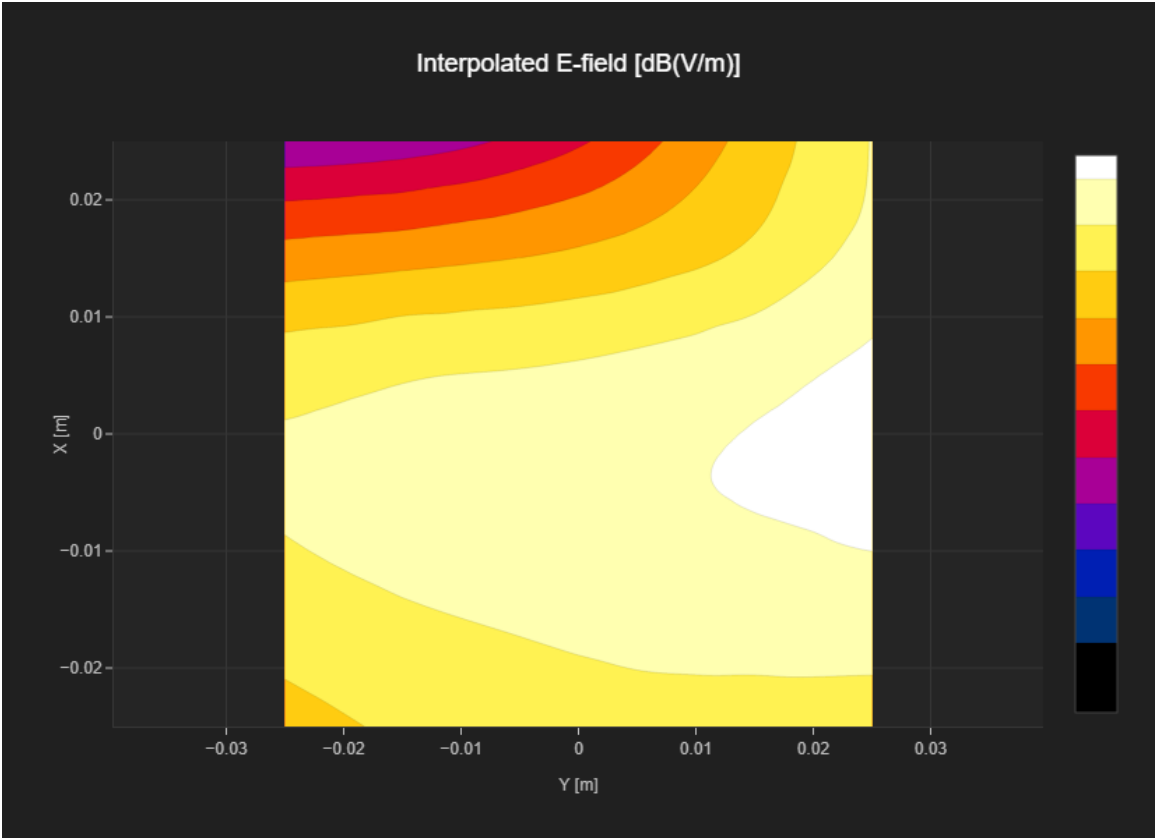
MIF	1.15
Channel Frequency [MHz]	661 1880.0
Communication Systems' Name	GPRS-FDD (TDMA, GMSK, TN 0-1)

Grid Settings

Extent X [mm]	50.0	Step X [mm]	10.0
Extent Y [mm]	50.0	Step Y [mm]	10.0
Distance [mm]	15.0		

Results

Emax [dBV/m]	26.45	Eavg 50x50 Max [dBV/m]	23.56
Drift [dB]	-0.07	RFail [dBV/m]	24.71



PCS 1900 RF Interference Potential Test Report

Hardware Setup

Probe Calibration Date	EF3DV3 - SN4028 September 04, 2023
DAE Calibration Date	DAE4 Sn1546 March 11, 2024
Software Version	1.2.0.1713

Communication Systems

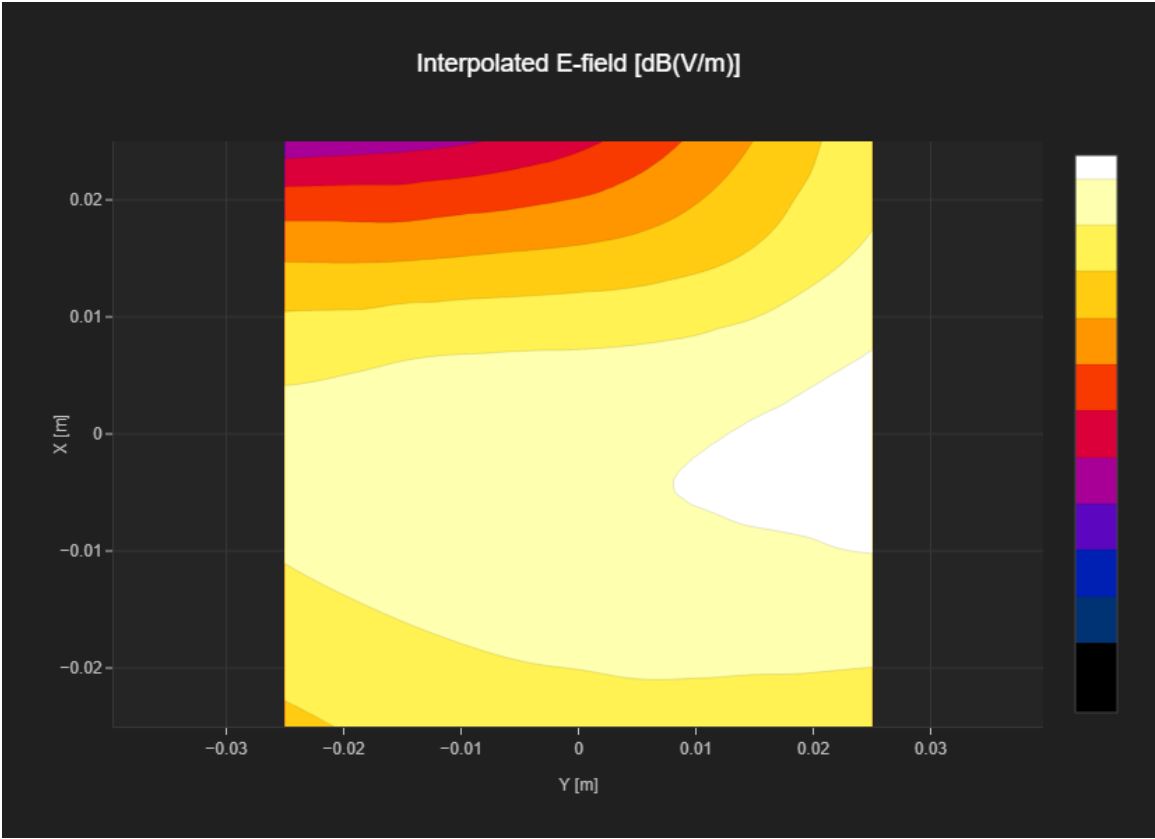
MIF	1.15
Channel Frequency [MHz]	810 1909.8
Communication Systems' Name	GPRS-FDD (TDMA, GMSK, TN 0-1)

Grid Settings

Extent X [mm]	50.0	Step X [mm]	10.0
Extent Y [mm]	50.0	Step Y [mm]	10.0
Distance [mm]	15.0		

Results

Emax [dBV/m]	26.48	Eavg 50x50 Max [dBV/m]	23.74
Drift [dB]	-0.02	RFail [dBV/m]	24.89



PCS 1900 RF Interference Potential Test Report

Hardware Setup

Probe Calibration Date	EF3DV3 - SN4028 September 04, 2023
DAE Calibration Date	DAE4 Sn1546 March 11, 2024
Software Version	1.2.0.1713

Communication Systems

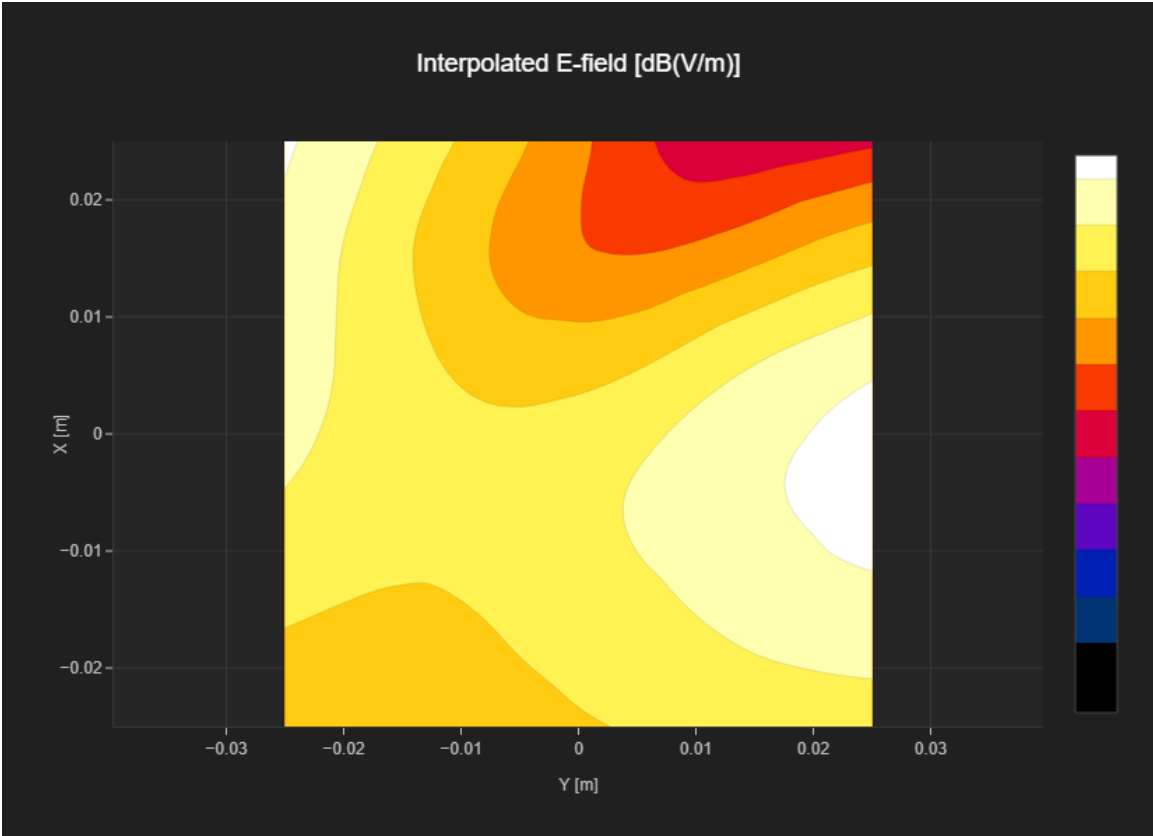
MIF	3.8
Channel Frequency [MHz]	512 1850.2
Communication Systems' Name	GPRS-FDD (TDMA, GMSK, TN 0)

Grid Settings

Extent X [mm]	50.0	Step X [mm]	10.0
Extent Y [mm]	50.0	Step Y [mm]	10.0
Distance [mm]	15.0		

Results

Emax [dBV/m]	24.8	Eavg 50x50 Max [dBV/m]	21.08
Drift [dB]	0.08	RFail [dBV/m]	24.88



PCS 1900 RF Interference Potential Test Report

Hardware Setup

Probe Calibration Date	EF3DV3 - SN4028 September 04, 2023
DAE Calibration Date	DAE4 Sn1546 March 11, 2024
Software Version	1.2.0.1713

Communication Systems

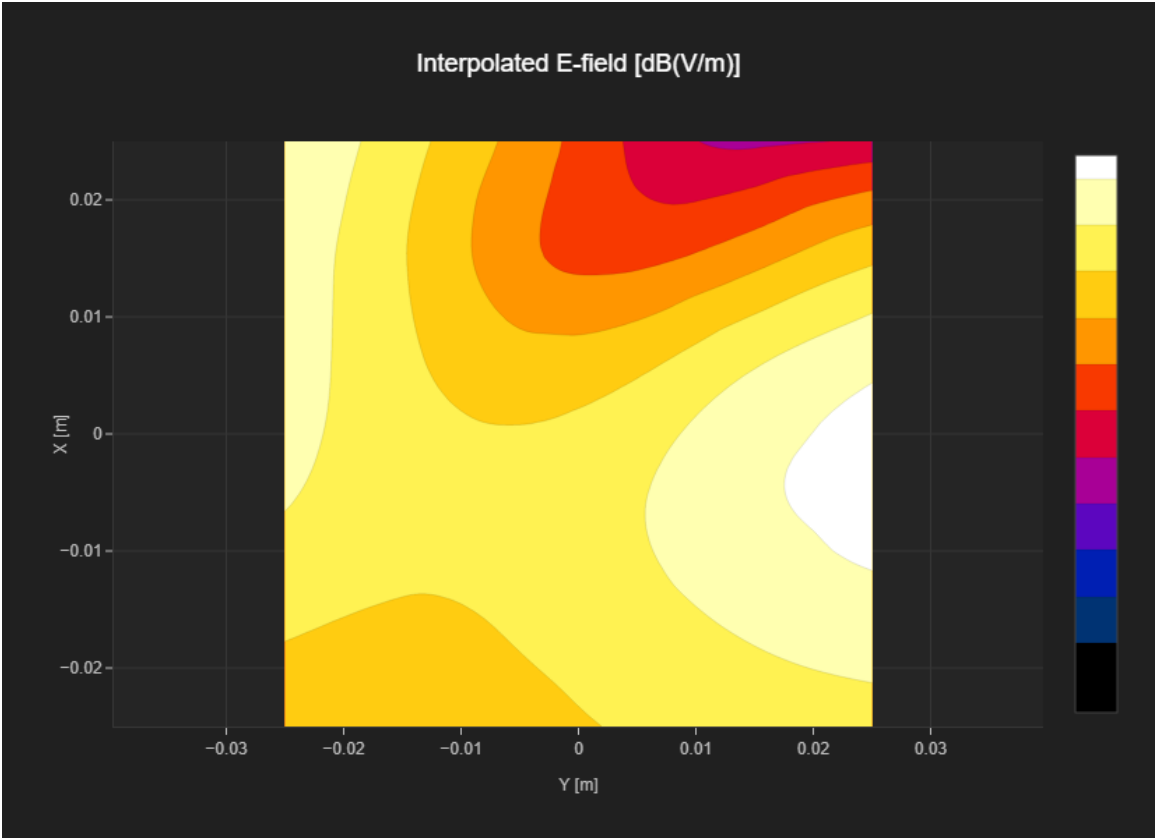
MIF	3.8
Channel Frequency [MHz]	661 1880.0
Communication Systems' Name	GPRS-FDD (TDMA, GMSK, TN 0)

Grid Settings

Extent X [mm]	50.0	Step X [mm]	10.0
Extent Y [mm]	50.0	Step Y [mm]	10.0
Distance [mm]	15.0		

Results

Emax [dBV/m]	25.58	Eavg 50x50 Max [dBV/m]	21.74
Drift [dB]	0.07	RFail [dBV/m]	25.54



PCS 1900 RF Interference Potential Test Report

Hardware Setup

Probe Calibration Date	EF3DV3 - SN4028 September 04, 2023
DAE Calibration Date	DAE4 Sn1546 March 11, 2024
Software Version	1.2.0.1713

Communication Systems

MIF	3.8
Channel Frequency [MHz]	810 1909.8
Communication Systems' Name	GPRS-FDD (TDMA, GMSK, TN 0)

Grid Settings

Extent X [mm]	50.0	Step X [mm]	10.0
Extent Y [mm]	50.0	Step Y [mm]	10.0
Distance [mm]	15.0		

Results

Emax [dBV/m]	25.44	Eavg 50x50 Max [dBV/m]	21.43
Drift [dB]	-0.13	RFail [dBV/m]	25.23

