

PCS 1900 RF Interference Potential Test Report

Hardware Setup

Probe Calibration Date	EF3DV3 - SN4028 September 04, 2023
DAE Calibration Date	DAE4 Sn1546 March 11, 2024
Software Version	1.2.0.1713

Communication Systems

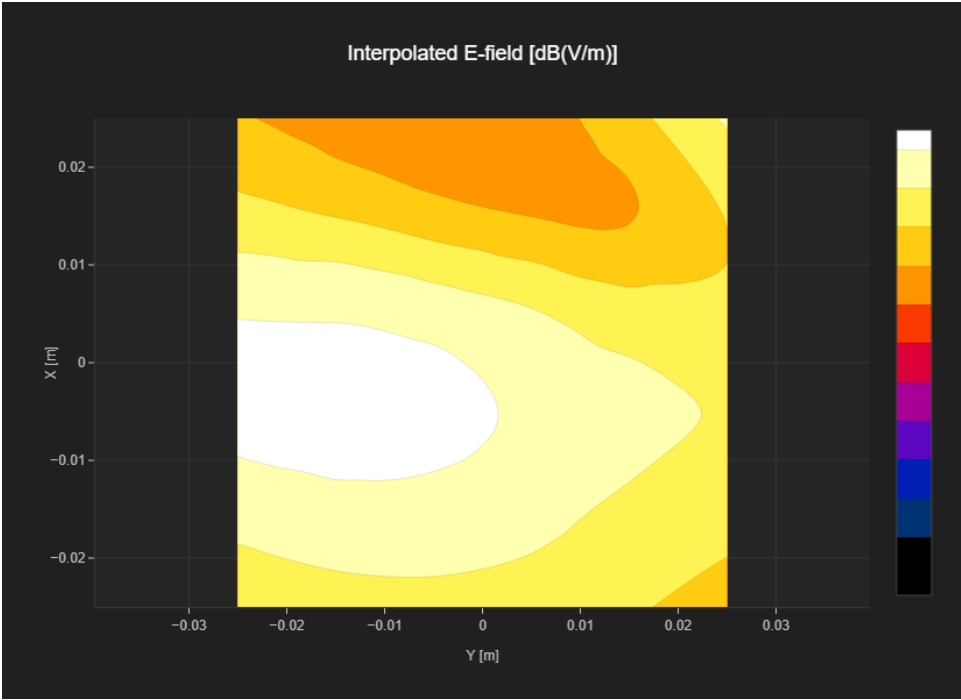
MIF	3.8
Channel Frequency [MHz]	512 1850.2
Communication Systems' Name	GPRS-FDD (TDMA, GMSK, TN 0)

Grid Settings

Extent X [mm]	50.0	Step X [mm]	10.0
Extent Y [mm]	50.0	Step Y [mm]	10.0
Distance [mm]	15.0		

Results

Emax [dBV/m]	24.57	Eavg 50x50 Max [dBV/m]	21.95
Drift [dB]	-0.01	RFail [dBV/m]	25.75



PCS 1900 RF Interference Potential Test Report

Hardware Setup

Probe Calibration Date	EF3DV3 - SN4028 September 04, 2023
DAE Calibration Date	DAE4 Sn1546 March 11, 2024
Software Version	1.2.0.1713

Communication Systems

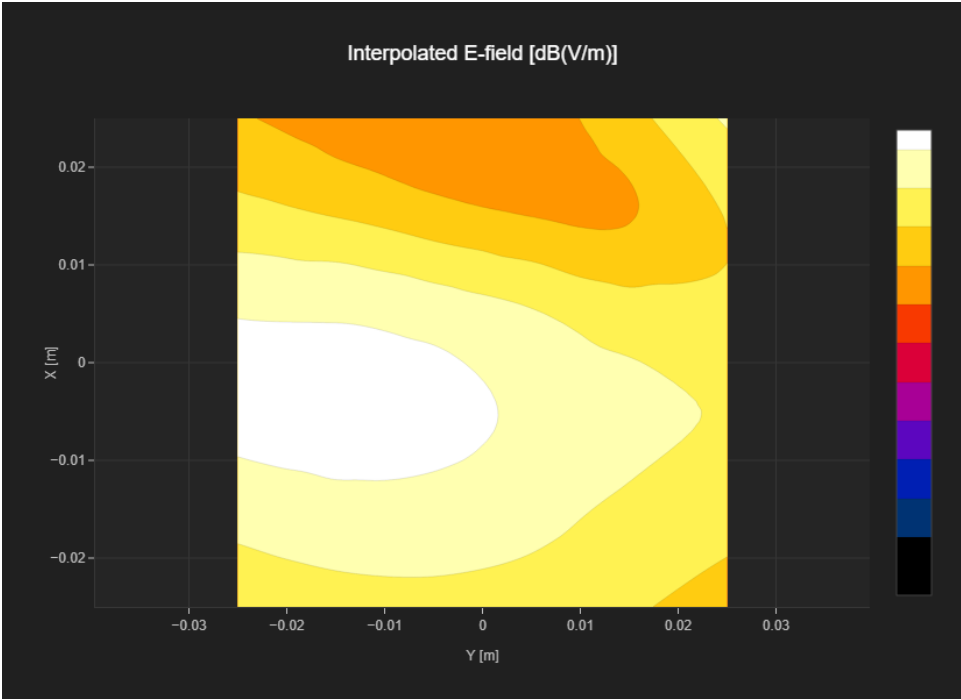
MIF	3.8
Channel Frequency [MHz]	661 1880.0
Communication Systems' Name	GPRS-FDD (TDMA, GMSK, TN 0)

Grid Settings

Extent X [mm]	50.0	Step X [mm]	10.0
Extent Y [mm]	50.0	Step Y [mm]	10.0
Distance [mm]	15.0		

Results

Emax [dBV/m]	23.84	Eavg 50x50 Max [dBV/m]	21.12
Drift [dB]	-0.05	RFail [dBV/m]	24.92



PCS 1900 RF Interference Potential Test Report

Hardware Setup

Probe Calibration Date	EF3DV3 - SN4028 September 04, 2023
DAE Calibration Date	DAE4 Sn1546 March 11, 2024
Software Version	1.2.0.1713

Communication Systems

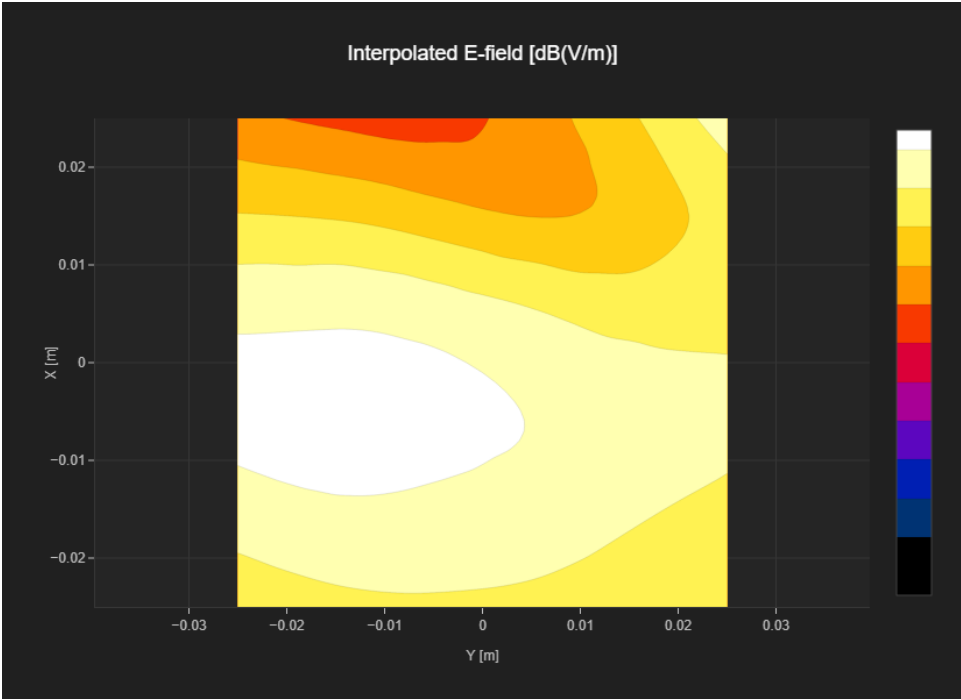
MIF	3.8
Channel Frequency [MHz]	810 1909.8
Communication Systems' Name	GPRS-FDD (TDMA, GMSK, TN 0)

Grid Settings

Extent X [mm]	50.0	Step X [mm]	10.0
Extent Y [mm]	50.0	Step Y [mm]	10.0
Distance [mm]	15.0		

Results

Emax [dBV/m]	23.86	Eavg 50x50 Max [dBV/m]	21.31
Drift [dB]	0.09	RFail [dBV/m]	25.11



PCS 1900 RF Interference Potential Test Report

Hardware Setup

Probe Calibration Date	EF3DV3 - SN4028 September 04, 2023
DAE Calibration Date	DAE4 Sn1546 March 11, 2024
Software Version	1.2.0.1713

Communication Systems

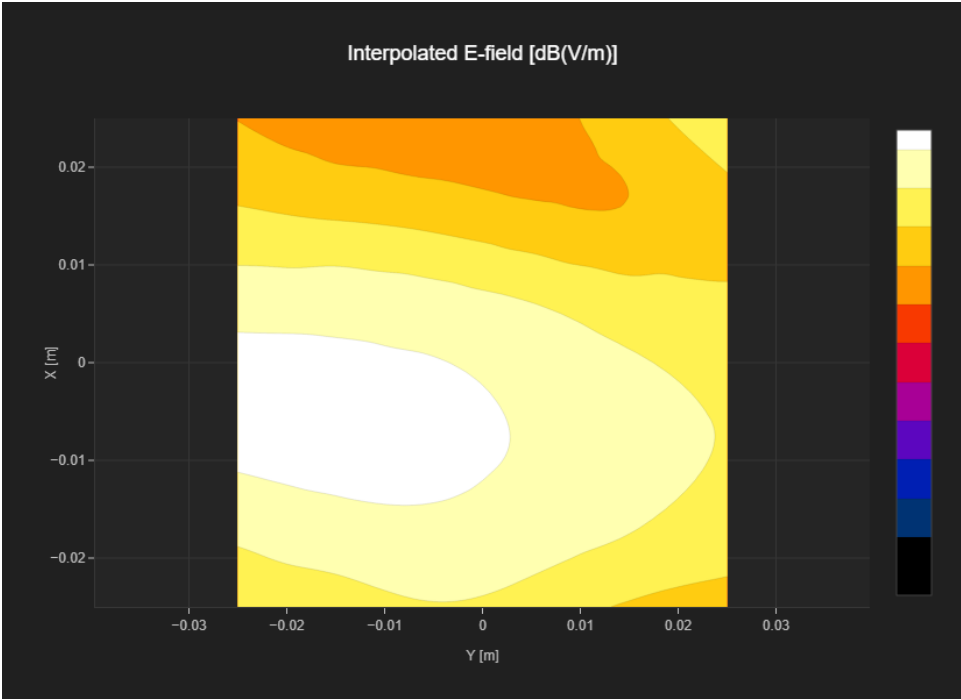
MIF	1.15
Channel Frequency [MHz]	512 1850.2
Communication Systems' Name	GPRS-FDD (TDMA, GMSK, TN 0-1)

Grid Settings

Extent X [mm]	50.0	Step X [mm]	10.0
Extent Y [mm]	50.0	Step Y [mm]	10.0
Distance [mm]	15.0		

Results

Emax [dBV/m]	25.97	Eavg 50x50 Max [dBV/m]	23.37
Drift [dB]	0.09	RFail [dBV/m]	24.52



PCS 1900 RF Interference Potential Test Report

Hardware Setup

Probe Calibration Date	EF3DV3 - SN4028 September 04, 2023
DAE Calibration Date	DAE4 Sn1546 March 11, 2024
Software Version	1.2.0.1713

Communication Systems

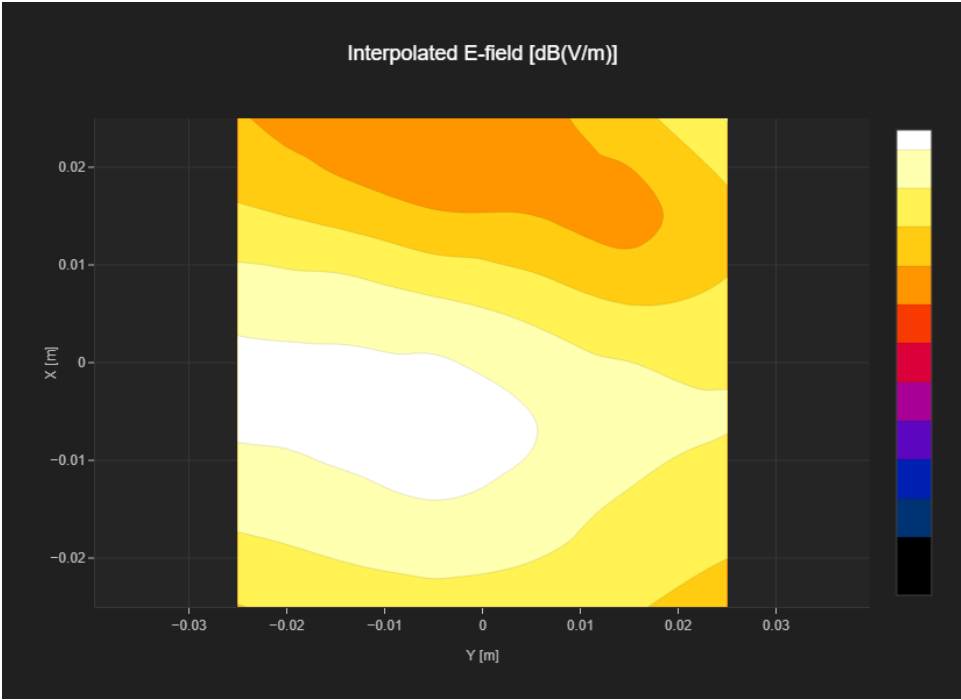
MIF	1.15
Channel Frequency [MHz]	661 1880.0
Communication Systems' Name	GPRS-FDD (TDMA, GMSK, TN 0-1)

Grid Settings

Extent X [mm]	50.0	Step X [mm]	10.0
Extent Y [mm]	50.0	Step Y [mm]	10.0
Distance [mm]	15.0		

Results

Emax [dBV/m]	25.72	Eavg 50x50 Max [dBV/m]	22.88
Drift [dB]	0.59	RFail [dBV/m]	24.03



PCS 1900 RF Interference Potential Test Report

Hardware Setup

Probe Calibration Date	EF3DV3 - SN4028 September 04, 2023
DAE Calibration Date	DAE4 Sn1546 March 11, 2024
Software Version	1.2.0.1713

Communication Systems

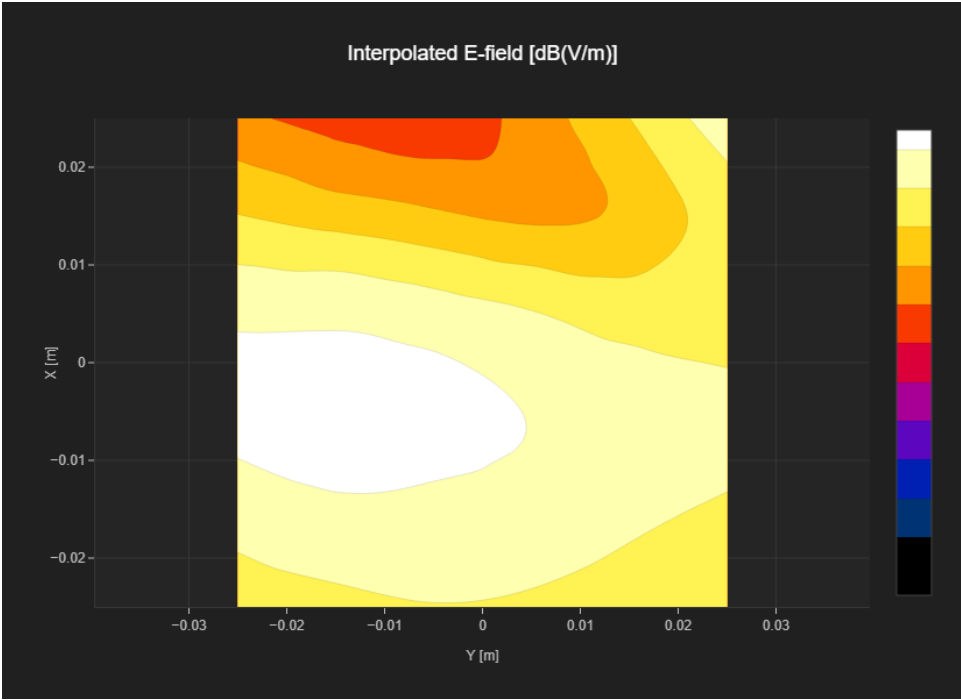
MIF	1.15
Channel Frequency [MHz]	810 1909.8
Communication Systems' Name	GPRS-FDD (TDMA, GMSK, TN 0-1)

Grid Settings

Extent X [mm]	50.0	Step X [mm]	10.0
Extent Y [mm]	50.0	Step Y [mm]	10.0
Distance [mm]	15.0		

Results

Emax [dBV/m]	25.14	Eavg 50x50 Max [dBV/m]	22.54
Drift [dB]	-0.13	RFail [dBV/m]	23.69



PCS 1900 RF Interference Potential Test Report

Hardware Setup

Probe Calibration Date	EF3DV3 - SN4028 September 04, 2023
DAE Calibration Date	DAE4 Sn1546 March 11, 2024
Software Version	1.2.0.1713

Communication Systems

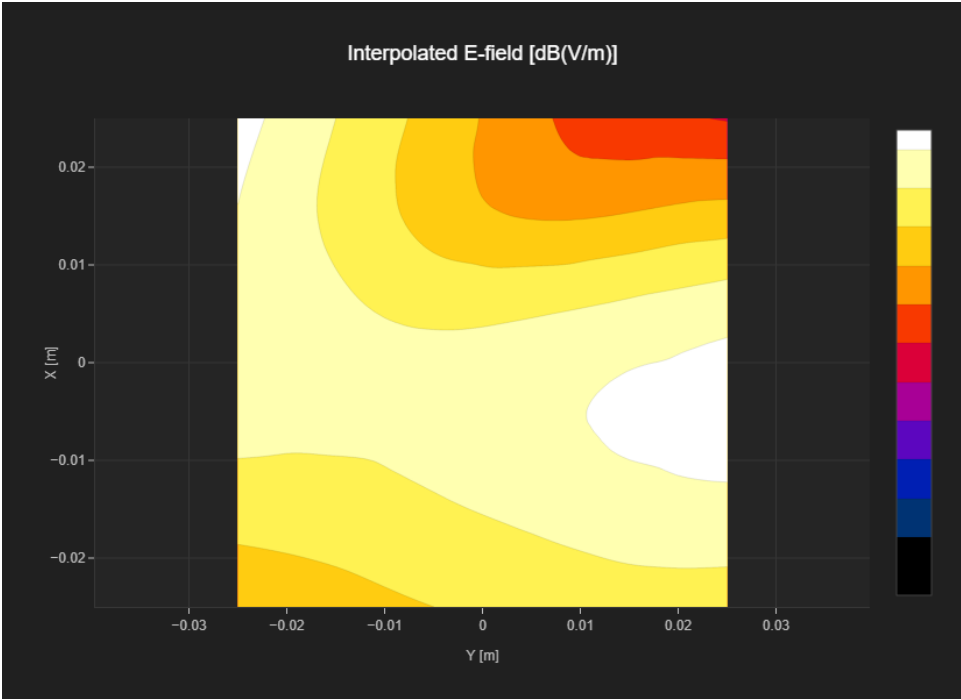
MIF	3.8
Channel Frequency [MHz]	512 1850.2
Communication Systems' Name	GPRS-FDD (TDMA, GMSK, TN 0)

Grid Settings

Extent X [mm]	50.0	Step X [mm]	10.0
Extent Y [mm]	50.0	Step Y [mm]	10.0
Distance [mm]	15.0		

Results

Emax [dBV/m]	24.96	Eavg 50x50 Max [dBV/m]	22.13
Drift [dB]	-0.05	RFail [dBV/m]	25.93



PCS 1900 RF Interference Potential Test Report

Hardware Setup

Probe Calibration Date	EF3DV3 - SN4028 September 04, 2023
DAE Calibration Date	DAE4 Sn1546 March 11, 2024
Software Version	1.2.0.1713

Communication Systems

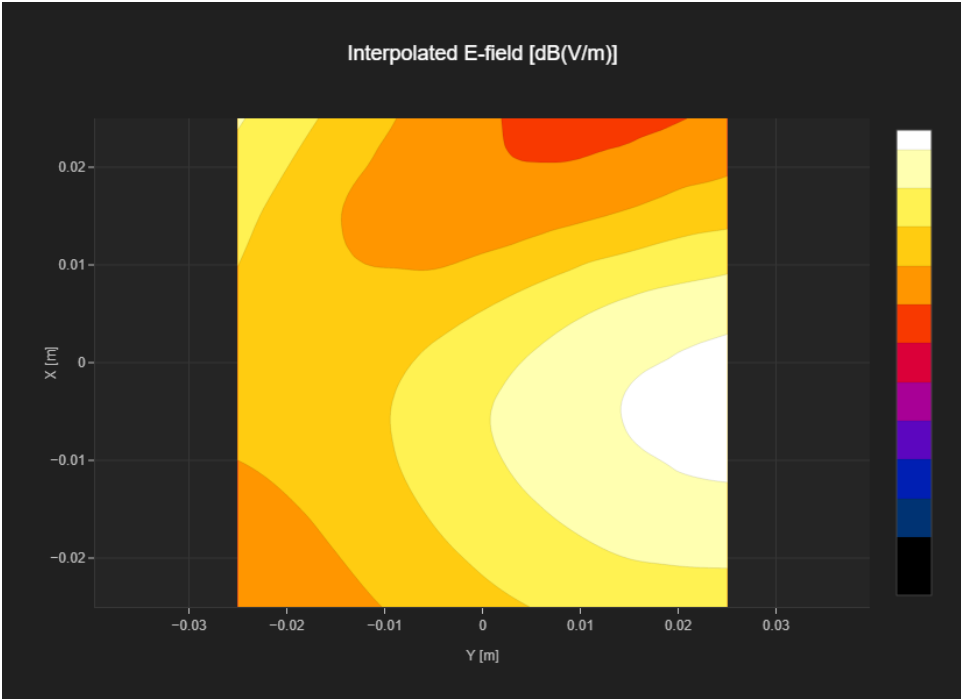
MIF	3.8
Channel Frequency [MHz]	661 1880.0
Communication Systems' Name	GPRS-FDD (TDMA, GMSK, TN 0)

Grid Settings

Extent X [mm]	50.0	Step X [mm]	10.0
Extent Y [mm]	50.0	Step Y [mm]	10.0
Distance [mm]	15.0		

Results

Emax [dBV/m]	26.95	Eavg 50x50 Max [dBV/m]	22.89
Drift [dB]	0.01	RFail [dBV/m]	26.69



PCS 1900 RF Interference Potential Test Report

Hardware Setup

Probe Calibration Date	EF3DV3 - SN4028 September 04, 2023
DAE Calibration Date	DAE4 Sn1546 March 11, 2024
Software Version	1.2.0.1713

Communication Systems

MIF	3.8
Channel Frequency [MHz]	810 1909.8
Communication Systems' Name	GPRS-FDD (TDMA, GMSK, TN 0)

Grid Settings

Extent X [mm]	50.0	Step X [mm]	10.0
Extent Y [mm]	50.0	Step Y [mm]	10.0
Distance [mm]	15.0		

Results

Emax [dBV/m]	27.2	Eavg 50x50 Max [dBV/m]	22.81
Drift [dB]	0.02	RFail [dBV/m]	26.61

