

Measurement Report for Custom Band: CW, FRONT

Exposure Conditions

Band	Custom Band	Phantom Section	5G
Frequency [MHz]   Channel Number	10000.0   10000000	Conversion Factor	1.0
Group   UID	CW, 0--	Position   Test Distance [mm]	FRONT   10.00

Hardware Setup

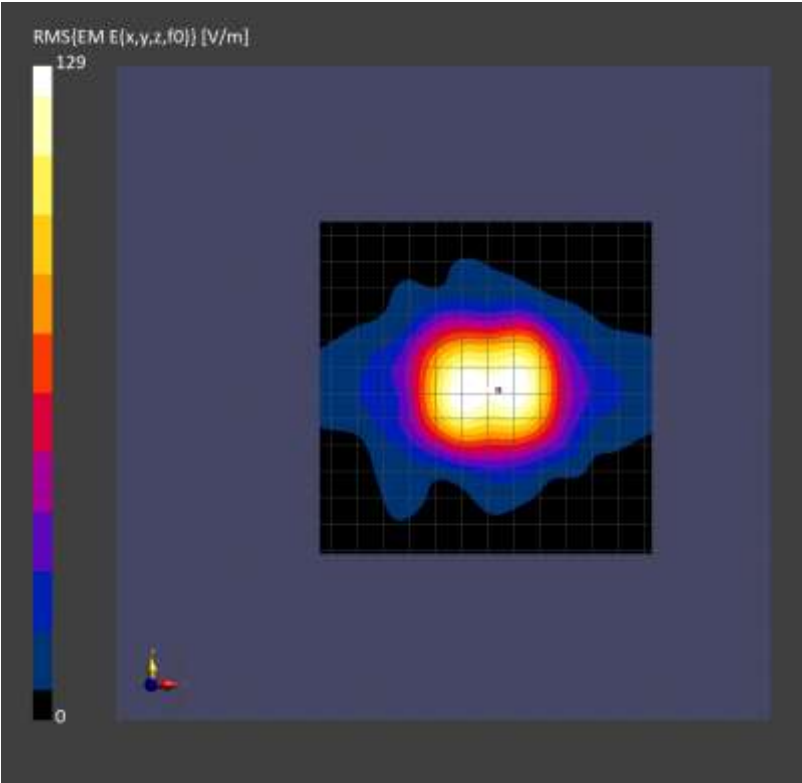
Probe   Calibration Date	EUmmWV4 - SN9589_F1-55GHz   2022-09-20	Phantom	mmWave   xxxx
DAE   Calibration Date	DAE4 Sn1377   2022-09-15	Medium	Air   -
Software Version	3.2.2.2358		

Scan Setup

Scan Type	5G Scan	Grid Extents [mm]	120.0 x 120.0
Grid Steps [lambda]	0.25 x 0.25	Sensor Surface [mm]	10.0

Measurement Results

Avg. Area [cm²]	4.00
psPDn+ [W/m²]	38.6
psPDtot+ [W/m²]	39.1
psPDmod+ [W/m²]	39.3
E <sub>max</sub> [V/m]	129
Power Drift [dB]	0.01



Measurement Report for Custom Band: CW, FRONT

Exposure Conditions

Band	Custom Band	Phantom Section	5G
Frequency [MHz]   Channel Number	10000.0   10000000	Conversion Factor	1.0
Group   UID	CW, 0--	Position   Test Distance [mm]	FRONT   10.00

Hardware Setup

Probe   Calibration Date	EUmmWV4 - SN9496_F1-55GHz   2023-02-20	Phantom	mmWave   xxxx
DAE   Calibration Date	DAE4 Sn1540   2023-01-23	Medium	Air   -
Software Version	3.2.2.2358		

Scan Setup

Scan Type	5G Scan	Grid Extents [mm]	120.0 x 120.0
Grid Steps [lambda]	0.25 x 0.25	Sensor Surface [mm]	10.0

Measurement Results

Avg. Area [cm²]	4.00
psPDn+ [W/m²]	40.2
psPDtot+ [W/m²]	40.3
psPDmod+ [W/m²]	40.6
E <sub>max</sub> [V/m]	133
Power Drift [dB]	0.04

