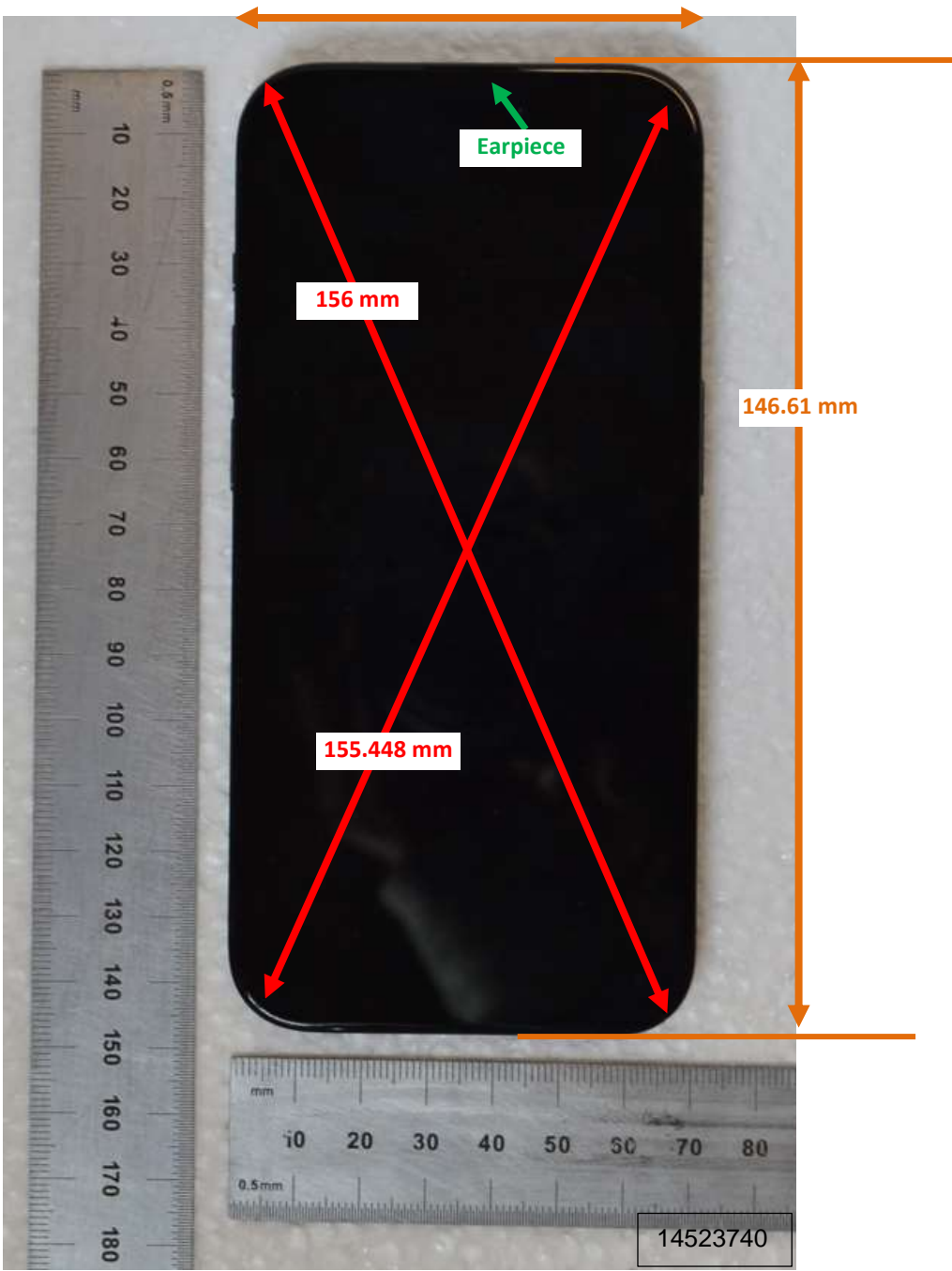


DUT and SAR Set-up Photos

Photograph 1: Overall Dimensions



Photograph 2: Front View of the DUT



Photograph 3: Back View of the DUT

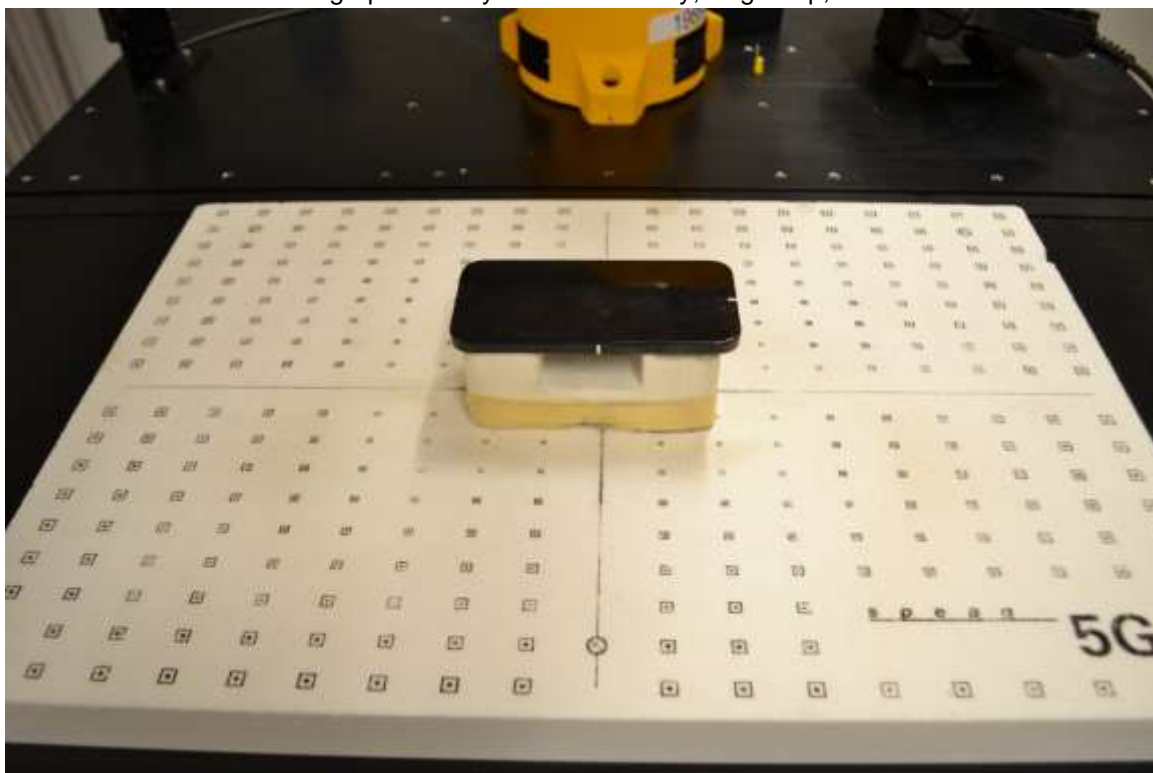


Body-worn Accessory & Hotspot mode Exposure Conditions

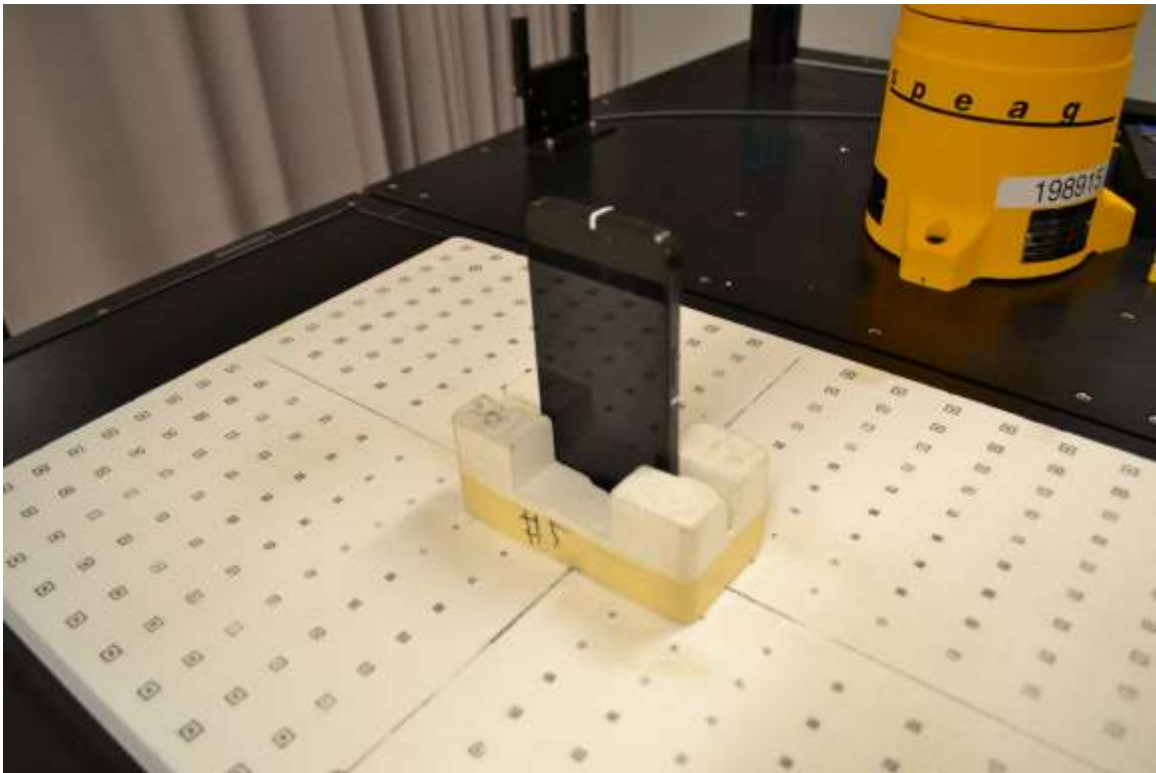
Photograph 4: Body-worn Accessory, Rear, 2 & 5 mm



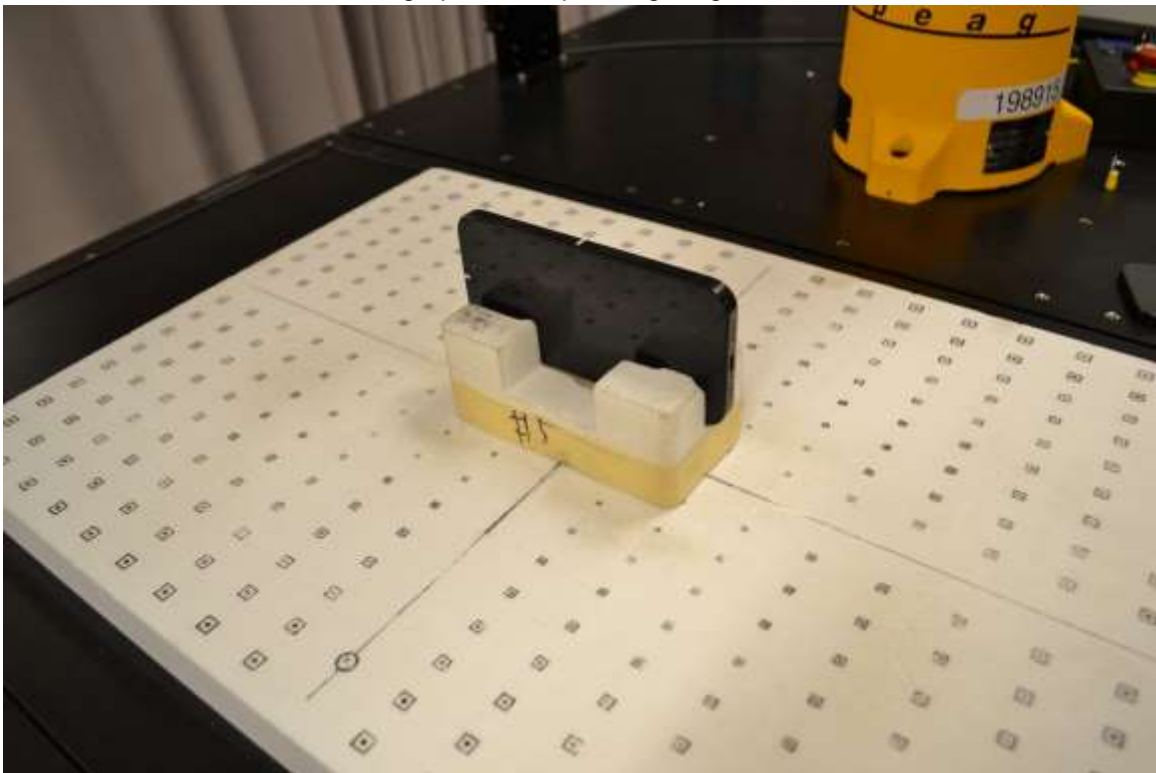
Photograph 5: Body-worn Accessory, Edge Top, 2 mm



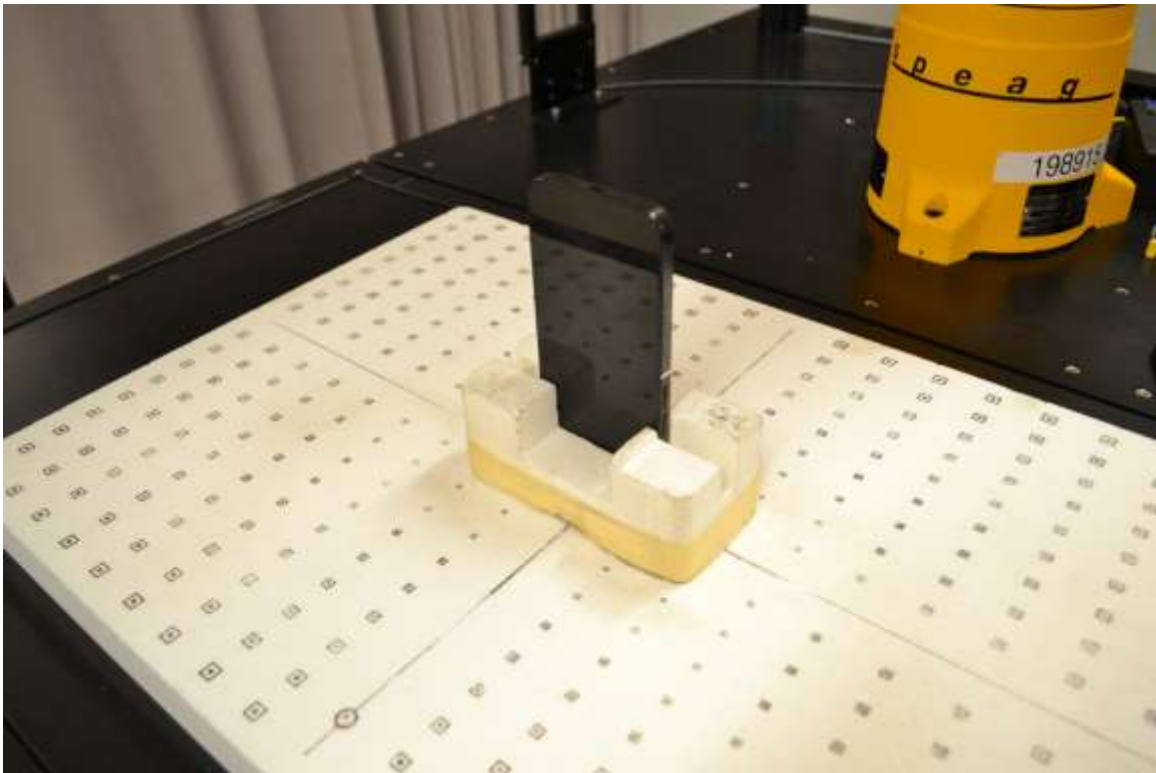
Photograph 6: Hotspot, Edge Top, 2 mm



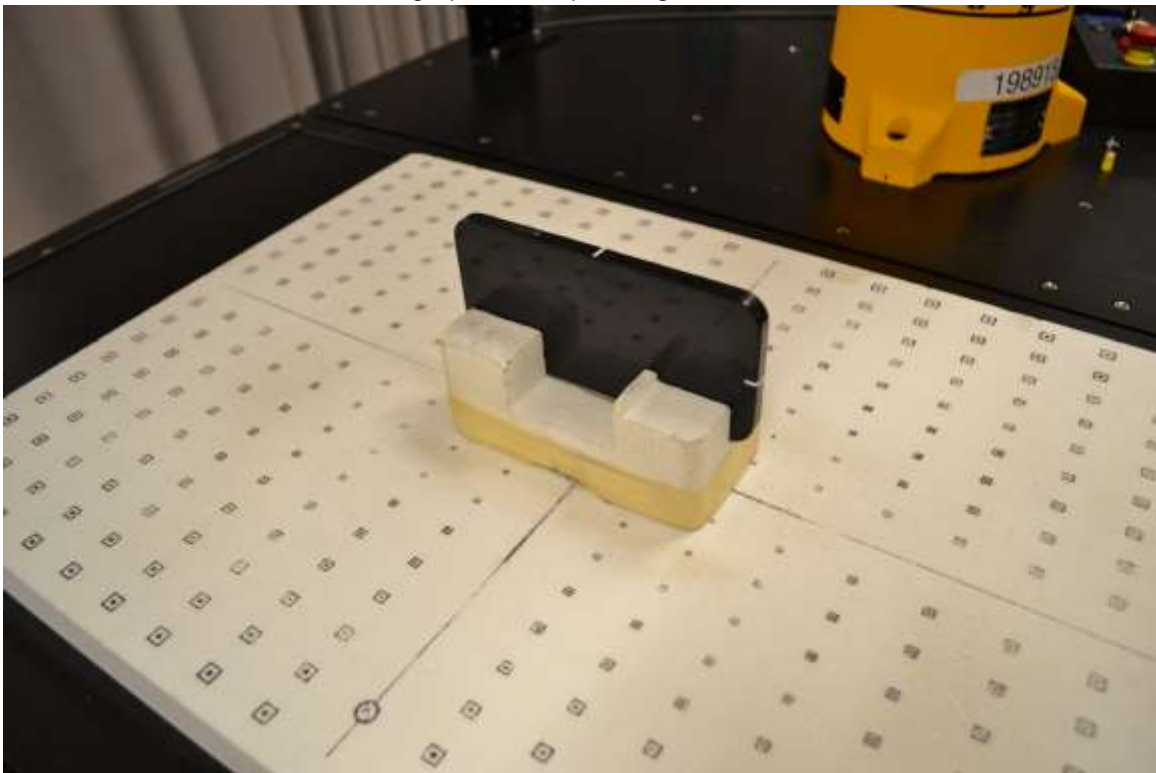
Photograph 7: Hotspot, Edge Right, 2 mm



Photograph 8: Hotspot, Edge Bottom, 2 mm



Photograph 9: Hotspot, Edge Left, 2 mm



Antenna Dimensions & Separation Distances

