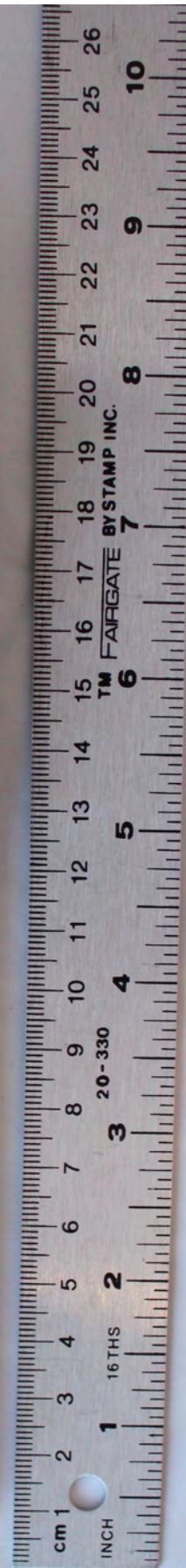
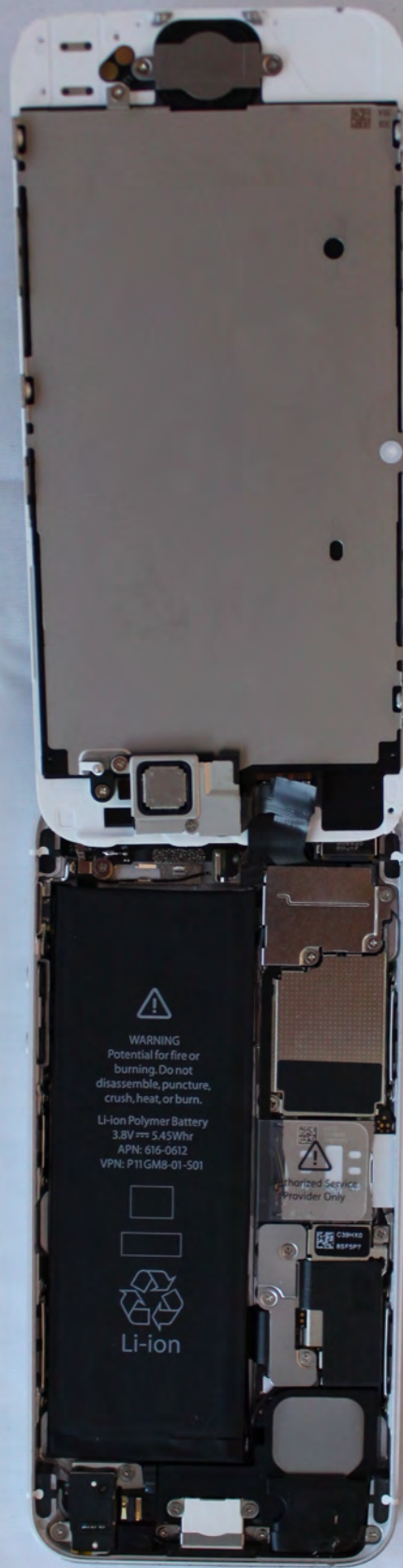
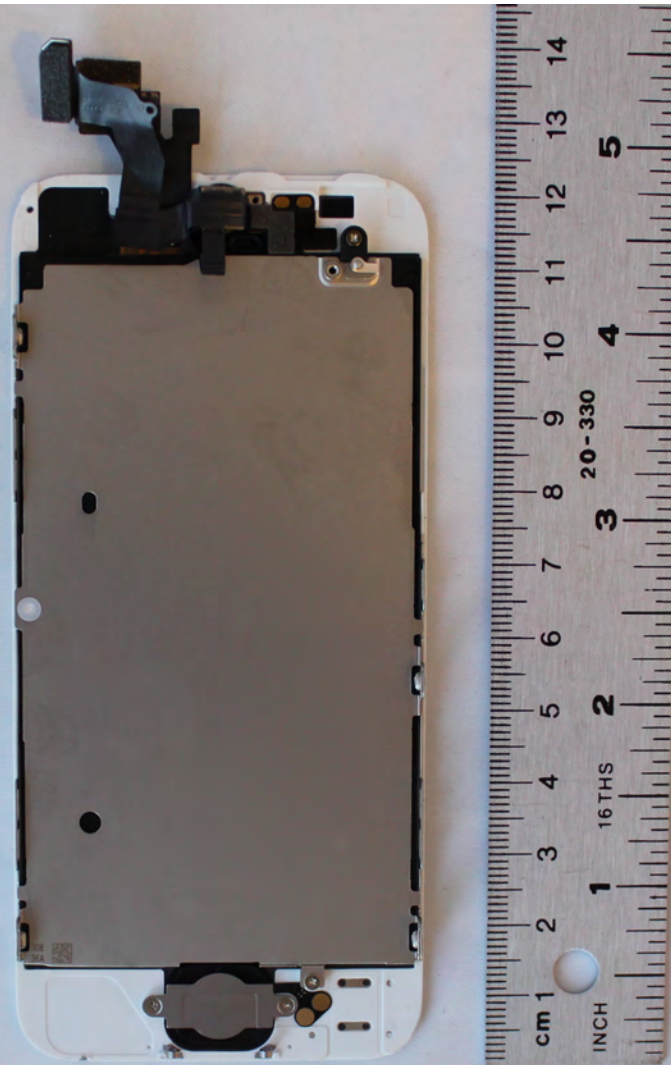


A1428

Touch panel and LCD display removed

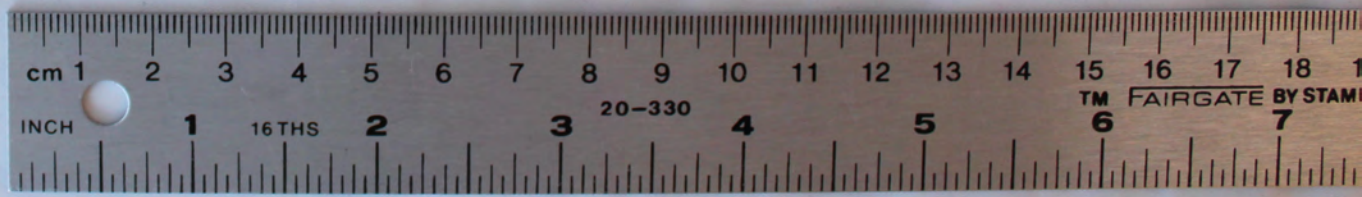


A1428  
LCD Display and Touch Panel - Back



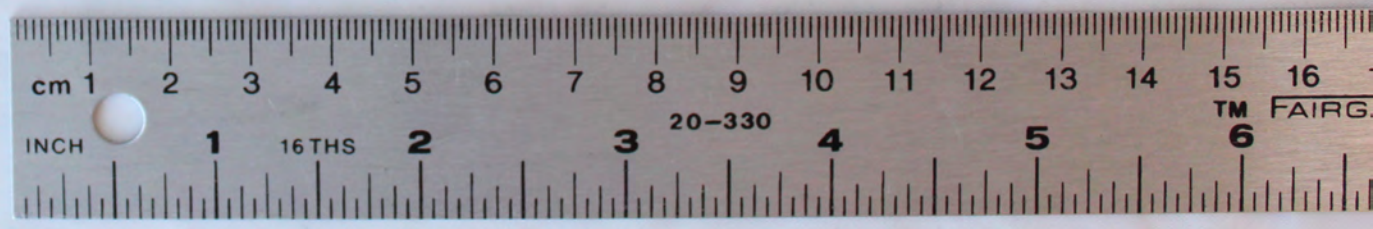
A1428

LCD Display and Touch Panel - Front

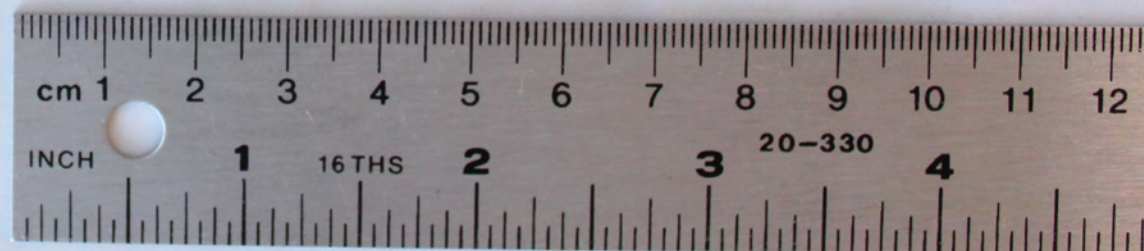
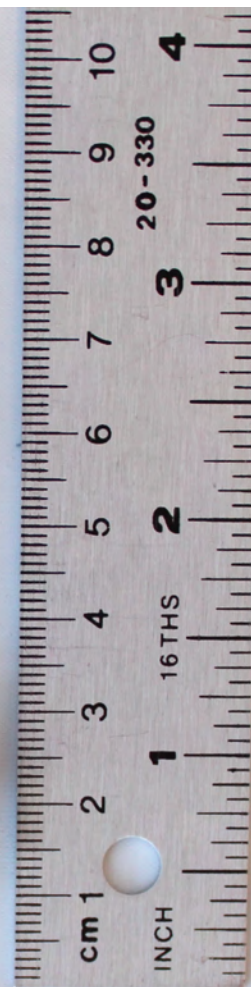


Apple Proprietary and Confidential

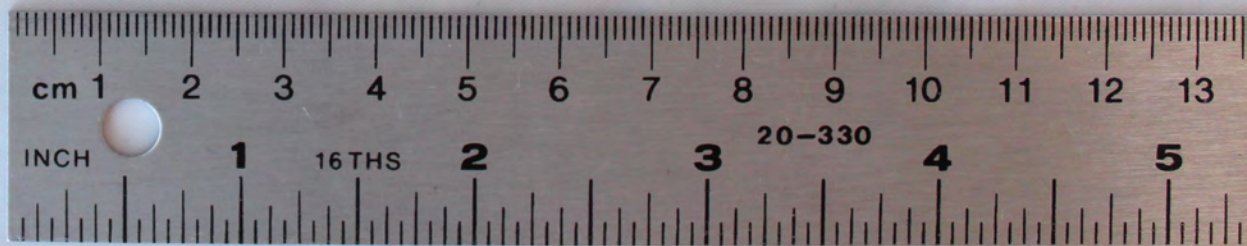
A1428  
Display and Touch Panel Assembly removed



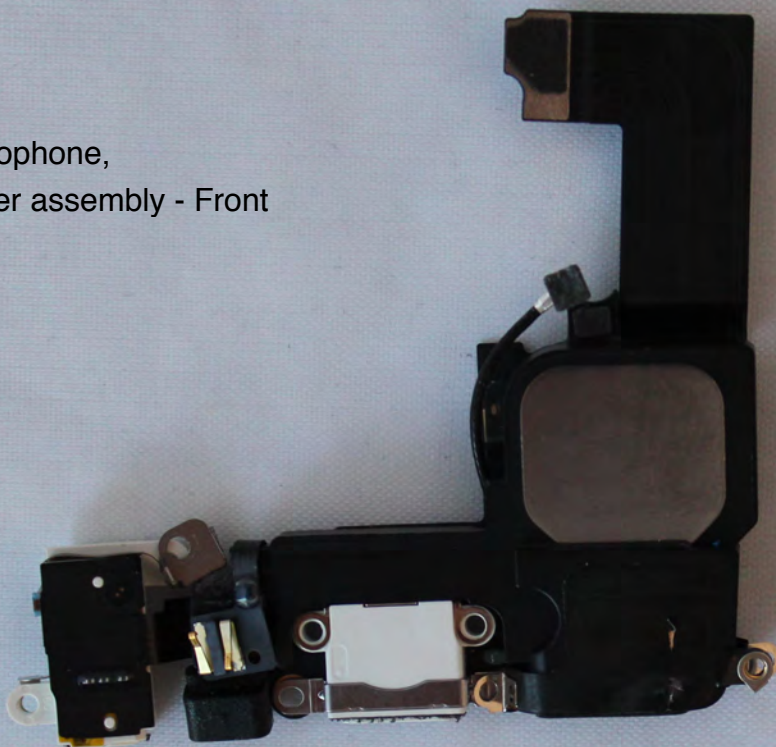
A1428  
Battery - Front



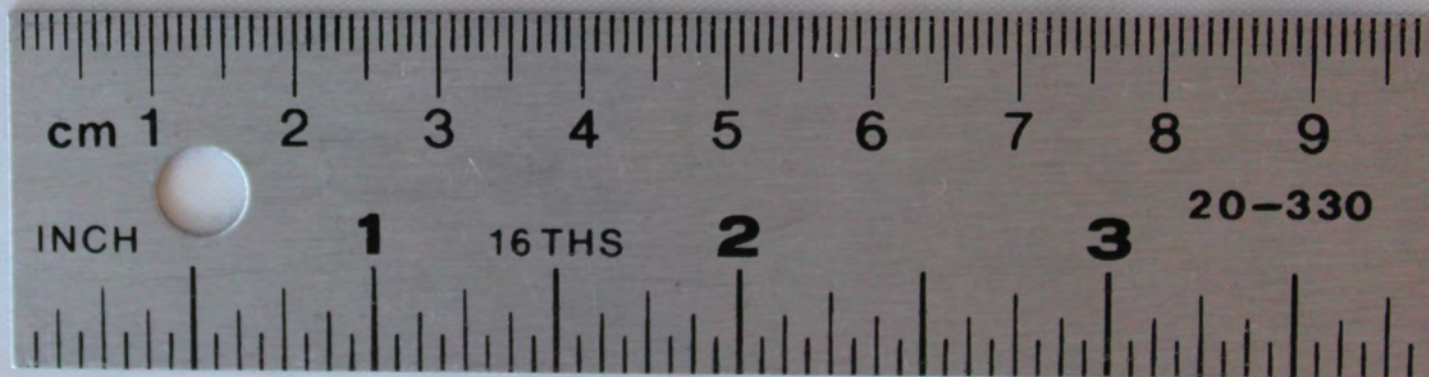
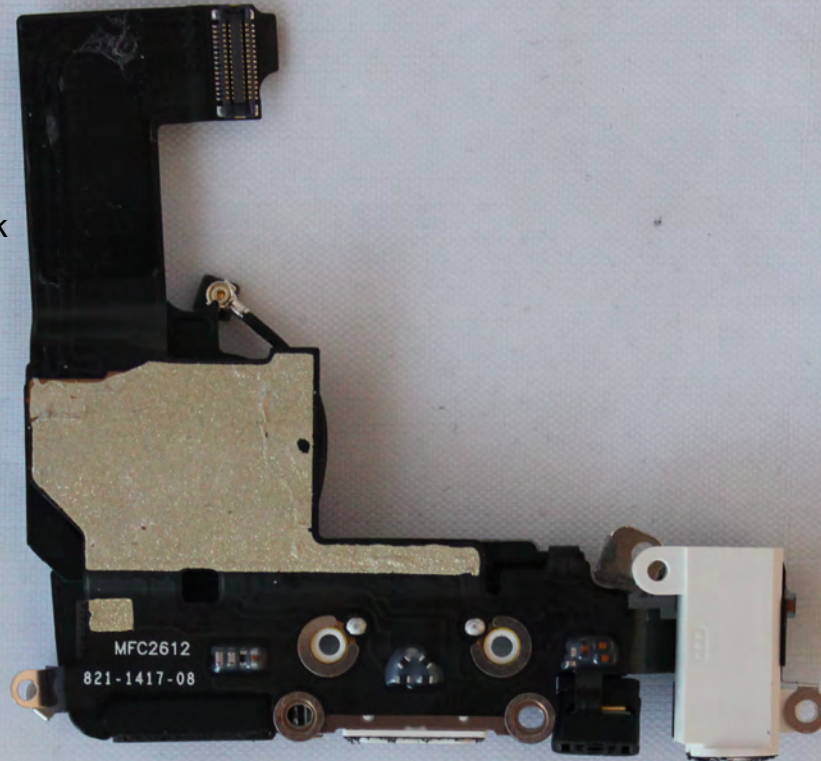
A1428  
Battery - Back



A1428  
Headphone jack, Microphone,  
I/O Connector, Speaker assembly - Front

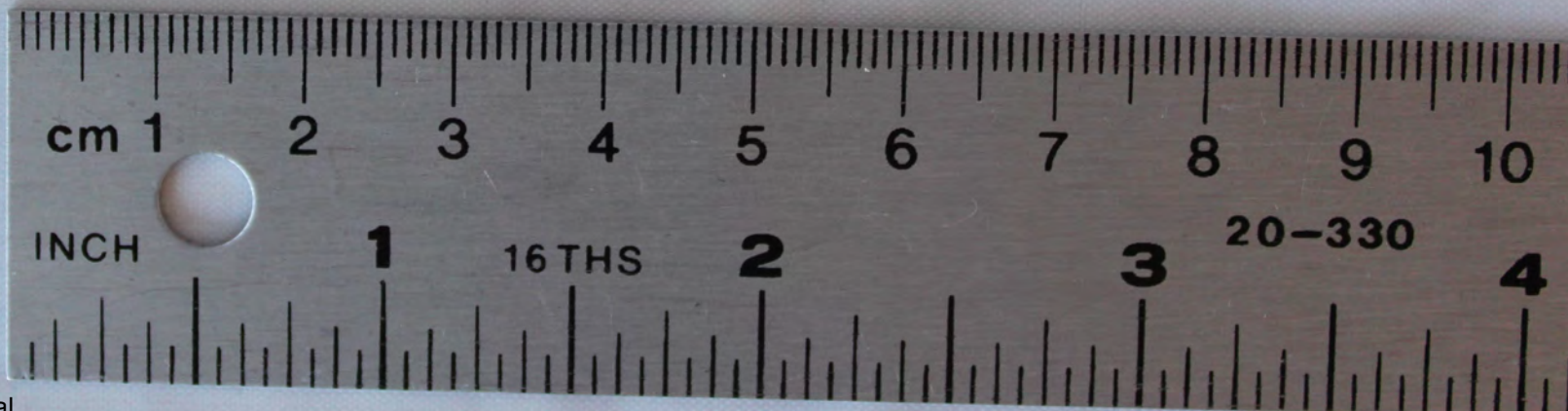
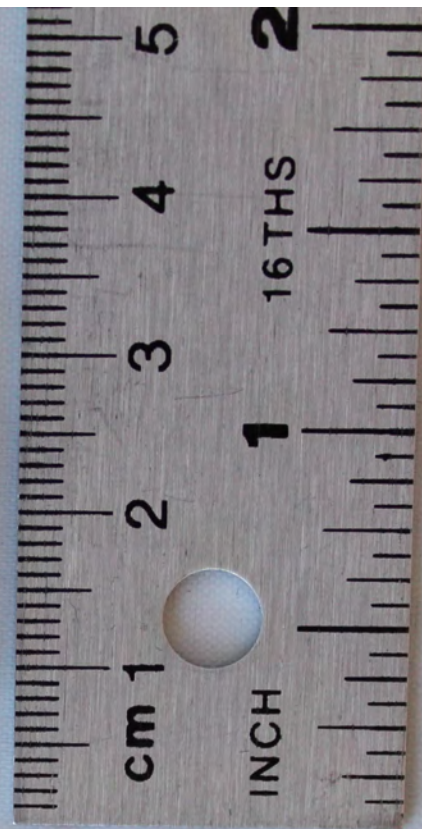
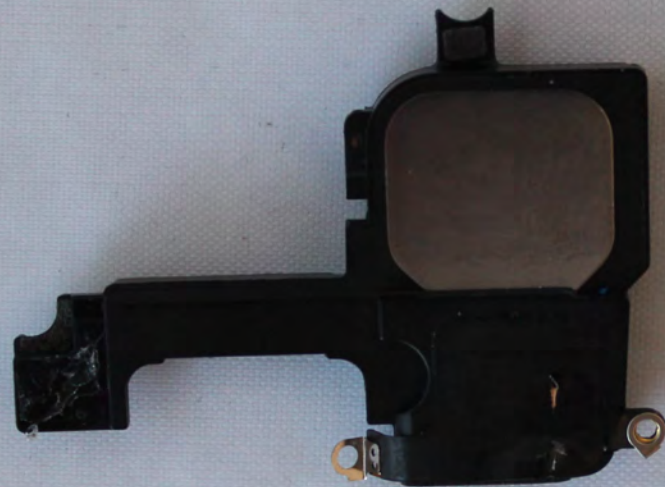


A1428  
Headphone jack, Microphone,  
I/O Connector, Speaker assembly - Back

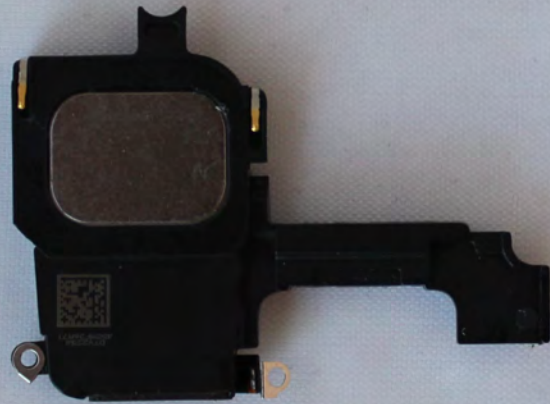




A1428  
Speaker Assembly - Front

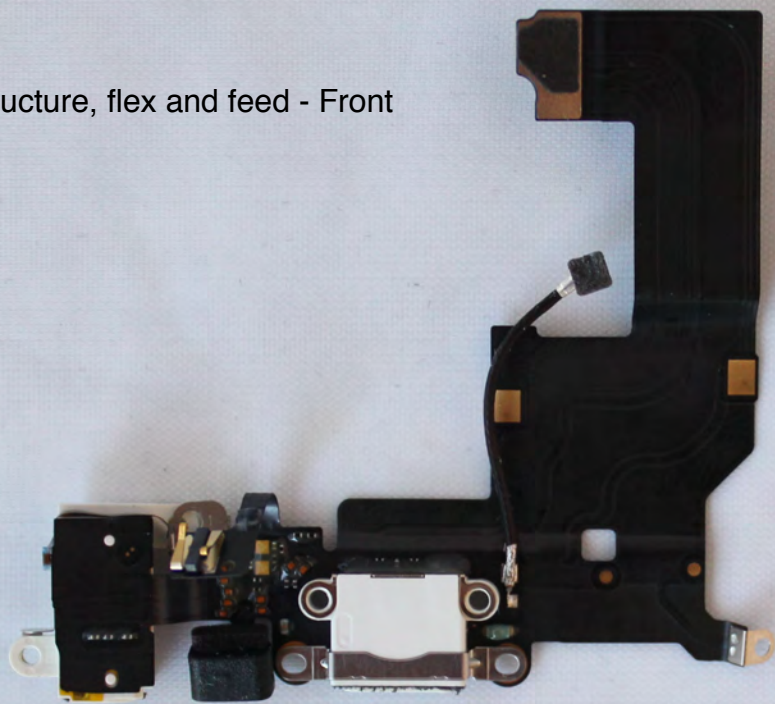


A1428  
Speaker Assembly - Back



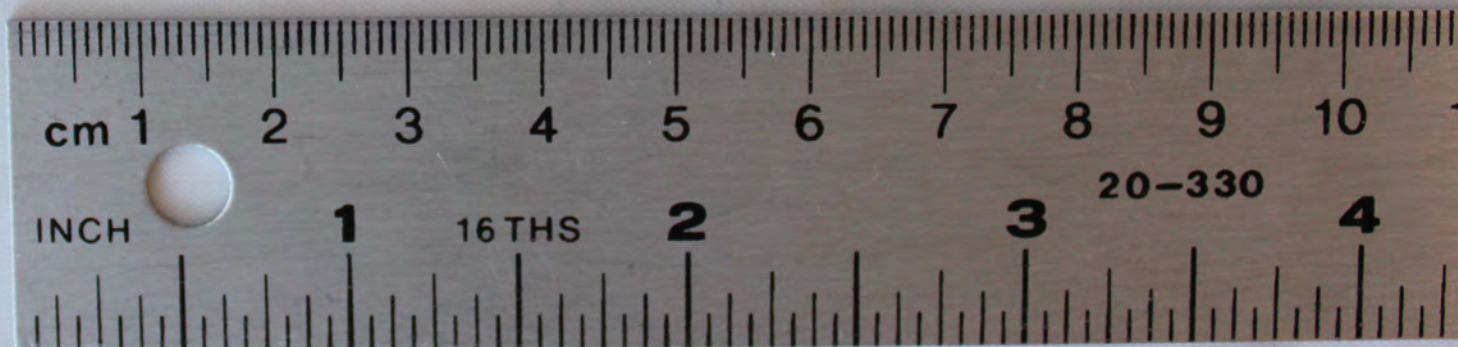
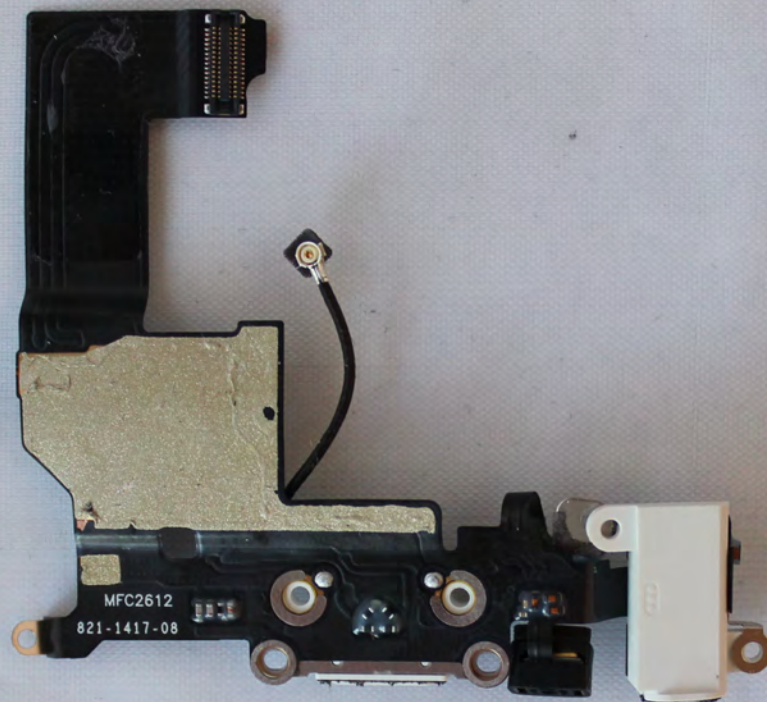
A1428

Lower Cellular Antenna structure, flex and feed - Front



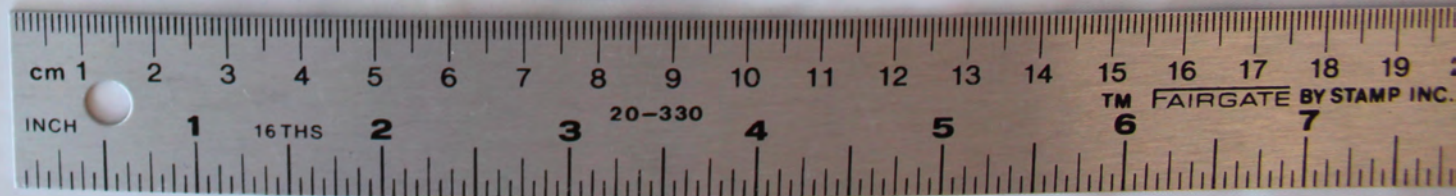
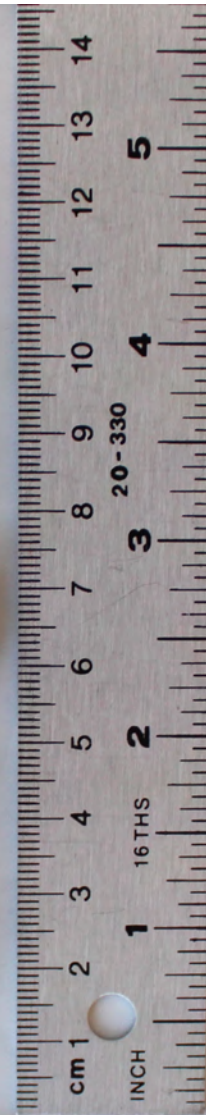
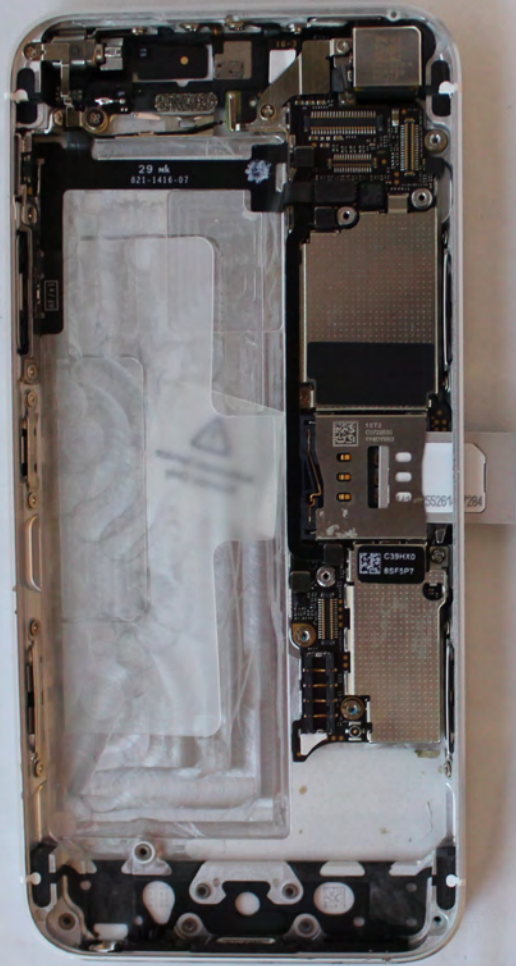
A1428

Lower Cellular Antenna structure, flex and feed - Back



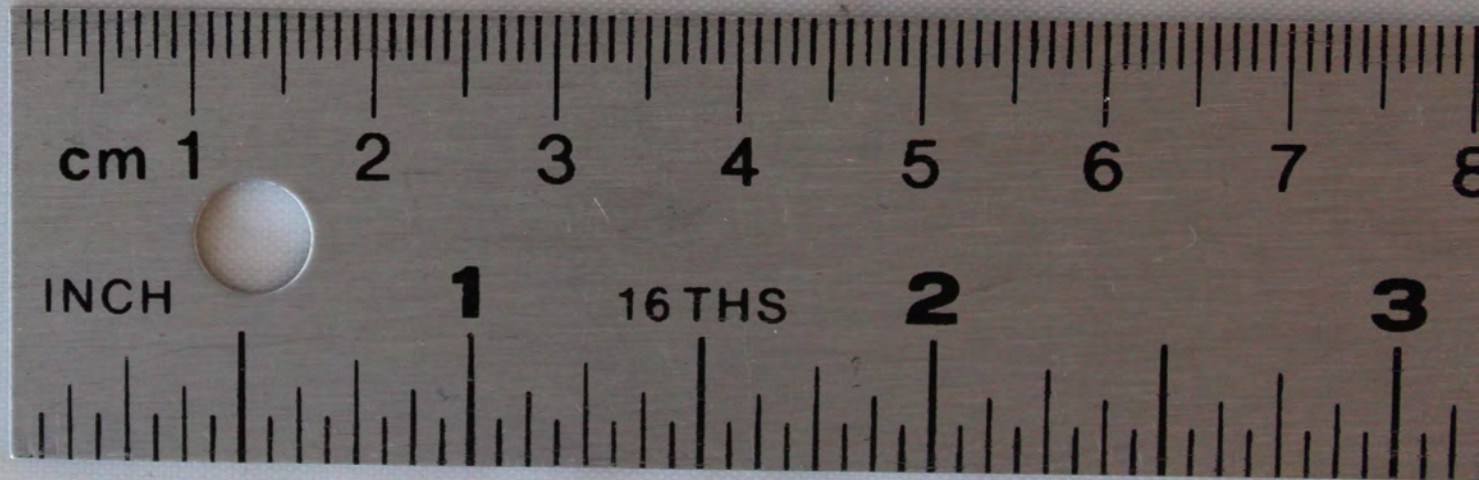
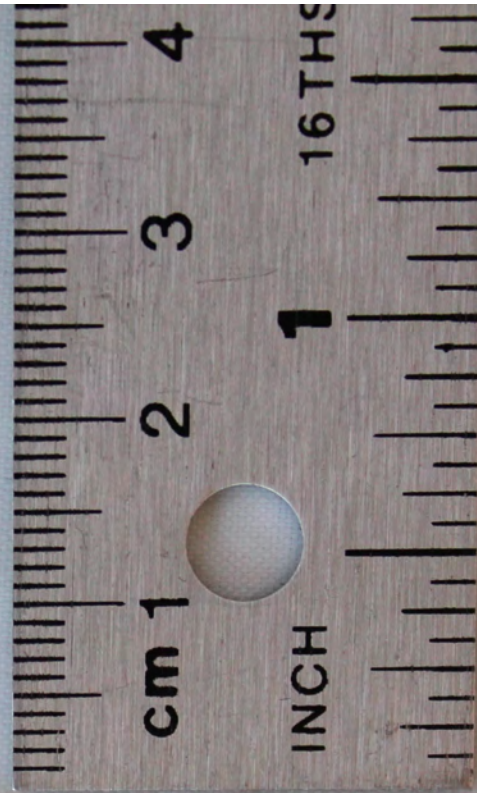
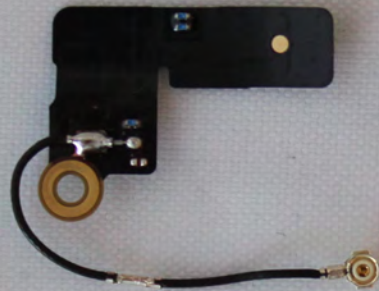
A1428

Casing without battery pack,  
SIM card tray



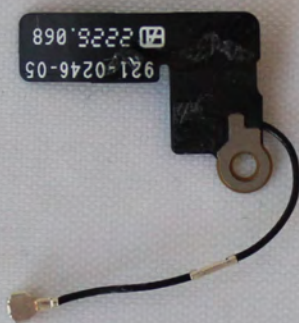
A1428

Wi-Fi/Bluetooth Antenna structure flex and feed-line - Front

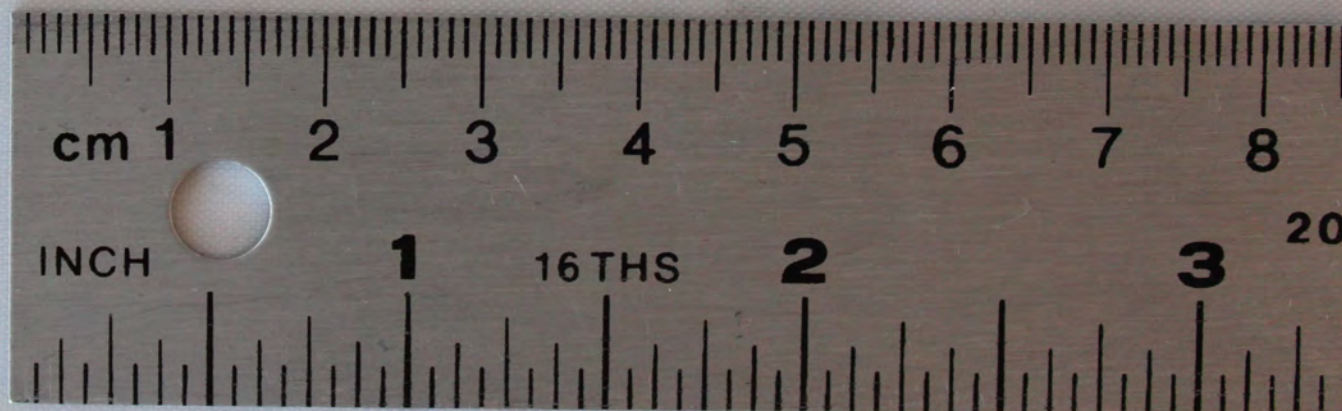


A1428

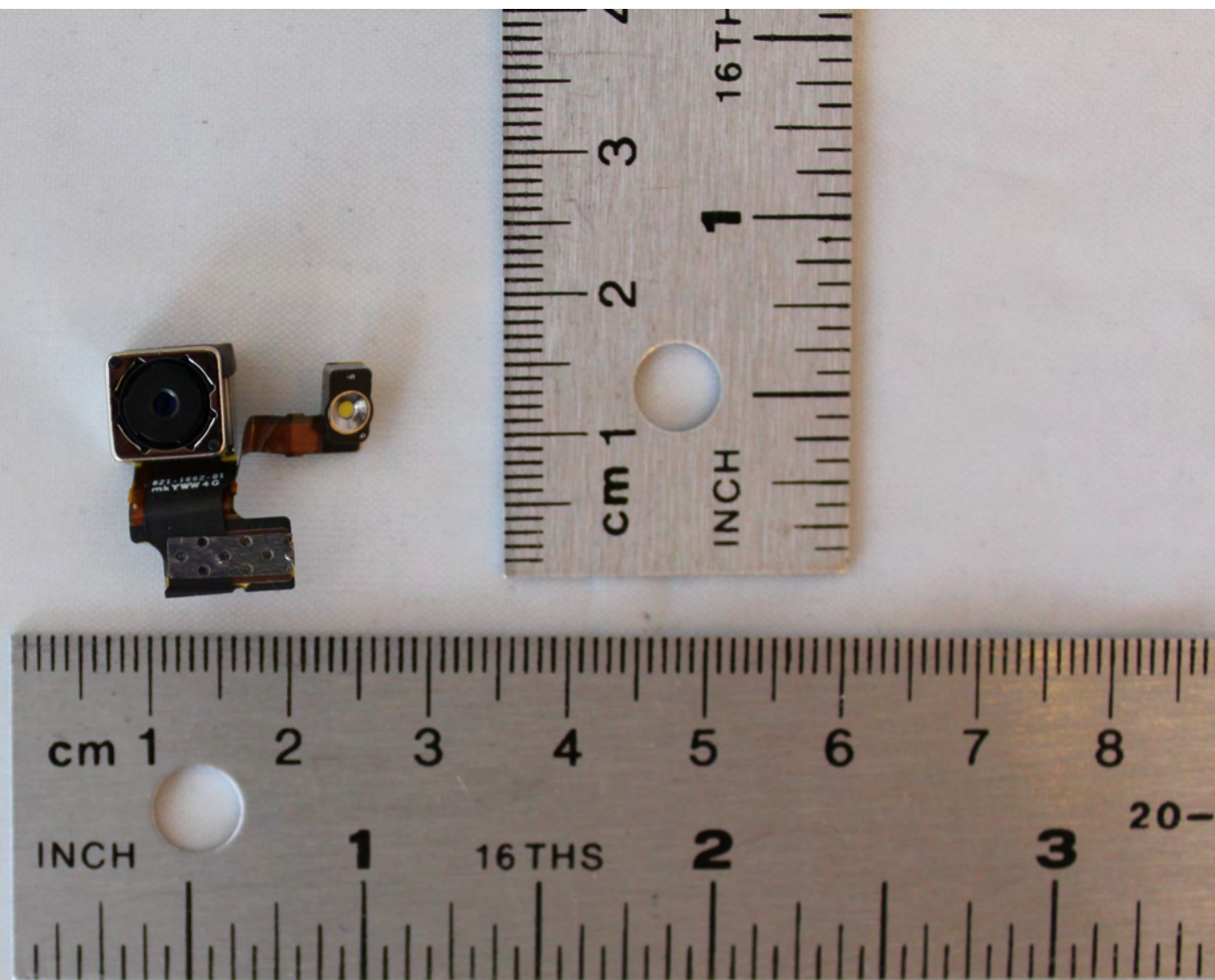
Wi-Fi/Bluetooth Antenna structure flex and feed-line - Back



921-0246-05  
2225.068

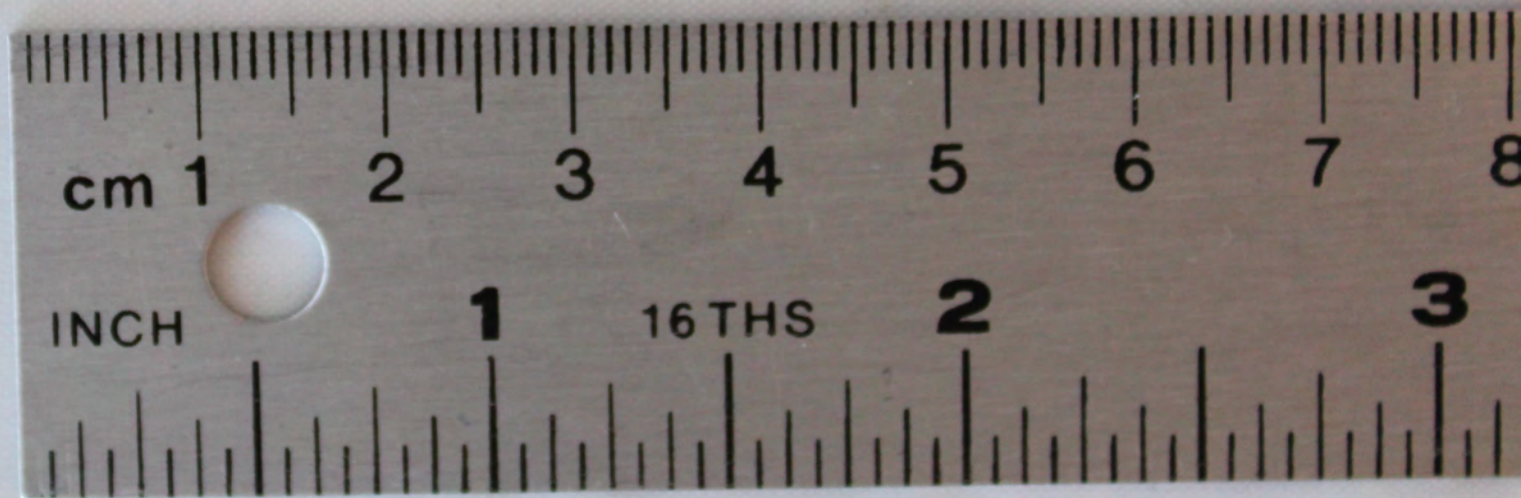
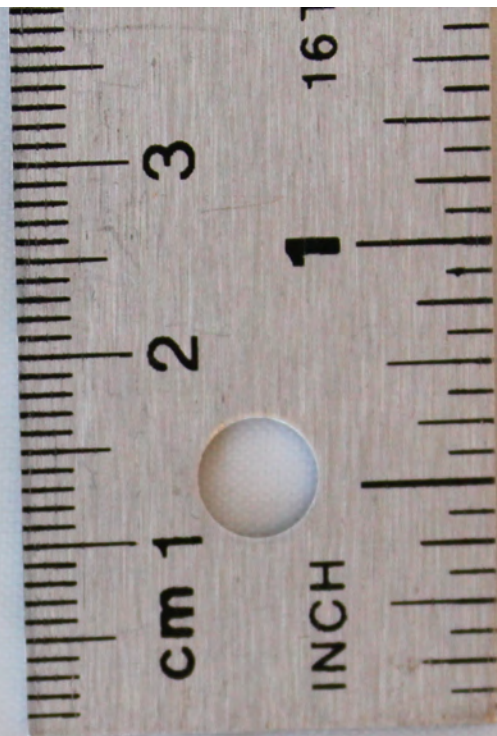
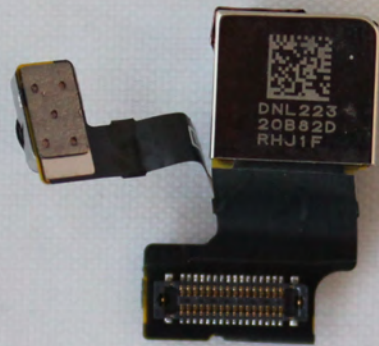


A1428  
Rear Camera, LED Flash - Front

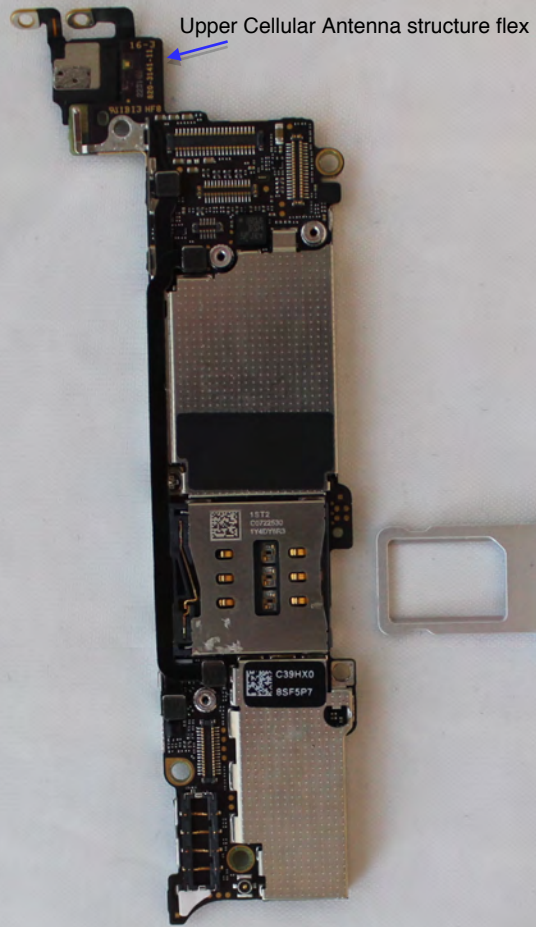




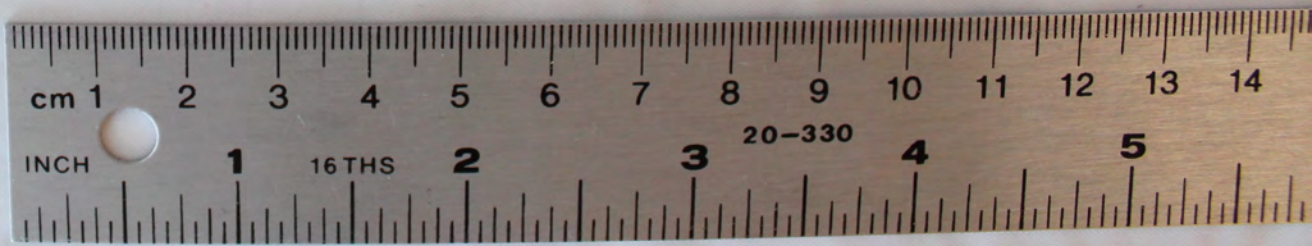
A1428  
Rear Camera, LED Flash - Back



A1428

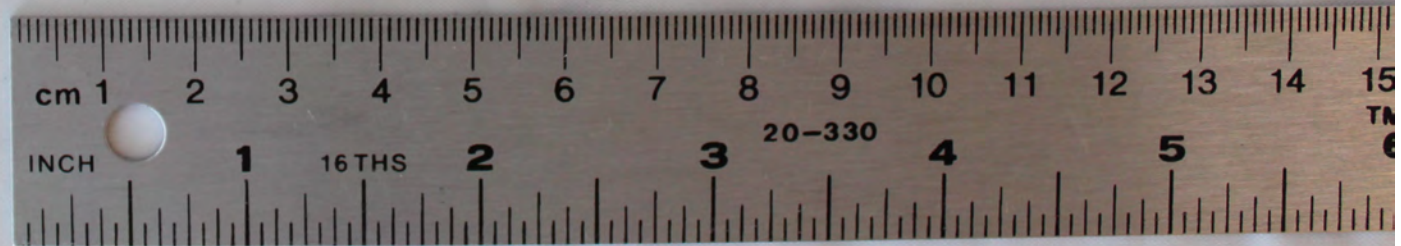


Main MLB with shields, Upper Cellular Antenna structure flex - Front  
SIM Card tray



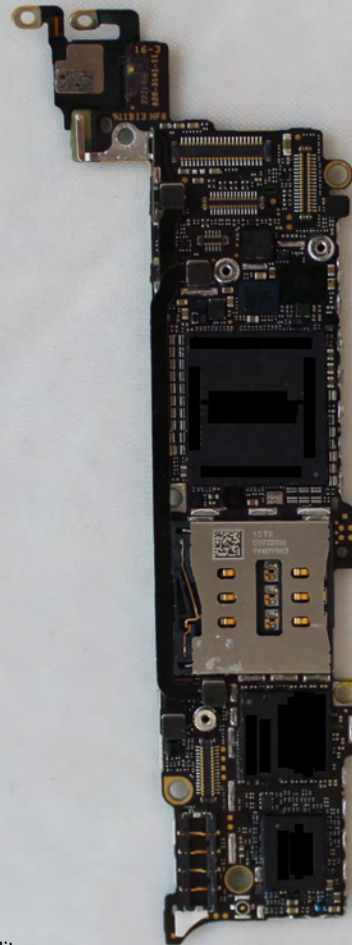
A1428  
Main MLB with shield - Back

Wi-Fi/BT Module



A1428

Main MLB without shields - Front



NOTE:  
Integrated Circuit marking was intentionally covered for confidentiality



Apple Proprietary and Confidential

Main MLB without shield - Back



NOTE:  
Integrated Circuit marking was intentionally covered for confidentiality

