



WARNING
Potential for fire or
burning. Do not
disassemble, puncture,
crush, heat, or burn.

Li-ion Polymer Battery
3.7V 5.25Whr
APN: 616-0513
VPN: LIS1445APPC
Assembled in China



Authorized Service
Provider Only



Li-ion

PHOTO 1 FCC ID: BCG-E2422B
BACK COVER REMOVED

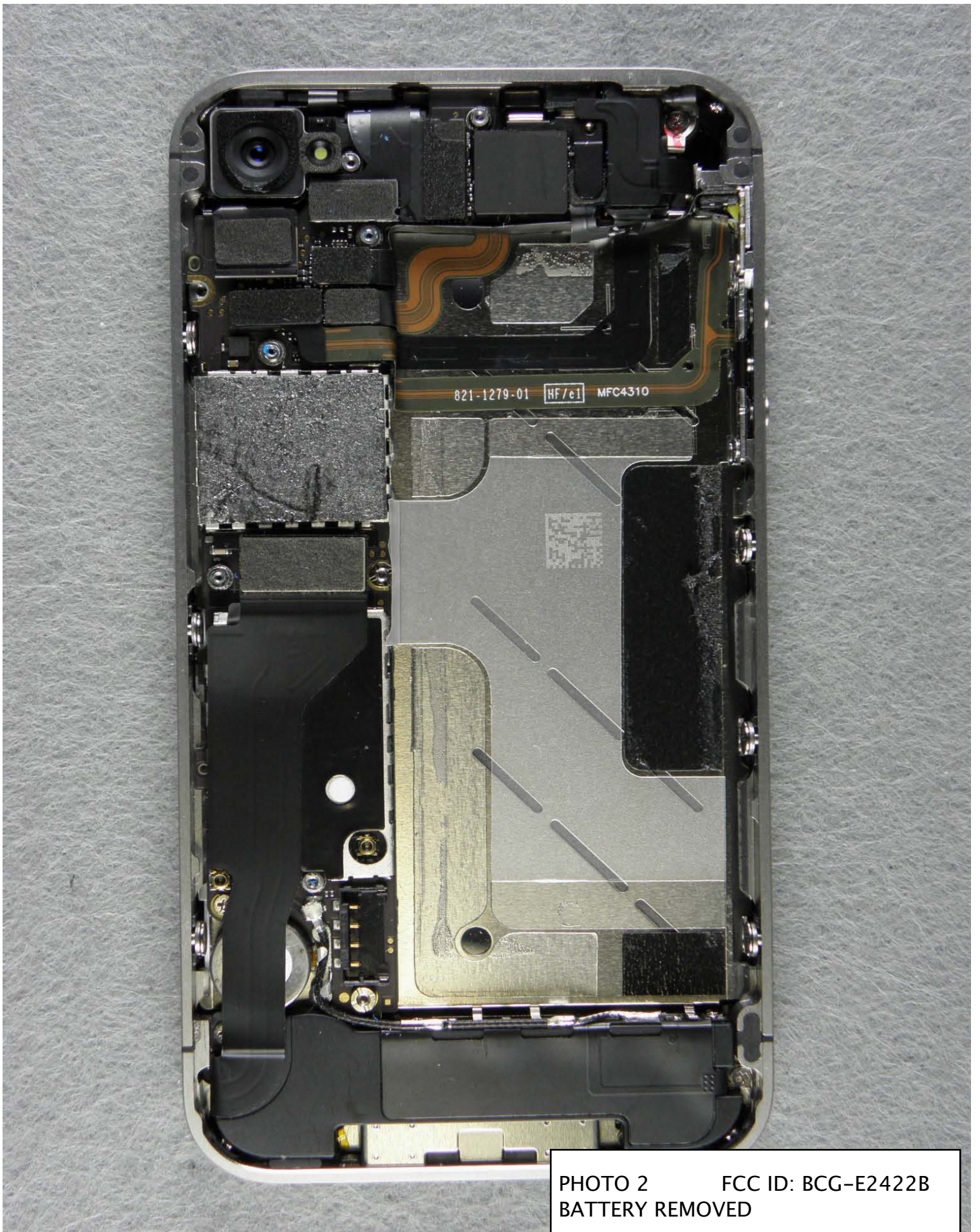


PHOTO 2 FCC ID: BCG-E2422B
BATTERY REMOVED



PHOTO 3 FCC ID: BCG-E2422B
ACOUSTIC MODULE REMOVED
TOP VIEW



PHOTO 4 FCC ID: BCG-E2422B
ACOUSTIC MODULE
BOTTOM VIEW

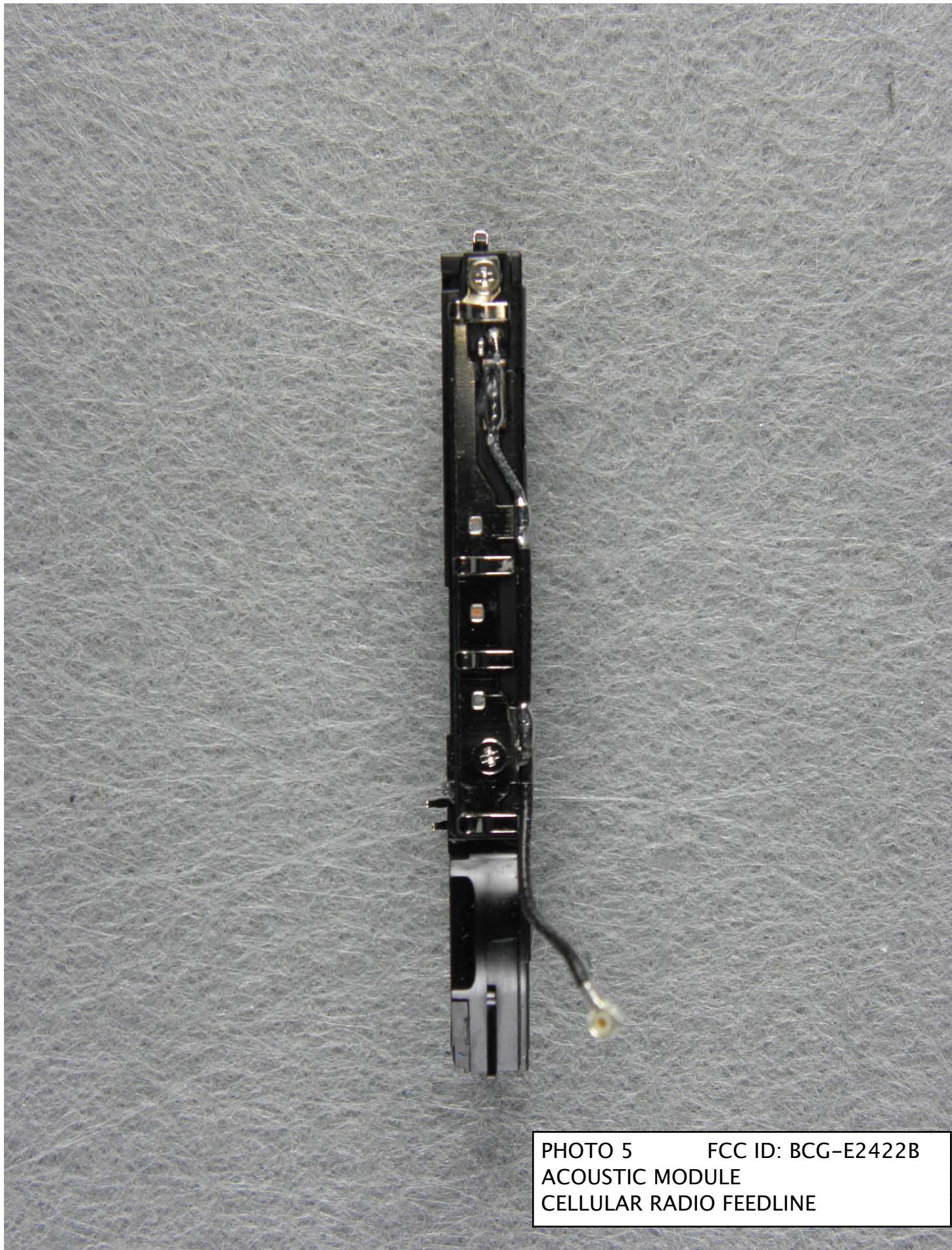


PHOTO 5 FCC ID: BCG-E2422B
ACOUSTIC MODULE
CELLULAR RADIO FEEDLINE

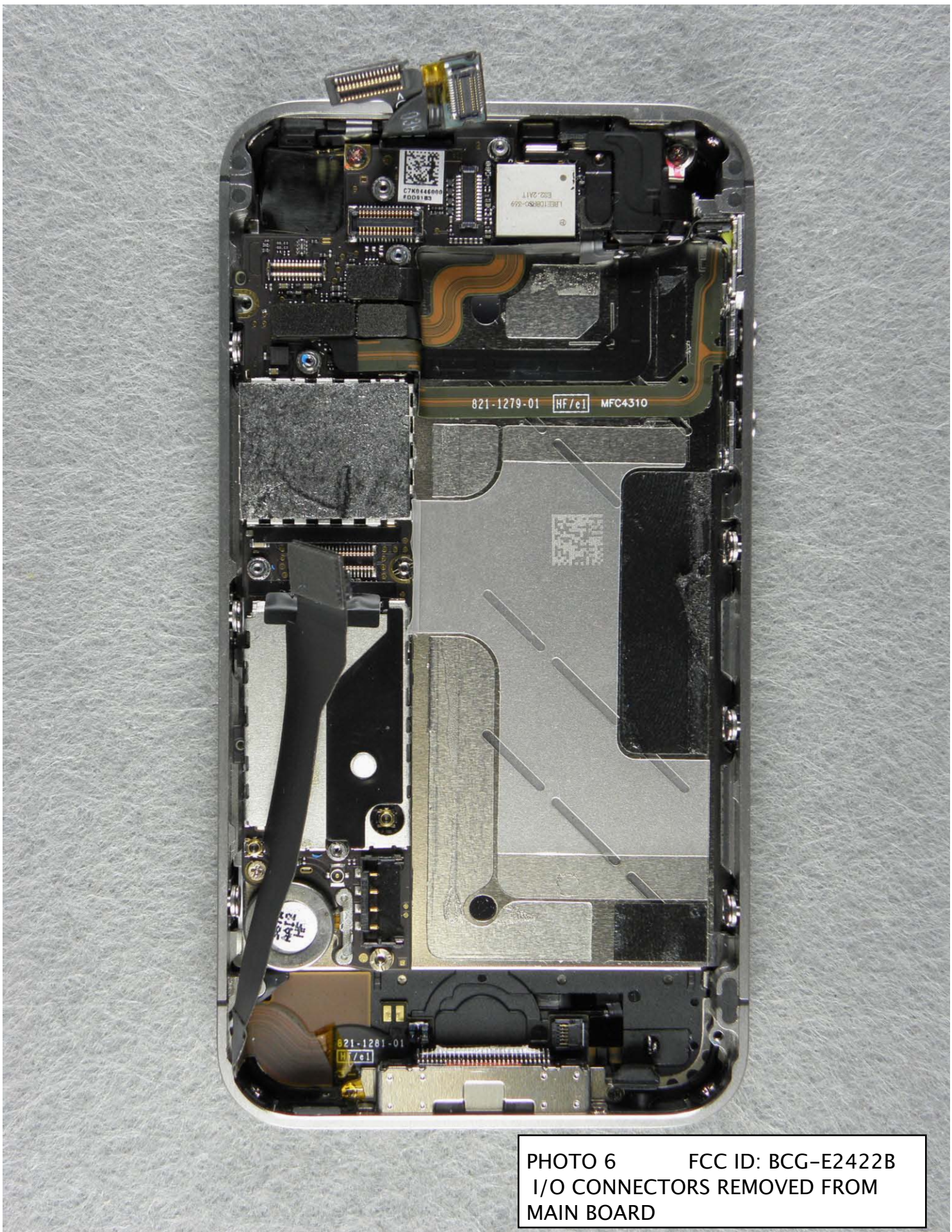


PHOTO 6 FCC ID: BCG-E2422B
I/O CONNECTORS REMOVED FROM
MAIN BOARD

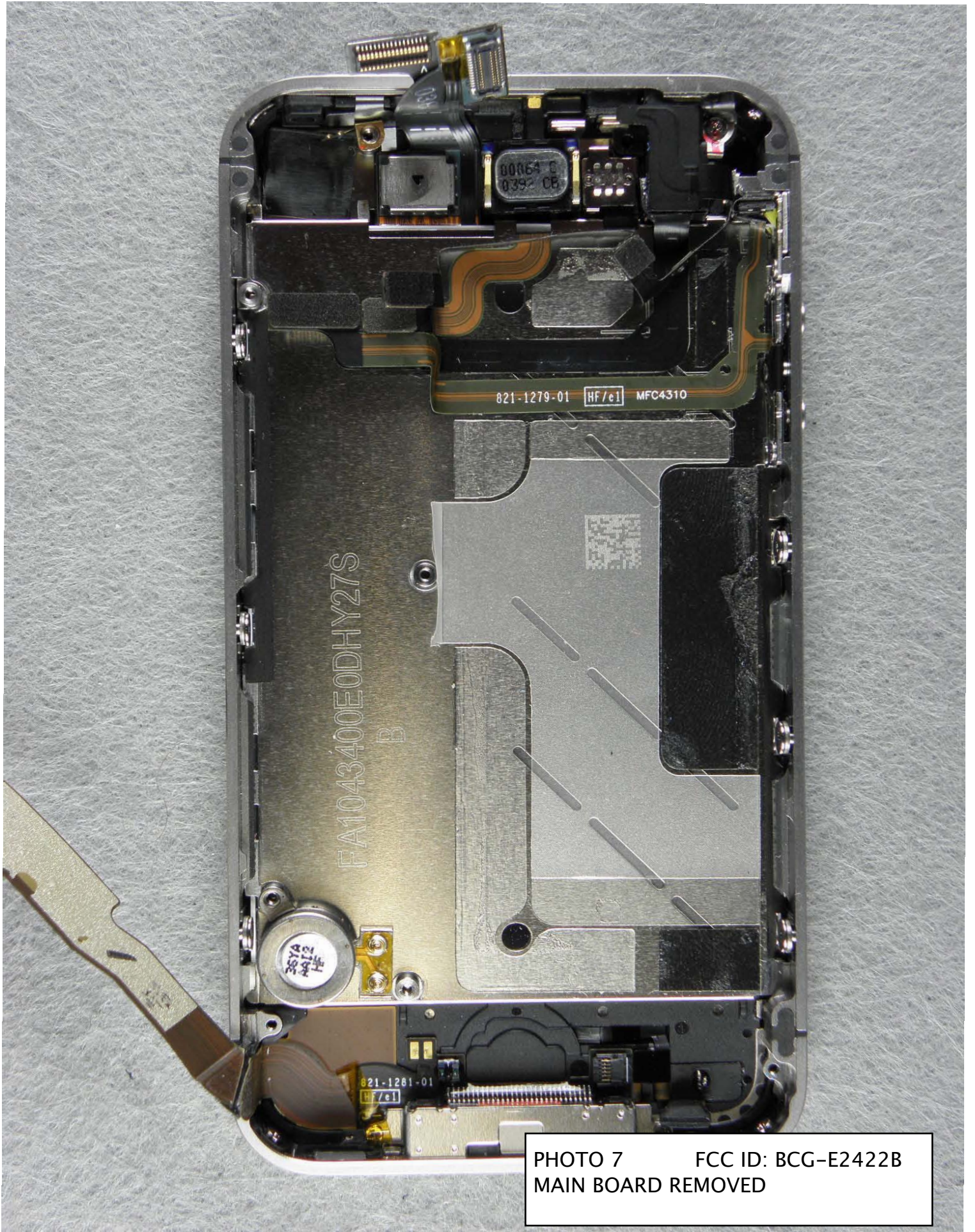


PHOTO 7 FCC ID: BCG-E2422B
MAIN BOARD REMOVED

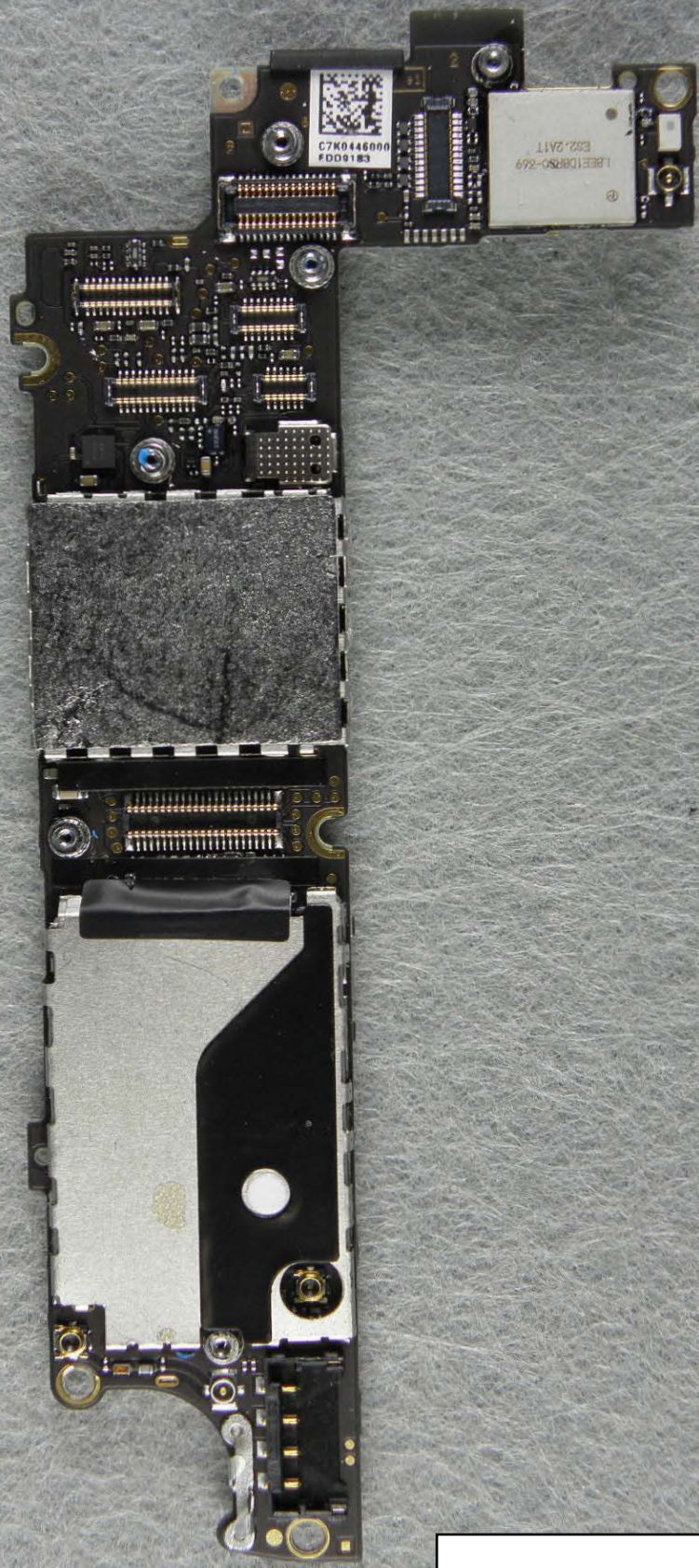


PHOTO 8 FCC ID: BCG-E2422B
MAIN BOARD TOP SIDE



PHOTO 9 FCC ID: BCG-E2422B
MAIN BOARD BOTTOM SIDE

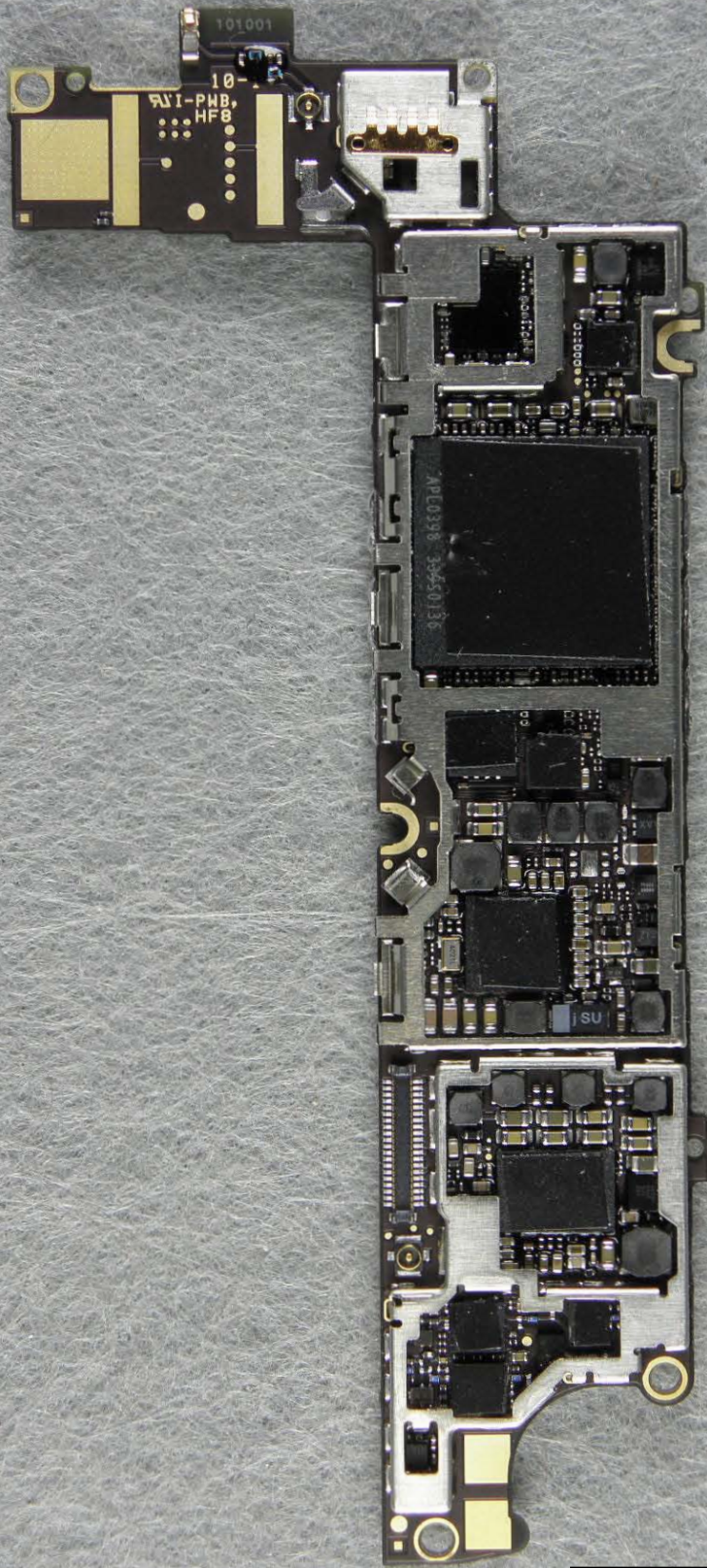


PHOTO 10 FCC ID: BCG-E2422B
MAIN BOARD BOTTOM SIDE
SHIELDS REMOVED

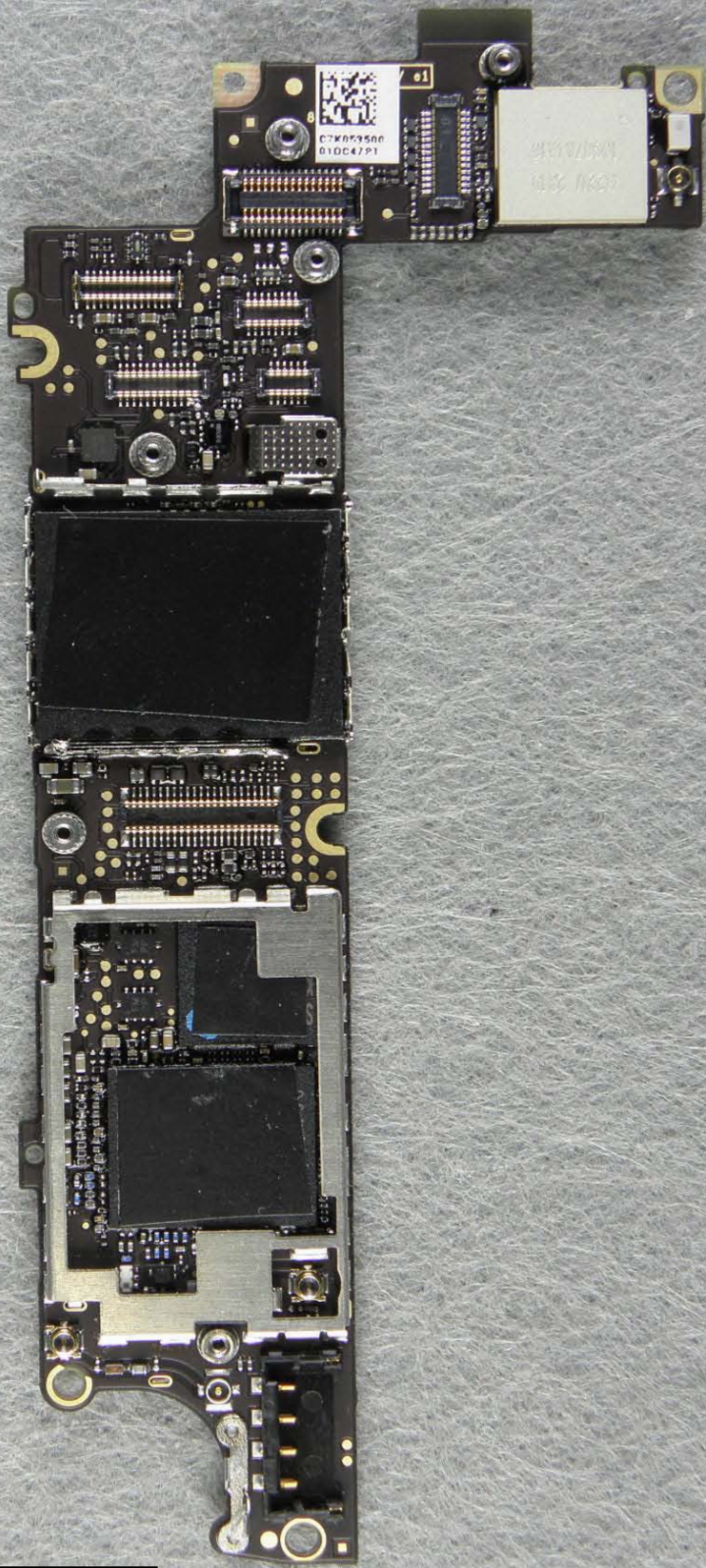


PHOTO 11 FCC ID: BCG-E2422B
MAIN BOARD TOP SIDE
SHIELDS REMOVED

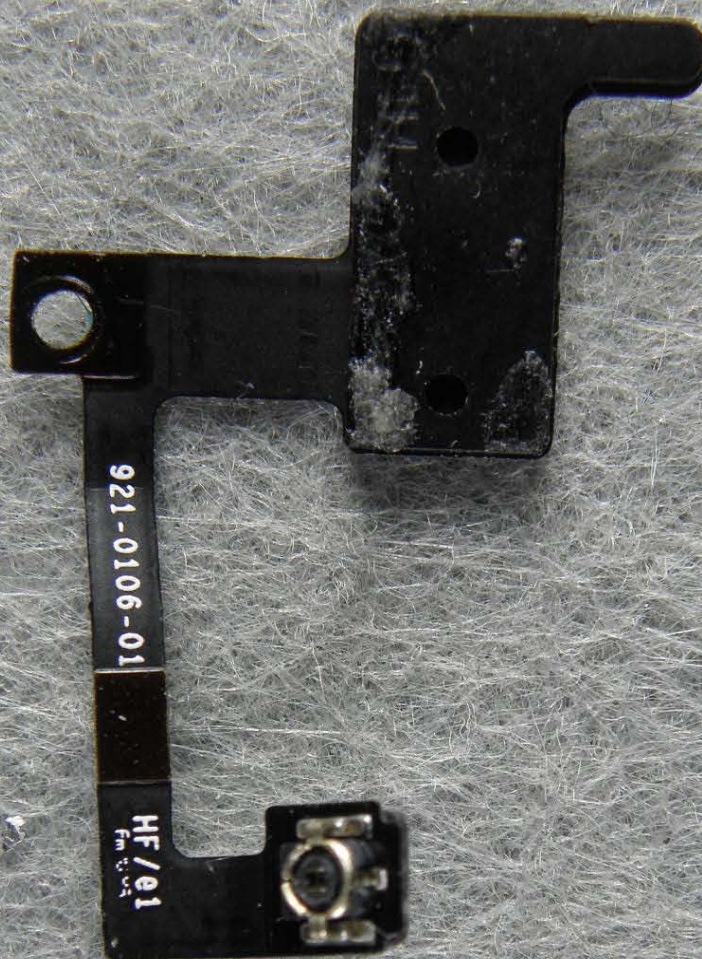


PHOTO 12 FCC ID: BCG-E2422B
WIFI / BLUETOOTH FEEDLINE
TOP SIDE



PHOTO 13 FCC ID: BCG-E2422B
WIFI / BLUETOOTH FEEDLINE
BOTTOM SIDE

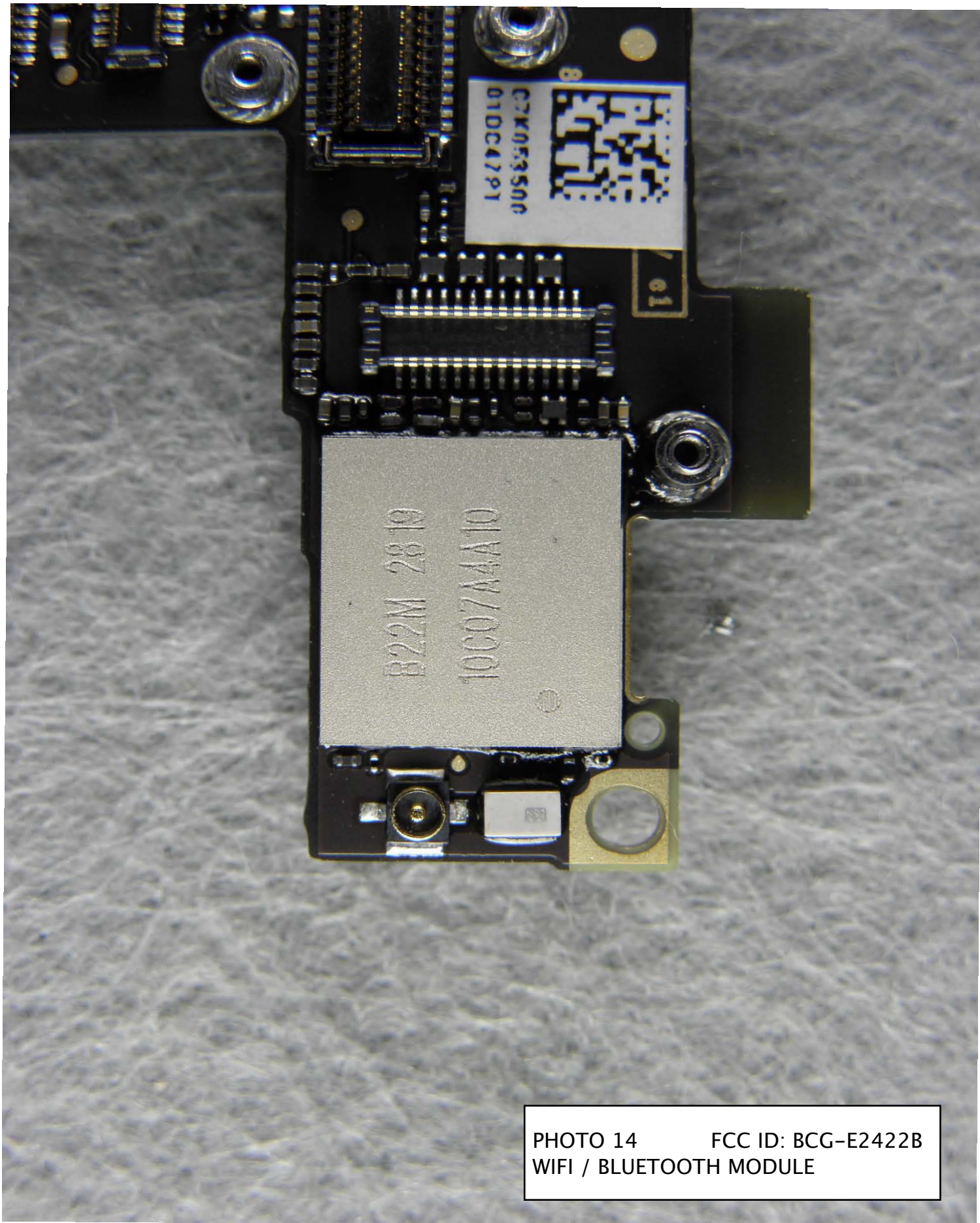


PHOTO 14 FCC ID: BCG-E2422B
WIFI / BLUETOOTH MODULE