



ELEMENT MATERIALS TECHNOLOGY

(formerly PCTEST)
18855 Adams Court, Morgan Hill, CA 95037 USA
Tel. 408.538.5600
<http://www.element.com>



RF EXPOSURE REPORT

Applicant Name:

Apple, Inc.
One Apple Park Way
Cupertino, CA 95014 USA

Date of Testing:

06/18/2025 – 07/11/2025

Test Report Issue Date:

08/12/2025

Test Site/Location:

Element, Morgan Hill, CA, USA

Document Serial No.:

1C2503270030-12.BCG-R1

FCC ID:

BCG-A3331

APPLICANT:

APPLE, INC.

DUT Type:

Watch

Application Type:

Certification

FCC Rule Part(s):

CFR §2.1093

Model:

A3331, A3450

Equipment Class	Band & Mode	Tx Frequency	SAR	
			1g Head (W/kg)	10g Extremity (W/kg)
DTS	2.4 GHz WIFI	2412 - 2472 MHz	0.42	<0.1
NII	5 GHz WIFI	U-NII-1: 5180 - 5240 MHz U-NII-2A: 5260 - 5320 MHz U-NII-2C: 5500 - 5720 MHz U-NII-3: 5745 - 5825 MHz	0.18	<0.1
DSS/DTS	2.4 GHz Bluetooth	2402 - 2480 MHz	0.28	<0.1
NII	802.15.4 ab-NB	5728.75 - 5846.25 MHz	<0.1	<0.1
DXX	NFC	13.56 MHz	N/A	<0.1
UWB	UWB	6489.6 - 7987.2 MHz	N/A	N/A
Simultaneous SAR per KDB 690783 D01v01r03:			0.35	<0.1

Note: This revised Test Report supersedes and replaces the previously issued test report on the same subject device for the same type of testing as indicated. Please discard or destroy the previously issued test report(s) and dispose of it accordingly.

This watch has been shown to be capable of compliance for localized specific absorption rate (SAR) for uncontrolled environment/general population exposure limits specified in ANSI/IEEE C95.1-1992 and has been tested in accordance with the measurement procedures specified in Section 1.8 of this report; for North American frequency bands only.

I attest to the accuracy of data. All measurements reported herein were performed by me or were made under my supervision and are correct to the best of my knowledge and belief. I assume full responsibility for the completeness of these measurements and vouch for the qualifications of all persons taking them. Test results reported herein relate only to the item(s) tested.

RJ Ortanez
Executive Vice President



The SAR Tick is an initiative of the Mobile & Wireless Forum (MWF). While a product may be considered eligible, use of the SAR Tick logo requires an agreement with the MWF. Further details can be obtained by emailing: sartick@mwfai.info.

FCC ID: BCG-A3331	RF EXPOSURE REPORT	Approved by: Technical Manager
DUT Type: Watch		Page 1 of 28

REV 24.0
03/26/2025

Unless otherwise specified, no part of this report may be reproduced or utilized in any part, form or by any means, electronic or mechanical, including photocopying and microfilm, without permission in writing from Element. If you have any questions or have an enquiry about obtaining additional rights to this report or assembly of contents thereof, please contact CT.INFO@ELEMENT.COM.

T A B L E O F C O N T E N T S

1	DEVICE UNDER TEST	3
2	INTRODUCTION	7
3	DOSIMETRIC ASSESSMENT	8
4	TEST CONFIGURATION POSITIONS.....	9
5	RF EXPOSURE LIMITS	10
6	FCC MEASUREMENT PROCEDURES.....	11
7	RF CONDUCTED POWERS.....	13
8	SYSTEM VERIFICATION.....	16
9	SAR DATA SUMMARY	20
10	SAR MEASUREMENT VARIABILITY	23
11	EQUIPMENT LIST	24
12	MEASUREMENT UNCERTAINTIES.....	25
13	CONCLUSION.....	26
14	REFERENCES	27
APPENDIX A: SAR TEST PLOTS		
APPENDIX B: SAR DIPOLE VERIFICATION PLOTS		
APPENDIX C: PROBE AND DIPOLE CALIBRATION CERTIFICATES		
APPENDIX D: SAR TISSUE SPECIFICATIONS		
APPENDIX E: MULTI-TX AND ANTENNA SAR CONSIDERATIONS		
APPENDIX F: SAR SYSTEM VALIDATION		
APPENDIX G: DUT ANTENNA DIAGRAM & SAR TEST SETUP PHOTOGRAPHS		

FCC ID: BCG-A3331	RF EXPOSURE REPORT	Approved by: Technical Manager
DUT Type: Watch		Page 2 of 28

REV 24.0
03/26/2025

Unless otherwise specified, no part of this report may be reproduced or utilized in any part, form or by any means, electronic or mechanical, including photocopying and microfilm, without permission in writing from Element. If you have any questions or have an enquiry about obtaining additional rights to this report or assembly of contents thereof, please contact CT.INFO@ELEMENT.COM.

1 DEVICE UNDER TEST

1.1 Device Overview

Band & Mode	Operating Modes	Tx Frequency
2.4 GHz WLAN	Voice/Data	2412 - 2472 MHz
5 GHz WIFI	Voice/Data	U-NII-1: 5180 - 5240 MHz U-NII-2A: 5260 - 5320 MHz U-NII-2C: 5500 - 5720 MHz U-NII-3: 5745 - 5825 MHz
Bluetooth	Data	2402 - 2480 MHz
802.15.4 ab-NB	Data	5728.75 - 5846.25 MHz
UWB	Data	6489.6 - 7987.2 MHz
NFC	Data	13.56 MHz

1.2 Power Reduction for SAR

There is no power reduction used for any band/mode implemented in this device for SAR purposes.

FCC ID: BCG-A3331	RF EXPOSURE REPORT	Approved by: Technical Manager
DUT Type: Watch		Page 3 of 28

REV 24.0
03/26/2025

Unless otherwise specified, no part of this report may be reproduced or utilized in any part, form or by any means, electronic or mechanical, including photocopying and microfilm, without permission in writing from Element. If you have any questions or have an enquiry about obtaining additional rights to this report or assembly of contents thereof, please contact CT.INFO@ELEMENT.COM.

1.3 Nominal and Maximum Output Power Specifications

This device operates using the following maximum and nominal output power specifications. SAR values were scaled to the maximum allowed power to determine compliance per KDB Publication 447498 D04v01.

1.3.1 Maximum Output Power – WiFi Mode

Mode/ Band			IEEE 802.11b (2.4 GHz)		IEEE 802.11g (2.4 GHz)		IEEE 802.11n (2.4 GHz)	
		Channel	Maximum	Nominal	Maximum	Nominal	Maximum	Nominal
Modulated Average - Single Tx Chain (dBm)	20 MHz Bandwidth	1	20.00	19.00	17.00	16.00	17.00	16.00
		2	20.00	19.00	17.50	16.50	17.50	16.50
		3	20.00	19.00	19.00	18.00	19.00	18.00
		4	20.00	19.00	19.00	18.00	19.00	18.00
		5	20.00	19.00	19.00	18.00	19.00	18.00
		6	20.00	19.00	19.00	18.00	19.00	18.00
		7	20.00	19.00	19.00	18.00	19.00	18.00
		8	20.00	19.00	19.00	18.00	19.00	18.00
		9	20.00	19.00	19.00	18.00	19.00	18.00
		10	20.00	19.00	19.00	18.00	19.00	18.00
		11	20.00	19.00	16.50	15.50	16.50	15.50
		12	20.00	19.00	15.00	14.00	15.00	14.00
		13	18.00	17.00	2.50	1.50	2.50	1.50

Mode/ Band			IEEE 802.11a (5 GHz)		IEEE 802.11n (5 GHz)	
		Channel	Maximum	Nominal	Maximum	Nominal
Modulated Average - Single Tx Chain (dBm)	20 MHz Bandwidth	36	17.00	16.00	17.00	16.00
		40	17.00	16.00	17.00	16.00
		44	17.00	16.00	17.00	16.00
		48	17.00	16.00	17.00	16.00
		52	17.00	16.00	17.00	16.00
		56	17.00	16.00	17.00	16.00
		60	17.00	16.00	17.00	16.00
		64	17.00	16.00	17.00	16.00
		100	17.00	16.00	17.00	16.00
		104	17.00	16.00	17.00	16.00
		108	17.00	16.00	17.00	16.00
		112	17.00	16.00	17.00	16.00
		116	17.00	16.00	17.00	16.00
		120	17.00	16.00	17.00	16.00
		124	17.00	16.00	17.00	16.00
		128	17.00	16.00	17.00	16.00
		132	17.00	16.00	17.00	16.00
		136	17.00	16.00	17.00	16.00
		140	13.50	12.50	13.50	12.50
		144	17.00	16.00	17.00	16.00
		149	17.00	16.00	17.00	16.00
		153	17.00	16.00	17.00	16.00
		157	17.00	16.00	17.00	16.00
		161	17.00	16.00	17.00	16.00
		165	17.00	16.00	17.00	16.00

FCC ID: BCG-A3331	RF EXPOSURE REPORT	Approved by: Technical Manager
DUT Type: Watch		Page 4 of 28

REV 24.0
03/26/2025

Unless otherwise specified, no part of this report may be reproduced or utilized in any part, form or by any means, electronic or mechanical, including photocopying and microfilm, without permission in writing from Element. If you have any questions or have an enquiry about obtaining additional rights to this report or assembly of contents thereof, please contact CT.INFO@ELEMENT.COM.

1.3.2 Maximum Output Power – Bluetooth Mode

Mode / Band		Modulated Average - Single Tx Chain (dBm)
Bluetooth BDR/LE	Maximum	18.50
	Nominal	17.50
Bluetooth EDR	Maximum	13.50
	Nominal	12.50
Bluetooth HDR	Maximum	13.50
	Nominal	12.50

1.3.3 Maximum Output Power – 802.15.4 ab-NB

Mode / Band		Modulated Average - Single Tx Chain (dBm)
802.15.4 ab-NB	Maximum	16.00
	Nominal	14.00

1.4 DUT Antenna Locations

A diagram showing the location of the device antennas can be found in the DUT Antenna Diagram & SAR Test Setup Photographs Appendix.

1.5 Near Field Communications (NFC) Antenna

This DUT has NFC operations. The NFC antenna is integrated into the device for this model. Therefore, all SAR tests were performed with the device which already incorporates the NFC antenna. A diagram showing the location of the NFC antenna can be found in the DUT Antenna Diagram & SAR Test Setup Photographs Appendix.

1.6 Simultaneous Transmission Capabilities

According to FCC KDB Publication 447498 D04v01, transmitters are considered to be operating simultaneously when there is overlapping transmission, with the exception of transmissions during network hand-offs with maximum hand-off duration less than 30 seconds.

This device contains multiple transmitters that may operate simultaneously, and therefore requires a simultaneous transmission analysis according to FCC KDB Publication 447498 D04v01 4.3.2 procedures.

FCC ID: BCG-A3331	RF EXPOSURE REPORT	Approved by: Technical Manager
DUT Type: Watch		Page 5 of 28

REV 24.0
03/26/2025

Unless otherwise specified, no part of this report may be reproduced or utilized in any part, form or by any means, electronic or mechanical, including photocopying and microfilm, without permission in writing from Element. If you have any questions or have an enquiry about obtaining additional rights to this report or assembly of contents thereof, please contact CT.INFO@ELEMENT.COM.

Table 1-1
Simultaneous Transmission Scenarios

No.	Capable Transmit Configuration	Head	Extremity
1	2.4 GHz WI-FI + 802.15.4 ab-NB + NFC*	Yes*	Yes
2	2.4 GHz WI-FI + UWB + NFC*	Yes*	Yes
3	2.4 GHz Bluetooth + 5 GHz WI-FI + NFC*	Yes*	Yes
4	2.4 GHz Bluetooth + 802.15.4 ab-NB + NFC*	Yes*	Yes
5	2.4 GHz Bluetooth + UWB + NFC*	Yes*	Yes

1. 2.4 GHz WLAN and 2.4 GHz Bluetooth share the same antenna path and cannot transmit simultaneously.
2. 2.4 GHz WLAN and 5 GHz WLAN share the same antenna path and cannot transmit simultaneously.
3. 802.15.4ab-NB and 5 GHz WLAN share the same antenna path and cannot transmit simultaneously.
4. This device supports VOWIFI.
5. *NFC was evaluated for extremity only based on expected usage conditions.

1.7 Miscellaneous SAR Test Considerations

(A) WIFI/BT

This device supports channel 1-13 for 2.4 GHz WLAN. However, because channel 12/13 targets are not higher than that of channels 1-11, channels 1, 6, and 11 were considered for SAR testing per FCC KDB 248227 D01V02r02.

Since U-NII-1 and U-NII-2A bands have the same maximum output power and the highest reported SAR for U-NII-2A is less than 1.2 W/kg, SAR is not required for U-NII-1 band according to FCC KDB Publication 248227 D01v02r02.

Per October 2022 TCB Workshop, the 1 mW test exemption is allowed for 6-8.5 GHz UWB in multi-transmitter end products. No further evaluation for UWB is required.

1.8 Guidance Applied

- FCC KDB Publication 248227 D01v02r02 (SAR Considerations for 802.11 Devices)
- FCC KDB Publication 447498 D04v01 (General SAR Guidance, Wrist-worn Device Guidance)
- FCC KDB Publication 865664 D01v01r04, D02v01r02 (SAR Measurements up to 6 GHz)
- IEEE 1528-2013
- November 2017, October 2018, April 2019, November 2019, October 2020 TCBC Workshop Notes
- SPEAG DASY6 System Handbook

1.9 Device Serial Numbers

Several samples with identical hardware were used to support SAR testing. The manufacturer has confirmed that the device(s) tested have the same physical, mechanical, and thermal characteristics and are within operational tolerances expected for production units. The serial numbers used for each test are indicated alongside the results in Section 9.

1.10 Device Housing Types and Wrist Band Types

This device has one housing type that was evaluated independently for SAR: Aluminum. The device can also be used with different wristband accessories. The non-metallic wrist accessory, sport band, was evaluated for all exposure conditions. The available metallic wrist accessories, metal links band and metal loop band, were additionally evaluated.

FCC ID: BCG-A3331	RF EXPOSURE REPORT	Approved by: Technical Manager
DUT Type: Watch		Page 6 of 28

REV 24.0
03/26/2025

Unless otherwise specified, no part of this report may be reproduced or utilized in any part, form or by any means, electronic or mechanical, including photocopying and microfilm, without permission in writing from Element. If you have any questions or have an enquiry about obtaining additional rights to this report or assembly of contents thereof, please contact CT.INFO@ELEMENT.COM.

2 INTRODUCTION

The FCC and Innovation, Science, and Economic Development Canada have adopted the guidelines for evaluating the environmental effects of radio frequency (RF) radiation in ET Docket 93-62 on Aug. 6, 1996, and Health Canada Safety Code 6 to protect the public and workers from the potential hazards of RF emissions due to FCC-regulated portable devices. [1]

The safety limits used for the environmental evaluation measurements are based on the criteria published by the American National Standards Institute (ANSI) for localized specific absorption rate (SAR) in IEEE/ANSI C95.1-1992 Standard for Safety Levels with Respect to Human Exposure to Radio Frequency Electromagnetic Fields, 3 kHz to 300 GHz [3] and Health Canada RF Exposure Guidelines Safety Code 6 [22]. The measurement procedure described in IEEE/ANSI C95.3-2002 Recommended Practice for the Measurement of Potentially Hazardous Electromagnetic Fields - RF and Microwave [4] is used for guidance in measuring the Specific Absorption Rate (SAR) due to the RF radiation exposure from the Equipment Under Test (EUT). These criteria for SAR evaluation are similar to those recommended by the International Committee for Non-Ionizing Radiation Protection (ICNIRP) in Biological Effects and Exposure Criteria for Radiofrequency Electromagnetic Fields,” Report No. Vol 74. SAR is a measure of the rate of energy absorption due to exposure to an RF transmitting source. SAR values have been related to threshold levels for potential biological hazards.

2.1 SAR Definition

Specific Absorption Rate is defined as the time derivative (rate) of the incremental energy (dU) absorbed by (dissipated in) an incremental mass (dm) contained in a volume element (dV) of a given density (ρ). It is also defined as the rate of RF energy absorption per unit mass at a point in an absorbing body (see Equation 2-1).

Equation 2-1
SAR Mathematical Equation

$$SAR = \frac{d}{dt} \left(\frac{dU}{dm} \right) = \frac{d}{dt} \left(\frac{dU}{\rho dv} \right)$$

SAR is expressed in units of Watts per Kilogram (W/kg).

$$SAR = \frac{\sigma \cdot E^2}{\rho}$$

where:

- σ = conductivity of the tissue-simulating material (S/m)
- ρ = mass density of the tissue-simulating material (kg/m³)
- E = Total RMS electric field strength (V/m)

NOTE: The primary factors that control rate of energy absorption were found to be the wavelength of the incident field in relation to the dimensions and geometry of the irradiated organism, the orientation of the organism in relation to the polarity of field vectors, the presence of reflecting surfaces, and whether conductive contact is made by the organism with a ground plane.[6]

FCC ID: BCG-A3331	RF EXPOSURE REPORT	Approved by: Technical Manager
DUT Type: Watch		Page 7 of 28

REV 24.0
03/26/2025

Unless otherwise specified, no part of this report may be reproduced or utilized in any part, form or by any means, electronic or mechanical, including photocopying and microfilm, without permission in writing from Element. If you have any questions or have an enquiry about obtaining additional rights to this report or assembly of contents thereof, please contact CT.INFO@ELEMENT.COM.

3 DOSIMETRIC ASSESSMENT

3.1 Measurement Procedure

The evaluation was performed using the following procedure compliant to FCC KDB Publication 865664 D01v01r04 and:

1. The SAR distribution at the exposed side of the head or body was measured at a distance no greater than 5.0 mm from the inner surface of the shell. The area covered the entire dimension of the device-head and body interface, and the horizontal grid resolution was determined per FCC KDB Publication 865664 D01v01r04 (See Table 3-1).
2. The point SAR measurement was taken at the maximum SAR region determined from Step 1 to enable the monitoring of SAR fluctuations/drifts during the 1g/10g cube evaluation. SAR at this fixed point was measured and used as a reference value.
3. Based on the area scan data, the peak of the region with maximum SAR was determined by spline interpolation. Around this point, a volume was assessed according to the measurement resolution and volume size requirements of FCC KDB Publication 865664 D01v01r04 (See Table 3-1). On the basis of this data set, the spatial peak SAR value was evaluated with the following procedure (see references or the DASY manual online for more details):
 - a. SAR values at the inner surface of the phantom are extrapolated from the measured values along the line away from the surface with spacing no greater than that in Table 3-1. The extrapolation was based on a least-squares algorithm. A polynomial of the fourth order was calculated through the points in the z-axis (normal to the phantom shell).
 - b. After the maximum interpolated values were calculated between the points in the cube, the SAR was averaged over the spatial volume (1g or 10g) using a 3D-Spline interpolation algorithm. The 3D-spline is composed of three one-dimensional splines with the “Not a knot” condition (in x, y, and z directions). The volume was then integrated with the trapezoidal algorithm. One thousand points (10 x 10 x 10) were obtained through interpolation, in order to calculate the averaged SAR.
 - c. All neighboring volumes were evaluated until no neighboring volume with a higher average value was found.
4. The SAR reference value, at the same location as step 2, was re-measured after the zoom scan was complete to calculate the SAR drift. If the drift deviated by more than 5%, the SAR test and drift measurements were repeated.

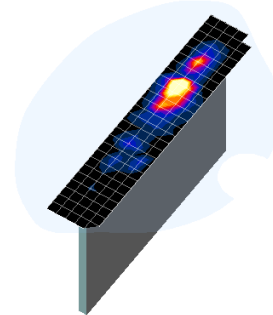


Figure 3-1
Sample SAR Area Scan

Table 3-1
Area and Zoom Scan Resolutions per FCC KDB Publication 865664 D01v01r04*

Frequency	Maximum Area Scan Resolution (mm) ($\Delta x_{area}, \Delta y_{area}$)	Maximum Zoom Scan Resolution (mm) ($\Delta x_{zoomTV}, \Delta y_{zoomTV}$)	Maximum Zoom Scan Spatial Resolution (mm)			Minimum Zoom Scan Volume (mm) (x,y,z)
			Uniform Grid	Graded Grid		
				$\Delta z_{zoom}(n)$	$\Delta z_{zoom}(1)^*$	
≤ 2 GHz	≤ 15	≤ 8	≤ 5	≤ 4	≤ 1.5* $\Delta z_{zoom}(n-1)$	≥ 30
2-3 GHz	≤ 12	≤ 5	≤ 5	≤ 4	≤ 1.5* $\Delta z_{zoom}(n-1)$	≥ 30
3-4 GHz	≤ 12	≤ 5	≤ 4	≤ 3	≤ 1.5* $\Delta z_{zoom}(n-1)$	≥ 28
4-5 GHz	≤ 10	≤ 4	≤ 3	≤ 2.5	≤ 1.5* $\Delta z_{zoom}(n-1)$	≥ 25
5-6 GHz	≤ 10	≤ 4	≤ 2	≤ 2	≤ 1.5* $\Delta z_{zoom}(n-1)$	≥ 22

*Also compliant to IEEE 1528-2013 Table 6

FCC ID: BCG-A3331	RF EXPOSURE REPORT	Approved by: Technical Manager
DUT Type: Watch		Page 8 of 28

REV 24.0
03/26/2025

Unless otherwise specified, no part of this report may be reproduced or utilized in any part, form or by any means, electronic or mechanical, including photocopying and microfilm, without permission in writing from Element. If you have any questions or have an enquiry about obtaining additional rights to this report or assembly of contents thereof, please contact CT.INFO@ELEMENT.COM.

4 TEST CONFIGURATION POSITIONS

4.1 Device Holder

The device holder is made out of low-loss POM material having the following dielectric parameters: relative permittivity $\epsilon = 3$ and loss tangent $\delta = 0.02$. Additionally, a manufacturer provided low-loss foam was used to position the device for head SAR evaluations.

4.2 Positioning for Head

Devices that are designed to be worn on the wrist may operate in speaker mode for voice communication, with the device worn on the wrist and positioned next to the mouth. When next-to-mouth SAR evaluation is required, the device is positioned at 10 mm from a flat phantom filled with head tissue-equivalent medium. The device is evaluated with wrist bands strapped together to represent normal use conditions.

4.3 Extremity Exposure Configurations

Devices that are designed or intended for use on extremities or mainly operated in extremity only exposure conditions: i.e., hands, wrists, feet, and ankles, may require extremity SAR evaluation. When the device also operates in close proximity to the user's body, SAR compliance for the body is also required. When extremity SAR evaluation is required, the device is evaluated with the back of the device touching the flat phantom, which is filled with head tissue-equivalent medium. The device was evaluated with Sport wristband unstrapped and touching the phantom. For Metal Loop and Metal Links wristbands, the device was evaluated with wristbands strapped and the distance between wristbands and the phantom was minimized to represent the spacing created by actual use conditions.

FCC ID: BCG-A3331	RF EXPOSURE REPORT	Approved by: Technical Manager
DUT Type: Watch		Page 9 of 28

REV 24.0
03/26/2025

Unless otherwise specified, no part of this report may be reproduced or utilized in any part, form or by any means, electronic or mechanical, including photocopying and microfilm, without permission in writing from Element. If you have any questions or have an enquiry about obtaining additional rights to this report or assembly of contents thereof, please contact CT.INFO@ELEMENT.COM.

5 RF EXPOSURE LIMITS

5.1 Uncontrolled Environment

UNCONTROLLED ENVIRONMENTS are defined as locations where there is the exposure of individuals who have no knowledge or control of their exposure. The general population/uncontrolled exposure limits are applicable to situations in which the general public may be exposed or in which persons who are exposed as a consequence of their employment may not be made fully aware of the potential for exposure or cannot exercise control over their exposure. Members of the general public would come under this category when exposure is not employment-related; for example, in the case of a wireless transmitter that exposes persons in its vicinity.

5.2 Controlled Environment

CONTROLLED ENVIRONMENTS are defined as locations where there is exposure that may be incurred by persons who are aware of the potential for exposure, (i.e., as a result of employment or occupation). In general, occupational/controlled exposure limits are applicable to situations in which persons are exposed as a consequence of their employment, who have been made fully aware of the potential for exposure and can exercise control over their exposure. This exposure category is also applicable when the exposure is of a transient nature due to incidental passage through a location where the exposure levels may be higher than the general population/uncontrolled limits, but the exposed person is fully aware of the potential for exposure and can exercise control over his or her exposure by leaving the area or by some other appropriate means.

5.3 RF Exposure Limits for Frequencies Below 6 GHz

Table 5-1
SAR Human Exposure Specified in ANSI/IEEE C95.1-1992 and Health Canada Safety Code 6

HUMAN EXPOSURE LIMITS		
	UNCONTROLLED ENVIRONMENT <i>General Population</i> (W/kg) or (mW/g)	CONTROLLED ENVIRONMENT <i>Occupational</i> (W/kg) or (mW/g)
Peak Spatial Average SAR Head	1.6	8.0
Whole Body SAR	0.08	0.4
Peak Spatial Average SAR Hands, Feet, Ankle, Wrists, etc.	4.0	20

1. The Spatial Peak value of the SAR averaged over any 1 gram of tissue (defined as a tissue volume in the shape of a cube) and over the appropriate averaging time.
2. The Spatial Average value of the SAR averaged over the whole body.
3. The Spatial Peak value of the SAR averaged over any 10 grams of tissue (defined as a tissue volume in the shape of a cube) and over the appropriate averaging time.

FCC ID: BCG-A3331	RF EXPOSURE REPORT	Approved by: Technical Manager
DUT Type: Watch		Page 10 of 28

REV 24.0
03/26/2025

Unless otherwise specified, no part of this report may be reproduced or utilized in any part, form or by any means, electronic or mechanical, including photocopying and microfilm, without permission in writing from Element. If you have any questions or have an enquiry about obtaining additional rights to this report or assembly of contents thereof, please contact CT.INFO@ELEMENT.COM.

6 FCC MEASUREMENT PROCEDURES

6.1 Measured and Reported SAR

Per FCC KDB Publication 447498 D04v01, when SAR is not measured at the maximum power level allowed for production units, the results must be scaled to the maximum tune-up tolerance limit according to the power applied to the individual channels tested to determine compliance. For simultaneous transmission, the measured aggregate SAR must be scaled according to the sum of the differences between the maximum tune-up tolerance and actual power used to test each transmitter. When SAR is measured at or scaled to the maximum tune-up tolerance limit, the results are referred to as *reported* SAR. The highest *reported* SAR results are identified on the grant of equipment authorization according to procedures in KDB 690783 D01v01r03.

6.2 SAR Testing with 802.11 Transmitters

The normal network operating configurations of 802.11 transmitters are not suitable for SAR measurements. Unpredictable fluctuations in network traffic and antenna diversity conditions can introduce undesirable variations in SAR results. The SAR for these devices should be measured using chipset-based test mode software to ensure the results are consistent and reliable. See KDB Publication 248227 D01v02r02 for more details.

6.2.1 General Device Setup

Chipset based test mode software is hardware dependent and generally varies among manufacturers. The device operating parameters established in test mode for SAR measurements must be identical to those programmed in production units, including output power levels, amplifier gain settings and other RF performance tuning parameters.

A periodic duty factor is required for current generation SAR systems to measure SAR. When 802.11 frame gaps are accounted for in the transmission, a maximum transmission duty factor of 92 - 96% is typically achievable in most test mode configurations. A minimum transmission duty factor of 85% is required to avoid certain hardware and device implementation issues related to wide range SAR scaling. The reported SAR is scaled to 100% transmission duty factor to determine compliance at the maximum tune-up tolerance limit.

6.2.2 U-NII-1 and U-NII-2A

For devices that operate in both U-NII-1 and U-NII-2A bands, when the same maximum output power is specified for both bands, SAR measurement using OFDM SAR test procedures is not required for U-NII-1 unless the highest reported SAR for U-NII-2A is > 1.2 W/kg. When different maximum output powers are specified for the bands, SAR measurement for the U-NII band with the lower maximum output power is not required unless the highest reported SAR for the U-NII band with the higher maximum output power, adjusted by the ratio of lower to higher specified maximum output power for the two bands, is > 1.2 W/kg. When 10g SAR measurement is considered, a factor of 2.5 is applied to the thresholds above.

6.2.3 U-NII-2C and U-NII-3

The frequency range covered by U-NII-2C and U-NII-3 is 380 MHz (5.47 – 5.85 GHz), which requires a minimum of at least two SAR probe calibration frequency points to support SAR measurements. When Terminal Doppler Weather Radar (TDWR) restriction applies, the channels at 5.60 – 5.65 GHz in U-NII-2C band must be disabled with acceptable mechanisms and documented in the equipment certification. Unless band gap channels are permanently disabled, SAR must be considered for these channels. Each band is tested independently according to the normally required OFDM SAR measurement and probe calibration frequency points requirements.

FCC ID: BCG-A3331	RF EXPOSURE REPORT	Approved by: Technical Manager
DUT Type: Watch		Page 11 of 28

REV 24.0
03/26/2025

Unless otherwise specified, no part of this report may be reproduced or utilized in any part, form or by any means, electronic or mechanical, including photocopying and microfilm, without permission in writing from Element. If you have any questions or have an enquiry about obtaining additional rights to this report or assembly of contents thereof, please contact CT.INFO@ELEMENT.COM.

6.2.4 2.4 GHz SAR Test Requirements

SAR is measured for 2.4 GHz 802.11b DSSS using either the fixed test position or, when applicable, the initial test position procedure. SAR test reduction is determined according to the following:

- 1) When the reported SAR of the highest measured maximum output power channel for the exposure configuration is ≤ 0.8 W/kg, no further SAR testing is required for 802.11b DSSS in that exposure configuration.
- 2) When the reported SAR is > 0.8 W/kg, SAR is required for that position using the next highest measured output power channel. When any reported SAR is > 1.2 W/kg, SAR is required for the third channel, i.e., all channels require testing.

2.4 GHz 802.11 g/n OFDM are additionally evaluated for SAR if the highest reported SAR for 802.11b, adjusted by the ratio of the OFDM to DSSS specified maximum output power, is > 1.2 W/kg. When SAR is required for OFDM modes in 2.4 GHz band, the Initial Test Configuration Procedures should be followed. When 10g SAR measurement is considered, a factor of 2.5 is applied to the thresholds above.

6.2.5 OFDM Transmission Mode and SAR Test Channel Selection

When the same maximum output power was specified for multiple OFDM transmission mode configurations in a frequency band or aggregated band, SAR is measured using the configuration with the largest channel bandwidth, lowest order modulation and lowest data rate. When the maximum output power of a channel is the same for equivalent OFDM configurations; for example, 802.11a, and 802.11n or 802.11g and 802.11n with the same channel bandwidth, modulation, and data rate etc., the lower order 802.11 mode i.e., 802.11a, then 802.11n or 802.11g then 802.11n, is used for SAR measurement. When the maximum output power are the same for multiple test channels, either according to the default or additional power measurement requirements, SAR is measured using the channel closest to the middle of the frequency band or aggregated band. When there are multiple channels with the same maximum output power, SAR is measured using the higher number channel.

6.2.6 Initial Test Configuration Procedure

For OFDM, an initial test configuration is determined for each frequency band and aggregated band, according to the transmission mode with the highest maximum output power specified for SAR measurements. When the same maximum output power is specified for multiple OFDM transmission mode configurations in a frequency band or aggregated band, SAR is measured using the configuration(s) with the largest channel bandwidth, lowest order modulation, lowest data rate and lowest order IEEE 802.11 mode. The channel of the transmission mode with the highest average RF output conducted power will be the initial test configuration.

When the reported SAR is ≤ 0.8 W/kg, no additional measurements on other test channels are required. Otherwise, SAR is evaluated using the subsequent highest average RF output channel until the reported SAR result is ≤ 1.2 W/kg or all channels are measured. When there are multiple untested channels having the same subsequent highest average RF output power, the channel with higher frequency from the lowest 802.11 mode is considered for SAR measurements (See Section 6.2.5). When 10g SAR measurement is considered, a factor of 2.5 is applied to the thresholds above.

6.2.7 Subsequent Test Configuration Procedures

For OFDM configurations in each frequency band and aggregated band, SAR is evaluated for initial test configuration using the fixed test position or the initial test position procedure. When the highest reported SAR (for the initial test configuration), adjusted by the ratio of the specified maximum output power of the subsequent test configuration to initial test configuration, is ≤ 1.2 W/kg, no additional SAR tests for the subsequent test configurations are required. When 10g SAR measurement is considered, a factor of 2.5 is applied to the thresholds above.

FCC ID: BCG-A3331	RF EXPOSURE REPORT	Approved by: Technical Manager
DUT Type: Watch		Page 12 of 28

REV 24.0
03/26/2025

7 RF CONDUCTED POWERS

7.1 WLAN Conducted Powers

Table 7-1
2.4 GHz WLAN Maximum Average RF Power

2.4GHz WIFI (20MHz 802.11b SISO)			2.4GHz WIFI (20MHz 802.11g SISO)			2.4GHz WIFI (20MHz 802.11n SISO)		
Freq. [MHz]	Channel	Conducted Power [dBm]	Freq. [MHz]	Channel	Conducted Power [dBm]	Freq. [MHz]	Channel	Conducted Power [dBm]
2412	1	19.08	2412	1	15.92	2412	1	15.63
2437	6	18.90	2437	6	17.35	2437	6	17.06
2462	11	18.97	2462	11	15.56	2462	11	15.59

Table 7-2
5 GHz WLAN Maximum Average RF Power

5GHz WIFI (20MHz 802.11a SISO)				5GHz WIFI (20MHz 802.11n SISO)			
Band	Freq. [MHz]	Channel	Avg. Conducted Power [dBm]	Band	Freq. [MHz]	Channel	Avg. Conducted Power [dBm]
UNII-1	5180	36	16.23	UNII-1	5180	36	16.11
	5200	40	16.29		5200	40	16.15
	5220	44	16.22		5220	44	16.17
	5240	48	16.18		5240	48	16.23
UNII-2A	5260	52	16.34	UNII-2A	5260	52	16.30
	5280	56	16.27		5280	56	16.20
	5300	60	16.11		5300	60	16.26
	5320	64	16.09		5320	64	16.19
UNII-2C	5500	100	16.19	UNII-2C	5500	100	16.30
	5600	120	16.02		5600	120	16.35
	5620	124	16.34		5620	124	16.23
	5720	144	16.28		5720	144	16.19
UNII-3	5745	149	16.12	UNII-3	5745	149	16.18
	5785	157	16.20		5785	157	16.13
	5825	165	16.05		5825	165	16.10

Justification for test configurations for WLAN per KDB Publication 248227 D01v02r02:

- Power measurements were performed for the transmission mode configuration with the highest maximum output power specified for production units.
- For transmission modes with the same maximum output power specification, powers were measured for the largest channel bandwidth, lowest order modulation and lowest data rate.
- For transmission modes with identical maximum specified output power, channel bandwidth, modulation and data rates, power measurements were required for all identical configurations.
- For each transmission mode configuration, powers were measured for the highest and lowest channels; and at the mid-band channel(s) when there were at least 3 channels supported. For configurations with multiple mid-band channels, due to an even number of channels, both channels were measured.

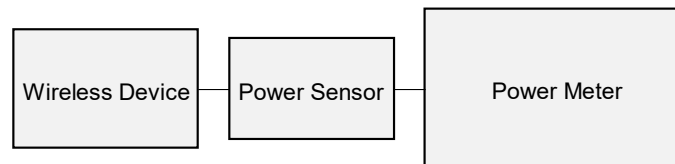


Figure 7-1
Power Measurement Setup

FCC ID: BCG-A3331	RF EXPOSURE REPORT	Approved by: Technical Manager
DUT Type: Watch		Page 13 of 28

REV 24.0
03/26/2025

Unless otherwise specified, no part of this report may be reproduced or utilized in any part, form or by any means, electronic or mechanical, including photocopying and microfilm, without permission in writing from Element. If you have any questions or have an enquiry about obtaining additional rights to this report or assembly of contents thereof, please contact CT.INFO@ELEMENT.COM.

7.2 Bluetooth Conducted Powers

Table 7-3
Bluetooth Average RF Power

Frequency [MHz]	Modulation	Data Rate [Mbps]	Channel No.	Avg Conducted Power	
				[dBm]	[mW]
2402	GFSK	1.0	0	17.26	53.211
2441	GFSK	1.0	39	17.15	51.880
2480	GFSK	1.0	78	17.17	52.119

Note 1: Bluetooth was evaluated with a test mode with 100% transmission duty factor.

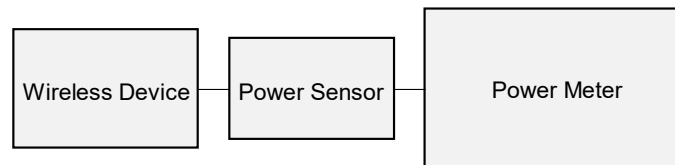


Figure 7-2
Power Measurement Setup

7.3 802.15.4 ab-NB Conducted Powers

Table 7-4
802.15.4 ab-NB Average RF Power

Frequency [MHz]	Modulation	Data Rate [Mbps]	Channel	Avg Conducted Power	
				[dBm]	[mW]
5728.75	O-QPSK	1.0	Low	15.11	32.434
5786.25	O-QPSK	1.0	Middle	15.12	32.509
5846.25	O-QPSK	1.0	High	15.08	32.211

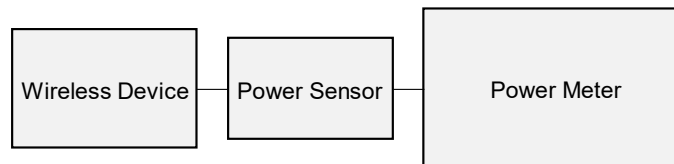


Figure 7-3
Power Measurement Setup

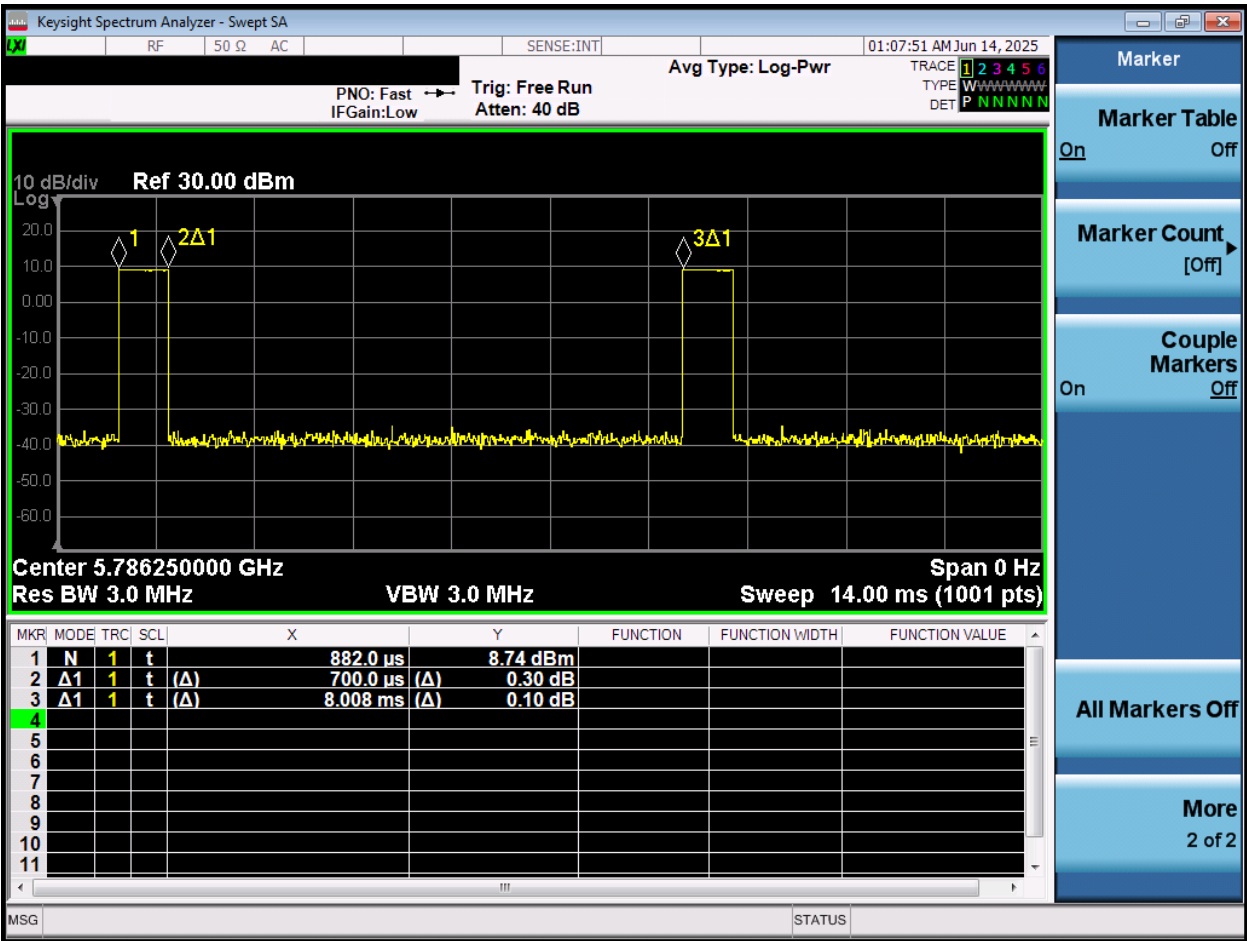
FCC ID: BCG-A3331	RF EXPOSURE REPORT	Approved by: Technical Manager
DUT Type: Watch		Page 14 of 28

REV 24.0
03/26/2025

Unless otherwise specified, no part of this report may be reproduced or utilized in any part, form or by any means, electronic or mechanical, including photocopying and microfilm, without permission in writing from Element. If you have any questions or have an enquiry about obtaining additional rights to this report or assembly of contents thereof, please contact CT.INFO@ELEMENT.COM.

7.4 802.15.4 ab-NB Duty Cycle

Figure 7-4
802.15.4 ab-NB Transmission Plot



Equation 7-1
802.15.4 ab-NB Duty Cycle Calculation

$$Duty\ Cycle = \frac{Pulse\ Width}{Period} * 100\% = \frac{0.7\ ms}{8.008\ ms} * 100\% = 8.74\%$$

FCC ID: BCG-A3331	RF EXPOSURE REPORT	Approved by: Technical Manager
DUT Type: Watch		Page 15 of 28

REV 24.0
03/26/2025

8 SYSTEM VERIFICATION

8.1 Tissue Verification

Table 8-1
Measured Head Tissue Properties

Calibrated for Tests Performed on:	Tissue Type	Tissue Temp During Calibration (°C)	Measured Frequency (MHz)	Measured Conductivity, σ (S/m)	Measured Dielectric Constant, ϵ	TARGET Conductivity, σ (S/m)	TARGET Dielectric Constant, ϵ	% dev σ	% dev ϵ
07/09/2025	30 Head	24.0	4	0.746	57.242	0.750	55.000	-0.53%	4.08%
			6	0.746	56.745	0.750	55.000	-0.53%	3.17%
			12	0.746	55.667	0.750	55.000	-0.53%	1.21%
			13	0.746	55.565	0.750	55.000	-0.53%	1.03%
			14	0.746	55.475	0.750	55.000	-0.53%	0.86%
			30	0.748	54.746	0.750	55.000	-0.27%	-0.46%
			60	0.753	54.009	0.753	54.325	0.00%	-0.58%
			65	0.754	53.968	0.753	54.213	0.13%	-0.45%
06/23/2025	2450 Head	24.6	150	0.782	52.358	0.760	52.300	2.89%	0.11%
			2300	1.680	39.256	1.670	39.500	0.60%	-0.62%
			2310	1.690	39.227	1.679	39.480	0.66%	-0.64%
			2320	1.701	39.191	1.687	39.460	0.83%	-0.68%
			2400	1.800	38.871	1.756	39.289	2.51%	-1.06%
			2450	1.854	38.671	1.800	39.200	3.00%	-1.35%
			2480	1.895	38.506	1.833	39.162	3.38%	-1.68%
			2500	1.921	38.441	1.855	39.136	3.56%	-1.78%
			2510	1.932	38.421	1.866	39.123	3.54%	-1.79%
			2535	1.957	38.357	1.893	39.092	3.38%	-1.88%
			2550	1.974	38.290	1.909	39.073	3.40%	-2.00%
			2560	1.986	38.232	1.920	39.060	3.44%	-2.12%
			2600	2.042	38.028	1.964	39.009	3.97%	-2.51%
			2650	2.096	37.902	2.018	38.945	3.87%	-2.68%
06/18/2025	2450 Head	21.0	2680	2.129	37.737	2.051	38.907	3.80%	-3.01%
			2700	2.157	37.629	2.073	38.882	4.05%	-3.22%
			2300	1.677	38.672	1.670	39.500	0.42%	-2.10%
			2310	1.681	38.643	1.679	39.480	0.12%	-2.12%
			2320	1.688	38.626	1.687	39.460	0.06%	-2.11%
			2400	1.752	38.550	1.756	39.289	-0.23%	-1.88%
			2450	1.787	38.439	1.800	39.200	-0.72%	-1.94%
			2480	1.824	38.422	1.833	39.162	-0.49%	-1.89%
			2500	1.836	38.401	1.855	39.136	-1.02%	-1.88%
			2510	1.837	38.383	1.866	39.123	-1.55%	-1.89%
			2535	1.845	38.337	1.893	39.092	-2.54%	-1.93%
			2550	1.858	38.312	1.909	39.073	-2.67%	-1.95%
			2560	1.871	38.295	1.920	39.060	-2.55%	-1.96%
			2600	1.922	38.253	1.964	39.009	-2.14%	-1.94%
			2650	1.936	38.188	2.018	38.945	-4.06%	-1.94%
			2680	1.972	38.107	2.051	38.907	-3.85%	-2.06%
			2700	2.002	38.058	2.073	38.882	-3.42%	-2.12%

FCC ID: BCG-A3331	RF EXPOSURE REPORT	Approved by: Technical Manager
DUT Type: Watch		Page 16 of 28

REV 24.0
03/26/2025

Unless otherwise specified, no part of this report may be reproduced or utilized in any part, form or by any means, electronic or mechanical, including photocopying and microfilm, without permission in writing from Element. If you have any questions or have an enquiry about obtaining additional rights to this report or assembly of contents thereof, please contact CT.INFO@ELEMENT.COM.

Calibrated for Tests Performed on:	Tissue Type	Tissue Temp During Calibration (°C)	Measured Frequency (MHz)	Measured Conductivity, σ (S/m)	Measured Dielectric Constant, ϵ	TARGET Conductivity, σ (S/m)	TARGET Dielectric Constant, ϵ	% dev σ	% dev ϵ
06/24/2025	5200-5800 Head	19.0	5150	4.488	35.232	4.608	36.050	-2.60%	-2.27%
			5160	4.500	35.215	4.618	36.040	-2.56%	-2.29%
			5170	4.514	35.193	4.629	36.030	-2.48%	-2.32%
			5180	4.528	35.166	4.635	36.009	-2.31%	-2.34%
			5190	4.544	35.144	4.645	35.998	-2.17%	-2.37%
			5200	4.557	35.130	4.655	35.986	-2.11%	-2.38%
			5210	4.568	35.120	4.666	35.975	-2.10%	-2.38%
			5220	4.575	35.100	4.676	35.963	-2.16%	-2.40%
			5240	4.595	35.047	4.696	35.940	-2.15%	-2.48%
			5250	4.606	35.036	4.706	35.929	-2.12%	-2.49%
			5260	4.615	35.021	4.717	35.917	-2.16%	-2.49%
			5270	4.626	35.000	4.727	35.906	-2.14%	-2.52%
			5280	4.641	34.968	4.737	35.894	-2.03%	-2.58%
			5290	4.659	34.938	4.748	35.883	-1.87%	-2.63%
			5300	4.672	34.921	4.758	35.871	-1.81%	-2.65%
			5310	4.680	34.914	4.768	35.860	-1.85%	-2.64%
			5320	4.688	34.901	4.778	35.849	-1.88%	-2.64%
			5500	4.897	34.533	4.963	35.643	-1.33%	-3.11%
			5510	4.911	34.513	4.973	35.632	-1.25%	-3.14%
			5520	4.922	34.503	4.983	35.620	-1.22%	-3.14%
			5530	4.936	34.479	4.994	35.609	-1.16%	-3.17%
			5540	4.947	34.453	5.004	35.597	-1.14%	-3.21%
			5550	4.958	34.436	5.014	35.586	-1.12%	-3.23%
			5560	4.967	34.422	5.024	35.574	-1.13%	-3.24%
			5580	4.983	34.396	5.045	35.551	-1.23%	-3.25%
			5600	5.014	34.328	5.065	35.529	-1.01%	-3.38%
			5610	5.031	34.304	5.076	35.518	-0.89%	-3.42%
			5620	5.042	34.301	5.086	35.506	-0.87%	-3.39%
			5640	5.072	34.264	5.106	35.483	-0.67%	-3.44%
			5660	5.092	34.228	5.127	35.460	-0.68%	-3.47%
			5670	5.099	34.222	5.137	35.449	-0.74%	-3.46%
			5680	5.107	34.205	5.147	35.437	-0.78%	-3.48%
			5690	5.119	34.178	5.158	35.426	-0.76%	-3.52%
			5700	5.132	34.146	5.168	35.414	-0.70%	-3.58%
			5710	5.146	34.118	5.178	35.403	-0.62%	-3.63%
			5720	5.160	34.094	5.188	35.391	-0.54%	-3.66%
			5745	5.194	34.050	5.214	35.363	-0.38%	-3.71%
			5750	5.201	34.045	5.219	35.357	-0.34%	-3.71%
			5755	5.208	34.039	5.224	35.351	-0.31%	-3.71%
			5765	5.220	34.029	5.234	35.340	-0.27%	-3.71%
			5775	5.229	34.011	5.245	35.329	-0.31%	-3.73%
			5785	5.235	33.987	5.255	35.317	-0.38%	-3.77%
			5795	5.243	33.962	5.265	35.305	-0.42%	-3.80%
			5800	5.249	33.944	5.270	35.300	-0.40%	-3.84%
			5800	5.249	33.944	5.270	35.300	-0.40%	-3.84%
			5805	5.255	33.930	5.275	35.294	-0.38%	-3.86%
			5825	5.281	33.884	5.296	35.271	-0.28%	-3.93%
			5835	5.294	33.871	5.305	35.230	-0.21%	-3.86%
			5845	5.307	33.867	5.315	35.210	-0.15%	-3.81%
			5850	5.314	33.864	5.320	35.200	-0.11%	-3.80%
			5855	5.320	33.858	5.325	35.197	-0.09%	-3.80%
			5865	5.330	33.837	5.336	35.190	-0.11%	-3.84%
			5865	5.330	33.837	5.336	35.190	-0.11%	-3.84%
			5865	5.330	33.837	5.336	35.190	-0.11%	-3.84%
			5875	5.342	33.814	5.347	35.183	-0.09%	-3.89%
			5885	5.357	33.799	5.357	35.177	0.00%	-3.92%
			5905	5.375	33.754	5.379	35.163	-0.07%	-4.01%

FCC ID: BCG-A3331	RF EXPOSURE REPORT	Approved by: Technical Manager
DUT Type: Watch		Page 17 of 28

REV 24.0
03/26/2025

Unless otherwise specified, no part of this report may be reproduced or utilized in any part, form or by any means, electronic or mechanical, including photocopying and microfilm, without permission in writing from Element. If you have any questions or have an enquiry about obtaining additional rights to this report or assembly of contents thereof, please contact CT.INFO@ELEMENT.COM.

Calibrated for Tests Performed on:	Tissue Type	Tissue Temp During Calibration (°C)	Measured Frequency (MHz)	Measured Conductivity, σ (S/m)	Measured Dielectric Constant, ϵ	TARGET Conductivity, σ (S/m)	TARGET Dielectric Constant, ϵ	% dev σ	% dev ϵ
07/11/2025	5200-5800 Head	20.0	5150	4.530	36.203	4.608	36.050	-1.69%	0.42%
			5160	4.540	36.191	4.618	36.040	-1.69%	0.42%
			5170	4.553	36.166	4.629	36.030	-1.64%	0.38%
			5180	4.564	36.144	4.635	36.009	-1.53%	0.37%
			5190	4.579	36.126	4.645	35.998	-1.42%	0.36%
			5200	4.586	36.108	4.655	35.986	-1.48%	0.34%
			5210	4.598	36.098	4.666	35.975	-1.46%	0.34%
			5220	4.612	36.087	4.676	35.963	-1.37%	0.34%
			5240	4.638	36.040	4.696	35.940	-1.24%	0.28%
			5250	4.648	36.019	4.706	35.929	-1.23%	0.25%
			5260	4.655	36.004	4.717	35.917	-1.31%	0.24%
			5270	4.667	35.991	4.727	35.906	-1.27%	0.24%
			5280	4.679	35.975	4.737	35.894	-1.22%	0.23%
			5290	4.690	35.944	4.748	35.883	-1.22%	0.17%
			5300	4.702	35.921	4.758	35.871	-1.18%	0.14%
			5310	4.710	35.905	4.768	35.860	-1.22%	0.13%
			5320	4.723	35.903	4.778	35.849	-1.15%	0.15%
			5500	4.924	35.563	4.963	35.643	-0.79%	-0.22%
			5510	4.930	35.552	4.973	35.632	-0.86%	-0.22%
			5520	4.941	35.537	4.983	35.620	-0.84%	-0.23%
			5530	4.954	35.503	4.994	35.609	-0.80%	-0.30%
			5540	4.971	35.468	5.004	35.597	-0.66%	-0.36%
			5550	4.984	35.443	5.014	35.586	-0.60%	-0.40%
			5560	4.994	35.437	5.024	35.574	-0.60%	-0.39%
			5580	5.007	35.412	5.045	35.551	-0.75%	-0.39%
			5600	5.041	35.368	5.065	35.529	-0.47%	-0.45%
			5610	5.055	35.363	5.076	35.518	-0.41%	-0.44%
			5620	5.064	35.357	5.086	35.506	-0.43%	-0.42%
			5640	5.089	35.298	5.106	35.483	-0.33%	-0.52%
			5660	5.115	35.257	5.127	35.460	-0.23%	-0.57%
			5670	5.122	35.245	5.137	35.449	-0.29%	-0.58%
			5680	5.134	35.232	5.147	35.437	-0.25%	-0.58%
			5690	5.148	35.222	5.158	35.426	-0.19%	-0.58%
			5700	5.160	35.202	5.168	35.414	-0.15%	-0.60%
			5710	5.172	35.184	5.178	35.403	-0.12%	-0.62%
			5720	5.179	35.164	5.188	35.391	-0.17%	-0.64%
			5745	5.212	35.096	5.214	35.363	-0.04%	-0.76%
			5750	5.219	35.081	5.219	35.357	0.00%	-0.78%
			5755	5.225	35.071	5.224	35.351	0.02%	-0.79%
			5765	5.238	35.056	5.234	35.340	0.08%	-0.80%
			5775	5.247	35.047	5.245	35.329	0.04%	-0.80%
			5785	5.260	35.041	5.255	35.317	0.10%	-0.78%
			5795	5.271	35.032	5.265	35.305	0.11%	-0.77%
			5800	5.278	35.024	5.270	35.300	0.15%	-0.78%
			5800	5.278	35.024	5.270	35.300	0.15%	-0.78%
			5805	5.284	35.014	5.275	35.294	0.17%	-0.79%
			5825	5.302	34.978	5.296	35.271	0.11%	-0.83%
			5835	5.311	34.972	5.305	35.230	0.11%	-0.73%
			5845	5.324	34.961	5.315	35.210	0.17%	-0.71%
			5850	5.329	34.950	5.320	35.200	0.17%	-0.71%
			5855	5.336	34.943	5.325	35.197	0.21%	-0.72%
			5865	5.351	34.911	5.336	35.190	0.28%	-0.79%
			5865	5.351	34.911	5.336	35.190	0.28%	-0.79%
			5865	5.351	34.911	5.336	35.190	0.28%	-0.79%
			5865	5.351	34.911	5.336	35.190	0.28%	-0.79%
			5875	5.362	34.878	5.347	35.183	0.28%	-0.87%
			5885	5.369	34.848	5.357	35.177	0.22%	-0.94%
			5905	5.394	34.819	5.379	35.163	0.28%	-0.98%

The above measured tissue parameters were used in the DASY software. The DASY software was used to perform interpolation to determine the dielectric parameters at the SAR test device frequencies (per KDB Publication 865664 D01v01r04 and IEEE 1528-2013 6.6.1.2). The tissue parameters listed in the SAR test plots may slightly differ from the table above due to significant digit rounding in the software.

Per April 2019 TCB Workshop Notes, single head-tissue simulating liquid specified in IEC 62209-1 is permitted to use for all SAR tests.

FCC ID: BCG-A3331	RF EXPOSURE REPORT	Approved by: Technical Manager
DUT Type: Watch		Page 18 of 28

REV 24.0
03/26/2025

Unless otherwise specified, no part of this report may be reproduced or utilized in any part, form or by any means, electronic or mechanical, including photocopying and microfilm, without permission in writing from Element. If you have any questions or have an enquiry about obtaining additional rights to this report or assembly of contents thereof, please contact CT.INFO@ELEMENT.COM.

8.2 Test System Verification

Prior to SAR assessment, the system is verified to $\pm 10\%$ of the SAR measurement on the reference dipole at the time of calibration by the calibration facility. Full system validation status and result summary can be found in the SAR System Validation Appendix.

Table 8-2
System Verification Results – 1g

System Verification TARGET & MEASURED													
SAR System	Tissue Frequency (MHz)	Tissue Type	Date	Amb. Temp. (°C)	Liquid Temp. (°C)	Input Power (W)	Source SN	Probe SN	DAE	Measured SAR 1g (W/kg)	1W Target SAR 1g (W/kg)	1W Normalized SAR 1g (W/kg)	Deviation 1g (%)
AM11	2450	HEAD	06/18/2025	19.9	20.0	0.10	750	7551	1323	5.140	53.300	51.400	-3.56%
AM9	5250	HEAD	06/24/2025	21.1	19.4	0.05	1066	7782	1646	3.950	77.900	79.000	1.41%
AM8	5250	HEAD	07/11/2025	20.4	19.6	0.05	1066	7499	1465	3.820	77.900	76.400	-1.93%
AM9	5600	HEAD	06/24/2025	21.1	19.4	0.05	1066	7782	1646	4.240	81.800	84.800	3.67%
AM8	5600	HEAD	07/11/2025	20.4	19.6	0.05	1066	7499	1465	4.340	81.800	86.800	6.11%
AM9	5750	HEAD	06/24/2025	21.1	19.4	0.05	1066	7782	1646	3.960	80.700	79.200	-1.86%
AM8	5750	HEAD	07/11/2025	20.4	19.6	0.05	1066	7499	1465	3.960	80.700	79.200	-1.86%
AM9	5850	HEAD	06/24/2025	21.1	19.4	0.05	1066	7782	1646	3.950	77.400	79.000	2.07%
AM8	5850	HEAD	07/11/2025	20.4	19.6	0.05	1066	7499	1465	4.100	77.400	82.000	5.94%

Table 8-3
System Verification Results – 10g

System Verification TARGET & MEASURED													
SAR System	Tissue Frequency (MHz)	Tissue Type	Date	Amb. Temp. (°C)	Liquid Temp. (°C)	Input Power (W)	Source SN	Probe SN	DAE	Measured SAR 10g (W/kg)	1W Target SAR 10g (W/kg)	1W Normalized SAR 10g (W/kg)	Deviation 10g (%)
AM14	13	HEAD	07/09/2025	22.3	22.5	1.00	1004	3746	1237	0.365	0.355	0.365	2.82%
AM11	2450	HEAD	06/18/2025	19.9	20.0	0.10	750	7551	1323	2.400	25.100	24.000	-4.38%
AM16	2450	HEAD	06/23/2025	21.0	23.4	0.10	750	7532	501	2.400	25.100	24.000	-4.38%
AM9	5250	HEAD	06/24/2025	21.1	19.4	0.05	1066	7782	1646	1.130	22.500	22.600	0.44%
AM9	5600	HEAD	06/24/2025	21.1	19.4	0.05	1066	7782	1646	1.210	23.700	24.200	2.11%
AM9	5750	HEAD	06/24/2025	21.1	19.4	0.05	1066	7782	1646	1.130	23.200	22.600	-2.59%
AM9	5850	HEAD	06/24/2025	21.1	19.4	0.05	1066	7782	1646	1.100	22.200	22.000	-0.90%

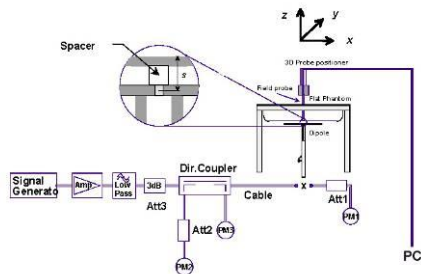


Figure 8-1
System Verification Setup Diagram



Figure 8-2
System Verification Setup Photo

FCC ID: BCG-A3331	RF EXPOSURE REPORT	Approved by: Technical Manager
DUT Type: Watch		Page 19 of 28

REV 24.0
03/26/2025

Unless otherwise specified, no part of this report may be reproduced or utilized in any part, form or by any means, electronic or mechanical, including photocopying and microfilm, without permission in writing from Element. If you have any questions or have an enquiry about obtaining additional rights to this report or assembly of contents thereof, please contact CT.INFO@ELEMENT.COM.

9 SAR DATA SUMMARY

9.1 2.4 GHz WIFI SISO Standalone Head SAR

Table 9-1

Exposure	Band / Mode	Bandwidth [MHz]	Service / Modulation	Housing Type	Wristband Type	Serial Number	Duty Cycle [%]	Power Drift [dB]	Frequency [MHz]	Channel #	Data Rate [Mbps]	Max Allowed Power [dBm]	Conducted Power [dBm]	Test Position	Spacing [mm]	Measured 1g SAR [W/kg]	Power Scaling Factor	Duty Cycle Scaling Factor	Reported 1g SAR [W/kg]	Exposure Ratio (1g SAR)	Plot #
Head	2.4 GHz WIFI / IEEE 802.11b	22	DSSS	Aluminum	Sport	X4TDQ	99.76	-0.05	2412	1	1.0	20.00	19.08	Front	10	0.339	1.236	1.002	0.420	0.212	A1
Head	2.4 GHz WIFI / IEEE 802.11b	22	DSSS	Aluminum	Metal Loop	X4TDQ	99.76	-0.05	2412	1	1.0	20.00	19.08	Front	10	0.221	1.236	1.002	0.274	0.138	
Head	2.4 GHz WIFI / IEEE 802.11b	22	DSSS	Aluminum	Metal Links	X4TDQ	99.76	-0.02	2412	1	1.0	20.00	19.08	Front	10	0.221	1.236	1.002	0.274	0.138	
ANSI/IEEE C95.1 1992 - SAFETY LIMIT Spatial Peak Uncontrolled Exposure/General Population														Head 1.6 W/kg (mW/g) averaged over 1 gram							

9.2 2.4 GHz WIFI SISO Standalone Extremity SAR

Table 9-2

Exposure	Band / Mode	Bandwidth [MHz]	Service / Modulation	Housing Type	Wristband Type	Serial Number	Duty Cycle [%]	Power Drift [dB]	Frequency [MHz]	Channel #	Data Rate [Mbps]	Max Allowed Power [dBm]	Conducted Power [dBm]	Test Position	Spacing [mm]	Measured 10g SAR [W/kg]	Power Scaling Factor	Duty Cycle Scaling Factor	Reported 10g SAR [W/kg]	Exposure Ratio (10g SAR)	Plot #
Extremity	2.4 GHz WIFI / IEEE 802.11b	22	DSSS	Aluminum	Sport	X4TDQ	99.76	0.05	2412	1	1.0	20.00	19.08	Back	0	0.011	1.236	1.002	0.014	0.003	
Extremity	2.4 GHz WIFI / IEEE 802.11b	22	DSSS	Aluminum	Metal Loop	X4TDQ	99.76	0.08	2412	1	1.0	20.00	19.08	Back	0	0.010	1.236	1.002	0.012	0.003	
Extremity	2.4 GHz WIFI / IEEE 802.11b	22	DSSS	Aluminum	Metal Links	X4TDQ	99.76	0.05	2412	1	1.0	20.00	19.08	Back	0	0.022	1.236	1.002	0.027	0.006	A2
ANSI/IEEE C95.1 1992 - SAFETY LIMIT Spatial Peak Uncontrolled Exposure/General Population														Extremity 4.0 W/kg (mW/g) averaged over 10 grams							

9.3 5 GHz WIFI SISO Standalone Head SAR

Table 9-3

Exposure	Band / Mode	Bandwidth [MHz]	Service / Modulation	Housing Type	Wristband Type	Serial Number	Duty Cycle [%]	Power Drift [dB]	Frequency [MHz]	Channel #	U-NII band	Data Rate [Mbps]	Max Allowed Power [dBm]	Conducted Power [dBm]	Test Position	Spacing [mm]	Measured 1g SAR [W/kg]	Power Scaling Factor	Duty Cycle Scaling Factor	Reported 1g SAR [W/kg]	Exposure Ratio (1g SAR)	Plot #
Head	5 GHz WiFi /IEEE 802.11a	20	OFDM	Aluminum	Sport	3Y556	93.29	0.05	5260	52	U-NII-2A	6.0	17.00	16.34	Front	10	0.098	1.164	1.072	0.122	0.061	
Head	5 GHz WiFi /IEEE 802.11a	20	OFDM	Aluminum	Metal Loop	3Y556	93.29	0.03	5260	52	U-NII-2A	6.0	17.00	16.34	Front	10	0.090	1.164	1.072	0.112	0.056	
Head	5 GHz WiFi /IEEE 802.11a	20	OFDM	Aluminum	Metal Links	3Y556	93.29	-0.17	5260	52	U-NII-2A	6.0	17.00	16.34	Front	10	0.093	1.164	1.072	0.116	0.058	
Head	5 GHz WiFi /IEEE 802.11a	20	OFDM	Aluminum	Sport	3Y556	93.29	0.20	5620	124	U-NII-2C	6.0	17.00	16.34	Front	10	0.112	1.164	1.072	0.140	0.070	
Head	5 GHz WiFi /IEEE 802.11a	20	OFDM	Aluminum	Metal Loop	3Y556	93.29	0.01	5620	124	U-NII-2C	6.0	17.00	16.34	Front	10	0.099	1.164	1.072	0.124	0.062	
Head	5 GHz WiFi /IEEE 802.11a	20	OFDM	Aluminum	Metal Links	3Y556	93.29	0.02	5620	124	U-NII-2C	6.0	17.00	16.34	Front	10	0.090	1.164	1.072	0.112	0.056	
Head	5 GHz WiFi /IEEE 802.11a	20	OFDM	Aluminum	Sport	3Y556	93.29	0.02	5785	157	U-NII-3	6.0	17.00	16.20	Front	10	0.134	1.202	1.072	0.179	0.084	
Head	5 GHz WiFi /IEEE 802.11a	20	OFDM	Aluminum	Metal Loop	3Y556	93.29	0.08	5785	157	U-NII-3	6.0	17.00	16.20	Front	10	0.131	1.202	1.072	0.169	0.082	
Head	5 GHz WiFi /IEEE 802.11a	20	OFDM	Aluminum	Metal Links	3Y556	93.29	0.01	5785	157	U-NII-3	6.0	17.00	16.20	Front	10	0.142	1.202	1.072	0.189	0.089	A3
ANSI/IEEE C95.1 1992 - SAFETY LIMIT														Head								
Spatial Peak														1.6 W/kg (mW/g)								
Uncontrolled Exposure/General Population														averaged over 1 gram								

9.4 5 GHz WIFI SISO Standalone Extremity SAR

Table 9-4

Exposure	Band / Mode	Bandwidth [MHz]	Service / Modulation	Housing Type	Wristband Type	Serial Number	Duty Cycle [%]	Power Drift [dB]	Frequency [MHz]	Channel #	U-NII band	Data Rate [Mbps]	Max Allowed Power [dBm]	Conducted Power [dBm]	Test Position	Spacing [mm]	Measured 10g SAR [W/kg]	Power Scaling Factor	Duty Cycle Scaling Factor	Reported 10g SAR [W/kg]	Exposure Ratio (10g SAR)	Plot #
Extremity	5 GHz WiFi IEEE 802.11a	20	OFDM	Aluminum	Sport	FL4FH	93.29	0.09	5260	52	U-NII-2A	6.0	17.00	16.34	Back	0	0.000	1.164	1.072	0.000	0.000	
Extremity	5 GHz WiFi IEEE 802.11a	20	OFDM	Aluminum	Metal Loop	FL4FH	93.29	0.04	5260	52	U-NII-2A	6.0	17.00	16.34	Back	0	0.004	1.164	1.072	0.005	0.001	
Extremity	5 GHz WiFi IEEE 802.11a	20	OFDM	Aluminum	Metal Links	FL4FH	93.29	0.04	5260	52	U-NII-2A	6.0	17.00	16.34	Back	0	0.000	1.164	1.072	0.000	0.000	
Extremity	5 GHz WiFi IEEE 802.11a	20	OFDM	Aluminum	Sport	FL4FH	93.29	0.01	5620	124	U-NII-2C	6.0	17.00	16.34	Back	0	0.004	1.164	1.072	0.005	0.001	
Extremity	5 GHz WiFi IEEE 802.11a	20	OFDM	Aluminum	Metal Loop	FL4FH	93.29	0.06	5620	124	U-NII-2C	6.0	17.00	16.34	Back	0	0.010	1.164	1.072	0.012	0.003	
Extremity	5 GHz WiFi IEEE 802.11a	20	OFDM	Aluminum	Metal Links	FL4FH	93.29	0.02	5620	124	U-NII-2C	6.0	17.00	16.34	Back	0	0.007	1.164	1.072	0.009	0.002	
Extremity	5 GHz WiFi IEEE 802.11a	20	OFDM	Aluminum	Sport	FL4FH	93.29	0.05	5785	157	U-NII-3	6.0	17.00	16.20	Back	0	0.012	1.202	1.072	0.015	0.001	
Extremity	5 GHz WiFi IEEE 802.11a	20	OFDM	Aluminum	Metal Loop	FL4FH	93.29	0.09	5785	157	U-NII-3	6.0	17.00	16.20	Back	0	0.017	1.202	1.072	0.022	0.004	A4
Extremity	5 GHz WiFi IEEE 802.11a	20	OFDM	Aluminum	Metal Links	FL4FH	93.29	0.11	5785	157	U-NII-3	6.0	17.00	16.20	Back	0	0.012	1.202	1.072	0.015	0.003	
ANSI/IEEE C95.1 1992 - SAFETY LIMIT														Extremity								
Spatial Peak														4.0 W/kg (mW/g)								
Uncontrolled Exposure/General Population														averaged over 10 grams								

9.5 2.4 GHz Bluetooth SISO Standalone Head SAR

Table 9-5

Exposure	Band / Mode	Service / Modulation	Housing Type	Wristband Type	Serial Number	Duty Cycle [%]	Power Drift [dB]	Frequency [MHz]	Channel #	Data Rate [Mbps]	Max Allowed Power [dBm]	Conducted Power [dBm]	Test Position	Spacing [mm]	Measured 1g SAR [W/kg]	Power Scaling Factor	Duty Cycle Scaling Factor	Reported 1g SAR [W/kg]	Exposure Ratio (1g SAR)	Plot #
Head	2.4 GHz Bluetooth	FHSS	Aluminum	Sport	X4TDQ	100%	-0.03	2402	0	1	18.50	17.26	Front	10	0.211	1.330	1.000	0.281	0.132	A5
Head	2.4 GHz Bluetooth	FHSS	Aluminum	Metal Loop	X4TDQ	100%	0.00	2402	0	1	18.50	17.26	Front	10	0.150	1.330	1.000	0.200	0.094	
Head	2.4 GHz Bluetooth	FHSS	Aluminum	Metal Links	X4TDQ	100%	-0.04	2402	0	1	18.50	17.26	Front	10	0.143	1.330	1.000	0.190	0.089	
ANSI/IEEE C95.1 1992 - SAFETY LIMIT																				
Spatial Peak																				
Uncontrolled Exposure/General Population														Head 1.6 W/kg (mW/g) averaged over 1 gram						

FCC ID: BCG-A3331	RF EXPOSURE REPORT	Approved by: Technical Manager
DUT Type: Watch		Page 20 of 28

REV 24.0
03/26/2025

Unless otherwise specified, no part of this report may be reproduced or utilized in any part, form or by any means, electronic or mechanical, including photocopying and microfilm, without permission in writing from Element. If you have any questions or have an enquiry about obtaining additional rights to this report or assembly of contents thereof, please contact CT.INFO@ELEMENT.COM.

9.6 2.4 GHz Bluetooth SISO Standalone Extremity SAR

Table 9-6

Exposure	Band / Mode	Service / Modulation	Housing Type	Wristband Type	Serial Number	Duty Cycle [%]	Power Drift [dB]	Frequency [MHz]	Channel #	Data Rate [Mbps]	Max Allowed Power [dBm]	Conducted Power [dBm]	Test Position	Spacing [mm]	Measured 10g SAR [W/kg]	Power Scaling Factor	Duty Cycle Scaling Factor	Reported 10g SAR [W/kg]	Exposure Ratio (10g SAR)	Plot #
Extremity	2.4 GHz Bluetooth	PHSS	Aluminum	Sport	3Y156	100%	0.06	2402.00	0	1	18.50	17.26	Back	0	0.010	1.330	1.000	0.013	0.003	
Extremity	2.4 GHz Bluetooth	PHSS	Aluminum	Metal Loop	3Y156	100%	0.07	2402.00	0	1	18.50	17.26	Back	0	0.006	1.330	1.000	0.008	0.002	
Extremity	2.4 GHz Bluetooth	PHSS	Aluminum	Metal Links	3Y156	100%	-0.08	2402.00	0	1	18.50	17.26	Back	0	0.011	1.330	1.000	0.015	0.003	A6
ANSI/IEEE C95.1 1992 - SAFETY LIMIT Spatial Peak Uncontrolled Exposure/General Population													Extremity 4.0 W/kg (mW/g) averaged over 10 grams							

9.7 5 GHz 802.15.4 ab-NB SISO Standalone Head SAR

Table 9-7

Exposure	Band / Mode	Service / Modulation	Housing Type	Wristband Type	Serial Number	Duty Cycle [%]	Power Drift [dB]	Frequency [MHz]	Channel #	Data Rate [Mbps]	Max Allowed Power [dBm]	Conducted Power [dBm]	Test Position	Spacing [mm]	Measured 1g SAR [W/kg]	Power Scaling Factor	Duty Cycle Scaling Factor	Reported 1g SAR [W/kg]	Exposure Ratio (1g SAR)	Plot #
Head	802.15.4 ab-NB	O-QPSK	Aluminum	Sport	3Y156	8.74	0.01	5786.25	Mid	1	16.00	15.12	Front	10	0.013	1.225	1.018	0.016	0.008	
Head	802.15.4 ab-NB	O-QPSK	Aluminum	Metal Loop	3Y156	8.74	0.08	5786.25	Mid	1	16.00	15.12	Front	10	0.010	1.225	1.018	0.012	0.006	
Head	802.15.4 ab-NB	O-QPSK	Aluminum	Metal Links	3Y156	8.74	0.01	5786.25	Mid	1	16.00	15.12	Front	10	0.013	1.225	1.018	0.016	0.008	A7
ANSI/IEEE C95.1 1992 - SAFETY LIMIT Spatial Peak Uncontrolled Exposure/General Population													Head 1.6 W/kg (mW/g) averaged over 1 gram							

Note: The reported SAR was scaled to the 8.90% transmission duty factor.

9.8 5 GHz 802.15.4 ab-NB SISO Standalone Extremity SAR

Table 9-8

Exposure	Band / Mode	Service / Modulation	Housing Type	Wristband Type	Serial Number	Duty Cycle [%]	Power Drift [dB]	Frequency [MHz]	Channel #	Data Rate [Mbps]	Max Allowed Power [dBm]	Conducted Power [dBm]	Test Position	Spacing [mm]	Measured 10g SAR [W/kg]	Power Scaling Factor	Duty Cycle Scaling Factor	Reported 10g SAR [W/kg]	Exposure Ratio (10g SAR)	Plot #
Extremity	802.15.4 ab-NB	O-QPSK	Aluminum	Sport	3Y156	8.74	0.01	5786.25	Mid	1	16.00	15.12	Back	0	0.000	1.225	1.018	0.000	0.000	
Extremity	802.15.4 ab-NB	O-QPSK	Aluminum	Metal Loop	3Y156	8.74	0.03	5786.25	Mid	1	16.00	15.12	Back	0	0.000	1.225	1.018	0.000	0.000	A8
Extremity	802.15.4 ab-NB	O-QPSK	Aluminum	Metal Links	3Y156	8.74	0.06	5786.25	Mid	1	16.00	15.12	Back	0	0.000	1.225	1.018	0.000	0.000	
ANSI/IEEE C95.1 1992 - SAFETY LIMIT Spatial Peak Uncontrolled Exposure/General Population													Extremity 4.0 W/kg (mW/g) averaged over 10 grams							

Note: The reported SAR was scaled to the 8.90% transmission duty factor.

9.9 NFC Extremity SAR

Table 9-9

Exposure	Band / Mode	Signal Type	Housing Type	Wristband Type	Serial Number	Power Drift [dB]	Frequency [MHz]	Test Position	Spacing [mm]	Measured 10g SAR [W/kg]	Exposure Ratio (10g SAR)	Plot #
Extremity	NFC	B	Aluminum	Sport	PT7FL	0.03	13.56	Back	0	0.000	0.000	A9
Extremity	NFC	B	Aluminum	Metal Loop	PT7FL	0.01	13.56	Back	0	0.000	0.000	
Extremity	NFC	B	Aluminum	Metal Links	PT7FL	0.01	13.56	Back	0	0.000	0.000	
ANSI/IEEE C95.1 1992 - SAFETY LIMIT Spatial Peak Uncontrolled Exposure/General Population										Extremity 4.0 W/kg (mW/g) averaged over 10 grams		

9.10 SAR Test Notes

General Notes:

- The test data reported are the worst-case SAR values according to test procedures specified in FCC KDB Publication 447498 D04v01.
- Batteries are fully charged at the beginning of the SAR measurements.
- Liquid tissue depth was at least 15.0 cm for all frequencies.
- The manufacturer has confirmed that the device(s) tested have the same physical, mechanical, and thermal characteristics and are within operational tolerances expected for production units.
- SAR results were scaled to the maximum allowed power to demonstrate compliance per FCC KDB Publication 447498 D04v01.
- Per FCC KDB Publication 865664 D01v01r04, variability SAR tests were not required since measured SAR results for all frequency bands were less than 0.8 W/kg and 2.0 W/kg for 10g SAR.

FCC ID: BCG-A3331	RF EXPOSURE REPORT	Approved by: Technical Manager
DUT Type: Watch		Page 21 of 28

REV 24.0
03/26/2025

Unless otherwise specified, no part of this report may be reproduced or utilized in any part, form or by any means, electronic or mechanical, including photocopying and microfilm, without permission in writing from Element. If you have any questions or have an enquiry about obtaining additional rights to this report or assembly of contents thereof, please contact CT.INFO@ELEMENT.COM.

7. This device has one housing type: Aluminum. The non-metallic wrist accessory, sport band, was evaluated for all exposure conditions. The available metallic wrist accessories, metal links band and metal loop band, were additionally evaluated.
8. This device is a portable wrist-worn device and does not support any other use conditions. Therefore, the procedures in FCC KDB Publication 447498 D04v01 Section 5.2 have been applied for extremity and next to mouth (head) conditions.
9. Unless otherwise noted, when 10g SAR measurement is considered, a factor of 2.5 is applied to the thresholds below.

WLAN Notes:

1. Justification for test configurations for WLAN per KDB Publication 248227 D01v02r02 for 2.4 GHz WIFI single transmission chain operations, the highest measured maximum output power channel for DSSS was selected for SAR measurement. SAR for OFDM modes (2.4 GHz 802.11g/n) was not required due to the maximum allowed powers and the highest reported DSSS SAR. See Section 6.2.4 for more information.
2. Justification for test configurations for WLAN per KDB Publication 248227 D01v02r02 for 5 GHz WIFI single transmission chain operations, the initial test configuration was selected according to the transmission mode with the highest maximum allowed powers. Other transmission modes were not investigated since the highest reported SAR for initial test configuration adjusted by the ratio of maximum output powers is less than 1.2 W/kg for 1g evaluations. See Section 6.2.5 for more information.
3. When the maximum reported 1g averaged SAR is ≤ 0.8 W/kg, SAR testing on additional channels was not required. Otherwise, SAR for the next highest output power channel was required until the reported SAR result was ≤ 1.20 W/kg for 1g evaluations or all test channels were measured. When 10g SAR measurement is considered, a factor of 2.5 is applied to the thresholds above.
4. The device was configured to transmit continuously at the required data rate, channel bandwidth and signal modulation, using the highest transmission duty factor supported by the test mode tools. The reported SAR was scaled to the 100% transmission duty factor to determine compliance.

Bluetooth Notes

1. To determine compliance, Bluetooth SAR was measured with the maximum power condition. Bluetooth was evaluated with a test mode with 100% transmission duty factor.

802.15.4 ab-Nb Notes

1. 802.15.4 ab-NB SAR was scaled to the 8.9% transmission duty factor to determine compliance since the duty factor of the device is limited to 8.9% per manufacturer. See Section 7.4 for the time domain plot and calculation for the duty factor of the device.

FCC ID: BCG-A3331	RF EXPOSURE REPORT	Approved by: Technical Manager
DUT Type: Watch		Page 22 of 28

REV 24.0
03/26/2025

10 SAR MEASUREMENT VARIABILITY

10.1 Measurement Variability

Per FCC KDB Publication 865664 D01v01, SAR measurement variability was not assessed for each frequency band since all measured SAR values are < 0.8 W/kg for 1g SAR and < 2.0 W/kg for 10g SAR.

10.2 Measurement Uncertainty

The measured SAR was <1.5 W/kg for 1g and <3.75 W/kg for 10g for all frequency bands. Therefore, per KDB Publication 865664 D01v01r04, the extended measurement uncertainty analysis was not required.

FCC ID: BCG-A3331	RF EXPOSURE REPORT	Approved by: Technical Manager
DUT Type: Watch		Page 23 of 28

REV 24.0
03/26/2025

Unless otherwise specified, no part of this report may be reproduced or utilized in any part, form or by any means, electronic or mechanical, including photocopying and microfilm, without permission in writing from Element. If you have any questions or have an enquiry about obtaining additional rights to this report or assembly of contents thereof, please contact CT.INFO@ELEMENT.COM.

11 EQUIPMENT LIST

Manufacturer	Model	Description	Cal Date	Cal Interval	Cal Due	Serial Number
Agilent	E4404B	Spectrum Analyzer	N/A	N/A	N/A	MY45113242
Agilent	E4438C	ESG Vector Signal Generator	10/23/2024	Annual	10/23/2025	MY45093852
Agilent	E4438C	ESG Vector Signal Generator	11/15/2024	Annual	11/15/2025	MY45092078
Agilent	N5182A	MXG Vector Signal Generator	05/30/2025	Annual	05/30/2026	MY48180366
Agilent	N5182A	MXG Vector Signal Generator	12/05/2024	Annual	12/05/2025	US46240505
Agilent	8753ES	S-Parameter Vector Network Analyzer	01/06/2025	Annual	01/06/2026	MY40001472
Agilent	8753ES	S-Parameter Vector Network Analyzer	09/25/2024	Annual	09/25/2025	MY40003841
Agilent	E5515C	Wireless Communications Test Set	CBT	N/A	CBT	GB46310798
Agilent	E5515C	Wireless Communications Test Set	CBT	N/A	CBT	GB41450275
Agilent	N4010A	Wireless Connectivity Test Set	N/A	N/A	N/A	GB46170464
Amplifier Research	1551G6	Amplifier	CBT	N/A	CBT	433973
Amplifier Research	1551G6	Amplifier	CBT	N/A	CBT	433974
Amplifier Research	150A100C	Amplifier	CBT	N/A	CBT	350132
Anritsu	MN8110B	I/O Adaptor	CBT	N/A	CBT	6261747881
Anritsu	ML2496A	Power Meter	06/27/2025	Annual	06/27/2026	1840005
Anritsu	ML2495A	Power Meter	07/03/2025	Annual	07/03/2026	1039008
Anritsu	MA2411B	Pulse Power Sensor	09/05/2024	Annual	09/05/2025	1726262
Anritsu	MA2411B	Pulse Power Sensor	10/21/2024	Annual	10/21/2025	1027293
Anritsu	MA24106A	USB Power Sensor	05/29/2025	Annual	05/29/2026	1344554
Anritsu	MA24106A	USB Power Sensor	10/29/2024	Annual	10/29/2025	1248508
Insize	1108-150	Digital Caliper	2/25/2025	Annual	02/25/2026	711245294
Control Company	4052	Long Stem Thermometer	02/27/2024	Biennial	02/27/2026	240174346
Control Company	4052	Long Stem Thermometer	02/27/2024	Biennial	02/27/2026	240171096
Control Company	4052	Long Stem Thermometer	02/27/2024	Biennial	02/27/2026	240171059
Control Company	4040	Therm./ Clock/ Humidity Monitor	04/15/2024	Biennial	04/15/2026	240310280
Control Company	4040	Therm./ Clock/ Humidity Monitor	10/15/2024	Biennial	10/15/2026	240763503
Control Company	4040	Therm./ Clock/ Humidity Monitor	04/15/2024	Biennial	04/15/2026	240310282
Keysight Technologies	N9020A	MXA Signal Analyzer	07/07/2025	Annual	07/07/2026	MY48010233
Agilent	N9020A	MXA Signal Analyzer	07/07/2025	Biennial	07/07/2027	MY56470202
MCL	BW-N6W5+	6dB Attenuator	CBT	N/A	CBT	1139
Mini-Circuits	VLF-6000+	Low Pass Filter DC to 6000 MHz	CBT	N/A	CBT	N/A
Mini-Circuits	VLF-6000+	Low Pass Filter DC to 6000 MHz	07/03/2025	Annual	07/03/2026	31634
Mini-Circuits	BW-N20W5+	DC to 18 GHz Precision Fixed 20 dB Attenuator	CBT	N/A	CBT	N/A
Mini-Circuits	NLP-1200+	Low Pass Filter DC to 1000 MHz	CBT	N/A	CBT	N/A
Mini-Circuits	NLP-2950+	Low Pass Filter DC to 2700 MHz	CBT	N/A	CBT	N/A
Mini-Circuits	BW-N20W5	Power Attenuator	CBT	N/A	CBT	1226
Mini-Circuits	ZUDC10-83-S+	Directional Coupler	CBT	N/A	CBT	2050
Narda	4772-3	Attenuator (3dB)	CBT	N/A	CBT	9406
Narda	BW-S3W2	Attenuator (3dB)	CBT	N/A	CBT	120
Seekonk	NC-100	Torque Wrench	CBT	N/A	CBT	22217
Seekonk	NC-100	Torque Wrench	04/02/2024	Biennial	04/02/2026	1262
Rohde & Schwarz	CMW500	Wideband Radio Communication Tester	CBT	N/A	CBT	120504
Rohde & Schwarz	CMW500	Wideband Radio Communication Tester	CBT	N/A	CBT	109366
Rohde & Schwarz	CMW500	Wideband Radio Communication Tester	CBT	N/A	CBT	155128
Rohde & Schwarz	CMW500	Wideband Radio Communication Tester	CBT	N/A	CBT	102060
Rohde & Schwarz	CMW500	Wideband Radio Communication Tester	CBT	N/A	CBT	167112
SPEAG	DAK-3.5	Dielectric Assessment Kit	11/05/2024	Annual	11/05/2025	1277
SPEAG	DAKS-3.5	Portable Dielectric Assessment Kit	08/07/2024	Annual	08/07/2025	1041
SPEAG	MAIA	Modulation and Audio Interference Analyzer	N/A	N/A	N/A	1237
SPEAG	MAIA	Modulation and Audio Interference Analyzer	N/A	N/A	N/A	1331
SPEAG	MAIA	Modulation and Audio Interference Analyzer	N/A	N/A	N/A	1390
SPEAG	DAK-12	Dielectric Assessment Kit (4MHz - 3GHz)	03/10/2025	Annual	03/10/2026	1102
SPEAG	CLA-13	Confined Loop Antenna	11/11/2024	Annual	11/11/2025	1004
SPEAG	D2450V2	2450 MHz SAR Dipole	05/13/2025	Annual	05/13/2026	750
SPEAG	D5GHzV2	5 GHz SAR Dipole	11/08/2024	Annual	11/08/2025	1066
SPEAG	DAE4	Dasy Data Acquisition Electronics	01/08/2025	Annual	01/08/2026	1465
SPEAG	DAE4	Dasy Data Acquisition Electronics	10/10/2024	Annual	10/10/2025	1237
SPEAG	DAE4	Dasy Data Acquisition Electronics	09/03/2024	Annual	09/03/2025	1646
SPEAG	DAE4	Dasy Data Acquisition Electronics	04/15/2025	Annual	04/15/2026	1323
SPEAG	DAE4	Dasy Data Acquisition Electronics	04/09/2025	Annual	04/09/2026	501
SPEAG	EX3DV4	SAR Probe	04/16/2025	Annual	04/16/2026	7551
SPEAG	EX3DV4	SAR Probe	10/15/2024	Annual	10/15/2025	3746
SPEAG	EX3DV4	SAR Probe	04/16/2025	Annual	04/16/2026	7532
SPEAG	EX3DV4	SAR Probe	01/14/2025	Annual	01/14/2026	7499

Note: CBT (Calibrated Before Testing). Prior to testing, the measurement paths containing a cable, amplifier, attenuator, coupler, or filter were connected to a calibrated source (i.e., a signal generator) to determine the losses of the measurement path. The power meter offset was then adjusted to compensate for the measurement system losses. This level offset is stored within the power meter before measurements are made. This calibration verification procedure applies to the system verification and output power measurements. The calibrated reading is then taken directly from the power meter after compensation of the losses for all final power measurements. Each equipment item was used solely within its respective calibration period.

FCC ID: BCG-A3331	RF EXPOSURE REPORT	Approved by: Technical Manager
DUT Type: Watch		Page 24 of 28

REV 24.0
03/26/2025

Unless otherwise specified, no part of this report may be reproduced or utilized in any part, form or by any means, electronic or mechanical, including photocopying and microfilm, without permission in writing from Element. If you have any questions or have an enquiry about obtaining additional rights to this report or assembly of contents thereof, please contact CT.INFO@ELEMENT.COM.

12 MEASUREMENT UNCERTAINTIES

Applicable for SAR measurements < 6 GHz:

a	b	c	d	e= f(d,k)	f	g	h = c x f/e	i = c x g/e	k
Uncertainty Component	IEEE 1528 Sec.	Tol. (± %)	Prob. Dist.	Div.	c _i 1gm	c _i 10 gms	1gm u _i (± %)	10gms u _i (± %)	v _i
Measurement System									
Probe Calibration	E2.1	7	N	1	1	1	7.0	7.0	∞
Axial Isotropy	E2.2	0.25	N	1	0.7	0.7	0.2	0.2	∞
Hemishperical Isotropy	E2.2	1.3	N	1	0.7	0.7	0.9	0.9	∞
Boundary Effect	E2.3	2	R	1.732	1	1	1.2	1.2	∞
Linearity	E2.4	0.3	N	1	1	1	0.3	0.3	∞
System Detection Limits	E2.4	0.25	R	1.732	1	1	0.1	0.1	∞
Modulation Response	E2.5	4.8	R	1.732	1	1	2.8	2.8	∞
Readout Electronics	E2.6	0.3	N	1	1	1	0.3	0.3	∞
Response Time	E2.7	0.8	R	1.732	1	1	0.5	0.5	∞
Integration Time	E2.8	2.6	R	1.732	1	1	1.5	1.5	∞
RF Ambient Conditions - Noise	E6.1	3	R	1.732	1	1	1.7	1.7	∞
RF Ambient Conditions - Reflections	E6.1	3	R	1.732	1	1	1.7	1.7	∞
Probe Positioner Mechanical Tolerance	E6.2	0.8	R	1.732	1	1	0.5	0.5	∞
Probe Positioning w/ respect to Phantom	E6.3	6.7	R	1.732	1	1	3.9	3.9	∞
Extrapolation, Interpolation & Integration algorithms for Max. SAR Evaluation	E5	4	R	1.732	1	1	2.3	2.3	∞
Test Sample Related									
Test Sample Positioning	E4.2	3.12	N	1	1	1	3.1	3.1	35
Device Holder Uncertainty	E4.1	1.67	N	1	1	1	1.7	1.7	5
Output Power Variation - SAR drift measurement	E2.9	5	R	1.732	1	1	2.9	2.9	∞
SAR Scaling	E6.5	0	R	1.732	1	1	0.0	0.0	∞
Phantom & Tissue Parameters									
Phantom Uncertainty (Shape & Thickness tolerances)	E3.1	7.6	R	1.73	1.0	1.0	4.4	4.4	∞
Liquid Conductivity - measurement uncertainty	E3.3	4.3	N	1	0.78	0.71	3.3	3.0	76
Liquid Permittivity - measurement uncertainty	E3.3	4.2	N	1	0.23	0.26	1.0	1.1	75
Liquid Conductivity - Temperature Uncertainty	E3.4	3.4	R	1.732	0.78	0.71	1.5	1.4	∞
Liquid Permittivity - Temperature Uncertainty	E3.4	0.6	R	1.732	0.23	0.26	0.1	0.1	∞
Liquid Conductivity - deviation from target values	E3.2	5.0	R	1.73	0.64	0.43	1.8	1.2	∞
Liquid Permittivity - deviation from target values	E3.2	5.0	R	1.73	0.60	0.49	1.7	1.4	∞
Combined Standard Uncertainty (k=1)				RSS			12.2	12.0	191
Expanded Uncertainty (95% CONFIDENCE LEVEL)				k=2			24.4	24.0	

The above measurement uncertainties are according to IEEE Std. 1528-2013

FCC ID: BCG-A3331	RF EXPOSURE REPORT	Approved by: Technical Manager
DUT Type: Watch		Page 25 of 28

REV 24.0
03/26/2025

Unless otherwise specified, no part of this report may be reproduced or utilized in any part, form or by any means, electronic or mechanical, including photocopying and microfilm, without permission in writing from Element. If you have any questions or have an enquiry about obtaining additional rights to this report or assembly of contents thereof, please contact CT.INFO@ELEMENT.COM.

13 CONCLUSION

13.1 Measurement Conclusion

The SAR evaluation indicates that the EUT complies with the RF radiation exposure limits of the FCC and Innovation, Science, and Economic Development Canada, with respect to all parameters subject to this test. These measurements were taken to simulate the RF effects of RF exposure under worst-case conditions. Precise laboratory measures were taken to assure repeatability of the tests. The results and statements relate only to the item(s) tested.

Please note that the absorption and distribution of electromagnetic energy in the body are very complex phenomena that depend on the mass, shape, and size of the body, the orientation of the body with respect to the field vectors, and the electrical properties of both the body and the environment. Other variables that may play a substantial role in possible biological effects are those that characterize the environment (e.g., ambient temperature, air velocity, relative humidity, and body insulation) and those that characterize the individual (e.g., age, gender, activity level, debilitation, or disease). Because various factors may interact with one another to vary the specific biological outcome of an exposure to electromagnetic fields, any protection guide should consider maximal amplification of biological effects as a result of field-body interactions, environmental conditions, and physiological variables. [3]

FCC ID: BCG-A3331	RF EXPOSURE REPORT	Approved by: Technical Manager
DUT Type: Watch		Page 26 of 28

REV 24.0
03/26/2025

Unless otherwise specified, no part of this report may be reproduced or utilized in any part, form or by any means, electronic or mechanical, including photocopying and microfilm, without permission in writing from Element. If you have any questions or have an enquiry about obtaining additional rights to this report or assembly of contents thereof, please contact CT.INFO@ELEMENT.COM.

14 REFERENCES

- [1] Federal Communications Commission, ET Docket 93-62, Guidelines for Evaluating the Environmental Effects of Radiofrequency Radiation, Aug. 1996.
- [2] ANSI/IEEE C95.1-2005, American National Standard safety levels with respect to human exposure to radio frequency electromagnetic fields, 3kHz to 300GHz, New York: IEEE, 2006.
- [3] ANSI/IEEE C95.1-1992, American National Standard safety levels with respect to human exposure to radio frequency electromagnetic fields, 3kHz to 300GHz, New York: IEEE, Sept. 1992.
- [4] ANSI/IEEE C95.3-2002, IEEE Recommended Practice for the Measurement of Potentially Hazardous Electromagnetic Fields - RF and Microwave, New York: IEEE, December 2002.
- [5] IEEE Standards Coordinating Committee 39 –Standards Coordinating Committee 34 – IEEE Std. 1528-2013, IEEE Recommended Practice for Determining the Peak Spatial-Average Specific Absorption Rate (SAR) in the Human Head from Wireless Communications Devices: Measurement Techniques.
- [6] NCRP, National Council on Radiation Protection and Measurements, Biological Effects and Exposure Criteria for RadioFrequency Electromagnetic Fields, NCRP Report No. 86, 1986. Reprinted Feb. 1995.
- [7] T. Schmid, O. Egger, N. Kuster, Automated E-field scanning system for dosimetric assessments, IEEE Transaction on Microwave Theory and Techniques, vol. 44, Jan. 1996, pp. 105-113.
- [8] K. Pokovic, T. Schmid, N. Kuster, Robust setup for precise calibration of E-field probes in tissue simulating liquids at mobile communications frequencies, ICECOM97, Oct. 1997, pp. 1 -124.
- [9] K. Pokovic, T. Schmid, and N. Kuster, E-field Probe with improved isotropy in brain simulating liquids, Proceedings of the ELMAR, Zadar, Croatia, June 23-25, 1996, pp. 172-175.
- [10] Schmid & Partner Engineering AG, Application Note: Data Storage and Evaluation, June 1998, p2.
- [11] V. Hombach, K. Meier, M. Burkhardt, E. Kuhn, N. Kuster, The Dependence of EM Energy Absorption upon Human Modeling at 900 MHz, IEEE Transaction on Microwave Theory and Techniques, vol. 44 no. 10, Oct. 1996, pp. 1865-1873.
- [12] N. Kuster and Q. Balzano, Energy absorption mechanism by biological bodies in the near field of dipole antennas above 300MHz, IEEE Transaction on Vehicular Technology, vol. 41, no. 1, Feb. 1992, pp. 17-23.
- [13] G. Hartsgrrove, A. Kraszewski, A. Surowiec, Simulated Biological Materials for Electromagnetic Radiation Absorption Studies, University of Ottawa, Bioelectromagnetics, Canada: 1987, pp. 29-36.
- [14] Q. Balzano, O. Garay, T. Manning Jr., Electromagnetic Energy Exposure of Simulated Users of Portable Cellular Telephones, IEEE Transactions on Vehicular Technology, vol. 44, no.3, Aug. 1995.
- [15] W. Gander, Computermathematick, Birkhaeuser, Basel, 1992.
- [16] W.H. Press, S.A. Teukolsky, W.T. Vetterling, and B.P. Flannery, Numerical Recipes in C, The Art of Scientific Computing, Second edition, Cambridge University Press, 1992.
- [17] N. Kuster, R. Kastle, T. Schmid, Dosimetric evaluation of mobile communications equipment with known precision, IEEE Transaction on Communications, vol. E80-B, no. 5, May 1997, pp. 645-652.

FCC ID: BCG-A3331	RF EXPOSURE REPORT	Approved by: Technical Manager
DUT Type: Watch		Page 27 of 28

REV 24.0
03/26/2025

Unless otherwise specified, no part of this report may be reproduced or utilized in any part, form or by any means, electronic or mechanical, including photocopying and microfilm, without permission in writing from Element. If you have any questions or have an enquiry about obtaining additional rights to this report or assembly of contents thereof, please contact CT.INFO@ELEMENT.COM.

- [18] CENELEC CLC/SC111B, European Prestandard (prENV 50166-2), Human Exposure to Electromagnetic Fields High-frequency: 10kHz-300GHz, Jan. 1995.
- [19] Prof. Dr. Niels Kuster, ETH, Eidgenössische Technische Hochschule Zürich, Dosimetric Evaluation of the Cellular Phone.
- [20] IEC 62209-1, Measurement procedure for the assessment of specific absorption rate of human exposure to radio frequency fields from hand-held and body-mounted wireless communication devices - Part 1: Devices used next to the ear (Frequency range of 300 MHz to 6 GHz), July 2016.
- [21] Innovation, Science, Economic Development Canada RSS-102 Radio Frequency Exposure Compliance of Radiocommunication Apparatus (All Frequency Bands) Issue 5, March 2015.
- [22] Health Canada Safety Code 6 Limits of Human Exposure to Radio Frequency Electromagnetic Fields in the Frequency Range from 3 kHz – 300 GHz, 2015
- [23] FCC SAR Test Procedures for 2G-3G Devices, Mobile Hotspot and UMPC Devices KDB Publications 941225, D01-D07
- [24] SAR Measurement Guidance for IEEE 802.11 Transmitters, KDB Publication 248227 D01
- [25] FCC SAR Considerations for Handsets with Multiple Transmitters and Antennas, KDB Publications 648474 D03-D04
- [26] FCC SAR Evaluation Considerations for Laptop, Notebook, Netbook and Tablet Computers, FCC KDB Publication 616217 D04
- [27] FCC SAR Measurement and Reporting Requirements for 100MHz – 6 GHz, KDB Publications 865664 D01-D02
- [28] FCC General RF Exposure Guidance and SAR Procedures for Dongles, KDB Publication 447498, D01-D02
- [29] Anexo à Resolução No. 533, de 10 de Setembro de 2009.
- [30] IEC 62209-2, Human exposure to radio frequency fields from hand-held and body-mounted wireless communication devices - Human models, instrumentation, and procedures - Part 2: Procedure to determine the specific absorption rate (SAR) for wireless communication devices used in close proximity to the human body (frequency range of 30 MHz to 6 GHz), Mar. 2010.

FCC ID: BCG-A3331	RF EXPOSURE REPORT	Approved by: Technical Manager
DUT Type: Watch		Page 28 of 28

REV 24.0
03/26/2025